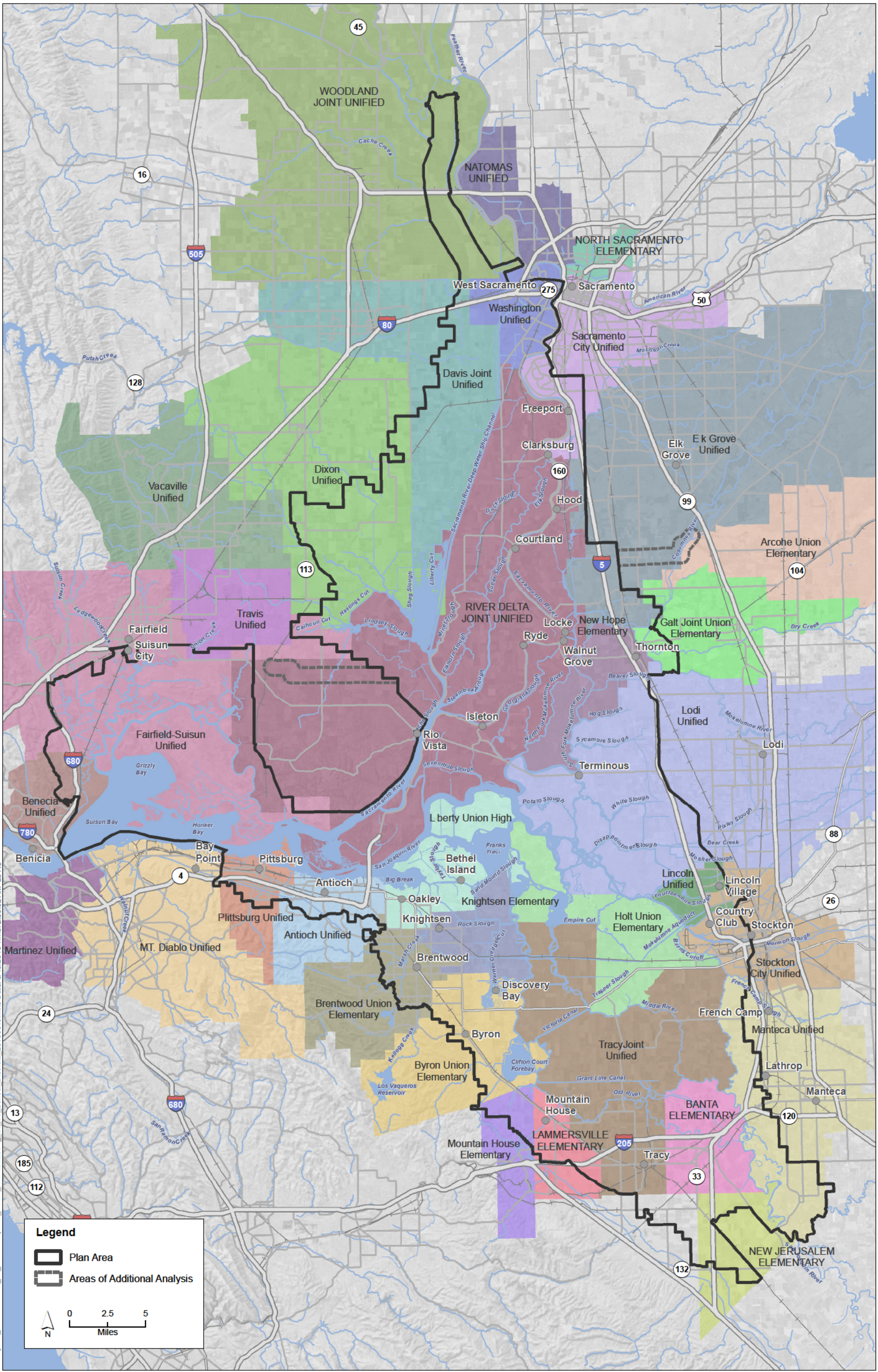


K:\Projects_1\DW\00726_11_BDC\pmapdoc\Public Draft\Ch20\Fig_20_02_Fire Protection 20130927.mxd Date: 9/27/2013 Time: 8:55:53 AM 25110

Sources: Plan Area, ICF 2012; Area of Additional Analysis, ICF 2012; Fire Districts and Stations HDR 2011.

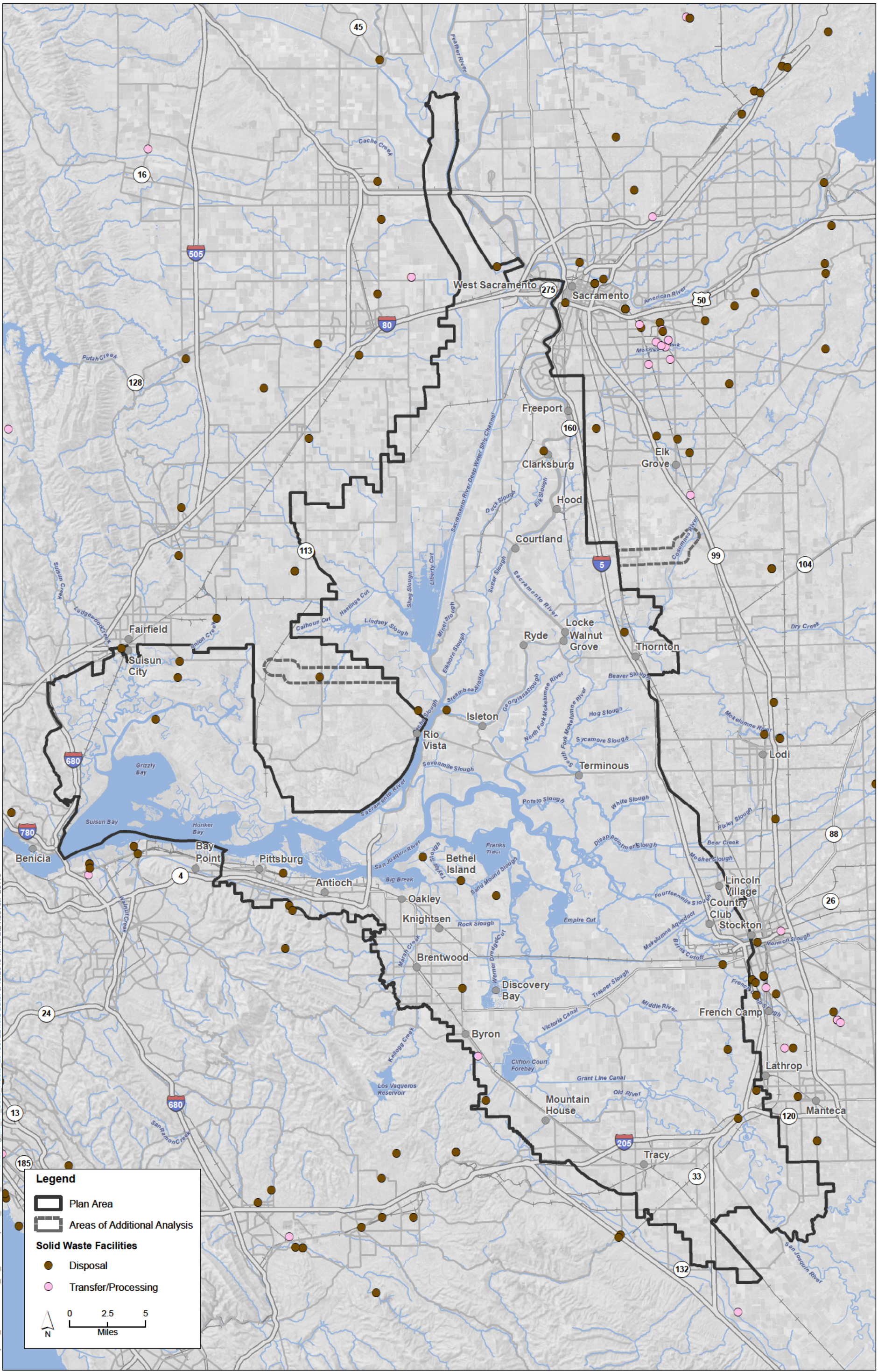
Figure 20-2
Fire Protection Entities and Facilities



K:\Projects_1\DW\00726_11_BDCP\mapdoc\Public_Draft\Ch20\Fig. 20-03_School_Districts_20130816.mxd Date: 9/18/2013 Time: 2:30:02 AM 25110

Sources: Plan Area, ICF 2012; Area of Additional Analysis, ICF 2012; School Districts, U.S. Census Bureau 2008.

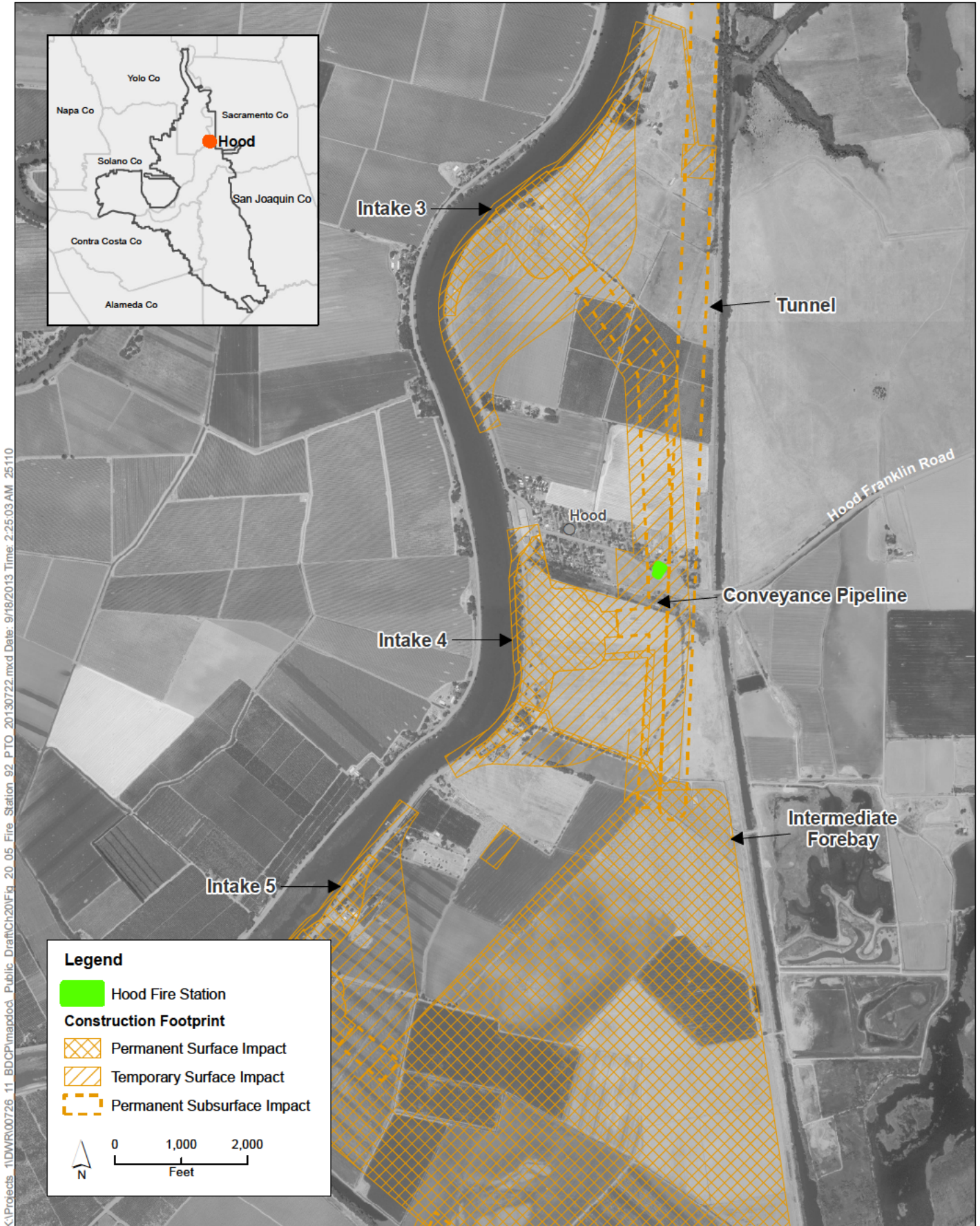
Figure 20-3
School Districts



K:\Projects_1\DW\00726_11_BDCP\mapdoc\Public Draft\Ch20\Fig 20_04_Solid Waste_20130722.mxd Date: 9/18/2013 Time: 2:24:38 AM 25110

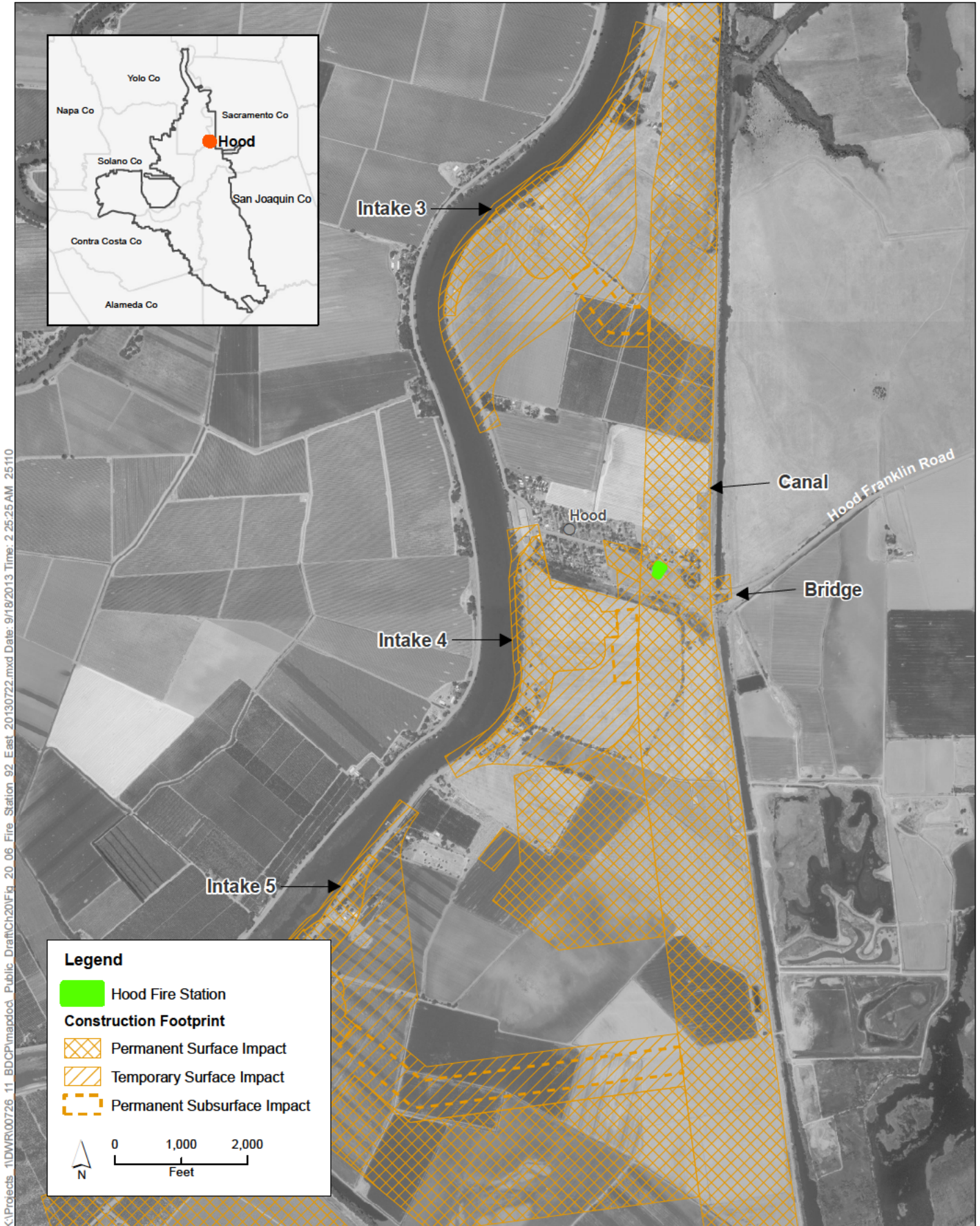
Sources: Plan Area, ICF 2012; Solid Waste, HDR 2011

Figure 20-4
Solid Waste Facilities



Sources: Plan Area, ICF 2012; Constructability (Rev10b), DHCCP DWR 2012

Figure 20-5
Conflict with the Hood Fire Station Associated with the Pipeline/Tunnel Alignment (Alternatives 1A, 2A, 6A, 7, and 8)



Sources: Plan Area, ICF 2012; Constructability (Rev10b), DHCCP DWR 2012

Figure 20-6
Conflict with the Hood Fire Station Associated
with the East Alignment (Alternatives 1B, 2B, and 6B)