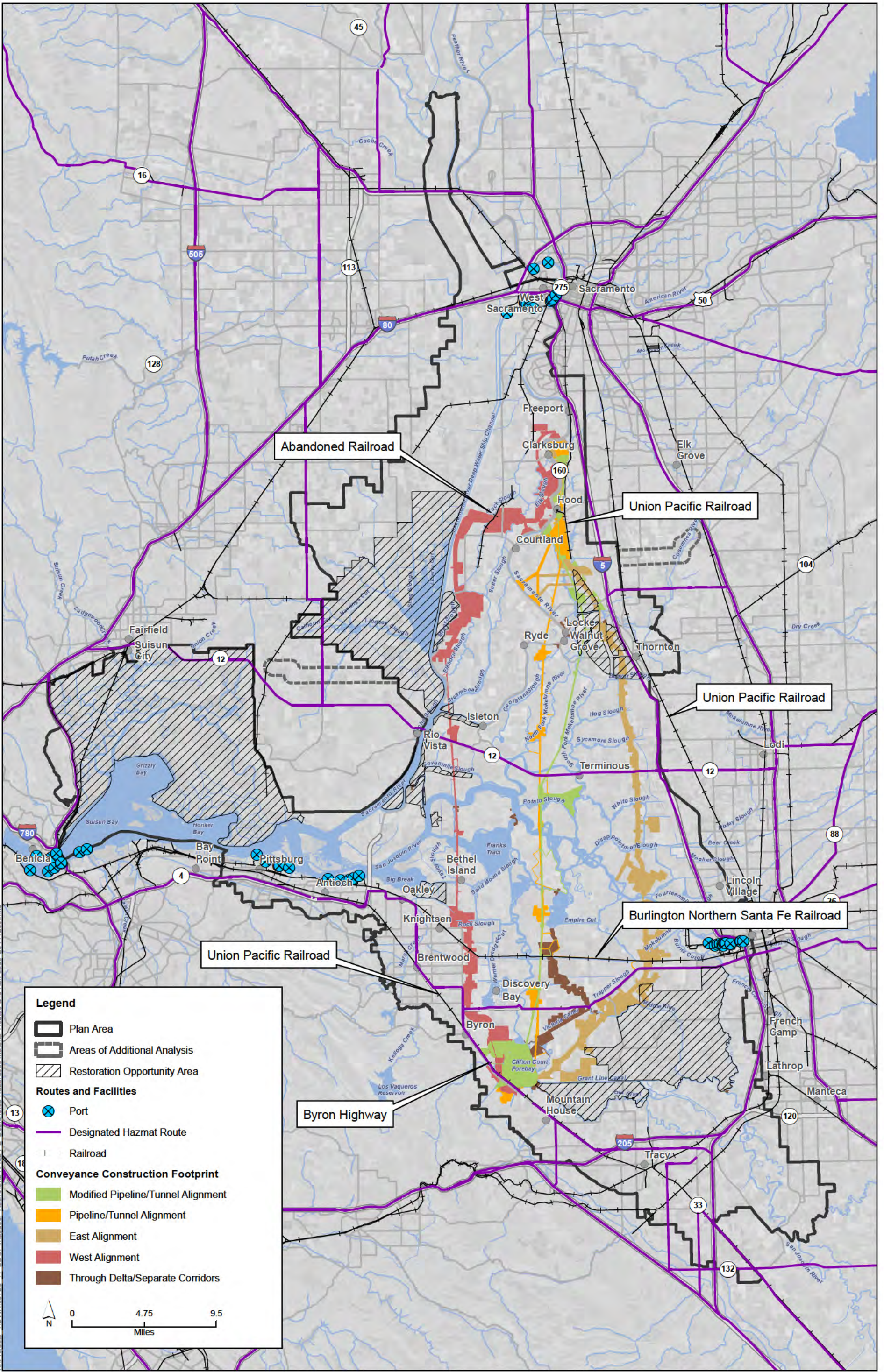


Sources: Plan Area, ICF 2012; Area of Additional Analysis, ICF 2012; ROA, SAIC 2010; CA Gas Compressor Stations, HDR 2010; CA Gas Storage Facilities, HDR 2010; Oil Refinery Terminals, CEC 2005; Constructability (Rev 10), DHCCP DWR 2012; Constructability (Rev 4b), DHCCP DWR 2014.

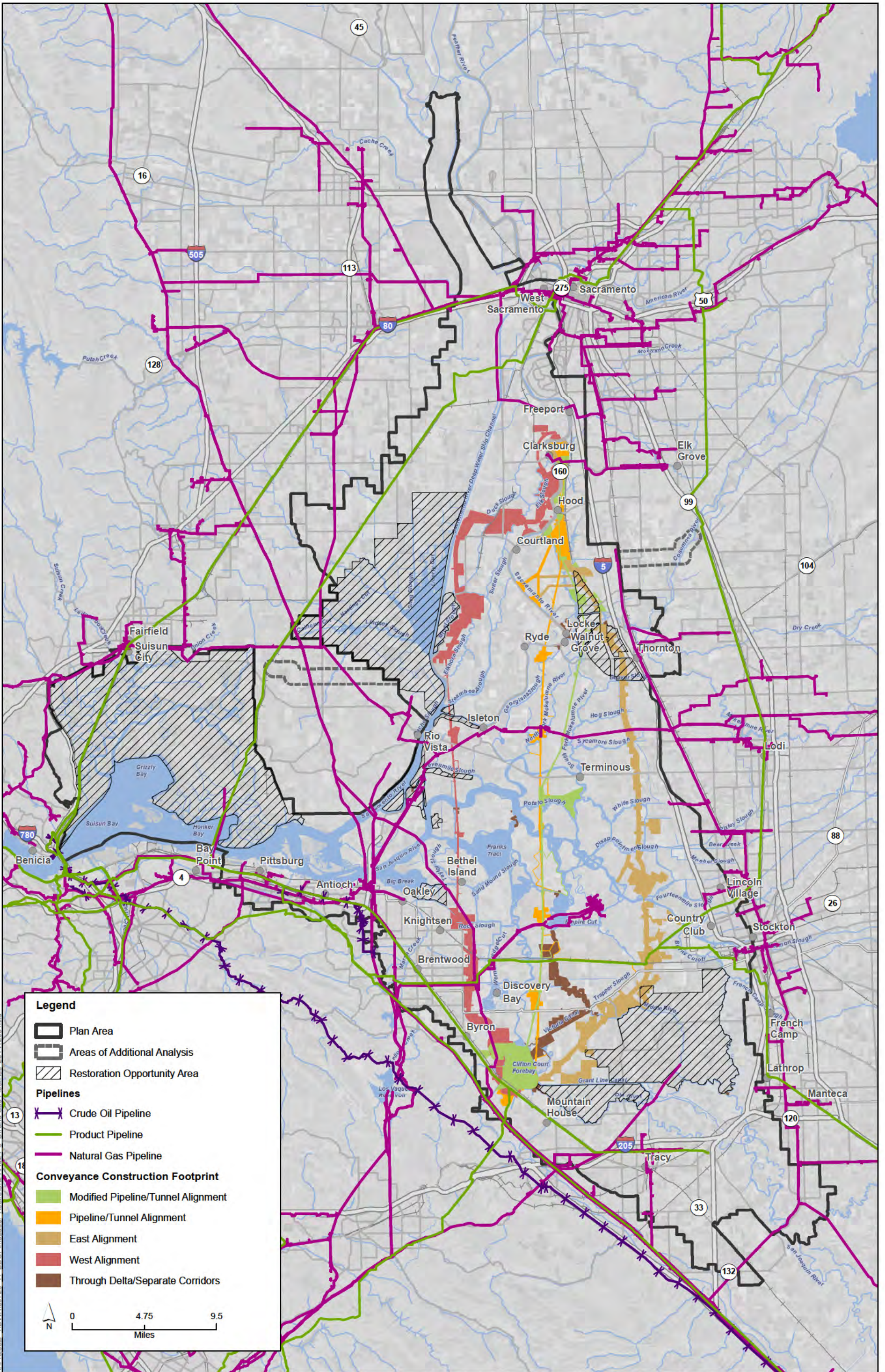
Figure 24-1
Oil and Gas Processing Facilities



K:\Projects\1\DW\00726_11_BDCP\mxd\02_24\24\Fig24_2_Designated Hazardous Material Routes and Railroads_20141209.mxd

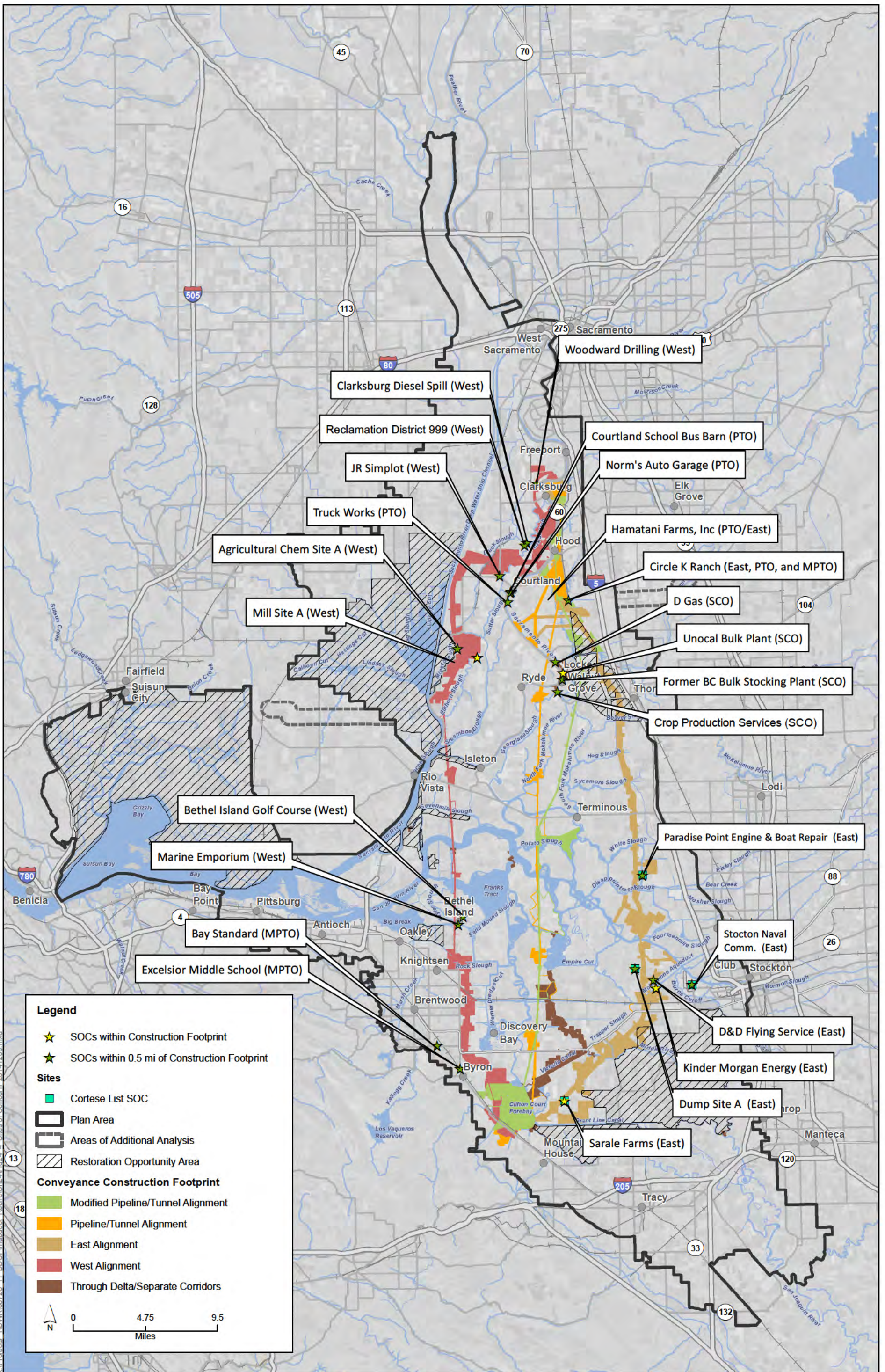
Sources: Plan Area, ICF 2012; Area of Additional Analysis, ICF 2012; ROA, SAIC 2010; Ports, HDR 2011; Railroads, CASIL 2010; RITA Hazmat Routes, RITA/BTS NTAD 2006; Constructability (Rev 10), DHCCP DWR 2012; Constructability (Rev 4b), DHCCP DWR 2014

Figure 24-2
Designated Hazardous Material Routes and Railroads



Sources: Plan Area, ICF 2012; Area of Additional Analysis, ICF 2012; Pipelines, DWR 2010; ROA, SAIC 2010; Constructability (Rev 10), DHCCP DWR 2012; Constructability (Rev 3b), DHCCP DWR 2012; Constructability (Rev 4b), DHCCP DWR 2014.

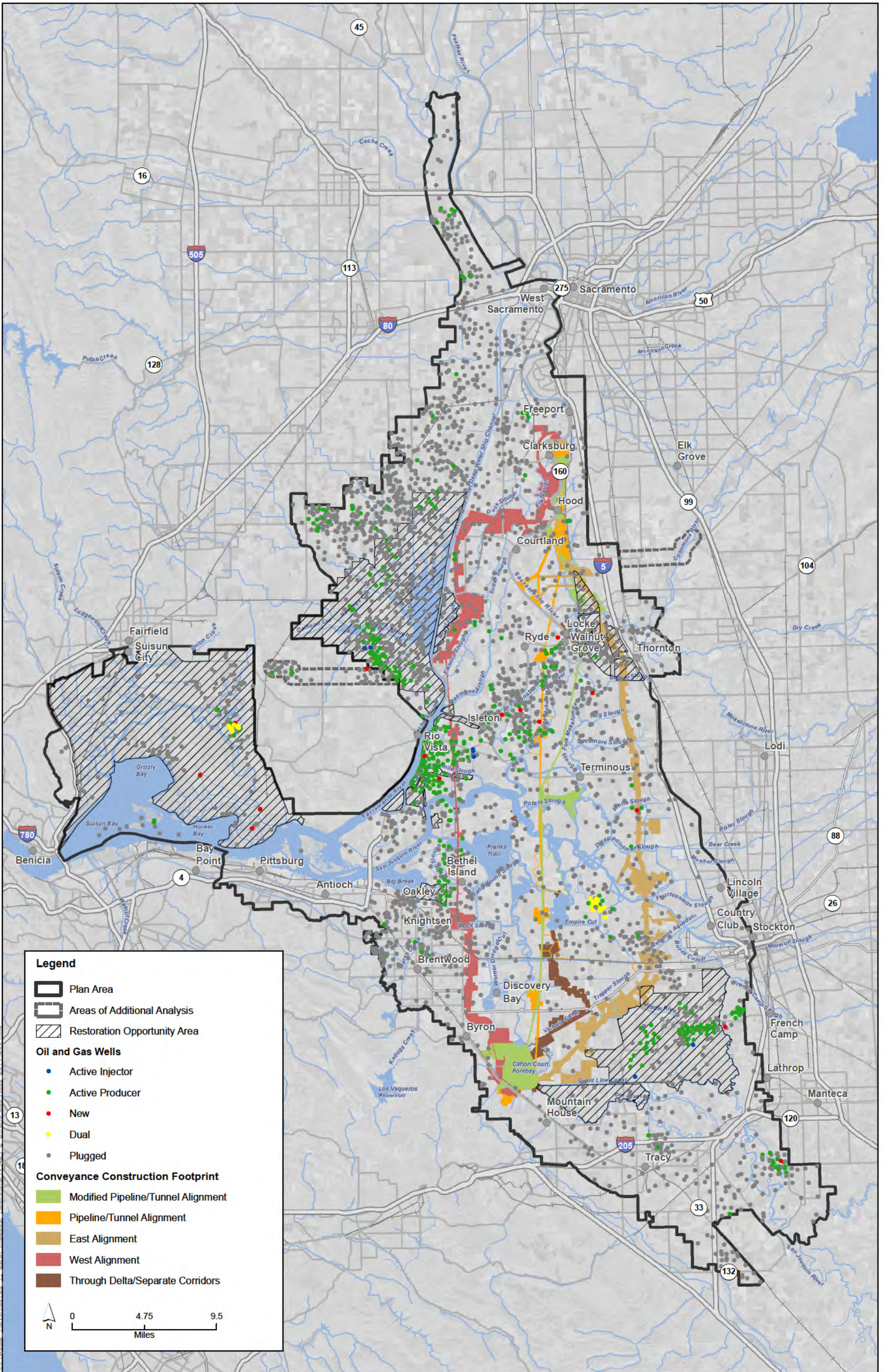
Figure 24-3
Oil and Gas Pipelines



K:\Projects\1\DW\00726_11_BDCP\mapdoc\Recl\Ch24\Fig24_4_Sites of Concern_20141209.mxd

Sources: Plan Area, ICF 2012; Constructability (Rev 10), DHCCP DWR 2012; Constructability (Rev 3b), DHCCP DWR 2012; HDR_Hazmat_Sites_CORTESE, HDR 2011, Constructability (Rev 4b), DHCCP DWR 2014

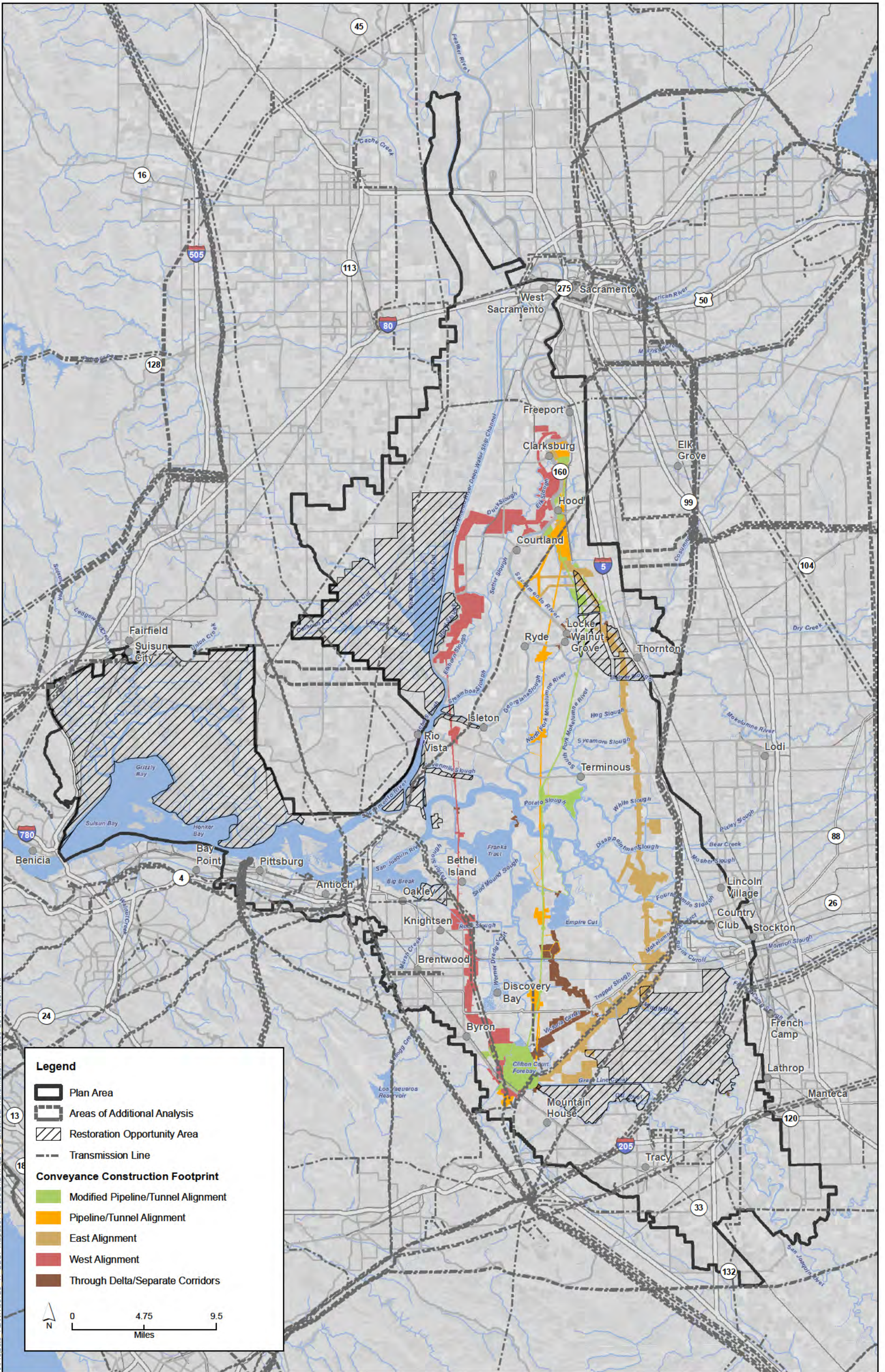
Figure 24-4
Sites of Concern



K:\Projects\1\DW\00726_11_BDCP\mapdoc\Revised\Ch24\Fig24_5_Oil and Gas Wells_20141209.mxd

Sources: Plan Area, ICF 2012; Area of Additional Analysis, ICF 2012; ROA, SAIC 2010; Oil/Gas Wells, DOC 2009; Constructability (Rev 10), DHCCP DWR 2012; Constructability (Rev 3b), DHCCP DWR 2012; Constructability (Rev 4b), DHCCP DWR 2014

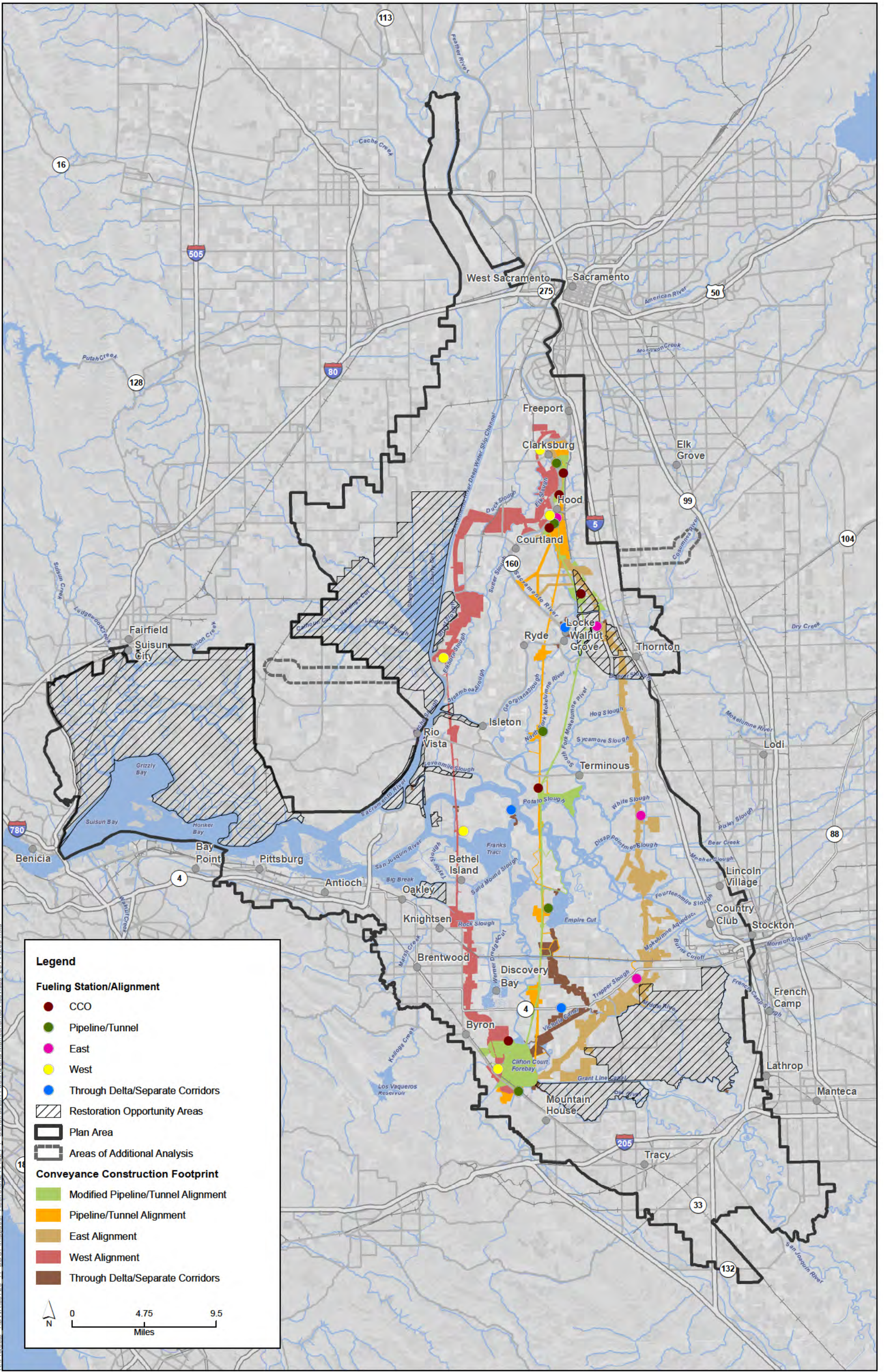
Figure 24-5
Oil and Gas Wells



K:\Projects\1\DW\00726_11_BDC\pmapdoc\ReclrcCh24\Fig24_6_Electrical Transmission Facilities_20141209.mxd

Sources: Plan Area, ICF 2012; Area of Additional Analysis, ICF 2012; Transmission Lines, ICF 2011; ROA, SAIC 2010; Constructability (Rev 10), DHCCP DWR 2012; Constructability (Rev 3b), DHCCP DWR 2012; Constructability (Rev 4b), DHCCP DWR 2014.

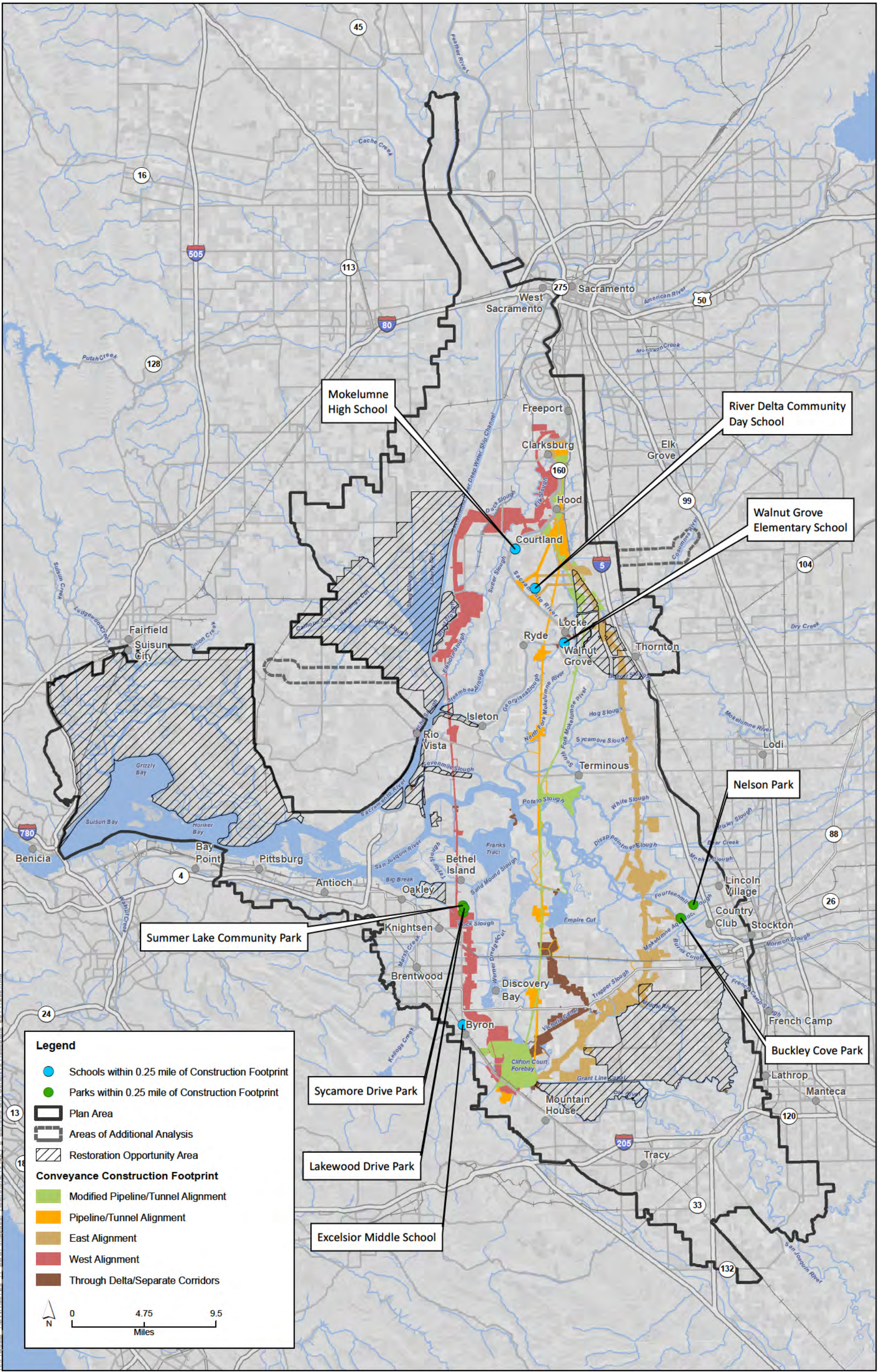
Figure 24-6
Electrical Transmission Lines



K:\Projects\1\DW\00726_11_BDC\P\m\doc\Recirc\Ch24\Fig24.7_Construction Fueling and Maintenance Activities_20141209.mxd

Sources: Plan Area, ICF 2012; Area of Additional Analysis, ICF 2012; ROA, SAIC 2010; Constructability (Rev 10), DHCCP DWR 2012; Constructability (Rev 3b), DHCCP DWR 2012; Constructability (Rev 4b), DHCCP DWR 2014

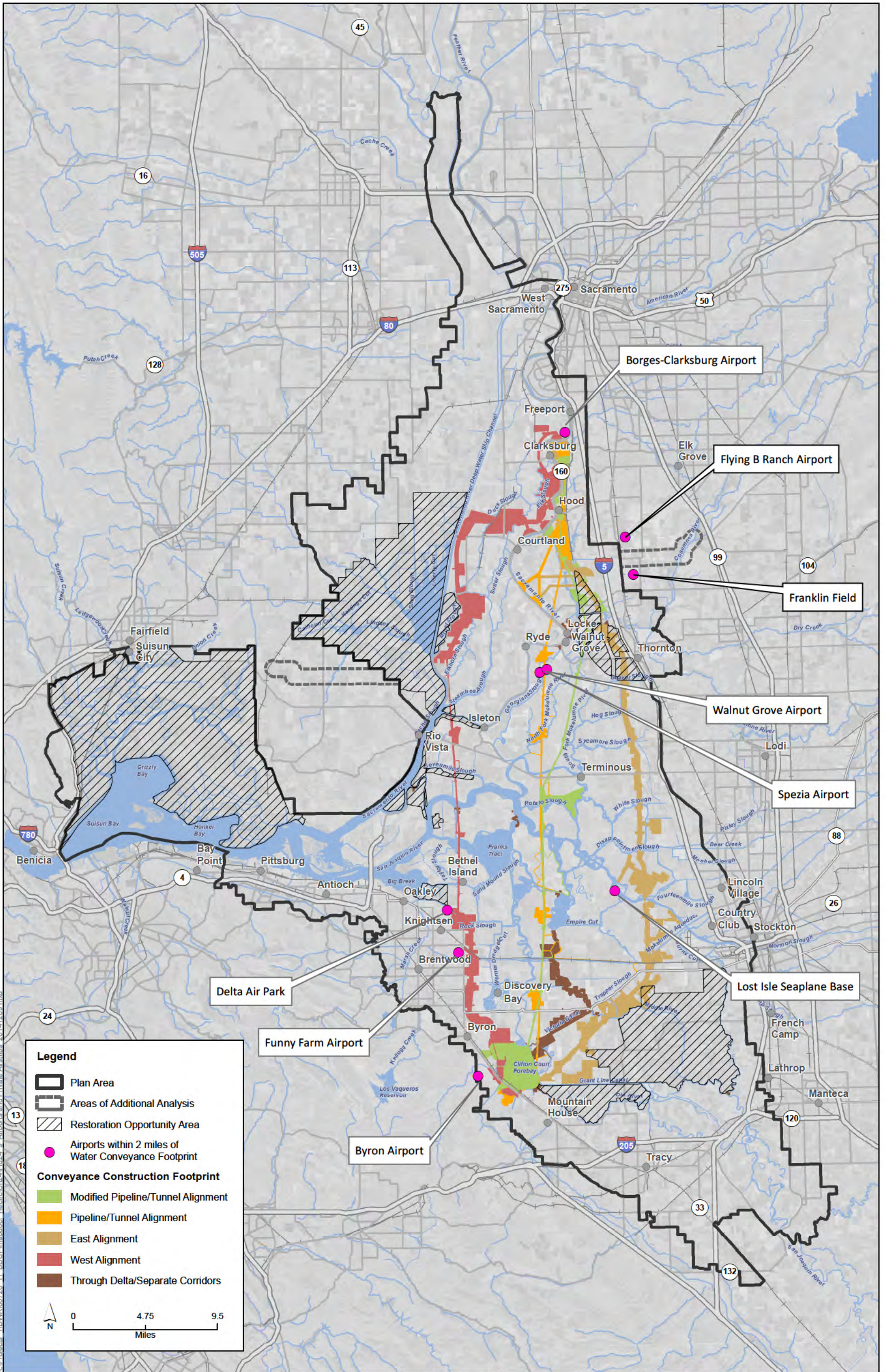
Figure 24-7
Construction Fueling Stations



K:\Projects\1\DW\00726_11_BDCP\mxd\Recirc\Ch24\Fig24_8_Schools and Sensitive Receptors_20141209.mxd

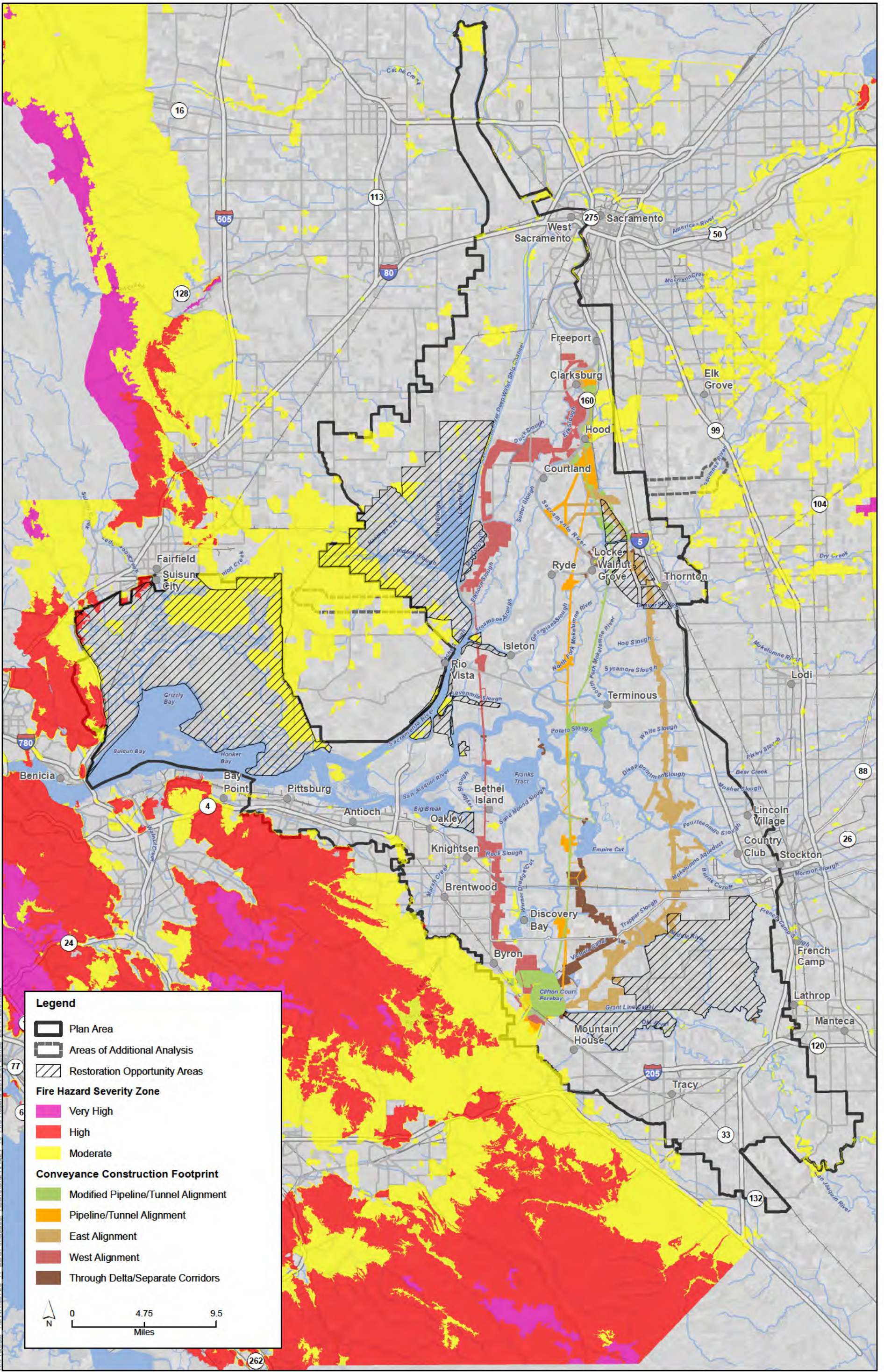
Sources: Plan Area, ICF 2012; Area of Additional Analysis, ICF 2012; ROA, SAIC 2010; Schools, DWR 2010; Hospitals, DWR 2010; Parks, AECOM 2010; Parks, GreenInfo Network 2011; Parks, USFWS 2011, DWR 2010; Constructability (Rev 10), DHCCP DWR 2012; Constructability (Rev 3b), DHCCP DWR 2012. Constructability (Rev 4b), DHCCP DWR 2014

Figure 24-8
Sensitive Receptors



Sources: Plan Area, ICF 2012; Area of Additional Analysis, ICF 2012; Airports, ESRI 2010; ROA, SAIC 2010; Constructability (Rev 10), DHCCP DWR 2012; Constructability (Rev 3b), DHCCP DWR 2012; Constructability (Rev 4b), DHCCP DWR 2014

Figure 24-9
Airports and Private Airstrips



K:\Projects\1\DW\00726_11_BDC\Plan\doc\Recirc\Ch24\Fig24_10_Fire Hazard Severity Zones_20141209.mxd

Sources: Plan Area, ICF 2012; Area of Additional Analysis, ICF 2012; Yolo, Solano, Alameda, San Joaquin, Sacramento, and Contra Costa Counties, CA Fire and Resource Assessment Program 2011; Constructability (Rev 9c), DHCCP DWR 2012; Constructability (Rev 3a), DHCCP DWR 2012.

Figure 24-10
Fire Hazard Severity Zones