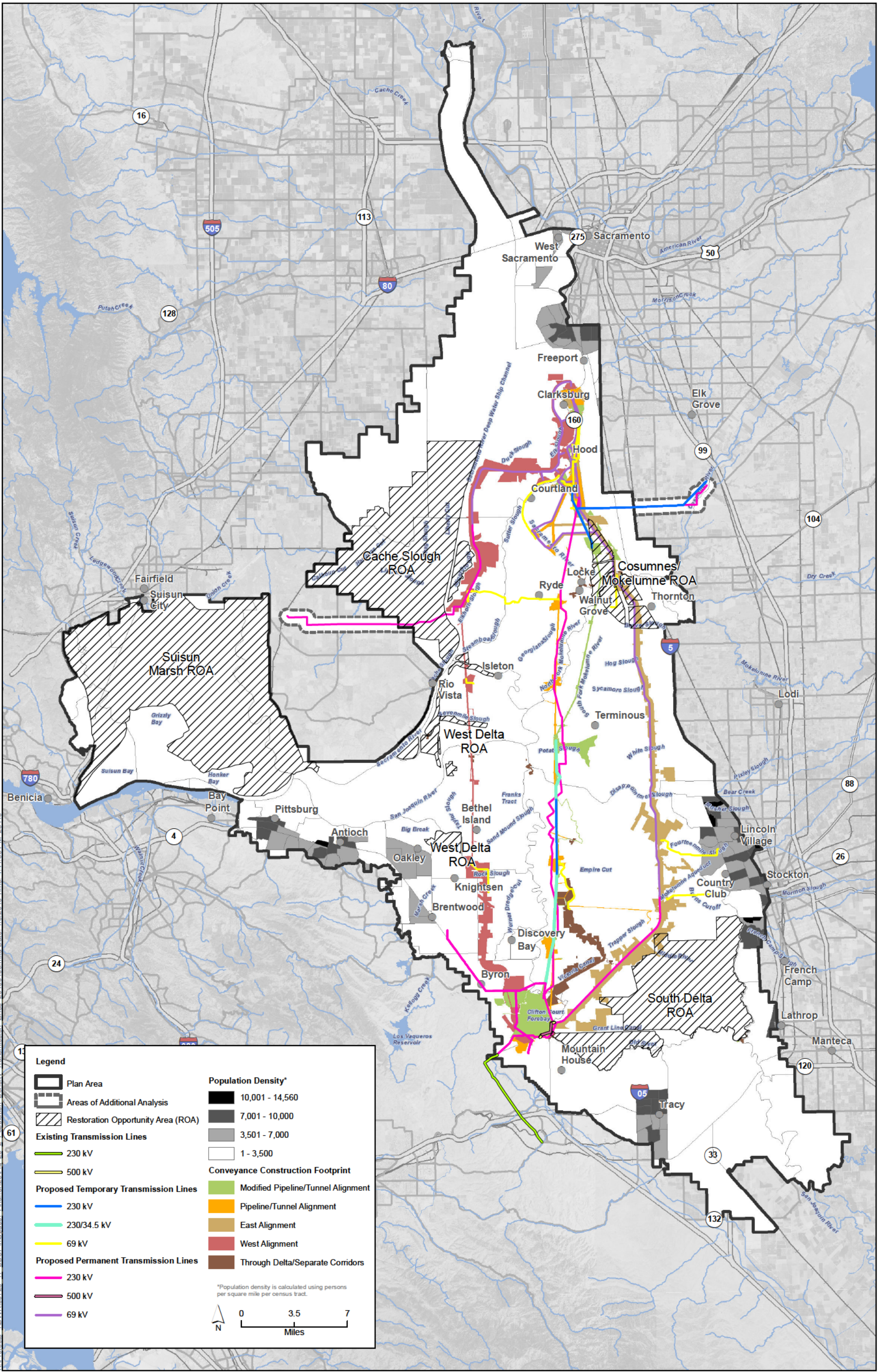


BOCP...EIR-EIS 12-1-14 (TM)

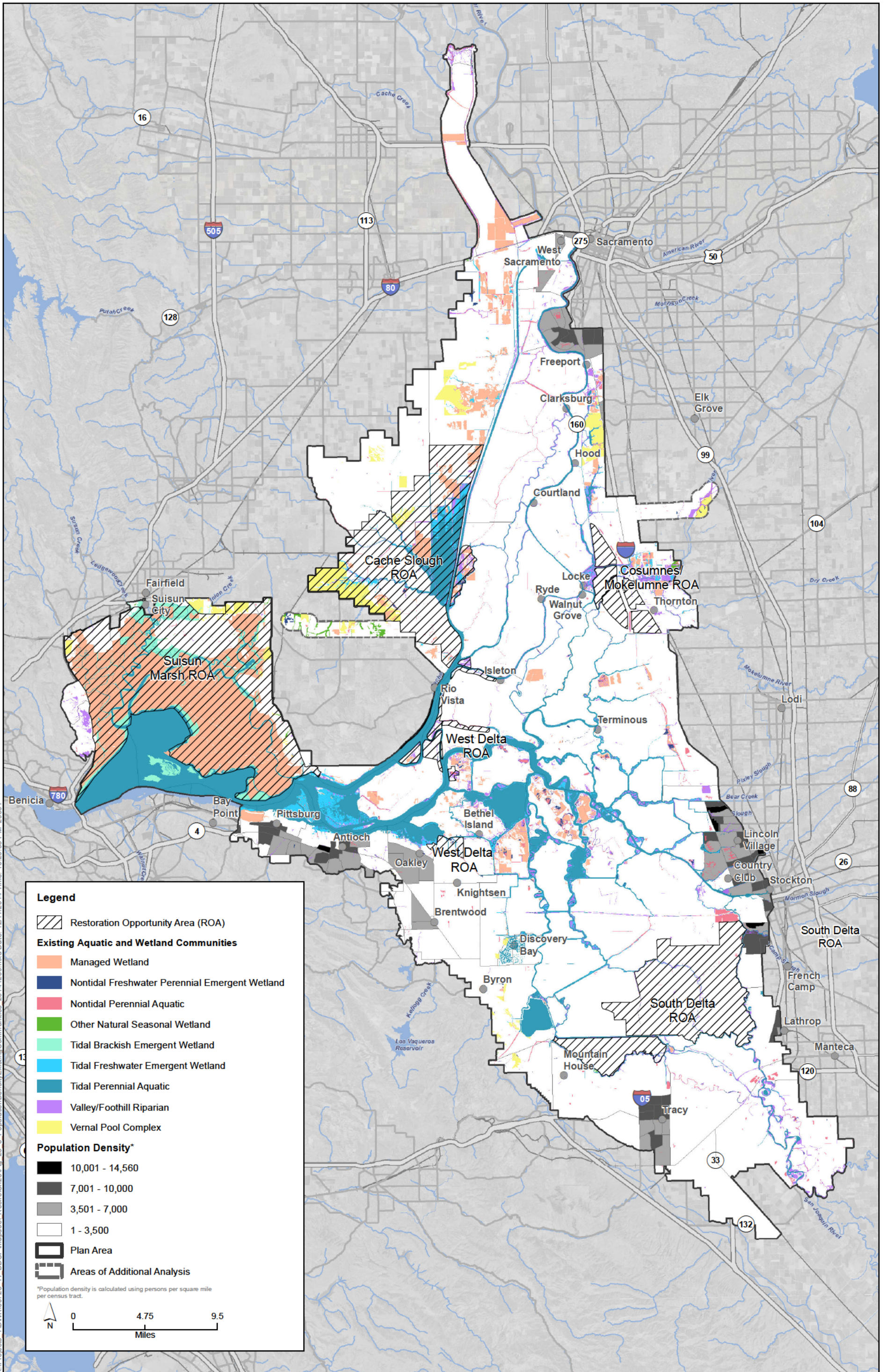
**Figure 25-1
Sediment Removal Process at Intakes**



K:\Projects\10\W\100728_11_BDCP\main\doc\Final\Ch25\Fig_25_2_Population_Density_Transmission_Lines_20160106.mxd Date: 1/6/2016 Time: 4:41:55 PM 25110

Sources: Plan Area, ICF 2012; Area of Additional Analysis, ICF 2012; Census Data, U.S. Census Bureau 2010; Plan Area, ICF 2012; Area of Additional Analysis, ICF 2012; Constructability & Utility Linear Features (Rev 10b), DHCCP DWR 2012; DHCCP DWR 2013; Constructability & Utility Linear Features (Rev 3b), DHCCP DWR 2013; Constructability & Utility Linear Features (Rev 5b), DHCCP DWR 2015

Figure 25-2
Population Density and Transmission Lines



Sources: Plan Area, ICF 2012; Area of Additional Analysis, ICF 2012; Census Data, U.S. Census Bureau 2010; Natural Communities, ICF 2013

Figure 25-3
Population Density and Aquatic and Wetland Communities