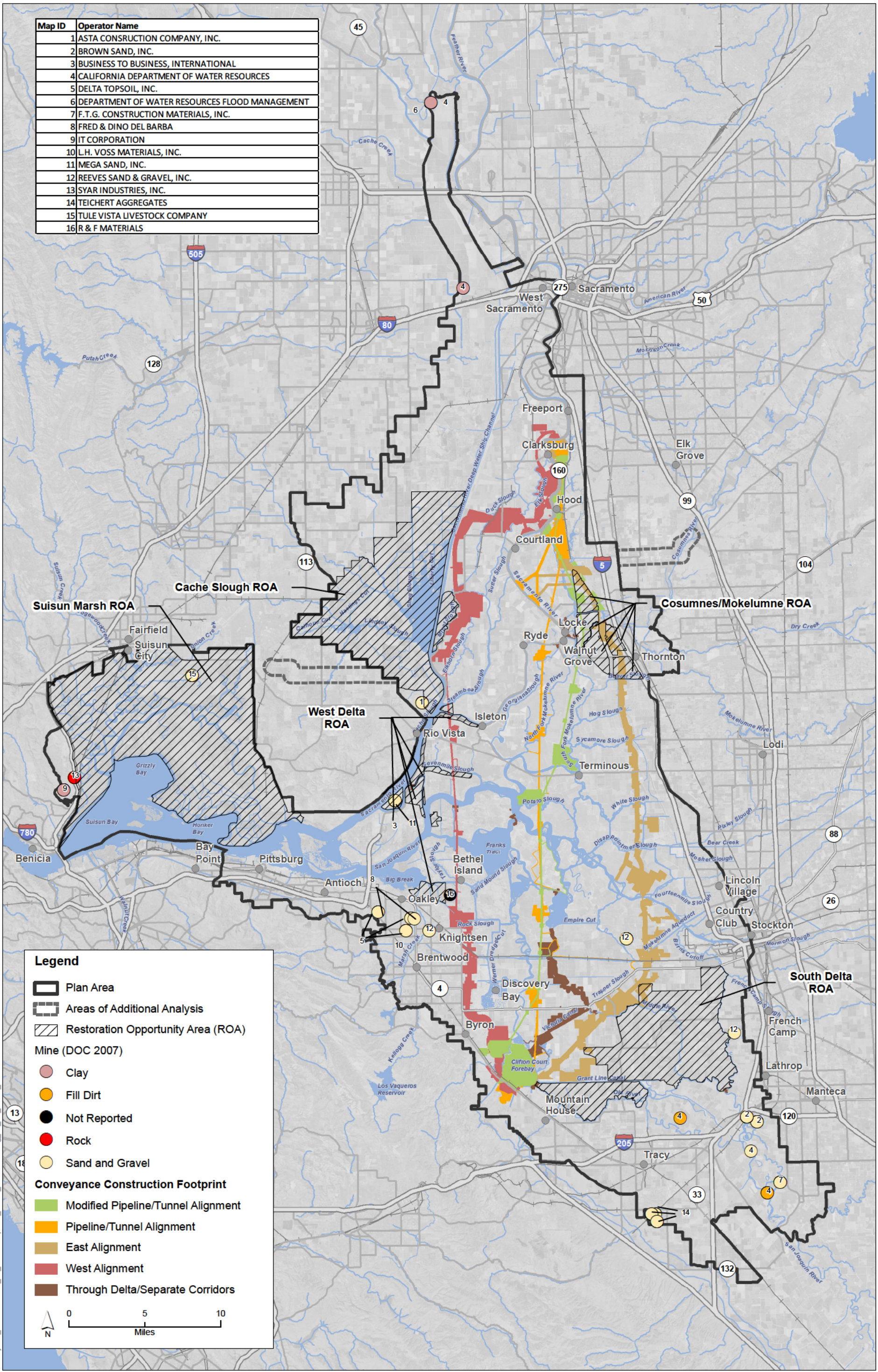


Map ID	Operator Name
1	ASTA CONSTRUCTION COMPANY, INC.
2	BROWN SAND, INC.
3	BUSINESS TO BUSINESS, INTERNATIONAL
4	CALIFORNIA DEPARTMENT OF WATER RESOURCES
5	DELTA TOPSOIL, INC.
6	DEPARTMENT OF WATER RESOURCES FLOOD MANAGEMENT
7	F.T.G. CONSTRUCTION MATERIALS, INC.
8	FRED & DINO DEL BARBA
9	IT CORPORATION
10	L.H. VOSS MATERIALS, INC.
11	MEGA SAND, INC.
12	REEVES SAND & GRAVEL, INC.
13	SYAR INDUSTRIES, INC.
14	TEICHERT AGGREGATES
15	TULE VISTA LIVESTOCK COMPANY
16	R & F MATERIALS



**Legend**

- Plan Area
- Areas of Additional Analysis
- Restoration Opportunity Area (ROA)

**Mine (DOC 2007)**

- Clay
- Fill Dirt
- Not Reported
- Rock
- Sand and Gravel

**Conveyance Construction Footprint**

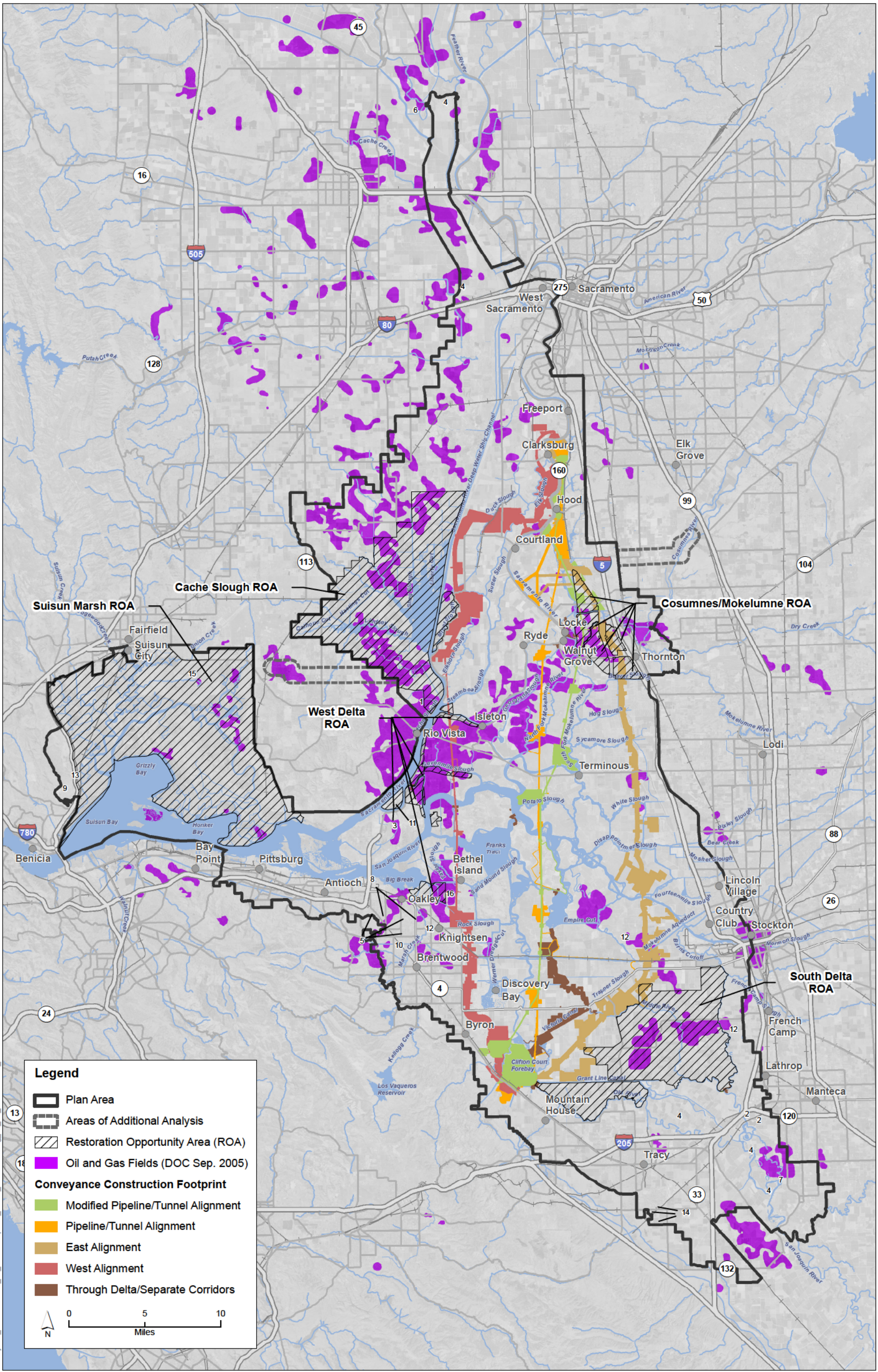
- Modified Pipeline/Tunnel Alignment
- Pipeline/Tunnel Alignment
- East Alignment
- West Alignment
- Through Delta/Separate Corridors

0 5 10  
Miles

K:\Projects\_1\DW\00726\_11\_BDCP\mapdoc\Public\_Draft\Ch26\Fig\_26\_01\_Mines\_20130930.mxd Date: 9/30/2013 Time: 12:04:44 PM 25110

Sources: Plan Area, ICF 2012; Area of Additional Analysis, ICF 2012; Mines, DOC/AECOM, 2007; ROA, SAIC 2010; Constructability (Rev 10), DHCCP DWR 2012; Constructability (Rev 2b), DHCCP DWR 2013 Constructability (Rev 3b), DHCCP DWR 2012;

**Figure 26-1**  
**Active Mines in the Plan Area**



K:\Projects\_1\DW\00726\_11\_BDCP\mapdoc\_Public\_Draft\Ch26\Fig\_26\_02\_OilGasFields\_20130722.mxd Date: 9/18/2013 Time: 8:33:15 AM 25110

Sources: Plan Area, ICF 2012; Area of Additional Analysis, ICF 2012; Oil/Gas, DOC/AECOM, Sep. 2005; ROA, SAIC 2010; Constructability (Rev 10), DHCCP DWR 2012; Constructability (Rev 2b), DHCCP DWR 2013; Constructability (Rev 3b), DHCCP DWR 2012;

**Figure 26-2**  
**Oil and Gas Fields in the Plan Area Vicinity**