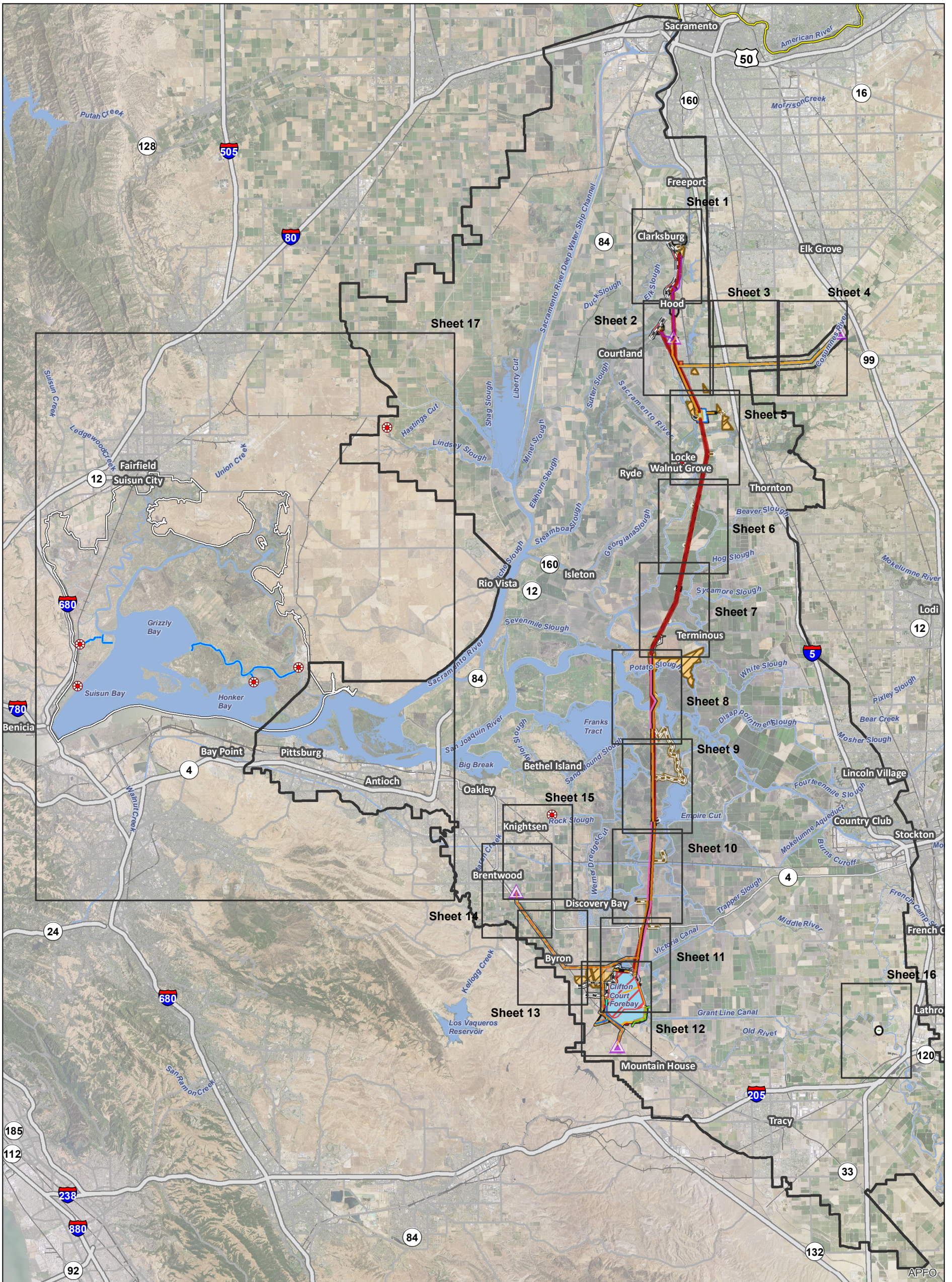


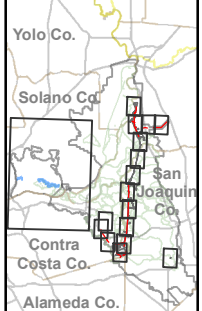
**Appendix 3.A, Map Book for the Proposed Action**





T:\WGI\38\GIS\_33\_00\GIS\SRRequest\_11\FID\Deliverable\_10\FEN\129\_15\_BA\_Mpbk\_Ch3\_Index.mxd 20150929

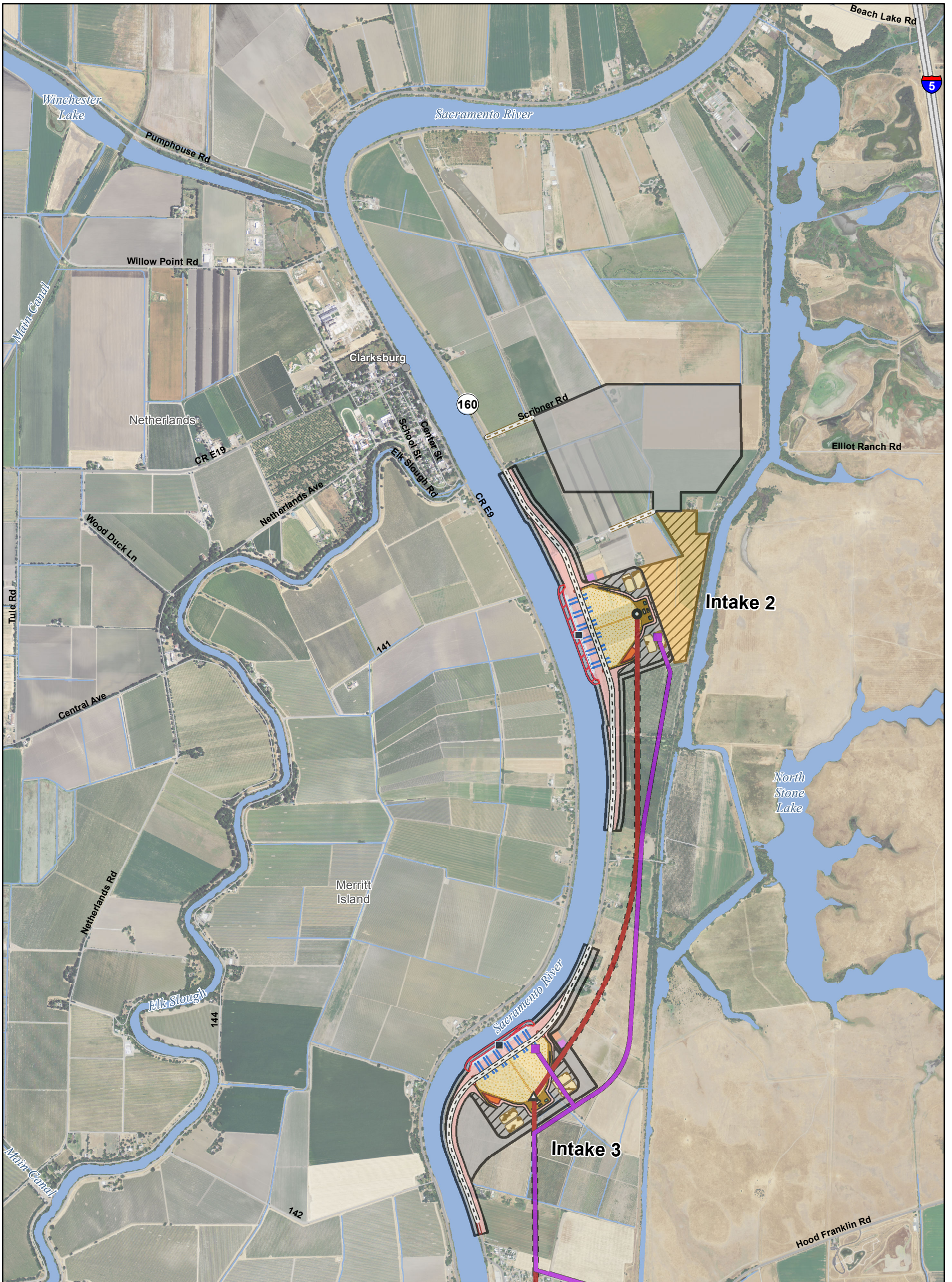
- Legend**
- Suisun Marsh Boundary
  - Water
  - Action Area**
  - \* Diversion Facilities
  - Other Facility
  - Upstream River
  - Legal Delta and Transmission Line Corridor



Sources: Diversion Facilities Delta Vision 2012, ICF 2015; DWR DHCCP Engineering (rev 5b); NAIP 2014

**Modified Pipeline Tunnel/Clifton Court Forebay Option  
Endangered Species Act Section 7 - Biological Assessment  
Index**





T:\WG\38\GIS\_33\_00\GISRequest\_11\FID\Deliverable\_10\FID\ENV\129\_15\_BA\_Mpbk\_Ch3.mxd 20150929 4:19:42 PM

<ul style="list-style-type: none"> <li> Suisun Marsh Boundary</li> <li><b>Action Area</b></li> <li> Other Facilities</li> <li> Other Facility</li> <li> Upstream River</li> <li> Legal Delta and Corridor</li> <li> Transmission Line</li> <li><b>Utility Features</b></li> <li> Point of Interconnection</li> <li> Substation</li> <li> Local Tap</li> </ul>	<ul style="list-style-type: none"> <li> Point of Interconnection</li> <li> Substation</li> <li> Local Tap</li> <li> 500 kV (Existing)</li> <li> 500 kV (Proposed)</li> <li> 230 kV (Existing)</li> <li> 230 kV (Proposed)</li> <li> 230/34.5 kV (Proposed)</li> <li> 69 kV (Proposed)</li> </ul>	<ul style="list-style-type: none"> <li><b>Engineering Features</b></li> <li> Intake</li> <li> Junction Structure</li> <li> Main Construction Shaft</li> <li> Ventilation/Access Shaft</li> <li> Canal</li> <li> HOR Gate</li> <li> Permanent Access Road</li> <li> Siphon</li> </ul>	<ul style="list-style-type: none"> <li> Temporary Access Road</li> <li> Tunnel</li> <li> Tunnel Conveyor</li> <li> Canal</li> <li> Cofferdam</li> <li> Control Structure</li> <li> Dredging</li> <li> Electrical Substation</li> <li> Emergency Generator</li> <li> Facility Access</li> <li> Facility Grounds</li> <li> Fill Pad</li> </ul>	<ul style="list-style-type: none"> <li> Forebay</li> <li> Forebay Embankment</li> <li> Forebay Inlet Structure</li> <li> Forebay Outlet Structure</li> <li> Forebay Overflow</li> <li> Forebay Overflow Structure</li> <li> Fuel Tank</li> <li> Gravity-Bypass Channel Spillway</li> <li> Intake</li> <li> MCC/Electrical Building</li> <li> Office Trailer</li> </ul>	<ul style="list-style-type: none"> <li> Outlet Tower</li> <li> Overflow Containment</li> <li> Berm</li> <li> Piping</li> <li> Public Road</li> <li> Pumping Plant</li> <li> Sediment Basin</li> <li> Solids Lagoon</li> <li> Staging</li> <li> Storage</li> <li> Storage/Detention Tank</li> <li> Water Treatment Facility</li> </ul>	<ul style="list-style-type: none"> <li> Permanent Subsurface Impact</li> <li> Permanent Surface Impact</li> <li> Temporary Surface Impact</li> <li> Reusable Tunnel Material Area</li> <li> Barge Unloading Facility</li> <li> Fuel Station</li> <li> Concrete Batch Plant</li> </ul>
---	--	--	--	--	---	---

Sources: Diversion Facilities Delta Vision 2012; ICF Action Area 2015; DWR DCE Engineering CCO (rev 5b); NAIP 2014





T:\WG\38\GIS\_33\_00\GISRequest\_11\FID\Deliverable\_10\FEN\129\_15\_BA\_Mpbk\_Ch3.mxd 20150929 4:24:37 PM

<ul style="list-style-type: none"> <li> Suisun Marsh Boundary</li> <li><b>Action Area</b></li> <li> Other Facilities</li> <li> Other Facility</li> <li> Upstream River</li> <li> Legal Delta and Corridor</li> <li> Transmission Line</li> <li><b>Utility Features</b></li> <li> Point of Interconnection</li> <li> Substation</li> <li> Local Tap</li> </ul>	<ul style="list-style-type: none"> <li> Substation</li> <li> Local Tap</li> <li> 500 kV (Existing)</li> <li> 500 kV (Proposed)</li> <li> 230 kV (Existing)</li> <li> 230 kV (Proposed)</li> <li> 230/34.5 kV (Proposed)</li> <li> 69 kV (Proposed)</li> </ul>	<ul style="list-style-type: none"> <li><b>Engineering Features</b></li> <li> Intake</li> <li> Junction Structure</li> <li> Main Construction Shaft</li> <li> Ventilation/Access Shaft</li> <li> Canal</li> <li> HOR Gate</li> <li> Permanent Access Road</li> <li> Siphon</li> </ul>	<ul style="list-style-type: none"> <li> Temporary Access Road</li> <li> Tunnel</li> <li> Tunnel Conveyor</li> <li> Canal</li> <li> Cofferdam</li> <li> Control Structure</li> <li> Dredging</li> <li> Electrical Substation</li> <li> Emergency Generator</li> <li> Facility Access</li> <li> Facility Grounds</li> <li> Fill Pad</li> </ul>	<ul style="list-style-type: none"> <li> Forebay</li> <li> Forebay Embankment</li> <li> Forebay Inlet Structure</li> <li> Forebay Outlet Structure</li> <li> Forebay Overflow</li> <li> Forebay Overflow Structure</li> <li> Fuel Tank</li> <li> Gravity-Bypass Channel Spillway</li> <li> Intake</li> <li> MCC/Electrical Building</li> <li> Office Trailer</li> </ul>	<ul style="list-style-type: none"> <li> Outlet Tower</li> <li> Overflow Containment</li> <li> Berm</li> <li> Piping</li> <li> Public Road</li> <li> Pumping Plant</li> <li> Sediment Basin</li> <li> Solids Lagoon</li> <li> Staging</li> <li> Storage</li> <li> Storage/Retention Tank</li> <li> Water Treatment Facility</li> </ul>	<ul style="list-style-type: none"> <li> Permanent Subsurface Impact</li> <li> Permanent Surface Impact</li> <li> Temporary Surface Impact</li> <li> Reusable Tunnel Material Area</li> <li> Barge Unloading Facility</li> <li> Fuel Station</li> <li> Concrete Batch Plant</li> </ul>
---	---	--	--	--	---	---

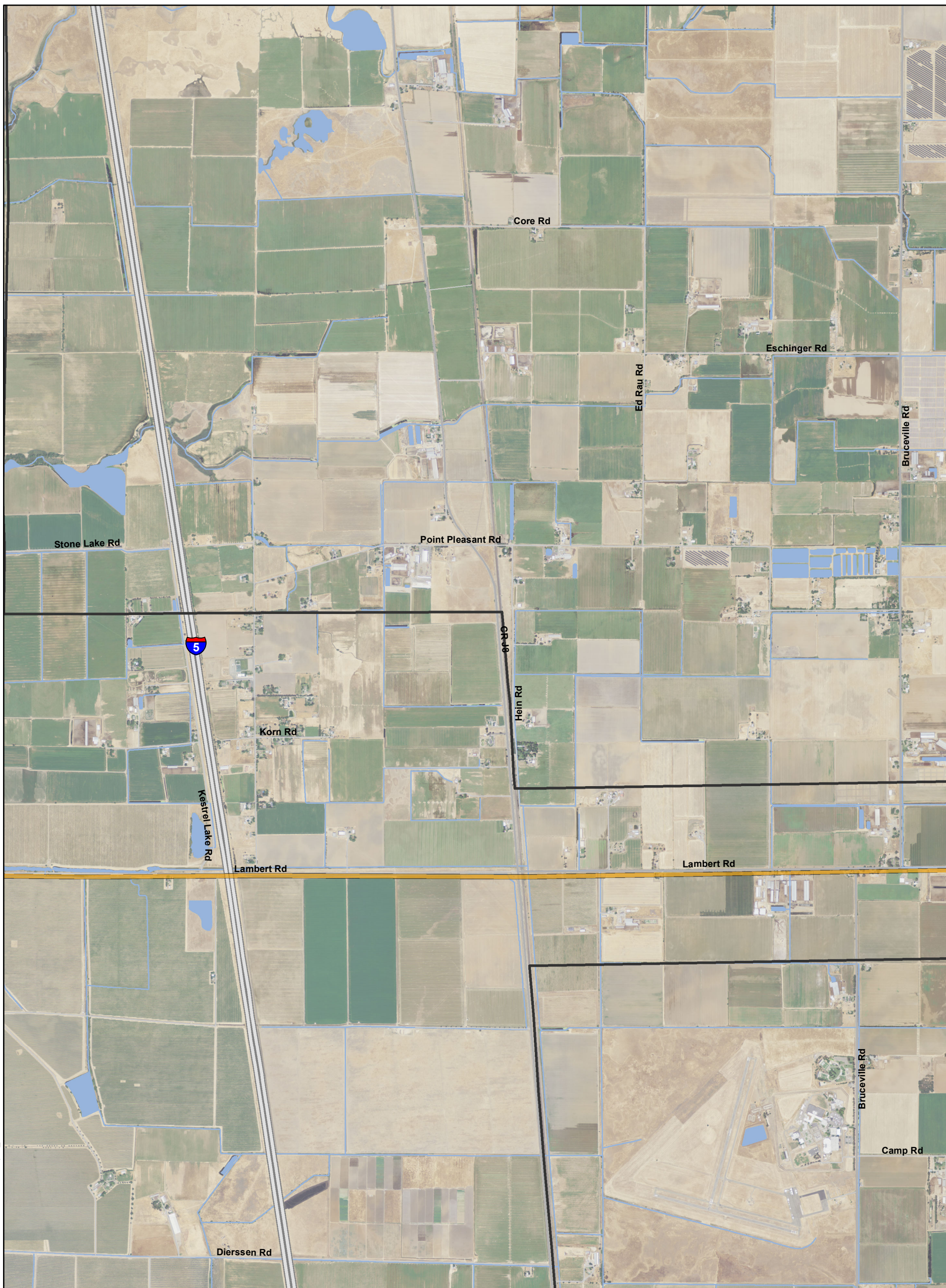
0 1,000 2,000  
Feet

N

Sources: Diversion Facilities Delta Vision 2012; ICF Action Area 2015; DWR DCE Engineering CCO (rev 5b); NAIP 2014



T:\WG\38\GIS\_33\_00\GISRequest\_11\F\Deliverable\_10\EN\129\_15\_BA\_Mpbk\_Ch3.mxd 20150929 4:29:11 PM



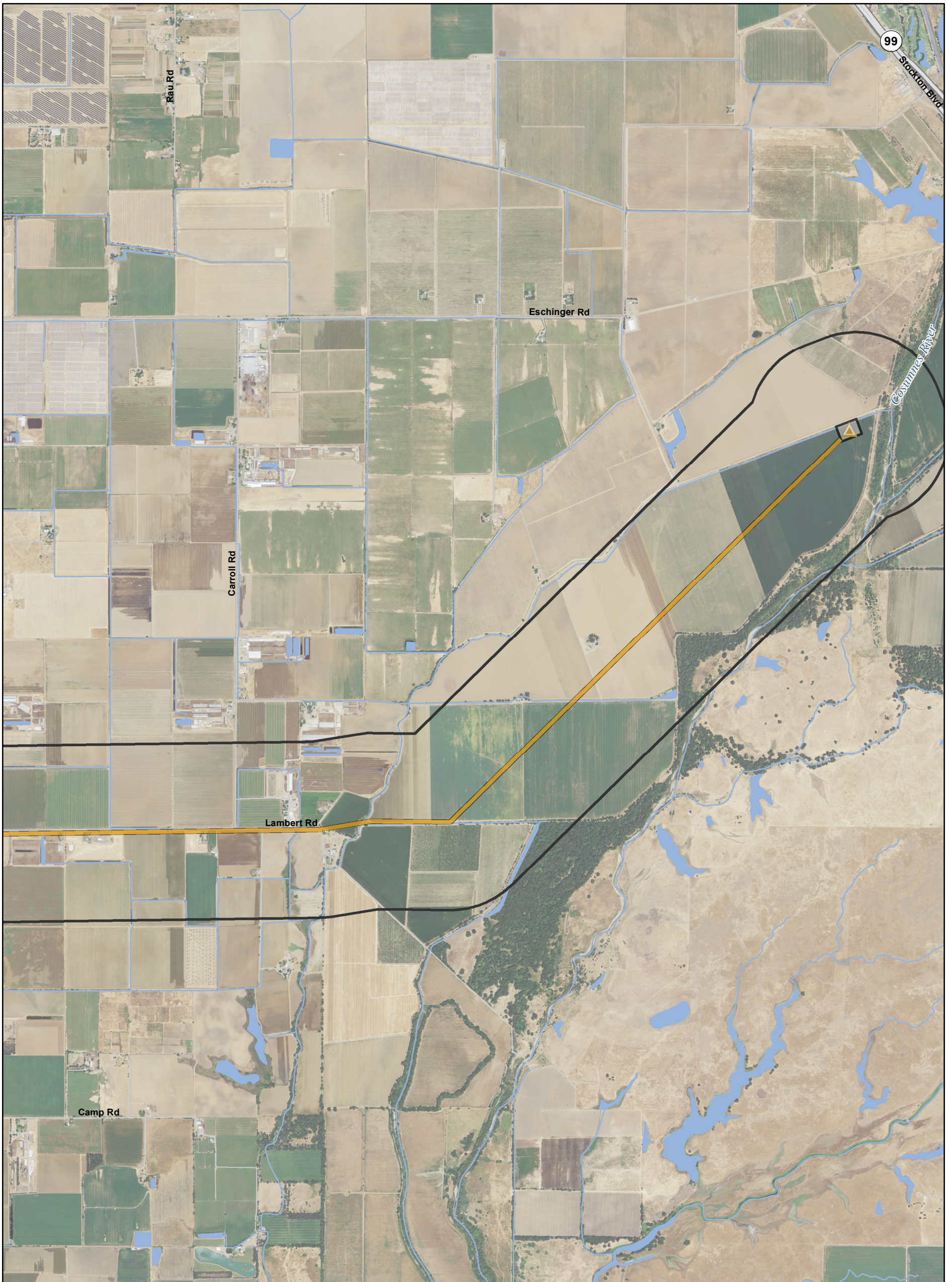
<ul style="list-style-type: none"> <li>Suisun Marsh Boundary</li> <li><b>Action Area</b></li> <li>Other Facilities</li> <li>Other Facility</li> <li>Upstream River</li> <li>Legal Delta and Corridor</li> <li>Transmission Line</li> <li><b>Utility Features</b></li> <li>Point of Interconnection</li> <li>Substation</li> <li>Local Tap</li> </ul>	<ul style="list-style-type: none"> <li>Point of Interconnection</li> <li>Substation</li> <li>Local Tap</li> <li>500 kV (Existing)</li> <li>500 kV (Proposed)</li> <li>230 kV (Existing)</li> <li>230 kV (Proposed)</li> <li>230/34.5 kV (Proposed)</li> <li>69 kV (Proposed)</li> </ul>	<ul style="list-style-type: none"> <li><b>Engineering Features</b></li> <li>Intake</li> <li>Junction Structure</li> <li>Main Construction Shaft</li> <li>Ventilation/Access Shaft</li> <li>Canal</li> <li>HOR Gate</li> <li>Permanent Access Road</li> <li>Siphon</li> </ul>	<ul style="list-style-type: none"> <li>Temporary Access Road</li> <li>Tunnel</li> <li>Tunnel Conveyor</li> <li>Canal</li> <li>Cofferdam</li> <li>Control Structure</li> <li>Dredging</li> <li>Electrical Substation</li> <li>Emergency Generator</li> <li>Facility Access</li> <li>Facility Grounds</li> <li>Fill Pad</li> </ul>	<ul style="list-style-type: none"> <li>Forebay</li> <li>Forebay Embankment</li> <li>Forebay Inlet Structure</li> <li>Forebay Outlet Structure</li> <li>Forebay Overflow</li> <li>Forebay Overflow Structure</li> <li>Fuel Tank</li> <li>Gravity-Bypass</li> <li>Channel Spillway</li> <li>Intake</li> <li>MCC/Electrical Building</li> <li>Office Trailer</li> </ul>	<ul style="list-style-type: none"> <li>Outlet Tower</li> <li>Overflow Containment</li> <li>Berm</li> <li>Piping</li> <li>Public Road</li> <li>Pumping Plant</li> <li>Sediment Basin</li> <li>Solids Lagoon</li> <li>Staging</li> <li>Storage</li> <li>Storage/Detention Tank</li> <li>Water Treatment Facility</li> </ul>	<ul style="list-style-type: none"> <li>Permanent Subsurface Impact</li> <li>Permanent Surface Impact</li> <li>Temporary Surface Impact</li> <li>Reusable Tunnel Material Area</li> <li>Barge Unloading Facility</li> <li>Fuel Station</li> <li>Concrete Batch Plant</li> </ul>
--	---	--	--	--	---	--

0 1,000 2,000

Feet

Sources: Diversion Facilities Delta Vision 2012; ICF Action Area 2015; DWR DCE Engineering CCO (rev 5b); NAIP 2014





T:\WG\GIS\33\_00\GISRequest\_11\FID\Deliverable\_10\FID\ENV\29\_15\_BA\_Mpbk\_Ch3.mxd 20150929 4:33:43 PM

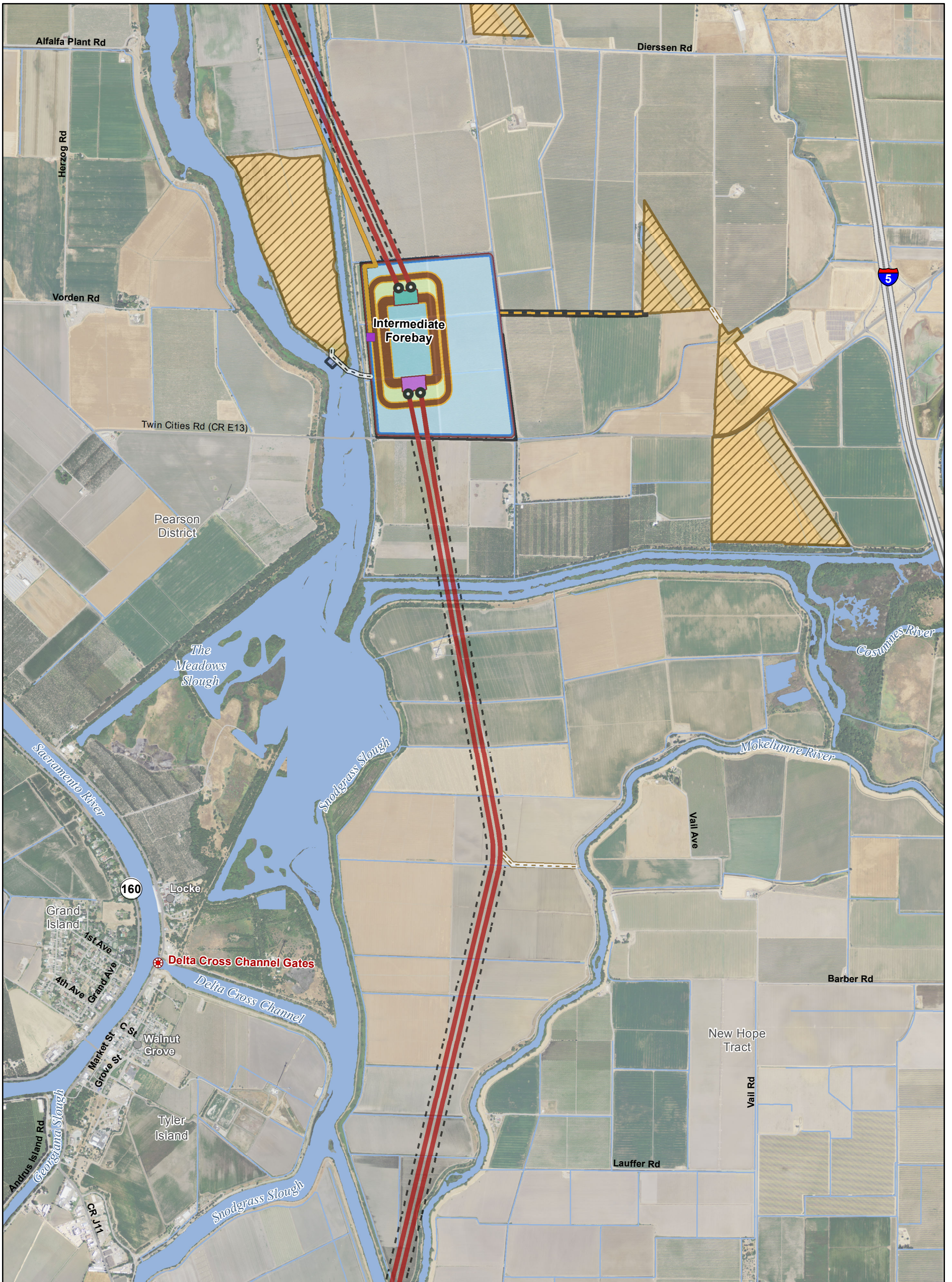
<ul style="list-style-type: none"> <li> Suisun Marsh Boundary</li> <li><b>Action Area</b></li> <li> Other Facilities</li> <li> Other Facility</li> <li> Upstream River</li> <li> Legal Delta and Transmission Line Corridor</li> <li><b>Utility Features</b></li> <li> Point of Interconnection</li> <li> Substation</li> <li> Local Tap</li> </ul>	<ul style="list-style-type: none"> <li> Substation</li> <li> Local Tap</li> <li> 500 kV (Existing)</li> <li> 500 kV (Proposed)</li> <li> 230 kV (Existing)</li> <li> 230 kV (Proposed)</li> <li> 230/34.5 kV (Proposed)</li> <li> 69 kV (Proposed)</li> </ul>	<ul style="list-style-type: none"> <li><b>Engineering Features</b></li> <li> Intake</li> <li> Junction Structure</li> <li> Main Construction Shaft</li> <li> Ventilation/Access Shaft</li> <li> Canal</li> <li> HOR Gate</li> <li> Permanent Access Road</li> <li> Siphon</li> </ul>	<ul style="list-style-type: none"> <li> Temporary Access Road</li> <li> Tunnel</li> <li> Tunnel Conveyor</li> <li> Canal</li> <li> Cofferdam</li> <li> Control Structure</li> <li> Dredging</li> <li> Electrical Substation</li> <li> Emergency Generator</li> <li> Facility Access</li> <li> Facility Grounds</li> <li> Fill Pad</li> </ul>	<ul style="list-style-type: none"> <li> Forebay</li> <li> Forebay Embankment</li> <li> Forebay Inlet Structure</li> <li> Forebay Outlet Structure</li> <li> Forebay Overflow Structure</li> <li> Forebay Overflow Structure</li> <li> Fuel Tank</li> <li> Gravity-Bypass Channel Spillway</li> <li> Intake</li> <li> MCC/Electrical Building</li> <li> Office Trailer</li> </ul>	<ul style="list-style-type: none"> <li> Outlet Tower</li> <li> Overflow Containment Berm</li> <li> Piping</li> <li> Public Road</li> <li> Pumping Plant</li> <li> Sediment Basin</li> <li> Solids Lagoon</li> <li> Staging</li> <li> Storage</li> <li> Storage/Detention Tank</li> <li> Water Treatment Facility</li> </ul>	<ul style="list-style-type: none"> <li> Permanent Subsurface Impact</li> <li> Permanent Surface Impact</li> <li> Temporary Surface Impact</li> <li> Reusable Tunnel Material Area</li> <li> Barge Unloading Facility</li> <li> Fuel Station</li> <li> Concrete Batch Plant</li> </ul>
---	---	--	--	--	---	---

0 1,000 2,000  
Feet

N

Sources: Diversion Facilities Delta Vision 2012; ICF Action Area 2015; DWR DCE Engineering CCO (rev 5b); NAIP 2014





T:\WGI\38\GIS\_33\_00\GISRequest\_11\FID\Deliverable\_10\FEN\129\_15\_BA\_Mpbk\_Ch3.mxd 20150929 4:38:29 PM

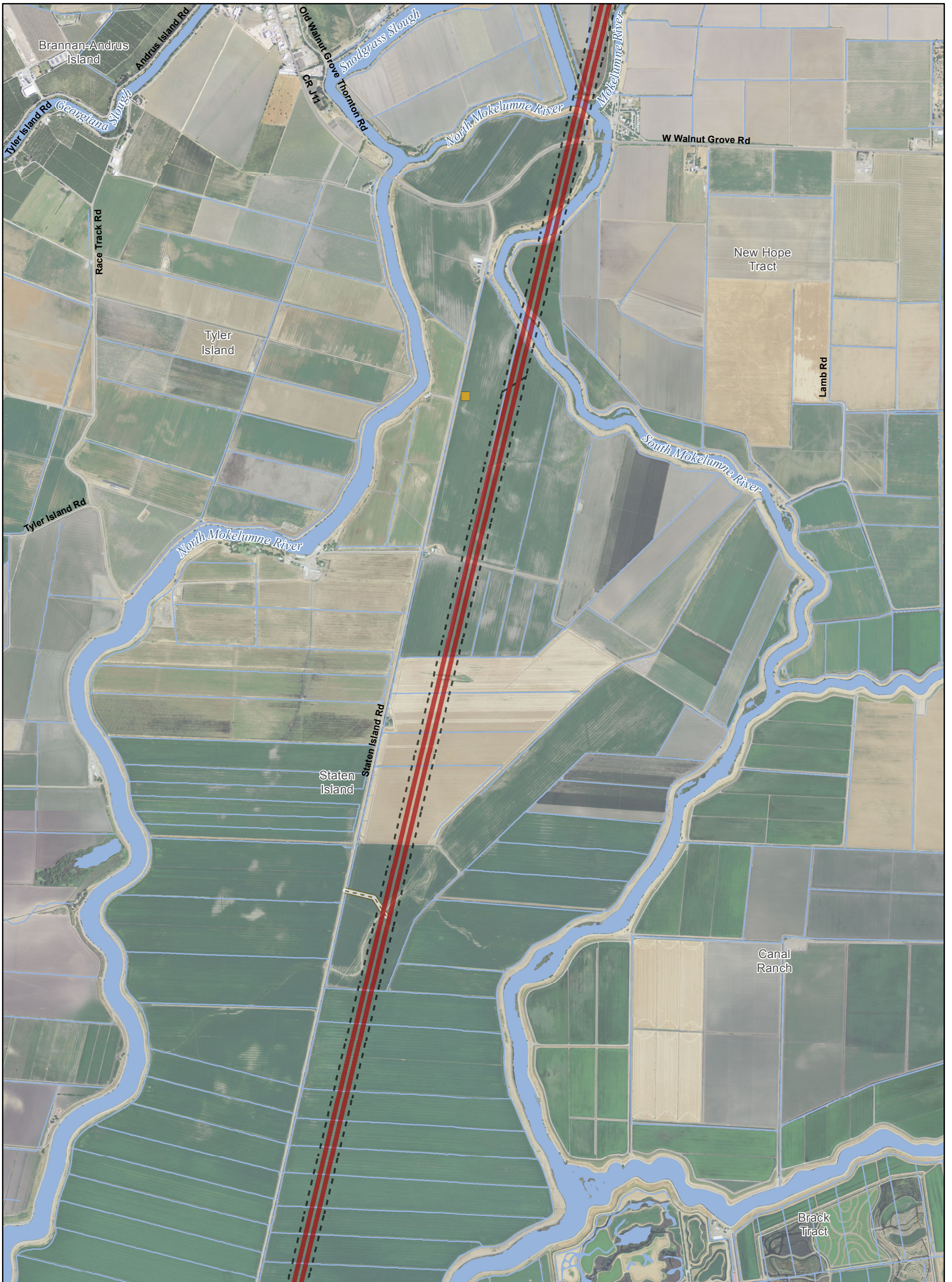
<ul style="list-style-type: none"> <li> Suisun Marsh Boundary</li> <li><b>Action Area</b></li> <li> Other Facility</li> <li> Other Facility</li> <li> Upstream River</li> <li> Legal Delta and Transmission Line Corridor</li> <li><b>Utility Features</b></li> <li> Point of Interconnection</li> <li> Substation</li> <li> Local Tap</li> </ul>	<ul style="list-style-type: none"> <li> Point of Interconnection</li> <li> Substation</li> <li> Local Tap</li> <li> 500 kV (Existing)</li> <li> 500 kV (Proposed)</li> <li> 230 kV (Existing)</li> <li> 230 kV (Proposed)</li> <li> 230/34.5 kV (Proposed)</li> <li> 69 kV (Proposed)</li> </ul>	<ul style="list-style-type: none"> <li><b>Engineering Features</b></li> <li> Intake</li> <li> Junction Structure</li> <li> Main Construction Shaft</li> <li> Ventilation/Access Shaft</li> <li> Canal</li> <li> HOR Gate</li> <li> Permanent Access Road</li> <li> Siphon</li> </ul>	<ul style="list-style-type: none"> <li> Temporary Access Road</li> <li> Tunnel</li> <li> Tunnel Conveyor</li> <li> Canal</li> <li> Cofferdam</li> <li> Control Structure</li> <li> Dredging</li> <li> Electrical Substation</li> <li> Emergency Generator</li> <li> Facility Access</li> <li> Facility Grounds</li> <li> Fill Pad</li> </ul>	<ul style="list-style-type: none"> <li> Forebay</li> <li> Forebay Embankment</li> <li> Forebay Inlet Structure</li> <li> Forebay Outlet Structure</li> <li> Forebay Overflow</li> <li> Forebay Overflow Structure</li> <li> Fuel Tank</li> <li> Gravity-Bypass Channel Spillway</li> <li> Intake</li> <li> MCC/Electrical Building</li> <li> Office Trailer</li> </ul>	<ul style="list-style-type: none"> <li> Outlet Tower</li> <li> Overflow Containment Berm</li> <li> Piping</li> <li> Public Road</li> <li> Pumping Plant</li> <li> Sediment Basin</li> <li> Solids Lagoon</li> <li> Staging</li> <li> Storage</li> <li> Storage/Detention Tank</li> <li> Water Treatment Facility</li> </ul>	<ul style="list-style-type: none"> <li> Permanent Subsurface Impact</li> <li> Permanent Surface Impact</li> <li> Temporary Surface Impact</li> <li> Reusable Tunnel Material Area</li> <li> Barge Unloading Facility</li> <li> Fuel Station</li> <li> Concrete Batch Plant</li> </ul>
---	--	--	--	--	---	---

0 1,000 2,000  
Feet

N

Sources: Diversion Facilities Delta Vision 2012; ICF Action Area 2015; DWR DCE Engineering CCO (rev 5b); NAIP 2014





T:\WGI\38\GIS\_33\_00\GISRequest\_11\FID\Deliverable\_10\ENV\129\_15\_BA\_Mpbk\_Ch3.mxd 20150929 4:43:23 PM

<ul style="list-style-type: none"> <li><span style="border: 1px solid black; display: inline-block; width: 10px; height: 10px; margin-right: 5px;"></span> Suisun Marsh Boundary</li> <li><b>Action Area</b></li> <li><span style="color: red;">●</span> Other Facilities</li> <li><span style="color: blue;">—</span> Other Facility</li> <li><span style="color: green;">—</span> Upstream River</li> <li><span style="color: blue;">—</span> Legal Delta and Transmission Line Corridor</li> <li><b>Utility Features</b></li> <li><span style="color: yellow;">▲</span> Point of Interconnection</li> <li><span style="color: purple;">■</span> Substation</li> <li><span style="color: orange;">■</span> Local Tap</li> </ul>	<ul style="list-style-type: none"> <li><span style="color: purple;">▲</span> Point of Interconnection</li> <li><span style="color: orange;">■</span> Substation</li> <li><span style="color: yellow;">■</span> Local Tap</li> <li><span style="color: green;">—</span> 500 kV (Existing)</li> <li><span style="color: lightgreen;">—</span> 500 kV (Proposed)</li> <li><span style="color: brown;">—</span> 230 kV (Existing)</li> <li><span style="color: tan;">—</span> 230 kV (Proposed)</li> <li><span style="color: pink;">—</span> 230/34.5 kV (Proposed)</li> <li><span style="color: purple;">—</span> 69 kV (Proposed)</li> </ul>	<ul style="list-style-type: none"> <li><b>Engineering Features</b></li> <li><span style="color: black;">■</span> Intake</li> <li><span style="color: black;">▲</span> Junction Structure</li> <li><span style="color: black;">●</span> Main Construction Shaft</li> <li><span style="color: black;">○</span> Ventilation/Access Shaft</li> <li><span style="color: black;">■</span> Canal</li> <li><span style="color: green;">—</span> HOR Gate</li> <li><span style="color: black;">—</span> Permanent Access Road</li> <li><span style="color: black;">—</span> Siphon</li> </ul>	<ul style="list-style-type: none"> <li><span style="color: brown;">—</span> Temporary Access Road</li> <li><span style="color: red;">—</span> Tunnel</li> <li><span style="color: brown;">—</span> Tunnel Conveyor</li> <li><span style="color: blue;">—</span> Canal</li> <li><span style="color: green;">—</span> Cofferdam</li> <li><span style="color: yellow;">—</span> Control Structure</li> <li><span style="color: orange;">—</span> Dredging</li> <li><span style="color: orange;">—</span> Electrical Substation</li> <li><span style="color: yellow;">—</span> Emergency Generator</li> <li><span style="color: brown;">—</span> Facility Access</li> <li><span style="color: lightgreen;">—</span> Facility Grounds</li> <li><span style="color: pink;">—</span> Fill Pad</li> </ul>	<ul style="list-style-type: none"> <li><span style="color: yellow;">■</span> Forebay</li> <li><span style="color: orange;">■</span> Forebay Embankment</li> <li><span style="color: cyan;">■</span> Forebay Inlet Structure</li> <li><span style="color: purple;">■</span> Forebay Outlet Structure</li> <li><span style="color: lightblue;">■</span> Forebay Overflow</li> <li><span style="color: yellowgreen;">■</span> Forebay Overflow Structure</li> <li><span style="color: brown;">■</span> Fuel Tank</li> <li><span style="color: red;">■</span> Gravity-Bypass</li> <li><span style="color: red;">■</span> Channel Spillway</li> <li><span style="color: black;">■</span> Intake</li> <li><span style="color: tan;">■</span> MCC/Electrical Building</li> <li><span style="color: lightgreen;">■</span> Office Trailer</li> </ul>	<ul style="list-style-type: none"> <li><span style="color: red;">■</span> Outlet Tower</li> <li><span style="color: blue;">■</span> Overflow Containment</li> <li><span style="color: blue;">■</span> Berm</li> <li><span style="color: blue;">—</span> Piping</li> <li><span style="color: orange;">■</span> Public Road</li> <li><span style="color: yellow;">■</span> Pumping Plant</li> <li><span style="color: yellowgreen;">■</span> Sediment Basin</li> <li><span style="color: grey;">■</span> Solids Lagoon</li> <li><span style="color: grey;">■</span> Staging</li> <li><span style="color: cyan;">■</span> Storage</li> <li><span style="color: cyan;">■</span> Storage/Detention Tank</li> <li><span style="color: cyan;">■</span> Water Treatment Facility</li> </ul>	<ul style="list-style-type: none"> <li><span style="color: black;">—</span> Permanent Subsurface Impact</li> <li><span style="color: black;">—</span> Permanent Surface Impact</li> <li><span style="color: grey;">—</span> Temporary Surface Impact</li> <li><span style="color: yellowgreen;">■</span> Reusable Tunnel Material Area</li> <li><span style="color: blue;">■</span> Barge Unloading Facility</li> <li><span style="color: purple;">■</span> Fuel Station</li> <li><span style="color: orange;">■</span> Concrete Batch Plant</li> </ul>
---	--	--	---	---	---	---

0 1,000 2,000

Feet

N

Sources: Diversion Facilities Delta Vision 2012; ICF Action Area 2015; DWR DCE Engineering CCO (rev 5b); NAIP 2014





T:\WG\38\GIS\_33\_00\GISRequest\_11\F\Deliverable\_10\ENVI29\_15\_BA\_Mpbk\_Ch3.mxd 20150929 4:48:22 PM

<ul style="list-style-type: none"> <li> Suisun Marsh Boundary</li> <li><b>Action Area</b></li> <li> Other Facilities</li> <li> Other Facility</li> <li> Upstream River</li> <li> Legal Delta and Corridor</li> <li> Transmission Line</li> <li><b>Utility Features</b></li> <li> Point of Interconnection</li> <li> Substation</li> <li> Local Tap</li> </ul>	<ul style="list-style-type: none"> <li> Point of Interconnection</li> <li> Substation</li> <li> Local Tap</li> <li> 500 kV (Existing)</li> <li> 500 kV (Proposed)</li> <li> 230 kV (Existing)</li> <li> 230 kV (Proposed)</li> <li> 230/34.5 kV (Proposed)</li> <li> 69 kV (Proposed)</li> </ul>	<ul style="list-style-type: none"> <li><b>Engineering Features</b></li> <li> Intake</li> <li> Junction Structure</li> <li> Main Construction Shaft</li> <li> Ventilation/Access Shaft</li> <li> Canal</li> <li> HOR Gate</li> <li> Permanent Access Road</li> <li> Siphon</li> </ul>	<ul style="list-style-type: none"> <li> Temporary Access Road</li> <li> Tunnel</li> <li> Tunnel Conveyor</li> <li> Canal</li> <li> Cofferdam</li> <li> Control Structure</li> <li> Dredging</li> <li> Electrical Substation</li> <li> Emergency Generator</li> <li> Facility Access</li> <li> Facility Grounds</li> <li> Fill Pad</li> </ul>	<ul style="list-style-type: none"> <li> Forebay</li> <li> Forebay Embankment</li> <li> Forebay Inlet Structure</li> <li> Forebay Outlet Structure</li> <li> Forebay Overflow</li> <li> Forebay Overflow Structure</li> <li> Fuel Tank</li> <li> Gravity-Bypass Channel Spillway</li> <li> Intake</li> <li> MCC/Electrical Building</li> <li> Office Trailer</li> </ul>	<ul style="list-style-type: none"> <li> Outlet Tower</li> <li> Overflow Containment</li> <li> Berm</li> <li> Piping</li> <li> Public Road</li> <li> Pumping Plant</li> <li> Sediment Basin</li> <li> Solids Lagoon</li> <li> Staging</li> <li> Storage</li> <li> Storage/Detention Tank</li> <li> Water Treatment Facility</li> </ul>	<ul style="list-style-type: none"> <li> Permanent Subsurface Impact</li> <li> Permanent Surface Impact</li> <li> Temporary Surface Impact</li> <li> Reusable Tunnel Material Area</li> <li> Barge Unloading Facility</li> <li> Fuel Station</li> <li> Concrete Batch Plant</li> </ul>
---	--	--	--	--	---	---

Sources: Diversion Facilities Delta Vision 2012; ICF Action Area 2015; DWR DCE Engineering CCO (rev 5b); NAIP 2014





T:\WG\GIS\33\_00\GISRequest\_11\FID\Deliverable\_10\FID\ENVI29\_15\_BA\_Mpbk\_Ch3.mxd 20150929 4:53:04 PM

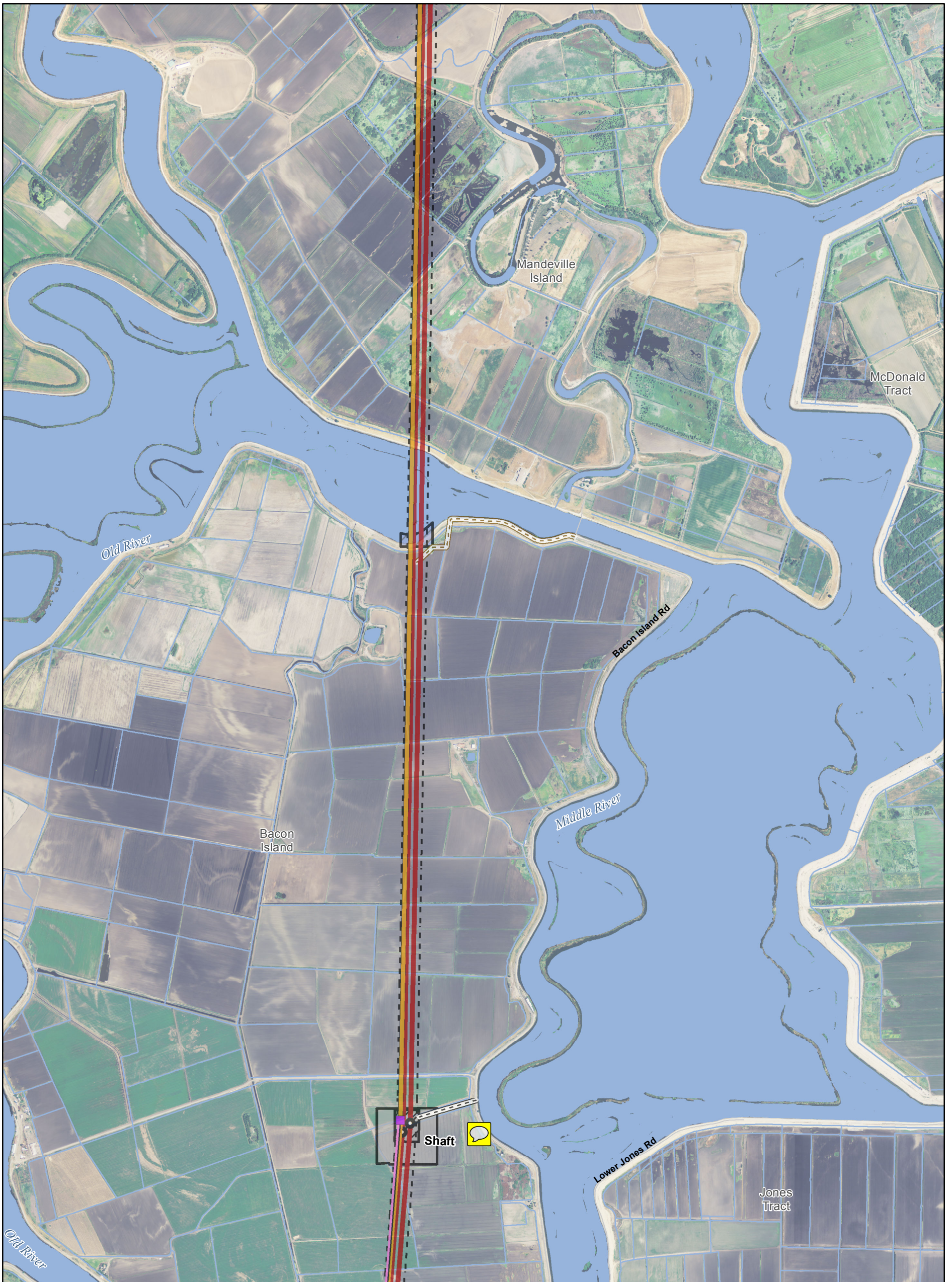
<ul style="list-style-type: none"> <li> Suisun Marsh Boundary</li> <li><b>Action Area</b></li> <li> Other Facilities</li> <li> Other Facility</li> <li> Upstream River</li> <li> Legal Delta and Corridor</li> <li> Transmission Line</li> <li><b>Utility Features</b></li> <li> Point of Interconnection</li> <li> Substation</li> <li> Local Tap</li> </ul>	<ul style="list-style-type: none"> <li> Point of Interconnection</li> <li> Substation</li> <li> Local Tap</li> <li> 500 kV (Existing)</li> <li> 500 kV (Proposed)</li> <li> 230 kV (Existing)</li> <li> 230 kV (Proposed)</li> <li> 230/34.5 kV (Proposed)</li> <li> 69 kV (Proposed)</li> </ul>	<ul style="list-style-type: none"> <li><b>Engineering Features</b></li> <li> Intake</li> <li> Junction Structure</li> <li> Main Construction Shaft</li> <li> Ventilation/Access Shaft</li> <li> Canal</li> <li> HOR Gate</li> <li> Permanent Access Road</li> <li> Siphon</li> </ul>	<ul style="list-style-type: none"> <li> Temporary Access Road</li> <li> Tunnel</li> <li> Tunnel Conveyor</li> <li> Canal</li> <li> Cofferdam</li> <li> Control Structure</li> <li> Dredging</li> <li> Electrical Substation</li> <li> Emergency Generator</li> <li> Facility Access</li> <li> Facility Grounds</li> <li> Fill Pad</li> </ul>	<ul style="list-style-type: none"> <li> Forebay</li> <li> Forebay Embankment</li> <li> Forebay Inlet Structure</li> <li> Forebay Outlet Structure</li> <li> Forebay Overflow</li> <li> Forebay Overflow Structure</li> <li> Fuel Tank</li> <li> Gravity-Bypass</li> <li> Channel Spillway</li> <li> Intake</li> <li> MCC/Electrical Building</li> <li> Office Trailer</li> </ul>	<ul style="list-style-type: none"> <li> Outlet Tower</li> <li> Overflow Containment</li> <li> Berm</li> <li> Piping</li> <li> Public Road</li> <li> Pumping Plant</li> <li> Sediment Basin</li> <li> Solids Lagoon</li> <li> Staging</li> <li> Storage</li> <li> Storage/Retention Tank</li> <li> Water Treatment Facility</li> </ul>	<ul style="list-style-type: none"> <li> Permanent Subsurface Impact</li> <li> Permanent Surface Impact</li> <li> Temporary Surface Impact</li> <li> Reusable Tunnel Material Area</li> <li> Barge Unloading Facility</li> <li> Fuel Station</li> <li> Concrete Batch Plant</li> </ul>
---	--	--	--	--	---	---

0 1,000 2,000  
Feet

N

Sources: Diversion Facilities Delta Vision 2012; ICF Action Area 2015; DWR DCE Engineering CCO (rev 5b); NAIP 2014





T:\WG\38\GIS\_33\_00\GISRequest\_11\FID\Deliverable\_10\FID\ENVI29\_15\_BA\_Mpbk\_Ch3.mxd 20150929 4:56:05 PM

<ul style="list-style-type: none"> <li> Suisun Marsh Boundary</li> <li><b>Action Area</b></li> <li> Other Facilities</li> <li> Other Facility</li> <li> Upstream River</li> <li> Legal Delta and Transmission Line Corridor</li> <li><b>Utility Features</b></li> <li> Point of Interconnection</li> <li> Substation</li> <li> Local Tap</li> </ul>	<ul style="list-style-type: none"> <li> Point of Interconnection</li> <li> Substation</li> <li> Local Tap</li> <li> 500 kV (Existing)</li> <li> 500 kV (Proposed)</li> <li> 230 kV (Existing)</li> <li> 230 kV (Proposed)</li> <li> 230/34.5 kV (Proposed)</li> <li> 69 kV (Proposed)</li> </ul>	<ul style="list-style-type: none"> <li><b>Engineering Features</b></li> <li> Intake</li> <li> Junction Structure</li> <li> Main Construction Shaft</li> <li> Ventilation/Access Shaft</li> <li> Canal</li> <li> HOR Gate</li> <li> Permanent Access Road</li> <li> Siphon</li> </ul>	<ul style="list-style-type: none"> <li> Temporary Access Road</li> <li> Tunnel</li> <li> Tunnel Conveyor</li> <li> Canal</li> <li> Cofferdam</li> <li> Control Structure</li> <li> Dredging</li> <li> Electrical Substation</li> <li> Emergency Generator</li> <li> Facility Access</li> <li> Facility Grounds</li> <li> Fill Pad</li> </ul>	<ul style="list-style-type: none"> <li> Forebay</li> <li> Forebay Embankment</li> <li> Forebay Inlet Structure</li> <li> Forebay Outlet Structure</li> <li> Forebay Overflow</li> <li> Forebay Overflow Structure</li> <li> Fuel Tank</li> <li> Gravity-Bypass Channel Spillway</li> <li> Intake</li> <li> MCC/Electrical Building</li> <li> Office Trailer</li> </ul>	<ul style="list-style-type: none"> <li> Outlet Tower</li> <li> Overflow Containment Berm</li> <li> Piping</li> <li> Public Road</li> <li> Pumping Plant</li> <li> Sediment Basin</li> <li> Solids Lagoon</li> <li> Staging</li> <li> Storage</li> <li> Storage/Detention Tank</li> <li> Water Treatment Facility</li> </ul>	<ul style="list-style-type: none"> <li> Permanent Subsurface Impact</li> <li> Permanent Surface Impact</li> <li> Temporary Surface Impact</li> <li> Reusable Tunnel Material Area</li> <li> Barge Unloading Facility</li> <li> Fuel Station</li> <li> Concrete Batch Plant</li> </ul>
---	--	--	--	--	---	---

0 1,000 2,000

Feet

Sources: Diversion Facilities Delta Vision 2012; ICF Action Area 2015; DWR DCE Engineering CCO (rev 5b); NAIP 2014





T:\WG138\GIS\_33\_00\GISRequest\_11\FID\Deliverable\_10\FEN\129\_15\_BA\_Mpbk\_Ch3.mxd 20150929 5:42:20 PM

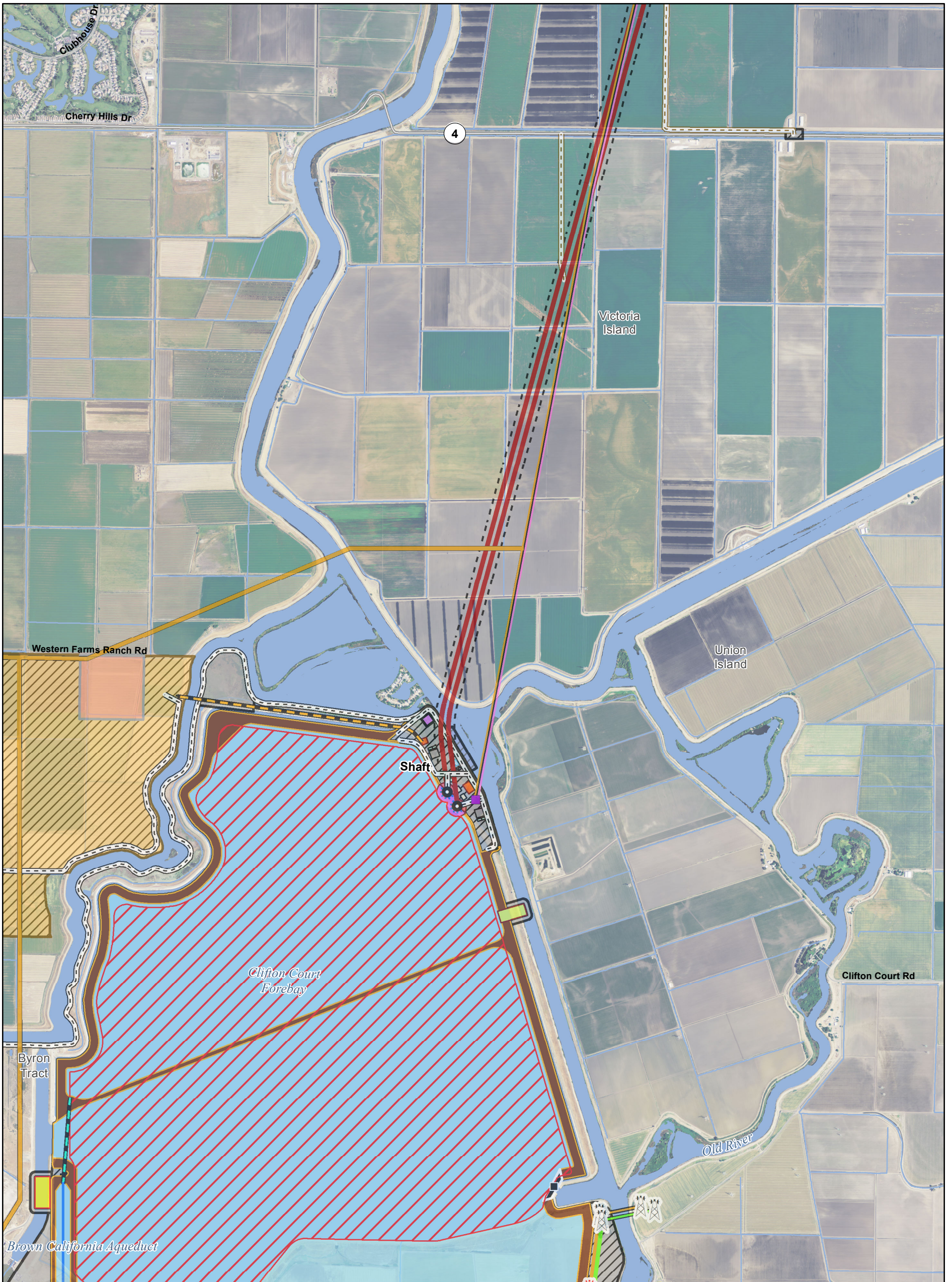
<ul style="list-style-type: none"> <li> Suisun Marsh Boundary</li> <li><b>Action Area</b></li> <li> Other Facilities</li> <li> Other Facility</li> <li> Upstream River</li> <li> Legal Delta and Transmission Line Corridor</li> <li><b>Utility Features</b></li> <li> Point of Interconnection</li> <li> Substation</li> <li> Local Tap</li> </ul>	<ul style="list-style-type: none"> <li> Point of Interconnection</li> <li> Substation</li> <li> Local Tap</li> <li> 500 kV (Existing)</li> <li> 500 kV (Proposed)</li> <li> 230 kV (Existing)</li> <li> 230 kV (Proposed)</li> <li> 230/34.5 kV (Proposed)</li> <li> 69 kV (Proposed)</li> </ul>	<ul style="list-style-type: none"> <li><b>Engineering Features</b></li> <li> Intake</li> <li> Junction Structure</li> <li> Main Construction Shaft</li> <li> Ventilation/Access Shaft</li> <li> Canal</li> <li> HOR Gate</li> <li> Permanent Access Road</li> <li> Siphon</li> </ul>	<ul style="list-style-type: none"> <li> Temporary Access Road</li> <li> Tunnel</li> <li> Tunnel Conveyor</li> <li> Canal</li> <li> Cofferdam</li> <li> Control Structure</li> <li> Dredging</li> <li> Electrical Substation</li> <li> Emergency Generator</li> <li> Facility Access</li> <li> Facility Grounds</li> <li> Fill Pad</li> </ul>	<ul style="list-style-type: none"> <li> Forebay</li> <li> Forebay Embankment</li> <li> Forebay Inlet Structure</li> <li> Forebay Outlet Structure</li> <li> Forebay Overflow Structure</li> <li> Forebay Overflow Structure</li> <li> Fuel Tank</li> <li> Gravity-Bypass Channel Spillway</li> <li> Intake</li> <li> MCC/Electrical Building</li> <li> Office Trailer</li> </ul>	<ul style="list-style-type: none"> <li> Outlet Tower</li> <li> Overflow Containment</li> <li> Berm</li> <li> Piping</li> <li> Public Road</li> <li> Pumping Plant</li> <li> Sediment Basin</li> <li> Solids Lagoon</li> <li> Staging Area</li> <li> Storage</li> <li> Storage/Detention Tank</li> <li> Water Treatment Facility</li> </ul>	<ul style="list-style-type: none"> <li> Permanent Subsurface Impact</li> <li> Permanent Surface Impact</li> <li> Temporary Surface Impact</li> <li> Reusable Tunnel Material Area</li> <li> Barge Unloading Facility</li> <li> Fuel Station</li> <li> Concrete Batch Plant</li> </ul>
---	--	--	--	--	--	---

0 1,000 2,000  
Feet

N

Sources: Diversion Facilities Delta Vision 2012; ICF Action Area 2015; DWR DCE Engineering CCO (rev 5b); NAIP 2014





T:\WG\GIS\33\_00\GISRequest\_11\FID\Deliverable\_10\FID\ENVI29\_15\_BA\_Mpbk\_Ch3.mxd 20150929 5:07:37 PM

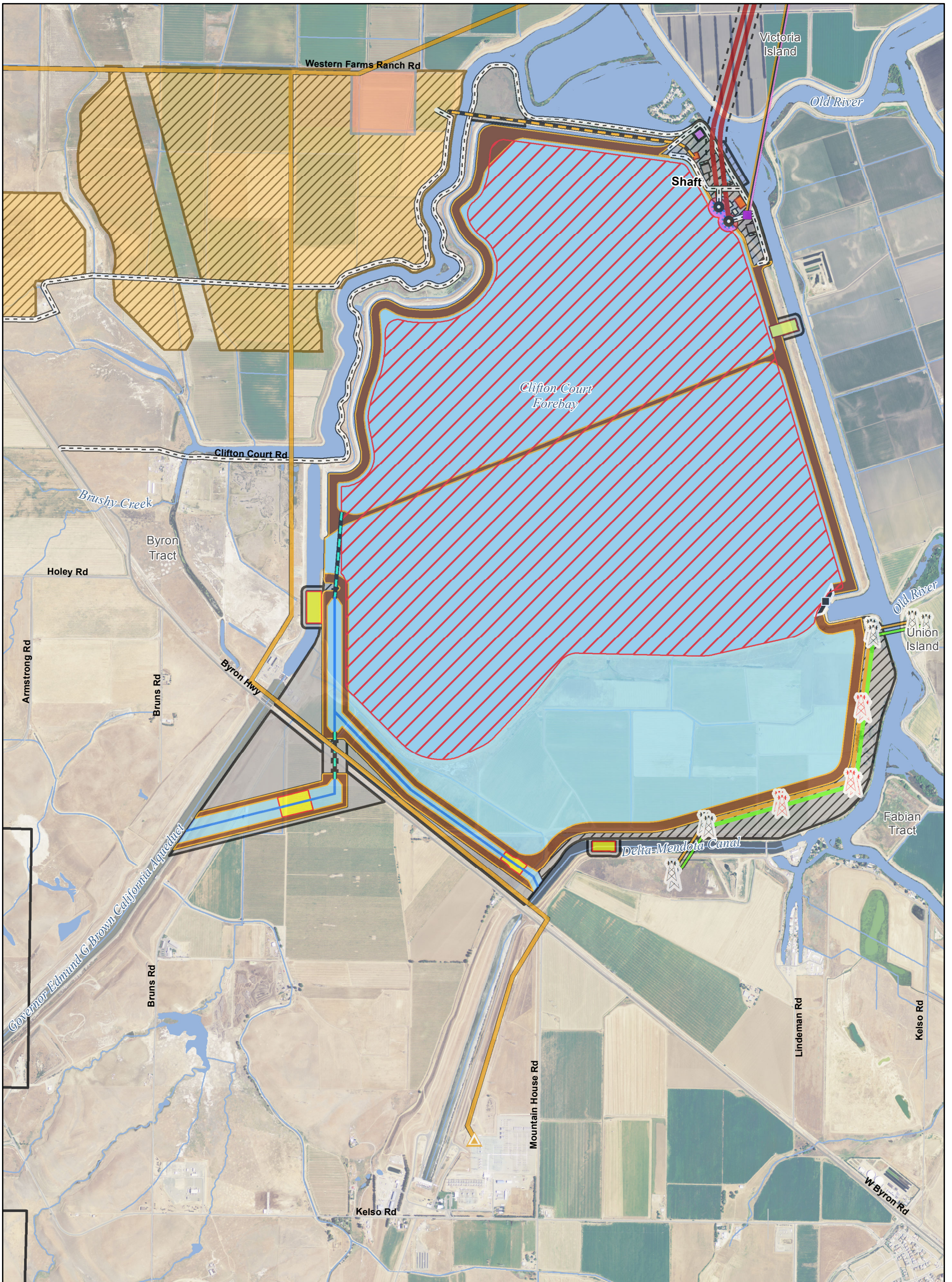
<ul style="list-style-type: none"> <li> Suisun Marsh Boundary</li> <li><b>Action Area</b></li> <li> Other Facilities</li> <li> Other Facility</li> <li> Upstream River</li> <li> Legal Delta and Transmission Line Corridor</li> <li><b>Utility Features</b></li> <li> Point of Interconnection</li> <li> Substation</li> <li> Local Tap</li> </ul>	<ul style="list-style-type: none"> <li> Point of Interconnection</li> <li> Substation</li> <li> Local Tap</li> <li> 500 kV (Existing)</li> <li> 500 kV (Proposed)</li> <li> 230 kV (Existing)</li> <li> 230 kV (Proposed)</li> <li> 230/34.5 kV (Proposed)</li> <li> 69 kV (Proposed)</li> </ul>	<ul style="list-style-type: none"> <li><b>Engineering Features</b></li> <li> Intake</li> <li> Junction Structure</li> <li> Main Construction Shaft</li> <li> Ventilation/Access Shaft</li> <li> Canal</li> <li> HOR Gate</li> <li> Permanent Access Road</li> <li> Siphon</li> </ul>	<ul style="list-style-type: none"> <li> Temporary Access Road</li> <li> Tunnel</li> <li> Tunnel Conveyor</li> <li> Canal</li> <li> Cofferdam</li> <li> Control Structure</li> <li> Dredging</li> <li> Electrical Substation</li> <li> Emergency Generator</li> <li> Facility Access</li> <li> Facility Grounds</li> <li> Fill Pad</li> </ul>	<ul style="list-style-type: none"> <li> Forebay</li> <li> Forebay Embankment</li> <li> Forebay Inlet Structure</li> <li> Forebay Outlet Structure</li> <li> Forebay Overflow</li> <li> Forebay Overflow Structure</li> <li> Fuel Tank</li> <li> Gravity-Bypass Channel Spillway</li> <li> Intake</li> <li> MCC/Electrical Building</li> <li> Office Trailer</li> </ul>	<ul style="list-style-type: none"> <li> Outlet Tower</li> <li> Overflow Containment Berm</li> <li> Piping</li> <li> Public Road</li> <li> Pumping Plant</li> <li> Sediment Basin</li> <li> Solids Lagoon</li> <li> Staging</li> <li> Storage</li> <li> Storage/Detention Tank</li> <li> Water Treatment Facility</li> </ul>	<ul style="list-style-type: none"> <li> Permanent Subsurface Impact</li> <li> Permanent Surface Impact</li> <li> Temporary Surface Impact</li> <li> Reusable Tunnel Material Area</li> <li> Barge Unloading Facility</li> <li> Fuel Station</li> <li> Concrete Batch Plant</li> </ul>
---	--	--	--	--	---	---

0 1,000 2,000  
Feet

N

Sources: Diversion Facilities Delta Vision 2012; ICF Action Area 2015; DWR DCE Engineering CCO (rev 5b); NAIP 2014





T:\WG\38\GIS\_33\_00\GISRequest\_11\F\Deliverable\_10\EN\129\_15\_BA\_Mpbk\_Ch3.mxd 20150929 5:12:10 PM

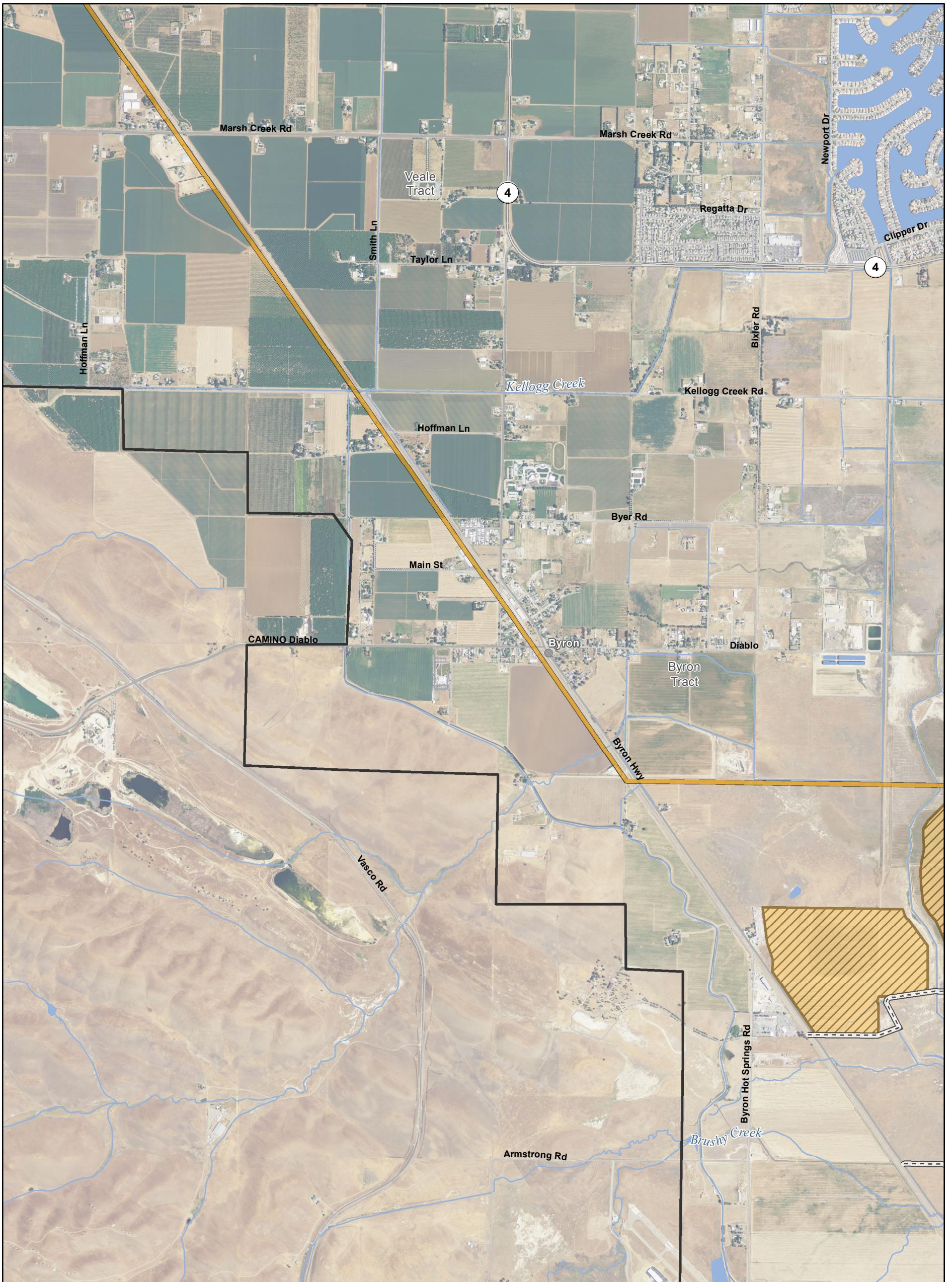
<ul style="list-style-type: none"> <li> Suisun Marsh Boundary</li> <li><b>Action Area</b></li> <li> Other Facilities</li> <li> Other Facility</li> <li> Upstream River</li> <li> Legal Delta and Transmission Line Corridor</li> <li><b>Utility Features</b></li> <li> Point of Interconnection</li> <li> Substation</li> <li> Local Tap</li> </ul>	<ul style="list-style-type: none"> <li> Substation</li> <li> Local Tap</li> <li> 500 kV (Existing)</li> <li> 500 kV (Proposed)</li> <li> 230 kV (Existing)</li> <li> 230 kV (Proposed)</li> <li> 230/34.5 kV (Proposed)</li> <li> 69 kV (Proposed)</li> </ul>	<ul style="list-style-type: none"> <li><b>Engineering Features</b></li> <li> Intake</li> <li> Junction Structure</li> <li> Main Construction Shaft</li> <li> Ventilation/Access Shaft</li> <li> Canal</li> <li> HOR Gate</li> <li> Permanent Access Road</li> <li> Siphon</li> </ul>	<ul style="list-style-type: none"> <li> Temporary Access Road</li> <li> Tunnel</li> <li> Tunnel Conveyor</li> <li> Canal</li> <li> Cofferdam</li> <li> Control Structure</li> <li> Dredging</li> <li> Electrical Substation</li> <li> Emergency Generator</li> <li> Facility Access</li> <li> Facility Grounds</li> <li> Fill Pad</li> </ul>	<ul style="list-style-type: none"> <li> Forebay</li> <li> Forebay Embankment</li> <li> Forebay Inlet Structure</li> <li> Forebay Outlet Structure</li> <li> Forebay Overflow Structure</li> <li> Forebay Overflow Structure</li> <li> Fuel Tank</li> <li> Gravity-Bypass Channel Spillway</li> <li> Intake</li> <li> MCC/Electrical Building</li> <li> Office Trailer</li> </ul>	<ul style="list-style-type: none"> <li> Outlet Tower</li> <li> Overflow Containment</li> <li> Berm</li> <li> Piping</li> <li> Public Road</li> <li> Pumping Plant</li> <li> Sediment Basin</li> <li> Solids Lagoon</li> <li> Staging</li> <li> Storage</li> <li> Storage/Retention Tank</li> <li> Water Treatment Facility</li> </ul>	<ul style="list-style-type: none"> <li> Permanent Subsurface Impact</li> <li> Permanent Surface Impact</li> <li> Temporary Surface Impact</li> <li> Reusable Tunnel Material Area</li> <li> Barge Unloading Facility</li> <li> Fuel Station</li> <li> Concrete Batch Plant</li> </ul>
---	---	--	--	--	---	---

0 1,000 2,000  
Feet

N

Sources: Diversion Facilities Delta Vision 2012; ICF Action Area 2015; DWR DCE Engineering CCO (rev 5b); NAIP 2014





T:\WG\38\GIS\_33\_00\GISRequest\_11\F\Deliverable\_10\ENVI29\_15\_BA\_Mpbk\_Ch3.mxd 20150929 5:16:37 PM

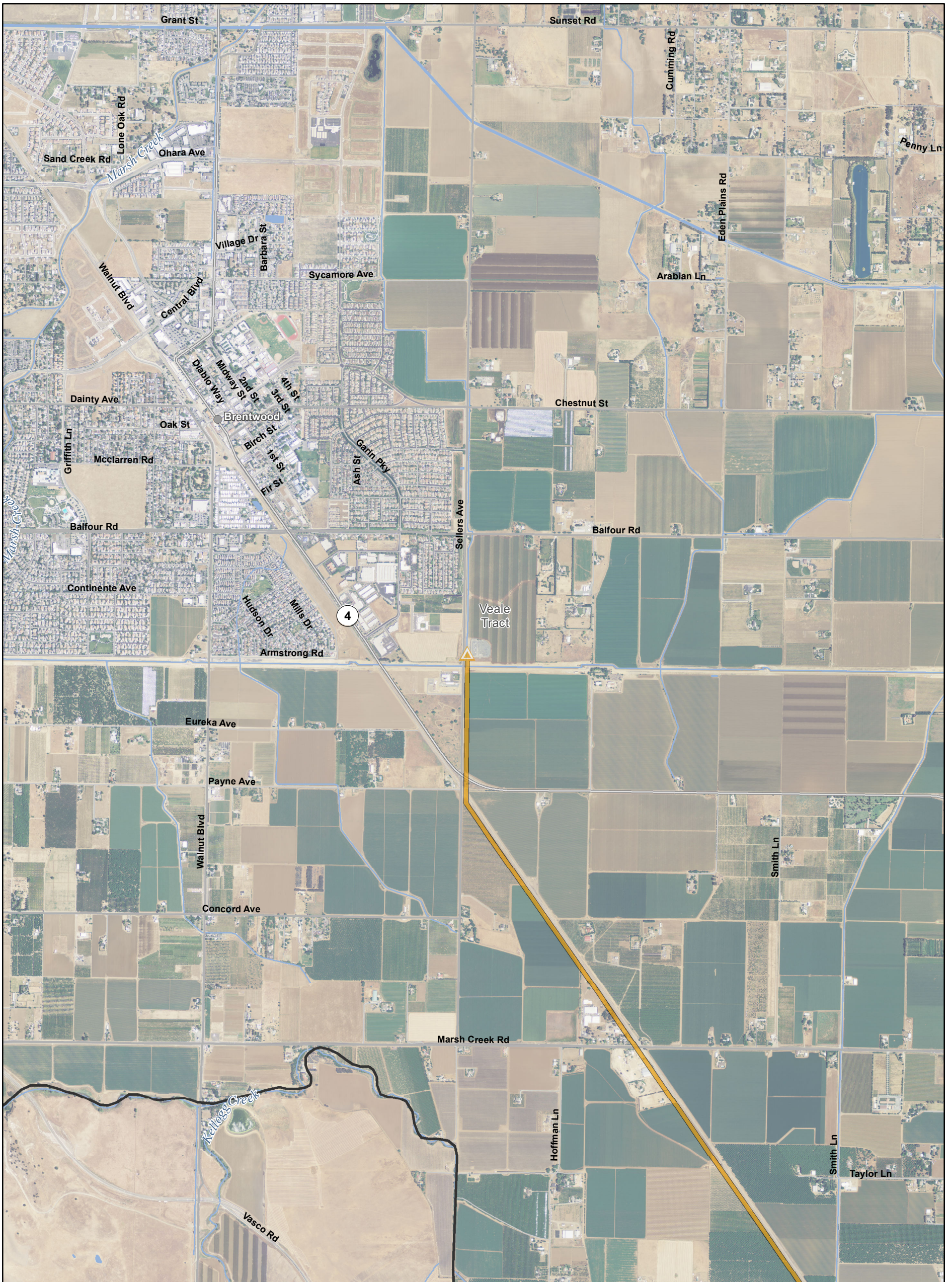
<ul style="list-style-type: none"> <li> Suisun Marsh Boundary</li> <li><b>Action Area</b></li> <li> Other Facilities</li> <li> Other Facility</li> <li> Upstream River</li> <li> Legal Delta and Transmission Line Corridor</li> <li><b>Utility Features</b></li> <li> Point of Interconnection</li> <li> Substation</li> <li> Local Tap</li> </ul>	<ul style="list-style-type: none"> <li> Point of Interconnection</li> <li> Substation</li> <li> Local Tap</li> <li> 500 kV (Existing)</li> <li> 500 kV (Proposed)</li> <li> 230 kV (Existing)</li> <li> 230 kV (Proposed)</li> <li> 230/34.5 kV (Proposed)</li> <li> 69 kV (Proposed)</li> </ul>	<ul style="list-style-type: none"> <li><b>Engineering Features</b></li> <li> Intake</li> <li> Junction Structure</li> <li> Main Construction Shaft</li> <li> Ventilation/Access Shaft</li> <li> Canal</li> <li> HOR Gate</li> <li> Permanent Access Road</li> <li> Siphon</li> </ul>	<ul style="list-style-type: none"> <li> Temporary Access Road</li> <li> Tunnel</li> <li> Tunnel Conveyor</li> <li> Canal</li> <li> Cofferdam</li> <li> Control Structure</li> <li> Dredging</li> <li> Electrical Substation</li> <li> Emergency Generator</li> <li> Facility Access</li> <li> Facility Grounds</li> <li> Fill Pad</li> </ul>	<ul style="list-style-type: none"> <li> Forebay</li> <li> Forebay Embankment</li> <li> Forebay Inlet Structure</li> <li> Forebay Outlet Structure</li> <li> Forebay Overflow</li> <li> Forebay Overflow Structure</li> <li> Fuel Tank</li> <li> Gravity-Bypass Channel Spillway</li> <li> Intake</li> <li> MCC/Electrical Building</li> <li> Office Trailer</li> </ul>	<ul style="list-style-type: none"> <li> Outlet Tower</li> <li> Overflow Containment Berm</li> <li> Piping</li> <li> Public Road</li> <li> Pumping Plant</li> <li> Sediment Basin</li> <li> Solids Lagoon</li> <li> Staging</li> <li> Storage</li> <li> Storage/Detention Tank</li> <li> Water Treatment Facility</li> </ul>	<ul style="list-style-type: none"> <li> Permanent Subsurface Impact</li> <li> Permanent Surface Impact</li> <li> Temporary Surface Impact</li> <li> Reusable Tunnel Material Area</li> <li> Barge Unloading Facility</li> <li> Fuel Station</li> <li> Concrete Batch Plant</li> </ul>
---	--	--	--	--	---	---

0 1,000 2,000  
Feet

N

Sources: Diversion Facilities Delta Vision 2012; ICF Action Area 2015; DWR DCE Engineering CCO (rev 5b); NAIP 2014





T:\WGI\38\GIS\_33\_00\GISRequest\_11\FID\Deliverable\_10\FEN\129\_15\_BA\_Mpbk\_Ch3.mxd 20150929 5:21:38 PM

<ul style="list-style-type: none"> <li> Suisun Marsh Boundary</li> <li><b>Action Area</b></li> <li> Other Facilities</li> <li> Other Facility</li> <li> Upstream River</li> <li> Legal Delta and Transmission Line Corridor</li> <li><b>Utility Features</b></li> <li> Point of Interconnection</li> <li> Substation</li> <li> Local Tap</li> </ul>	<ul style="list-style-type: none"> <li> Substation</li> <li> Local Tap</li> <li> 500 kV (Existing)</li> <li> 500 kV (Proposed)</li> <li> 230 kV (Existing)</li> <li> 230 kV (Proposed)</li> <li> 230/34.5 kV (Proposed)</li> <li> 69 kV (Proposed)</li> </ul>	<ul style="list-style-type: none"> <li><b>Engineering Features</b></li> <li> Intake</li> <li> Junction Structure</li> <li> Main Construction Shaft</li> <li> Ventilation/Access Shaft</li> <li> Canal</li> <li> HOR Gate</li> <li> Permanent Access Road</li> <li> Siphon</li> </ul>	<ul style="list-style-type: none"> <li> Temporary Access Road</li> <li> Tunnel</li> <li> Tunnel Conveyor</li> <li> Canal</li> <li> Cofferdam</li> <li> Control Structure</li> <li> Dredging</li> <li> Electrical Substation</li> <li> Emergency Generator</li> <li> Facility Access</li> <li> Facility Grounds</li> <li> Fill Pad</li> </ul>	<ul style="list-style-type: none"> <li> Forebay</li> <li> Forebay Embankment</li> <li> Forebay Inlet Structure</li> <li> Forebay Outlet Structure</li> <li> Forebay Overflow</li> <li> Forebay Overflow Structure</li> <li> Fuel Tank</li> <li> Gravity-Bypass Channel Spillway</li> <li> Intake</li> <li> MCC/Electrical Building</li> <li> Office Trailer</li> </ul>	<ul style="list-style-type: none"> <li> Outlet Tower</li> <li> Overflow Containment Berm</li> <li> Piping</li> <li> Public Road</li> <li> Pumping Plant</li> <li> Sediment Basin</li> <li> Solids Lagoon</li> <li> Staging</li> <li> Storage</li> <li> Storage/Detention Tank</li> <li> Water Treatment Facility</li> </ul>	<ul style="list-style-type: none"> <li> Permanent Subsurface Impact</li> <li> Permanent Surface Impact</li> <li> Temporary Surface Impact</li> <li> Reusable Tunnel Material Area</li> <li> Barge Unloading Facility</li> <li> Fuel Station</li> <li> Concrete Batch Plant</li> </ul>
---	---	--	--	--	---	---

0 1,000 2,000  
Feet

N

Sources: Diversion Facilities Delta Vision 2012; ICF Action Area 2015; DWR DCE Engineering CCO (rev 5b); NAIP 2014



Y:\BiologicalAssess\ESA\_Sect7\_Permitting\ENV128\_15\_BA\_Mpbk\_Ch3.mxd 20151223 11:50:19 AM



<ul style="list-style-type: none"> <li> Suisun Marsh Boundary</li> <li><b>Action Area</b></li> <li> Other Facility</li> <li> Other Facility</li> <li> Upstream River</li> <li> Legal Delta and Transmission Line Corridor</li> <li><b>Utility Features</b></li> <li> Point of Interconnection</li> <li> Substation</li> <li> Local Tap</li> </ul>	<ul style="list-style-type: none"> <li> Point of Interconnection</li> <li> Substation</li> <li> Local Tap</li> <li> 500 kV (Existing)</li> <li> 500 kV (Proposed)</li> <li> 230 kV (Existing)</li> <li> 230 kV (Proposed)</li> <li> 230/34.5 kV (Proposed)</li> <li> 69 kV (Proposed)</li> <li><b>Engineering Features</b></li> <li> Intake</li> <li> Junction Structure</li> </ul>	<ul style="list-style-type: none"> <li> Main Construction Shaft</li> <li> Ventilation/Access Shaft</li> <li> Canal</li> <li> HOR Gate</li> <li> Permanent Access Road</li> <li> Siphon</li> <li> Temporary Access Road</li> <li> Tunnel</li> <li> Tunnel Conveyor</li> </ul>	<ul style="list-style-type: none"> <li> Canal</li> <li> Cofferdam</li> <li> Control Structure</li> <li> Dredging</li> <li> Electrical Substation</li> <li> Emergency Generator</li> <li> Facility Access Road</li> <li> Facility Grounds</li> <li> Fill Pad</li> <li> Forebay</li> <li> Forebay Embankment</li> <li> Forebay Inlet Structure</li> </ul>	<ul style="list-style-type: none"> <li> Forebay Outlet Structure</li> <li> Forebay Overflow Structure</li> <li> Fuel Tank</li> <li> Gravity-Bypass Channel Spillway</li> <li> Intake</li> <li> MCC/Electrical Building</li> <li> Office Trailer</li> <li> Outlet Tower</li> </ul>	<ul style="list-style-type: none"> <li> Overflow Containment Berm</li> <li> Piping</li> <li> Public Road</li> <li> Pumping Plant</li> <li> Sediment Basin</li> <li> Solids Lagoon</li> <li> Staging Area</li> <li> Storage</li> <li> Storage/Detention Tank</li> <li> Water Treatment Facility</li> </ul>	<ul style="list-style-type: none"> <li> Permanent Subsurface Impact</li> <li> Permanent Surface Impact</li> <li> Temporary Surface Impact</li> <li> Reusable Tunnel Material Area</li> <li> Barge Unloading Facility</li> <li> Fuel Station</li> <li> Concrete Batch Plant</li> </ul>
---	---	--	---	---	---	---

Geotechnical Investigation Zones are not shown in the mapbook. For information on the location of the geotechnical exploration sites refer to Appendix 3.G.

Sources: Diversion Facilities Delta Vision 2012; ICF Action Area 2015; DWR DCE Engineering CCO (rev 5b); NAIP 2014



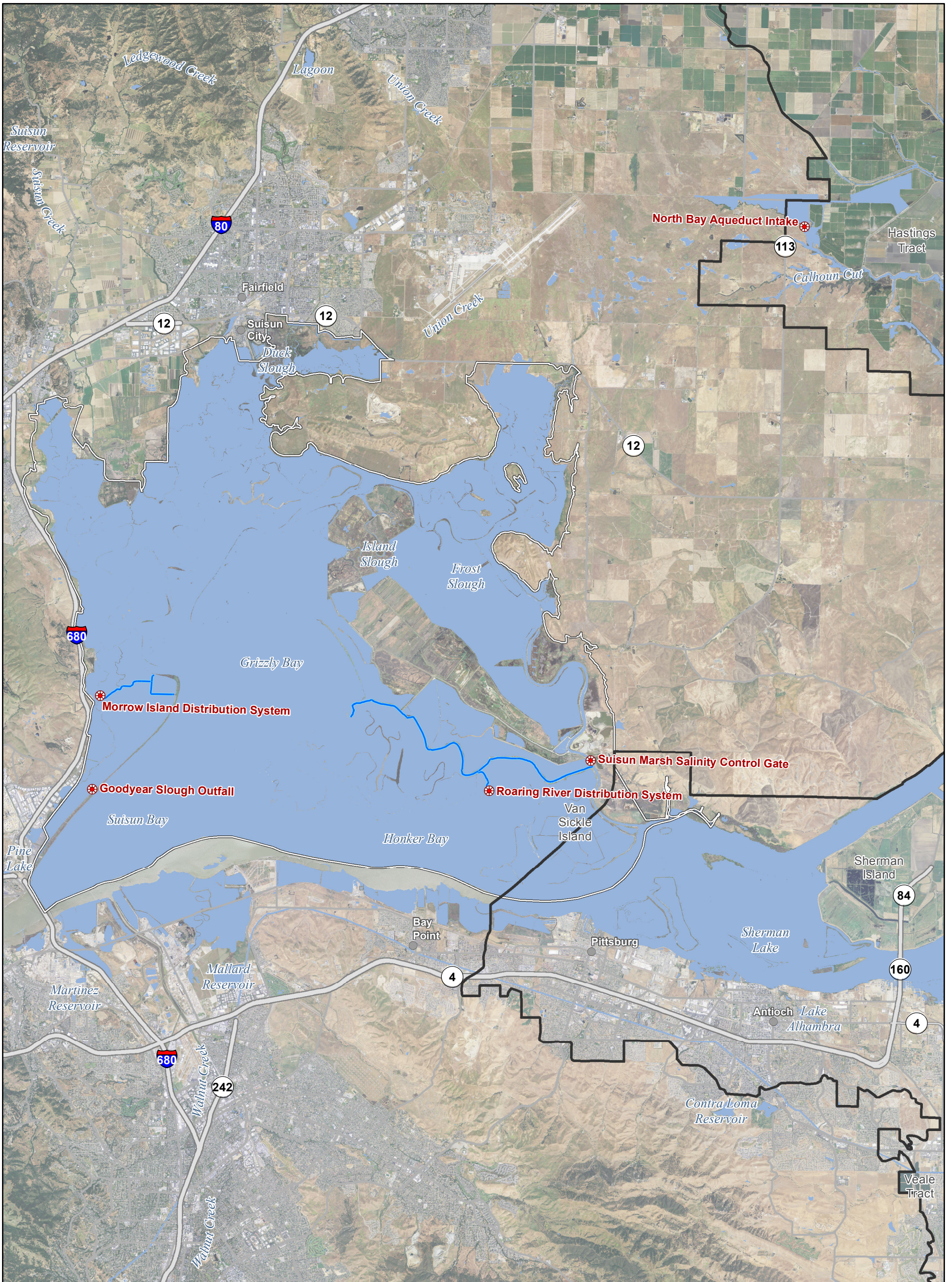


T:\WG\38\GIS\_33\_00\GISRequest\_11\FID\Deliverable\_10\FID\ENV\29\_15\_BA\_Mpbk\_Ch3.mxd 20150929 5:31:04 PM

<ul style="list-style-type: none"> <li> Suisun Marsh Boundary</li> <li><b>Action Area</b></li> <li> Other Facilities</li> <li> Other Facility</li> <li> Upstream River</li> <li> Legal Delta and Transmission Line Corridor</li> <li><b>Utility Features</b></li> <li> Point of Interconnection</li> <li> Substation</li> <li> Local Tap</li> </ul>	<ul style="list-style-type: none"> <li> Substation</li> <li> Local Tap</li> <li> 500 kV (Existing)</li> <li> 500 kV (Proposed)</li> <li> 230 kV (Existing)</li> <li> 230 kV (Proposed)</li> <li> 230/34.5 kV (Proposed)</li> <li> 69 kV (Proposed)</li> </ul>	<ul style="list-style-type: none"> <li><b>Engineering Features</b></li> <li> Intake</li> <li> Junction Structure</li> <li> Main Construction Shaft</li> <li> Ventilation/Access Shaft</li> <li> Canal</li> <li> HOR Gate</li> <li> Permanent Access Road</li> <li> Siphon</li> </ul>	<ul style="list-style-type: none"> <li> Temporary Access Road</li> <li> Tunnel</li> <li> Tunnel Conveyor</li> <li> Canal</li> <li> Cofferdam</li> <li> Control Structure</li> <li> Dredging</li> <li> Electrical Substation</li> <li> Emergency Generator</li> <li> Facility Access</li> <li> Facility Grounds</li> <li> Fill Pad</li> </ul>	<ul style="list-style-type: none"> <li> Forebay</li> <li> Forebay Embankment</li> <li> Forebay Inlet Structure</li> <li> Forebay Outlet Structure</li> <li> Forebay Overflow</li> <li> Forebay Overflow Structure</li> <li> Fuel Tank</li> <li> Gravity-Bypass Channel Spillway</li> <li> Intake</li> <li> MCC/Electrical Building</li> <li> Office Trailer</li> </ul>	<ul style="list-style-type: none"> <li> Outlet Tower</li> <li> Overflow Containment Berm</li> <li> Piping</li> <li> Public Road</li> <li> Pumping Plant</li> <li> Sediment Basin</li> <li> Solids Lagoon</li> <li> Staging</li> <li> Storage</li> <li> Storage/Detention Tank</li> <li> Water Treatment Facility</li> </ul>	<ul style="list-style-type: none"> <li> Permanent Subsurface Impact</li> <li> Permanent Surface Impact</li> <li> Temporary Surface Impact</li> <li> Reusable Tunnel Material Area</li> <li> Barge Unloading Facility</li> <li> Fuel Station</li> <li> Concrete Batch Plant</li> </ul>
---	---	--	--	--	---	---

Sources: Diversion Facilities Delta Vision 2012; ICF Action Area 2015; DWR DCE Engineering CCO (rev 5b); NAIP 2014





T:\WG\38\GIS\_33\_00\GISRequest\_11\F\Deliverable\_10\ENVI29\_15\_BA\_Mpbk\_Ch3.mxd 20150929 5:15:30 PM

<ul style="list-style-type: none"> <li> Suisun Marsh Boundary</li> <li><b>Action Area</b></li> <li> Other Facilities</li> <li> Other Facility</li> <li> Upstream River</li> <li> Legal Delta and Corridor</li> <li> Transmission Line Corridor</li> <li><b>Utility Features</b></li> <li> Point of Interconnection</li> <li> Substation</li> <li> Local Tap</li> </ul>	<ul style="list-style-type: none"> <li> Substation</li> <li> Local Tap</li> <li> 500 kV (Existing)</li> <li> 500 kV (Proposed)</li> <li> 230 kV (Existing)</li> <li> 230 kV (Proposed)</li> <li> 230/34.5 kV (Proposed)</li> <li> 69 kV (Proposed)</li> </ul>	<ul style="list-style-type: none"> <li><b>Engineering Features</b></li> <li> Intake</li> <li> Junction Structure</li> <li> Main Construction Shaft</li> <li> Ventilation/Access Shaft</li> <li> Canal</li> <li> HOR Gate</li> <li> Permanent Access Road</li> <li> Siphon</li> </ul>	<ul style="list-style-type: none"> <li> Temporary Access Road</li> <li> Tunnel</li> <li> Tunnel Conveyor</li> <li> Canal</li> <li> Cofferdam</li> <li> Control Structure</li> <li> Dredging</li> <li> Electrical Substation</li> <li> Emergency Generator</li> <li> Facility Access Road</li> <li> Facility Grounds</li> <li> Fill Pad</li> </ul>	<ul style="list-style-type: none"> <li> Forebay</li> <li> Forebay Embankment</li> <li> Forebay Inlet Structure</li> <li> Forebay Outlet Structure</li> <li> Forebay Overflow</li> <li> Forebay Overflow Structure</li> <li> Fuel Tank</li> <li> Gravity-Bypass Channel Spillway</li> <li> Intake</li> <li> MCC/Electrical Building</li> <li> Office Trailer</li> </ul>	<ul style="list-style-type: none"> <li> Outlet Tower</li> <li> Overflow Containment</li> <li> Berm</li> <li> Piping</li> <li> Public Road</li> <li> Pumping Plant</li> <li> Sediment Basin</li> <li> Solids Lagoon</li> <li> Staging Area</li> <li> Storage</li> <li> Storage/Detention Tank</li> <li> Water Treatment Facility</li> </ul>	<ul style="list-style-type: none"> <li> Permanent Subsurface Impact</li> <li> Permanent Surface Impact</li> <li> Temporary Surface Impact</li> <li> Reusable Tunnel Material Area</li> <li> Barge Unloading Facility</li> <li> Fuel Station</li> <li> Concrete Batch Plant</li> </ul>
--	---	--	---	--	--	---

0 6,000 12,000  
Feet

N

Sources: Diversion Facilities Delta Vision 2012; ICF Action Area 2015; DWR DCE Engineering CCO (rev 5b); NAIP 2014