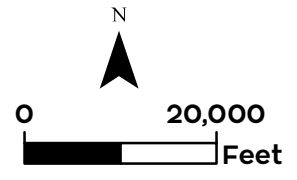


Y:\BiologicalAssess_ESA_Sect7_Permitting\ENV\126_15_SpeciesDistribution_2016.mxd [Doc No: GIS-00204]

- City
- Legal Delta Boundary
- California Red-legged Frog
- Critical Habitat
- Modeled Aquatic Habitat
- Modeled Upland Cover and Dispersal Habitat
- Species Occurrence
- Project Area
- Permanent Transmission Lines
- Temporary Transmission Lines



** Temporary work areas may be restored after construction is complete, however, for the purposes of impact analysis, the effect is considered permanent

Sources: CCO Conveyance, CA WaterFix 2015; Species Occurrences, ICF 2013; Modeled Habitat, ICF 2013, ICF 2015; Critical Habitat, USFWS 2012



**Impacts to California Red-Legged Frog Modeled Habitat from Water Conveyance Facility Construction
Modified Pipeline Tunnel/Clifton Court Forebay Option
Overview**

Y:\Biological\Assess_ESA_Sect7_Permitting\EN\126_15_SpeciesDistribution_2pane_201601.mxd 2016229 [cistb] [Doc No: GIS-00204]



● City	California Red-Legged Frog	▭ Project Area
— Major roads	▬ Critical Habitat	▬ Permanent Transmission Lines
— State and Interstate Highways	■ Modeled aquatic habitat	▬ Temporary Transmission Lines
■ Delta Island	■ Impacted modeled aquatic habitat	
	■ Modeled upland cover and dispersal habitat	
	■ Impacted modeled upland cover and dispersal habitat	

N 0 1,600 Feet

** Temporary work areas may be restored after construction is complete, however, for the purposes of impact analysis, the effect is considered permanent.

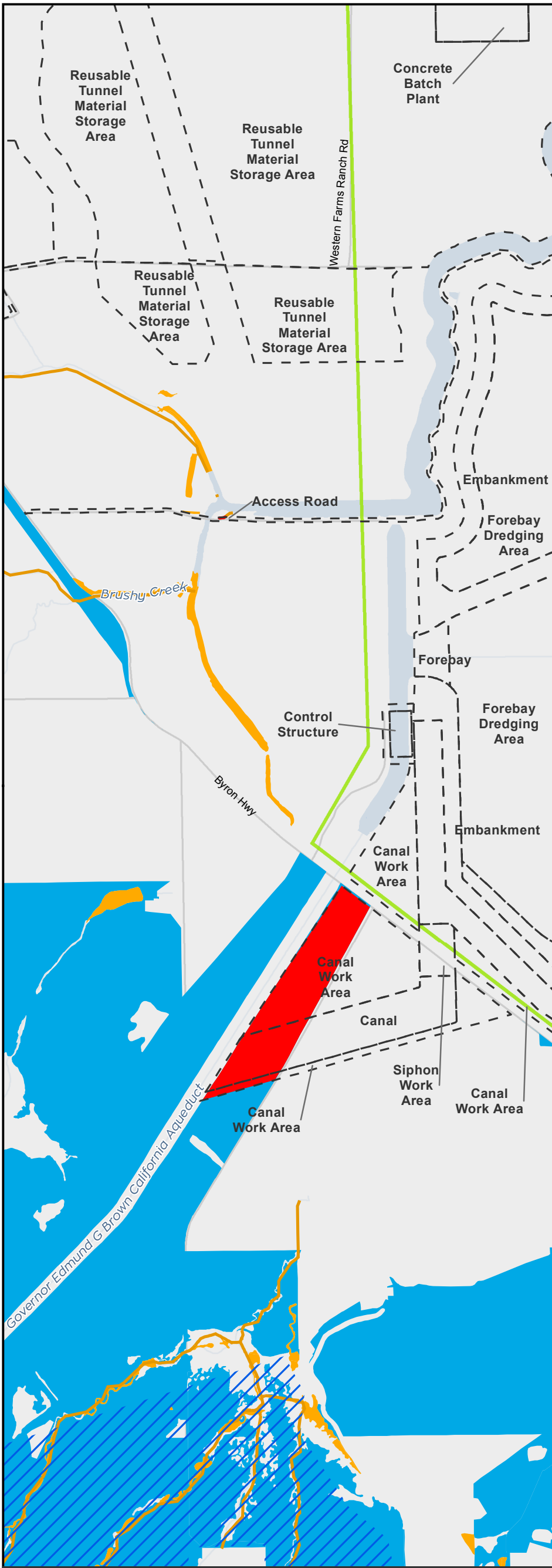
** The location of the transmission lines have not been finalized. Transmission structures will be constructed to have the least impact to the surrounding habitats.



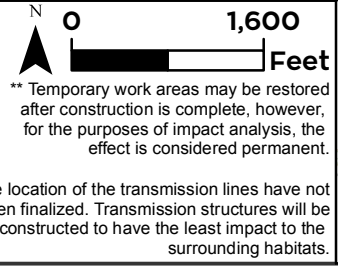
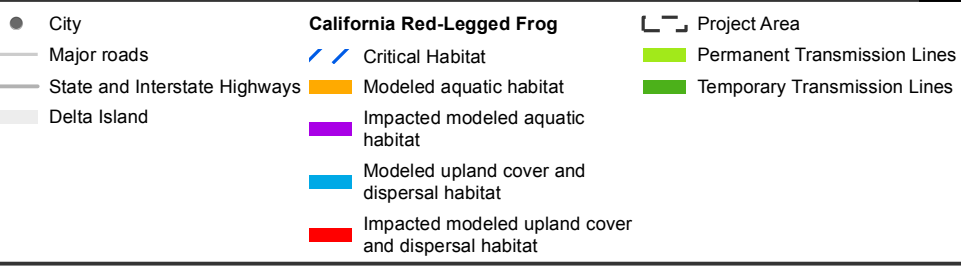
Sources: CCO Conveyance, CA WaterFix 2015; Species Occurrences, ICF 2013; Modeled Habitat, ICF 2013, ICF 2015; NAIP 2014



**Impacts to California Red-Legged Frog Modeled Habitat from Water Conveyance Facility Construction
Modified Pipeline Tunnel/Clifton Court Forebay Option
New Forebay
Figure 6.7-2 of 6.7-5**



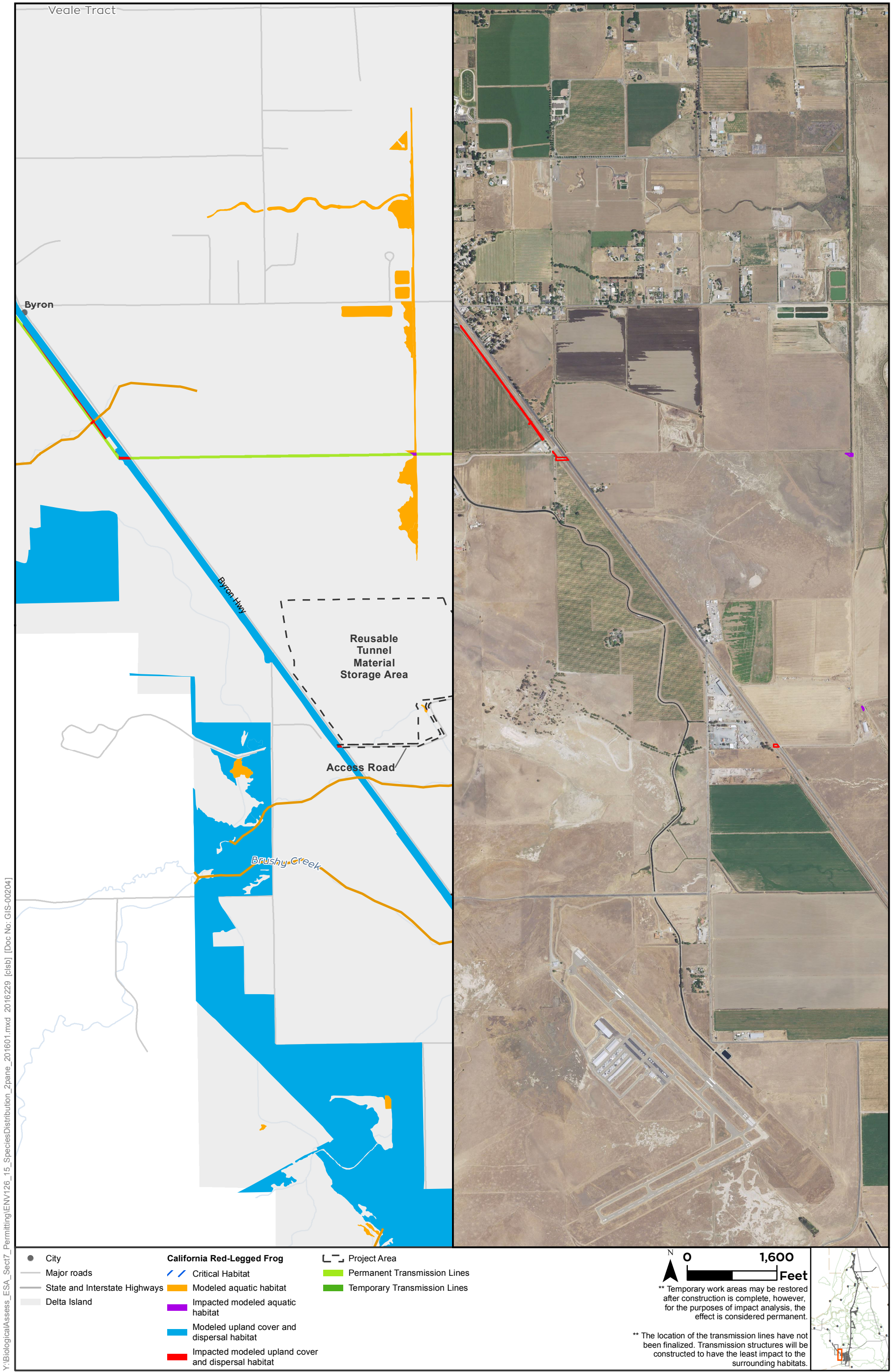
Y:\Biological\Assess_ESA_Sect7_Permitting\ENV\126_15_SpeciesDistribution_2pane_201601.mxd 2016229 [clsb] [Doc No: GIS-00204]



Sources: CCO Conveyance, CA WaterFix 2015; Species Occurrences, ICF 2013; Modeled Habitat, ICF 2013, ICF 2015; NAIP 2014



**Impacts to California Red-Legged Frog Modeled Habitat from Water Conveyance Facility Construction
Modified Pipeline Tunnel/Clifton Court Forebay Option
Clifton Court Forebay
Figure 6.7-3 of 6.7-5**



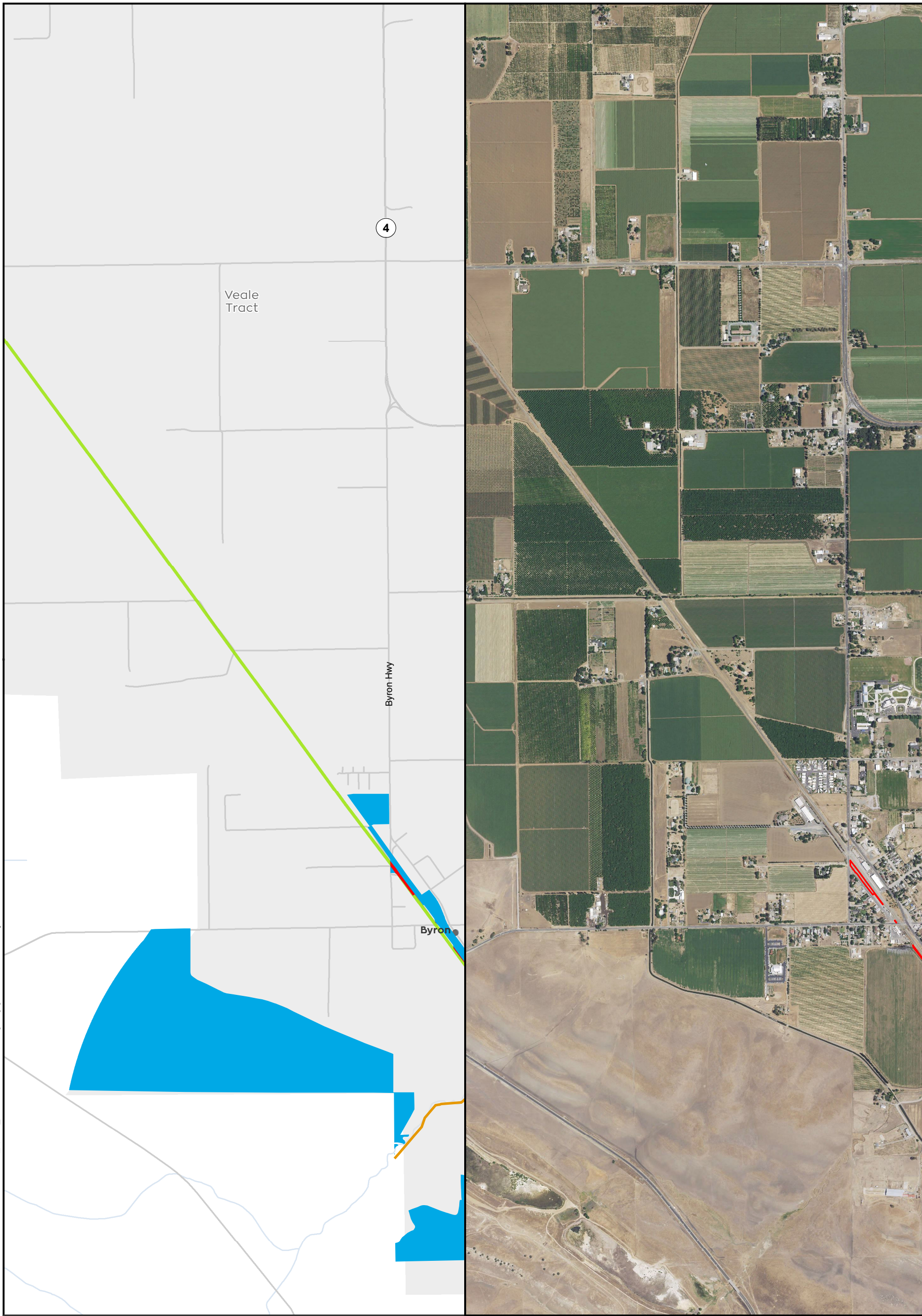
Y:\BiologicalAssess_ESA_Sect7_Permitting\EN\126_15_SpeciesDistribution_2pane_201601.mxd_2016229 [clsb] [Doc No: GIS-00204]

Sources: CCO Conveyance, CA WaterFix 2015; Species Occurrences, ICF 2013; Modeled Habitat, ICF 2013, ICF 2015; NAIP 2014



**Impacts to California Red-Legged Frog Modeled Habitat from Water Conveyance Facility Construction
Modified Pipeline Tunnel/Clifton Court Forebay Option
Transmission Line
Figure 6.7-4 of 6.7-5**

Y:\BiologicalAssess_ESA_Sect7_Permitting\EN\126_15_SpeciesDistribution_2pane_201601.mxd_2016229 [cistb] [Doc No: GIS-00204]



- City
- Major roads
- State and Interstate Highways
- Delta Island
- California Red-Legged Frog**
- /// Critical Habitat
- Modeled aquatic habitat
- Impacted modeled aquatic habitat
- Modeled upland cover and dispersal habitat
- Impacted modeled upland cover and dispersal habitat
- Project Area
- Permanent Transmission Lines
- Temporary Transmission Lines



** Temporary work areas may be restored after construction is complete, however, for the purposes of impact analysis, the effect is considered permanent.

** The location of the transmission lines have not been finalized. Transmission structures will be constructed to have the least impact to the surrounding habitats.



Sources: CCO Conveyance, CA WaterFix 2015; Species Occurrences, ICF 2013; Modeled Habitat, ICF 2013, ICF 2015; NAIP 2014



**Impacts to California Red-Legged Frog Modeled Habitat from Water Conveyance Facility Construction
Modified Pipeline Tunnel/Clifton Court Forebay Option
Transmission Line
Figure 6.7-5 of 6.7-5**