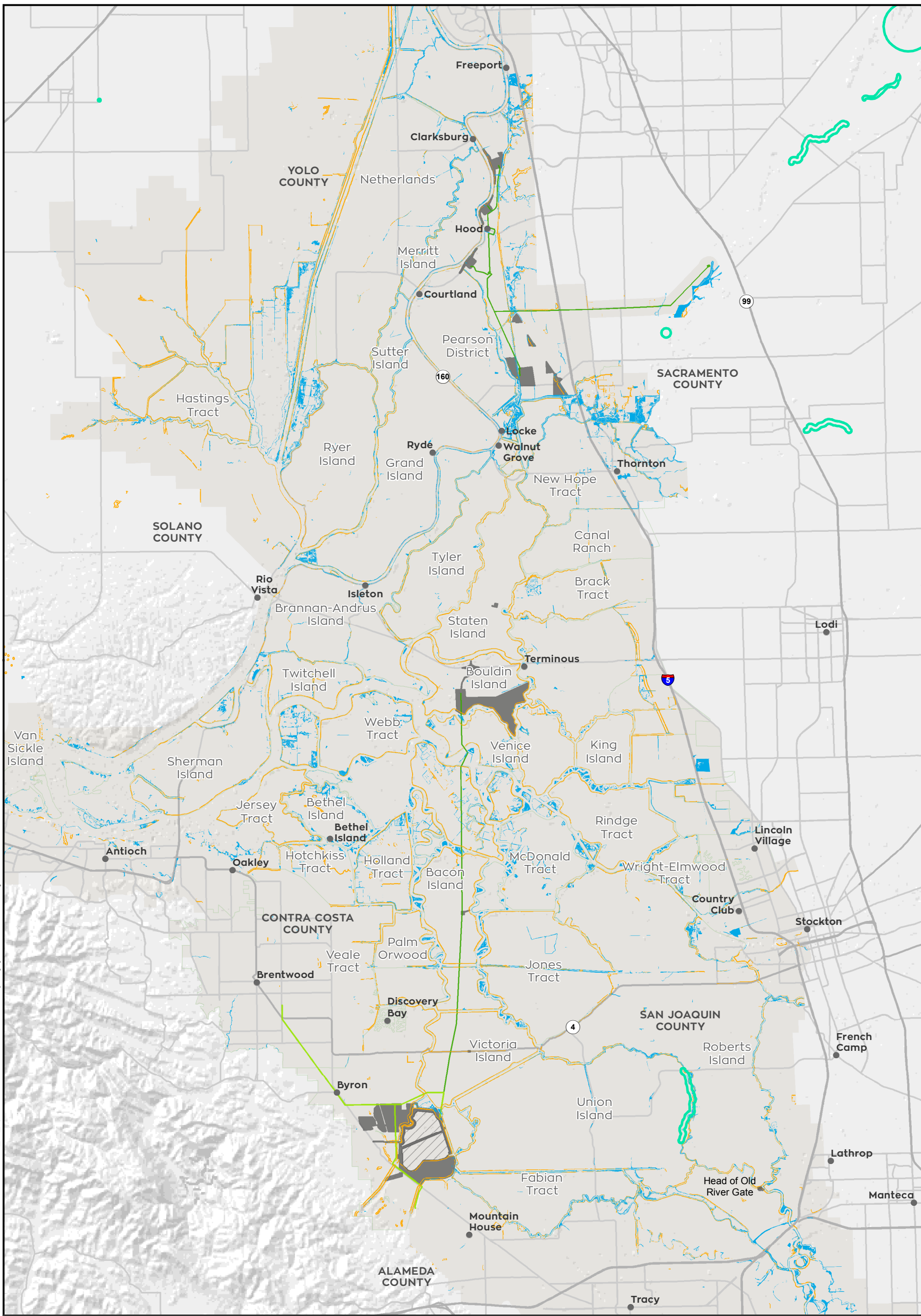


T:\WGI-38\GIS_33_00\GISRequest_11\F\Deliverable_10\EN\EN126_15\EN\EN126_15_SpeciesDistribution.mxd 20151221 [cls] [Doc No: GIS-00204]



● City	Valley Elderberry Longhorn Beetle	■ Construction Surface Impact
□ Delta Islands	■ Modeled Nonriparian Habitat	■ Permanent Transmission
Action Area	■ Modeled Riparian Habitat	■ Temporary Transmission
□ Legal Delta and Transmission Line Corridor	□ Species Occurrence	

N

0 20,000 Feet

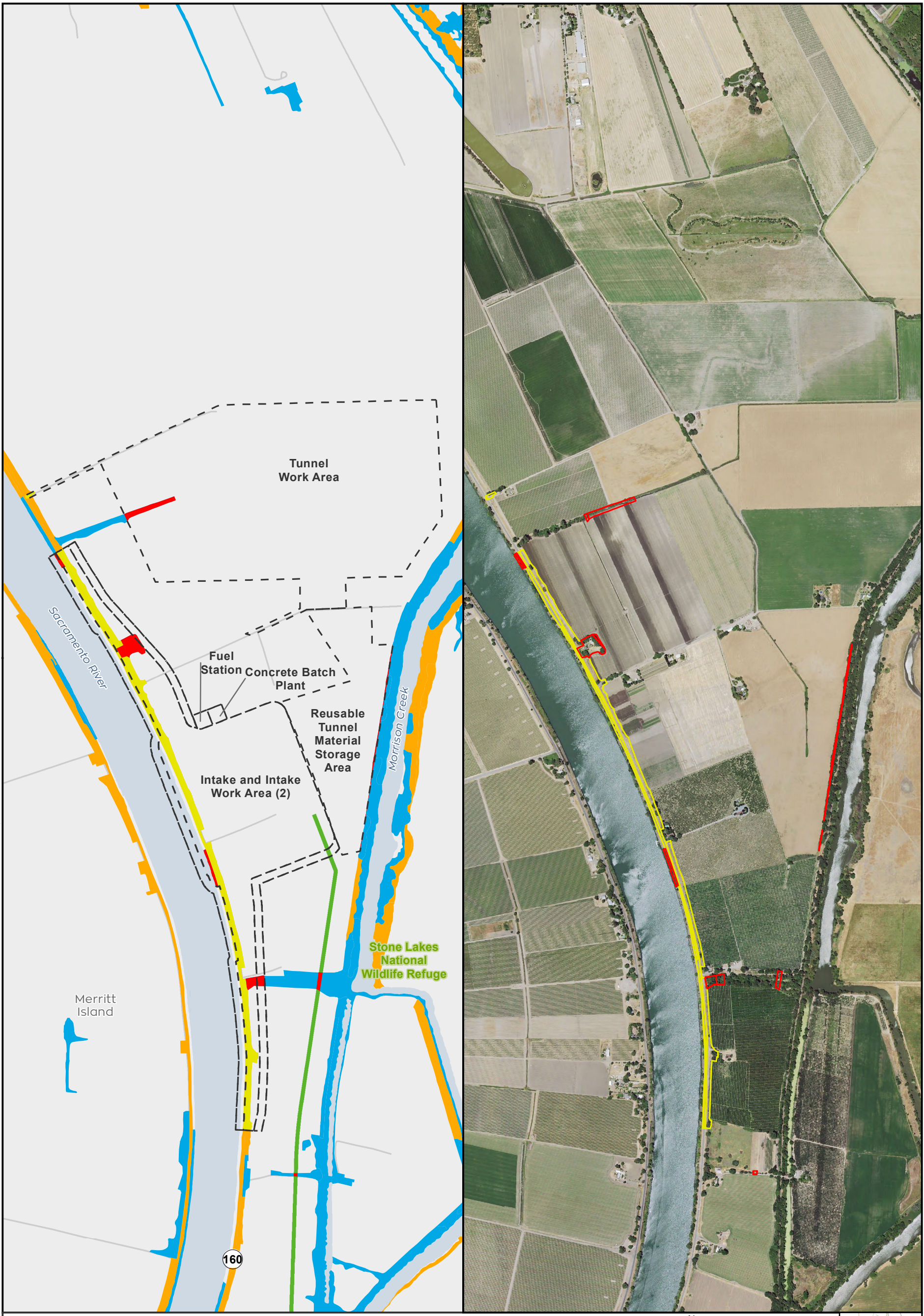
** Temporary work areas may be restored after construction is complete, however, for the purposes of impact analysis, the effect is considered permanent

Sources: CCO Conveyance, CA WaterFix 2015; Species Occurrences, ICF 2013; Modeled Habitat, ICF 2013, ICF 2015; Critical Habitat, USFWS 2012



**Impacts to Valley Elderberry Longhorn Beetle Modeled Habitat from Water Conveyance Facility Construction
Modified Pipeline Tunnel/Clifton Court Forebay Option
Figure 6.9-1 of 6.9-29**

T:\W\GIS\38\GIS_33_00\GISRequest_11\F\Deliverable_10\F\ENV\126_15\SpeciesDistribution_2pane_201509.mxd 20151111 [c:\sb] [Doc No: GIS-00204]

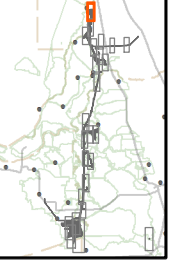


- City
- State and Interstate Highways
- Major roads
- Delta Island
- Valley Elderberry Longhorn Beetle**
- Impacted Modeled Nonriparian Habitat
- Impacted Modeled Riparian Habitat
- Modeled Nonriparian Habitat
- Modeled Riparian Habitat
- Conveyance Construction Footprint
- Permanent Transmission Lines
- Temporary Transmission Lines

N 0 1,200 Feet

** Temporary work areas may be restored after construction is complete, however, for the purposes of impact analysis, the effect is considered permanent.

** The location of the transmission lines have not been finalized. Transmission structures will be constructed to have the least impact to the surrounding habitats.



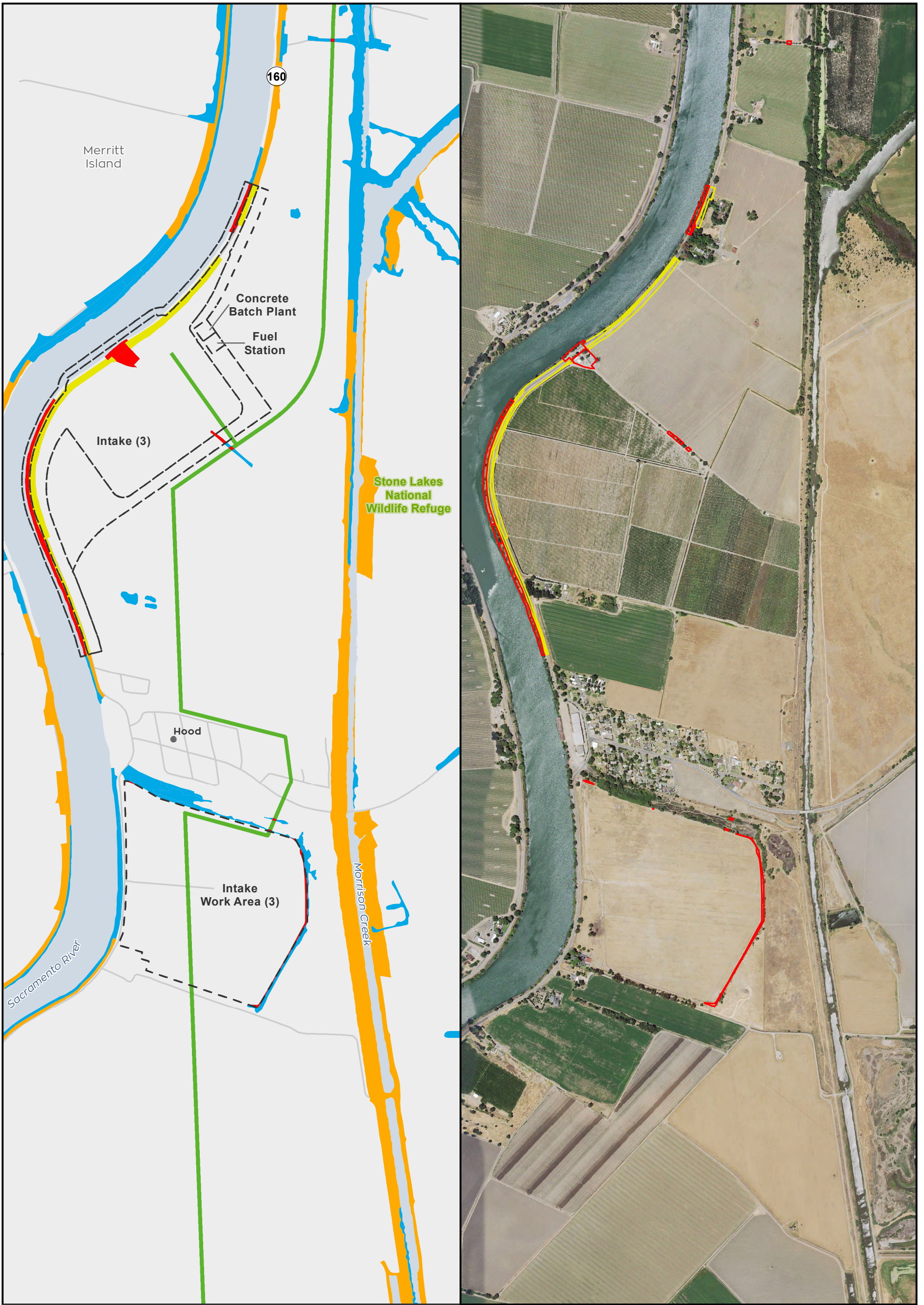
Sources: CCO Conveyance, CA WaterFix 2015; Species Occurrences, ICF 2013; Modeled Habitat, ICF 2013, ICF 2015; NAIP 2014



Impacts to Valley Elderberry Longhorn Beetle Modeled Habitat from Water Conveyance Facility Construction Modified Pipeline Tunnel/Clifton Court Forebay Option Intake 2

Figure 6.9-2 of 6.9-26

T:\WGI-38\GIS_33_00\GISRequest_11\F\Deliverable_11\F\ENV\126_15\SpeciesDistribution_2pane_201509.mxd 20151111 [c:\isb] [Doc No: GIS-00204]



● City	Valley Elderberry Longhorn Beetle	┌─┐ Conveyance Construction Footprint
— State and Interstate Highways	■ Impacted Modeled Nonriparian Habitat	— Permanent Transmission Lines
— Major roads	■ Impacted Modeled Riparian Habitat	— Temporary Transmission Lines
■ Delta Island	■ Modeled Nonriparian Habitat	
	■ Modeled Riparian Habitat	

** Temporary work areas may be restored after construction is complete, however, for the purposes of impact analysis, the effect is considered permanent.

 ** The location of the transmission lines have not been finalized. Transmission structures will be constructed to have the least impact to the surrounding habitats.

Sources: CCO Conveyance, CA WaterFix 2015; Species Occurrences, ICF 2013; Modeled Habitat, ICF 2013, ICF 2015; NAIP 2014



Impacts to Valley Elderberry Longhorn Beetle Modeled Habitat from Water Conveyance Facility Construction Modified Pipeline Tunnel/Clifton Court Forebay Option Intake 3

Figure 6.9-3 of 6.9-26

T:\WGI-38\GIS_33_00\GISRequest_11\F\Deliverable_10\F\ENV\126_15\EN\126_15_SpeciesDistribution_2pane_201509.mxd 20151111 [c:\isb] [Doc No: GIS-00204]



● City	Valley Elderberry Longhorn Beetle	┌─┐ Conveyance Construction Footprint
— State and Interstate Highways	■ Impacted Modeled Nonriparian Habitat	— Permanent Transmission Lines
— Major roads	■ Impacted Modeled Riparian Habitat	— Temporary Transmission Lines
■ Delta Island	■ Modeled Nonriparian Habitat	
	■ Modeled Riparian Habitat	

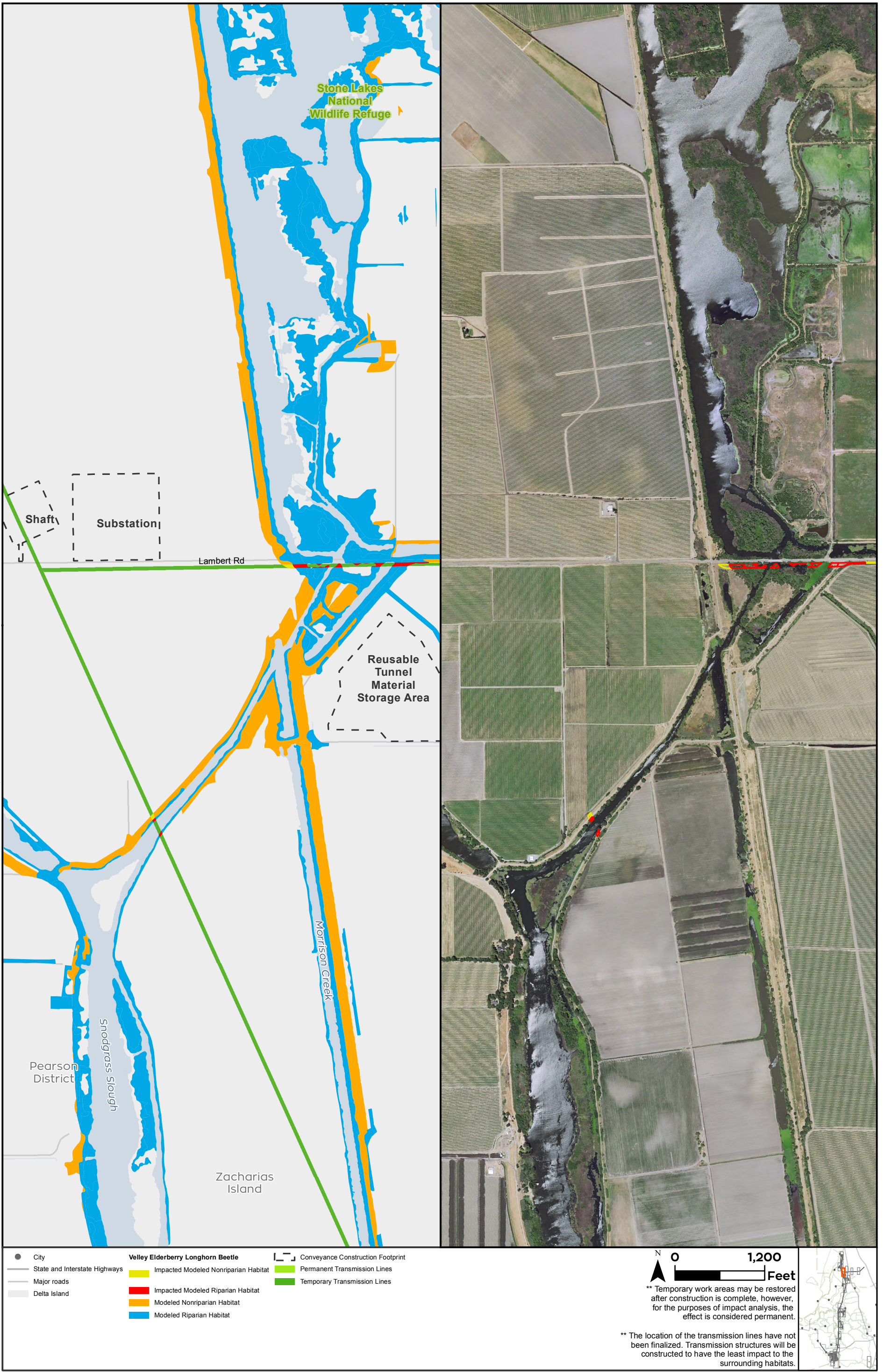
N
 0 1,200 Feet
 ** Temporary work areas may be restored after construction is complete, however, for the purposes of impact analysis, the effect is considered permanent.
 ** The location of the transmission lines have not been finalized. Transmission structures will be constructed to have the least impact to the surrounding habitats.

Sources: CCO Conveyance, CA WaterFix 2015; Species Occurrences, ICF 2013; Modeled Habitat, ICF 2013, ICF 2015; NAIP 2014



Impacts to Valley Elderberry Longhorn Beetle Modeled Habitat from Water Conveyance Facility Construction Modified Pipeline Tunnel/Clifton Court Forebay Option Intake 5
Figure 6.9-4 of 6.9-26

T:\WGI-38\GIS_33_00\GISRequest_11\F\Deliverable_11\F\EN\126_15\EN\126_15_SpeciesDistribution_2pane_201509.mxd 20151111 [c:\isb] [Doc No: GIS-00204]

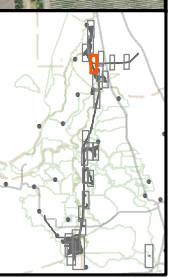


Sources: CCO Conveyance, CA WaterFix 2015; Species Occurrences, ICF 2013; Modeled Habitat, ICF 2013, ICF 2015; NAIP 2014

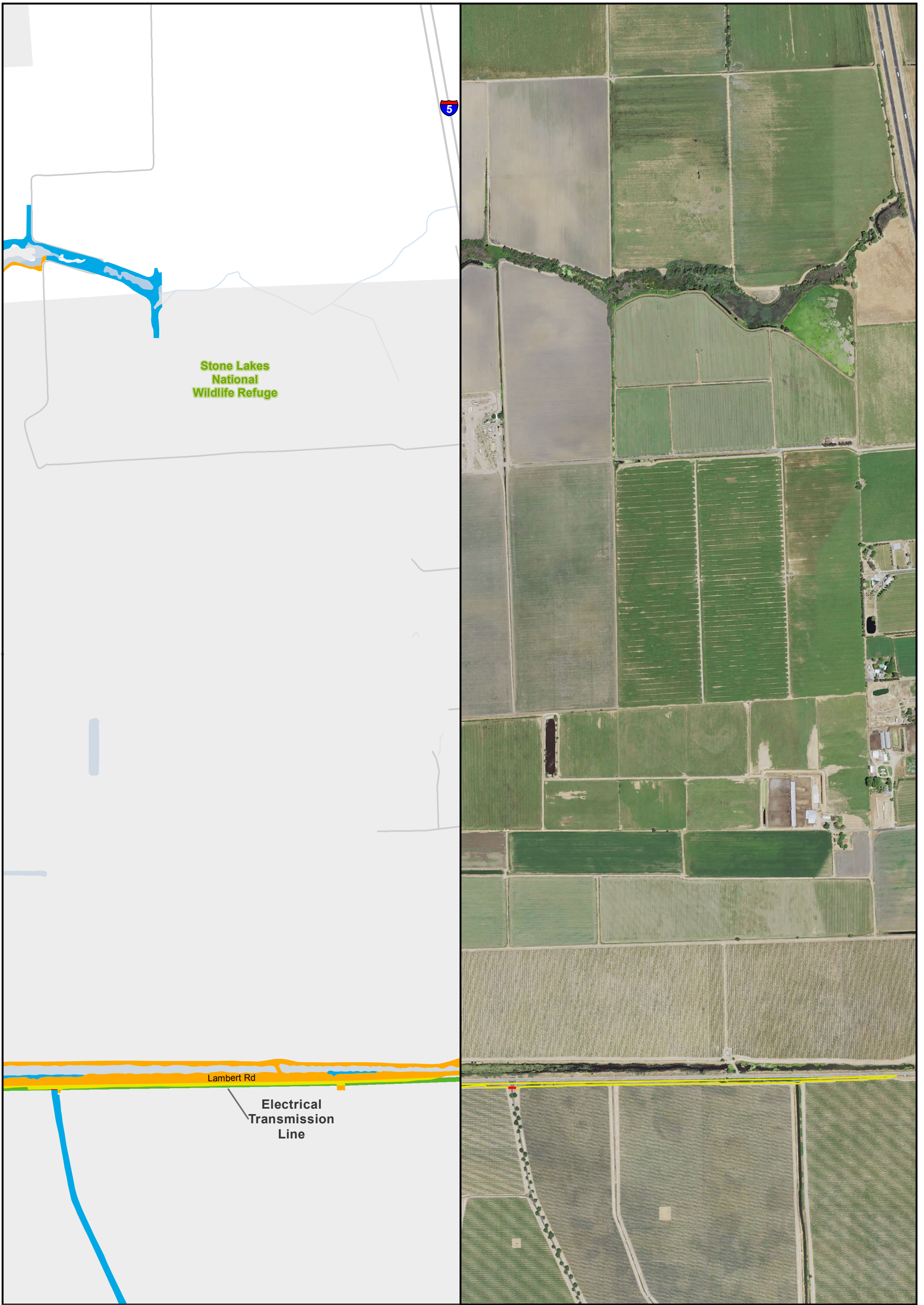


**Impacts to Valley Elderberry Longhorn Beetle Modeled Habitat from Water Conveyance Facility Construction
Modified Pipeline Tunnel/Clifton Court Forebay Option
Transmission Line - Intermediate Forebay
Figure 6.9-5 of 6.9-26**

0 1,200 Feet
 ** Temporary work areas may be restored after construction is complete, however, for the purposes of impact analysis, the effect is considered permanent.
 ** The location of the transmission lines have not been finalized. Transmission structures will be constructed to have the least impact to the surrounding habitats.



T:\WGI-38\GIS_33_00\GISRequest_11\F\Deliverable_10\EN\126_15\EN\126_15_SpeciesDistribution_2pane_201509.mxd 20151111 [c:\isb] [Doc No: GIS-00204]

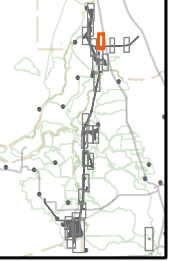


- City
 - State and Interstate Highways
 - Major roads
 - Delta Island
- | | |
|--|---|
| <p>Valley Elderberry Longhorn Beetle</p> <ul style="list-style-type: none"> ■ Impacted Modeled Nonriparian Habitat ■ Impacted Modeled Riparian Habitat ■ Modeled Nonriparian Habitat ■ Modeled Riparian Habitat | <ul style="list-style-type: none"> — Conveyance Construction Footprint ■ Permanent Transmission Lines ■ Temporary Transmission Lines |
|--|---|

N 0 1,000 Feet

** Temporary work areas may be restored after construction is complete, however, for the purposes of impact analysis, the effect is considered permanent.

** The location of the transmission lines have not been finalized. Transmission structures will be constructed to have the least impact to the surrounding habitats.



Sources: CCO Conveyance, CA WaterFix 2015; Species Occurrences, ICF 2013; Modeled Habitat, ICF 2013, ICF 2015; NAIP 2014



Impacts to Valley Elderberry Longhorn Beetle Modeled Habitat from Water Conveyance Facility Construction Modified Pipeline Tunnel/Clifton Court Forebay Option Transmission Line - East leg
Figure 6.9-6 of 6.9-26

T:\WGI-38\GIS_33_00\GISRequest_11\F\Deliverable_10\F\ENV\126_15\ENV\126_15_SpeciesDistribution_2pane_201509.mxd 20151111 [c:\isb] [Doc No: GIS-00204]

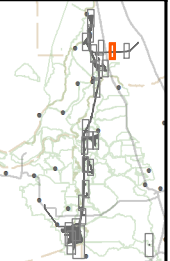


- | | | |
|---------------------------------|--|-------------------------------------|
| ● City | Valley Elderberry Longhorn Beetle | ⌊ Conveyance Construction Footprint |
| — State and Interstate Highways | ■ Impacted Modeled Nonriparian Habitat | ■ Permanent Transmission Lines |
| — Major roads | ■ Impacted Modeled Riparian Habitat | ■ Temporary Transmission Lines |
| ■ Delta Island | ■ Modeled Nonriparian Habitat | |
| | ■ Modeled Riparian Habitat | |



** Temporary work areas may be restored after construction is complete, however, for the purposes of impact analysis, the effect is considered permanent.

** The location of the transmission lines have not been finalized. Transmission structures will be constructed to have the least impact to the surrounding habitats.

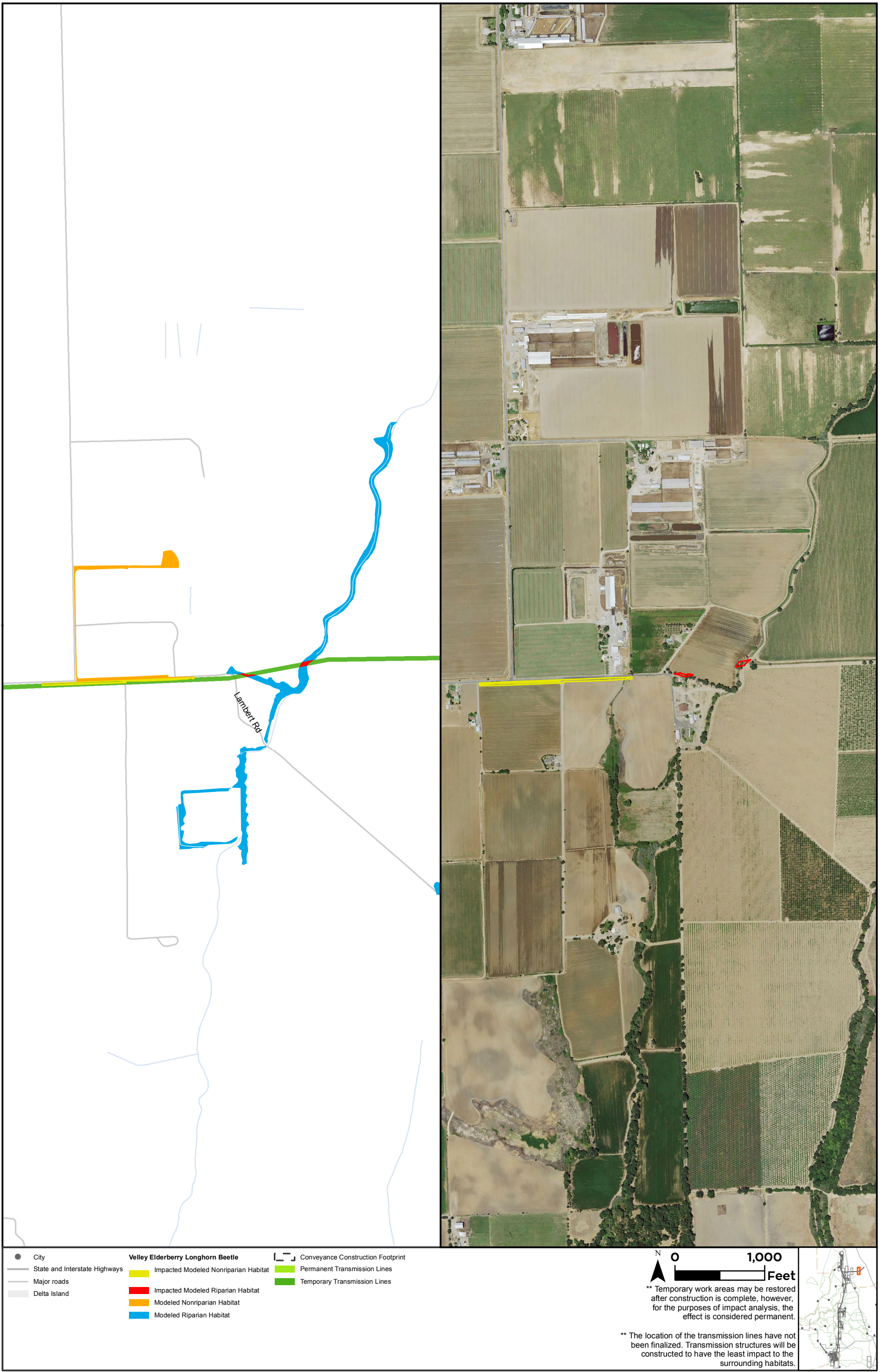


Sources: CCO Conveyance, CA WaterFix 2015; Species Occurrences, ICF 2013; Modeled Habitat, ICF 2013, ICF 2015; NAIP 2014



**Impacts to Valley Elderberry Longhorn Beetle Modeled Habitat from Water Conveyance Facility Construction
Modified Pipeline Tunnel/Clifton Court Forebay Option
Transmission Line - East leg
Figure 6.9-7 of 6.9-26**

T:\WGI-38\GIS_33_00\GISRequest_11\F\Deliverable_10\EN\126_15\EN\126_15_SpeciesDistribution_2pane_201509.mxd 20151111 [c:\isb] [Doc No: GIS-00204]



- City
 - State and Interstate Highways
 - Major roads
 - Delta Island
- Valley Elderberry Longhorn Beetle**
- Impacted Modeled Nonriparian Habitat
 - Impacted Modeled Riparian Habitat
 - Modeled Nonriparian Habitat
 - Modeled Riparian Habitat
- ▭ Conveyance Construction Footprint
 - Permanent Transmission Lines
 - Temporary Transmission Lines

N 0 1,000 Feet

** Temporary work areas may be restored after construction is complete, however, for the purposes of impact analysis, the effect is considered permanent.

** The location of the transmission lines have not been finalized. Transmission structures will be constructed to have the least impact to the surrounding habitats.

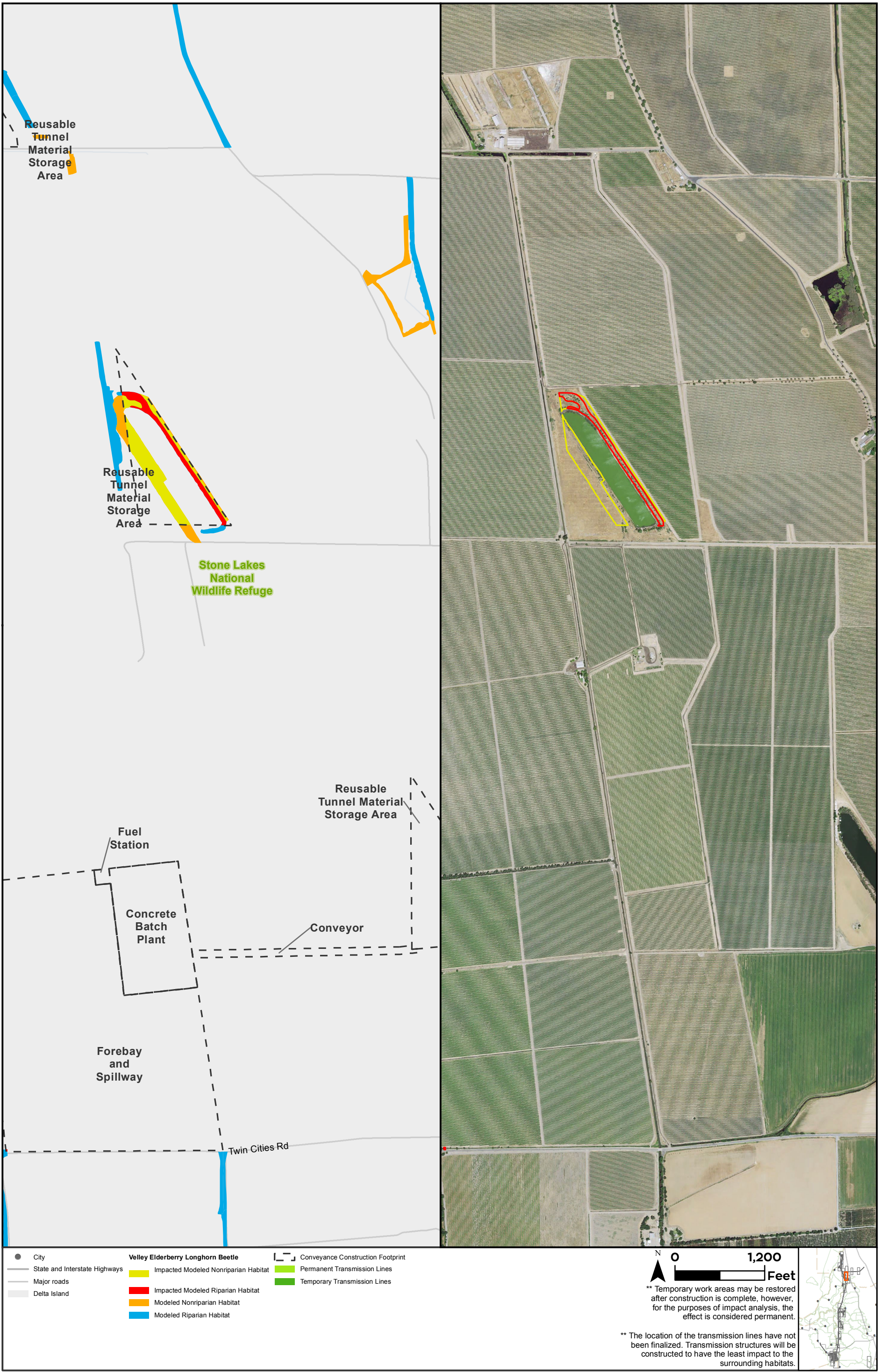


Sources: CCO Conveyance, CA WaterFix 2015; Species Occurrences, ICF 2013; Modeled Habitat, ICF 2013, ICF 2015; NAIP 2014



**Impacts to Valley Elderberry Longhorn Beetle Modeled Habitat from Water Conveyance Facility Construction
Modified Pipeline Tunnel/Clifton Court Forebay Option
Transmission Line - East leg
Figure 6.9-8 of 6.9-26**

T:\WGI-38\GIS_33_00\GISRequest_11\F\Deliverable_11\F\ENNV126_15\ENNV126_15_SpeciesDistribution_2pane_20151111 [ciss] [Doc No: GIS-00204]

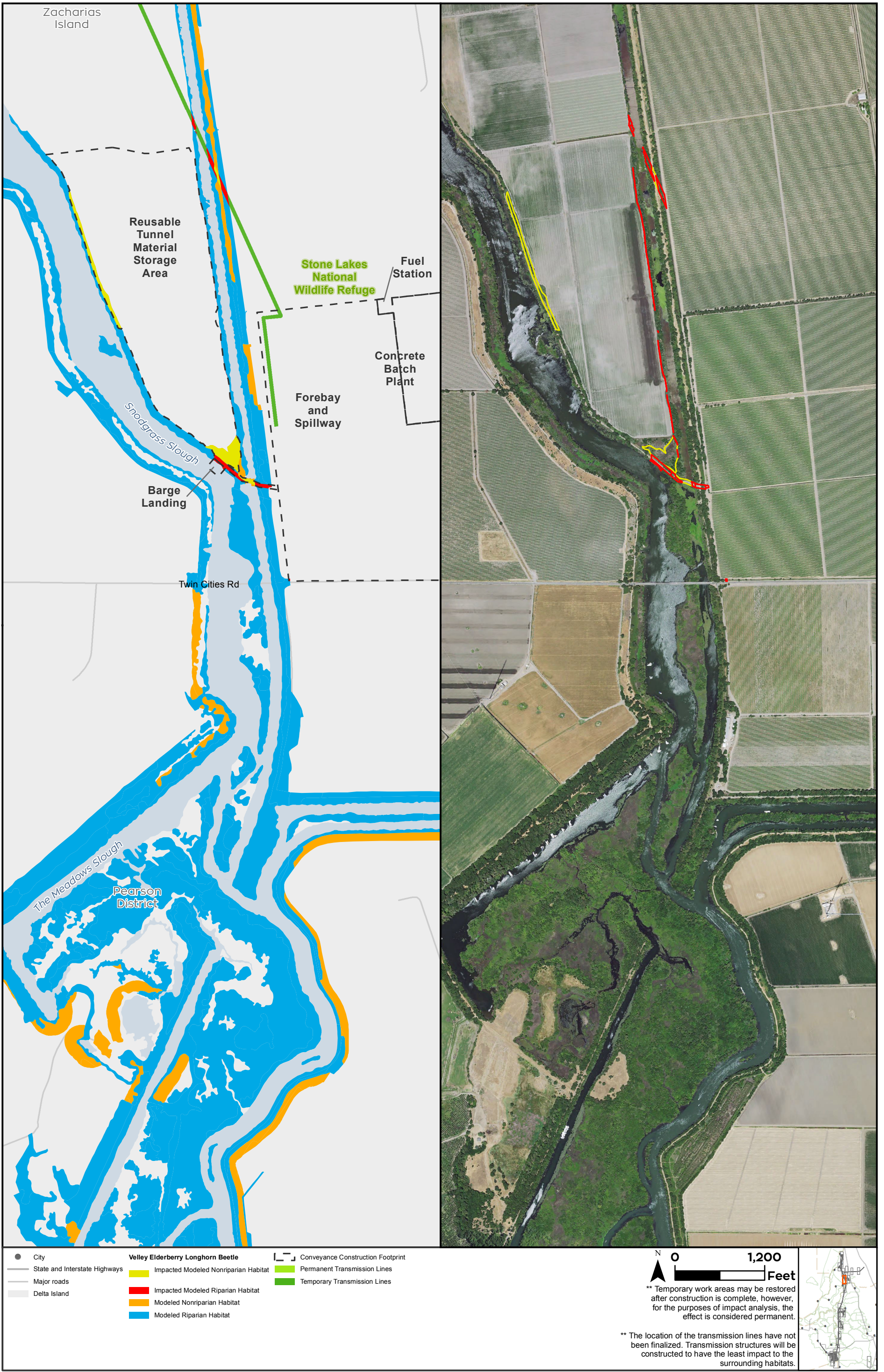


Sources: CCO Conveyance, CA WaterFix 2015; Species Occurrences, ICF 2013; Modeled Habitat, ICF 2013, ICF 2015; NAIP 2014



**Impacts to Valley Elderberry Longhorn Beetle Modeled Habitat from Water Conveyance Facility Construction
Modified Pipeline Tunnel/Clifton Court Forebay Option
Reusable Tunnel Material at Intermediate Forebay
Figure 6.9-9 of 6.9-26**

T:\WGI-38\GIS_33_00\GISRequest_11\F\Deliverable_11\F\EN\126_15\EN\126_15_SpeciesDistribution_2pane_201509.mxd 20151111 [sib] [Doc No: GIS-00204]



- City
 - State and Interstate Highways
 - Major roads
 - Delta Island
- Valley Elderberry Longhorn Beetle**
- Impacted Modeled Nonriparian Habitat
 - Impacted Modeled Riparian Habitat
 - Modeled Nonriparian Habitat
 - Modeled Riparian Habitat
- Conveyance Construction Footprint
 - Permanent Transmission Lines
 - Temporary Transmission Lines

N 0 1,200 Feet

** Temporary work areas may be restored after construction is complete, however, for the purposes of impact analysis, the effect is considered permanent.

** The location of the transmission lines have not been finalized. Transmission structures will be constructed to have the least impact to the surrounding habitats.

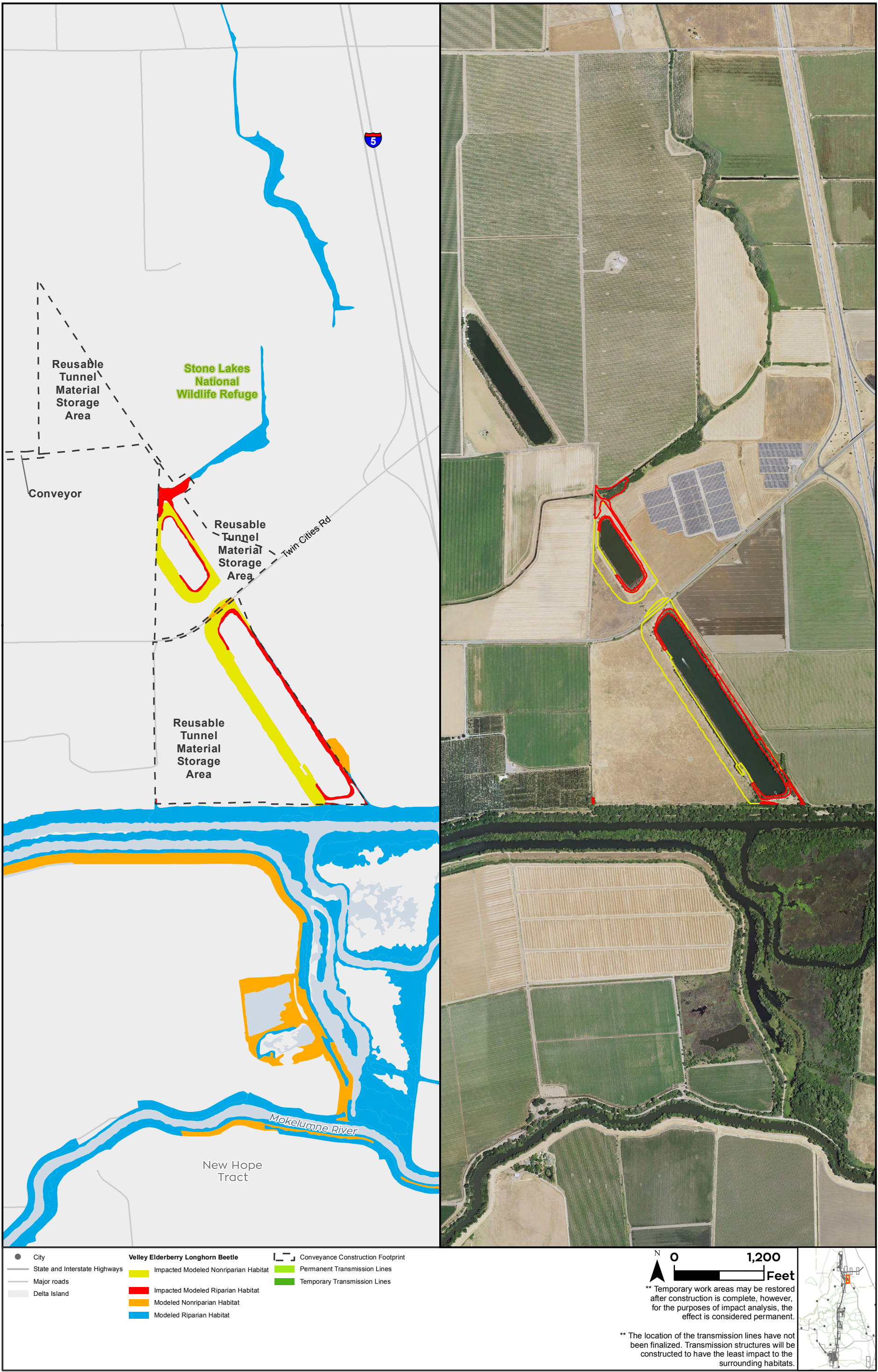


Sources: CCO Conveyance, CA WaterFix 2015; Species Occurrences, ICF 2013; Modeled Habitat, ICF 2013, ICF 2015; NAIP 2014



Impacts to Valley Elderberry Longhorn Beetle Modeled Habitat from Water Conveyance Facility Construction Modified Pipeline Tunnel/Clifton Court Forebay Option Transmission Line - Intermediate Forebay Figure 6.9-10 of 6.9-26

T:\WGI-38\GIS_33_00\GISRequest_11\F\Deliverable_11\F\EN\126_15_SpeciesDistribution_2pane_201509.mxd 20151111 [c:\sb] [Doc No: GIS-00204]

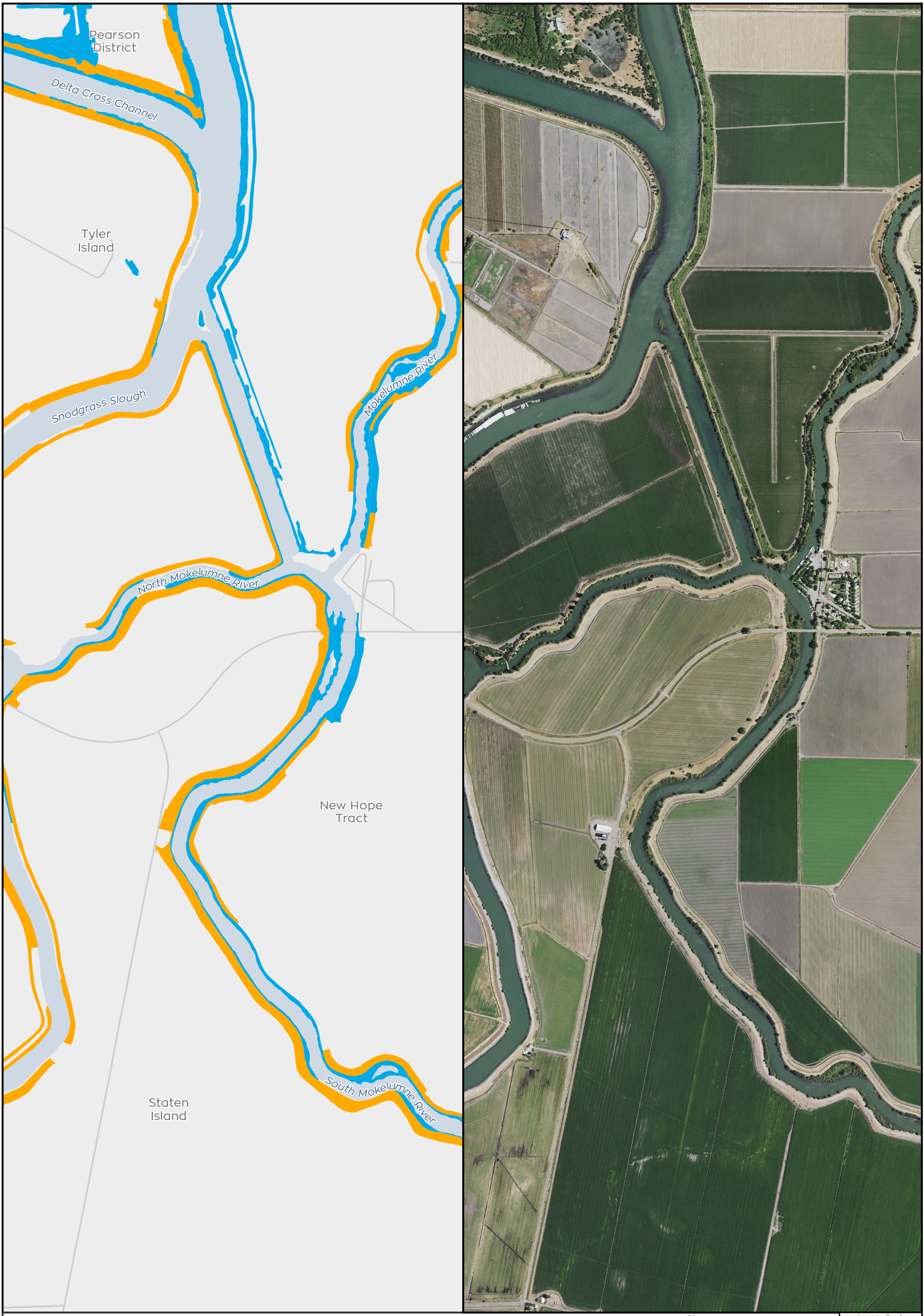


Sources: CCO Conveyance, CA WaterFix 2015; Species Occurrences, ICF 2013; Modeled Habitat, ICF 2013, ICF 2015; NAIP 2014



Impacts to Valley Elderberry Longhorn Beetle Modeled Habitat from Water Conveyance Facility Construction
Modified Pipeline Tunnel/Clifton Court Forebay Option
Reusable Tunnel Material at Intermediate Forebay
Figure 6.9-11 of 6.9-26

T:\WGI-38\GIS_33_00\GISRequest_11\F\Deliverable_11\F\EN\126_15\EN\126_15_SpeciesDistribution_2pane_201509.mxd 20151111 [c:\isb] [Doc No: GIS-00204]



- City
 - State and Interstate Highways
 - Major roads
 - Delta Island
- Valley Elderberry Longhorn Beetle**
- Impacted Modeled Nonriparian Habitat
 - Impacted Modeled Riparian Habitat
 - Modeled Nonriparian Habitat
 - Modeled Riparian Habitat
- ▭ Conveyance Construction Footprint
 - Permanent Transmission Lines
 - Temporary Transmission Lines

0 1,200 Feet

** Temporary work areas may be restored after construction is complete, however, for the purposes of impact analysis, the effect is considered permanent.

** The location of the transmission lines have not been finalized. Transmission structures will be constructed to have the least impact to the surrounding habitats.



Sources: CCO Conveyance, CA WaterFix 2015; Species Occurrences, ICF 2013; Modeled Habitat, ICF 2013, ICF 2015; NAIP 2014



Impacts to Valley Elderberry Longhorn Beetle Modeled Habitat from Water Conveyance Facility Construction Modified Pipeline Tunnel/Clifton Court Forebay Option Tunnel Work Area

Figure 6.9-12 of 6.9-26

T:\WGI-38\GIS_33_00\GISRequest_11\F\Deliverable_10\EN\126_15\EN\126_15_SpeciesDistribution_2pane_201509.mxd 20151111 [c:\isb] [Doc No: GIS-00204]

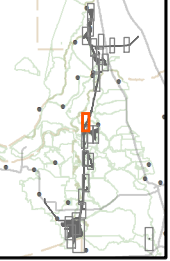


- City
- State and Interstate Highways
- Major roads
- Delta Island
- Valley Elderberry Longhorn Beetle**
- Impacted Modeled Nonriparian Habitat
- Impacted Modeled Riparian Habitat
- Modeled Nonriparian Habitat
- Modeled Riparian Habitat
- Conveyance Construction Footprint
- Permanent Transmission Lines
- Temporary Transmission Lines

N 0 1,200 Feet

** Temporary work areas may be restored after construction is complete, however, for the purposes of impact analysis, the effect is considered permanent.

** The location of the transmission lines have not been finalized. Transmission structures will be constructed to have the least impact to the surrounding habitats.

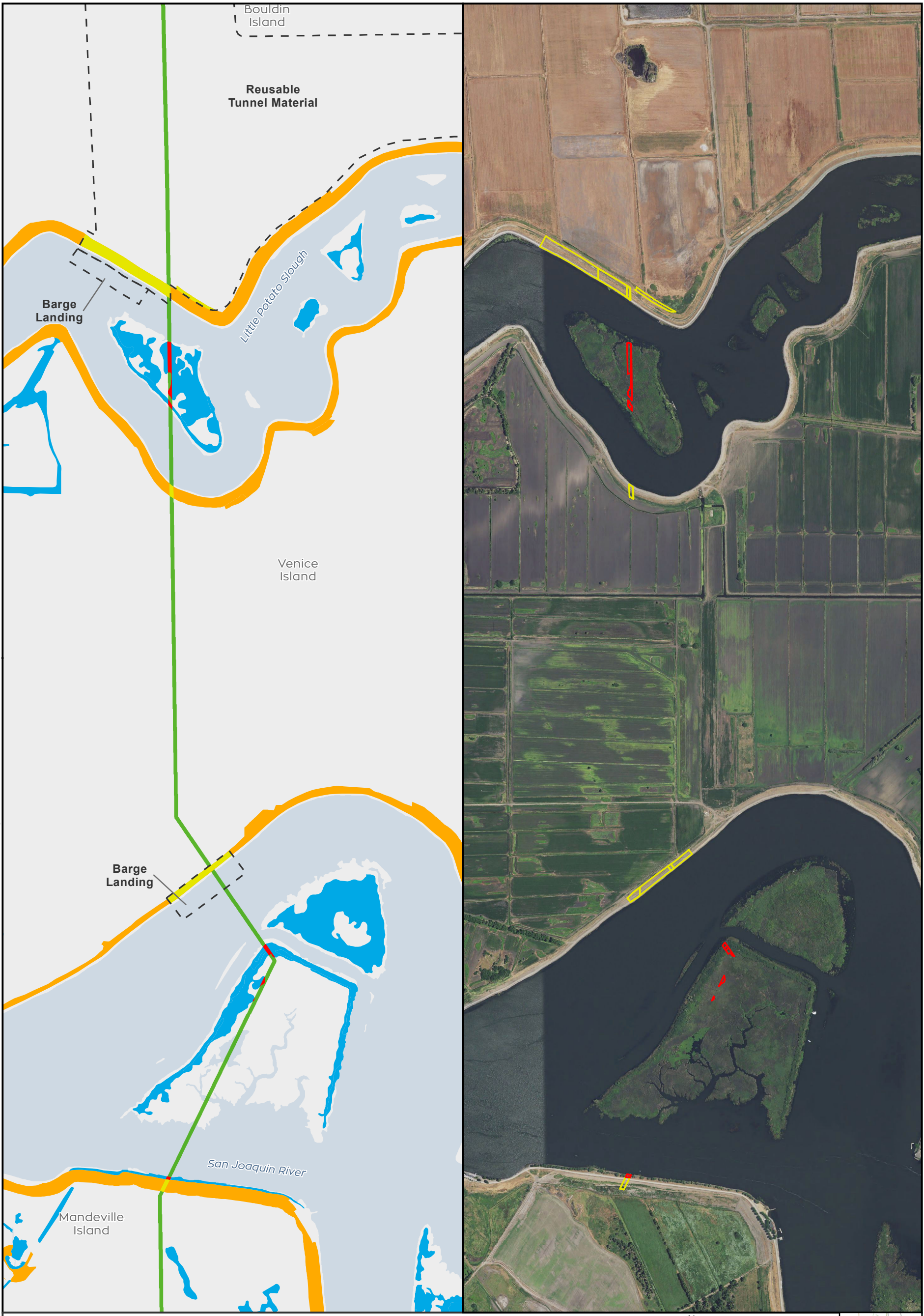


Sources: CCO Conveyance, CA WaterFix 2015; Species Occurrences, ICF 2013; Modeled Habitat, ICF 2013, ICF 2015; NAIP 2014



Impacts to Valley Elderberry Longhorn Beetle Modeled Habitat from Water Conveyance Facility Construction Modified Pipeline Tunnel/Clifton Court Forebay Option Road Interchange & Shaft
Figure 6.9-13 of 6.9-26

T:\WGI-38\GIS_33_00\GISRequest_11\F\Deliverable_10\EN\126_15\EN\126_15_SpeciesDistribution_2pane_201509.mxd 20151111 [c:\isb] [Doc No: GIS-00204]



- City
 - State and Interstate Highways
 - Major roads
 - Delta Island
- Valley Elderberry Longhorn Beetle**
- Impacted Modeled Nonriparian Habitat
 - Impacted Modeled Riparian Habitat
 - Modeled Nonriparian Habitat
 - Modeled Riparian Habitat
- Conveyance Construction Footprint
 - Permanent Transmission Lines
 - Temporary Transmission Lines

0 1,200 Feet

** Temporary work areas may be restored after construction is complete, however, for the purposes of impact analysis, the effect is considered permanent.

** The location of the transmission lines have not been finalized. Transmission structures will be constructed to have the least impact to the surrounding habitats.

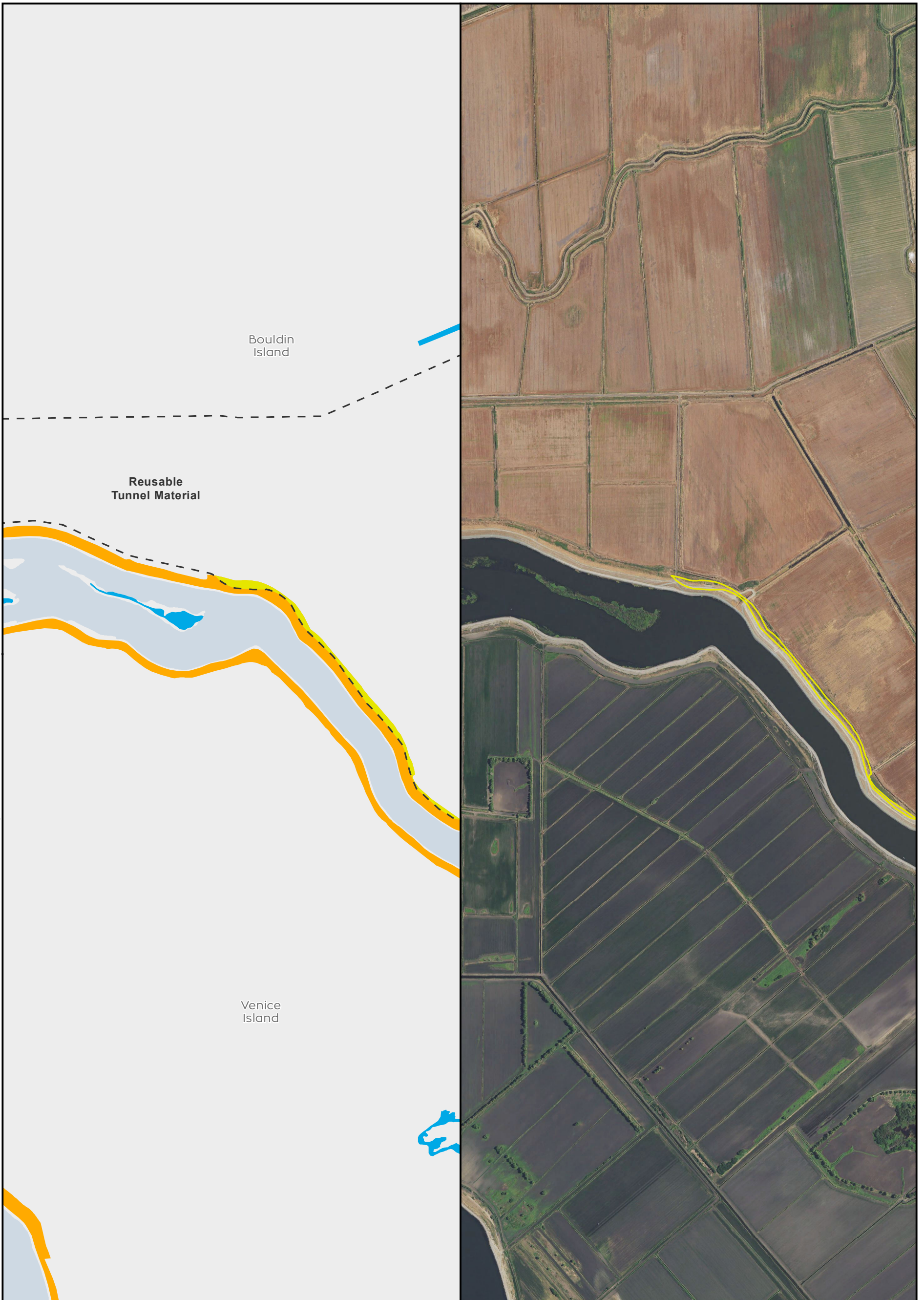


Sources: CCO Conveyance, CA WaterFix 2015; Species Occurrences, ICF 2013; Modeled Habitat, ICF 2013, ICF 2015; NAIP 2014

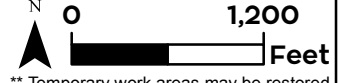


Impacts to Valley Elderberry Longhorn Beetle Modeled Habitat from Water Conveyance Facility Construction Modified Pipeline Tunnel/Clifton Court Forebay Option Reusable Tunnel Material & Transmission Line
Figure 6.9-14 of 6.9-26

T:\WGI-38\GIS_33_00\GISRequest_11\F\Deliverable_10\F\ENV\126_15\ENV\126_15_SpeciesDistribution_2pane_201509.mxd 20151111 [c:\sb] [Doc No: GIS-00204]



- City
 - State and Interstate Highways
 - Major roads
 - Delta Island
- | | |
|--|---|
| <p>Valley Elderberry Longhorn Beetle</p> <ul style="list-style-type: none"> ■ Impacted Modeled Nonriparian Habitat ■ Impacted Modeled Riparian Habitat ■ Modeled Nonriparian Habitat ■ Modeled Riparian Habitat | <p>— Conveyance Construction Footprint</p> <ul style="list-style-type: none"> ■ Permanent Transmission Lines ■ Temporary Transmission Lines |
|--|---|



** Temporary work areas may be restored after construction is complete, however, for the purposes of impact analysis, the effect is considered permanent.

** The location of the transmission lines have not been finalized. Transmission structures will be constructed to have the least impact to the surrounding habitats.

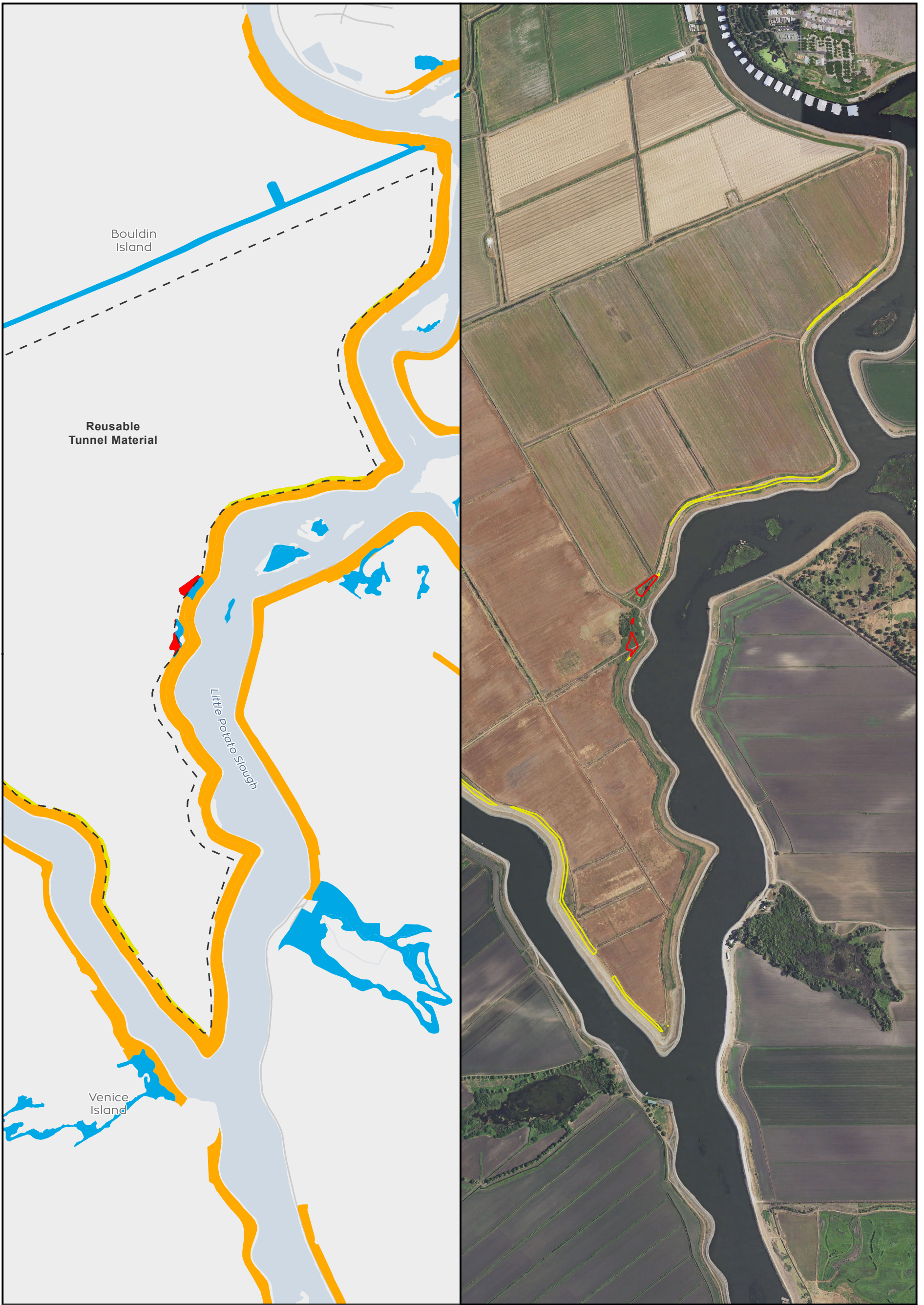


Sources: CCO Conveyance, CA WaterFix 2015; Species Occurrences, ICF 2013; Modeled Habitat, ICF 2013, ICF 2015; NAIP 2014



**Impacts to Valley Elderberry Longhorn Beetle Modeled Habitat from Water Conveyance Facility Construction
Modified Pipeline Tunnel/Clifton Court Forebay Option
Reusable Tunnel Material
Figure 6.9-15 of 6.9-26**

T:\WGI-38\GIS_33_00\GISRequest_11\F\Deliverable_11\F\EN\126_15\EN\126_15_SpeciesDistribution_2pane_201509.mxd 20151111 [c:\isb] [Doc No: GIS-00204]

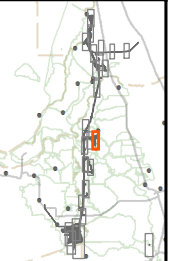


- City
 - State and Interstate Highways
 - Major roads
 - Delta Island
- | | |
|--|---|
| <p>Valley Elderberry Longhorn Beetle</p> <ul style="list-style-type: none"> ■ Impacted Modeled Nonriparian Habitat ■ Impacted Modeled Riparian Habitat ■ Modeled Nonriparian Habitat ■ Modeled Riparian Habitat | <ul style="list-style-type: none"> — Conveyance Construction Footprint ■ Permanent Transmission Lines ■ Temporary Transmission Lines |
|--|---|



** Temporary work areas may be restored after construction is complete, however, for the purposes of impact analysis, the effect is considered permanent.

** The location of the transmission lines have not been finalized. Transmission structures will be constructed to have the least impact to the surrounding habitats.

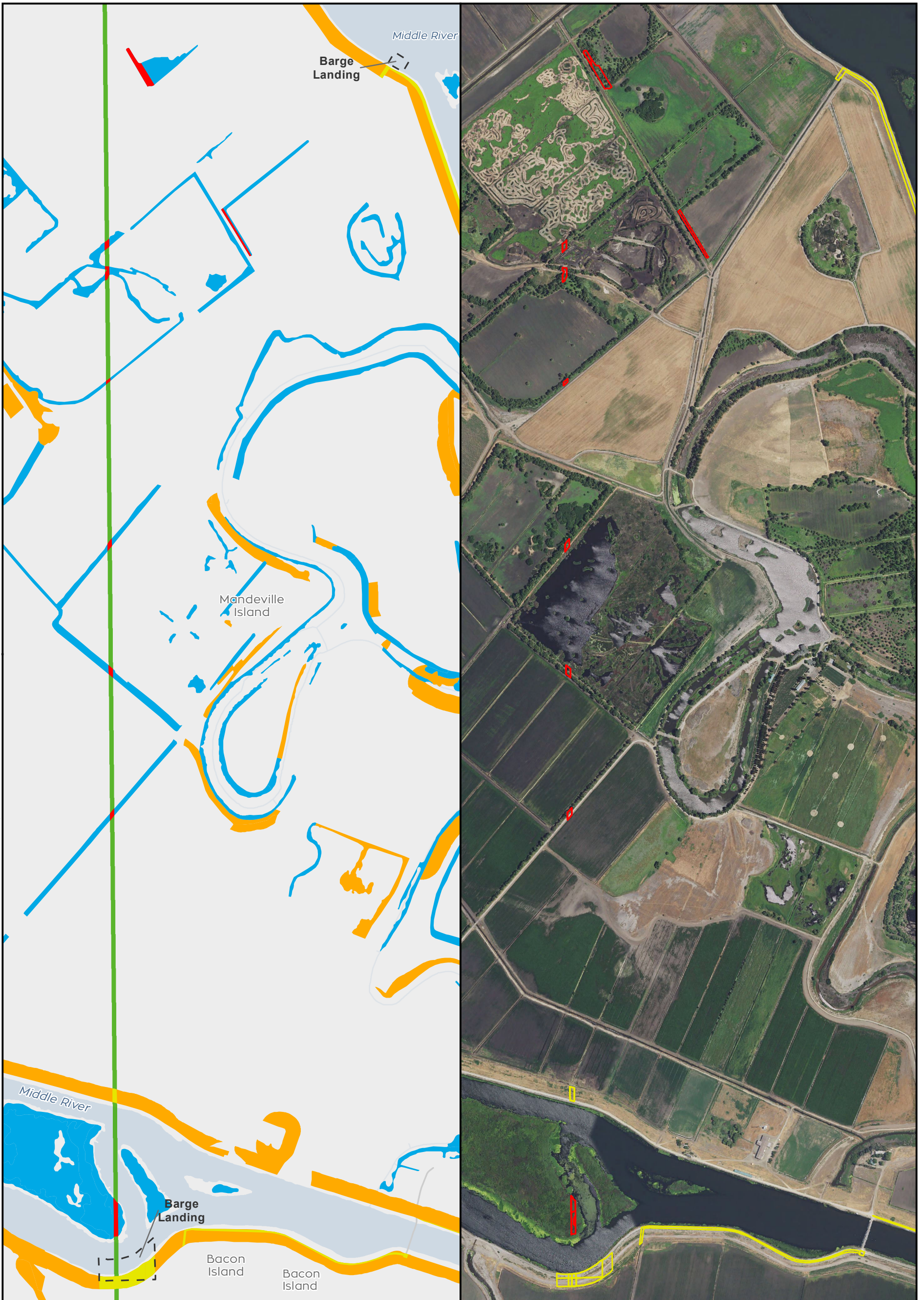


Sources: CCO Conveyance, CA WaterFix 2015; Species Occurrences, ICF 2013; Modeled Habitat, ICF 2013, ICF 2015; NAIP 2014



**Impacts to Valley Elderberry Longhorn Beetle Modeled Habitat from Water Conveyance Facility Construction
Modified Pipeline Tunnel/Clifton Court Forebay Option
Reusable Tunnel Material
Figure 6.9-16 of 6.9-26**

T:\WGI-38\GIS_33_00\GISRequest_11\F\Deliverable_10\F\ENV\126_15_15\SpeciesDistribution_2pane_201509.mxd 20151111 [c:\sb] [Doc No: GIS-00204]

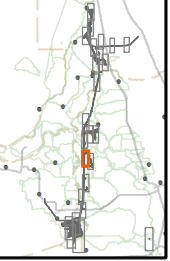


- City
 - State and Interstate Highways
 - Major roads
 - Delta Island
- Valley Elderberry Longhorn Beetle**
- Impacted Modeled Nonriparian Habitat
 - Impacted Modeled Riparian Habitat
 - Modeled Nonriparian Habitat
 - Modeled Riparian Habitat
- Conveyance Construction Footprint
 - Permanent Transmission Lines
 - Temporary Transmission Lines

N 0 1,100 Feet

** Temporary work areas may be restored after construction is complete, however, for the purposes of impact analysis, the effect is considered permanent.

** The location of the transmission lines have not been finalized. Transmission structures will be constructed to have the least impact to the surrounding habitats.



Sources: CCO Conveyance, CA WaterFix 2015; Species Occurrences, ICF 2013; Modeled Habitat, ICF 2013, ICF 2015; NAIP 2014



Impacts to Valley Elderberry Longhorn Beetle Modeled Habitat from Water Conveyance Facility Construction Modified Pipeline Tunnel/Clifton Court Forebay Option Tunnel Work Area & Transmission Line
Figure 6.9-17 of 6.9-26

T:\WG\38\GIS_33_00\GISRequest_11\F\Deliverable_10\F\ENV\126_15\EN\126_15_SpeciesDistribution_2pane_201509.mxd_20151111 [c:\sb] [Doc No: GIS-00204]



- City
 - State and Interstate Highways
 - Major roads
 - Delta Island
- Valley Elderberry Longhorn Beetle**
- Impacted Modeled Nonriparian Habitat
 - Impacted Modeled Riparian Habitat
 - Modeled Nonriparian Habitat
 - Modeled Riparian Habitat
- Conveyance Construction Footprint
- Permanent Transmission Lines
 - Temporary Transmission Lines

N 0 1,100 Feet

** Temporary work areas may be restored after construction is complete, however, for the purposes of impact analysis, the effect is considered permanent.

** The location of the transmission lines have not been finalized. Transmission structures will be constructed to have the least impact to the surrounding habitats.



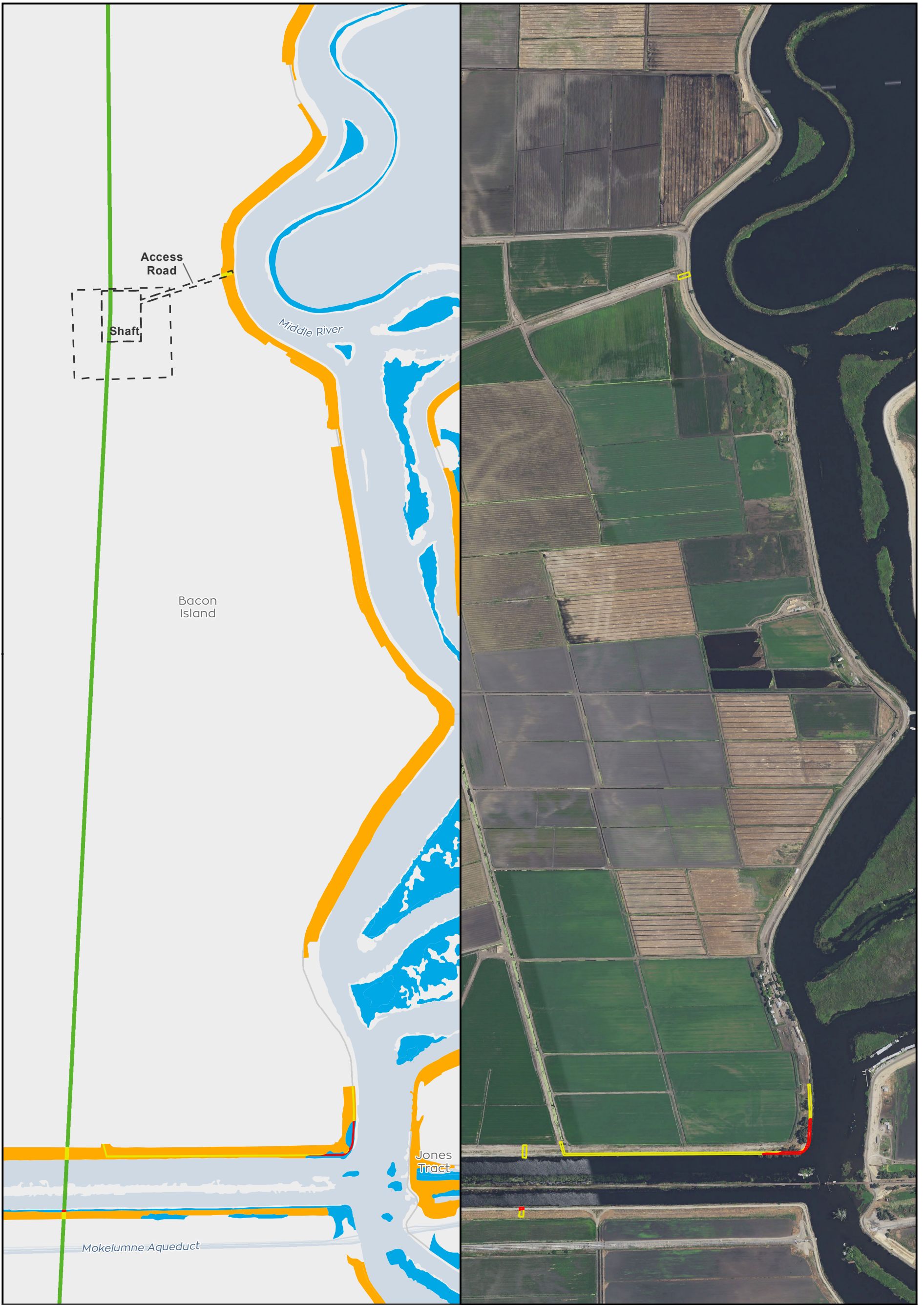
Sources: CCO Conveyance, CA WaterFix 2015; Species Occurrences, ICF 2013; Modeled Habitat, ICF 2013, ICF 2015; NAIP 2014



**Impacts to Valley Elderberry Longhorn Beetle Modeled Habitat from Water Conveyance Facility Construction
Modified Pipeline Tunnel/Clifton Court Forebay Option
Tunnel Work Area**

Figure 6.9-18 of 6.9-26

T:\WGI-38\GIS_33_00\GISRequest_11\F\Deliverable_10\EN\EN126_15_SpeciesDistribution_2pane_201509.mxd 20151111 [c:\isb] [Doc No: GIS-00204]

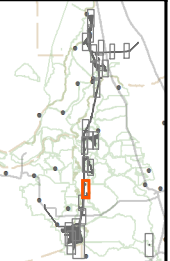


- City
 - State and Interstate Highways
 - Major roads
 - Delta Island
- Valley Elderberry Longhorn Beetle**
- Impacted Modeled Nonriparian Habitat
 - Impacted Modeled Riparian Habitat
 - Modeled Nonriparian Habitat
 - Modeled Riparian Habitat
- Conveyance Construction Footprint
 - Permanent Transmission Lines
 - Temporary Transmission Lines



** Temporary work areas may be restored after construction is complete, however, for the purposes of impact analysis, the effect is considered permanent.

** The location of the transmission lines have not been finalized. Transmission structures will be constructed to have the least impact to the surrounding habitats.

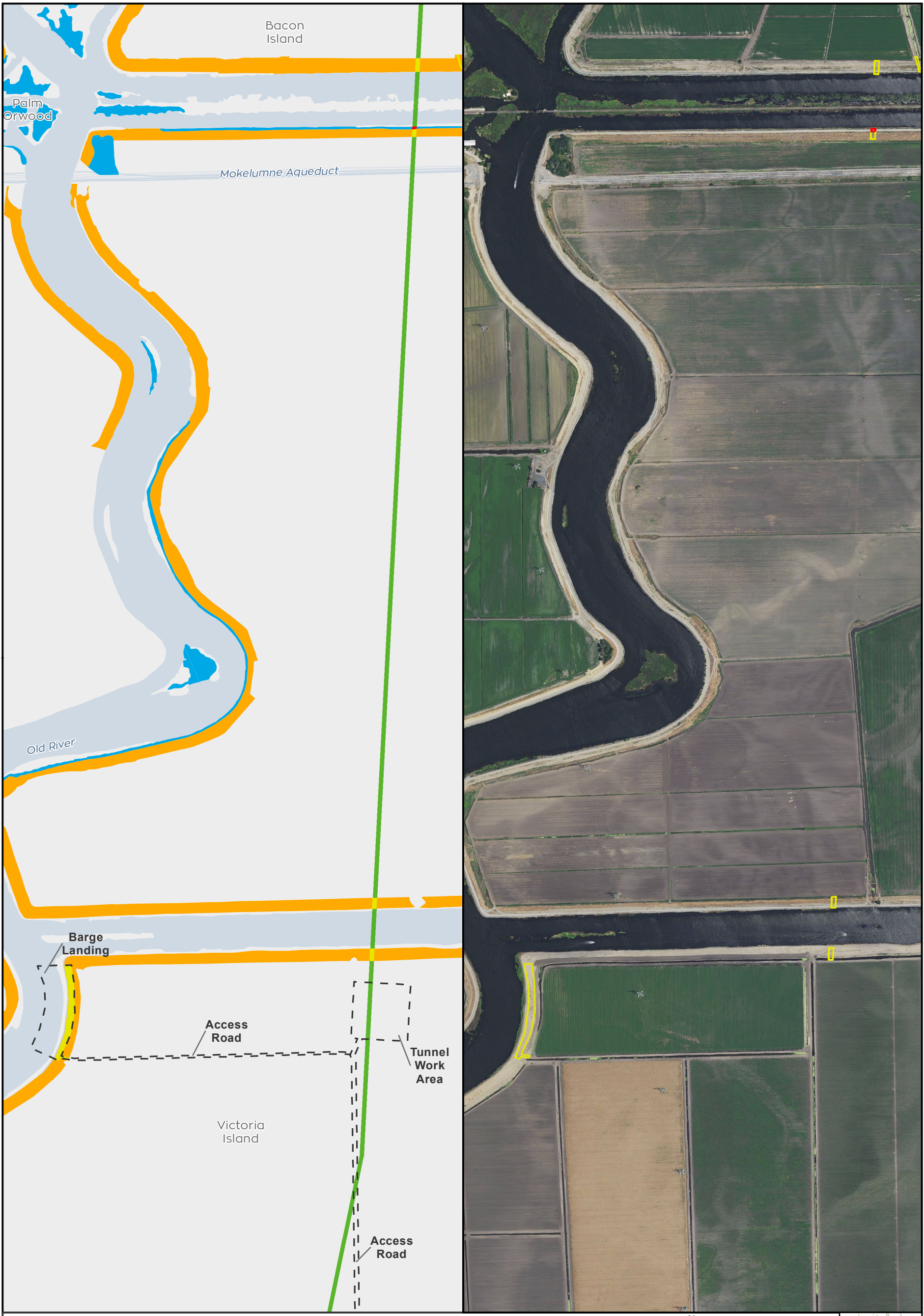


Sources: CCO Conveyance, CA WaterFix 2015; Species Occurrences, ICF 2013; Modeled Habitat, ICF 2013, ICF 2015; NAIP 2014



Impacts to Valley Elderberry Longhorn Beetle Modeled Habitat from Water Conveyance Facility Construction Modified Pipeline Tunnel/Clifton Court Forebay Option Shaft & Tunnel Work Area Figure 6.9-19 of 6.9-26

T:\WGI-38\GIS_33_00\GISRequest_11\F\Deliverable_11\F\EN\126_15\EN\126_15_SpeciesDistribution_2pane_201509.mxd 20151111 [c:\isb] [Doc No: GIS-00204]



<ul style="list-style-type: none"> ● City — State and Interstate Highways — Major roads — Delta Island 	<p>Valley Elderberry Longhorn Beetle</p> <ul style="list-style-type: none"> ■ Impacted Modeled Nonriparian Habitat ■ Impacted Modeled Riparian Habitat ■ Modeled Nonriparian Habitat ■ Modeled Riparian Habitat 	<ul style="list-style-type: none"> — Conveyance Construction Footprint — Permanent Transmission Lines — Temporary Transmission Lines
--	--	---

N
 0 1,100 Feet
 ** Temporary work areas may be restored after construction is complete, however, for the purposes of impact analysis, the effect is considered permanent.
 ** The location of the transmission lines have not been finalized. Transmission structures will be constructed to have the least impact to the surrounding habitats.

Sources: CCO Conveyance, CA WaterFix 2015; Species Occurrences, ICF 2013; Modeled Habitat, ICF 2013, ICF 2015; NAIP 2014



Impacts to Valley Elderberry Longhorn Beetle Modeled Habitat from Water Conveyance Facility Construction Modified Pipeline Tunnel/Clifton Court Forebay Option Tunnel Work Area & Transmission Line
 Figure 6.9-20 of 6.9-26

T:\WGI-38\GIS_33_00\GISRequest_11\F\Deliverable_11\F\EN\126_15\EN\126_15_SpeciesDistribution_2pane_201509.mxd 20151111 [cib] [Doc No: GIS-00204]

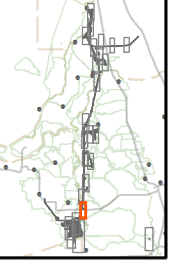


- City
 - State and Interstate Highways
 - Major roads
 - Delta Island
- Valley Elderberry Longhorn Beetle**
- Impacted Modeled Nonriparian Habitat
 - Impacted Modeled Riparian Habitat
 - Modeled Nonriparian Habitat
 - Modeled Riparian Habitat
- Conveyance Construction Footprint**
- Permanent Transmission Lines
 - Temporary Transmission Lines

N 0 1,100 Feet

** Temporary work areas may be restored after construction is complete, however, for the purposes of impact analysis, the effect is considered permanent.

** The location of the transmission lines have not been finalized. Transmission structures will be constructed to have the least impact to the surrounding habitats.



Sources: CCO Conveyance, CA WaterFix 2015; Species Occurrences, ICF 2013; Modeled Habitat, ICF 2013, ICF 2015; NAIP 2014



Impacts to Valley Elderberry Longhorn Beetle Modeled Habitat from Water Conveyance Facility Construction Modified Pipeline Tunnel/Clifton Court Forebay Option Tunnel Work Area & Transmission Line
Figure 6.9-21 of 6.9-26

T:\WGI-38\GIS_33_00\GISRequest_11\F\Deliverable_10\EN\126_15\EN\126_15_SpeciesDistribution_2pane_201509.mxd 20151111 [ciss] [Doc No: GIS-00204]

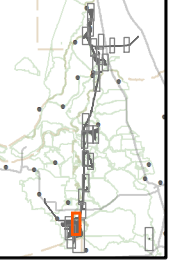


- | | | |
|---------------------------------|--|---------------------------------------|
| ● City | Valley Elderberry Longhorn Beetle | ┌─┐ Conveyance Construction Footprint |
| — State and Interstate Highways | ▬ Impacted Modeled Nonriparian Habitat | ▬ Permanent Transmission Lines |
| — Major roads | ▬ Impacted Modeled Riparian Habitat | ▬ Temporary Transmission Lines |
| ▭ Delta Island | ▬ Modeled Nonriparian Habitat | |
| | ▬ Modeled Riparian Habitat | |

N 0 1,500 Feet

** Temporary work areas may be restored after construction is complete, however, for the purposes of impact analysis, the effect is considered permanent.

** The location of the transmission lines have not been finalized. Transmission structures will be constructed to have the least impact to the surrounding habitats.



Sources: CCO Conveyance, CA WaterFix 2015; Species Occurrences, ICF 2013; Modeled Habitat, ICF 2013, ICF 2015; NAIP 2014



**Impacts to Valley Elderberry Longhorn Beetle Modeled Habitat from Water Conveyance Facility Construction
Modified Pipeline Tunnel/Clifton Court Forebay Option
Clifton Court Forebay
Figure 6.9-22 of 6.9-26**

T:\WGI-38\GIS_33_00\GISRequest_11\F\Deliverable_10\EN\126_15\EN\126_15_SpeciesDistribution_2pane_20151111 [ciss] [Doc No: GIS-00204]



- City
 - State and Interstate Highways
 - Major roads
 - Delta Island
- | | |
|--|---|
| <p>Valley Elderberry Longhorn Beetle</p> <ul style="list-style-type: none"> ■ Impacted Modeled Nonriparian Habitat ■ Impacted Modeled Riparian Habitat ■ Modeled Nonriparian Habitat ■ Modeled Riparian Habitat | <ul style="list-style-type: none"> — Conveyance Construction Footprint — Permanent Transmission Lines — Temporary Transmission Lines |
|--|---|

N 0 2,250 Feet

** Temporary work areas may be restored after construction is complete, however, for the purposes of impact analysis, the effect is considered permanent.

** The location of the transmission lines have not been finalized. Transmission structures will be constructed to have the least impact to the surrounding habitats.



Sources: CCO Conveyance, CA WaterFix 2015; Species Occurrences, ICF 2013; Modeled Habitat, ICF 2013, ICF 2015; NAIP 2014



Impacts to Valley Elderberry Longhorn Beetle Modeled Habitat from Water Conveyance Facility Construction Modified Pipeline Tunnel/Clifton Court Forebay Option

New Forebay

Figure 6.9-23 of 6.9-26

T:\WGI-38\GIS_33_00\GISRequest_11\F\Deliverable_10\EN\126_15\EN\126_15_SpeciesDistribution_2pane_20151111 [c] [s] [Doc No: GIS-00204]

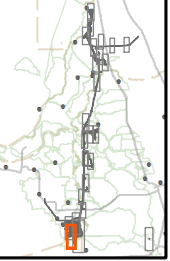


- City
 - State and Interstate Highways
 - Major roads
 - Delta Island
- Valley Elderberry Longhorn Beetle**
- Impacted Modeled Nonriparian Habitat
 - Impacted Modeled Riparian Habitat
 - Modeled Nonriparian Habitat
 - Modeled Riparian Habitat
- Conveyance Construction Footprint
 - Permanent Transmission Lines
 - Temporary Transmission Lines

N 0 1,600 Feet

** Temporary work areas may be restored after construction is complete, however, for the purposes of impact analysis, the effect is considered permanent.

** The location of the transmission lines have not been finalized. Transmission structures will be constructed to have the least impact to the surrounding habitats.

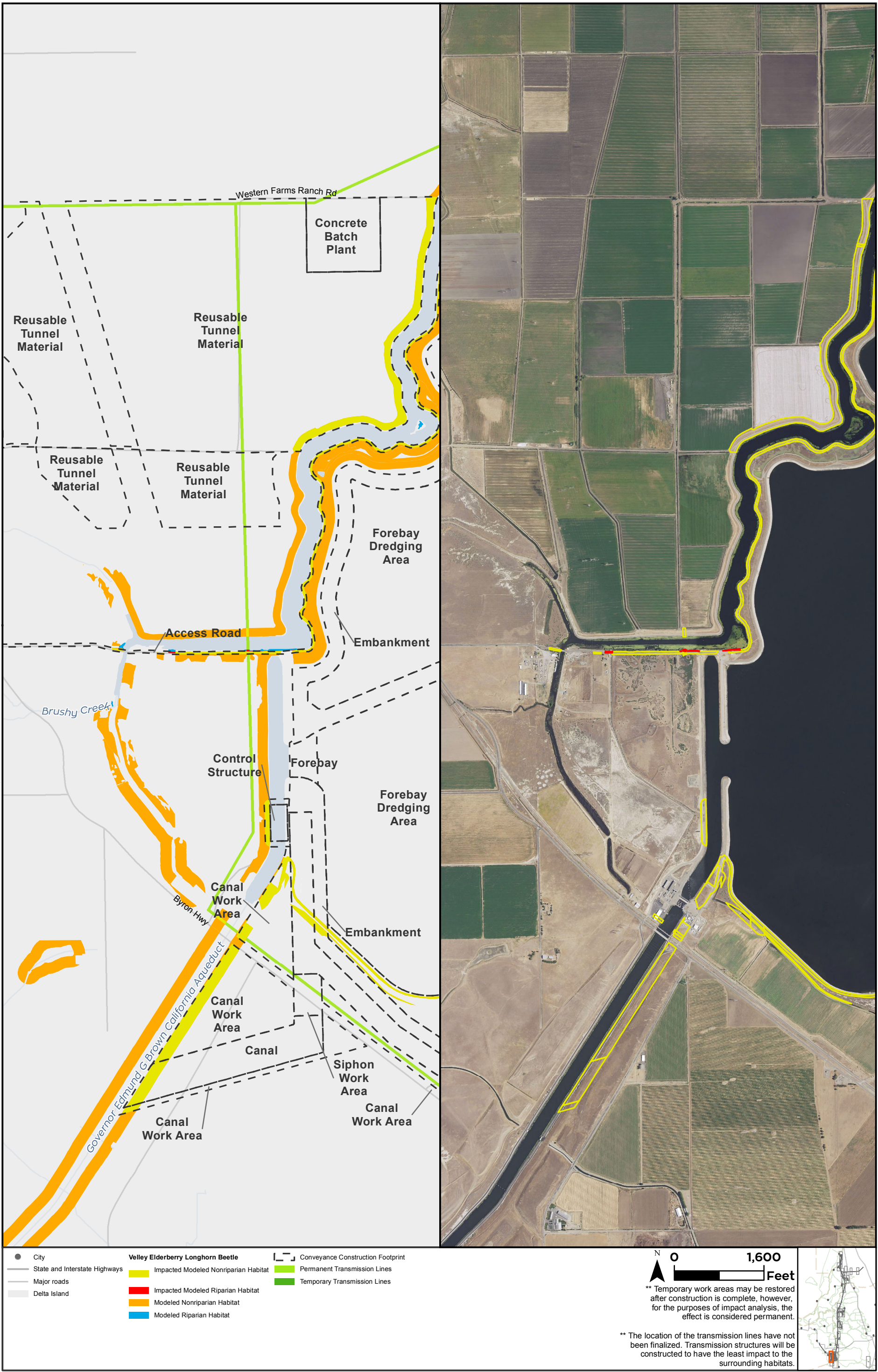


Sources: CCO Conveyance, CA WaterFix 2015; Species Occurrences, ICF 2013; Modeled Habitat, ICF 2013, ICF 2015; NAIP 2014



**Impacts to Valley Elderberry Longhorn Beetle Modeled Habitat from Water Conveyance Facility Construction
Modified Pipeline Tunnel/Clifton Court Forebay Option
Clifton Court Forebay
Figure 6.9-24 of 6.9-26**

T:\WGI-38\GIS_33_00\GISRequest_11\F\Deliverable_10\F\ENV\126_15\ENV\126_15_SpeciesDistribution_2pane_201509.mxd 20151111 [c:\isb] [Doc No: GIS-00204]

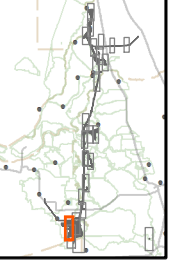


- City
- State and Interstate Highways
- Major roads
- Delta Island
- Valley Elderberry Longhorn Beetle**
- Impacted Modeled Nonriparian Habitat
- Impacted Modeled Riparian Habitat
- Modeled Nonriparian Habitat
- Modeled Riparian Habitat
- Conveyance Construction Footprint
- Permanent Transmission Lines
- Temporary Transmission Lines

N 0 1,600 Feet

** Temporary work areas may be restored after construction is complete, however, for the purposes of impact analysis, the effect is considered permanent.

** The location of the transmission lines have not been finalized. Transmission structures will be constructed to have the least impact to the surrounding habitats.

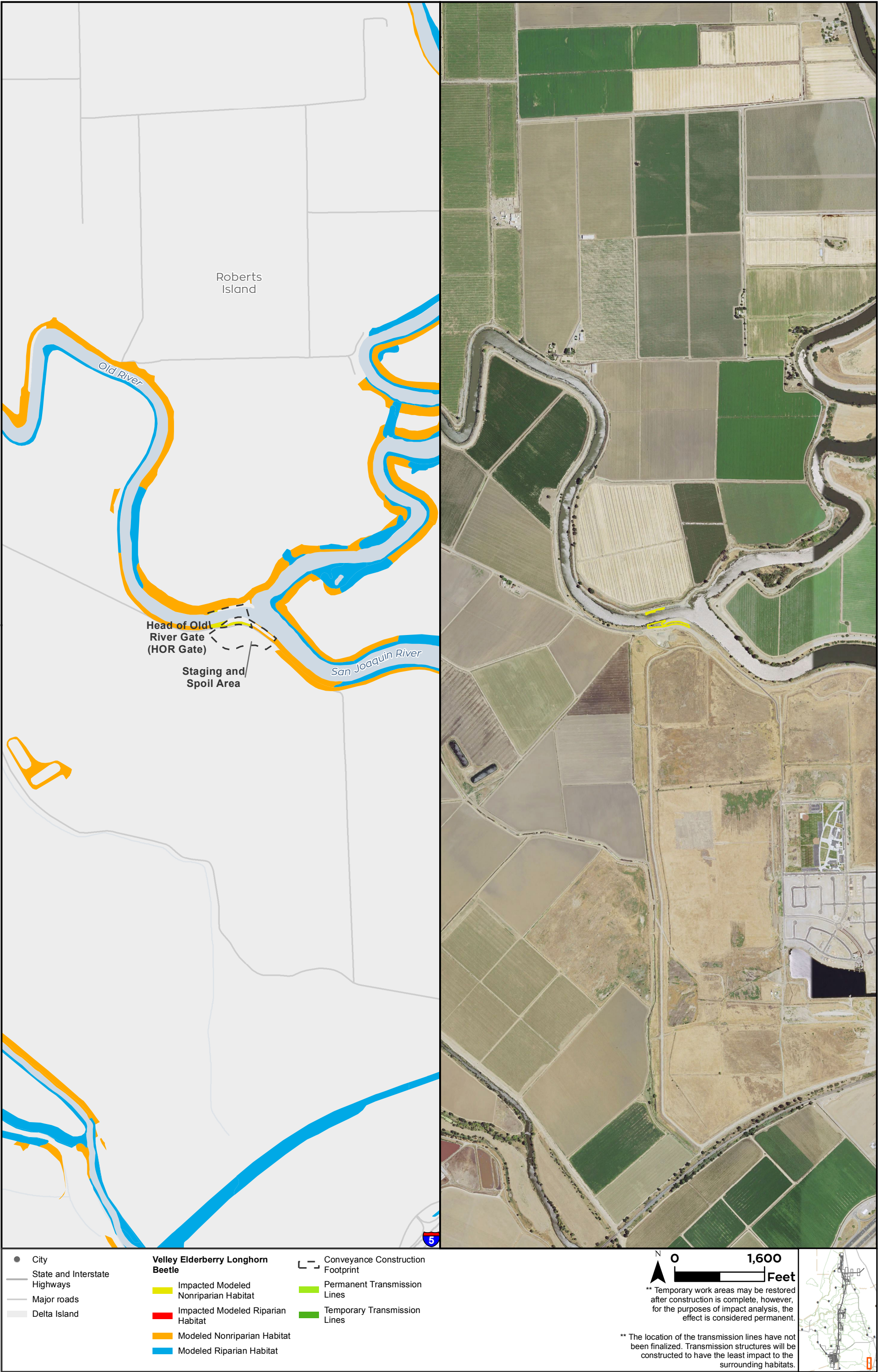


Sources: CCO Conveyance, CA WaterFix 2015; Species Occurrences, ICF 2013; Modeled Habitat, ICF 2013, ICF 2015; NAIP 2014



**Impacts to Valley Elderberry Longhorn Beetle Modeled Habitat from Water Conveyance Facility Construction
Modified Pipeline Tunnel/Clifton Court Forebay Option
Clifton Court Forebay
Figure 6.9-25 of 6.9-26**

T:\WGI-38\GIS_33_00\GISRequest_11\F\Deliverable_11\F\EN\126_15\EN\126_15_SpeciesDistribution_2pane_201512.mxd 20151222 [clsb] [Doc No: GIS-00204]



- City
- State and Interstate Highways
- Major roads
- Delta Island

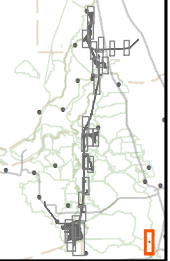
- Valley Elderberry Longhorn Beetle**
- Impacted Modeled Nonriparian Habitat
 - Impacted Modeled Riparian Habitat
 - Modeled Nonriparian Habitat
 - Modeled Riparian Habitat

- Conveyance Construction Footprint
- Permanent Transmission Lines
- Temporary Transmission Lines

0 1,600 Feet

** Temporary work areas may be restored after construction is complete, however, for the purposes of impact analysis, the effect is considered permanent.

** The location of the transmission lines have not been finalized. Transmission structures will be constructed to have the least impact to the surrounding habitats.



Sources: CCO Conveyance, CA WaterFix 2015; Species Occurrences, ICF 2013; Modeled Habitat, ICF 2013, ICF 2015; NAIP 2014



Impacts to Valley Elderberry Longhorn Beetle Modeled Habitat from Water Conveyance Facility Construction Modified Pipeline Tunnel/Clifton Court Forebay Option Operable Barrier

Figure 6.9-26 of 6.9-26