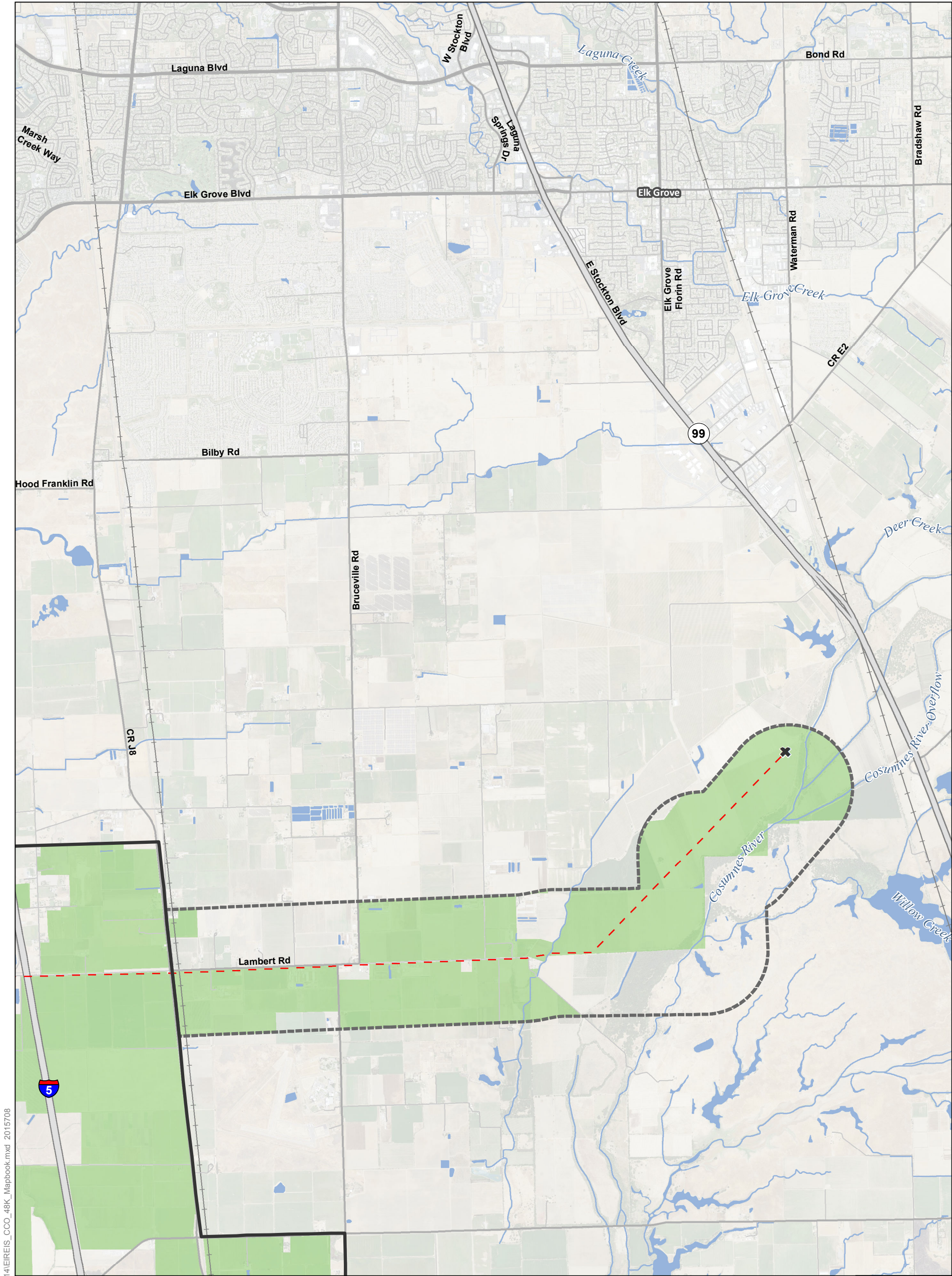


T:\WGL\38\GIS\_33\_00\GISRequest\_11\FIC\FICF098\_14\IREIS\_CCO\_48K\_Mapbook.mxd 2015708

Sources: Plan Area, ICF 2012; DWR DCE MPTO Construction Footprint (rev 5a); Williamson Act 2009

**Figure M14-8: Sheet 1 of 8**  
**Lands under Williamson Act Contracts — Modified Pipeline/Tunnel Alignment (Alternative 4)**





**Legend**

Plan Area

Areas of Additional Analysis (Outside of Legal Delta; for Power Only)

**Conveyance Construction Footprint**

Permanent Subsurface Impact

**Temporary Surface Impact**

Geotechnical Planning Area

Work Area

Other

**Permanent Surface Impact**

Canal

Reusable Tunnel Material Area

Other

**Proposed Power**

Substation

Proposed Tower Relocation

Interconnection Point

Existing Tower

Permanent OH Transmission Line

Temporary OH Transmission Line

Existing Permanent OH Transmission Line

Williamson Act Lands

0 3,000 6,000  
Feet  
1:48,000

**Notes:**

- \*Surface impacts are not expected to result from subsurface features.
- \*\*In-river features are not a permanent impact to navigation.
- \*\*\*Surface impacts will only occur at sites selected for geotechnical explorations. See Ch. 3, Section 3.6.1.10 for more information

Sources: Plan Area, ICF 2012; DWR DCE MPTO Construction Footprint (rev 5a); Williamson Act 2009

**Figure M14-8: Sheet 2 of 8**  
**Lands under Williamson Act Contracts — Modified Pipeline/Tunnel Alignment (Alternative 4)**









**Legend**

Plan Area

Areas of Additional Analysis (Outside of Legal Delta; for Power Only)

**Conveyance Construction Footprint**

Permanent Subsurface Impact

**Temporary Surface Impact**

Geotechnical Planning Area

Work Area

Other

**Permanent Surface Impact**

Canal

Reusable Tunnel Material Area

Other

**Proposed Power**

Substation

Proposed Tower Relocation

Interconnection Point

Existing Tower

Permanent OH Transmission Line

Temporary OH Transmission Line

Existing Permanent OH Transmission Line

Williamson Act Lands

0 3,000 6,000  
Feet  
1:48,000

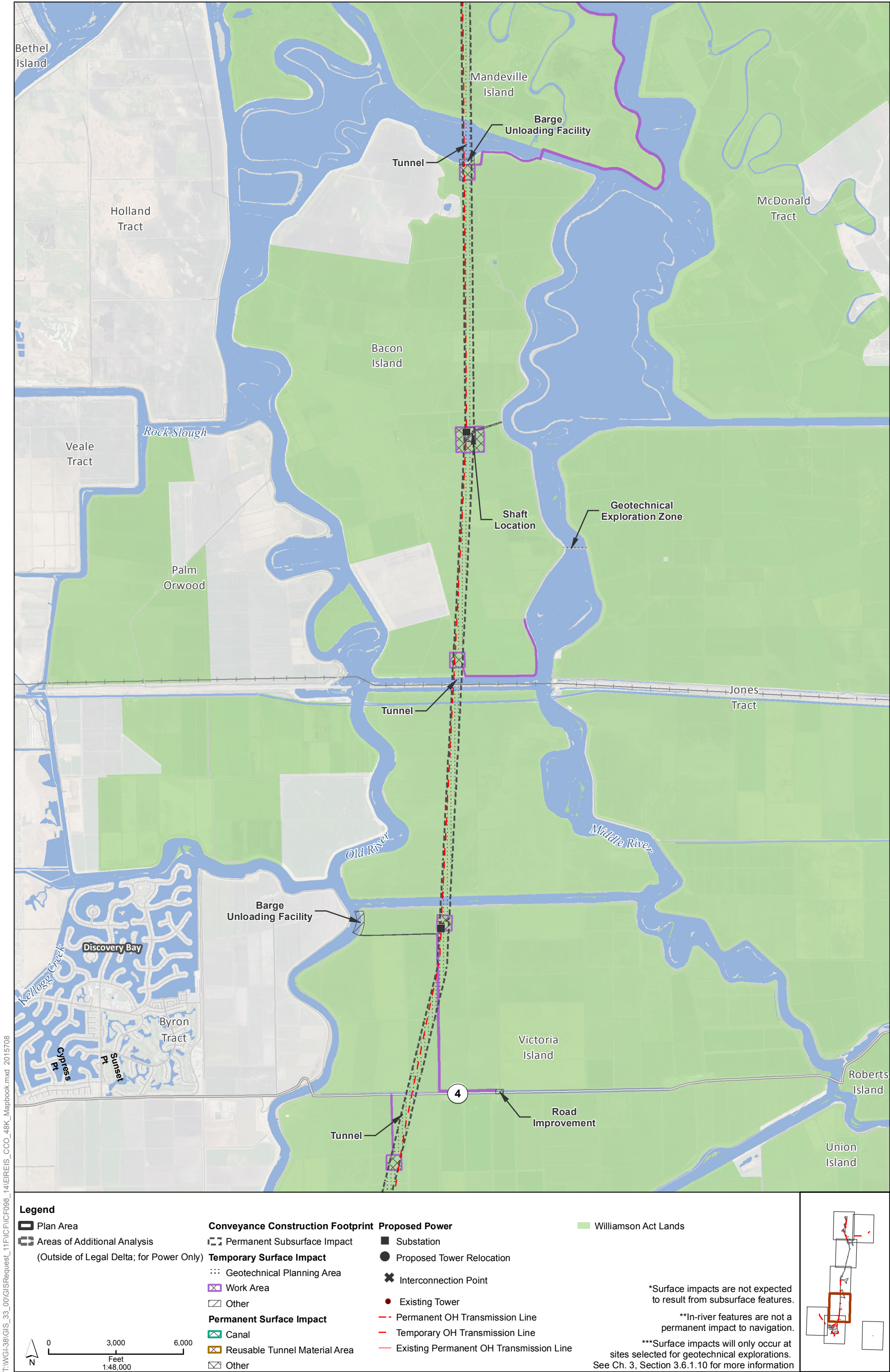
N

\*Surface impacts are not expected to result from subsurface features.  
\*\*In-river features are not a permanent impact to navigation.  
\*\*\*Surface impacts will only occur at sites selected for geotechnical explorations. See Ch. 3, Section 3.6.1.10 for more information

Sources: Plan Area, ICF 2012; DWR DCE MPTO Construction Footprint (rev 5a); Williamson Act 2009

**Figure M14-8: Sheet 4 of 8**  
**Lands under Williamson Act Contracts — Modified Pipeline/Tunnel Alignment (Alternative 4)**





T:\WGL\38\GIS\_33\_00\GISRequest\_11\FIC\FICF098\_14\IREIS\_CCO\_48K\_Mapbook.mxd 2015708

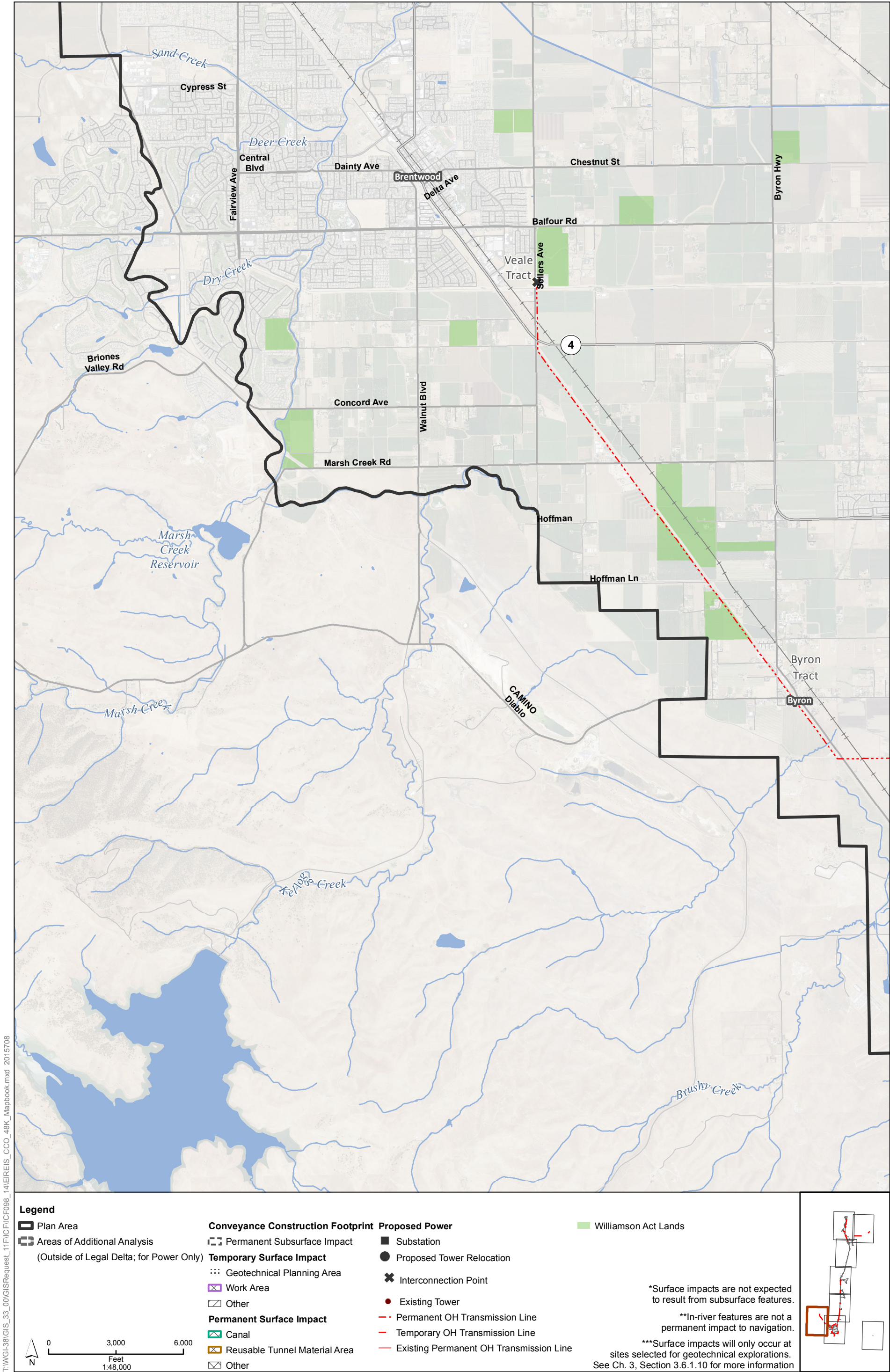
Sources: Plan Area, ICF 2012; DWR DCE MPTO Construction Footprint (rev 5a); Williamson Act 2009

**Figure M14-8: Sheet 5 of 8**  
**Lands under Williamson Act Contracts — Modified Pipeline/Tunnel Alignment (Alternative 4)**





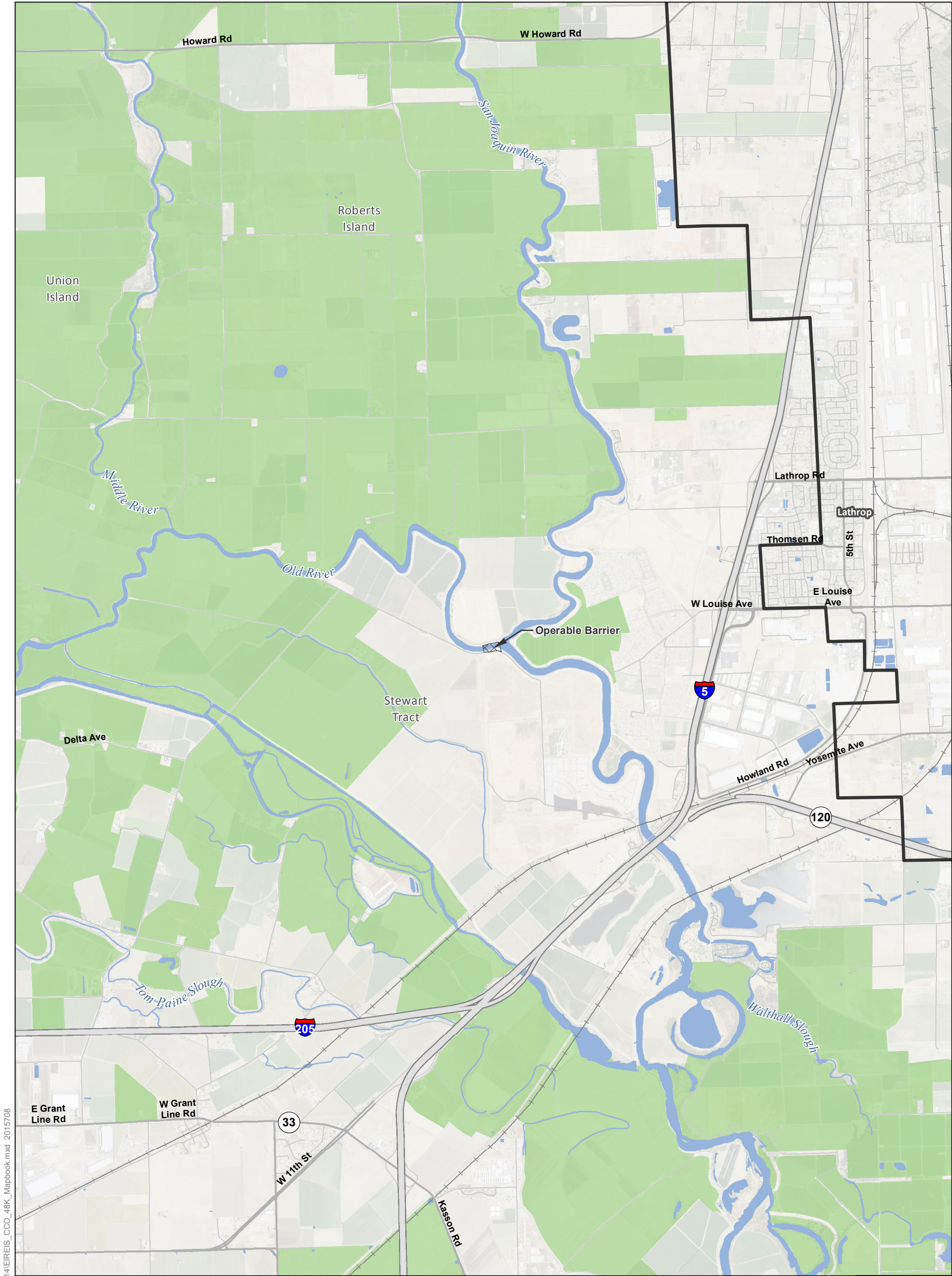




Sources: Plan Area, ICF 2012; DWR DCE MPTO Construction Footprint (rev 5a); Williamson Act 2009

**Figure M14-8: Sheet 7 of 8**  
**Lands under Williamson Act Contracts — Modified Pipeline/Tunnel Alignment (Alternative 4)**





T:\WGL\GIS\33\_00\GISRequest\_11\FIC\FICF098\_14\IREIS\_CCO\_48K\_Mapbook.mxd 2015708

**Legend**

Plan Area

Areas of Additional Analysis  
(Outside of Legal Delta; for Power Only)

**Conveyance Construction Footprint**

Permanent Subsurface Impact

**Temporary Surface Impact**

Geotechnical Planning Area

Work Area

Other

**Permanent Surface Impact**

Canal

Reusable Tunnel Material Area

Other

**Proposed Power**

Substation

Proposed Tower Relocation

Interconnection Point

Existing Tower

Permanent OH Transmission Line

Temporary OH Transmission Line

Existing Permanent OH Transmission Line

Williamson Act Lands

\*Surface impacts are not expected to result from subsurface features.

\*\*In-river features are not a permanent impact to navigation.

\*\*\*Surface impacts will only occur at sites selected for geotechnical explorations. See Ch. 3, Section 3.6.1.10 for more information

Sources: Plan Area, ICF 2012; DWR DCE MPTO Construction Footprint (rev 5a); Williamson Act 2009

**Figure M14-8: Sheet 8 of 8**  
**Lands under Williamson Act Contracts — Modified Pipeline/Tunnel Alignment (Alternative 4)**