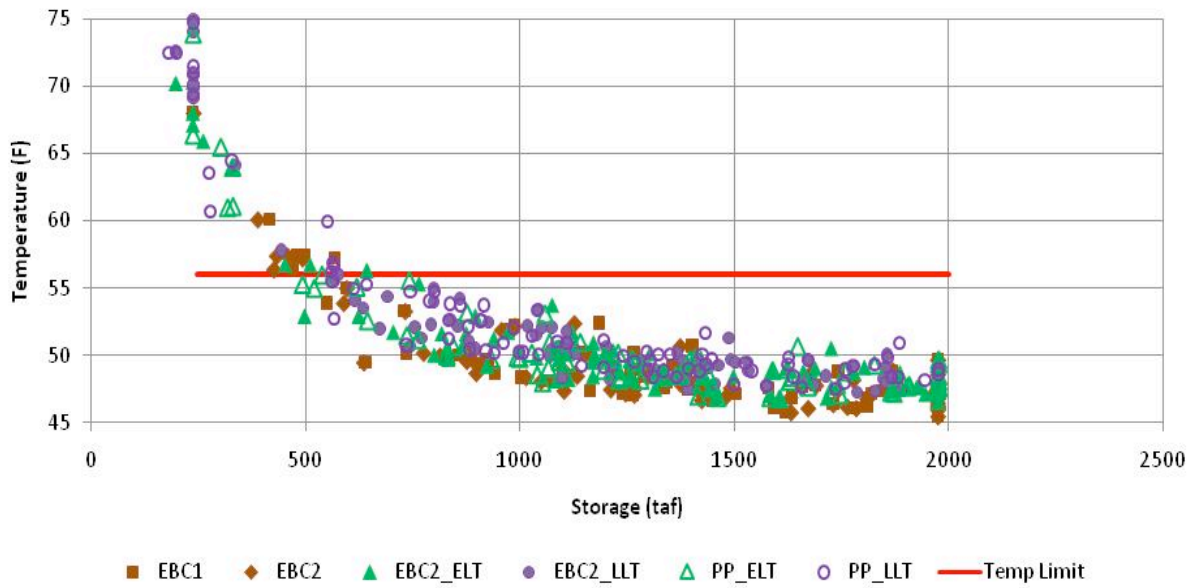
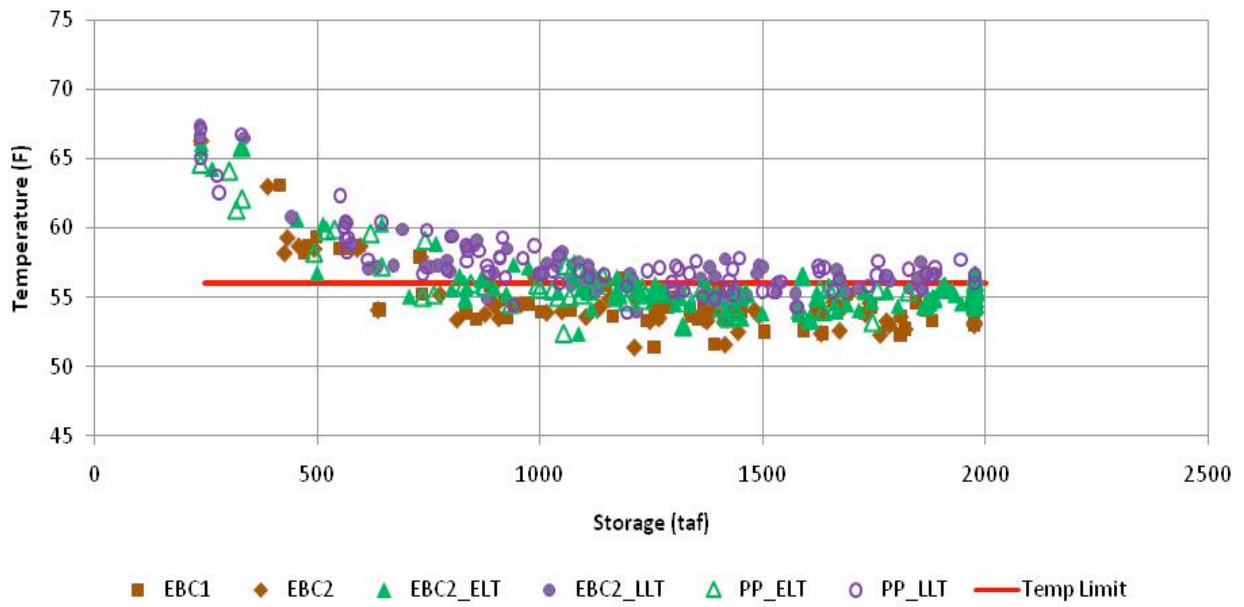


Appendix 29C-1

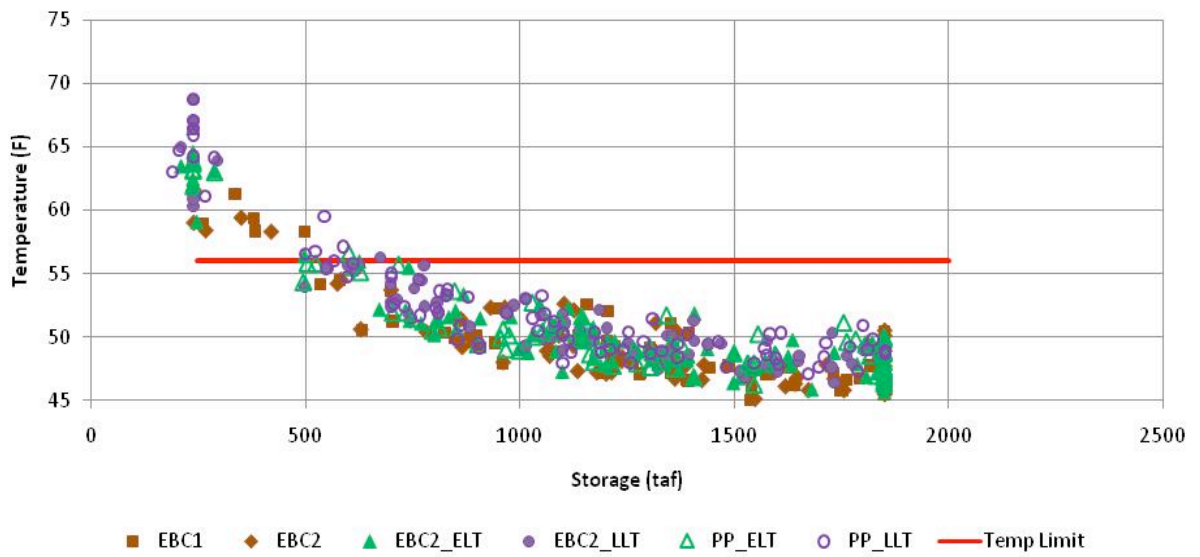
**USBR Temperature Model Monthly Ranges for Lewiston Reservoir
Release Temperatures and Trinity River Temperatures at Douglas City
and North Fork for WY 1922-2003 for EBC2**



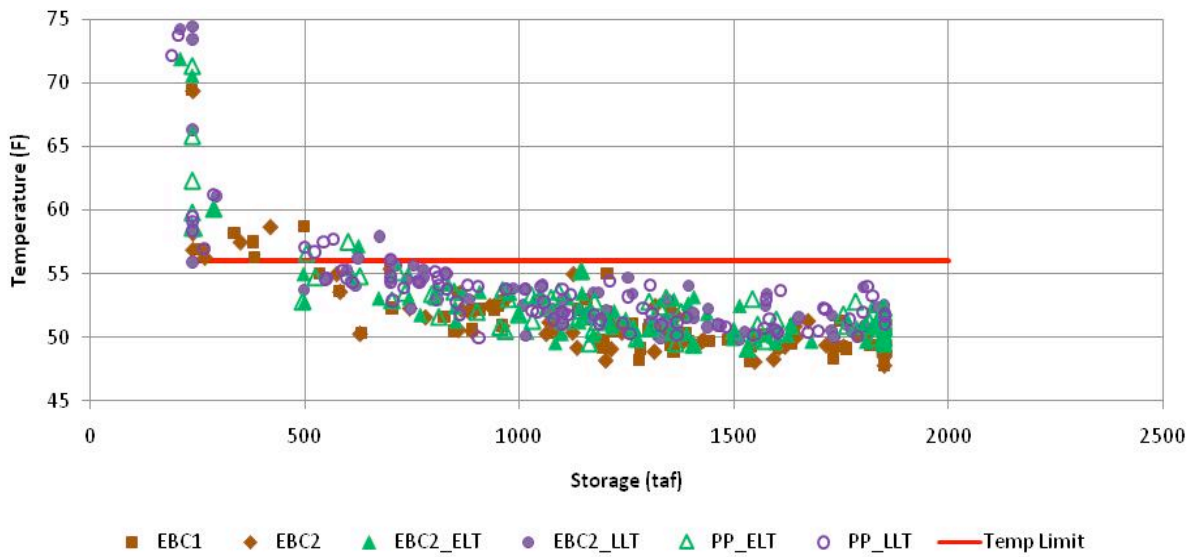
Appendix 29C-2a
Trinity Reservoir Storage (taf) and Lewiston
Release Temperature (F) in September
for the Six BDCP Cases for WY 1922-2003



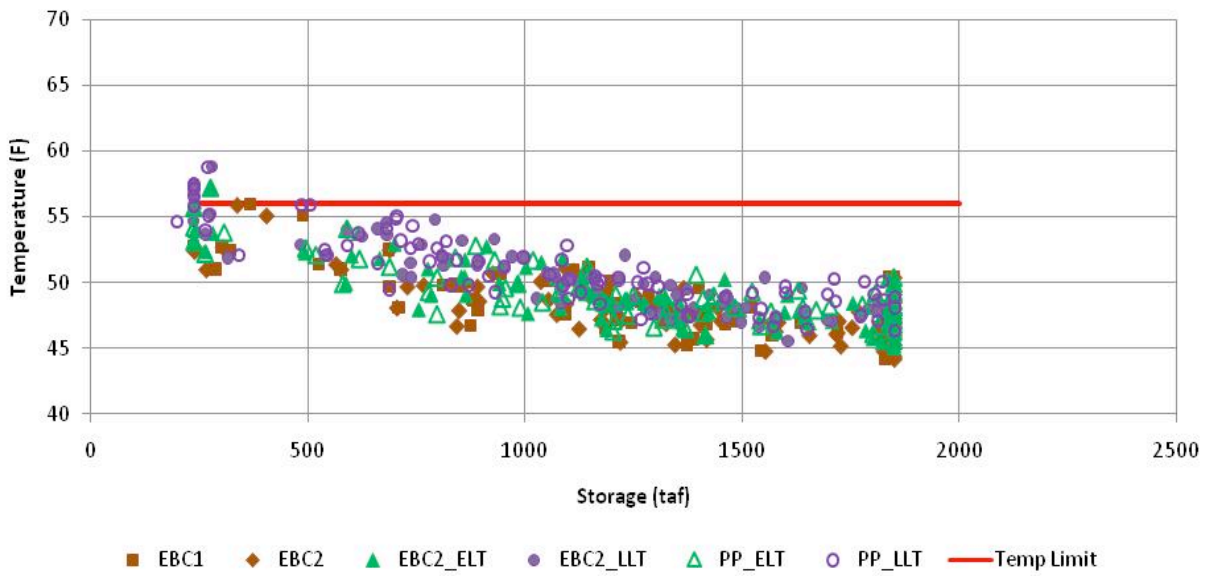
Appendix 29C-2b
Trinity Reservoir Storage (taf) and Douglas City
Temperature (F) in September
for the Six BDCP Cases for WY 1922-2003



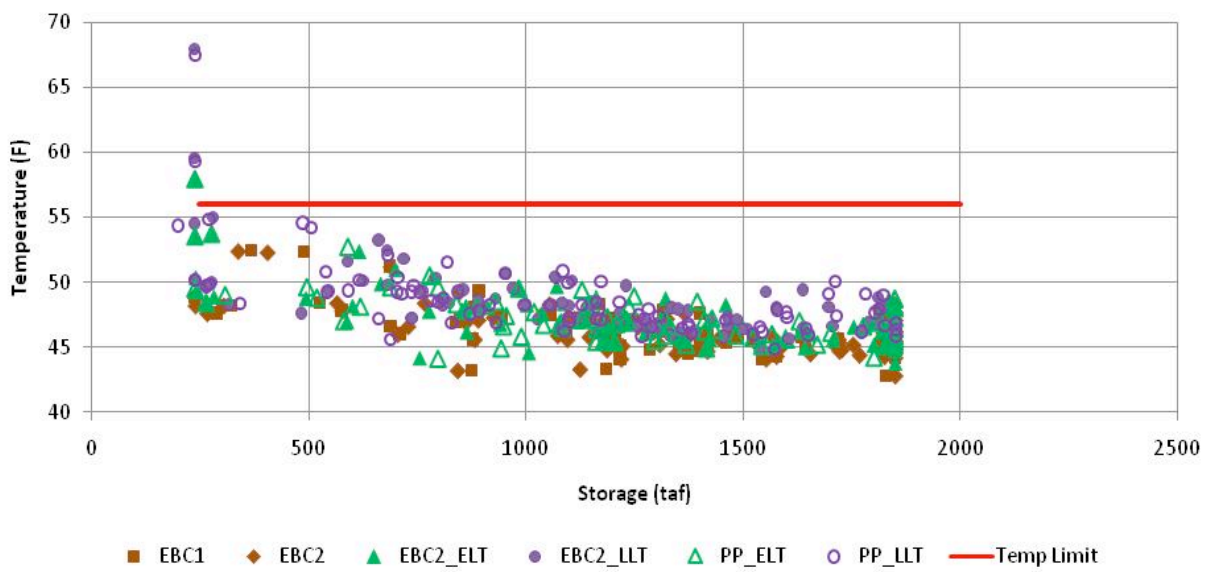
Appendix 29C-3a
Trinity Reservoir Storage (taf) and Lewiston
Release Temperature (F) in October
for the Six BDCP Cases for WY 1922-2003



Appendix 29C-3b
Trinity Reservoir Storage (taf) and Douglas City
Temperature (F) in October
for the Six BDCP Cases for WY 1922-2003

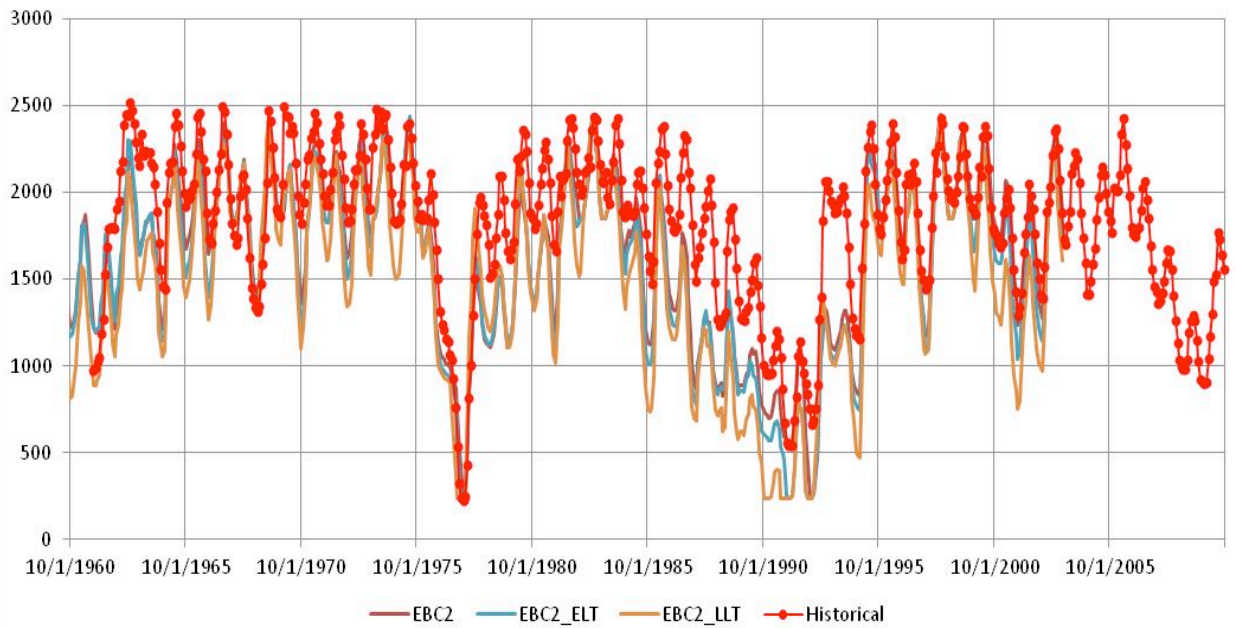


Appendix 29C-4a
Trinity Reservoir Storage (taf) and Lewiston
Release Temperature (F) in November
for the Six BDCP Cases for WY 1922-2003

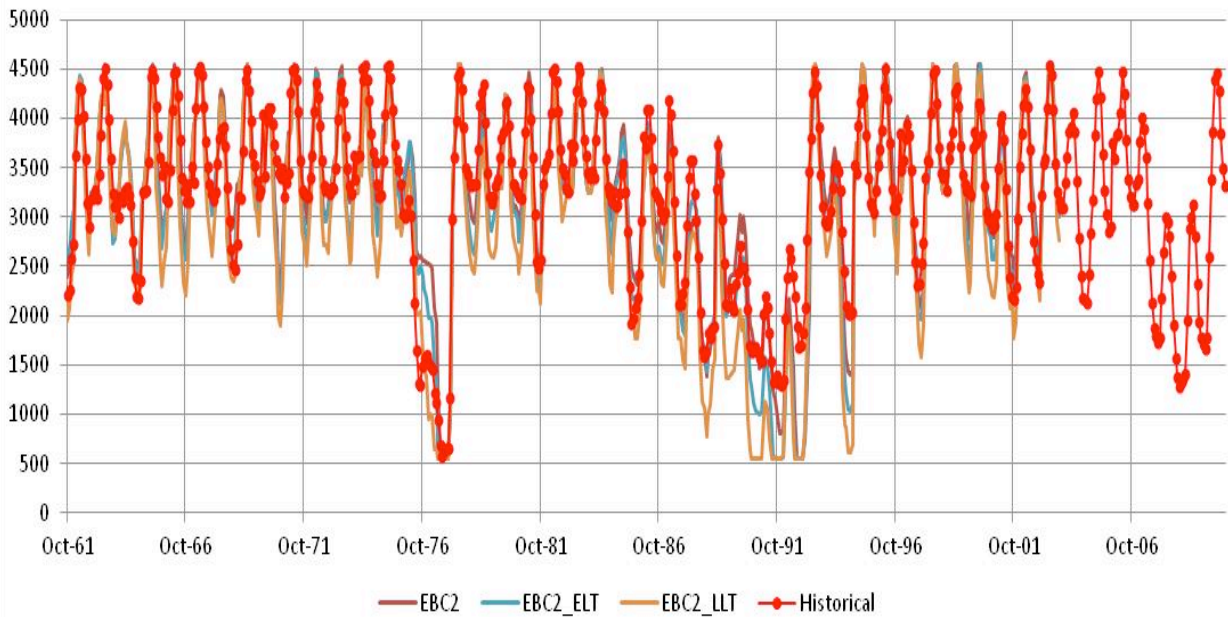


Appendix_29c (September 13, 2013 11:10 AM) 55

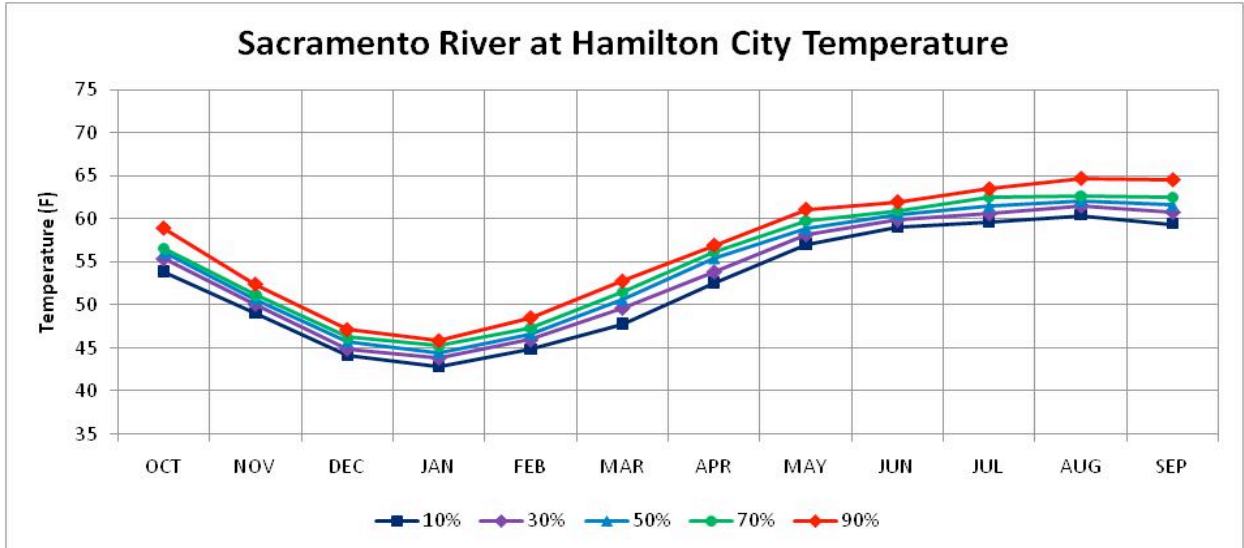
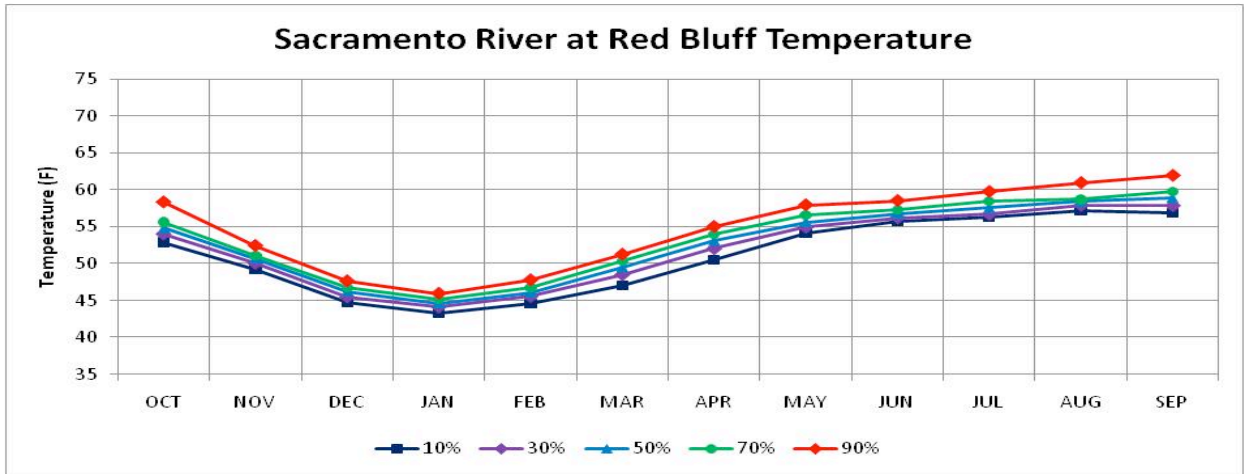
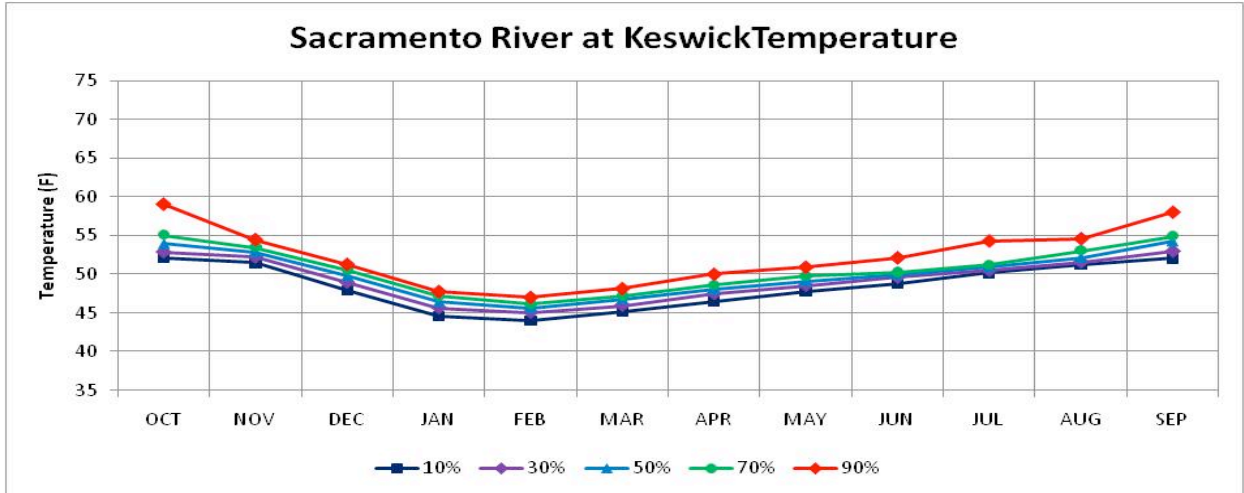
Appendix 29C-4b
Trinity Reservoir Storage (taf) and Douglas City
Temperature (F) in November
for the Six BDCP Cases for WY 1922-2003



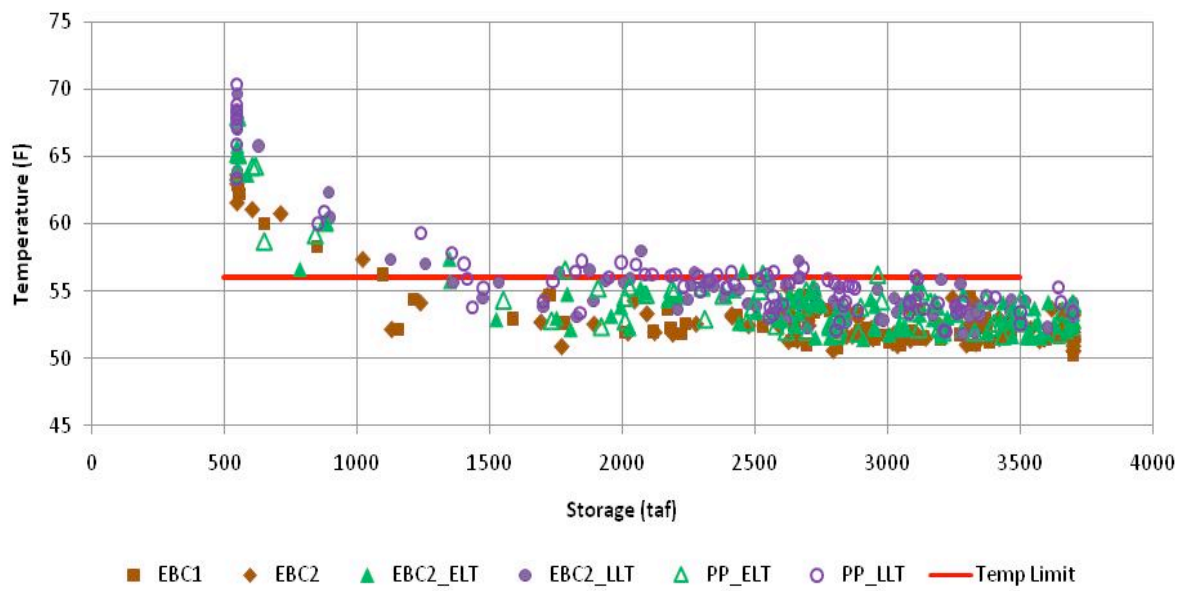
Appendix 29C-5a
Historical and CALSIM-Simulated
Trinity Reservoir Storage
for WY 1961-2010



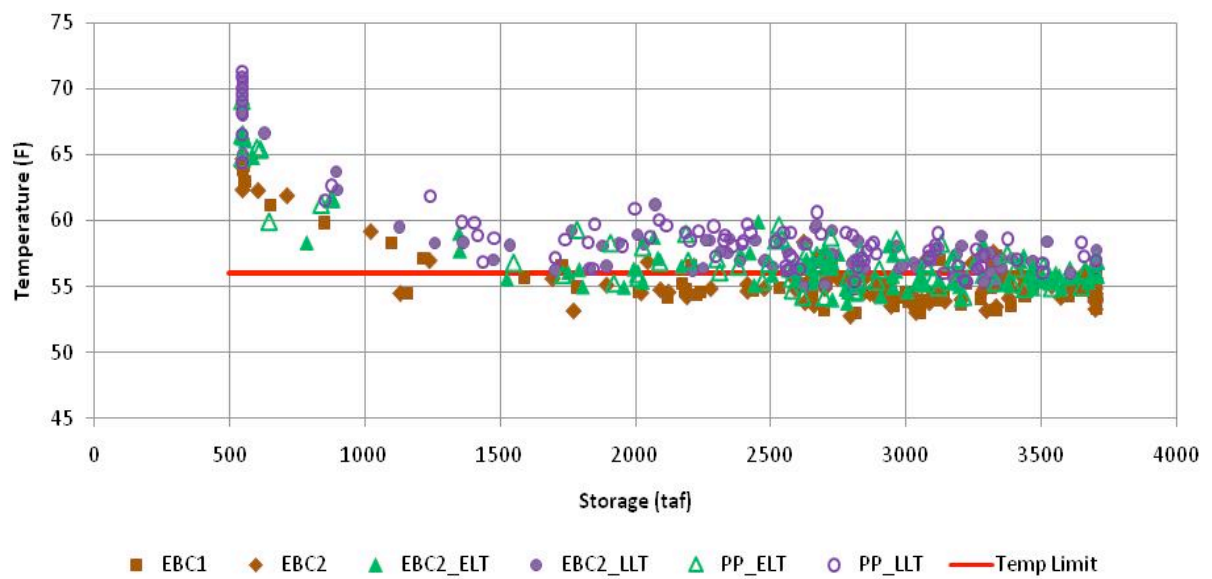
Appendix 29C-5b
Historical and CALSIM-Simulated
Shasta Reservoir Storage
for WY 1961-2010



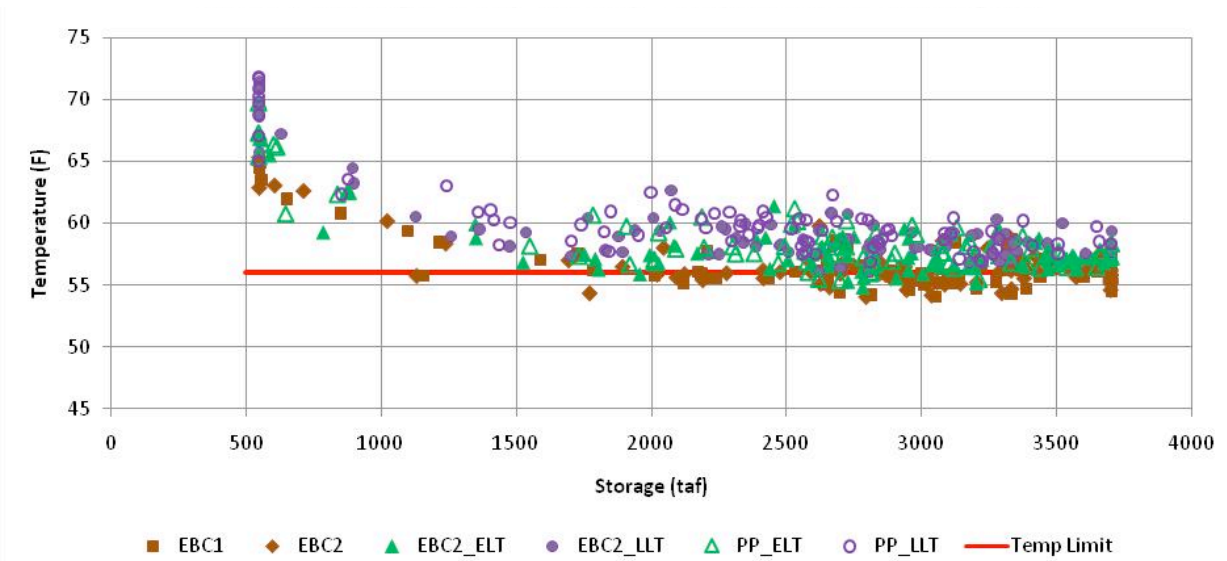
**Appendix 29C-6
SRWQM Monthly Temperature Ranges for Keswick Reservoir
Release Temperatures and Sacramento River Temperatures at Red Bluff
and Hamilton City for WY 1922-2003 for EBC2**



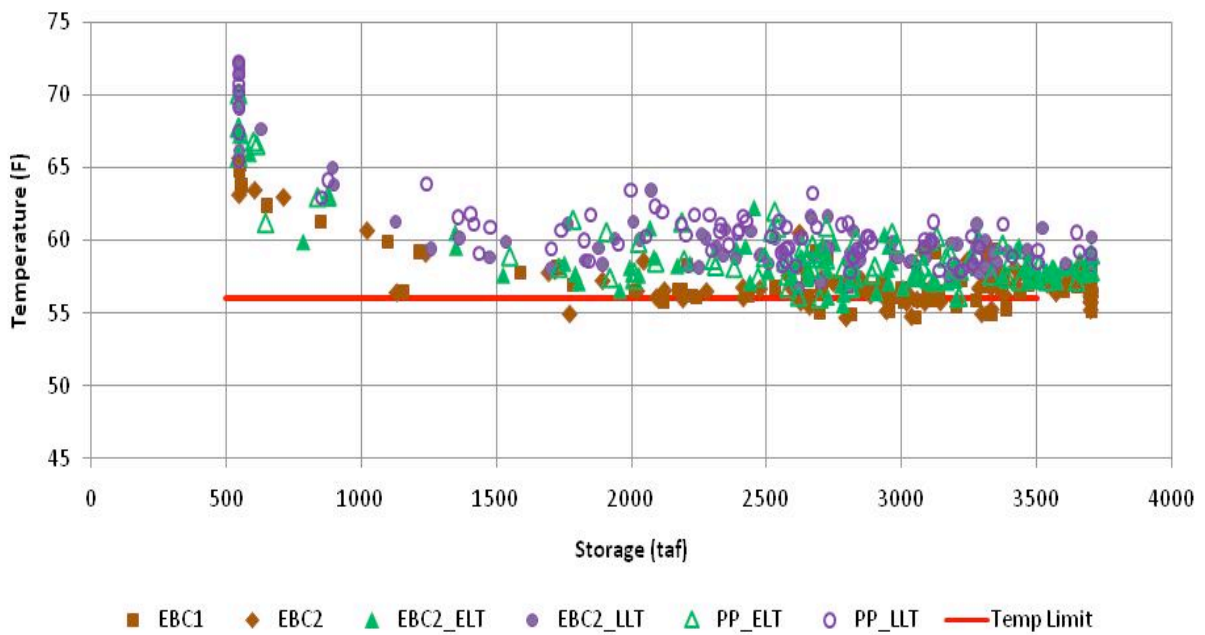
Appendix 29C-7a
Shasta Reservoir Storage (taf) and Keswick
Release Temperature (F) in August
for the Six BDCP Cases for WY 1922-2003



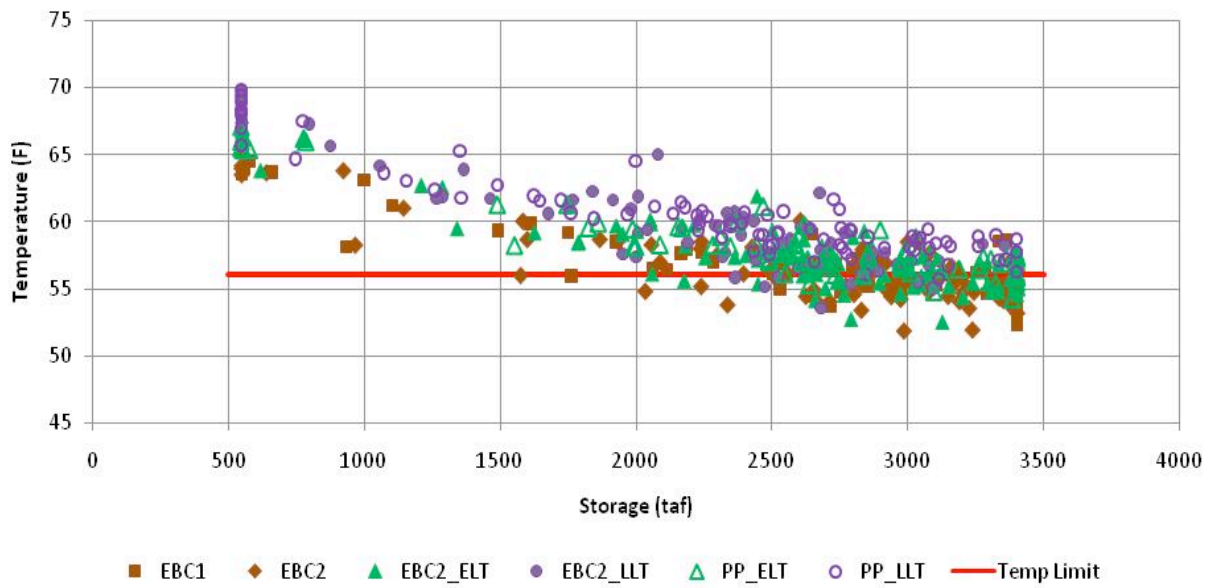
Appendix 29C-7b
Shasta Reservoir Storage (taf) and Sacramento River
at Ball's Ferry Temperature (F) in August
for the Six BDCP Cases for WY 1922-2003



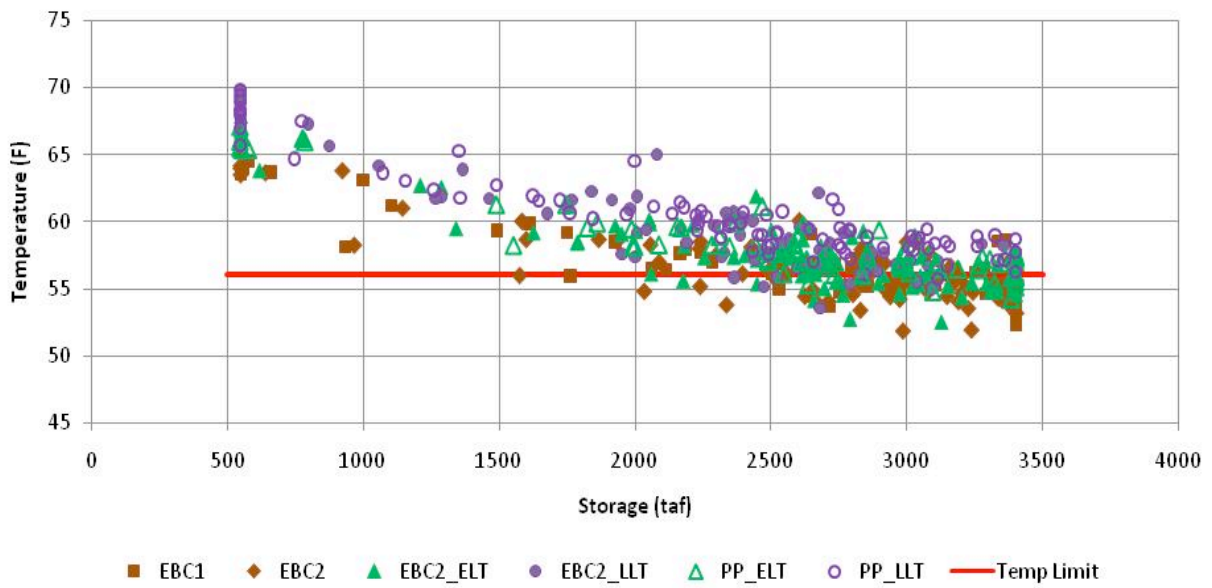
Appendix 29C-7c
Shasta Reservoir Storage (taf) and Sacramento River at Jelly's Ferry
Temperature (F) in August
for the Six BDCP Cases for WY 1922-2003



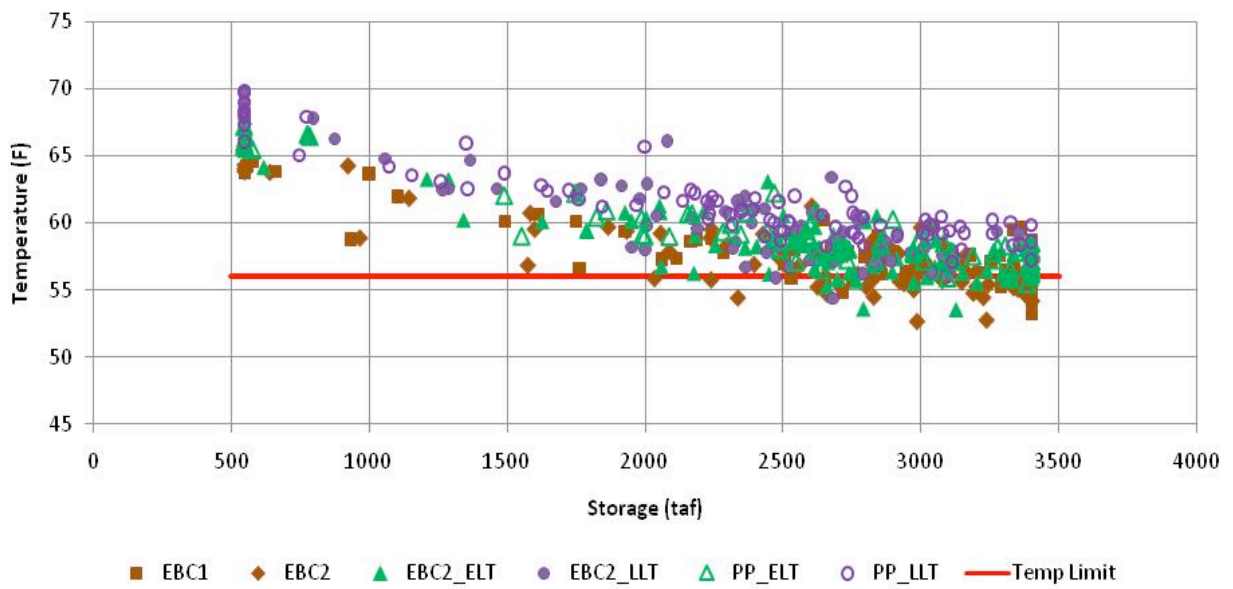
Appendix 29C-7d
Shasta Reservoir Storage (taf) and Sacramento River at Bend Bridge
Temperature (F) in August
for the Six BDCP Cases for WY 1922-2003



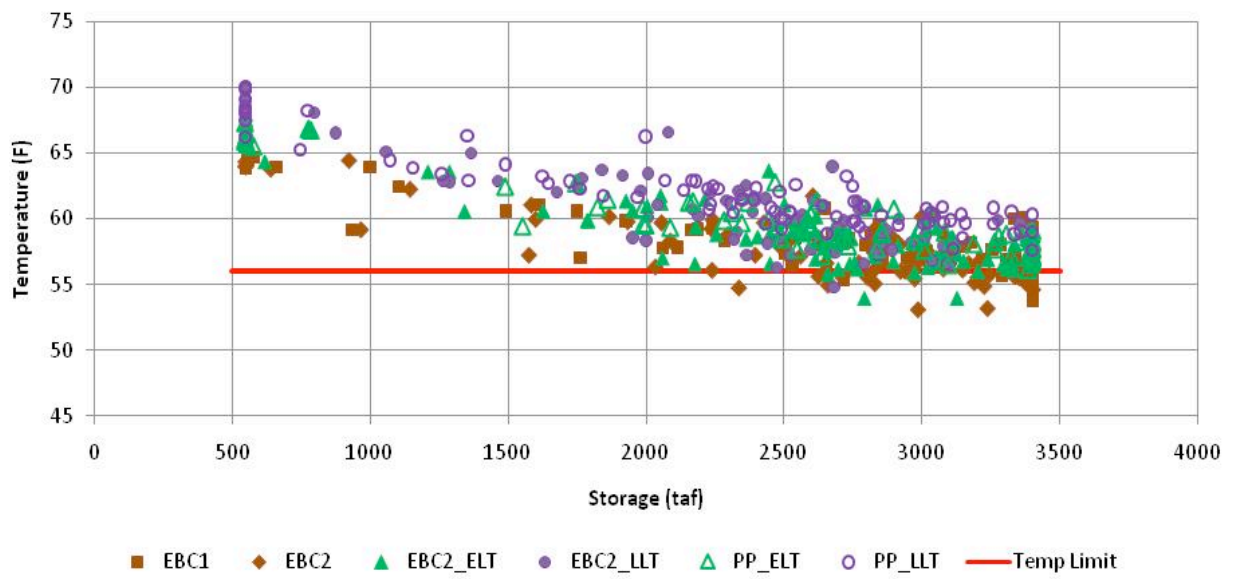
Appendix 29C-8a
Shasta Reservoir Storage (taf) and Keswick
Release Temperature (F) in September
for the Six BDCP Cases for WY 1922-2003



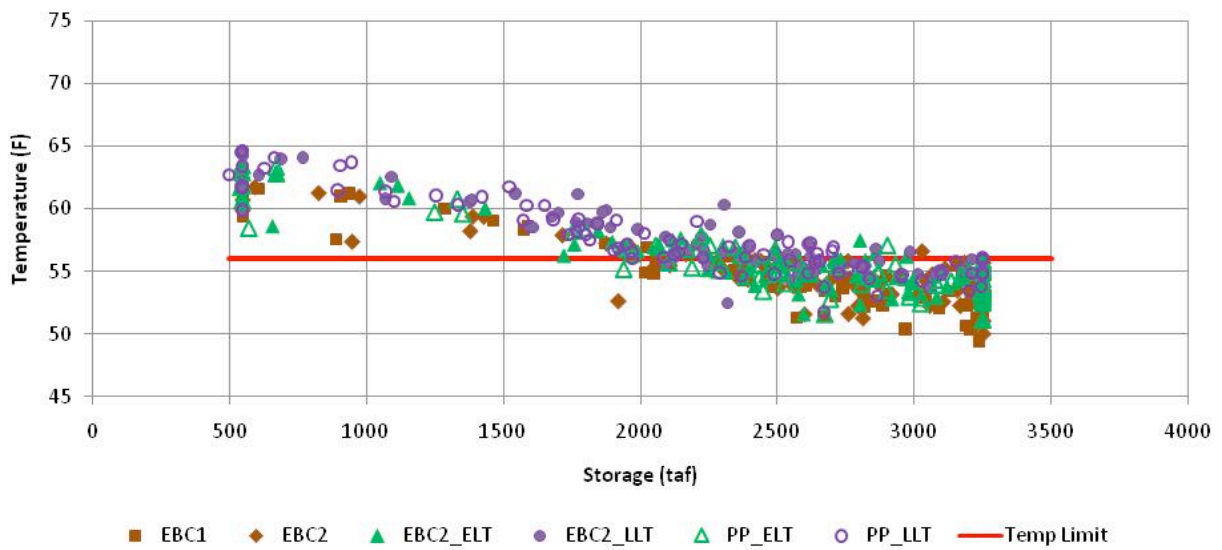
Appendix 29C-8b
Shasta Reservoir Storage (taf) and Sacramento River at Ball's Ferry
Temperature (F) in September
for the Six BDCP Cases for WY 1922-2003



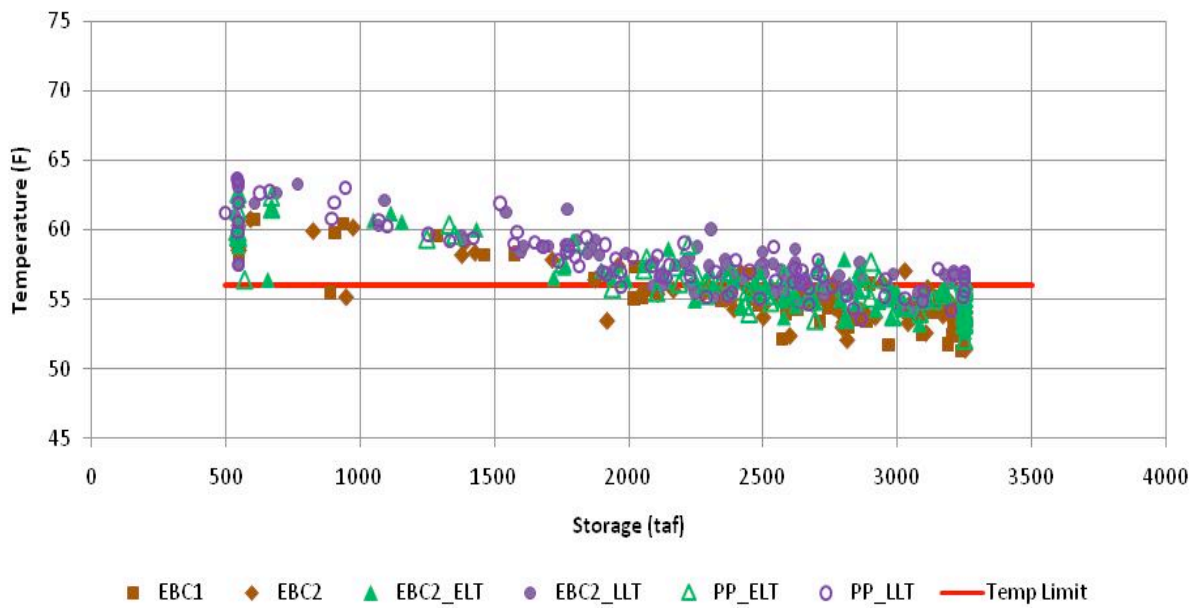
Appendix 29C-8c
Shasta Reservoir Storage (taf) and Sacramento River at Jelly's Ferry
Temperature (F) in September
for the Six BDCP Cases for WY 1922-2003



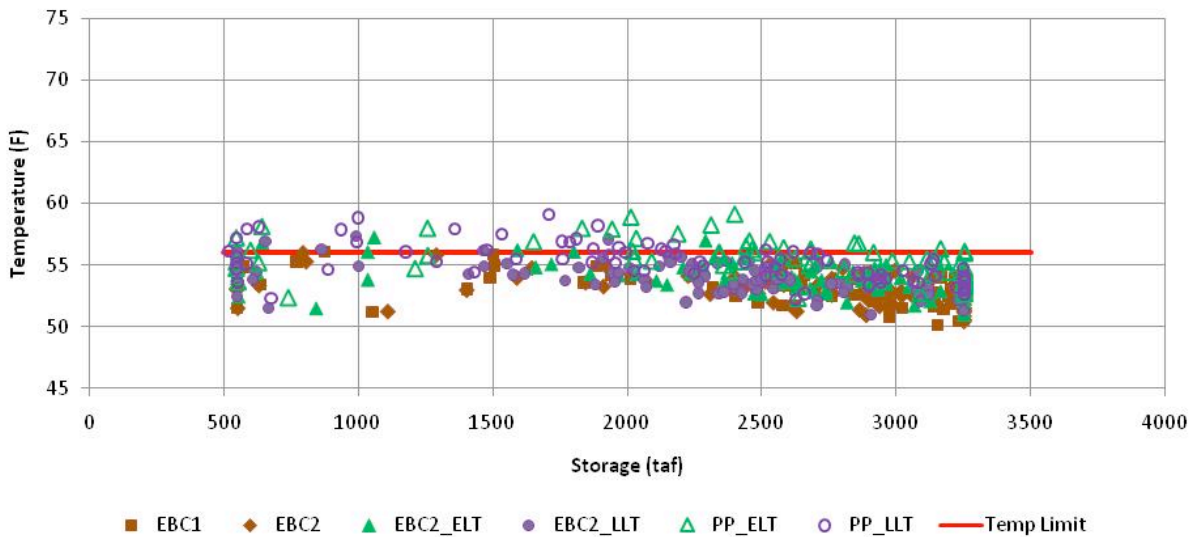
Appendix 29C-8d
Shasta Reservoir Storage (taf) and Sacramento River at Bend Bridge
Temperature (F) in September
for the Six BDCP Cases for WY 1922-2003



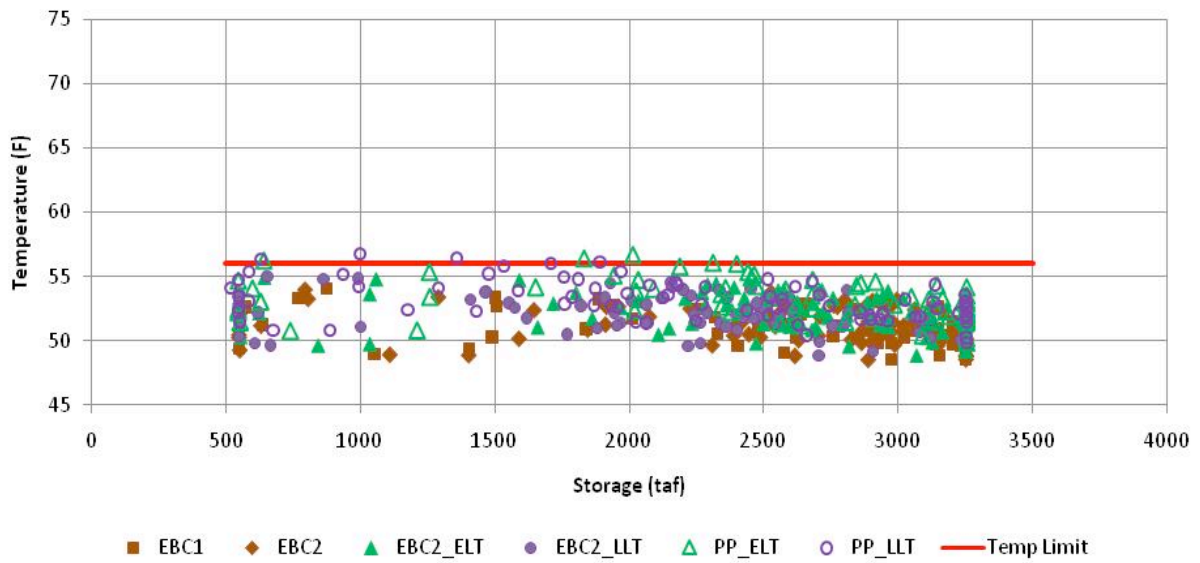
Appendix 29C-9a
Shasta Reservoir Storage (taf) and Keswick
Release Temperature (F) in October
for the Six BDCP Cases for WY 1922-2003



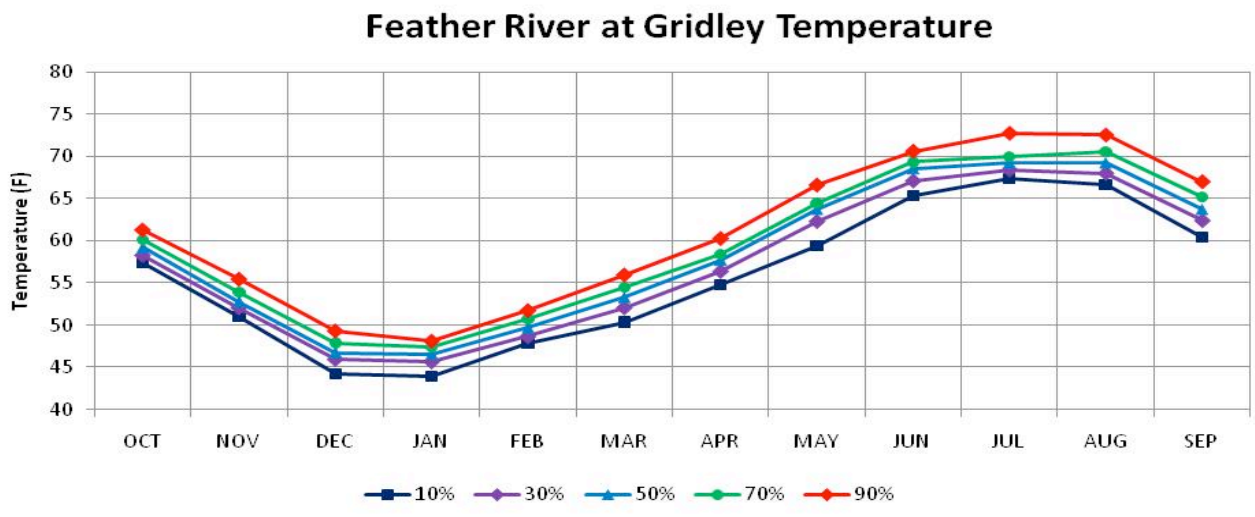
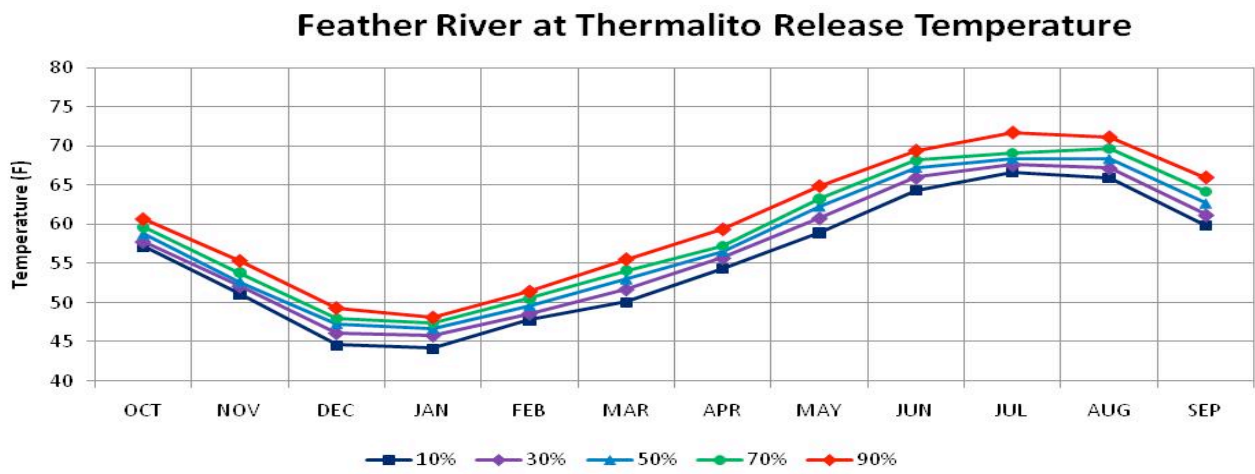
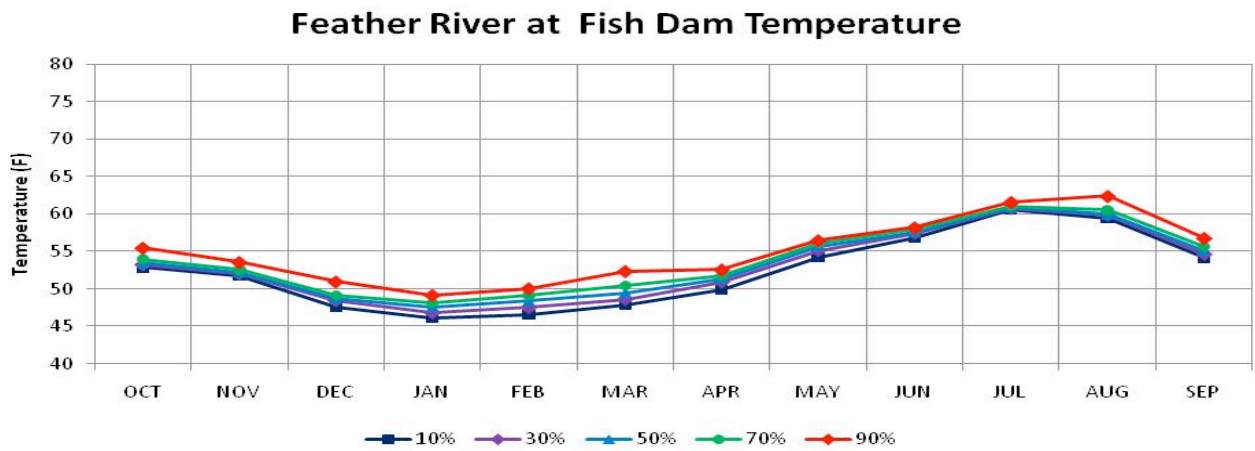
Appendix 29C-9b
Shasta Reservoir Storage (taf) and Sacramento River at Bend Bridge
Temperature (F) in October
for the Six BDCP Cases for WY 1922-2003



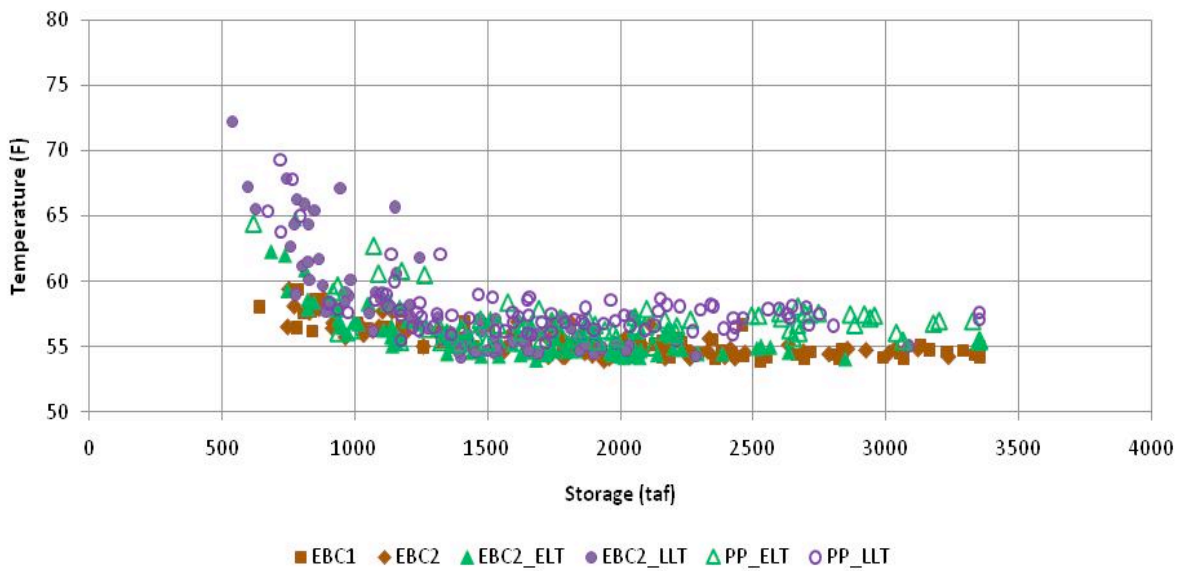
Appendix 29C-10a
Shasta Reservoir Storage (taf) and Keswick
Release Temperature (F) in November
for the Six BDCP Cases for WY 1922-2003



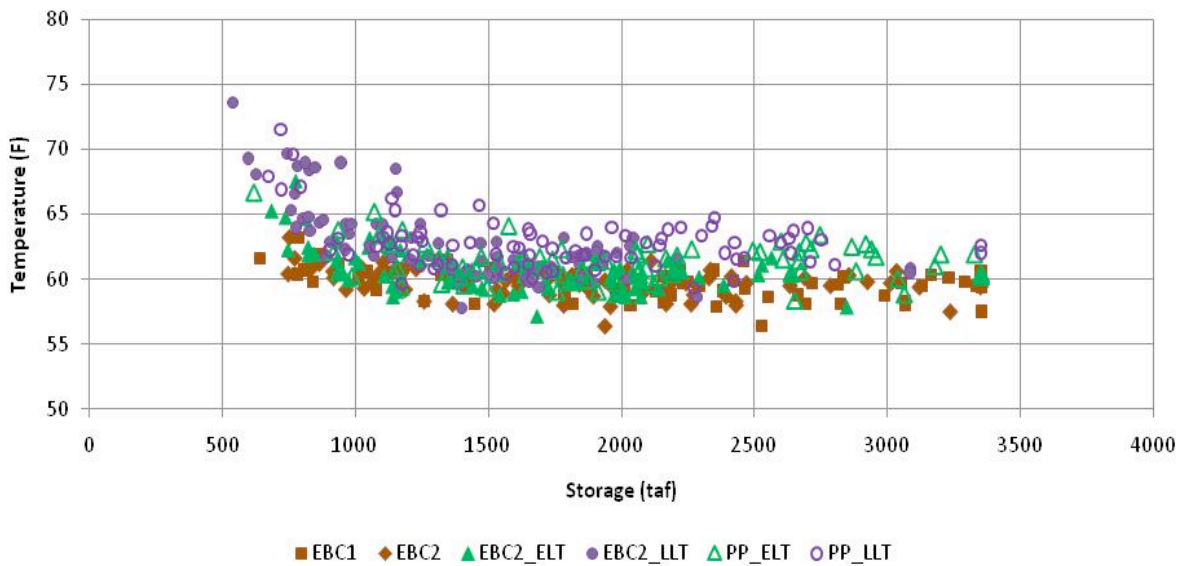
Appendix 29C-10b
Shasta Reservoir Storage (taf) and Sacramento River at Bend Bridge
Temperature (F) in November
for the Six BDCP Cases for WY 1922-2003



Appendix 29C-11
USBR Temperature Model Monthly Temperature Ranges for Feather River
Temperatures at Fish Dam, Thermalito Afterbay Reservoir Release, and Gridley
for WY 1922-2003 for EBC2

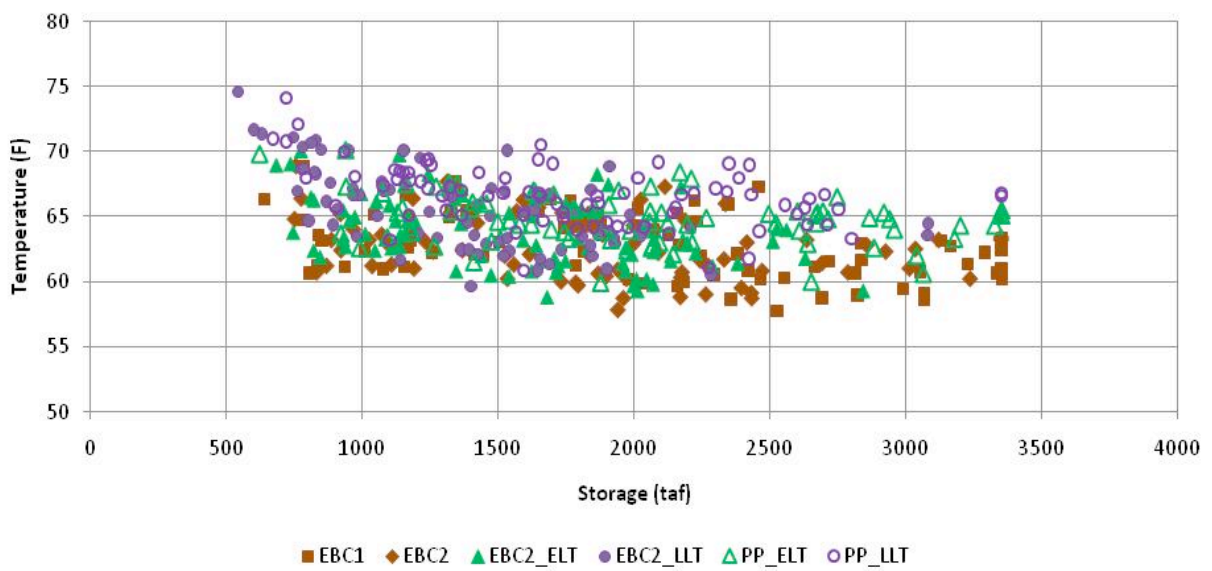


Appendix 29C-12a
Oroville Reservoir Storage (taf) and Fish Dam
Temperature (F) in September
for the Six BDCP Cases for WY 1922-2003

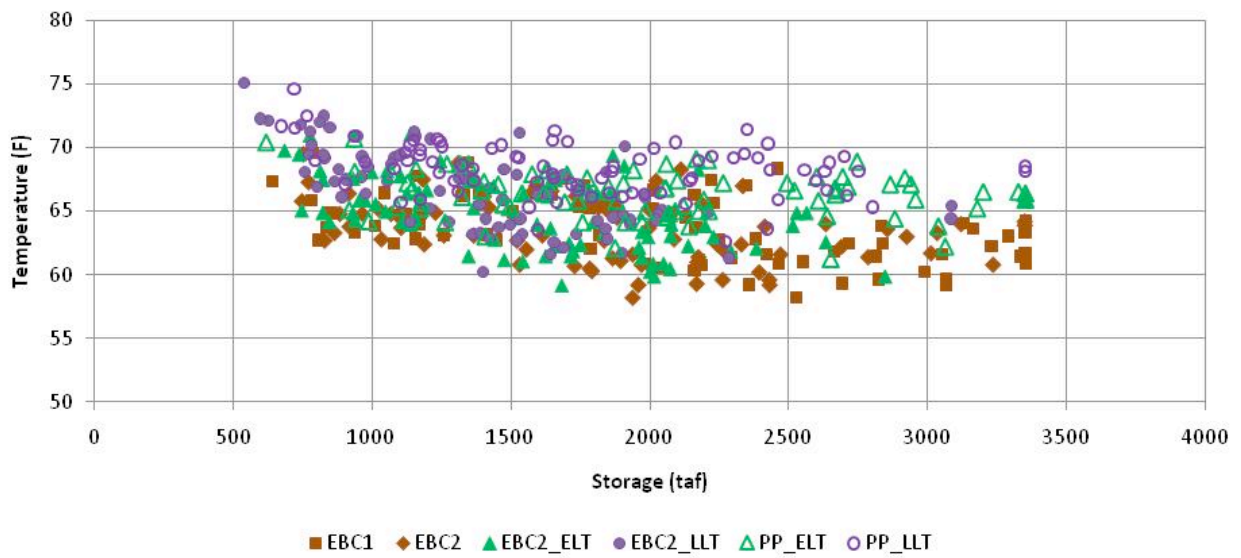


Appendix 29C-12b

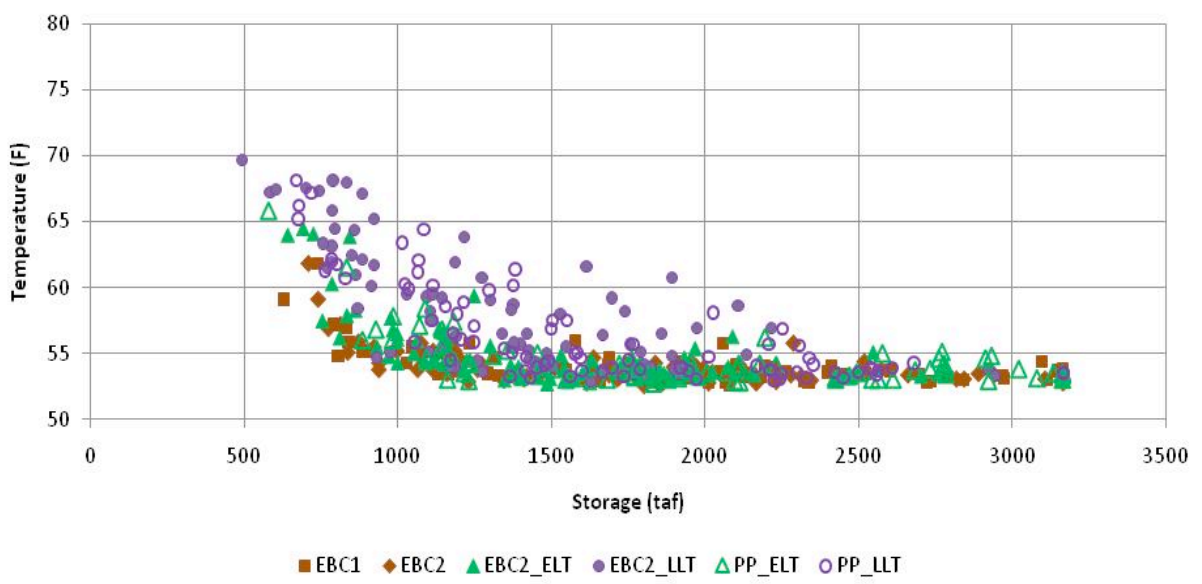
Oroville Reservoir Storage (taf) and Feather River Upstream of Thermalito Afterbay Release (Robinson Riffle) Temperature (F) in September for the Six BDCP Cases for WY 1922-2003



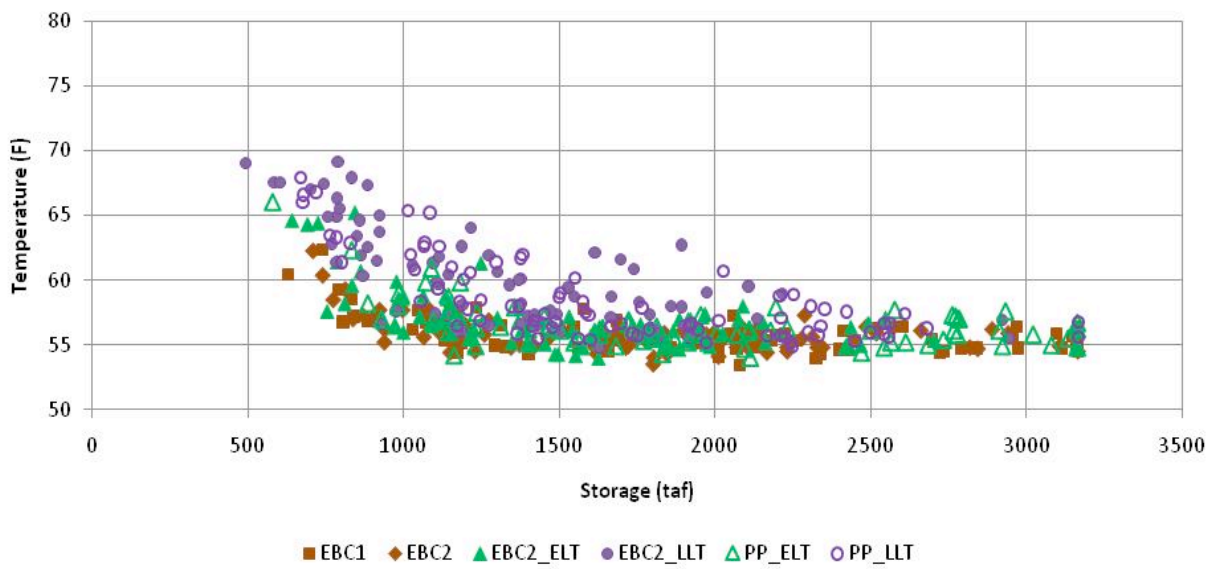
Appendix 29C-12c
Oroville Reservoir Storage (taf) and Feather River Downstream of
Thermalito Afterbay Release Temperature (F) in September
for the Six BDCP Cases for WY 1922-2003



Appendix 29C-12d
Oroville Reservoir Storage (taf) and Feather River at Gridley
Temperature (F) in September
for the Six BDCP Cases for WY 1922-2003

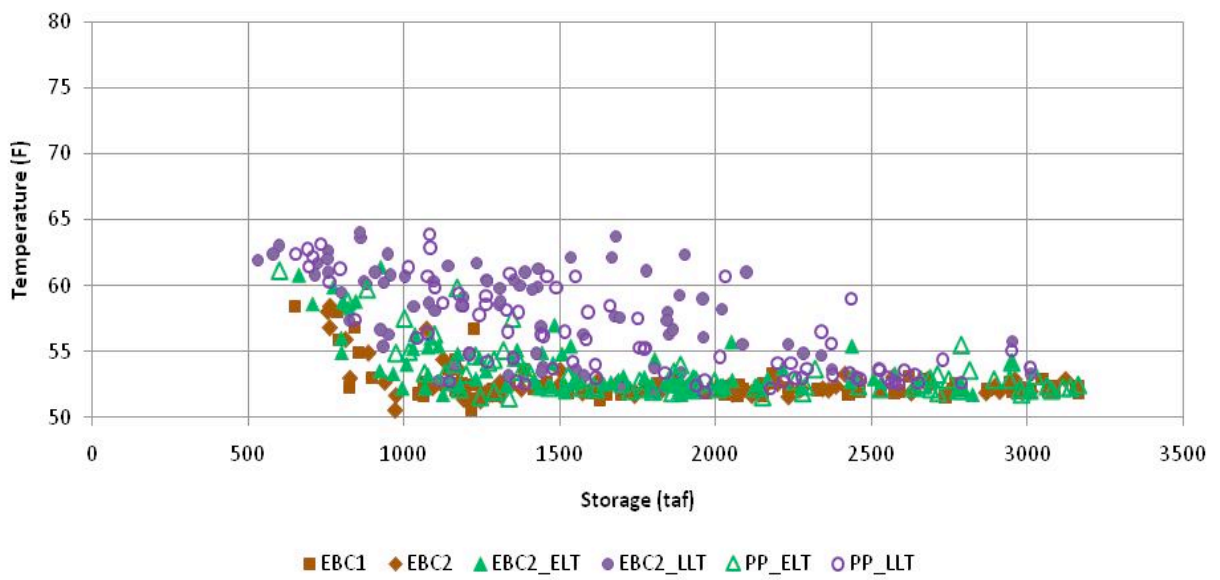


Appendix 29C-13a
Oroville Reservoir Storage (taf) and Fish Dam
Temperature (F) in October
for the Six BDCP Cases for WY 1922-2003

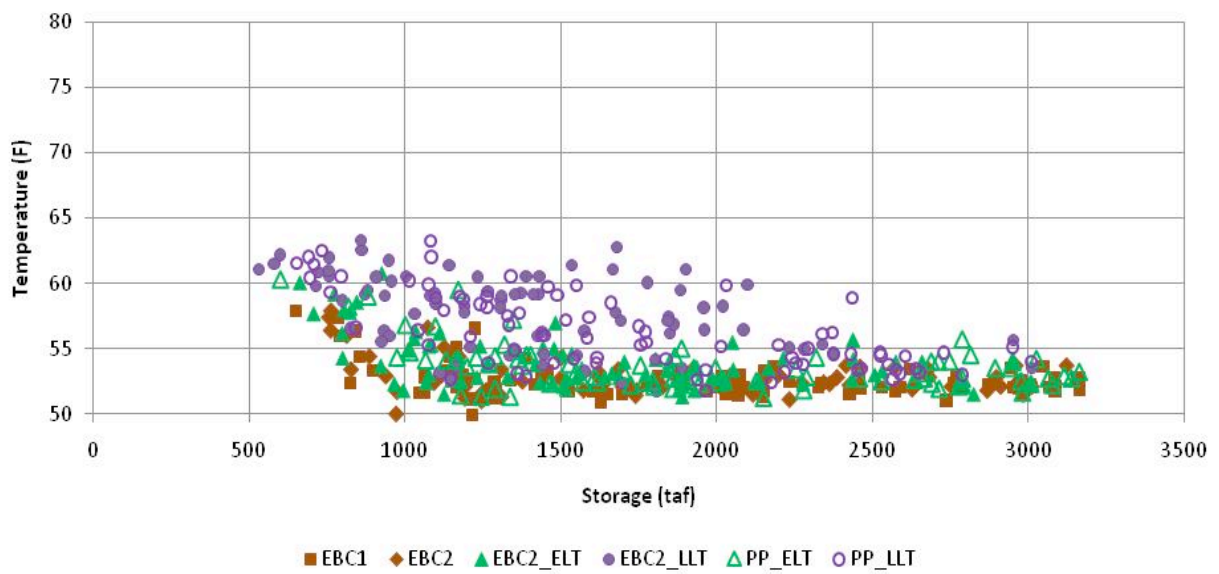


Appendix 29C-13b

**Oroville Reservoir Storage (taf) and Feather River Upstream of Thermalito Afterbay
Release (Robinson Riffle) Temperature (F) in October
for the Six BDCP Cases for WY 1922-2003**

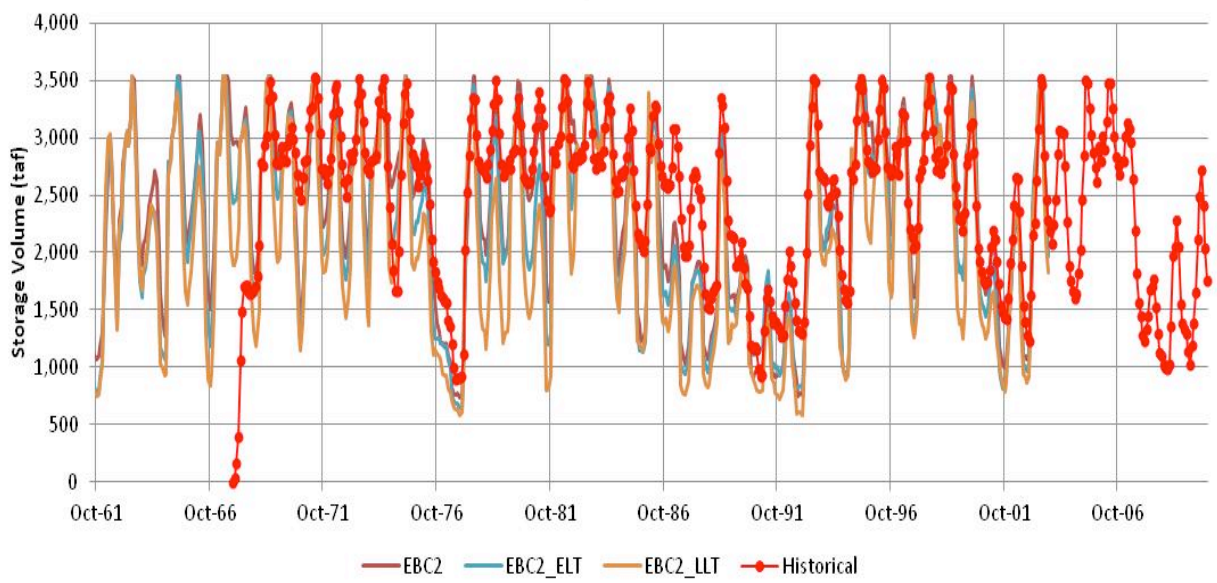


Appendix 29C-14a
Oroville Reservoir Storage (taf) and Fish Dam
Temperature (F) in November
for the Six BDCP Cases for WY 1922-2003

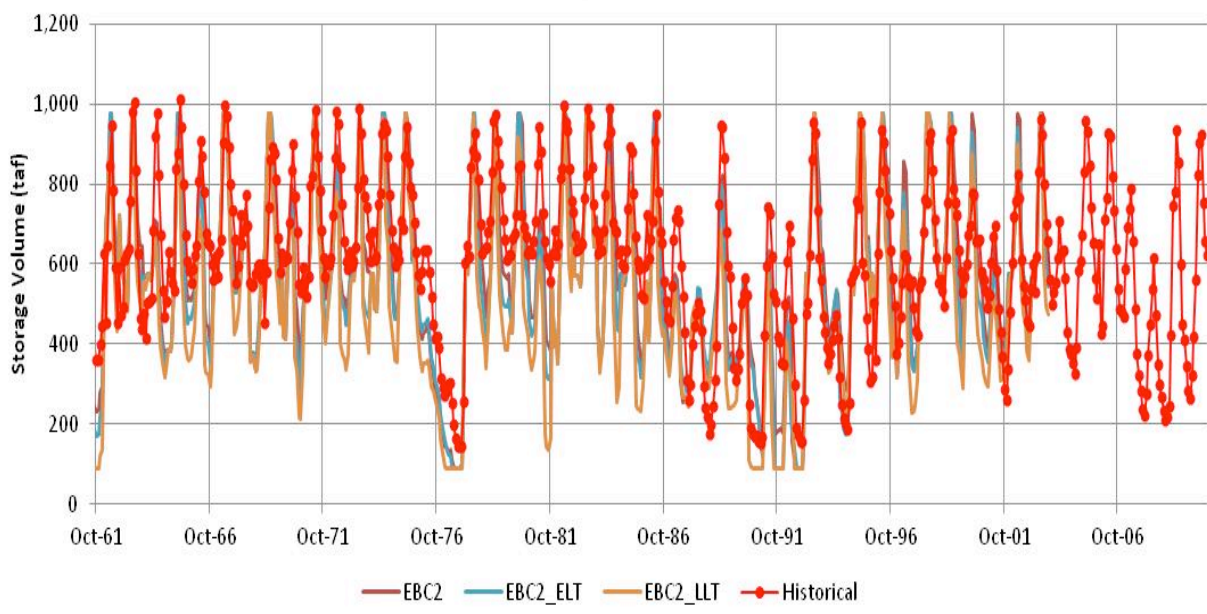


Appendix 29C-14b

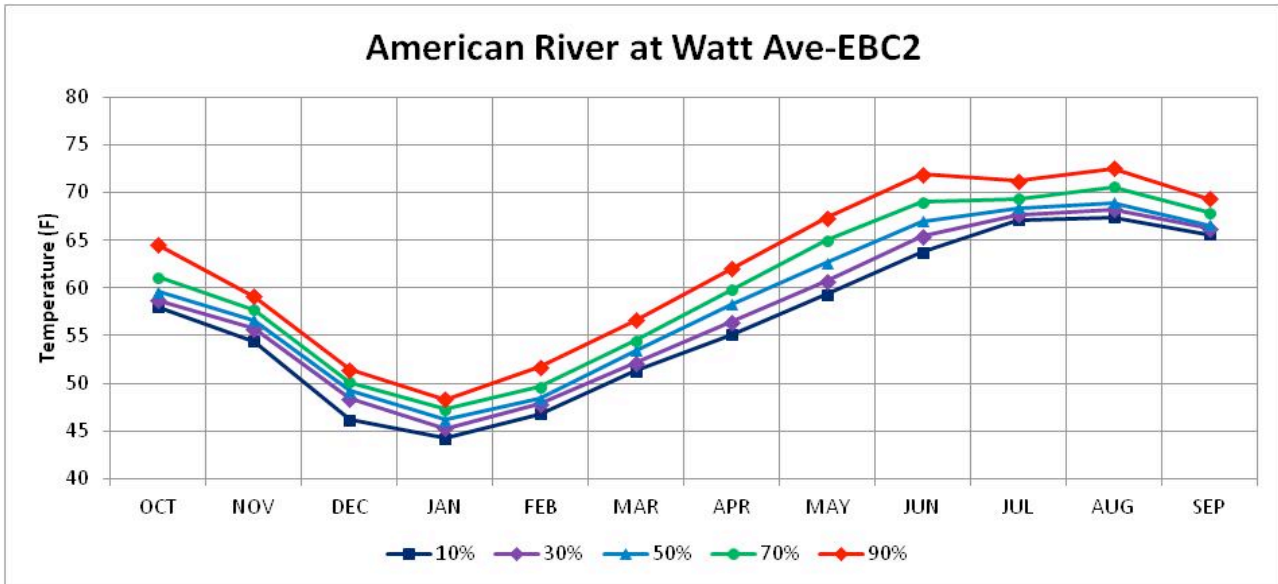
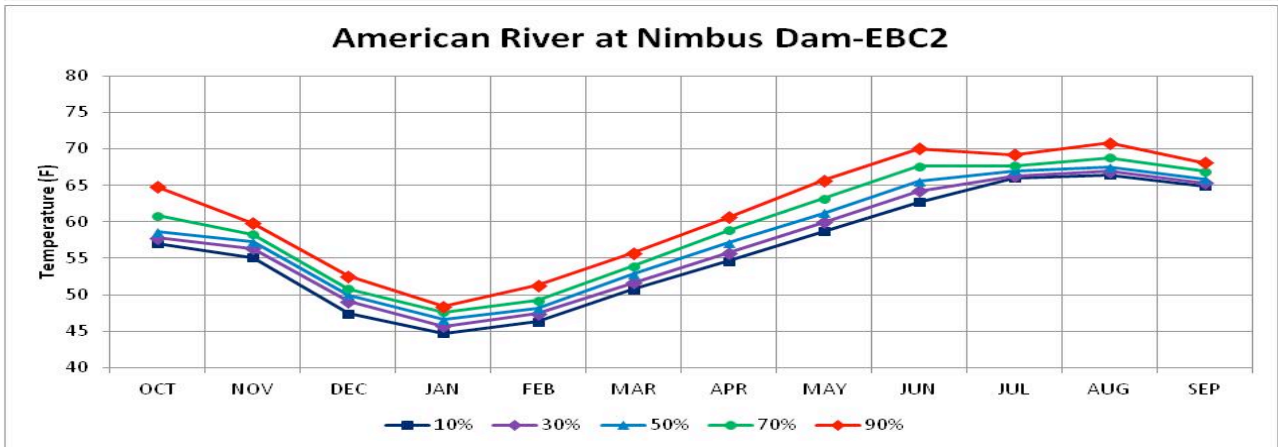
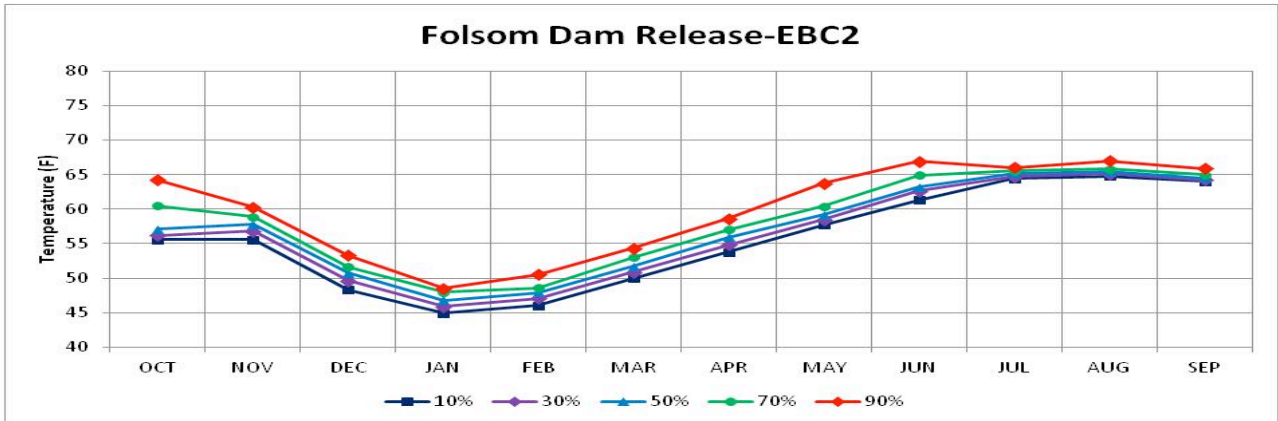
Oroville Reservoir Storage (taf) and Feather River Upstream of Thermalito Afterbay Release (Robinson Riffle) Temperature (F) in November for the Six BDCP Cases for WY 1922-2003



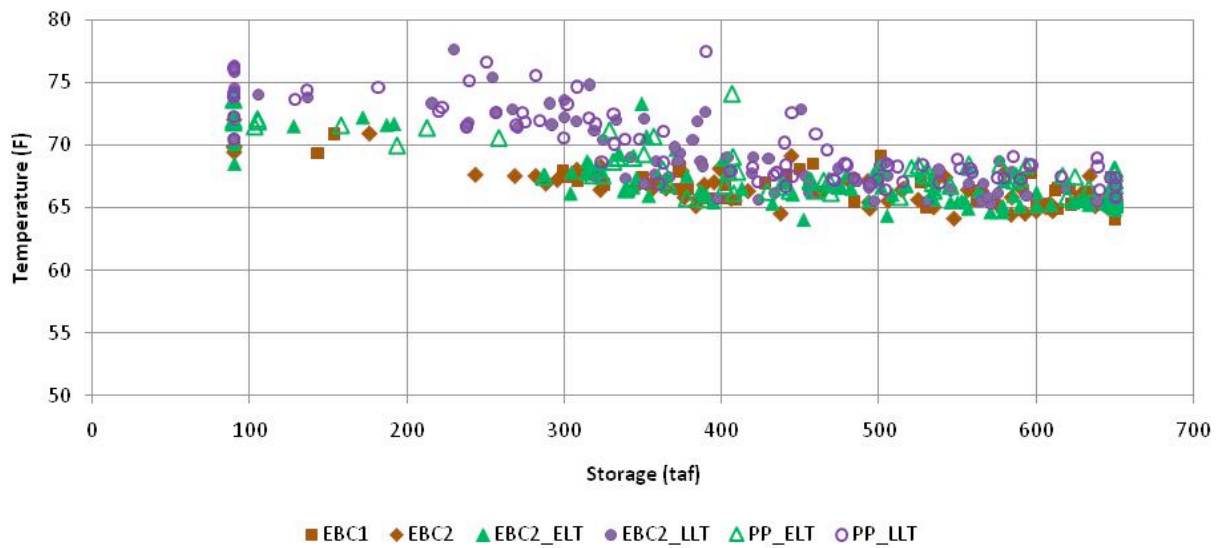
**Appendix 29C-15a
 Historical and CALSIM-Simulated
 Oroville Reservoir Storage
 for WY 1961-2010**



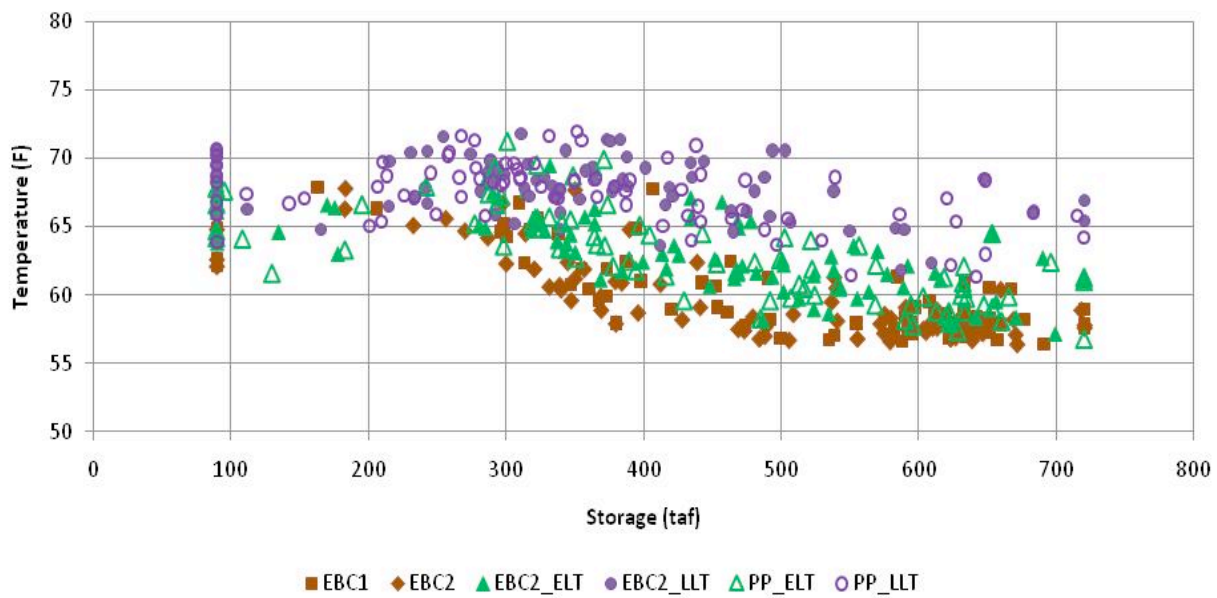
**Appendix 29C-15b
 Historical and CALSIM-Simulated
 Folsom Reservoir Storage
 for WY 1961-2010**



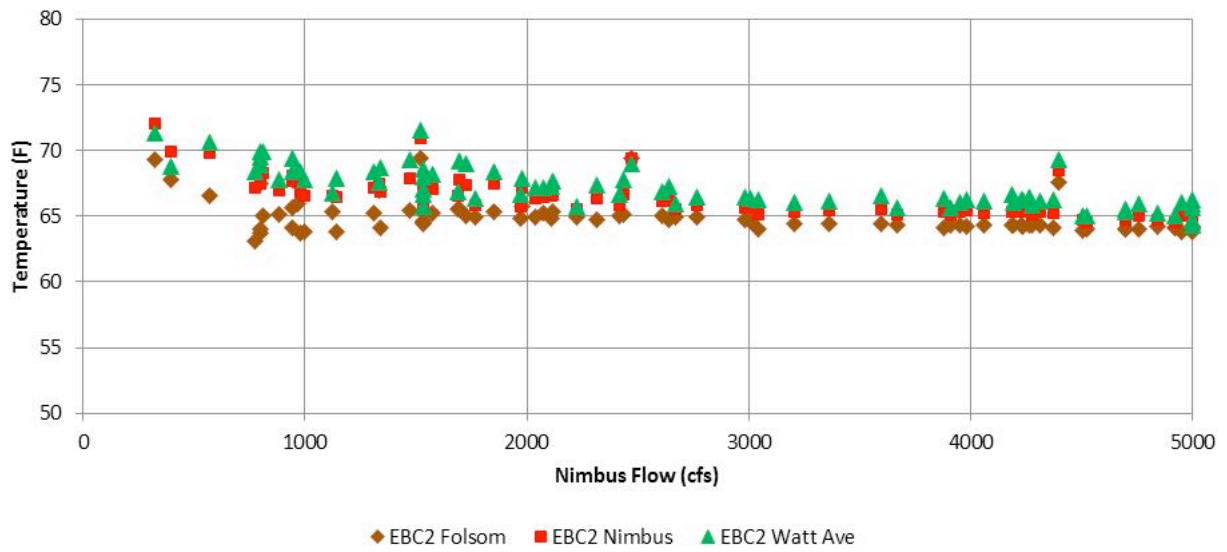
Appendix 29C-16
USBR Temperature Model Monthly Temperature Ranges for American River
Temperatures at Folsom Dam, Nimbus Dam Release, and Watt Avenue Bridge
for WY 1922-2003 for EBC2



Appendix 29C-17a
Folsom Reservoir Storage (taf) and Nimbus Dam
Temperature (F) in September
for the Six BDCP Cases for WY 1922-2003

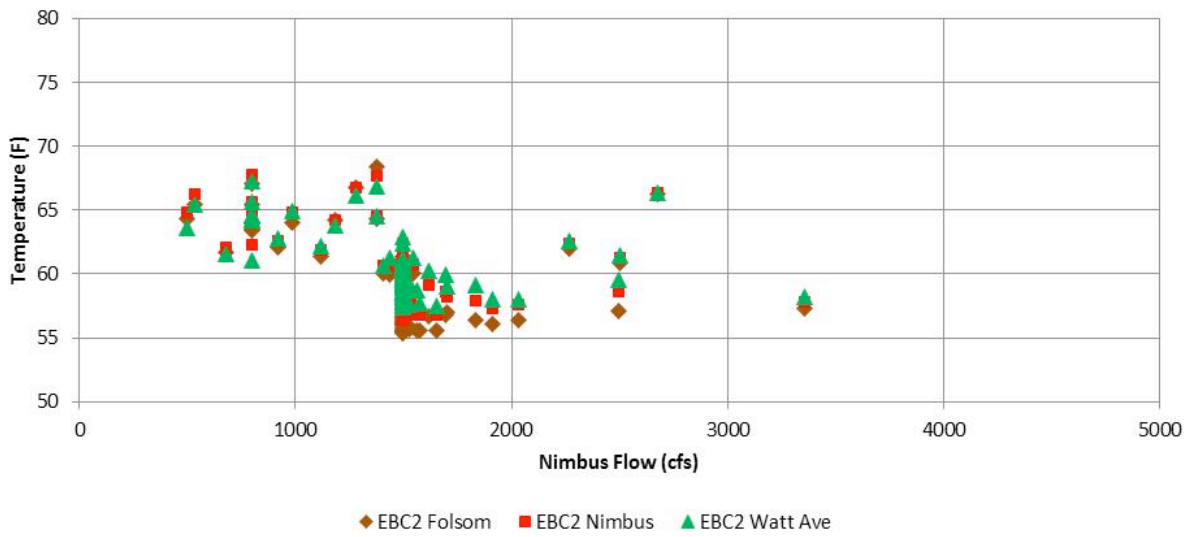


Appendix 29C-17b
Folsom Reservoir Storage (taf) and Nimbus Dam
Temperature (F) in October
for the Six BDCP Cases for WY 1922-2003



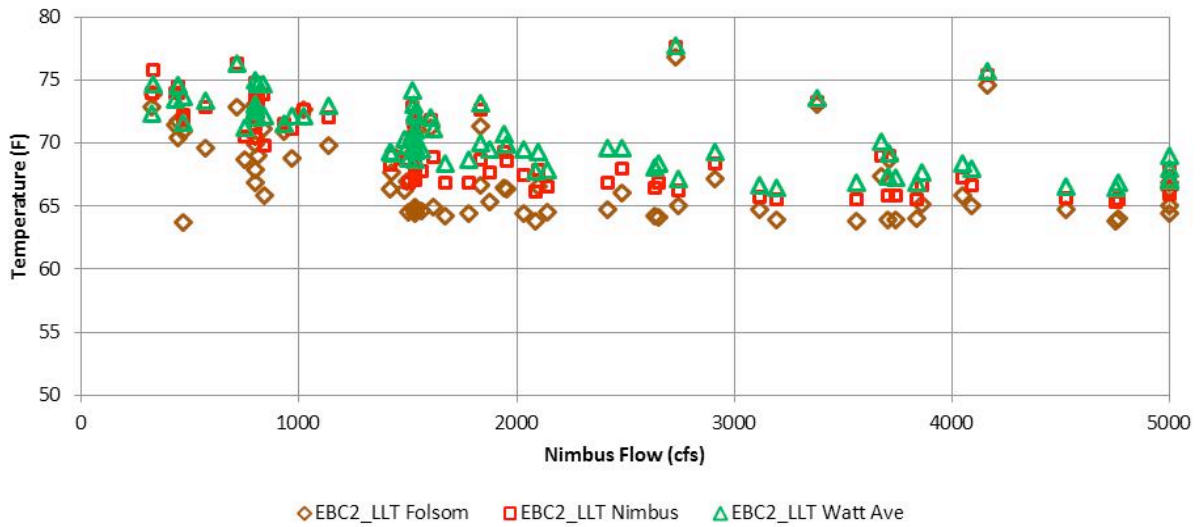
Appendix 29C-18a

American River at Nimbus Flow (cfs) and American River Temperatures (F) at Folsom Dam, Nimbus Dam, and Watt Avenue Bridge in September for the EBC2 Case for WY 1922-2003

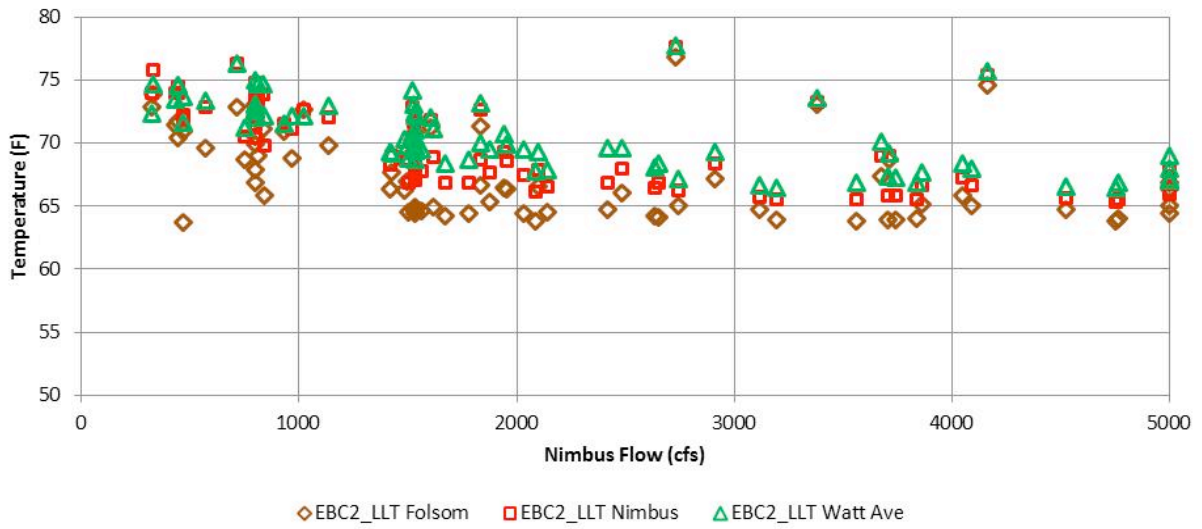


Appendix_29c (September 13, 2013 11:10 AM) 55

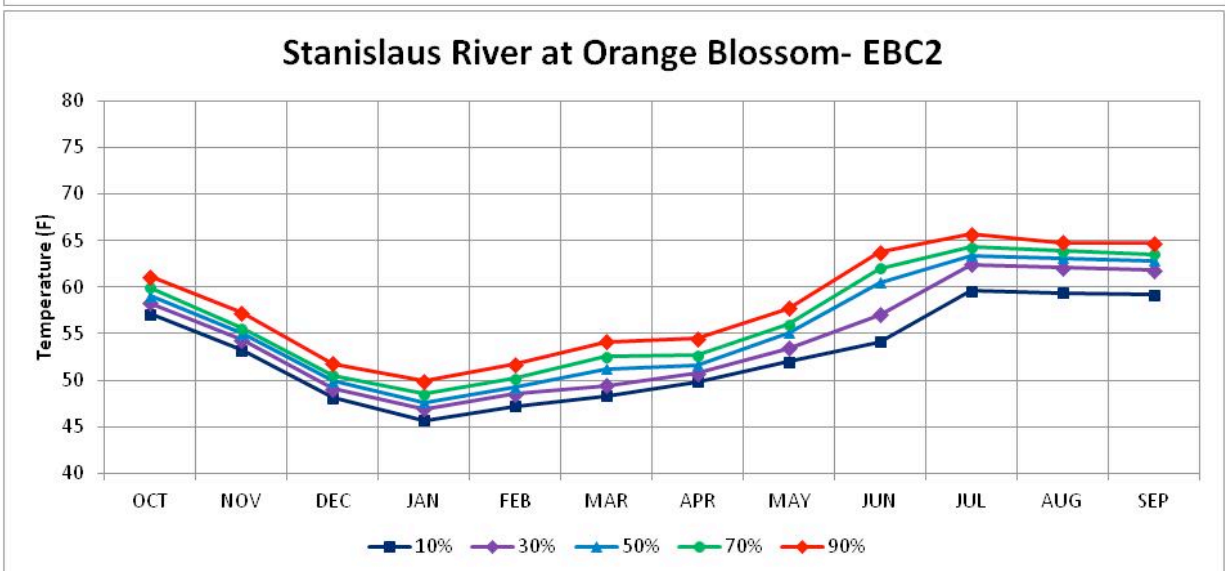
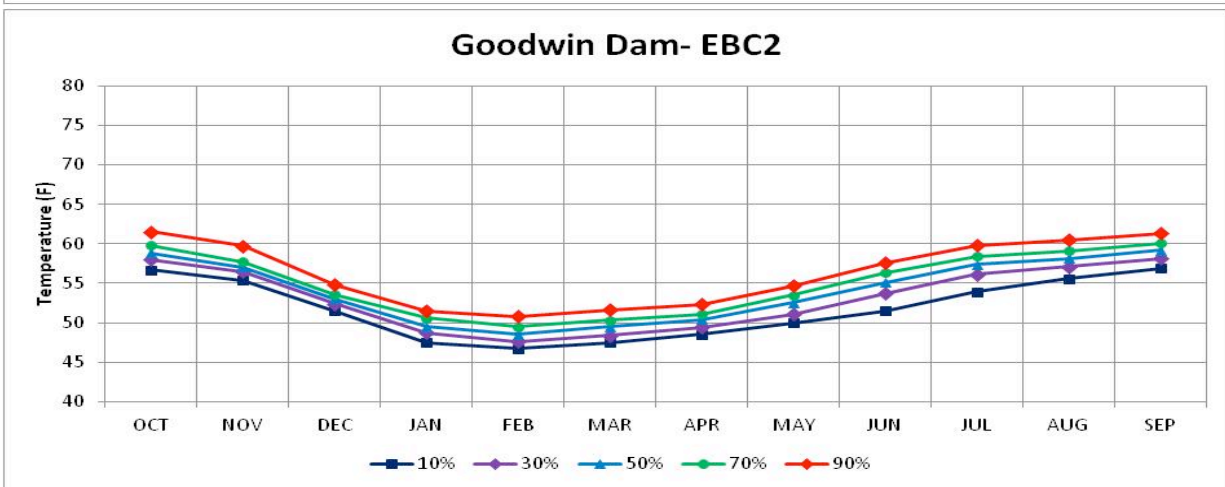
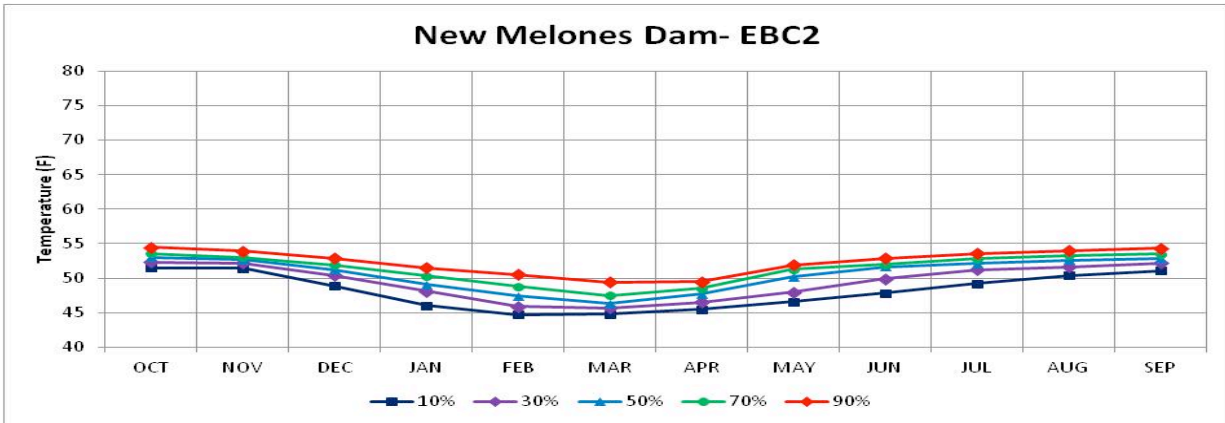
Appendix 29C-18b
American River at Nimbus Flow (cfs) and American River Temperatures (F) at Folsom Dam, Nimbus Dam, and Watt Avenue Bridge in October for the EBC2 Case for WY 1922-2003



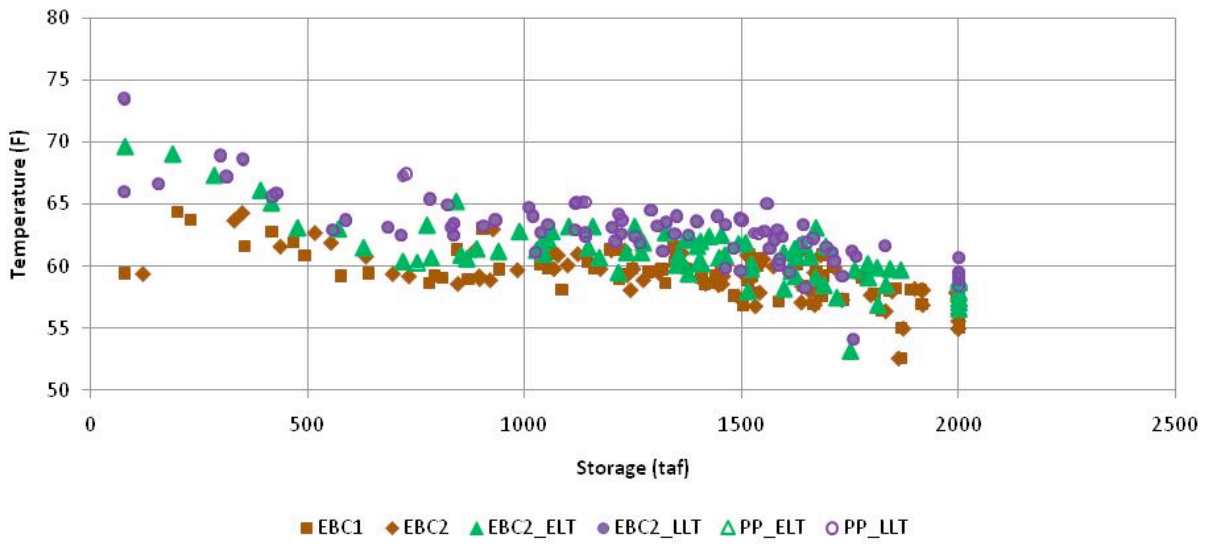
**Appendix 29C-19a
 American River at Nimbus Flow (cfs) and American River
 Temperatures (F) at Folsom Dam, Nimbus Dam, and Watt Avenue Bridge
 in September for the EBC2_LLT Case for WY 1922-2003**



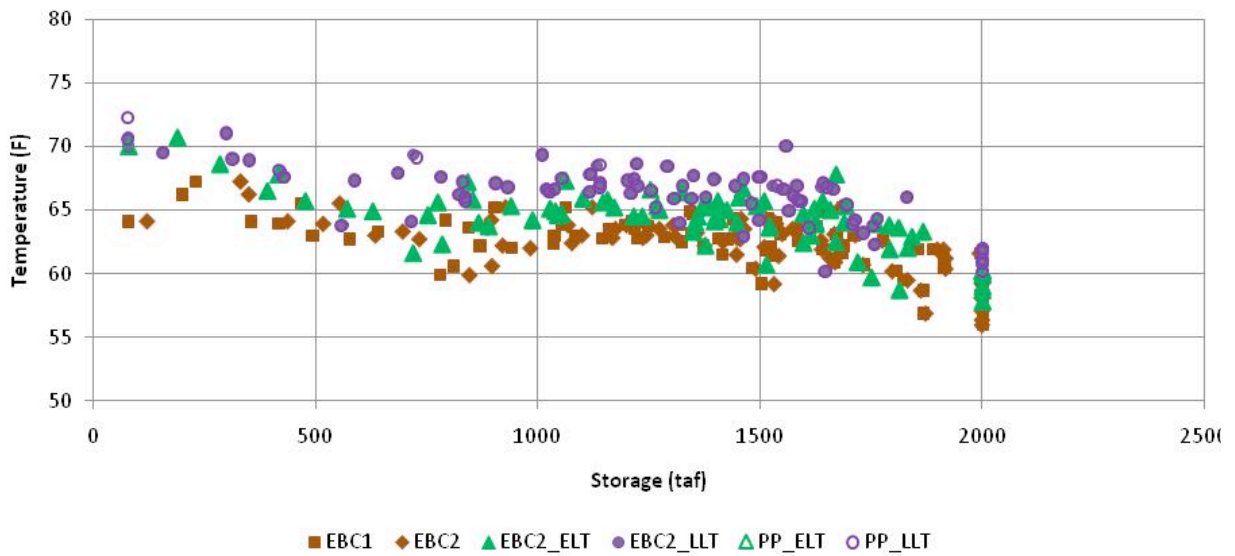
Appendix 29C-19b
American River at Nimbus Flow (cfs) and American River
Temperatures (F) at Folsom Dam, Nimbus Dam, and Watt Avenue Bridge
in October for the EBC2_LLT Case for WY 1922-2003



**Appendix 29C-20
USBR Temperature Model Monthly Temperature Ranges for Stanislaus River
Temperatures at New Melones Dam, Goodwin Dam, and Orange Blossom
for WY 1922-2003 for EBC2**

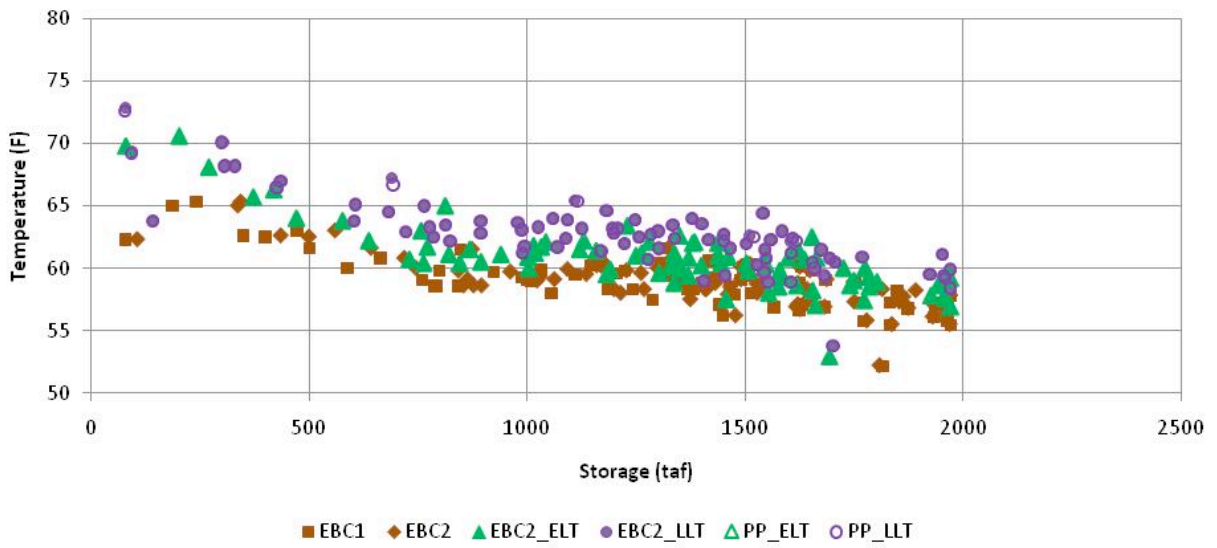


**Appendix 29C-21a
 New Melones Reservoir Storage (taf) and Goodwin Dam
 Temperature (F) in September
 for the Six BDCP Cases for WY 1922-2003**

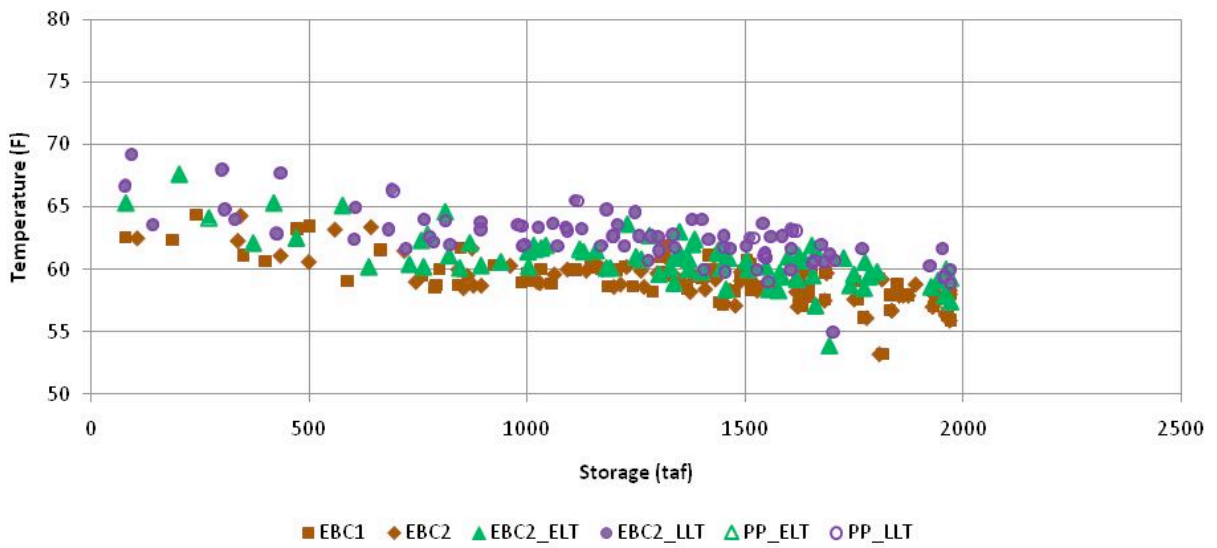


Appendix 29C-21b

**New Melones Reservoir Storage (taf) and Stanislaus River at Orange Blossom
Temperature (F) in September
for the Six BDCP Cases for WY 1922-2003**

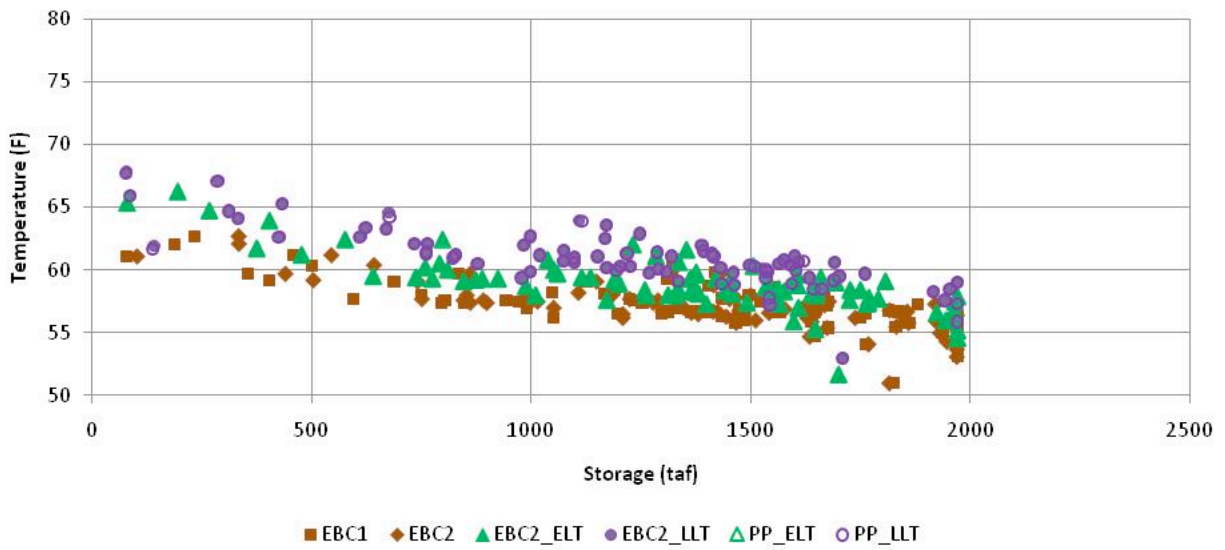


Appendix 29C-22a
New Melones Reservoir Storage (taf) and Goodwin Dam
Temperature (F) in October
for the Six BDCP Cases for WY 1922-2003

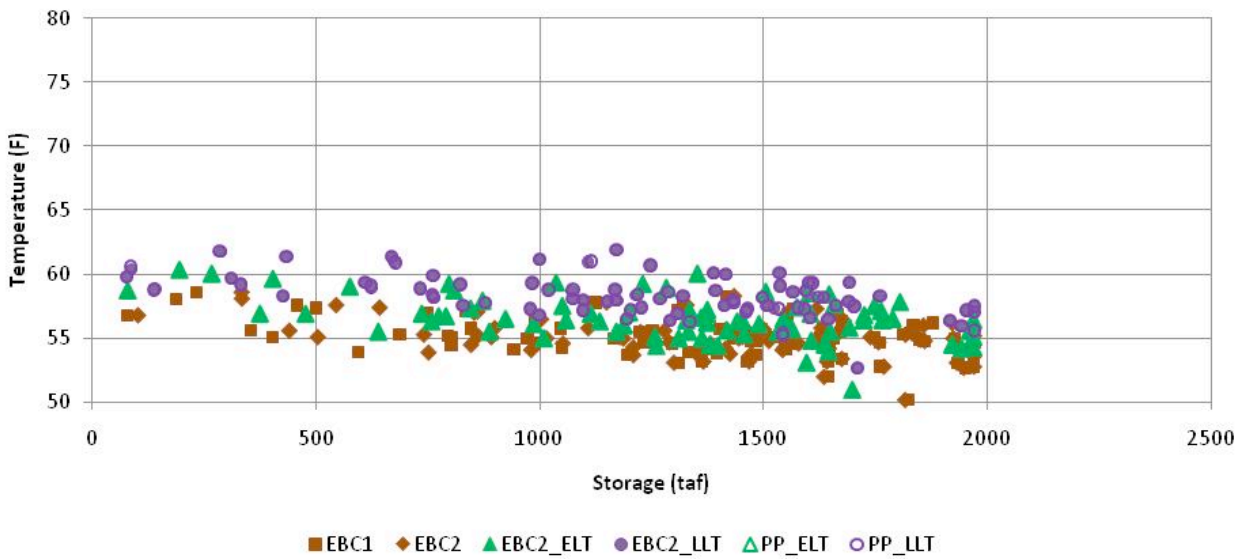


Appendix 29C-22b

**New Melones Reservoir Storage (taf) and Stanislaus River at Orange Blossom
Temperature (F) in October
for the Six BDCP Cases for WY 1922-2003**



Appendix 29C-23a
New Melones Reservoir Storage (taf) and Goodwin Dam
Temperature (F) in November
for the Six BDCP Cases for WY 1922-2003



Appendix 29C-23b
New Melones Reservoir Storage (taf) and Stanislaus River at Orange Blossom
Temperature (F) in November
for the Six BDCP Cases for WY 1922-2003