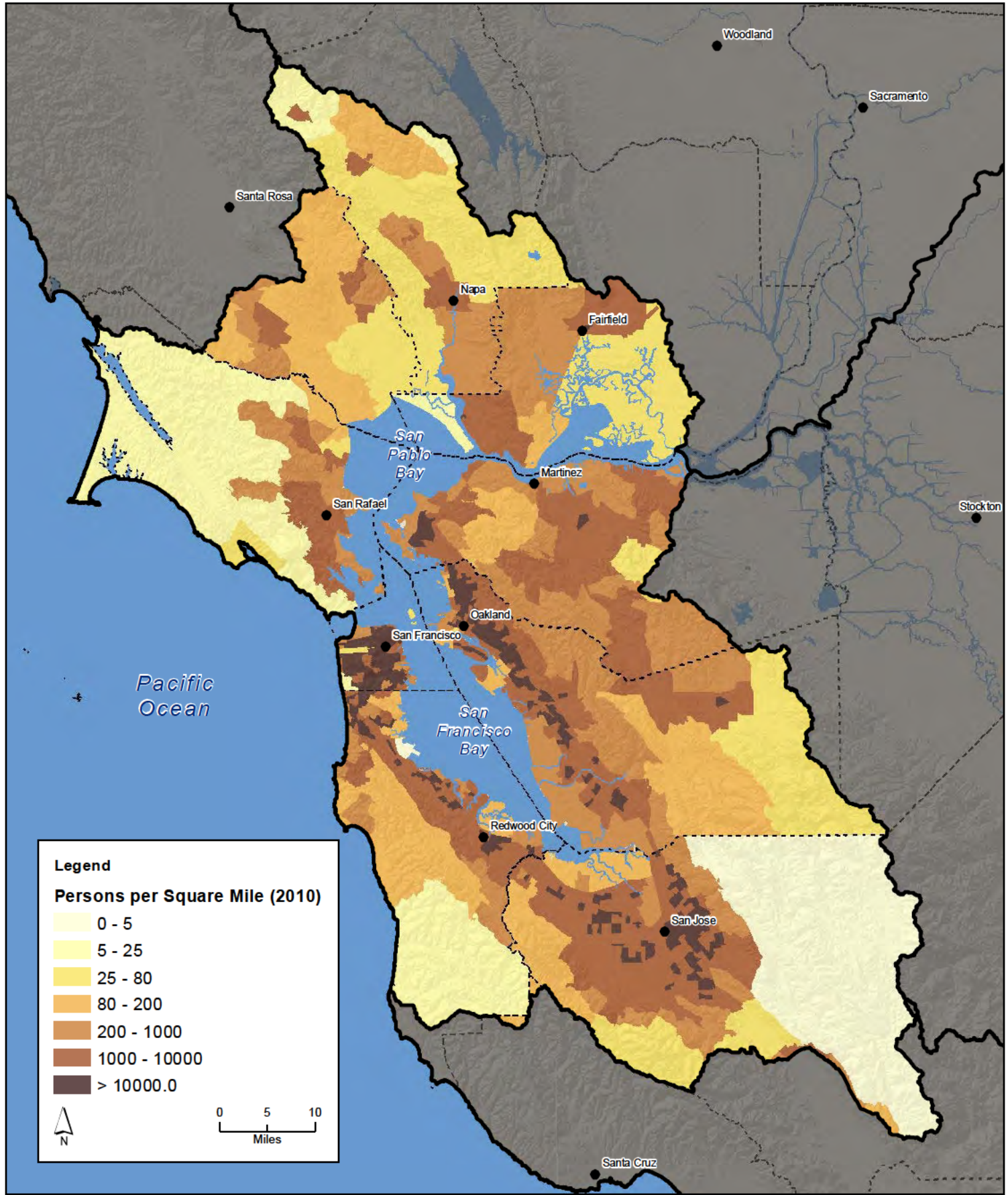
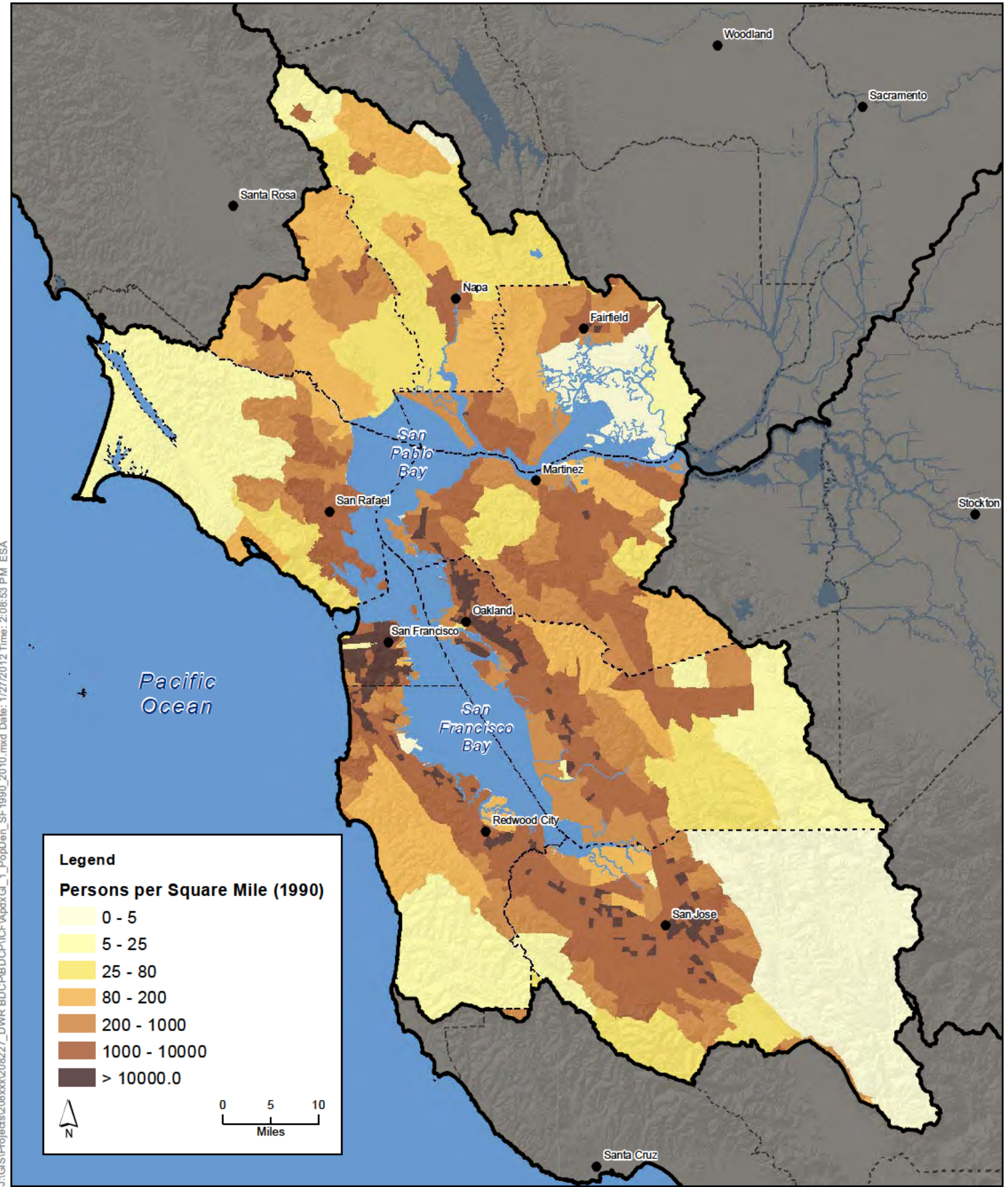


Appendix 30A

Population Density in Hydrologic Regions

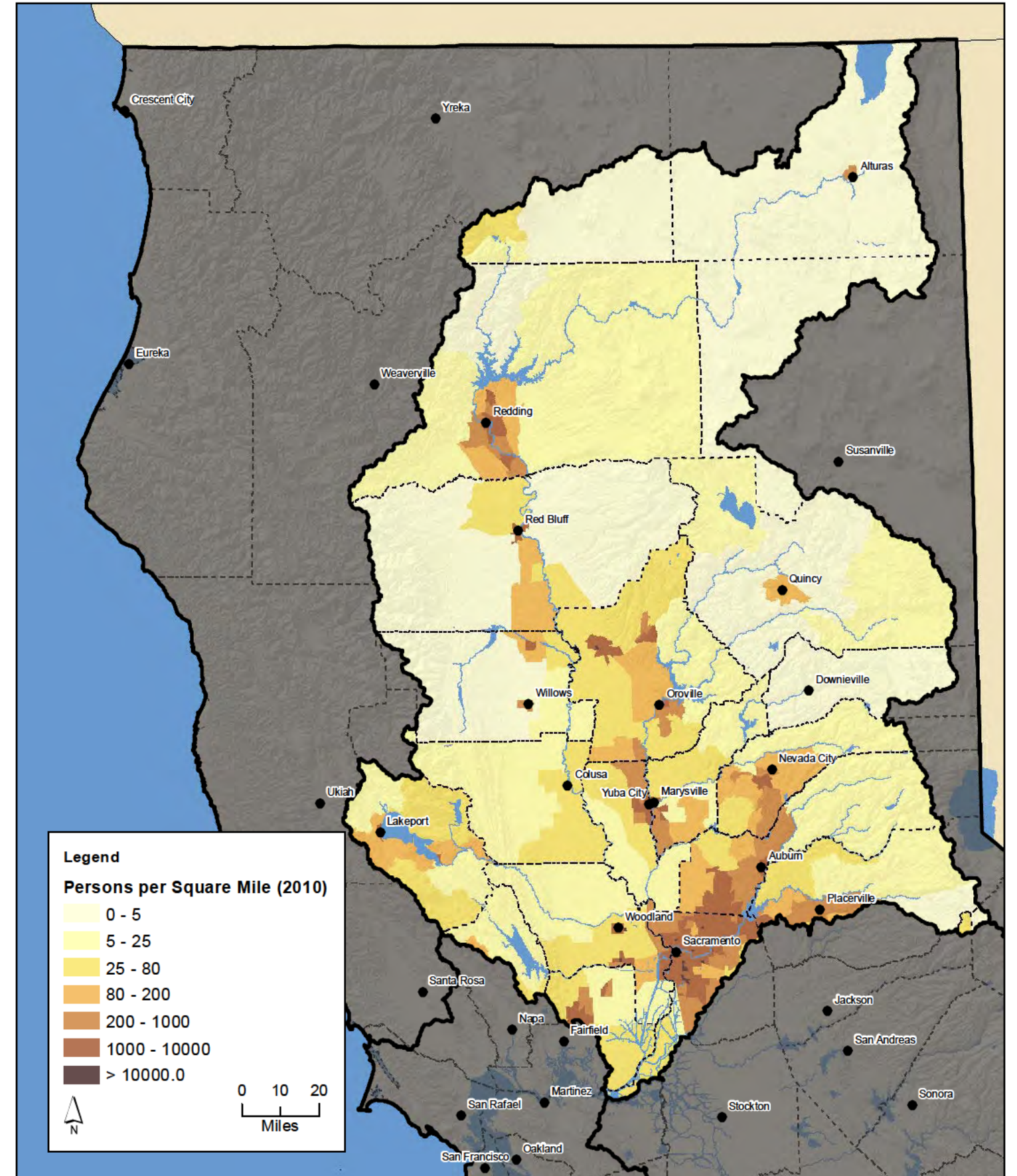
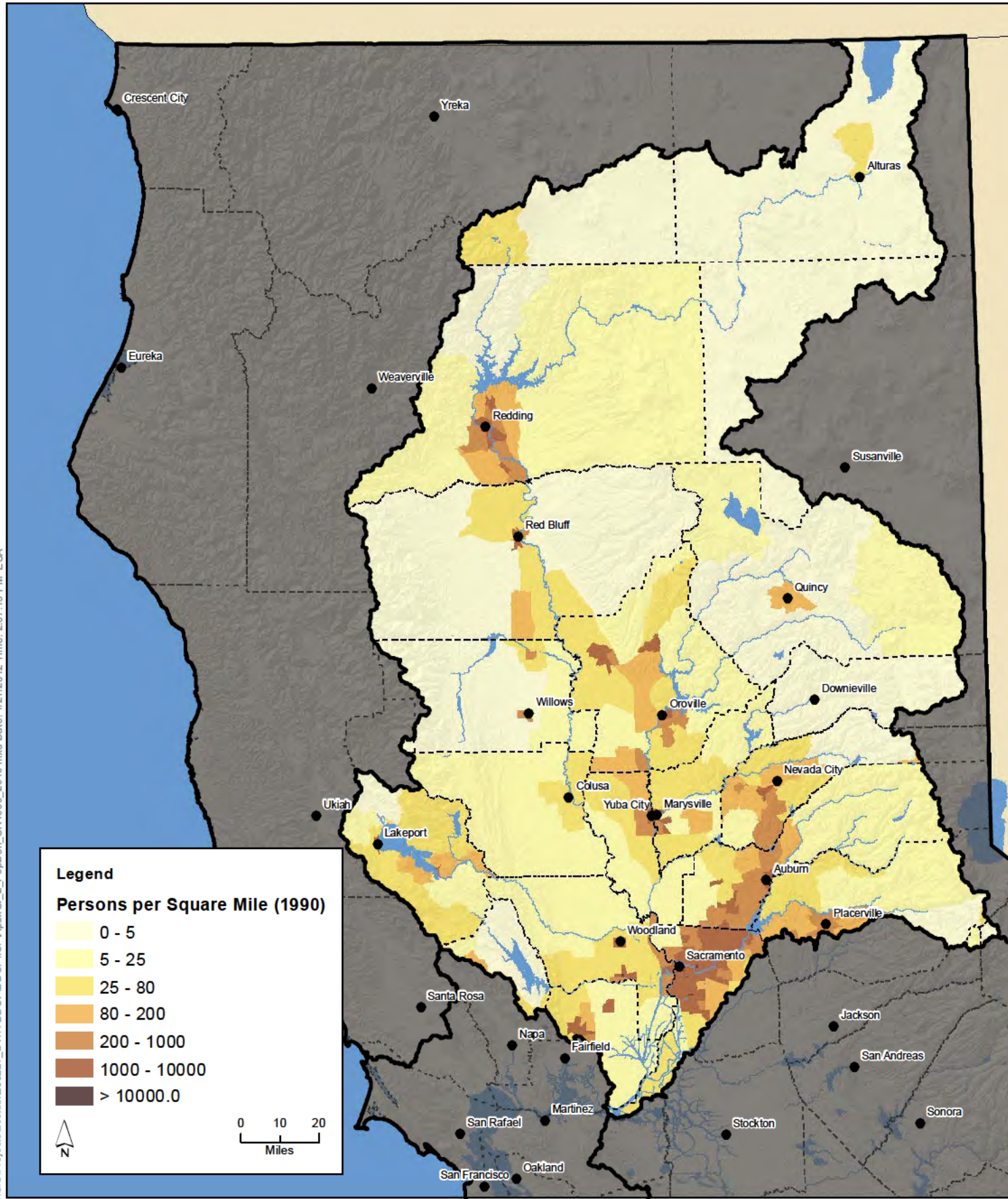


J:\GIS\Projects\208xxx\208227_DWR_BDCP\BDCP\ICF\ApdxGL_1_PopDen_SF1990_2010.mxd Date: 1/27/2012 Time: 2:08:53 PM ESA

Source: Hydrologic Regions, CAS L, 2004. Population Density 1990, U.S. Census Bureau, 1990. Population Density 2010, ESRI, 2011.

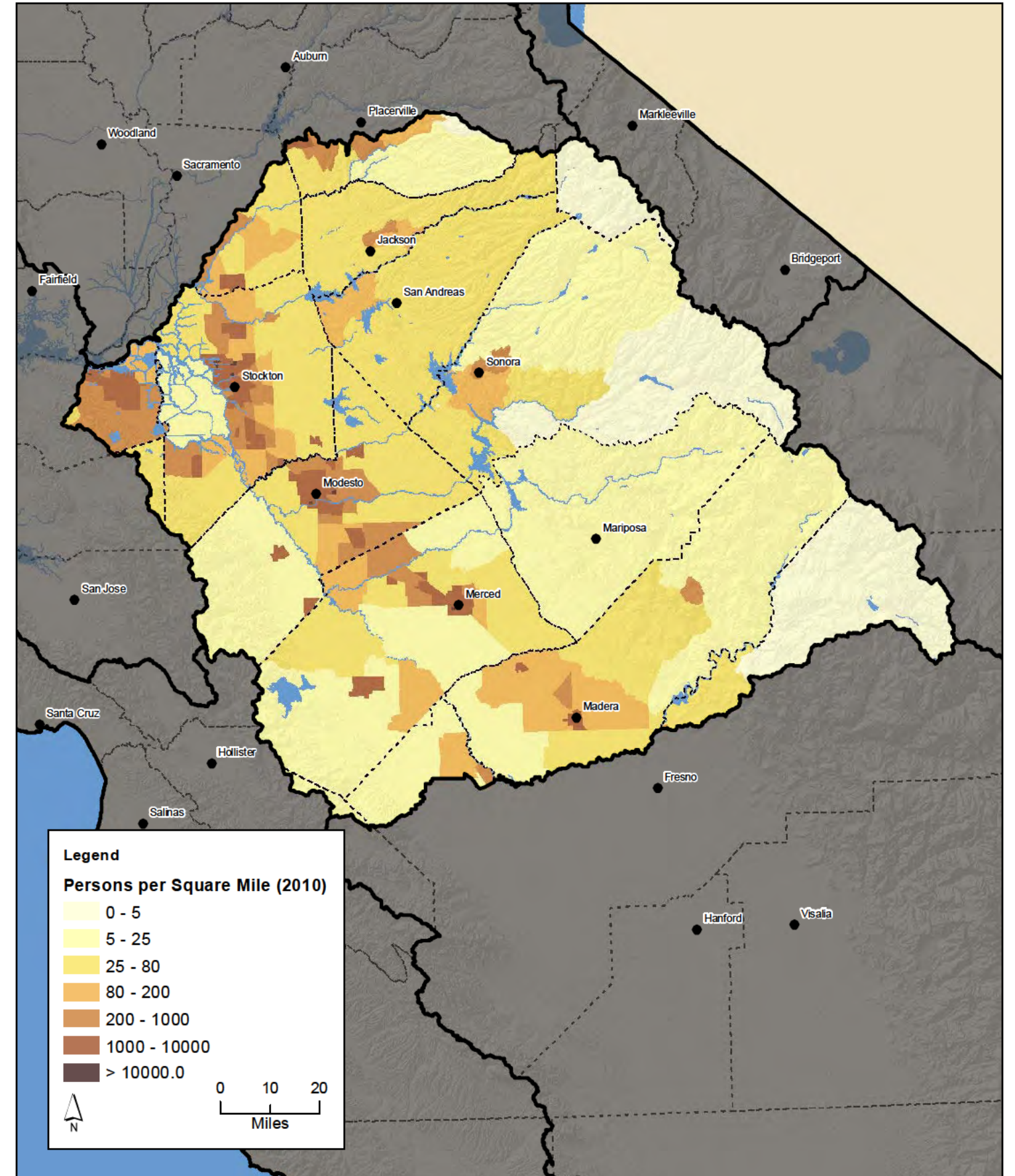
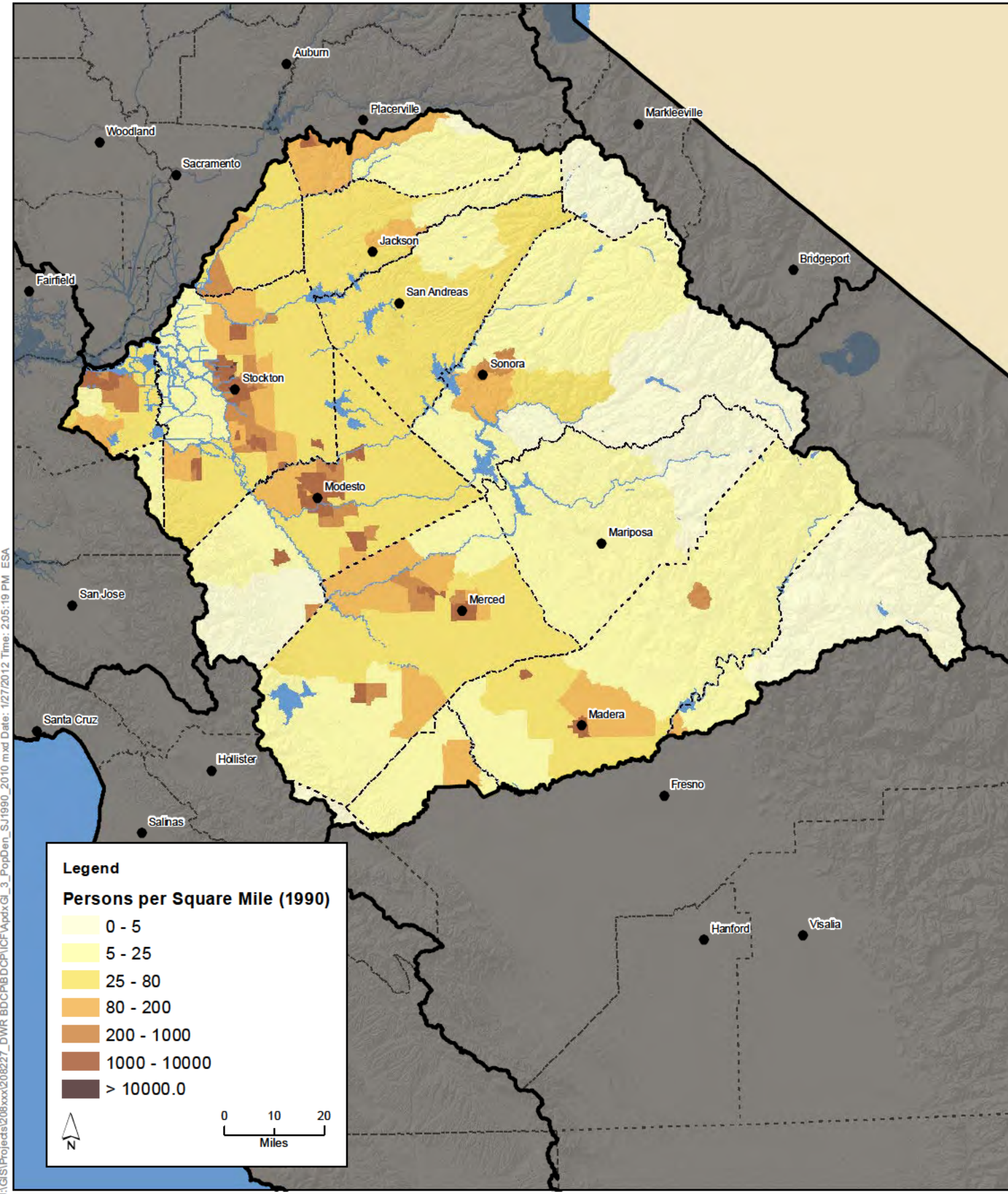
Figure 30A-1
Population Density in the San Francisco Bay Hydrologic Region 1990 & 2010

J:\GIS\Projects\208xxx\208227_DWR_BDCP\BDCP\ICF\Apdx_GI_2_PopDen_SR1990_2010.mxd Date: 1/27/2012 Time: 2:07:15 PM ESA



Source: Hydrologic Regions, CAS L, 2004. Population Density 1990, U.S. Census Bureau, 1990. Population Density 2010, ESRI, 2011.

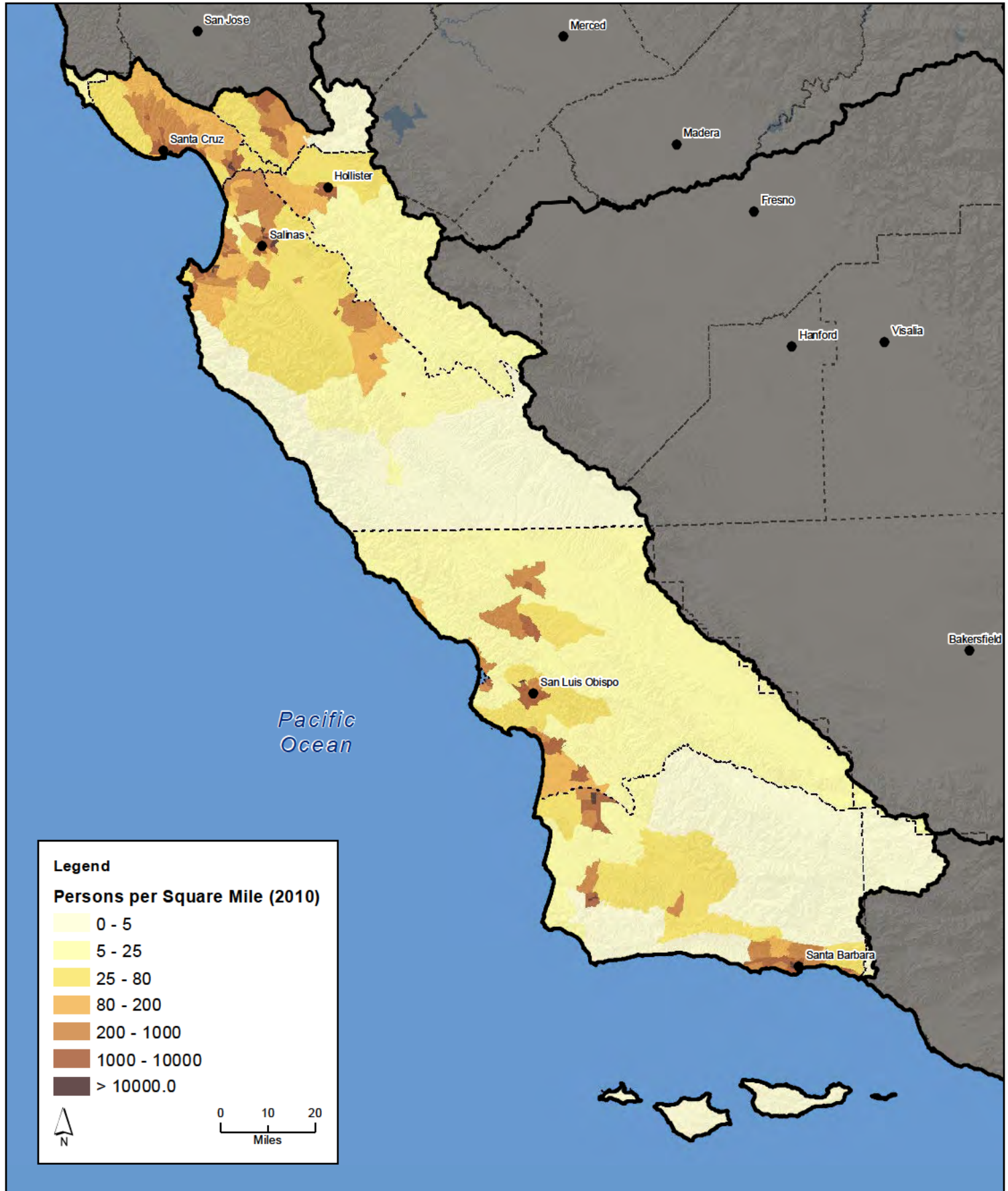
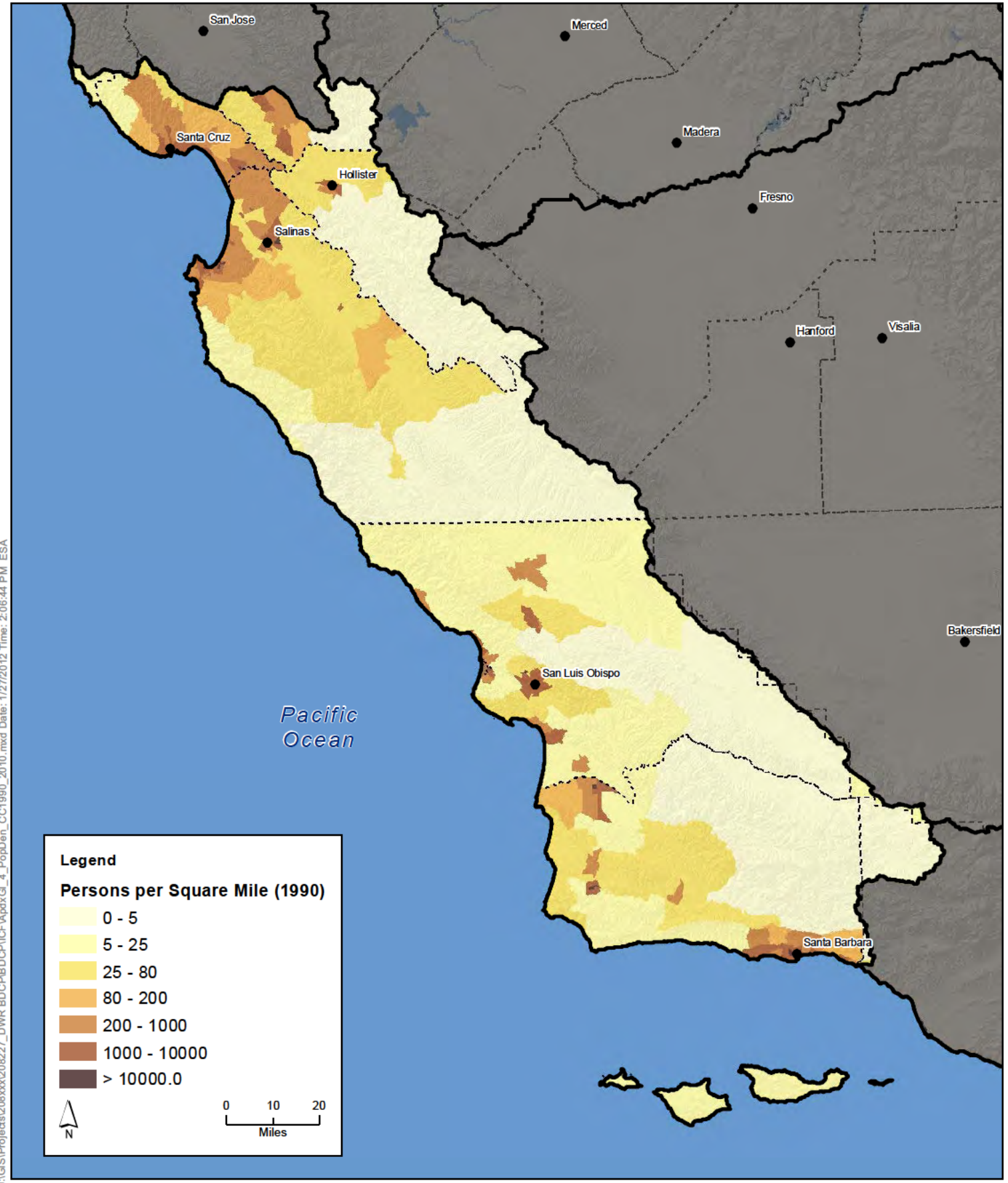
Figure 30A-2
Population Density in the Sacramento River Hydrologic Region 1990 & 2010



J:\GIS\Projects\208xxx\208227_DWR_BDCP\BDCP\ICF\ApdxGI_3_PopDen_SJ1990_2010.mxd Date: 1/27/2012 Time: 2:05:19 PM ESA

Source: Hydrologic Regions, CAS L, 2004. Population Density 1990, U.S. Census Bureau, 1990. Population Density 2010, ESRI, 2011.

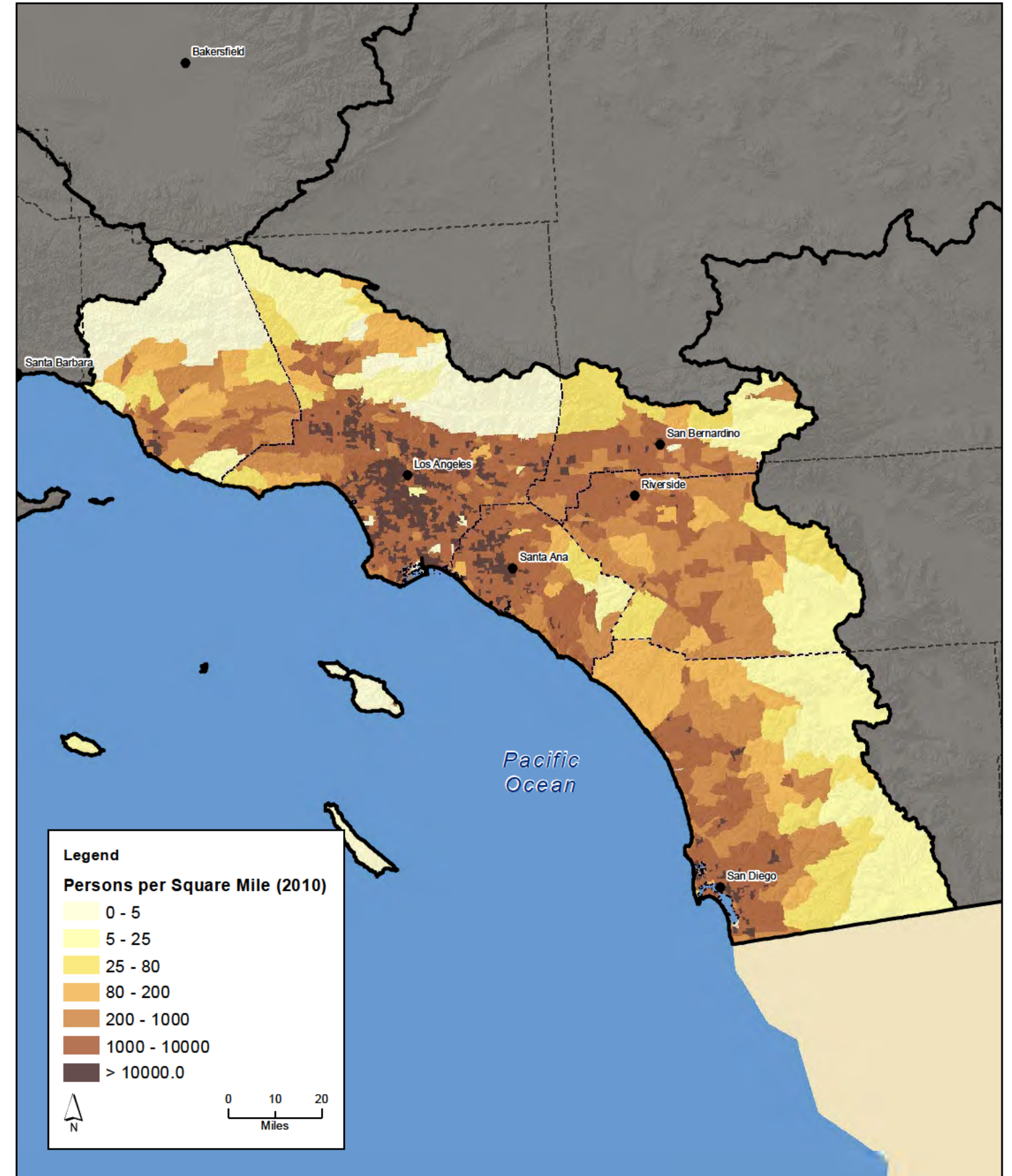
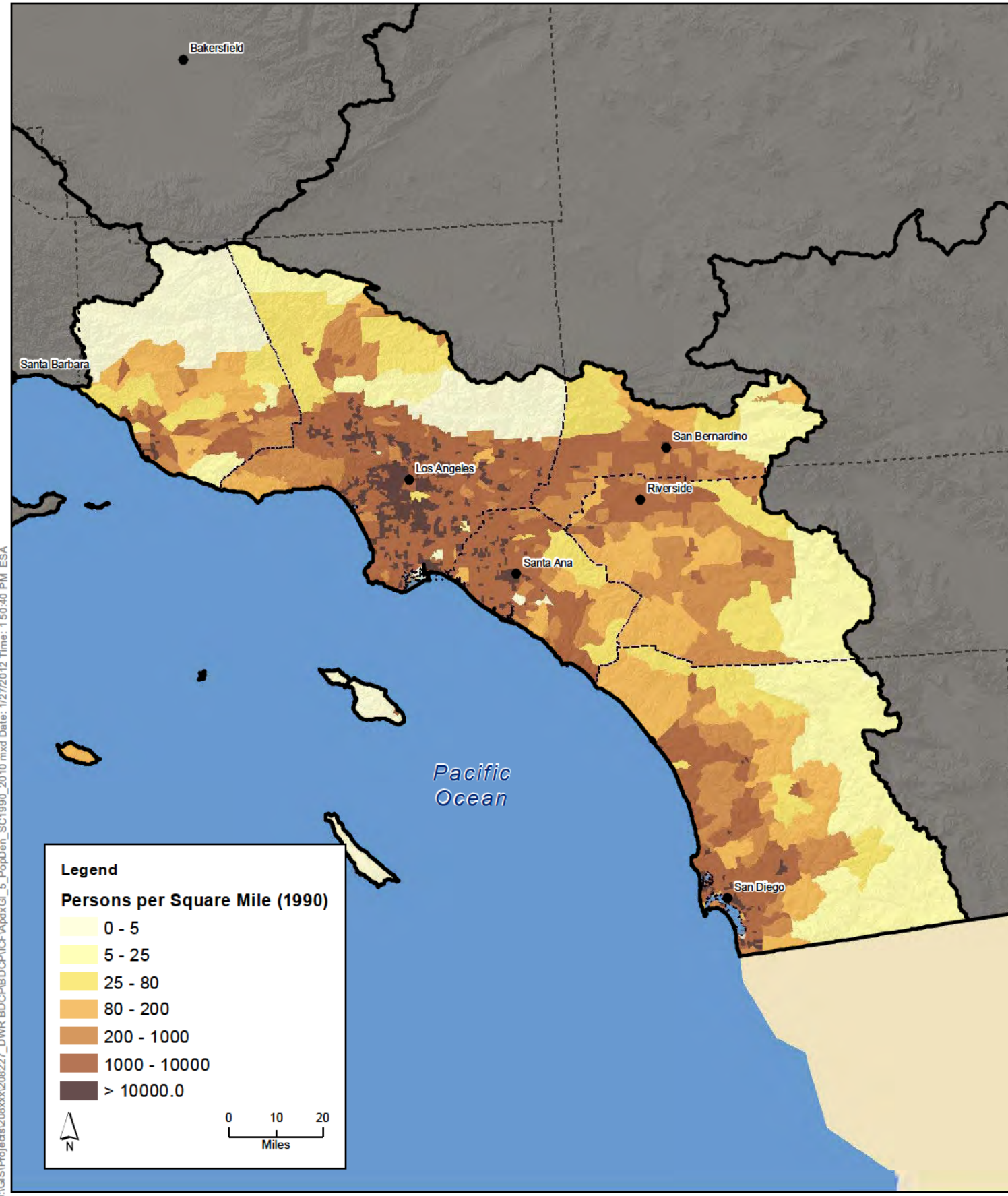
Figure 30A-3
Population Density in the San Joaquin River Hydrologic Region 1990 & 2010



J:\GIS\Projects\208xxx\208227_DWR_BDCP\BDCP\ICF\ApdxGI_4_PopDen_CC1990_2010.mxd Date: 1/27/2012 Time: 2:06:44 PM ESA

Source: Hydrologic Regions, CAS L, 2004. Population Density 1990, U.S. Census Bureau, 1990. Population Density 2010, ESRI, 2011.

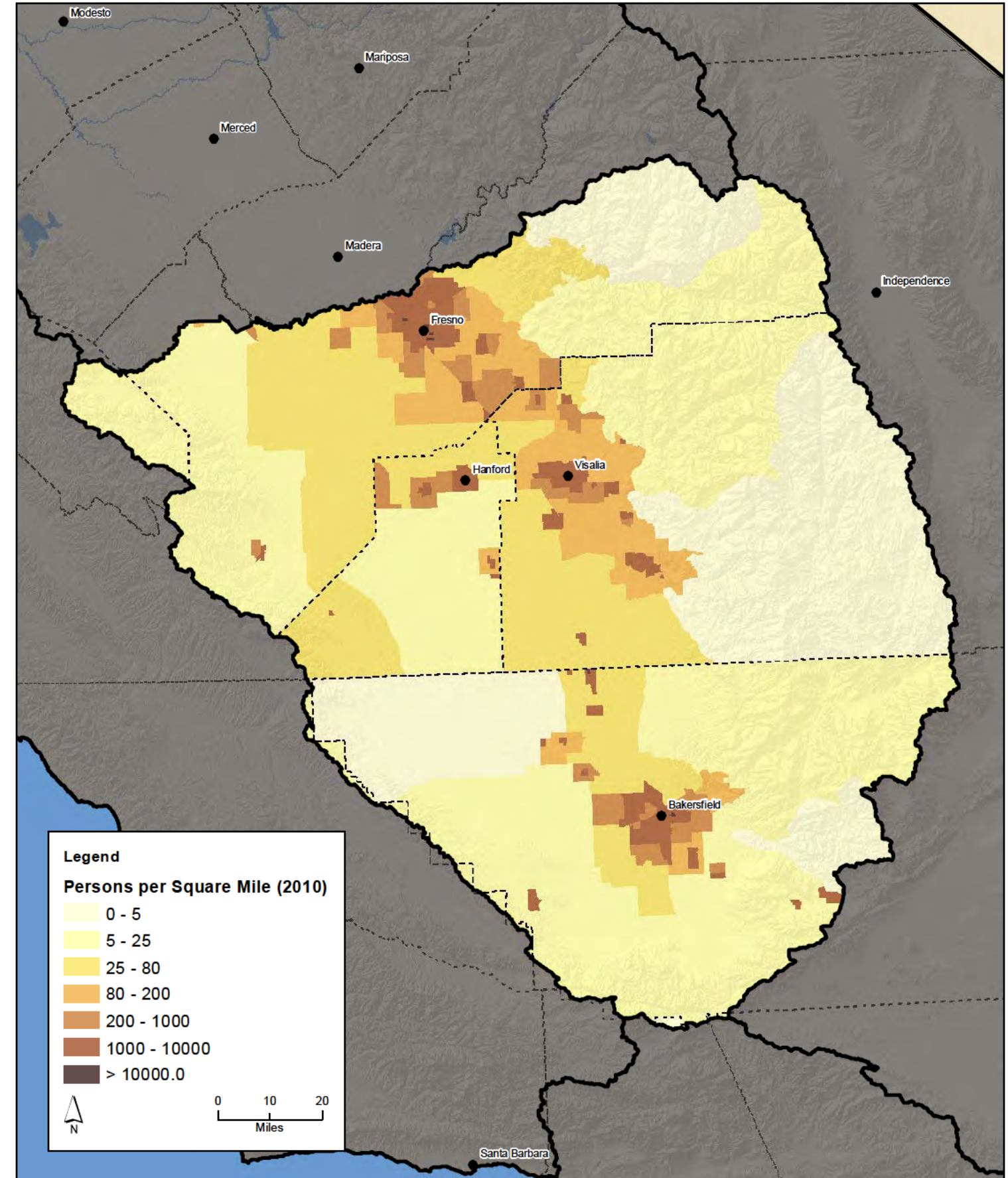
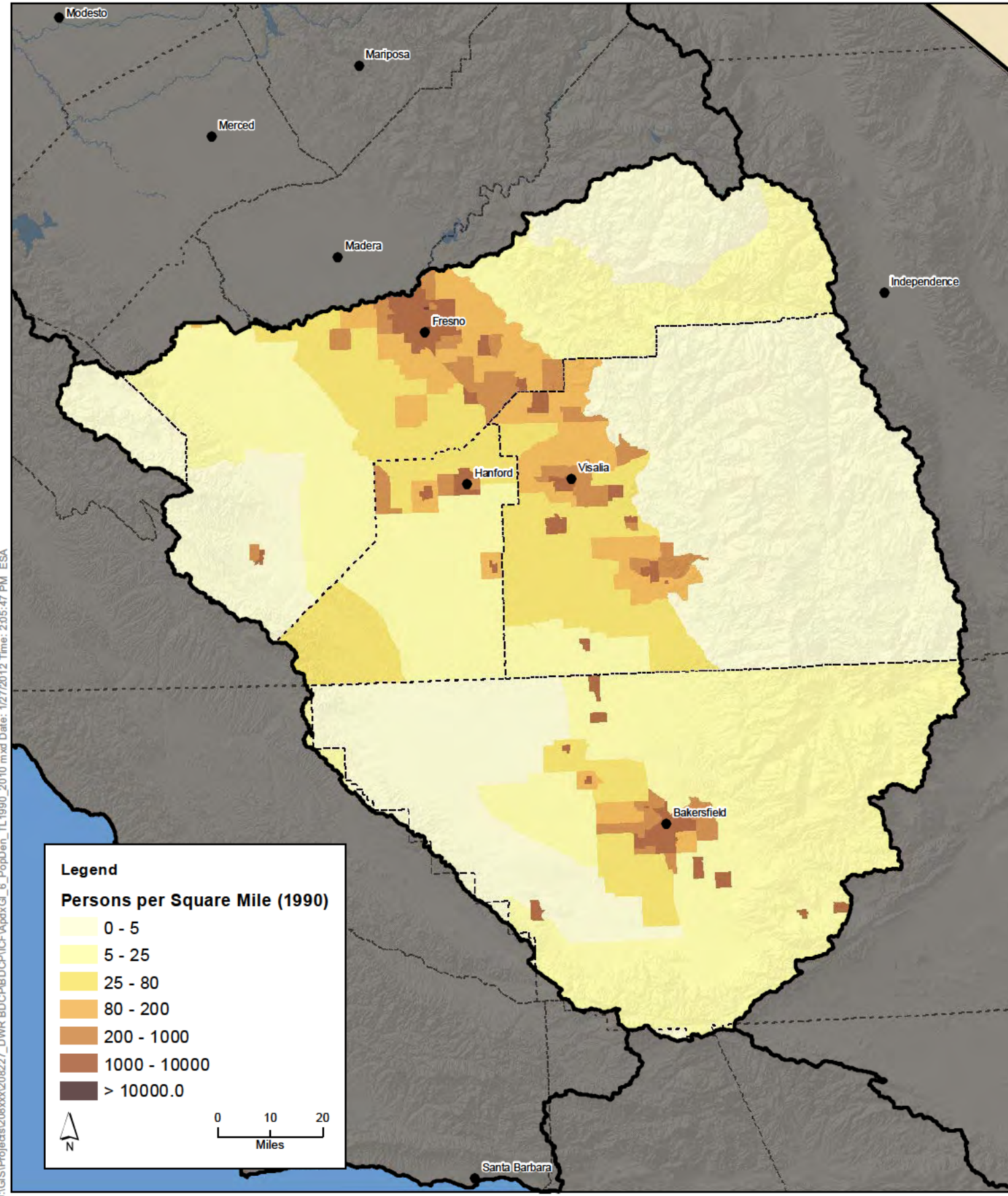
Figure 30A-4
Population Density in the Central Coast Hydrologic Region 1990 & 2010



J:\GIS\Projects\208xxx\208227_DWR_BDCP\BDCP\ICF\Apdx_GI_5_PopDen_SC1990_2010.mxd Date: 1/27/2012 Time: 1:50:40 PM ESA

Source: Hydrologic Regions, CAS L, 2004. Population Density 1990, U.S. Census Bureau, 1990. Population Density 2010, ESRI, 2011.

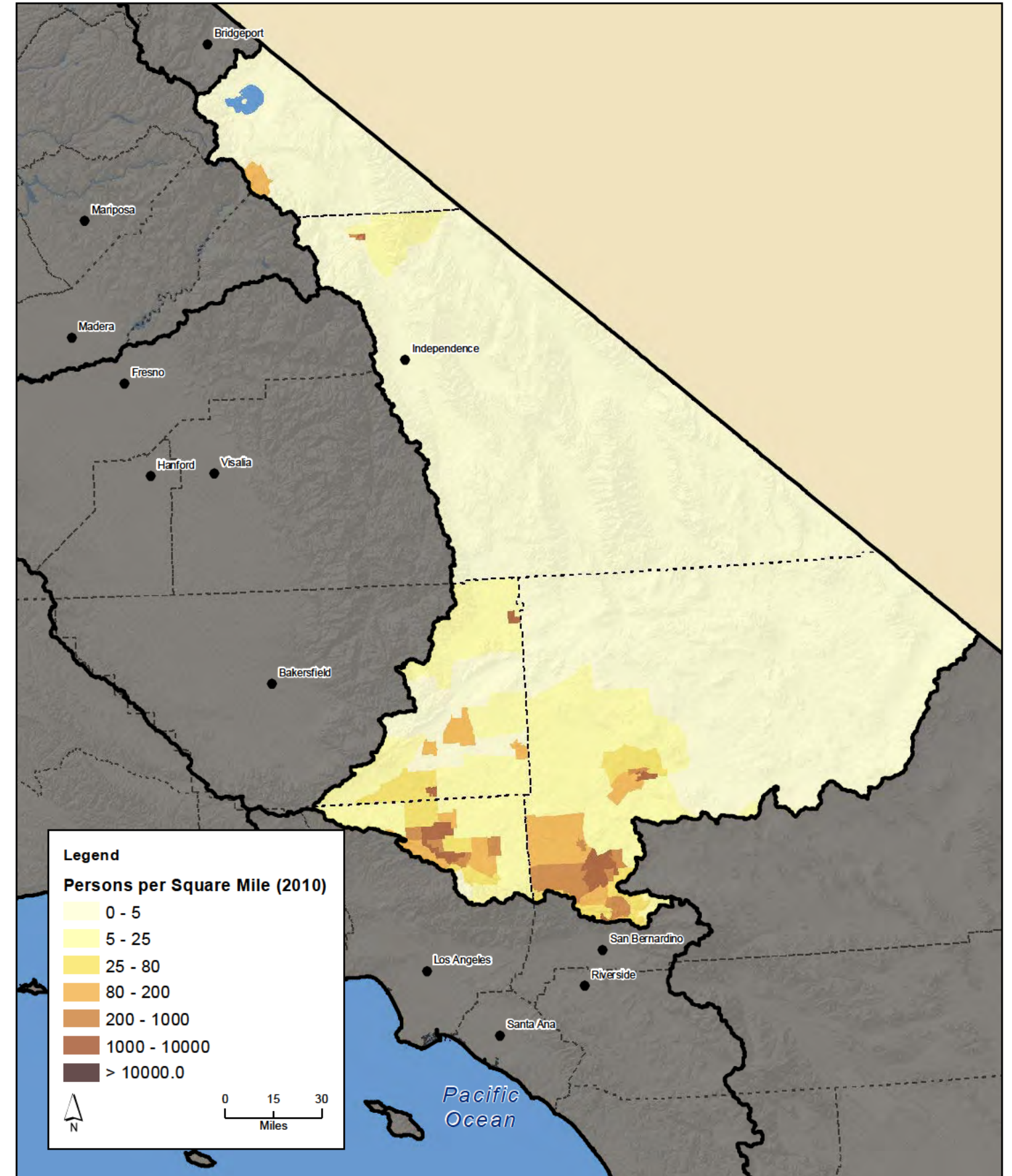
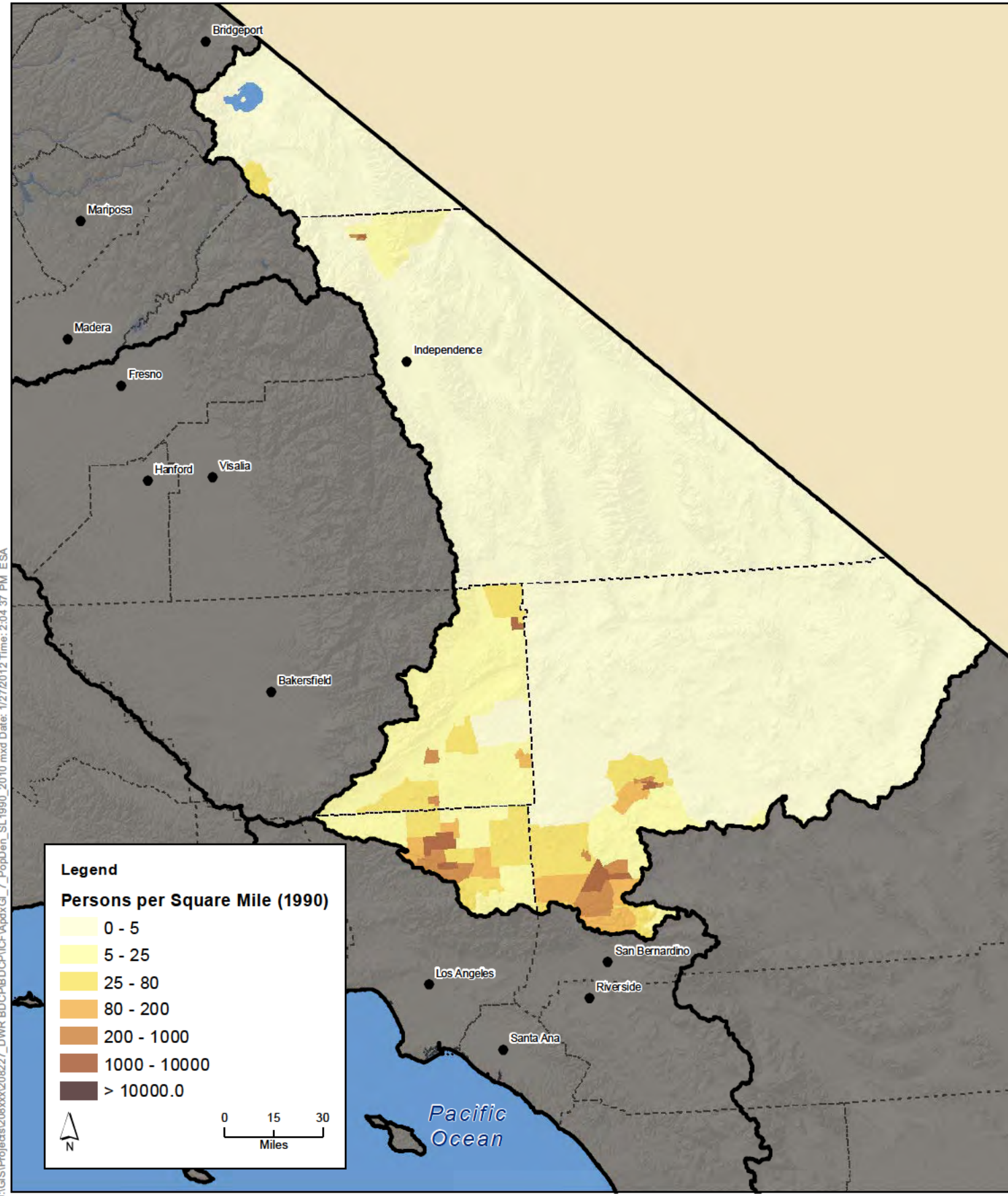
Figure 30A-5
Population Density in the South Coast Hydrologic Region 1990 & 2010



J:\GIS\Projects\208xxx\208227_DWR_BDCP\BDCP\ICF\ApdxGI_6_PopDen_TL1990_2010.mxd Date: 1/27/2012 Time: 2:05:47 PM ESA

Source: Hydrologic Regions, CAS L, 2004. Population Density 1990, U.S. Census Bureau, 1990. Population Density 2010, ESRI, 2011.

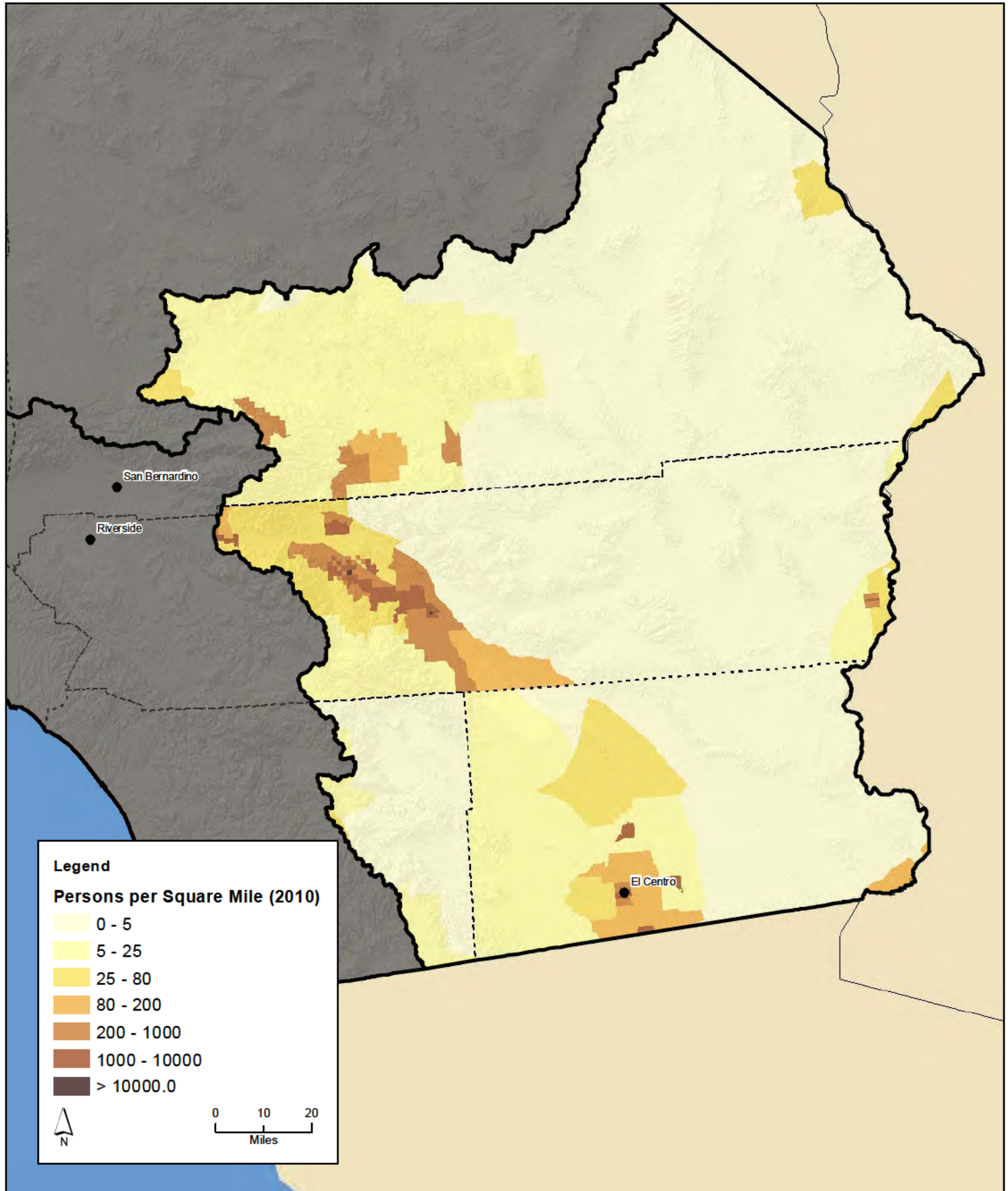
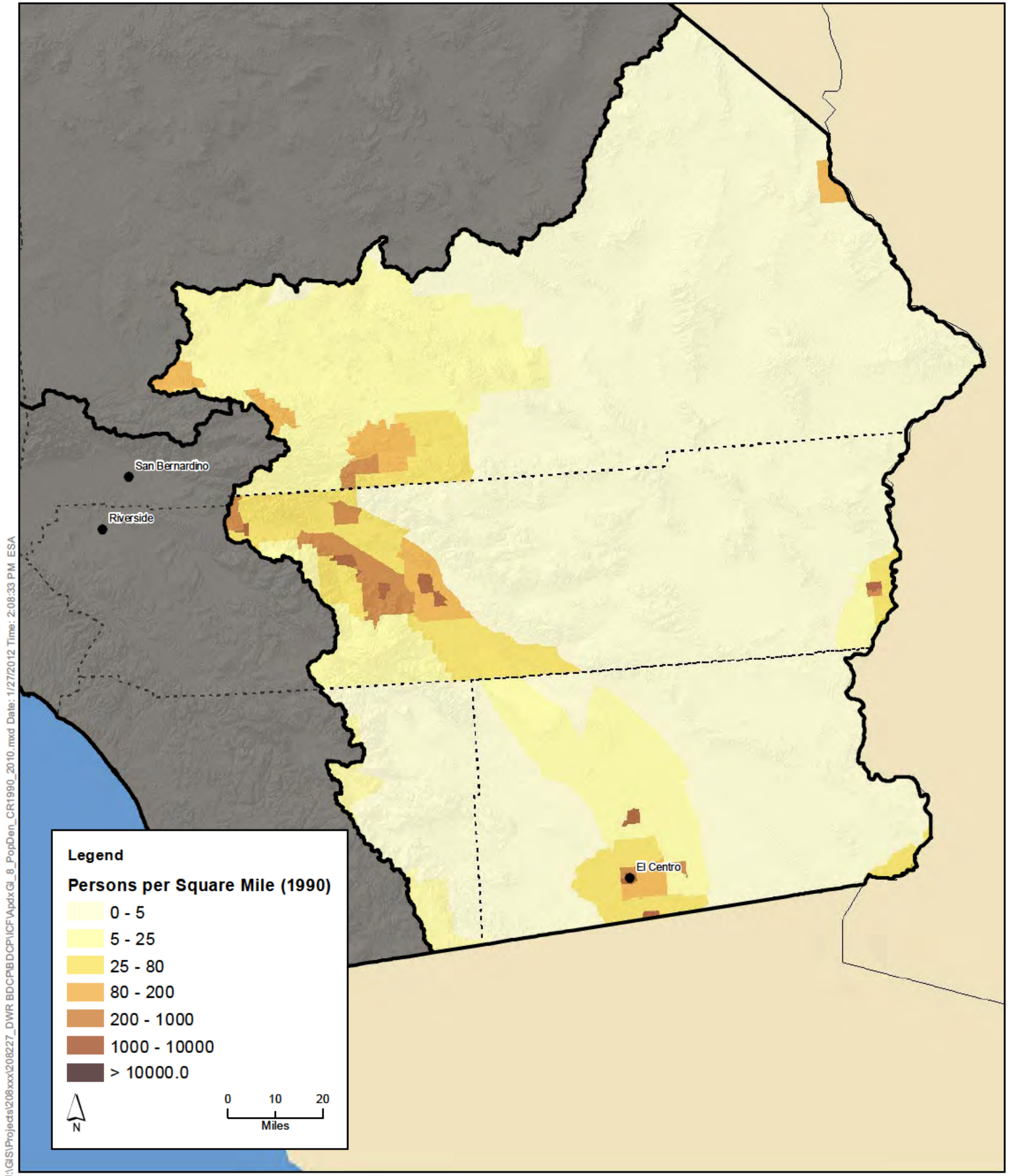
Figure 30A-6
Population Density in the Tulare Lake Hydrologic Region 1990 & 2010



J:\GIS\Projects\208xxx\208227_DWR_BDCP\BDCP\ICF\Apdx_GI_7_PopDen_SL_1990_2010.mxd Date: 1/27/2012 Time: 2:04 37 PM ESA

Source: Hydrologic Regions, CAS L, 2004. Population Density 1990, U.S. Census Bureau, 1990. Population Density 2010, ESRI, 2011.

Figure 30A-7
Population Density in the South Lahontan Hydrologic Region 1990 & 2010



J:\GIS\Projects\208xxx\208227_DWR_BDCP\BDCP\ICF\ApdxGI_8_PopDen_CR1990_2010.mxd Date: 1/27/2012 Time: 2:08:33 PM ESA

Source: Hydrologic Regions, CAS L, 2004. Population Density 1990, U.S. Census Bureau, 1990. Population Density 2010, ESRI, 2011.

Figure 30A-8
Population Density in the Colorado River Hydrologic Region 1990 & 2010