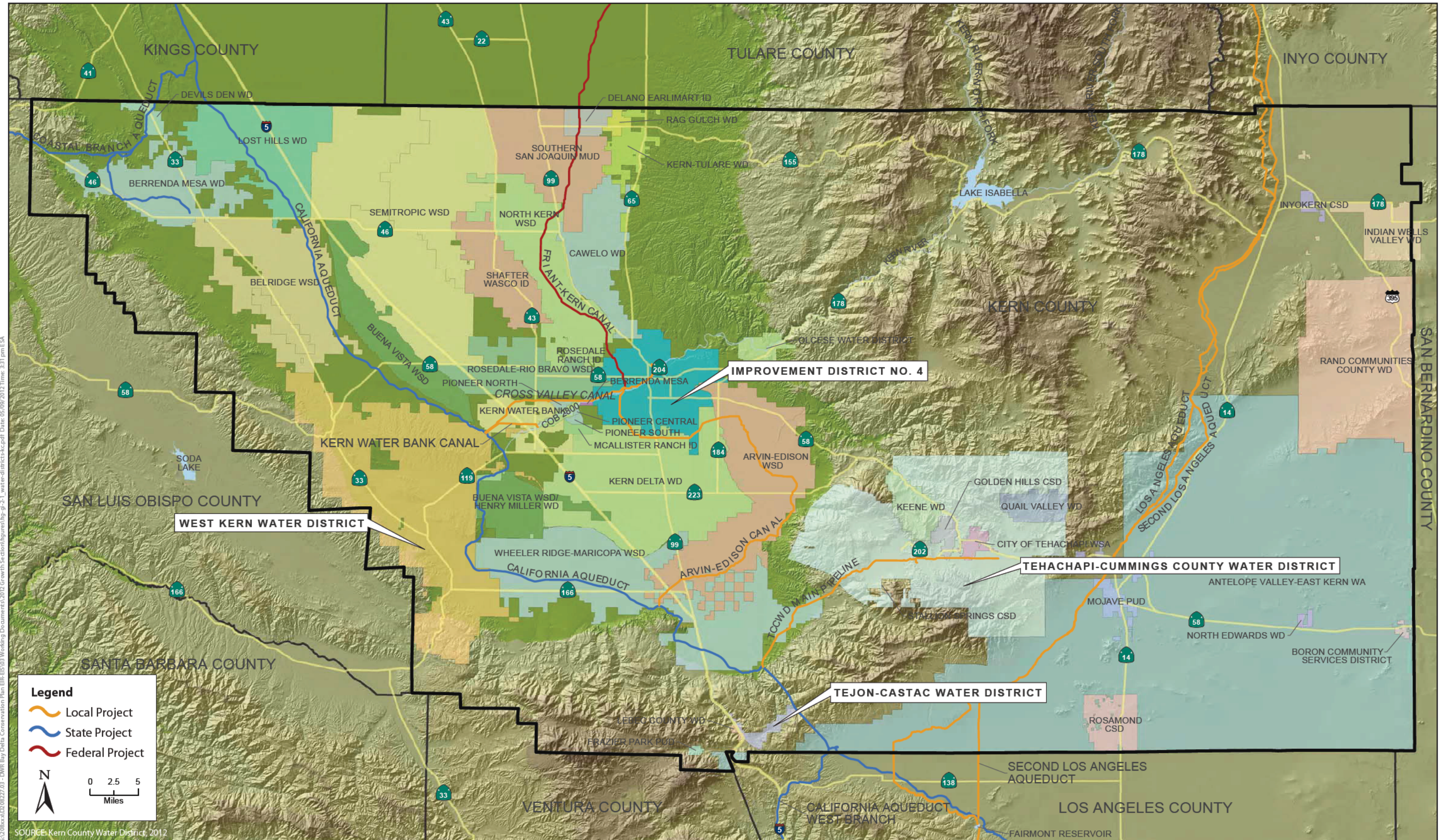


Notes: CVP and SWP supplies are total deliveries and include supplies from Semitropic water bank, carry-over, sales, transfers, and exchanges.

Source: SCVWD 2010, Figure 3-2



6:12:08 AM 02/08/2012 - DWR Bay Delta Conservation Plan EIR-ES-03 Working Document a) 2012 Growth Section/figures/fig-g-2-1_water-districts-kcp.pdf Date: 05/09/2012 Time: 3:31 pm ESA

SOURCE: Kern County Water District, 2012

Figure 30B-2
Water Districts in Kern County