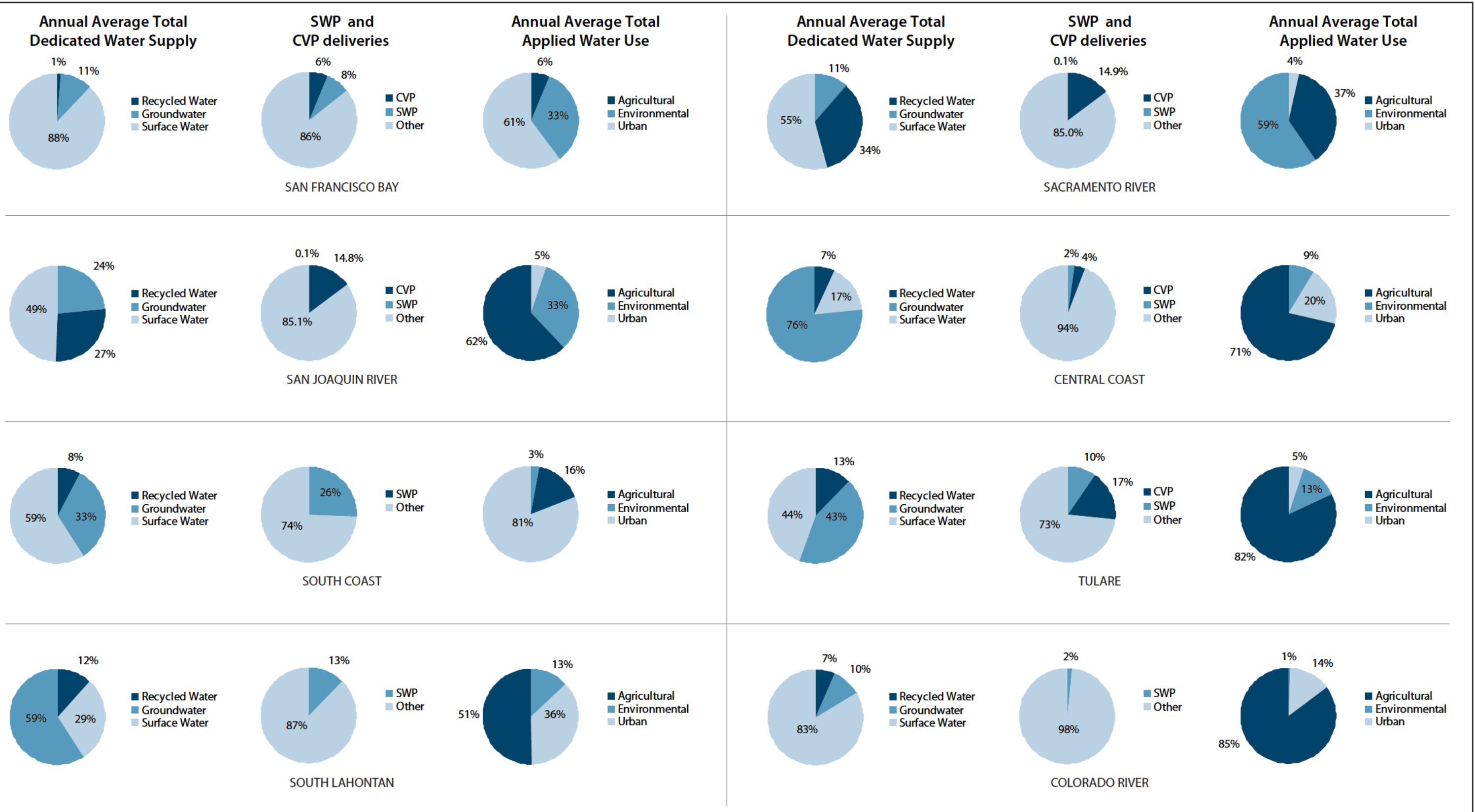


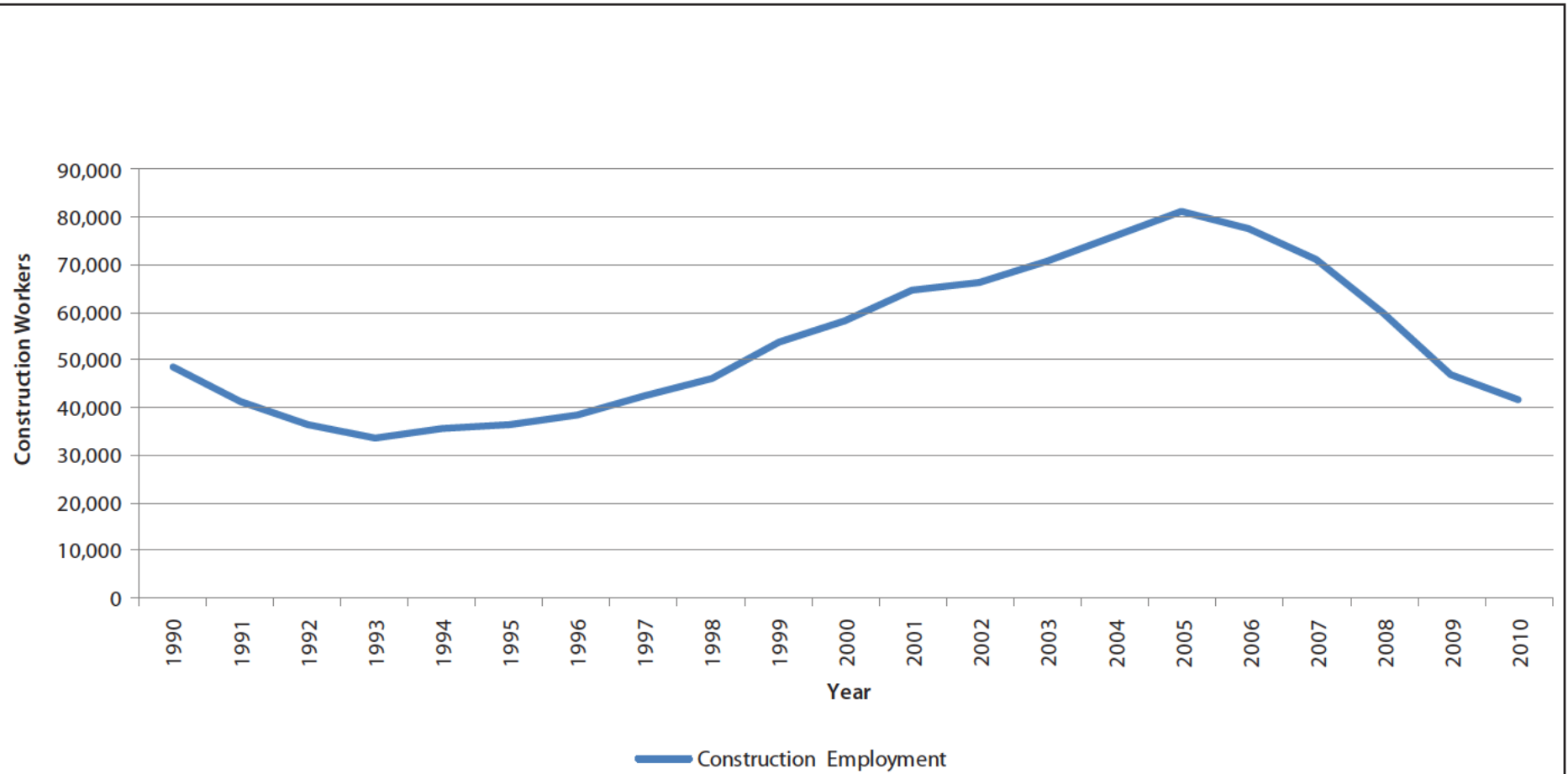
G:\08\08\02\027\703 - DWR Bay Delta Conservation Plan EIR-ES03 Working Documents\2012 Growth\Section\figures\fig30-1\_regional-supply-use.pdf Date: 05/24/2012 Time: 2:04 pm ESA



NOTES: 1 Data based upon annual water balances for years 1998-2005 for the San Francisco Bay Hydrologic Region.  
 2 Dedicated (or developed) water supply refers to water distributed among urban and agricultural uses, used for protecting and restoring the environment, or storage in surface water and groundwater reservoirs. In any year, some of the dedicated supply includes water that is used multiple times (reuse) and water held in storage from previous years (DWR, 2009).  
 3 Applied water refers to the total amount of water diverted from any source to meet the demands for beneficial use by water users (dedicated water uses) without adjusting for water that is consumptively used, becomes return flow, is reused, or is irrecoverable (DWR 2009).

SOURCE: DWR 2011c

**Figure 30-1**  
**Water Supply and Use Among the Hydrologic Regions**

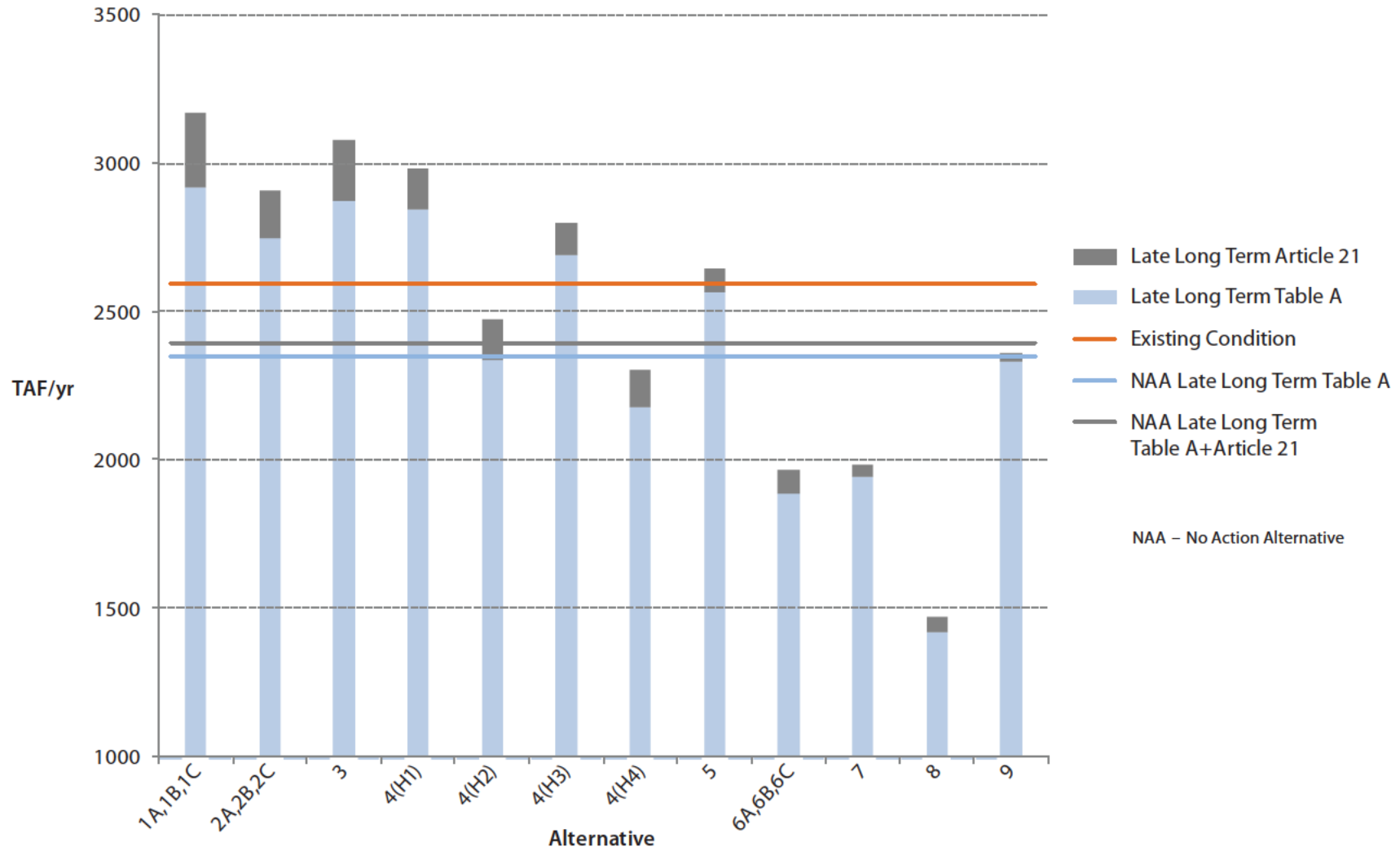


NOTES: This figure represents annual average construction employment for Sacramento County, the Stockton Metropolitan Statistical Area (MSA) (San Joaquin County), the Vallejo-Fairfield MSA (Solano County), and Yolo County. The California Employment Development Department annual average industry employment data by county do not include information on construction employment for Contra Costa County or countywide information for San Joaquin and Solano counties.

The annual average industry employment information provided by the California Employment Development Department for San Joaquin and Solano Counties is only for the Stockton Metropolitan Statistical Area (MSA) and the Vallejo-Fairfield MSA, respectively, rather than for the entire counties.

SOURCE: State of California, Employment Development Department, Industry Employment & Labor Force by Annual Average, March 2010 Benchmark, September 16, 2011 for Sacramento County, Yolo County, and Stockton and Vallejo-Fairfield MSAs, adapted by ESA

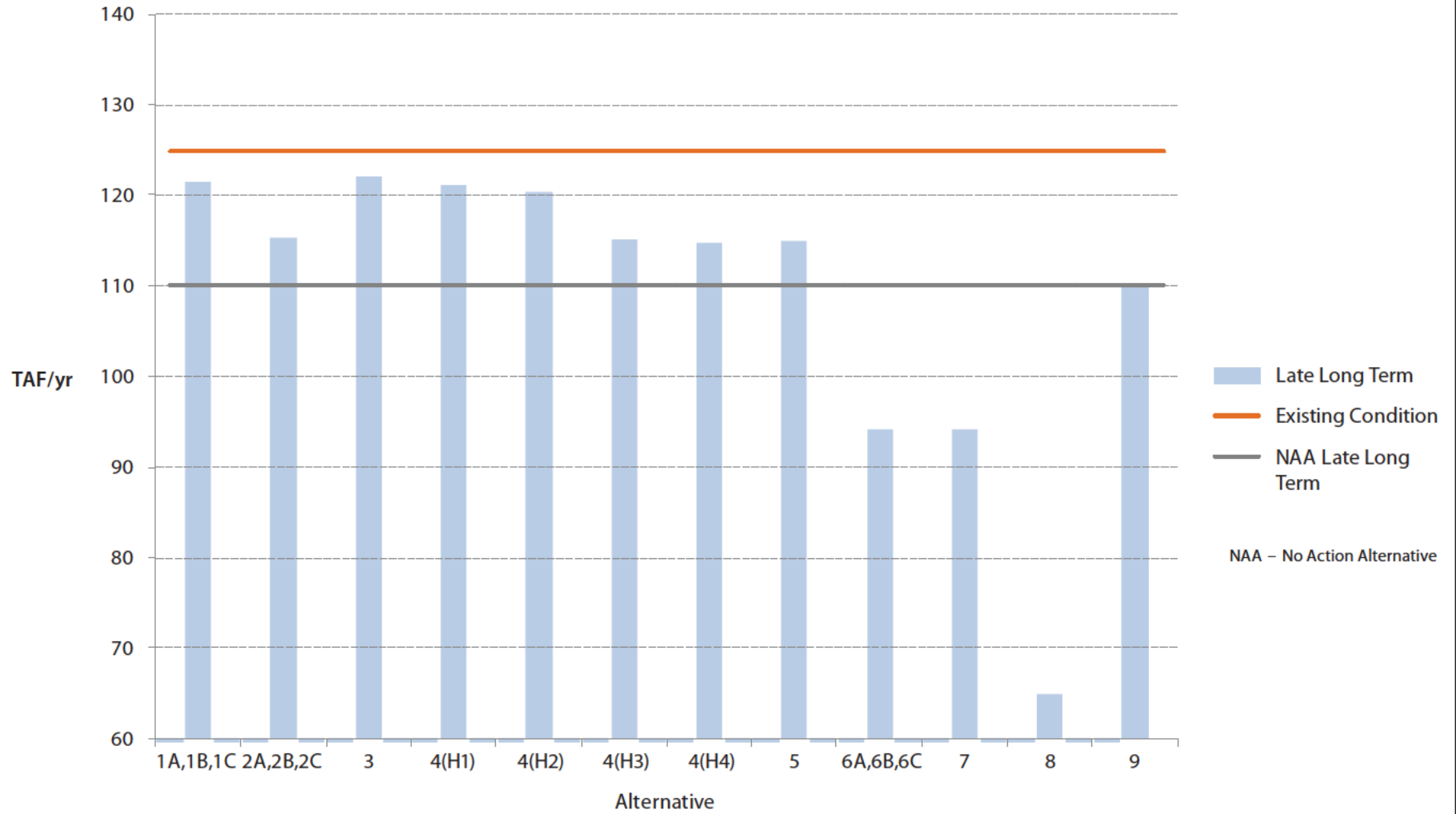
**Figure 30-2**  
**Changes in Construction Employment in Solano, Yolo, Sacramento, and San Joaquin Counties (1990-2010)**



SOURCE: BDCP modeling results for SWP contractors as reported in SWP\_TableA\_Art21\_delivery\_by\_contractor\_newAlt1A2B\_tables\_110211.xls, November 2011; SWP\_TableA\_Art21\_delivery\_by\_contractor\_Alt2A\_tables\_021412.xls, February 2012; SWP\_TableA\_Art21\_delivery\_by\_contractor\_tables\_110111(031412).xls, March 2012; and SWP\_TableA\_Art21\_delivery\_by\_contractor\_Alt4A\_tables\_050112.xls, May 2012, SWP\_TableA\_Art21\_delivery\_by\_contractor\_010913\_Alt4\_Decision\_Tree\_Result.xls, January 2013, adapted by ESA

**Figure 30-3**  
**Summary of Changes in SWP (M&I and Agriculture) Deliveries by Alternative**

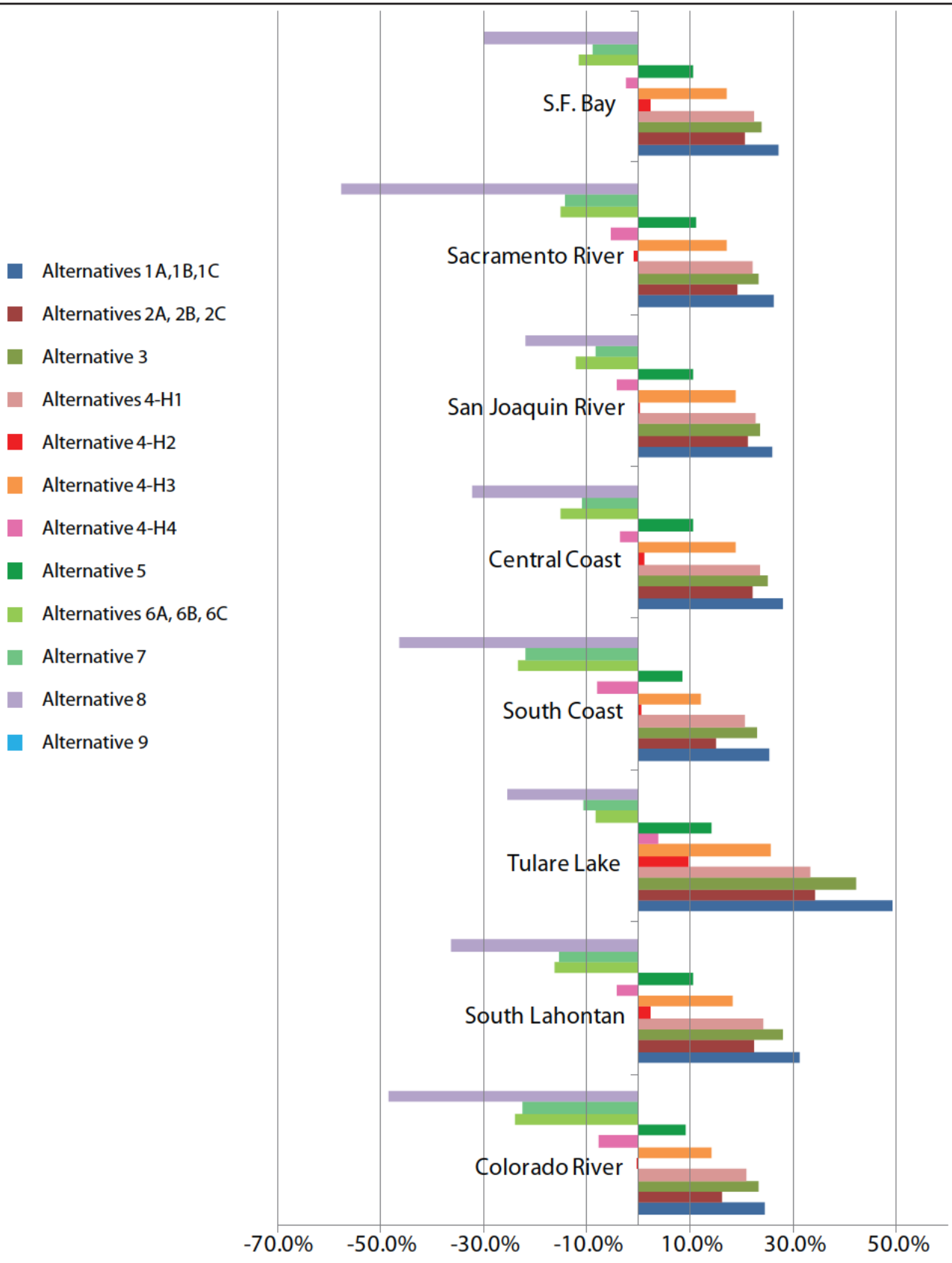
G:\208\000\208227\03 - DWR BayDelta Conservation Plan EIR-EIS\03 Working Documents\2013 Growth Section\Revised Figures\fig30-4\_deliveries-by-alt.pdf Date: 1/11/2013 Time: 1:42 am ESA



SOURCE: BDCP modeling results for CVP M&I contractors as reported BDCP\_Alternatives\_CVP\_M&I\_Deliveries\_020212.xls, February 2012; BDCP\_Alternatives\_CVP\_M&I\_Deliveries\_with\_Alt8\_050112.xls, May 2012; and BDCP\_Alternatives\_CVP\_M&I\_Deliveries\_ELT\_052112, May 2012, BDCP\_Alternatives\_CVP\_M&I\_Deliveries\_Alt4\_Decision\_Tree\_010913.xls, January 2013, adapted by ESA

**Figure 30-4**  
**Summary of Changes in CVP Municipal and Industrial Deliveries by Alternative**

G:\208\000\20822703 - DWR Bay Delta Conservation Plan EIR-EIS\03 Working Documents\2013 Growth Section\Revised Figures\fig30-5\_swp-deliveries-by-region.pdf Date: 1/11/2013 Time: 10:04 am ESA

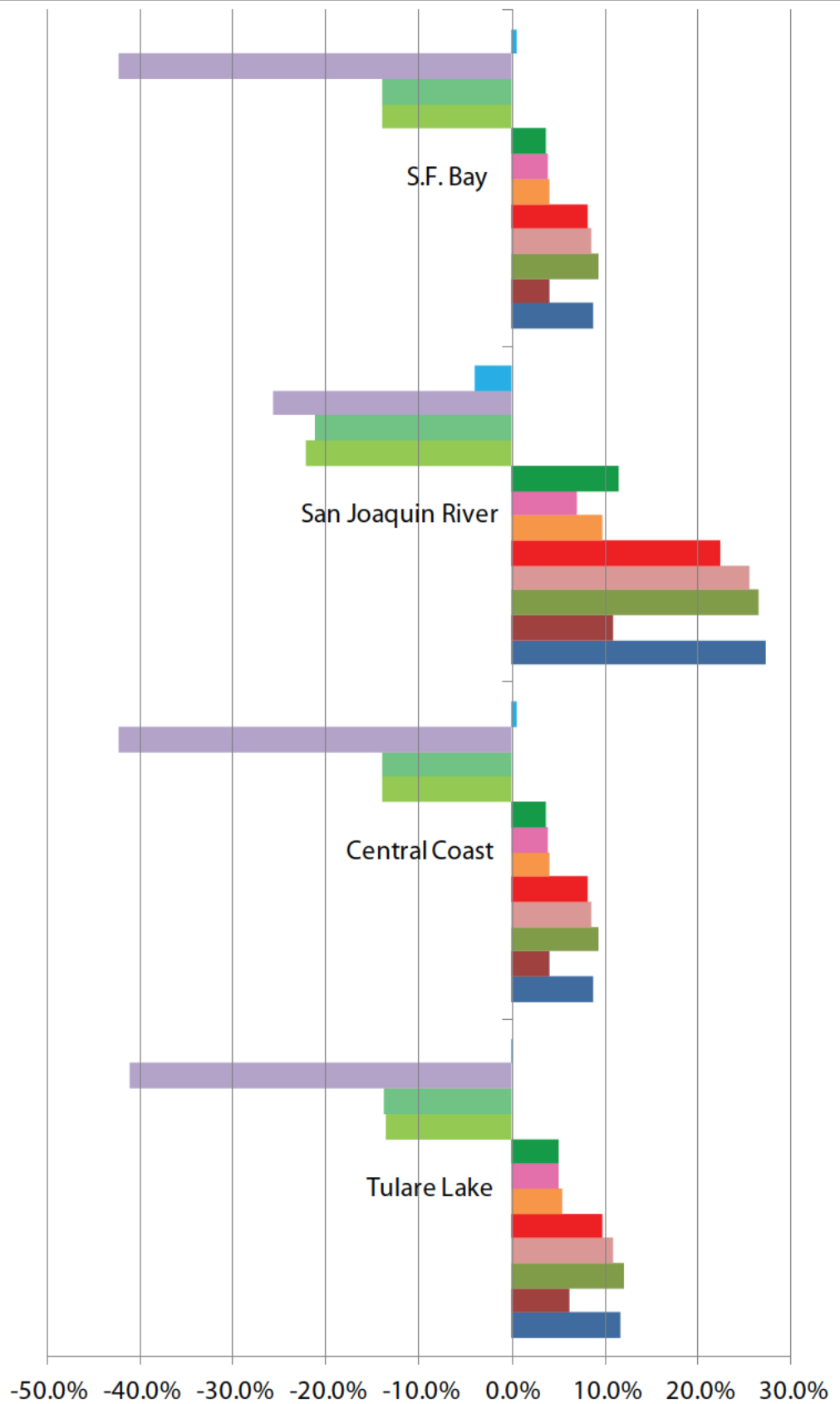


SOURCE: BDCP modeling results for SWP contractors as reported in SWP\_TableA\_Art21\_delivery\_by\_contractor\_newAlt1A2B\_tables\_110211.xls, November 2011; SWP\_TableA\_Art21\_delivery\_by\_contractor\_Alt2A\_tables\_021412.xls, February 2012; SWP\_TableA\_Art21\_delivery\_by\_contractor\_tables\_110111(031412).xls, March 2012; and SWP\_TableA\_Art21\_delivery\_by\_contractor\_Alt4A\_tables\_050112.xls, May 2012, SWP\_TableA\_Art21\_delivery\_by\_contractor\_010913\_Alt4\_Decision\_Tree\_Result.xls, January 2013, adapted by ESA

**Figure 30-5**  
**Projected Percentage Change in SWP Deliveries (M&I and Agriculture) by**  
**Hydrologic Region Compared to the No Action Alternative**

G:\208\000\208227\03 - DWR Bay Delta Conservation Plan EIR-EIS\03 Working Documents\2013 Growth Section\Revised Figures\fig30-6\_cvp-deliveries-by-region.pdf Date: 1/11/2013 Time: 10:17 am ESA

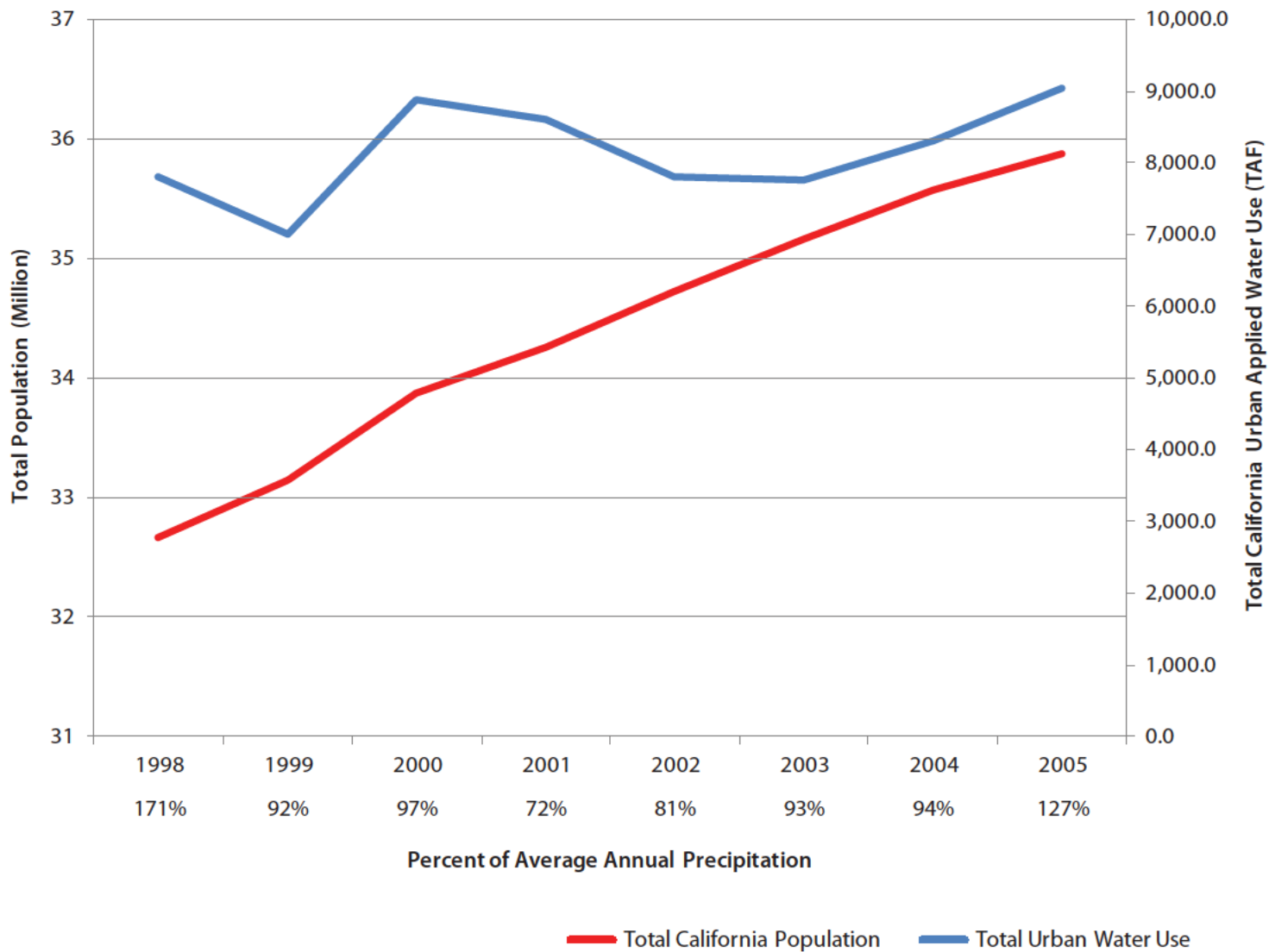
- Alternatives 1A, 1B, 1C
- Alternatives 2A, 2B, 2C
- Alternative 3
- Alternative 4-H1
- Alternative 4-H2
- Alternative 4-H3
- Alternative 4-H4
- Alternative 5
- Alternatives 6A, 6B, 6C
- Alternative 7
- Alternative 8
- Alternative 9



SOURCE: BDCP modeling results for CVP M&I contractors as reported BDCP\_Alternatives\_CVP\_M&I\_Deliveries\_020212.xls, February 2012; BDCP\_Alternatives\_CVP\_M&I\_Deliveries\_with\_Alt8\_050112.xls, May 2012; and BDCP\_Alternatives\_CVP\_M&I\_Deliveries\_EL\_052112, May 2012; BDCP\_Alternatives\_CVP\_M&I\_Deliveries\_Alt4\_Decision\_Tree\_010913.xls, January 2013, adapted by ESA

**Figure 30-6**  
**Projected Percentage Change in CVP M&I Deliveries by**  
**Hydrologic Region Compared to the No Action Alternative**

G:\208xxx\208227.03 - DWR BayDelta Conservation Plan\_EIR-EIS\03 Working Documents\2012 Growth Section\figures\fig30-7\_pop-water-use.pdf Date: 05/24/2012 Time: 1:51 pm,ESA



SOURCE: DWR 2009, DOF 2007c, DOF 2011, adapted by ESA

**Figure 30-7**  
**Statewide Population Compared to Applied Water Use (1998 - 2005)**