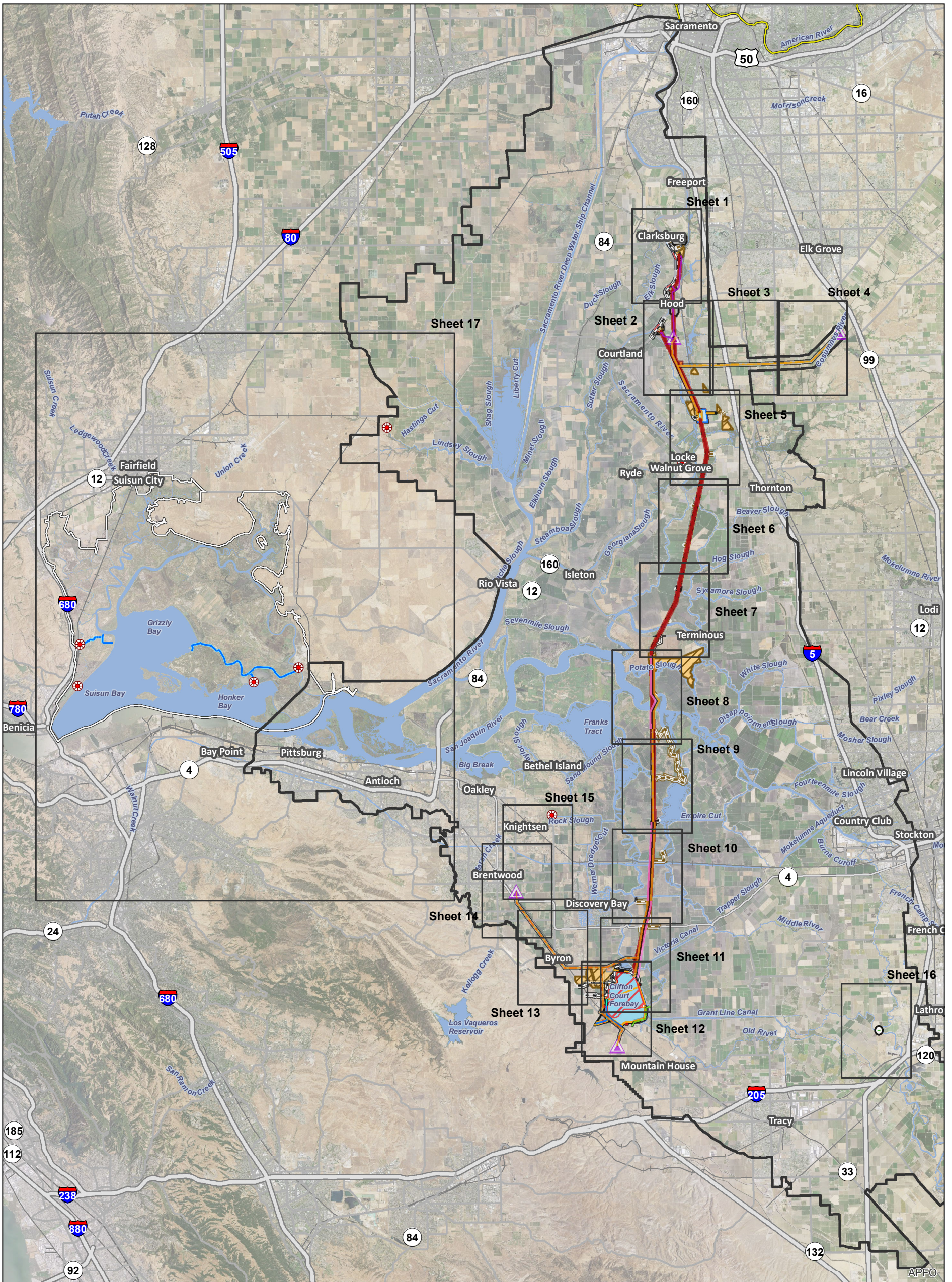
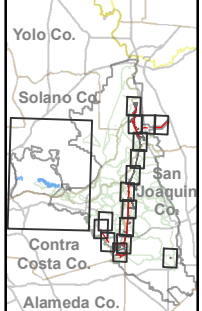


1 Appendix 3.A, Map Book for the Proposed Action



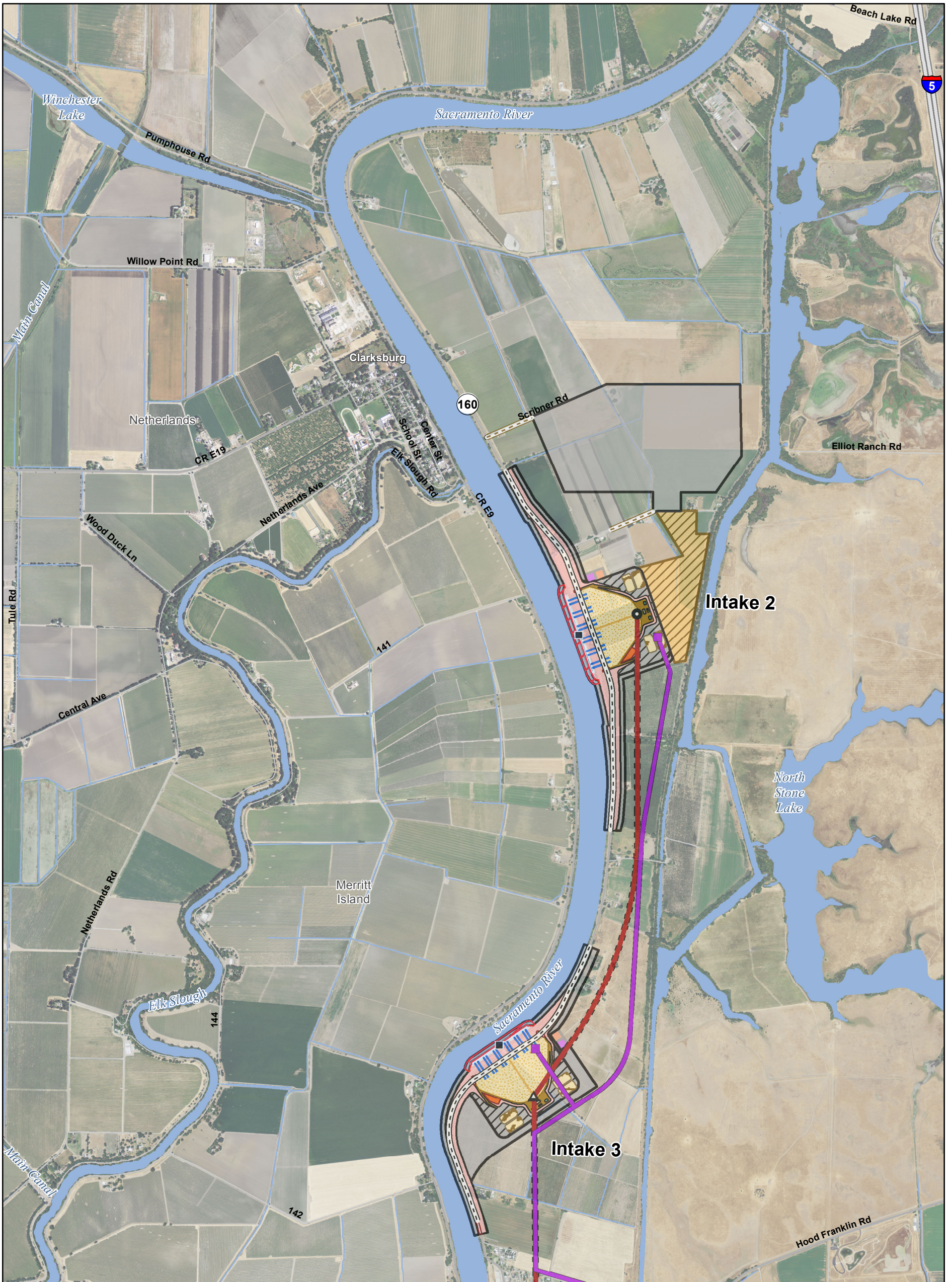
T:\WGI\38\GIS_33_00\GIS\SRRequest_11\FID\Deliverable_10\FEN\129_15_BA_Mpbk_Ch3_Index.mxd 20150929

- Legend**
- Suisun Marsh Boundary
 - Water
 - Action Area**
 - * Diversion Facilities
 - Other Facility
 - Upstream River
 - Legal Delta and Transmission Line Corridor



Sources: Diversion Facilities Delta Vision 2012, ICF 2015; DWR DHCCP Engineering (rev 5b); NAIP 2014

**Modified Pipeline Tunnel/Clifton Court Forebay Option
Endangered Species Act Section 7 - Biological Assessment
Index**



T:\WG\38\GIS_33_00\GISRequest_11\FID\Deliverable_10\FID\ENV\129_15_BA_Mpbk_Ch3.mxd 20150929 4:19:42 PM

<ul style="list-style-type: none"> Suisun Marsh Boundary Action Area Other Facilities Other Facility Upstream River Legal Delta and Corridor Transmission Line Utility Features Point of Interconnection Substation Local Tap 	<ul style="list-style-type: none"> Point of Interconnection Substation Local Tap 500 kV (Existing) 500 kV (Proposed) 230 kV (Existing) 230 kV (Proposed) 230/34.5 kV (Proposed) 69 kV (Proposed) 	<ul style="list-style-type: none"> Engineering Features Intake Junction Structure Main Construction Shaft Ventilation/Access Shaft Canal HOR Gate Permanent Access Road Siphon 	<ul style="list-style-type: none"> Temporary Access Road Tunnel Tunnel Conveyor Canal Cofferdam Control Structure Dredging Electrical Substation Emergency Generator Facility Access Facility Grounds Fill Pad 	<ul style="list-style-type: none"> Forebay Forebay Embankment Forebay Inlet Structure Forebay Outlet Structure Forebay Overflow Forebay Overflow Structure Fuel Tank Gravity-Bypass Channel Spillway Intake MCC/Electrical Building Office Trailer 	<ul style="list-style-type: none"> Outlet Tower Overflow Containment Berm Piping Public Road Pumping Plant Sediment Basin Solids Lagoon Staging Storage Storage/Detention Tank Water Treatment Facility 	<ul style="list-style-type: none"> Permanent Subsurface Impact Permanent Surface Impact Temporary Surface Impact Reusable Tunnel Material Area Barge Unloading Facility Fuel Station Concrete Batch Plant
---	--	--	--	--	---	---

Sources: Diversion Facilities Delta Vision 2012; ICF Action Area 2015; DWR DCE Engineering CCO (rev 5b); NAIP 2014



T:\WG\38\GIS_33_00\GISRequest_11\FID\Deliverable_10\FEN\129_15_BA_Mpbk_Ch3.mxd 20150929 4:24:37 PM

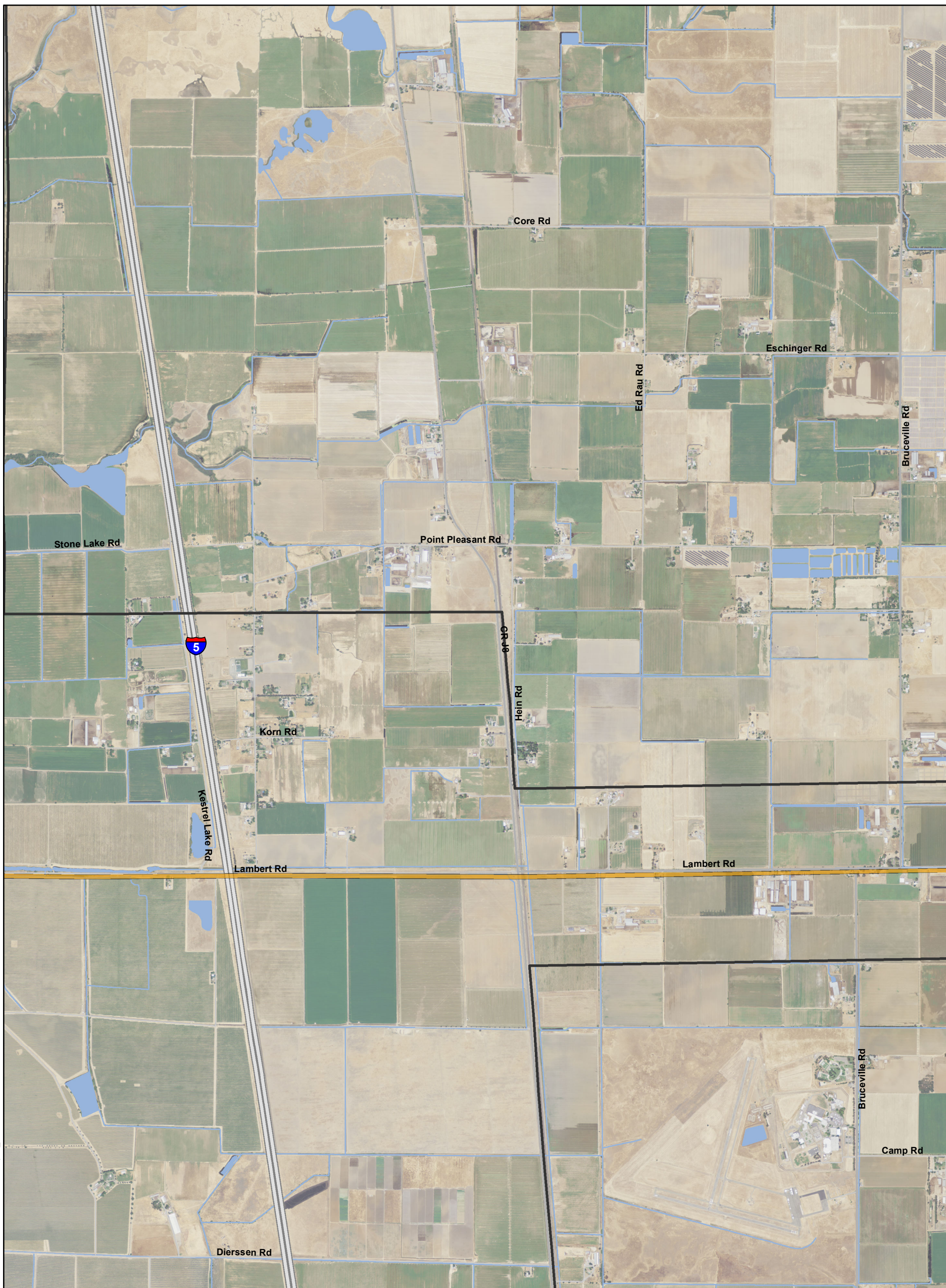
<ul style="list-style-type: none"> Suisun Marsh Boundary Action Area Other Facilities Other Facility Upstream River Legal Delta and Corridor Transmission Line Utility Features Point of Interconnection Substation Local Tap 	<ul style="list-style-type: none"> Substation Local Tap 500 kV (Existing) 500 kV (Proposed) 230 kV (Existing) 230 kV (Proposed) 230/34.5 kV (Proposed) 69 kV (Proposed) 	<ul style="list-style-type: none"> Engineering Features Intake Junction Structure Main Construction Shaft Ventilation/Access Shaft Canal HOR Gate Permanent Access Road Siphon 	<ul style="list-style-type: none"> Temporary Access Road Tunnel Tunnel Conveyor Canal Cofferdam Control Structure Dredging Electrical Substation Emergency Generator Facility Access Facility Grounds Fill Pad 	<ul style="list-style-type: none"> Forebay Forebay Embankment Forebay Inlet Structure Forebay Outlet Structure Forebay Overflow Forebay Overflow Structure Fuel Tank Gravity-Bypass Channel Spillway Intake MCC/Electrical Building Office Trailer 	<ul style="list-style-type: none"> Outlet Tower Overflow Containment Berm Piping Public Road Pumping Plant Sediment Basin Solids Lagoon Staging Storage Storage/Retention Tank Water Treatment Facility 	<ul style="list-style-type: none"> Permanent Subsurface Impact Permanent Surface Impact Temporary Surface Impact Reusable Tunnel Material Area Barge Unloading Facility Fuel Station Concrete Batch Plant
---	---	--	--	--	---	---

0 1,000 2,000
Feet

N

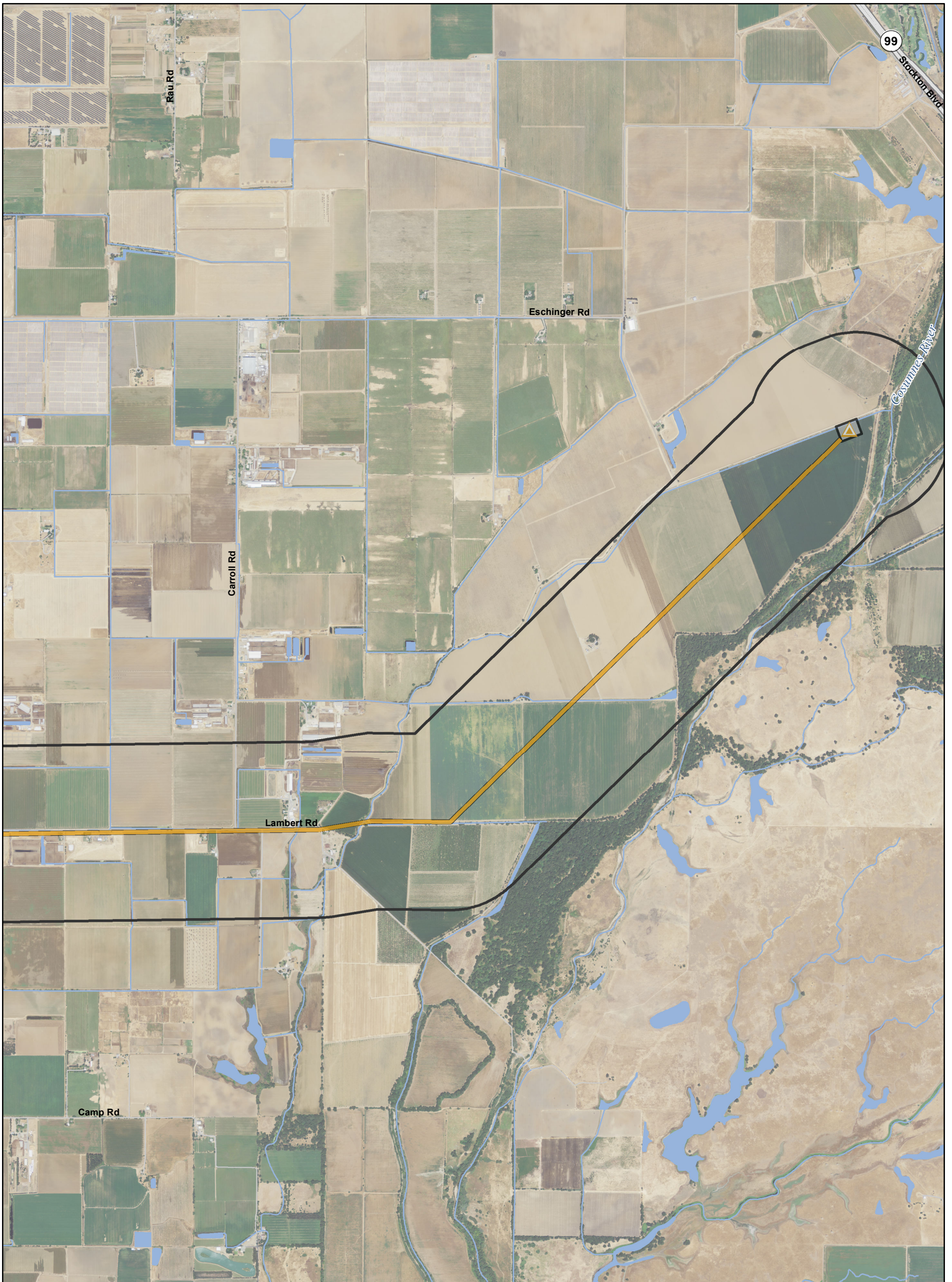
Sources: Diversion Facilities Delta Vision 2012; ICF Action Area 2015; DWR DCE Engineering CCO (rev 5b); NAIP 2014

T:\WG\38\GIS_33_00\GISRequest_11\F\Deliverable_10\EN\EN129_15_BA_Mpbk_Ch3.mxd 20150929 4:29:11 PM



<ul style="list-style-type: none"> Suisun Marsh Boundary Action Area Other Facilities Other Facility Upstream River Legal Delta and Corridor Transmission Line Utility Features Point of Interconnection Substation Local Tap 	<ul style="list-style-type: none"> Point of Interconnection Substation Local Tap 500 kV (Existing) 500 kV (Proposed) 230 kV (Existing) 230 kV (Proposed) 230/34.5 kV (Proposed) 69 kV (Proposed) 	<ul style="list-style-type: none"> Engineering Features Intake Junction Structure Main Construction Shaft Ventilation/Access Shaft Canal HOR Gate Permanent Access Road Siphon 	<ul style="list-style-type: none"> Temporary Access Road Tunnel Tunnel Conveyor Canal Cofferdam Control Structure Dredging Electrical Substation Emergency Generator Facility Access Facility Grounds Fill Pad 	<ul style="list-style-type: none"> Forebay Forebay Embankment Forebay Inlet Structure Forebay Outlet Structure Forebay Overflow Forebay Overflow Structure Fuel Tank Gravity-Bypass Channel Spillway Intake MCC/Electrical Building Office Trailer 	<ul style="list-style-type: none"> Outlet Tower Overflow Containment Berm Piping Public Road Pumping Plant Sediment Basin Solids Lagoon Staging Storage Storage/Detention Tank Water Treatment Facility 	<ul style="list-style-type: none"> Permanent Subsurface Impact Permanent Surface Impact Temporary Surface Impact Reusable Tunnel Material Area Barge Unloading Facility Fuel Station Concrete Batch Plant
--	---	--	--	--	---	--

Sources: Diversion Facilities Delta Vision 2012; ICF Action Area 2015; DWR DCE Engineering CCO (rev 5b); NAIP 2014



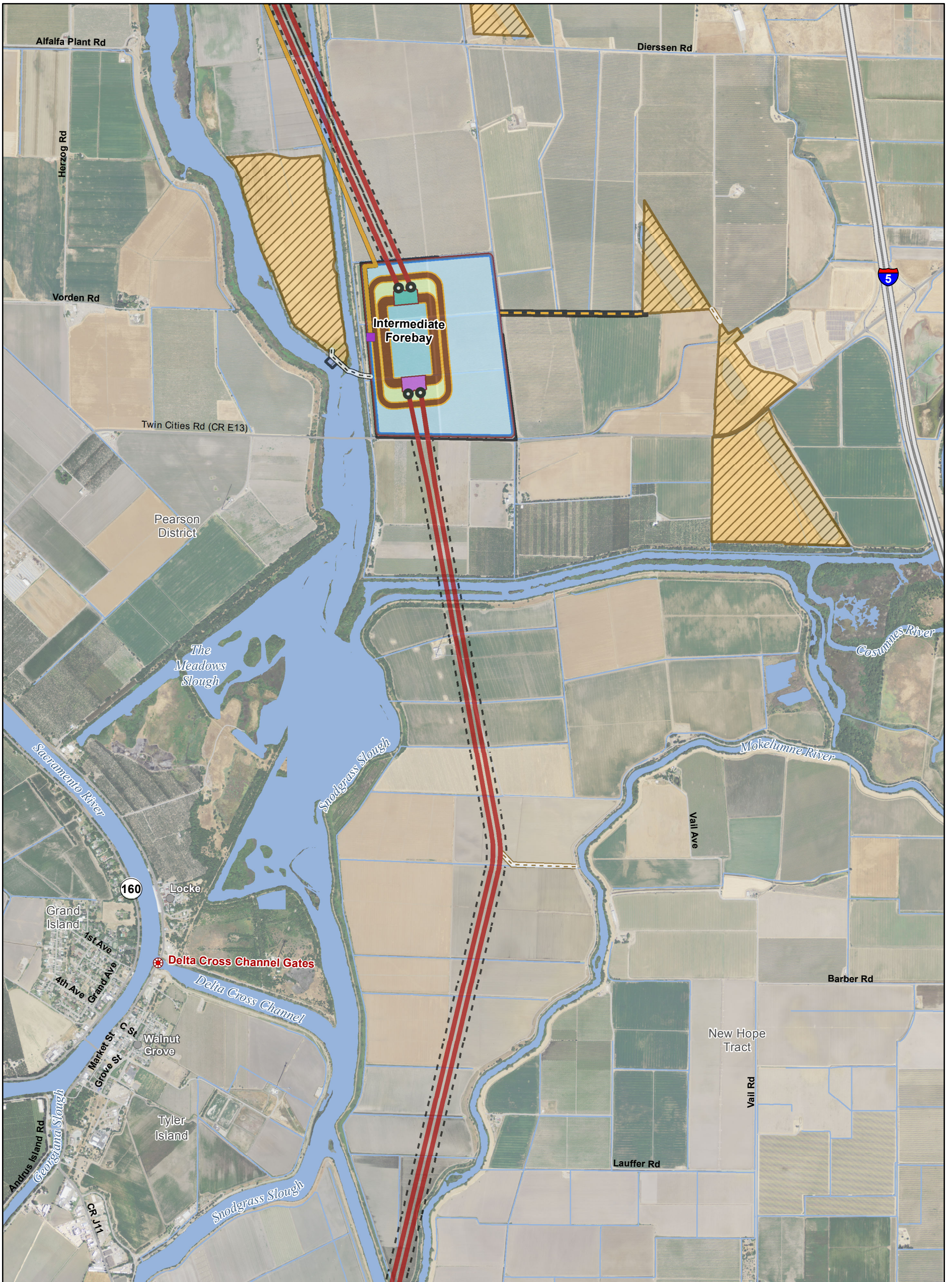
T:\WG\38\GIS_33_00\GISRequest_11\FID\Deliverable_10\FID\ENV\29_15_BA_Mpbk_Ch3.mxd 20150929 4:33:43 PM

<ul style="list-style-type: none"> Suisun Marsh Boundary Action Area Other Facilities Other Facility Upstream River Legal Delta and Transmission Line Corridor Utility Features Point of Interconnection Substation Local Tap 	<ul style="list-style-type: none"> Substation Local Tap 500 kV (Existing) 500 kV (Proposed) 230 kV (Existing) 230 kV (Proposed) 230/34.5 kV (Proposed) 69 kV (Proposed) 	<ul style="list-style-type: none"> Engineering Features Intake Junction Structure Main Construction Shaft Ventilation/Access Shaft Canal HOR Gate Permanent Access Road Siphon 	<ul style="list-style-type: none"> Temporary Access Road Tunnel Tunnel Conveyor Canal Cofferdam Control Structure Dredging Electrical Substation Emergency Generator Facility Access Facility Grounds Fill Pad 	<ul style="list-style-type: none"> Forebay Forebay Embankment Forebay Inlet Structure Forebay Outlet Structure Forebay Overflow Forebay Overflow Structure Fuel Tank Gravity-Bypass Channel Spillway Intake MCC/Electrical Building Office Trailer 	<ul style="list-style-type: none"> Outlet Tower Overflow Containment Berm Piping Public Road Pumping Plant Sediment Basin Solids Lagoon Staging Storage Storage/Detention Tank Water Treatment Facility 	<ul style="list-style-type: none"> Permanent Subsurface Impact Permanent Surface Impact Temporary Surface Impact Reusable Tunnel Material Area Barge Unloading Facility Fuel Station Concrete Batch Plant
---	---	--	--	--	---	---

0 1,000 2,000
Feet

N

Sources: Diversion Facilities Delta Vision 2012; ICF Action Area 2015; DWR DCE Engineering CCO (rev 5b); NAIP 2014



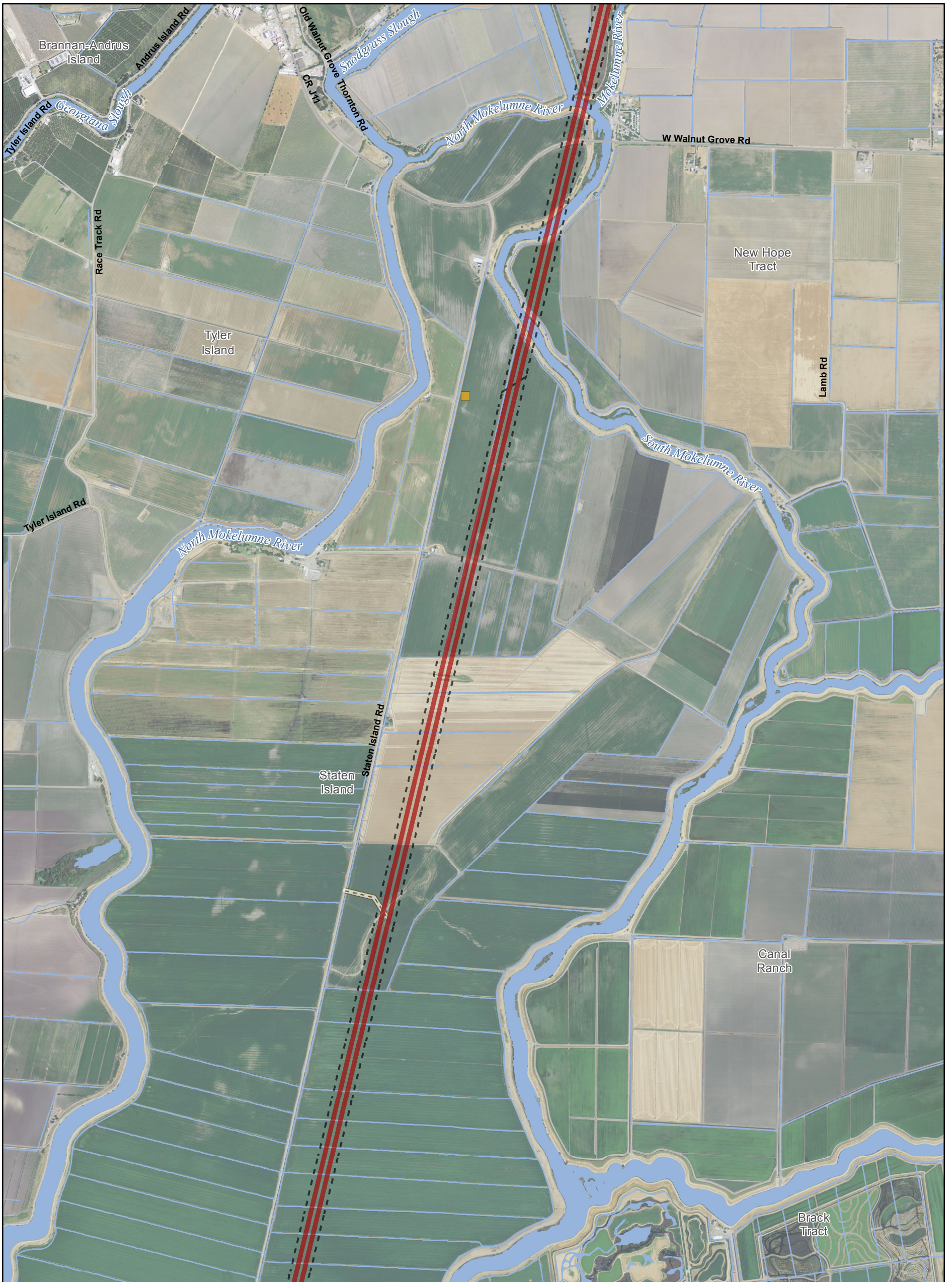
T:\WGI\38\GIS_33_00\GISRequest_11\FID\Deliverable_10\FEN\129_15_BA_Mpbk_Ch3.mxd 20150929 4:38:29 PM

<ul style="list-style-type: none"> Suisun Marsh Boundary Action Area Other Facility Other Facility Upstream River Legal Delta and Transmission Line Corridor Utility Features Point of Interconnection Substation Local Tap 	<ul style="list-style-type: none"> Point of Interconnection Substation Local Tap 500 kV (Existing) 500 kV (Proposed) 230 kV (Existing) 230 kV (Proposed) 230/34.5 kV (Proposed) 69 kV (Proposed) 	<ul style="list-style-type: none"> Engineering Features Intake Junction Structure Main Construction Shaft Ventilation/Access Shaft Canal HOR Gate Permanent Access Road Siphon 	<ul style="list-style-type: none"> Temporary Access Road Tunnel Tunnel Conveyor Canal Cofferdam Control Structure Dredging Electrical Substation Emergency Generator Facility Access Facility Grounds Fill Pad 	<ul style="list-style-type: none"> Forebay Forebay Embankment Forebay Inlet Structure Forebay Outlet Structure Forebay Overflow Forebay Overflow Structure Fuel Tank Gravity-Bypass Channel Spillway Intake MCC/Electrical Building Office Trailer 	<ul style="list-style-type: none"> Outlet Tower Overflow Containment Berm Piping Public Road Pumping Plant Sediment Basin Solids Lagoon Staging Storage Storage/Detention Tank Water Treatment Facility 	<ul style="list-style-type: none"> Permanent Subsurface Impact Permanent Surface Impact Temporary Surface Impact Reusable Tunnel Material Area Barge Unloading Facility Fuel Station Concrete Batch Plant
---	--	--	--	--	---	---

0 1,000 2,000

Feet

Sources: Diversion Facilities Delta Vision 2012; ICF Action Area 2015; DWR DCE Engineering CCO (rev 5b); NAIP 2014



T:\WGI\38\GIS_33_00\GISRequest_11\FID\Deliverable_10\FEN\129_15_BA_Mpbk_Ch3.mxd 20150929 4:43:23 PM

<ul style="list-style-type: none"> Suisun Marsh Boundary Action Area Other Facilities Other Facility Upstream River Legal Delta and Transmission Line Corridor Utility Features Point of Interconnection Substation Local Tap 	<ul style="list-style-type: none"> Point of Interconnection Substation Local Tap 500 kV (Existing) 500 kV (Proposed) 230 kV (Existing) 230 kV (Proposed) 230/34.5 kV (Proposed) 69 kV (Proposed) 	<ul style="list-style-type: none"> Engineering Features Intake Junction Structure Main Construction Shaft Ventilation/Access Shaft Canal HOR Gate Permanent Access Road Siphon 	<ul style="list-style-type: none"> Temporary Access Road Tunnel Tunnel Conveyor Canal Cofferdam Control Structure Dredging Electrical Substation Emergency Generator Facility Access Facility Grounds Fill Pad 	<ul style="list-style-type: none"> Forebay Forebay Embankment Forebay Inlet Structure Forebay Outlet Structure Forebay Overflow Structure Forebay Overflow Structure Fuel Tank Gravity-Bypass Channel Spillway Intake MCC/Electrical Building Office Trailer 	<ul style="list-style-type: none"> Outlet Tower Overflow Containment Berm Piping Public Road Pumping Plant Sediment Basin Solids Lagoon Staging Storage Storage/Detention Tank Water Treatment Facility 	<ul style="list-style-type: none"> Permanent Subsurface Impact Permanent Surface Impact Temporary Surface Impact Reusable Tunnel Material Area Barge Unloading Facility Fuel Station Concrete Batch Plant
---	--	--	--	--	---	---

Sources: Diversion Facilities Delta Vision 2012; ICF Action Area 2015; DWR DCE Engineering CCO (rev 5b); NAIP 2014



T:\WG\38\GIS_33_00\GISRequest_11\F\Deliverable_10\ENVI29_15_BA_Mpbk_Ch3.mxd 20150929 4:48:22 PM

<ul style="list-style-type: none"> Suisun Marsh Boundary Action Area Other Facilities Other Facility Upstream River Legal Delta and Corridor Transmission Line Utility Features Point of Interconnection Substation Local Tap 	<ul style="list-style-type: none"> Point of Interconnection Substation Local Tap 500 kV (Existing) 500 kV (Proposed) 230 kV (Existing) 230 kV (Proposed) 230/34.5 kV (Proposed) 69 kV (Proposed) 	<ul style="list-style-type: none"> Engineering Features Intake Junction Structure Main Construction Shaft Ventilation/Access Shaft Canal HOR Gate Permanent Access Road Siphon 	<ul style="list-style-type: none"> Temporary Access Road Tunnel Tunnel Conveyor Canal Cofferdam Control Structure Dredging Electrical Substation Emergency Generator Facility Access Facility Grounds Fill Pad 	<ul style="list-style-type: none"> Forebay Forebay Embankment Forebay Inlet Structure Forebay Outlet Structure Forebay Overflow Forebay Overflow Structure Fuel Tank Gravity-Bypass Channel Spillway Intake MCC/Electrical Building Office Trailer 	<ul style="list-style-type: none"> Outlet Tower Overflow Containment Berm Piping Public Road Pumping Plant Sediment Basin Solids Lagoon Staging Storage/Detention Tank Water Treatment Facility 	<ul style="list-style-type: none"> Permanent Subsurface Impact Permanent Surface Impact Temporary Surface Impact Reusable Tunnel Material Area Barge Unloading Facility Fuel Station Concrete Batch Plant
---	--	--	--	--	---	---

0 1,000 2,000

Feet

N

Sources: Diversion Facilities Delta Vision 2012; ICF Action Area 2015; DWR DCE Engineering CCO (rev 5b); NAIP 2014



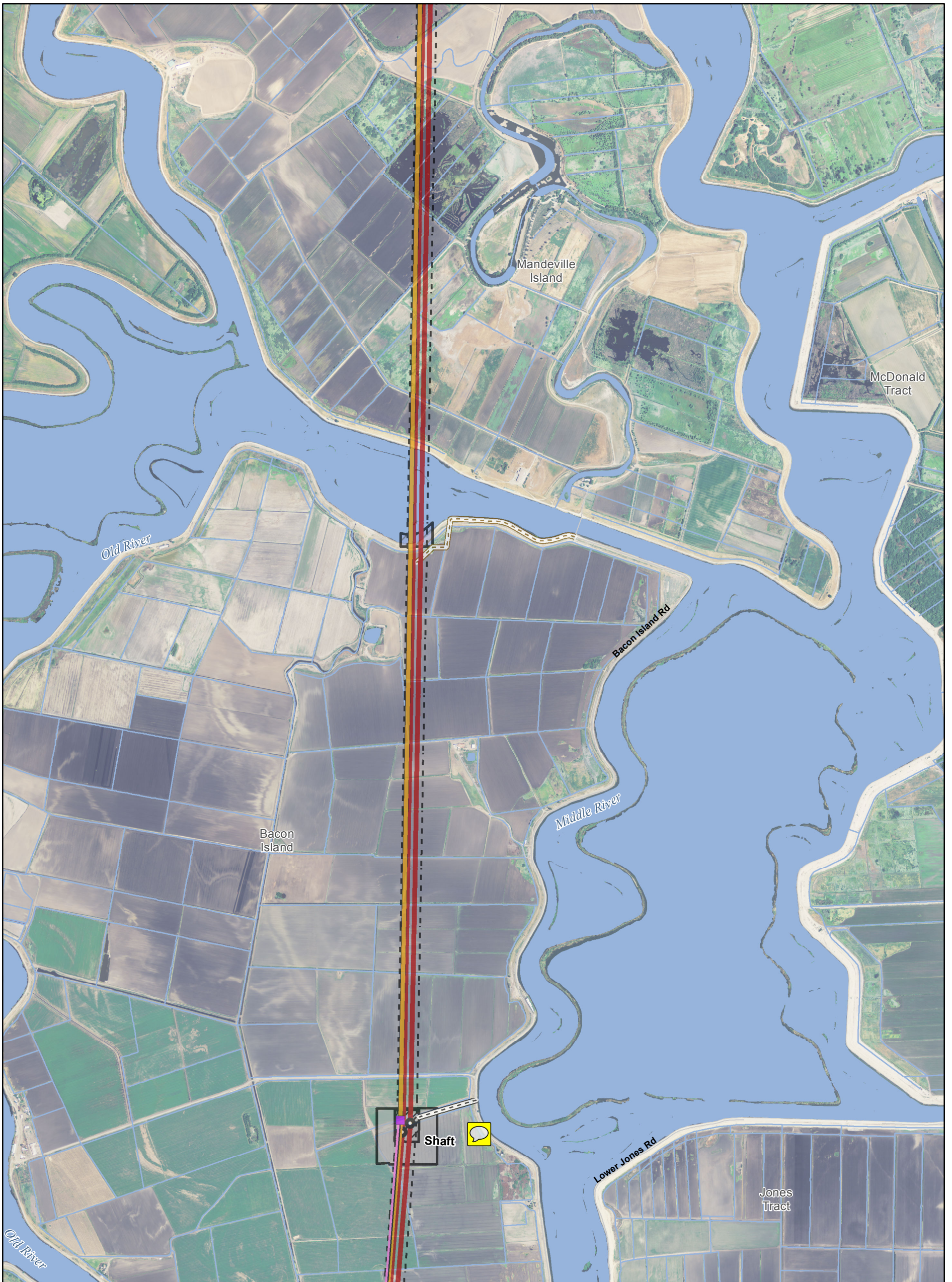
T:\WG\GIS\33_00\GISRequest_11\FID\Deliverable_10\FID\ENVI\29_15_BA_Mpbk_Ch3.mxd 20150929 4:53:04 PM

<ul style="list-style-type: none"> Suisun Marsh Boundary Action Area Other Facilities Other Facility Upstream River Legal Delta and Transmission Line Corridor Utility Features Point of Interconnection Substation Local Tap 	<ul style="list-style-type: none"> Point of Interconnection Substation Local Tap 500 kV (Existing) 500 kV (Proposed) 230 kV (Existing) 230 kV (Proposed) 230/34.5 kV (Proposed) 69 kV (Proposed) 	<ul style="list-style-type: none"> Engineering Features Intake Junction Structure Main Construction Shaft Ventilation/Access Shaft Canal HOR Gate Permanent Access Road Siphon 	<ul style="list-style-type: none"> Temporary Access Road Tunnel Tunnel Conveyor Canal Cofferdam Control Structure Dredging Electrical Substation Emergency Generator Facility Access Facility Grounds Fill Pad 	<ul style="list-style-type: none"> Forebay Forebay Embankment Forebay Inlet Structure Forebay Outlet Structure Forebay Overflow Forebay Overflow Structure Fuel Tank Gravity-Bypass Channel Spillway Intake MCC/Electrical Building Office Trailer 	<ul style="list-style-type: none"> Outlet Tower Overflow Containment Berm Piping Public Road Pumping Plant Sediment Basin Solids Lagoon Staging Storage Storage/Retention Tank Water Treatment Facility 	<ul style="list-style-type: none"> Permanent Subsurface Impact Permanent Surface Impact Temporary Surface Impact Reusable Tunnel Material Area Barge Unloading Facility Fuel Station Concrete Batch Plant
---	--	--	--	--	---	---

0 1,000 2,000
Feet

N

Sources: Diversion Facilities Delta Vision 2012; ICF Action Area 2015; DWR DCE Engineering CCO (rev 5b); NAIP 2014



T:\WG\38\GIS_33_00\GISRequest_11\FID\Deliverable_10\FID\ENVI29_15_BA_Mpbk_Ch3.mxd 20150929 4:56:05 PM

<ul style="list-style-type: none"> Suisun Marsh Boundary Action Area Other Facilities Other Facility Upstream River Legal Delta and Transmission Line Corridor Utility Features Point of Interconnection Substation Local Tap 	<ul style="list-style-type: none"> Point of Interconnection Substation Local Tap 500 kV (Existing) 500 kV (Proposed) 230 kV (Existing) 230 kV (Proposed) 230/34.5 kV (Proposed) 69 kV (Proposed) 	<ul style="list-style-type: none"> Engineering Features Intake Junction Structure Main Construction Shaft Ventilation/Access Shaft Canal HOR Gate Permanent Access Road Siphon 	<ul style="list-style-type: none"> Temporary Access Road Tunnel Tunnel Conveyor Canal Cofferdam Control Structure Dredging Electrical Substation Emergency Generator Facility Access Facility Grounds Fill Pad 	<ul style="list-style-type: none"> Forebay Forebay Embankment Forebay Inlet Structure Forebay Outlet Structure Forebay Overflow Forebay Overflow Structure Fuel Tank Gravity-Bypass Channel Spillway Intake MCC/Electrical Building Office Trailer 	<ul style="list-style-type: none"> Outlet Tower Overflow Containment Berm Piping Public Road Pumping Plant Sediment Basin Solids Lagoon Staging Storage Storage/Detention Tank Water Treatment Facility 	<ul style="list-style-type: none"> Permanent Subsurface Impact Permanent Surface Impact Temporary Surface Impact Reusable Tunnel Material Area Barge Unloading Facility Fuel Station Concrete Batch Plant
---	--	--	--	--	---	---

Sources: Diversion Facilities Delta Vision 2012; ICF Action Area 2015; DWR DCE Engineering CCO (rev 5b); NAIP 2014



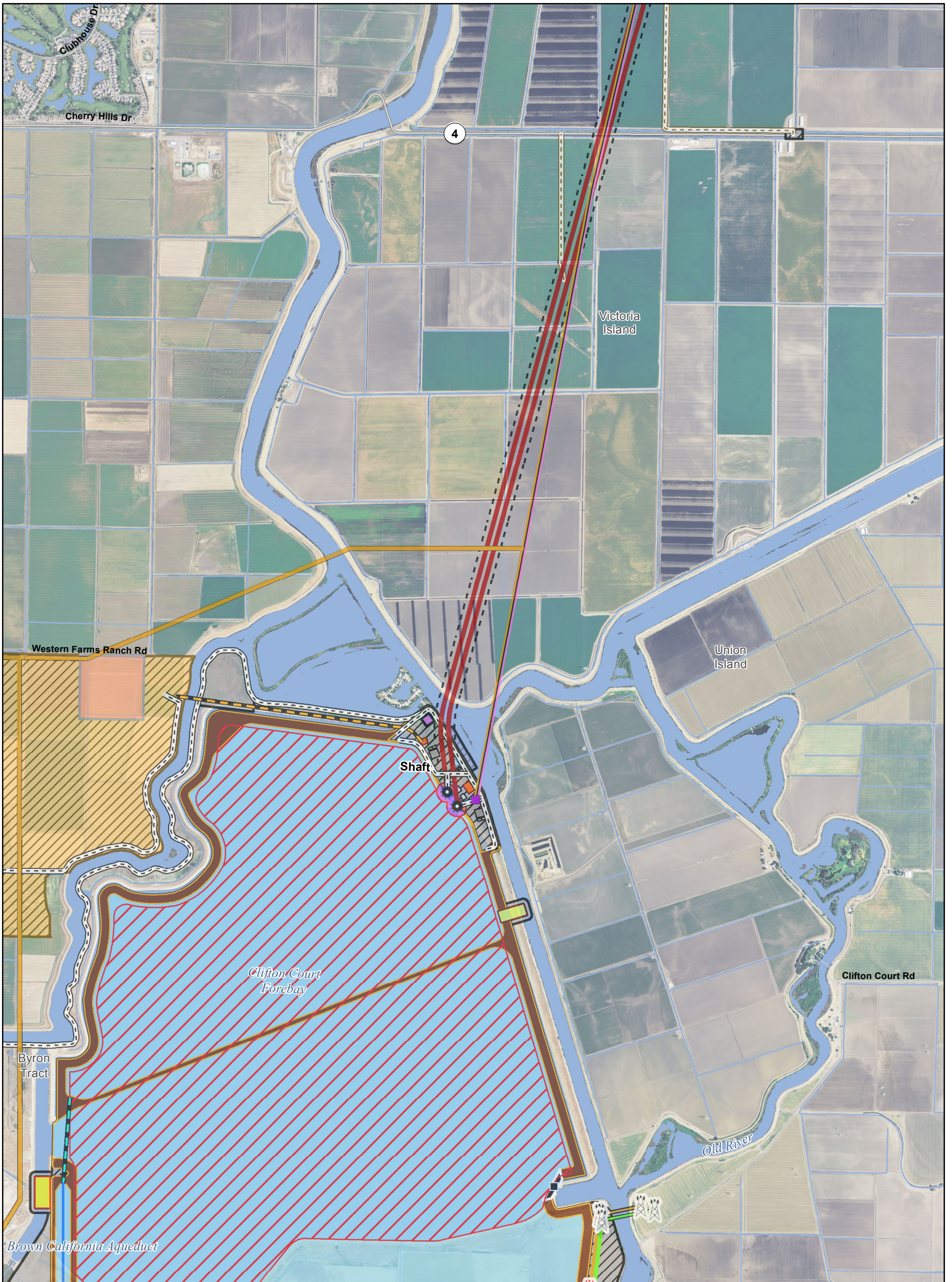
T:\WG138\GIS_33_00\GISRequest_11\FID\Deliverable_10\FEN\129_15_BA_Mpbk_Ch3.mxd 20150929 5:42:20 PM

<ul style="list-style-type: none"> Suisun Marsh Boundary Action Area Other Facilities Other Facility Upstream River Legal Delta and Transmission Line Corridor Utility Features Point of Interconnection Substation Local Tap 	<ul style="list-style-type: none"> Point of Interconnection Substation Local Tap 500 kV (Existing) 500 kV (Proposed) 230 kV (Existing) 230 kV (Proposed) 230/34.5 kV (Proposed) 69 kV (Proposed) 	<ul style="list-style-type: none"> Engineering Features Intake Junction Structure Main Construction Shaft Ventilation/Access Shaft Canal HOR Gate Permanent Access Road Siphon 	<ul style="list-style-type: none"> Temporary Access Road Tunnel Tunnel Conveyor Canal Cofferdam Control Structure Dredging Electrical Substation Emergency Generator Facility Access Facility Grounds Fill Pad 	<ul style="list-style-type: none"> Forebay Forebay Embankment Forebay Inlet Structure Forebay Outlet Structure Forebay Overflow Structure Forebay Overflow Structure Fuel Tank Gravity-Bypass Channel Spillway Intake MCC/Electrical Building Office Trailer 	<ul style="list-style-type: none"> Outlet Tower Overflow Containment Berm Piping Public Road Pumping Plant Sediment Basin Solids Lagoon Staging Area Storage Storage/Detention Tank Water Treatment Facility 	<ul style="list-style-type: none"> Permanent Subsurface Impact Permanent Surface Impact Temporary Surface Impact Reusable Tunnel Material Area Barge Unloading Facility Fuel Station Concrete Batch Plant
---	--	--	--	--	--	---

0 1,000 2,000
Feet

N

Sources: Diversion Facilities Delta Vision 2012; ICF Action Area 2015; DWR DCE Engineering CCO (rev 5b); NAIP 2014



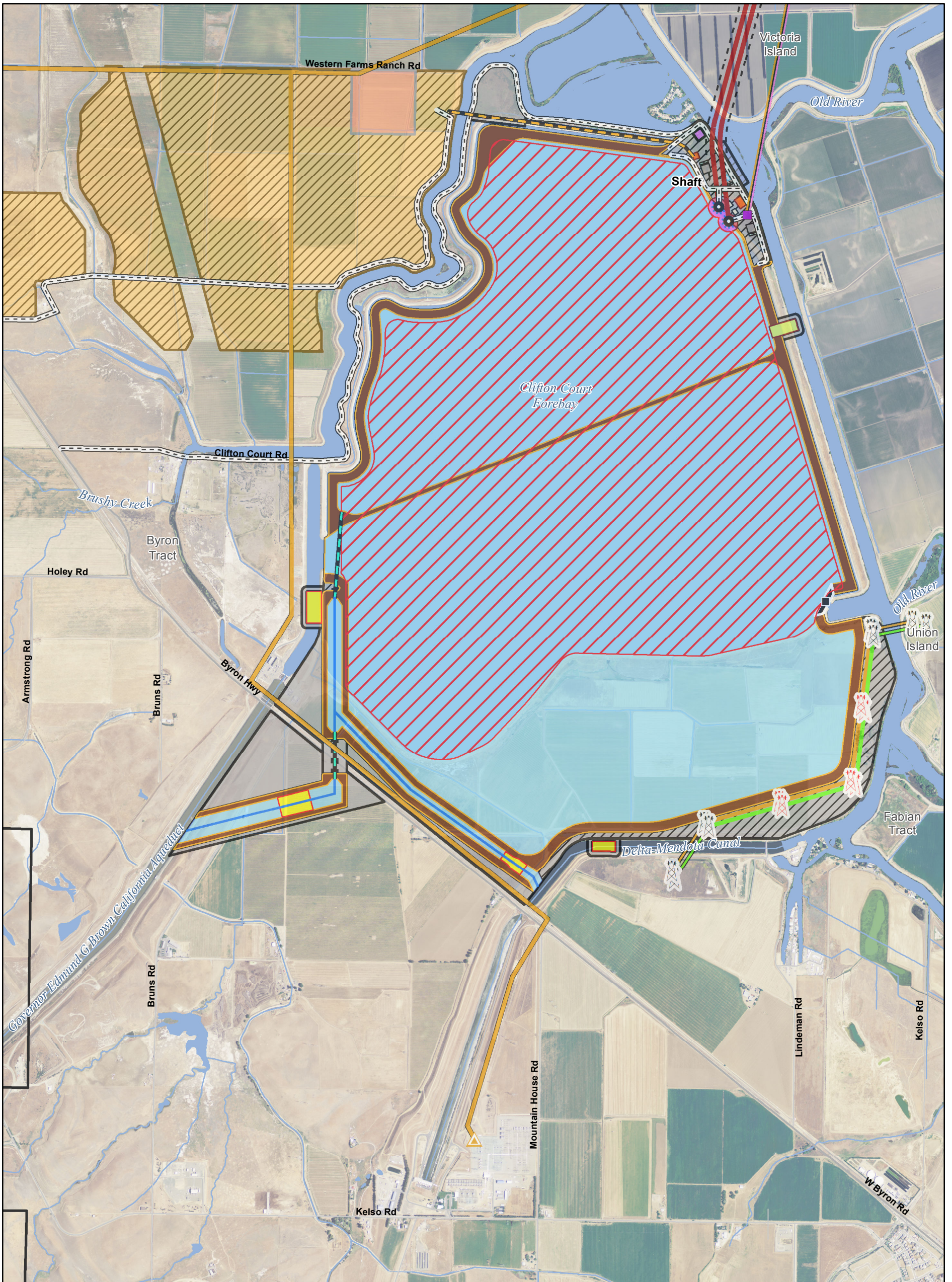
T:\WGIS\GIS_33_00\GISRequest_11\FID\Deliverable_10\FID\ENVI29_15_BA_Mpbk_Ch3.mxd 20150929 5:07:37 PM

<ul style="list-style-type: none"> Suisun Marsh Boundary Action Area Other Facilities Other Facility Upstream River Legal Delta and Transmission Line Corridor Utility Features Point of Interconnection Substation Local Tap 	<ul style="list-style-type: none"> Point of Interconnection Substation Local Tap 500 kV (Existing) 500 kV (Proposed) 230 kV (Existing) 230 kV (Proposed) 230/34.5 kV (Proposed) 69 kV (Proposed) 	<ul style="list-style-type: none"> Engineering Features Intake Junction Structure Main Construction Shaft Ventilation/Access Shaft Canal HOR Gate Permanent Access Road Siphon 	<ul style="list-style-type: none"> Temporary Access Road Tunnel Tunnel Conveyor Canal Cofferdam Control Structure Dredging Electrical Substation Emergency Generator Facility Access Facility Grounds Fill Pad 	<ul style="list-style-type: none"> Forebay Forebay Embankment Forebay Inlet Structure Forebay Outlet Structure Forebay Overflow Forebay Overflow Structure Fuel Tank Gravity-Bypass Channel Spillway Intake MCC/Electrical Building Office Trailer 	<ul style="list-style-type: none"> Outlet Tower Overflow Containment Berm Piping Public Road Pumping Plant Sediment Basin Solids Lagoon Staging Storage Storage/Detention Tank Water Treatment Facility 	<ul style="list-style-type: none"> Permanent Subsurface Impact Permanent Surface Impact Temporary Surface Impact Reusable Tunnel Material Area Barge Unloading Facility Fuel Station Concrete Batch Plant
---	--	--	--	--	---	---

0 1,000 2,000
Feet

N

Sources: Diversion Facilities Delta Vision 2012; ICF Action Area 2015; DWR DCE Engineering CCO (rev 5b); NAIP 2014



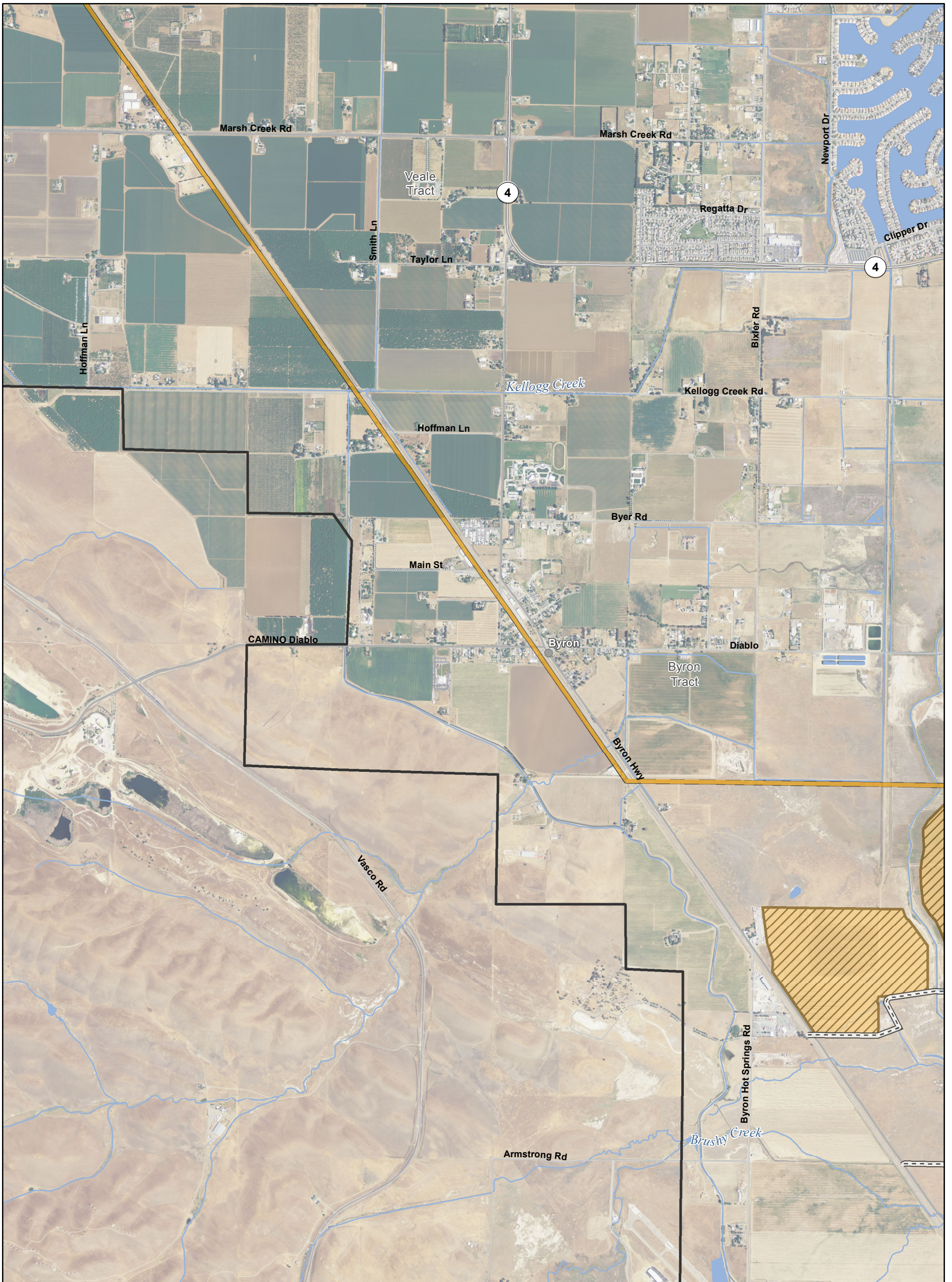
T:\WGI\38\GIS_33_00\GISRequest_11\FID\Deliverable_10\FEN\129_15_BA_Mpbk_Ch3.mxd 20150929 5:12:10 PM

<ul style="list-style-type: none"> Suisun Marsh Boundary Action Area Other Facilities Other Facility Upstream River Legal Delta and Transmission Line Corridor Utility Features Point of Interconnection Substation Local Tap 	<ul style="list-style-type: none"> Point of Interconnection Substation Local Tap 500 kV (Existing) 500 kV (Proposed) 230 kV (Existing) 230 kV (Proposed) 230/34.5 kV (Proposed) 69 kV (Proposed) 	<ul style="list-style-type: none"> Engineering Features Intake Junction Structure Main Construction Shaft Ventilation/Access Shaft Canal HOR Gate Permanent Access Road Siphon 	<ul style="list-style-type: none"> Temporary Access Road Tunnel Tunnel Conveyor Canal Cofferdam Control Structure Dredging Electrical Substation Emergency Generator Facility Access Facility Grounds Fill Pad 	<ul style="list-style-type: none"> Forebay Forebay Embankment Forebay Inlet Structure Forebay Outlet Structure Forebay Overflow Structure Forebay Overflow Structure Fuel Tank Gravity-Bypass Channel Spillway Intake MCC/Electrical Building Office Trailer 	<ul style="list-style-type: none"> Outlet Tower Overflow Containment Berm Piping Public Road Pumping Plant Sediment Basin Solids Lagoon Staging Storage Storage/Retention Tank Water Treatment Facility 	<ul style="list-style-type: none"> Permanent Subsurface Impact Permanent Surface Impact Temporary Surface Impact Reusable Tunnel Material Area Barge Unloading Facility Fuel Station Concrete Batch Plant
---	--	--	--	--	---	---

0 1,000 2,000
Feet

N

Sources: Diversion Facilities Delta Vision 2012; ICF Action Area 2015; DWR DCE Engineering CCO (rev 5b); NAIP 2014



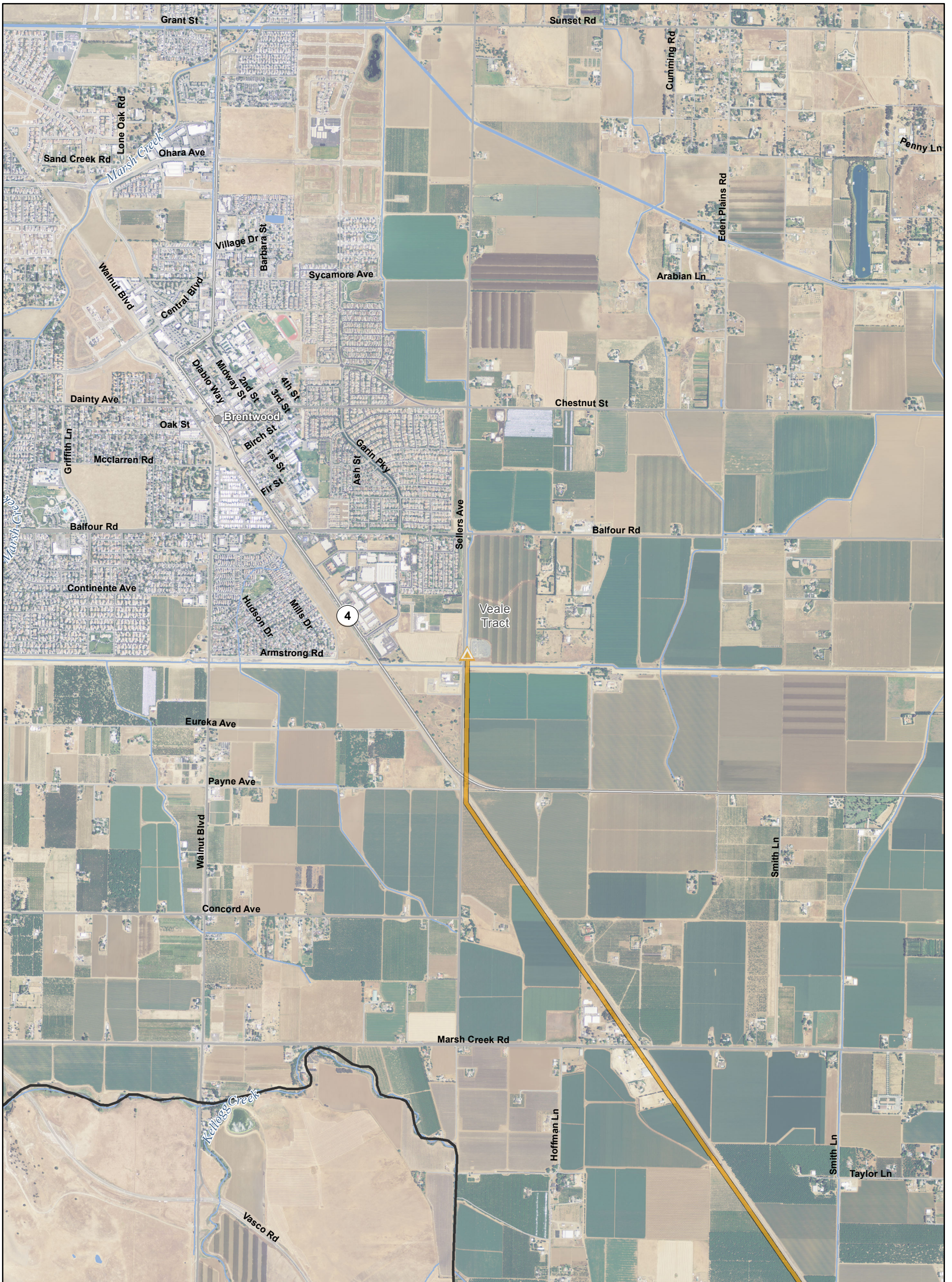
T:\WGI\38\GIS_33_00\GISRequest_11\FID\Deliverable_10\ENVI\29_15_BA_Mpbk_Ch3.mxd 20150929 5:16:37 PM

<ul style="list-style-type: none"> Suisun Marsh Boundary Action Area Other Facilities Other Facility Upstream River Legal Delta and Transmission Line Corridor Utility Features Point of Interconnection Substation Local Tap 	<ul style="list-style-type: none"> Substation Local Tap 500 kV (Existing) 500 kV (Proposed) 230 kV (Existing) 230 kV (Proposed) 230/34.5 kV (Proposed) 69 kV (Proposed) 	<ul style="list-style-type: none"> Engineering Features Intake Junction Structure Main Construction Shaft Ventilation/Access Shaft Canal HOR Gate Permanent Access Road Siphon 	<ul style="list-style-type: none"> Temporary Access Road Tunnel Tunnel Conveyor Canal Cofferdam Control Structure Dredging Electrical Substation Emergency Generator Facility Access Facility Grounds Fill Pad 	<ul style="list-style-type: none"> Forebay Forebay Embankment Forebay Inlet Structure Forebay Outlet Structure Forebay Overflow Forebay Overflow Structure Fuel Tank Gravity-Bypass Channel Spillway Intake MCC/Electrical Building Office Trailer 	<ul style="list-style-type: none"> Outlet Tower Overflow Containment Berm Piping Public Road Pumping Plant Sediment Basin Solids Lagoon Staging Storage Storage/Detention Tank Water Treatment Facility 	<ul style="list-style-type: none"> Permanent Subsurface Impact Permanent Surface Impact Temporary Surface Impact Reusable Tunnel Material Area Barge Unloading Facility Fuel Station Concrete Batch Plant
---	---	--	--	--	---	---

0 1,000 2,000
Feet

N

Sources: Diversion Facilities Delta Vision 2012; ICF Action Area 2015; DWR DCE Engineering CCO (rev 5b); NAIP 2014



T:\WGI\38\GIS_33_00\GISRequest_11\FID\Deliverable_10\FEN\129_15_BA_Mpbk_Ch3.mxd 20150929 5:21:38 PM

<ul style="list-style-type: none"> Suisun Marsh Boundary Action Area Other Facilities Other Facility Upstream River Legal Delta and Transmission Line Corridor Utility Features Point of Interconnection Substation Local Tap 	<ul style="list-style-type: none"> Substation Local Tap 500 kV (Existing) 500 kV (Proposed) 230 kV (Existing) 230 kV (Proposed) 230/34.5 kV (Proposed) 69 kV (Proposed) 	<ul style="list-style-type: none"> Engineering Features Intake Junction Structure Main Construction Shaft Ventilation/Access Shaft Canal HOR Gate Permanent Access Road Siphon 	<ul style="list-style-type: none"> Temporary Access Road Tunnel Tunnel Conveyor Canal Cofferdam Control Structure Dredging Electrical Substation Emergency Generator Facility Access Facility Grounds Fill Pad 	<ul style="list-style-type: none"> Forebay Forebay Embankment Forebay Inlet Structure Forebay Outlet Structure Forebay Overflow Forebay Overflow Structure Fuel Tank Gravity-Bypass Channel Spillway Intake MCC/Electrical Building Office Trailer 	<ul style="list-style-type: none"> Outlet Tower Overflow Containment Berm Piping Public Road Pumping Plant Sediment Basin Solids Lagoon Staging Storage Storage/Detention Tank Water Treatment Facility 	<ul style="list-style-type: none"> Permanent Subsurface Impact Permanent Surface Impact Temporary Surface Impact Reusable Tunnel Material Area Barge Unloading Facility Fuel Station Concrete Batch Plant
---	---	--	--	--	---	---

0 1,000 2,000
Feet

N

Sources: Diversion Facilities Delta Vision 2012; ICF Action Area 2015; DWR DCE Engineering CCO (rev 5b); NAIP 2014

Y:\BiologicalAssess\ESA_Sect7_Permitting\ENV128_15_BA_Mpbk_Ch3.mxd 20151223 11:50:19 AM



<ul style="list-style-type: none"> Suisun Marsh Boundary Action Area Other Facility Other Facility Upstream River Legal Delta and Transmission Line Corridor Utility Features Point of Interconnection Substation Local Tap 	<ul style="list-style-type: none"> Point of Interconnection Substation Local Tap 500 kV (Existing) 500 kV (Proposed) 230 kV (Existing) 230 kV (Proposed) 230/34.5 kV (Proposed) 69 kV (Proposed) Engineering Features Intake Junction Structure 	<ul style="list-style-type: none"> Main Construction Shaft Ventilation/Access Shaft Canal HOR Gate Permanent Access Road Siphon Temporary Access Road Tunnel Tunnel Conveyor 	<ul style="list-style-type: none"> Canal Cofferdam Control Structure Dredging Electrical Substation Emergency Generator Facility Access Road Facility Grounds Fill Pad Forebay Forebay Embankment Forebay Inlet Structure 	<ul style="list-style-type: none"> Forebay Outlet Structure Forebay Overflow Structure Fuel Tank Gravity-Bypass Channel Spillway Intake MCC/Electrical Building Office Trailer Outlet Tower 	<ul style="list-style-type: none"> Overflow Containment Berm Piping Public Road Pumping Plant Sediment Basin Solids Lagoon Staging Area Storage Storage/Detention Tank Water Treatment Facility 	<ul style="list-style-type: none"> Permanent Subsurface Impact Permanent Surface Impact Temporary Surface Impact Reusable Tunnel Material Area Barge Unloading Facility Fuel Station Concrete Batch Plant
---	---	--	---	---	---	---

Geotechnical Investigation Zones are not shown in the mapbook. For information on the location of the geotechnical exploration sites refer to Appendix 3.G.

Sources: Diversion Facilities Delta Vision 2012; ICF Action Area 2015; DWR DCE Engineering CCO (rev 5b); NAIP 2014



T:\WG\38\GIS_33_00\GISRequest_11\FID\Deliverable_10\FID\ENVI29_15_BA_Mpbk_Ch3.mxd 20150929 5:31:04 PM

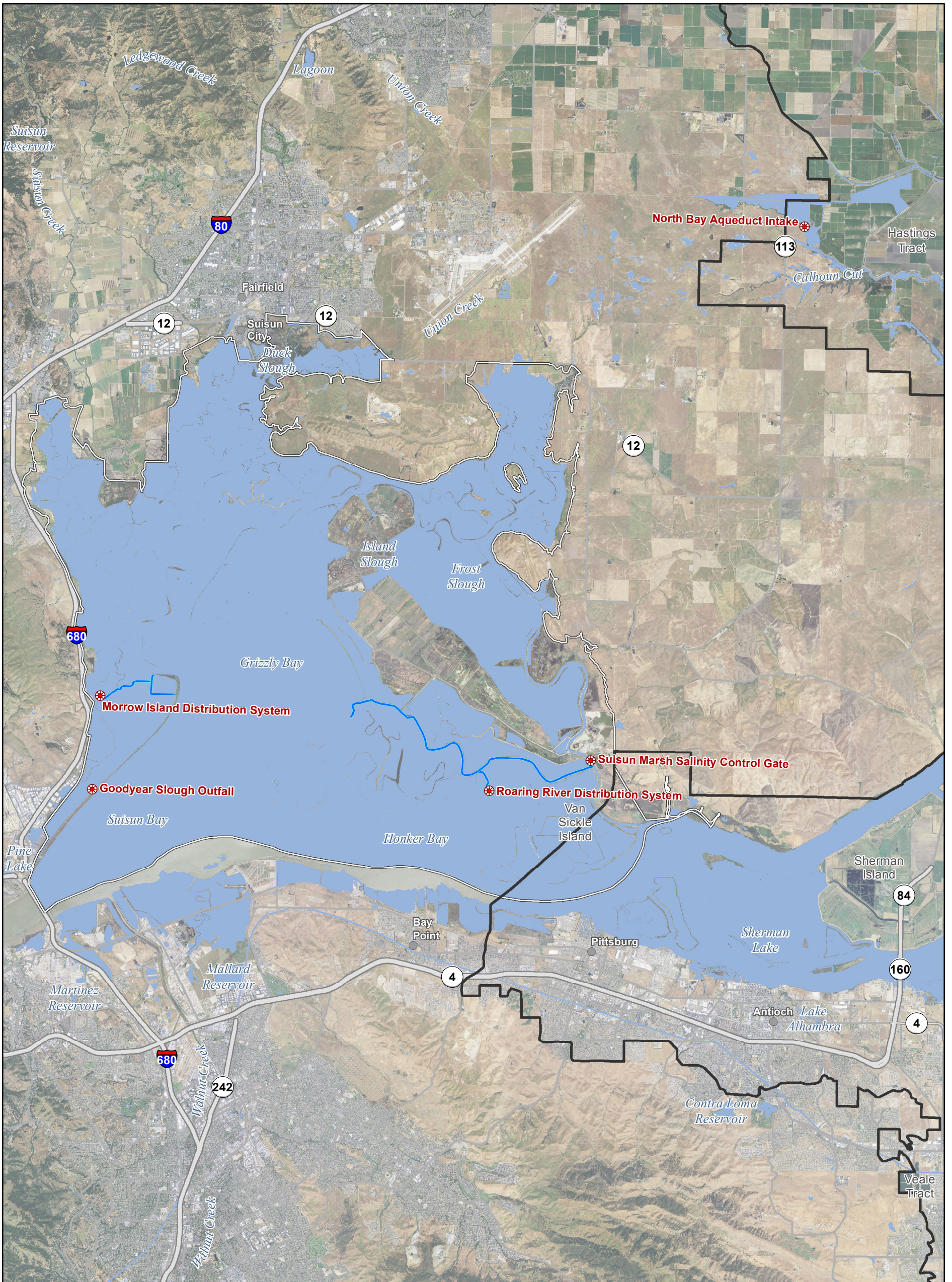
<ul style="list-style-type: none"> Suisun Marsh Boundary Action Area Other Facilities Other Facility Upstream River Legal Delta and Transmission Line Corridor Utility Features Point of Interconnection Substation Local Tap 	<ul style="list-style-type: none"> Substation Local Tap 500 kV (Existing) 500 kV (Proposed) 230 kV (Existing) 230 kV (Proposed) 230/34.5 kV (Proposed) 69 kV (Proposed) 	<ul style="list-style-type: none"> Engineering Features Intake Junction Structure Main Construction Shaft Ventilation/Access Shaft Canal HOR Gate Permanent Access Road Siphon 	<ul style="list-style-type: none"> Temporary Access Road Tunnel Tunnel Conveyor Canal Cofferdam Control Structure Dredging Electrical Substation Emergency Generator Facility Access Facility Grounds Fill Pad 	<ul style="list-style-type: none"> Forebay Forebay Embankment Forebay Inlet Structure Forebay Outlet Structure Forebay Overflow Forebay Overflow Structure Fuel Tank Gravity-Bypass Channel Spillway Intake MCC/Electrical Building Office Trailer 	<ul style="list-style-type: none"> Outlet Tower Overflow Containment Berm Piping Public Road Pumping Plant Sediment Basin Solids Lagoon Staging Storage Storage/Detention Tank Water Treatment Facility 	<ul style="list-style-type: none"> Permanent Subsurface Impact Permanent Surface Impact Temporary Surface Impact Reusable Tunnel Material Area Barge Unloading Facility Fuel Station Concrete Batch Plant
---	---	--	--	--	---	---

0 1,000 2,000

Feet

N

Sources: Diversion Facilities Delta Vision 2012; ICF Action Area 2015; DWR DCE Engineering CCO (rev 5b); NAIP 2014



T:\WG\38\GIS_33_00\GISRequest_11\F\Deliverable_10\EN\129_15_BA_Mpbk_Ch3.mxd 20150929 5:15:30 PM

<ul style="list-style-type: none"> Suisun Marsh Boundary Action Area Other Facilities Other Facility Upstream River Legal Delta and Corridor Transmission Line Utility Features Point of Interconnection Substation Local Tap 	<ul style="list-style-type: none"> Substation Local Tap 500 kV (Existing) 500 kV (Proposed) 230 kV (Existing) 230 kV (Proposed) 230/34.5 kV (Proposed) 69 kV (Proposed) 	<ul style="list-style-type: none"> Engineering Features Intake Junction Structure Main Construction Shaft Ventilation/Access Shaft Canal HOR Gate Permanent Access Road Siphon 	<ul style="list-style-type: none"> Temporary Access Road Tunnel Tunnel Conveyor Canal Cofferdam Control Structure Dredging Electrical Substation Emergency Generator Facility Access Road Facility Grounds Fill Pad 	<ul style="list-style-type: none"> Forebay Forebay Embankment Forebay Inlet Structure Forebay Outlet Structure Forebay Overflow Forebay Overflow Structure Fuel Tank Gravity-Bypass Channel Spillway Intake MCC/Electrical Building Office Trailer 	<ul style="list-style-type: none"> Outlet Tower Overflow Containment Berm Piping Public Road Pumping Plant Sediment Basin Solids Lagoon Staging Area Storage Storage/Detention Tank Water Treatment Facility 	<ul style="list-style-type: none"> Permanent Subsurface Impact Permanent Surface Impact Temporary Surface Impact Reusable Tunnel Material Area Barge Unloading Facility Fuel Station Concrete Batch Plant
---	---	--	---	--	--	---

0 6,000 12,000
Feet

N

Sources: Diversion Facilities Delta Vision 2012; ICF Action Area 2015; DWR DCE Engineering CCO (rev 5b); NAIP 2014