

**1 Appendix 3.I, Deconstruction Action Charts**

# Section 7 Consultation for Listed Fishes: Deconstruction of the Action – California WaterFix (Proposed Action is to improve California’s water delivery system)

Future Actions Requiring Separate ESA Consultation	CVP and SWP Operational Criteria in Environmental Baseline that won't Change as a Result of the Proposed Action	Discretionary Actions with No Effects on Listed Fish Species or Critical Habitat	Water Conveyance Facility Construction	CVP and SWP Operational Criteria that will Change as a Result of the Proposed Action	Operation of New and Existing Water Conveyance Facilities	Conservation Measures	Maintenance of New and Existing Water Conveyance Facilities
California Eco Restore	D-1641 Compliance	Governance	Geotechnical Exploration	North Delta Bypass Flows	North Delta Intakes (Fish Screens)	Measures to Compensate for Adverse Effects to Covered Species	North Delta Intakes
CVP-wide OCAP	USFWS 2008 BiOP requirements included in Environmental Baseline	New Water Conveyance Facilities Design	Construction Support Facilities	South Delta Export Operations (Export Rates and OMR Flows)	Tunnels	Localized Reduction in Predatory Fishes	Tunnels
SWRCB Minimum Instream Flow Requirements	NMFS 2009 BiOP requirements included in Environmental Baseline		Pre-Construction Surveys and Studies	Head of Old River Operable Barrier Operating Criteria	Intermediate Forebay	Collaborative Science and Monitoring	Intermediate Forebay
Construction and Operation of the New North Bay Aqueduct Alternative Intake	Suisun Marsh Salinity Control Gates Operations		Avoidance and Minimization Measures	Spring Outflow	North Clifton Court Forebay	Adaptive Management Program	Clifton Court Forebay
Adaptive Management Recommendations, Decisions, and Actions, if Affects Fall Outside of the Operational Ranges Evaluated in the BO	Other Existing Regulatory and Contractual Obligations in the Baseline (as Described in Appendix 5A)		North Delta Intakes	Minimum Flow Criteria at Rio Vista from January through August	South Clifton Court Forebay		Connections to Banks/Jones Pumping Plants
			Tunnels		Connections to Banks/Jones Pumping Plants		South Delta Facilities Power Supply and Grid Connections
			Intermediate Forebay		South Delta Facilities Power Supply and Grid Connections		Existing South Delta Export Facilities
			Clifton Court Forebay		Existing South Delta Export Facilities		Head of Old River Operable Barrier
			Connections to Banks/Jones Pumping Plants		Head of Old River Operable Barrier		
			Power Supply and Grid Connections				
			Head of Old River Operable Barrier				

# Section 7 Consultation: Deconstruction of the Action – California WaterFix

Future Actions Requiring Separate ESA Consultation

California Eco Restore

CVP-wide OCAP

SWRCB Minimum Instream Flow Requirements

Construction and Operation of the New North Bay Aqueduct Alternative Intake

Adaptive Management Recommendations, Decisions, and Actions, if effects Fall Outside of the Operational Ranges Evaluated in the BO

Ongoing Regulatory Requirements in Environmental Baseline that will not Change as a Result of the Proposed Action  
(Second Level Headers are Key Criteria that will not change as a result of the Proposed Action)

D-1641 Compliance

Delta Cross-Channel Gates Operations

Export:Inflow Ratio

Winter & Summer Outflow

USFWS 2008 BiOP requirements included in Environmental Baseline

Fall Outflow

NMFS 2009 BiOP requirements included in Environmental Baseline

Suisun Marsh Salinity Control Gates Operations

Other Existing Regulatory and Contractual Obligations in the Environmental Baseline (As Described in Appendix 5A)

Discretionary Actions with No Effects on Listed Fish Species or Critical Habitat

Governance

New Water Conveyance Facilities Design

**Note:**

The USFWS 2008 and NMFS 2009 BiOps are part of the consultation process but are not part of the Proposed Action, per se. The consultation is on delivering water and not just the changes to the infrastructure/operations associated with delivering water.

# Conveyance Facility Construction – California WaterFix

North Delta Intakes

Tunnels

Intermediate Forebay

Clifton Court Forebay

Connections to Banks/ Jones Pumping Plants

Power Supply and Grid Connections

Head of Old River Operable Barrier

## Geotechnical Exploration

Drilling for Soil Sampling

Cone Penetrometer Testing (CPT)

Installation of Temporary Groundwater Pumping Wells and Piezometers

Backfilling Bore Holes, CPTs, and Piezometers with Cement Bentonite

Geophysical Testing

Pressure Meter Testing

Dissolved Gas Sampling

Aquifer Testing

Excavation of Test Pits

## Construction Support Facilities

Concrete Batch Plants

Barge Landings

Pile Driving

Barge Landing Construction

## Pre-Construction Surveys and Studies

Studies to Inform Design Criteria

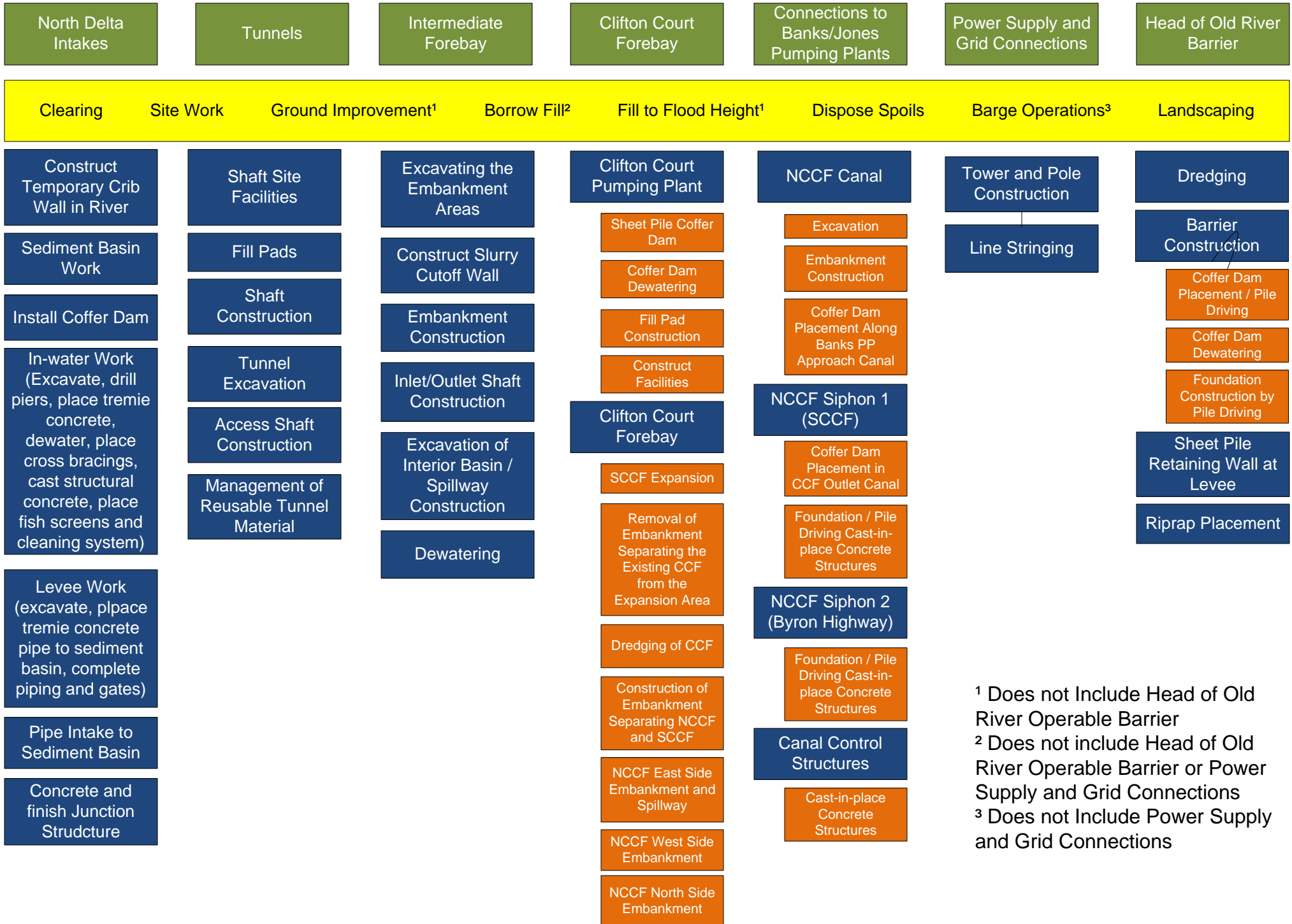
Studies to Establish Biological Baselines

## Avoidance and Minimization Measures

Standard

Species-specific

# Conveyance Facility Construction- California WaterFix



<sup>1</sup> Does not Include Head of Old River Operable Barrier  
<sup>2</sup> Does not include Head of Old River Operable Barrier or Power Supply and Grid Connections  
<sup>3</sup> Does not Include Power Supply and Grid Connections

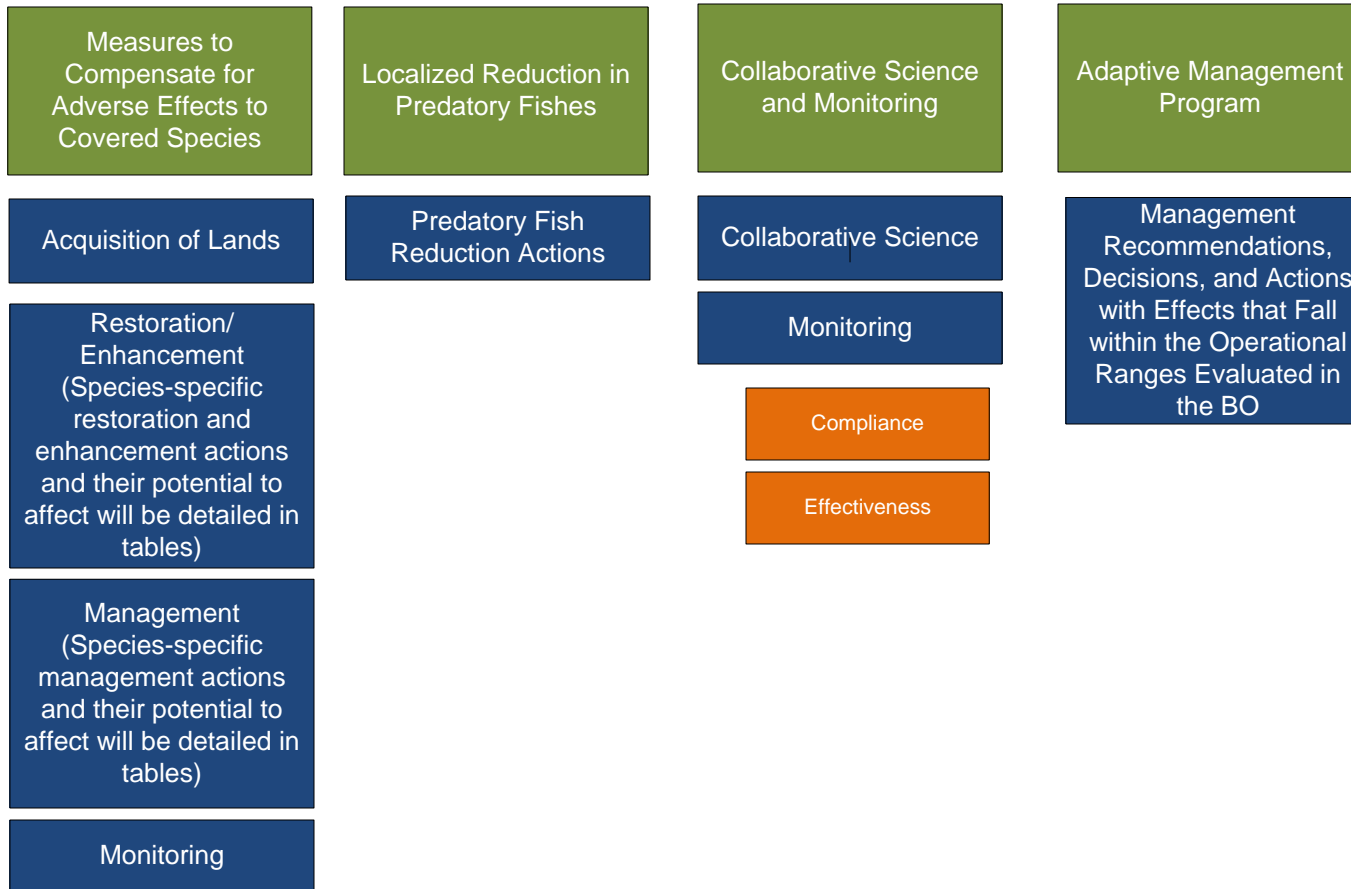
# CVP and SWP Operational Criteria that will Change as a Result of the Proposed Action – California WaterFix

North Delta Bypass Flows	South Delta Export Operations (Export Rates and OMR Flows)	Head of Old River Operable Barrier Criteria	Spring Outflow	Minimum Flow Criteria at Rio Vista from January through August
Initial Pulse Protection	October – November: San Joaquin River Pulse-related Actions	October 1 – November 30: RTO Management and SJR Pulse Flow-related Gate Operations	March, April, and May: Additional Flow to Maintain Average Delta Outflow that would Occur under the USFWS and NMFS BiOps	January-August: Flows will Exceed 3,000 CFS
Post-pulse Criteria	December: OMR-related Actions	January: Gate Closures Subject to RTO when Salmon Fry are Migrating		September-December: Flows per D-1641
	January-February: OMR-related Actions	February- June 15:: Gate Closures Subject to RTO		
	March: OMR-related Actions	June 16-September 30:: Gates Open		
	April-May: OMR-related Actions			
	June: OMR-related Actions			
	July, August, and September: No OMR Flow Constraints			

# Operation of New and Existing Water Conveyance Facilities – CA WaterFix



# Conservation Measures – California WaterFix





# Maintenance of New and Existing Water Conveyance Facilities – CA WaterFix

North Delta Intakes	Tunnels	Intermediate Forebay	Clifton Court Forebay	Connections to Banks/ Jones Pumping Plants	South Delta Facilities Power Supply and Grid Connections	Head of Old River Operable Barrier	Existing South Delta Facilities
Intake Facilities	Dewatering	Vegetation Control on Embankments	Pond Weed Harvesting	Erosion Control	Maintenance Conducted by Utilities Supplying Power	Gate Maintenance	Maintenance and Replacement Activities to Maintain the Capacity and Operational Features of the CVP/SWP South Delta Facilities
Dewatering	Routine Inspection	Rodent Control on Embankment	Trash Rack Cleaning	Vegetation Control		Maintenance of motors, compressors, and control system,	
Sediment Removal	Sediment Removal	Embankment Repairs	Vegetation Control on Embankments	Rodent Control		Dredging	
Debris Removal		Maintenance of roller gates, radial gates, and stop logs	Rodent Control on Embankment	Embankment Repairs			
Fish Screens		Removal and disposal of Debris from Spillway	Embankment Repairs	Monitoring of Seepage Flows			
Biofouling		Dredging	Maintenance of roller gates, radial gates, and stop logs	Dredging			
Corrosion			Removal and disposal of Debris from Spillway				
Sediment Basins and Drying Lagoons			Dredging				