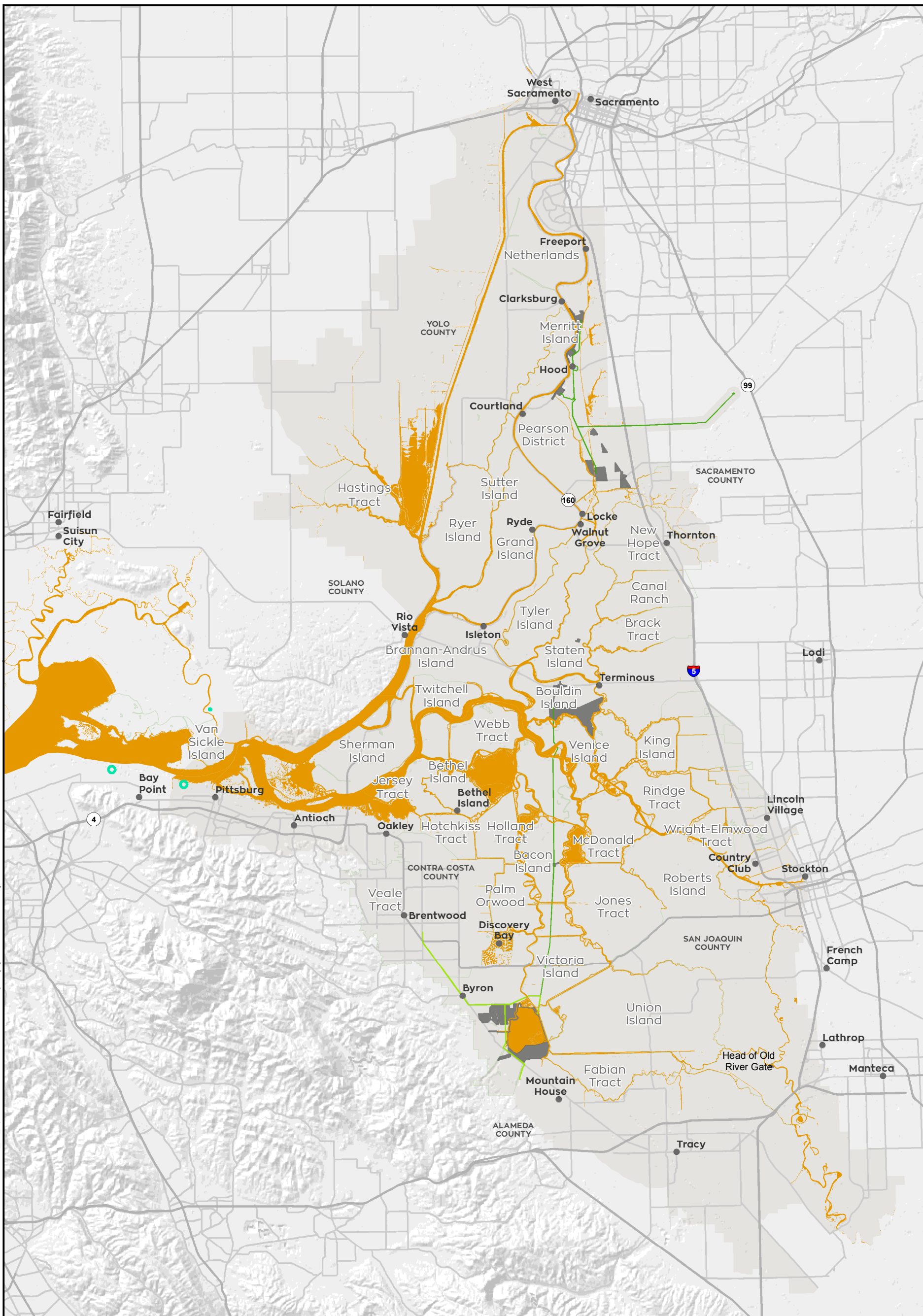


T:\WGI-38\GIS_33_00\GISRequest_11\F\Deliverable_10\EN\EN126_15\EN\EN126_15_SpeciesDistribution.mxd 20151221 [cslb] [Doc No: GIS-00204]



● City	California Least Tern	■ Construction Surface Impact
□ Delta Islands	■ Modeled Foraging Habitat	■ Permanent Transmission Lines
Action Area	■ Nesting Colony Occurrences	■ Temporary Transmission Lines
■ Legal Delta and Transmission Line Corridor		

N

0 27,500 Feet

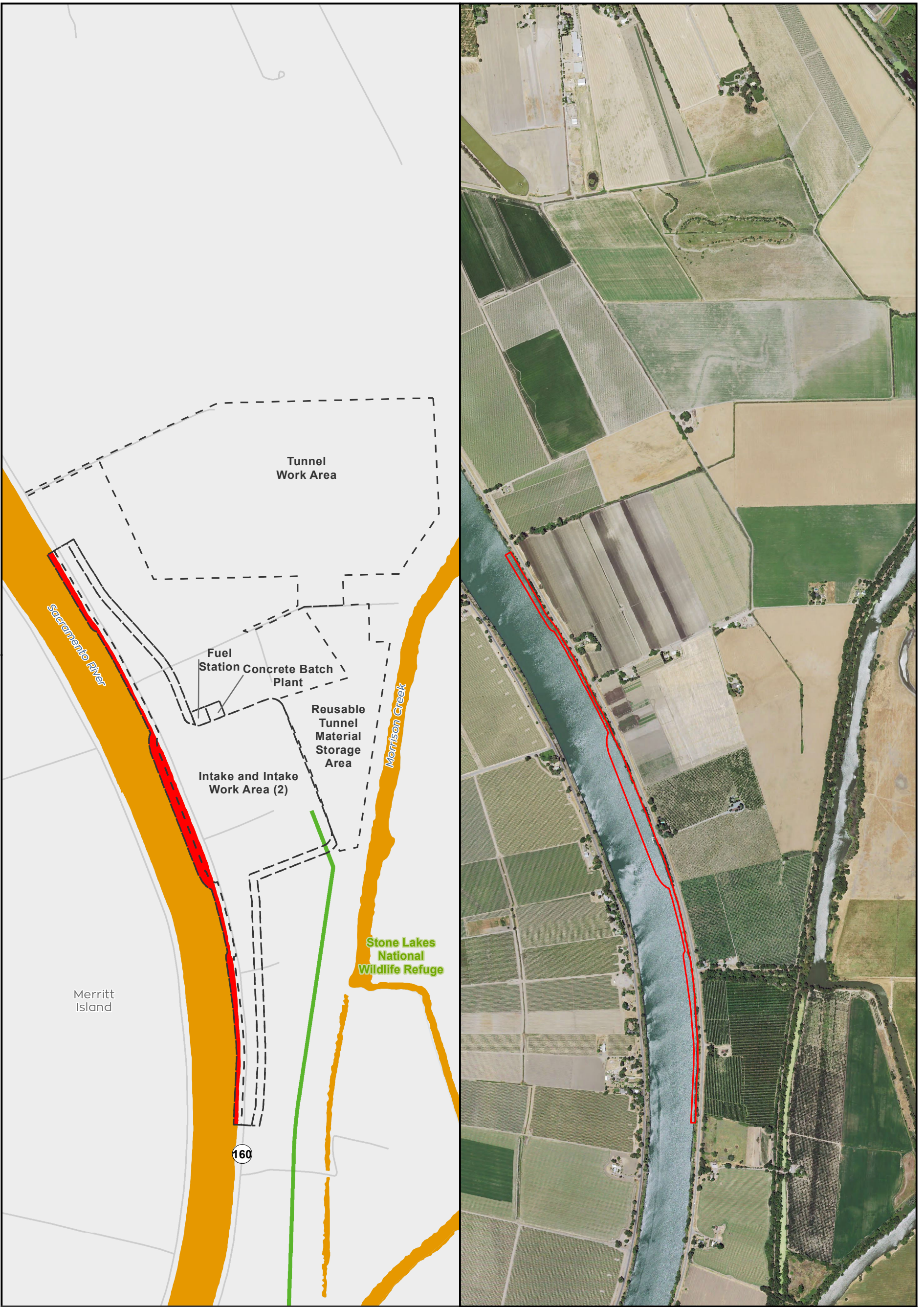
** Temporary work areas may be restored after construction is complete, however, for the purposes of impact analysis, the effect is considered permanent

Sources: CCO Conveyance, CA WaterFix 2015; Species Occurrences, ICF 2013; Modeled Habitat, ICF 2013, ICF 2015; Critical Habitat, USFWS 2012



**Impacts to California Least Tern Modeled Habitat from Water Conveyance Facility Construction
Modified Pipeline Tunnel/Clifton Court Forebay Option
Overview**

T:\WGI-38\GIS_33_00\GISRequest_11\F\Deliverable_11\F\ENV\126_15\SpeciesDistribution_2pane_20151029.mxd 20151029 [clsb] [Doc No: GIS-00204]



● City
 — State and Interstate Highways
 — Major roads
 — Delta Island

California Least Tern Modeled Habitat
 ■ Modeled Foraging Habitat
 ■ Impacted Foraging Habitat

--- Conveyance Construction Footprint
 ■ Permanent Transmission Lines
 ■ Temporary Transmission Lines

0 1,200 Feet

** Temporary work areas may be restored after construction is complete, however, for the purposes of impact analysis, the effect is considered permanent.

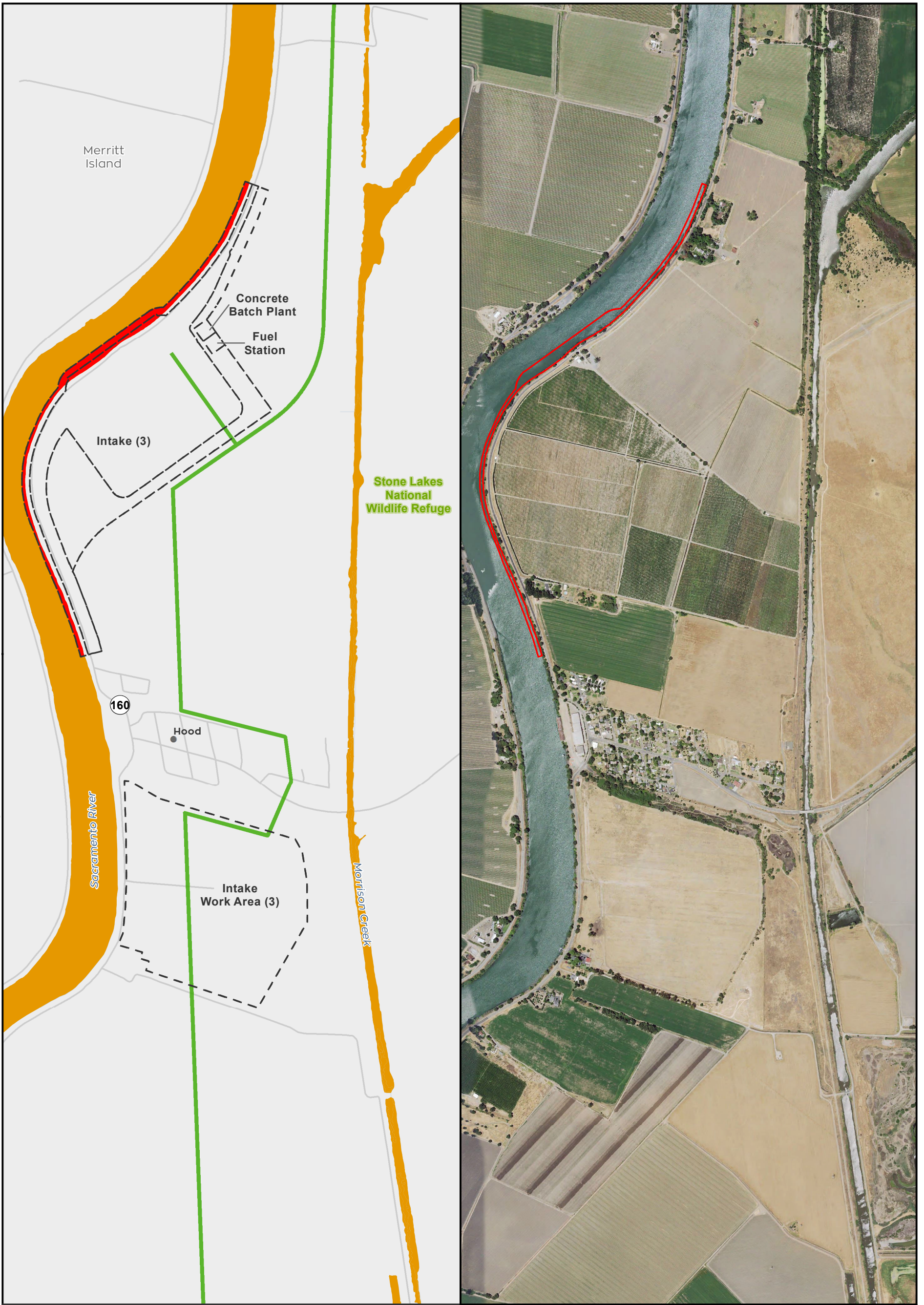
** The location of the transmission lines have not been finalized. Transmission structures will be constructed to have the least impact to the surrounding habitats.

Sources: CCO Conveyance, CA WaterFix 2015; Species Occurrences, ICF 2013; Modeled Habitat, ICF 2013, ICF 2015; NAIP 2014



**Impacts to California Least Tern Modeled Habitat from Water Conveyance Facility Construction
 Modified Pipeline Tunnel/Clifton Court Forebay Option
 North Delta Intakes - Intake 2
 Figure 6.4-2 of 6.4-14**

T:\WGI-38\GIS_33_00\GISRequest_11\F\Deliverable_10\F\ENV\126_15\SpeciesDistribution_2pane_20151029 [clsib] [Doc No: GIS-00204]

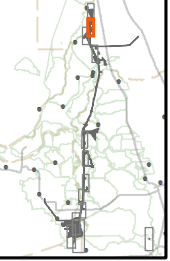


- City
 - State and Interstate Highways
 - Major roads
 - Delta Island
- California Least Tern Modeled Habitat**
- Modeled Foraging Habitat
 - Impacted Foraging Habitat
- Conveyance Construction Footprint
 - Permanent Transmission Lines
 - Temporary Transmission Lines

N 0 1,200 Feet

** Temporary work areas may be restored after construction is complete, however, for the purposes of impact analysis, the effect is considered permanent.

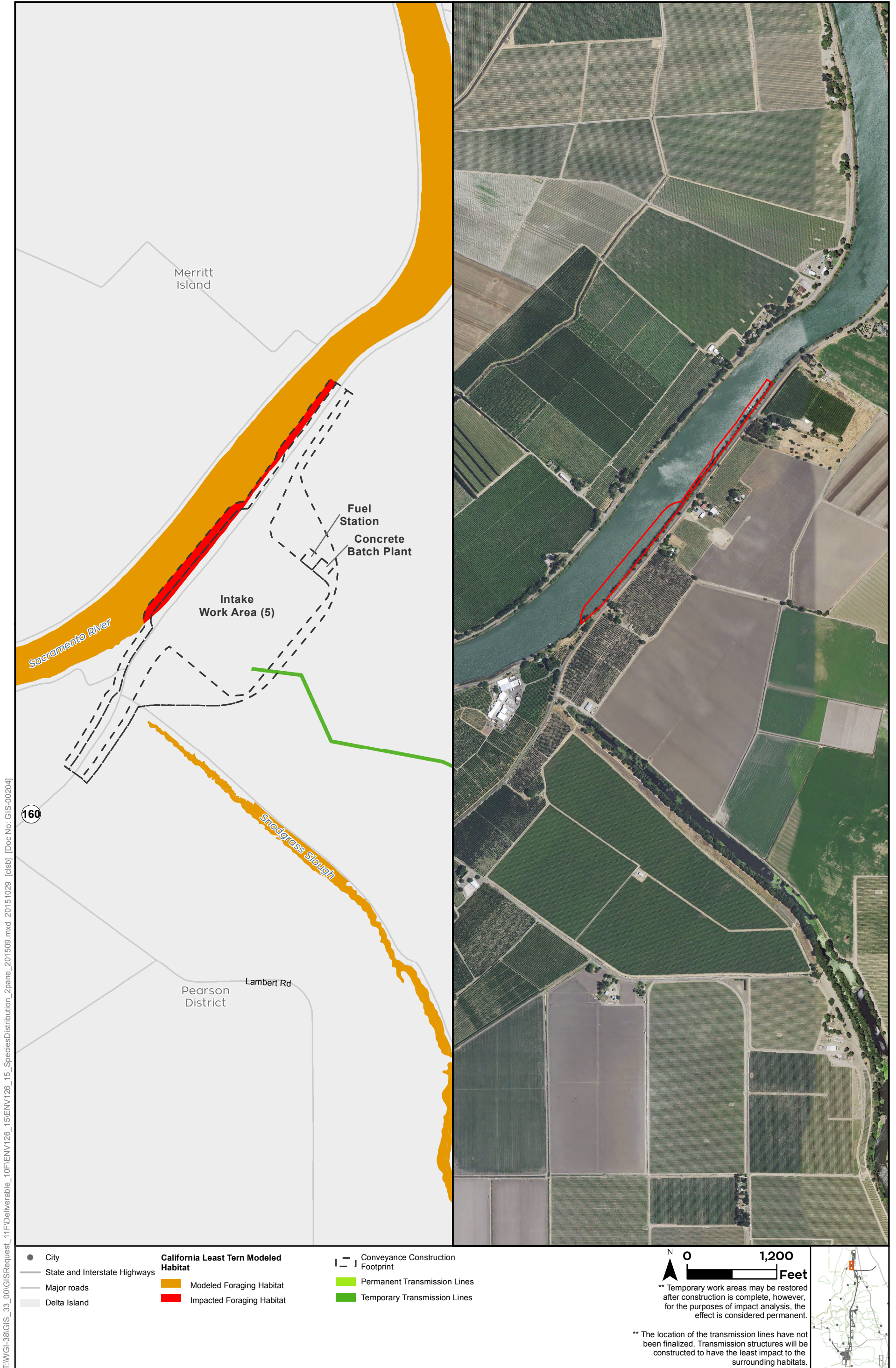
** The location of the transmission lines have not been finalized. Transmission structures will be constructed to have the least impact to the surrounding habitats.



Sources: CCO Conveyance, CA WaterFix 2015; Species Occurrences, ICF 2013; Modeled Habitat, ICF 2013, ICF 2015; NAIP 2014



**Impacts to California Least Tern Modeled Habitat from Water Conveyance Facility Construction
Modified Pipeline Tunnel/Clifton Court Forebay Option
North Delta Intakes - Intake 3
Figure 6.4-3 of 6.4-14**



T:\WGI-38\GIS_33_00\GISRequest_11\F\Deliverable_11\F\ENV\126_15\ENV\126_15_SpeciesDistribution_2pane_201509.mxd 20151029 [clsb] [Doc No: GIS-00204]

Sources: CCO Conveyance, CA WaterFix 2015; Species Occurrences, ICF 2013; Modeled Habitat, ICF 2013, ICF 2015; NAIP 2014



Impacts to California Least Tern Modeled Habitat from Water Conveyance Facility Construction
Modified Pipeline Tunnel/Clifton Court Forebay Option
North Delta Intakes - Intake 5
Figure 6.4-4 of 6.4-14

T:\WGI-38\GIS_33_00\GISRequest_11\F\Deliverable_10\EN\126_15\EN\126_15_SpeciesDistribution_2pane_201509.mxd 20151029 [clsb] [Doc No: GIS-00204]



- City
- State and Interstate Highways
- Major roads
- Delta Island
- California Least Tern Modeled Habitat**
- Modeled Foraging Habitat
- Impacted Foraging Habitat
- Conveyance Construction Footprint
- Permanent Transmission Lines
- Temporary Transmission Lines

N 0 1,100 Feet

** Temporary work areas may be restored after construction is complete, however, for the purposes of impact analysis, the effect is considered permanent.

** The location of the transmission lines have not been finalized. Transmission structures will be constructed to have the least impact to the surrounding habitats.

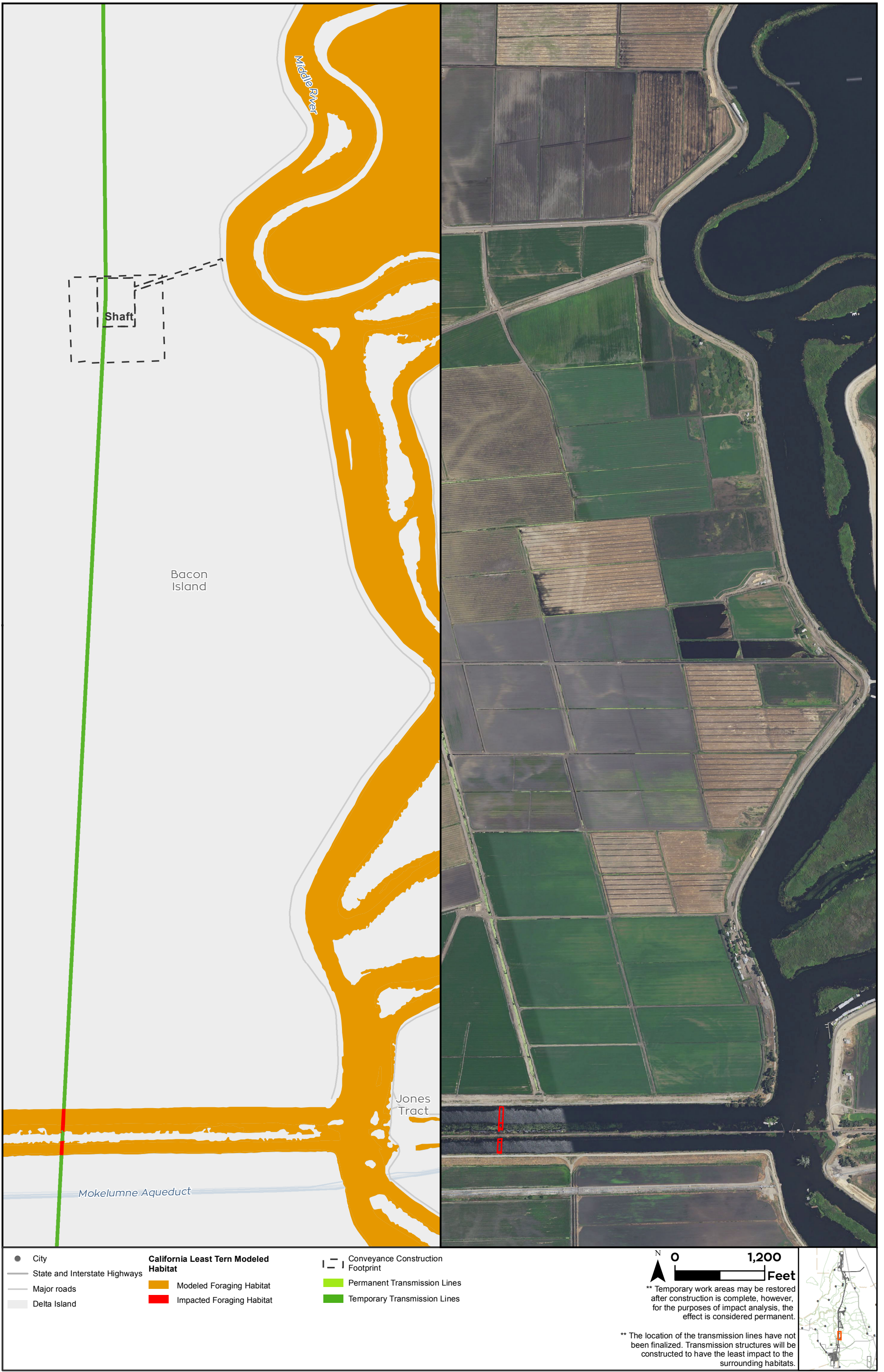


Sources: CCO Conveyance, CA WaterFix 2015; Species Occurrences, ICF 2013; Modeled Habitat, ICF 2013, ICF 2015; NAIP 2014



**Impacts to California Least Tern Modeled Habitat from Water Conveyance Facility Construction
Modified Pipeline Tunnel/Clifton Court Forebay Option
Tunnel Conveyance Facilities
Figure 6.4- 5 of 6.4-14**

T:\WG\38\GIS_33_00\GISRequest_11\F\Deliverable_10\F\EN\126_15\EN\126_15_SpeciesDistribution_2pane_201509.mxd 20151029 [clsb] [Doc No: GIS-00204]



Sources: CCO Conveyance, CA WaterFix 2015; Species Occurrences, ICF 2013; Modeled Habitat, ICF 2013, ICF 2015; NAIP 2014



Impacts to California Least Tern Modeled Habitat from Water Conveyance Facility Construction
Modified Pipeline Tunnel/Clifton Court Forebay Option
Tunnel Conveyance Facilities
Figure 6.4-6 of 6.4-14

T:\WGI-38\GIS_33_00\GISRequest_11\F\Deliverable_11\F\EN\126_15\EN\126_15_SpeciesDistribution_2pane_20151029.mxd 20151029 [clsb] [Doc No: GIS-00204]



- City
 - State and Interstate Highways
 - Major roads
 - Delta Island
- California Least Tern Modeled Habitat**
- Modeled Foraging Habitat
 - Impacted Foraging Habitat
- Conveyance Construction Footprint
 - Permanent Transmission Lines
 - Temporary Transmission Lines

N 0 1,100 Feet

** Temporary work areas may be restored after construction is complete, however, for the purposes of impact analysis, the effect is considered permanent.

** The location of the transmission lines have not been finalized. Transmission structures will be constructed to have the least impact to the surrounding habitats.



Sources: CCO Conveyance, CA WaterFix 2015; Species Occurrences, ICF 2013; Modeled Habitat, ICF 2013, ICF 2015; NAIP 2014



**Impacts to California Least Tern Modeled Habitat from Water Conveyance Facility Construction
Modified Pipeline Tunnel/Clifton Court Forebay Option
Tunnel Conveyance Facilities
Figure 6.4-7 of 6.4-14**

T:\W\GIS\38\GIS_33_00\GISRequest_11\F\Deliverable_10\EN\126_15\EN\126_15_SpeciesDistribution_2pane_201509.mxd 20151029 [clsb] [Doc No: GIS-00204]



- City
 - State and Interstate Highways
 - Major roads
 - Delta Island
- California Least Tern Modeled Habitat**
- Modeled Foraging Habitat
 - Impacted Foraging Habitat
- Conveyance Construction Footprint
- Permanent Transmission Lines
 - Temporary Transmission Lines



** Temporary work areas may be restored after construction is complete, however, for the purposes of impact analysis, the effect is considered permanent.

** The location of the transmission lines have not been finalized. Transmission structures will be constructed to have the least impact to the surrounding habitats.



Sources: CCO Conveyance, CA WaterFix 2015; Species Occurrences, ICF 2013; Modeled Habitat, ICF 2013, ICF 2015; NAIP 2014



**Impacts to California Least Tern Modeled Habitat from Water Conveyance Facility Construction
Modified Pipeline Tunnel/Clifton Court Forebay Option
Tunnel Conveyance Facilities
Figure 6.4-8 of 6.4-14**



T:\WGI-38\GIS_33_00\GISRequest_11\F\Deliverable_10\EN\126_15\EN\126_15_SpeciesDistribution_2pane_201509.mxd 20151029 [clsib] [Doc No: GIS-00204]

Sources: CCO Conveyance, CA WaterFix 2015; Species Occurrences, ICF 2013; Modeled Habitat, ICF 2013, ICF 2015; NAIP 2014



**Impacts to California Least Tern Modeled Habitat from Water Conveyance Facility Construction
Modified Pipeline Tunnel/Clifton Court Forebay Option
Clifton Court Forebay
Figure 6.4-9 of 6.4-14**

T:\WGI-38\GIS_33_00\GISRequest_11\F\Deliverable_10\EN\126_15\SpeciesDistribution_2pane_20151029.mxd 20151029 [cls] [Doc No: GIS-00204]

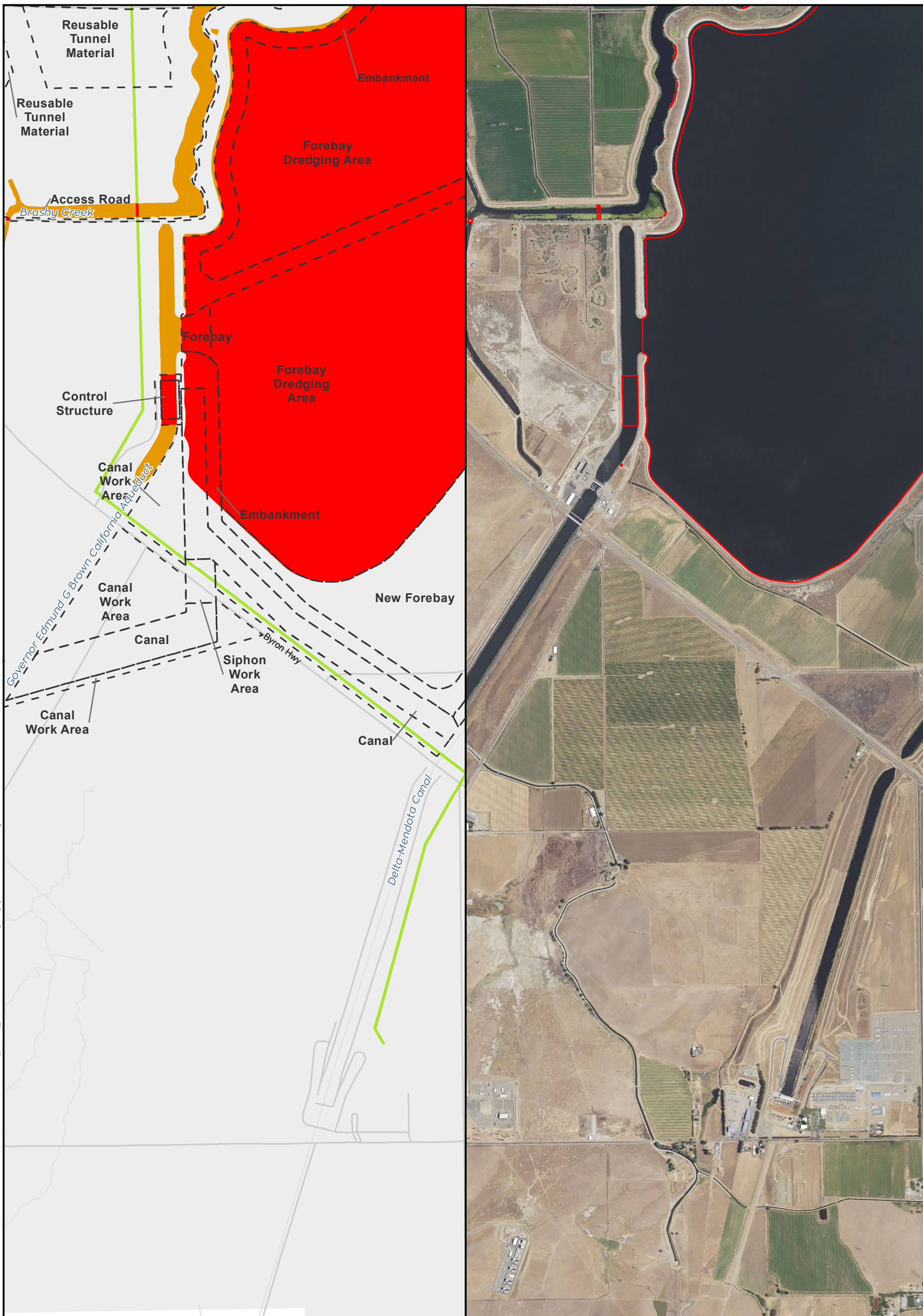


Sources: CCO Conveyance, CA WaterFix 2015; Species Occurrences, ICF 2013; Modeled Habitat, ICF 2013, ICF 2015; NAIP 2014



**Impacts to California Least Tern Modeled Habitat from Water Conveyance Facility Construction
Modified Pipeline Tunnel/Clifton Court Forebay Option
New Forebay
Figure 6.4-10 of 6.4-14**

T:\WGI-38\GIS_33_00\GISRequest_11\F\Deliverable_10\EN\126_15\EN\126_15_SpeciesDistribution_2pane_201509.mxd_20151029 [cls] [Doc No: GIS-00204]



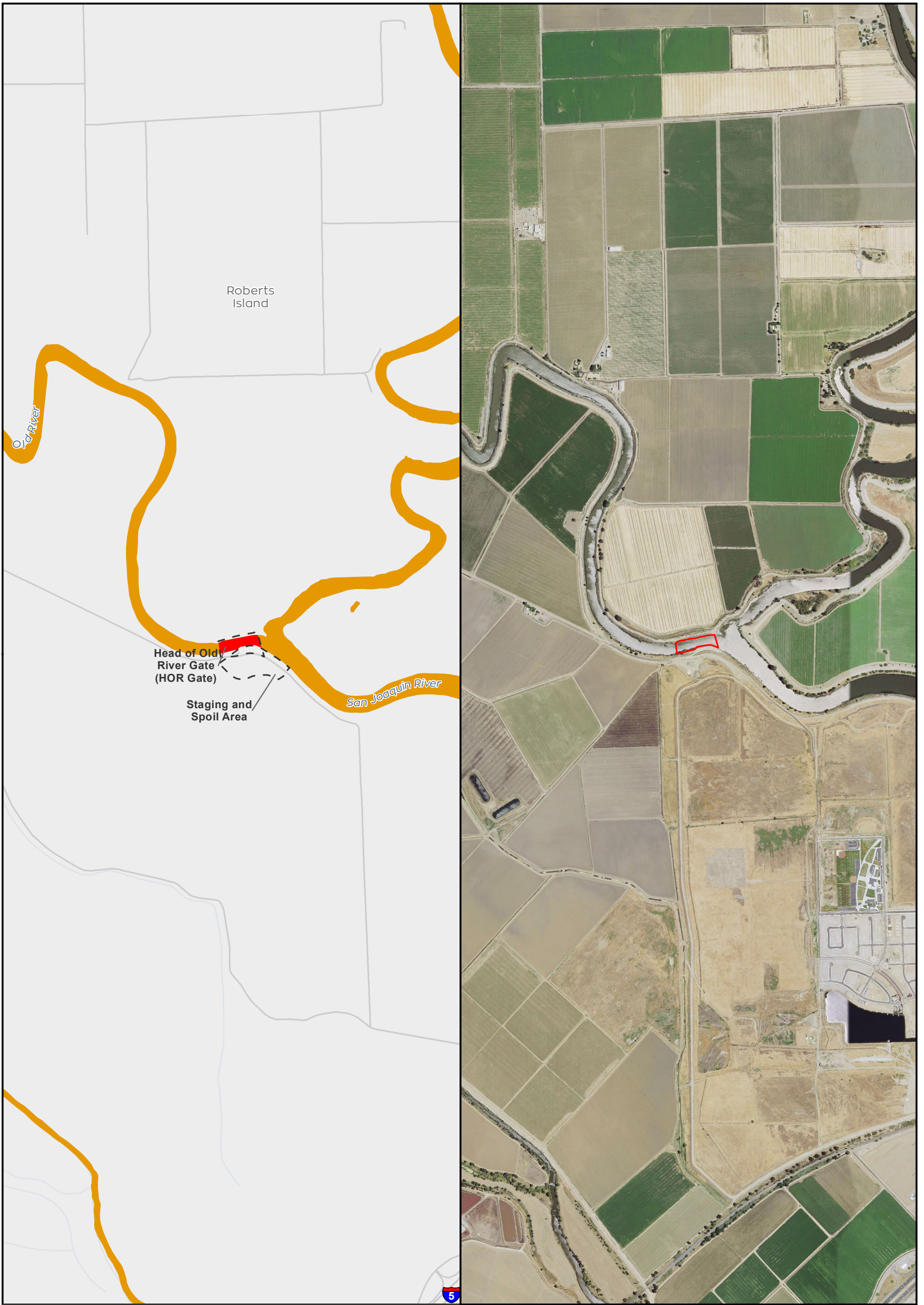
<ul style="list-style-type: none"> ● City — State and Interstate Highways — Major roads — Delta Island 	<p>California Least Tern Modeled Habitat</p> <ul style="list-style-type: none"> ■ Modeled Foraging Habitat ■ Impacted Foraging Habitat 	<ul style="list-style-type: none"> — Conveyance Construction Footprint — Permanent Transmission Lines — Temporary Transmission Lines 	<p>N 0 1,600 Feet</p> <p>** Temporary work areas may be restored after construction is complete, however, for the purposes of impact analysis, the effect is considered permanent.</p> <p>** The location of the transmission lines have not been finalized. Transmission structures will be constructed to have the least impact to the surrounding habitats.</p>	
--	---	---	--	--

Sources: CCO Conveyance, CA WaterFix 2015; Species Occurrences, ICF 2013; Modeled Habitat, ICF 2013, ICF 2015; NAIP 2014



**Impacts to California Least Tern Modeled Habitat from Water Conveyance Facility Construction
Modified Pipeline Tunnel/Clifton Court Forebay Option
Clifton Court Forebay
Figure 6.4-11 of 6.4-14**

T:\WGI-38\GIS_33_00\GISRequest_11\F\Deliverable_10\EN\126_15\EN\126_15_SpeciesDistribution_2pane_201512.mxd 20151222 [clsb] [Doc No: GIS-00204]



- City
- State and Interstate Highways
- Major roads
- Delta Island

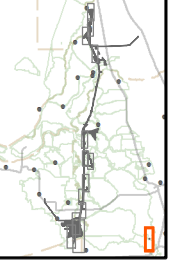
- California Least Tern Modeled Habitat**
- Modeled Foraging Habitat
 - Impacted Foraging Habitat

- Conveyance Construction Footprint
- Permanent Transmission Lines
- Temporary Transmission Lines

N 0 1,600 Feet

** Temporary work areas may be restored after construction is complete, however, for the purposes of impact analysis, the effect is considered permanent.

** The location of the transmission lines have not been finalized. Transmission structures will be constructed to have the least impact to the surrounding habitats.

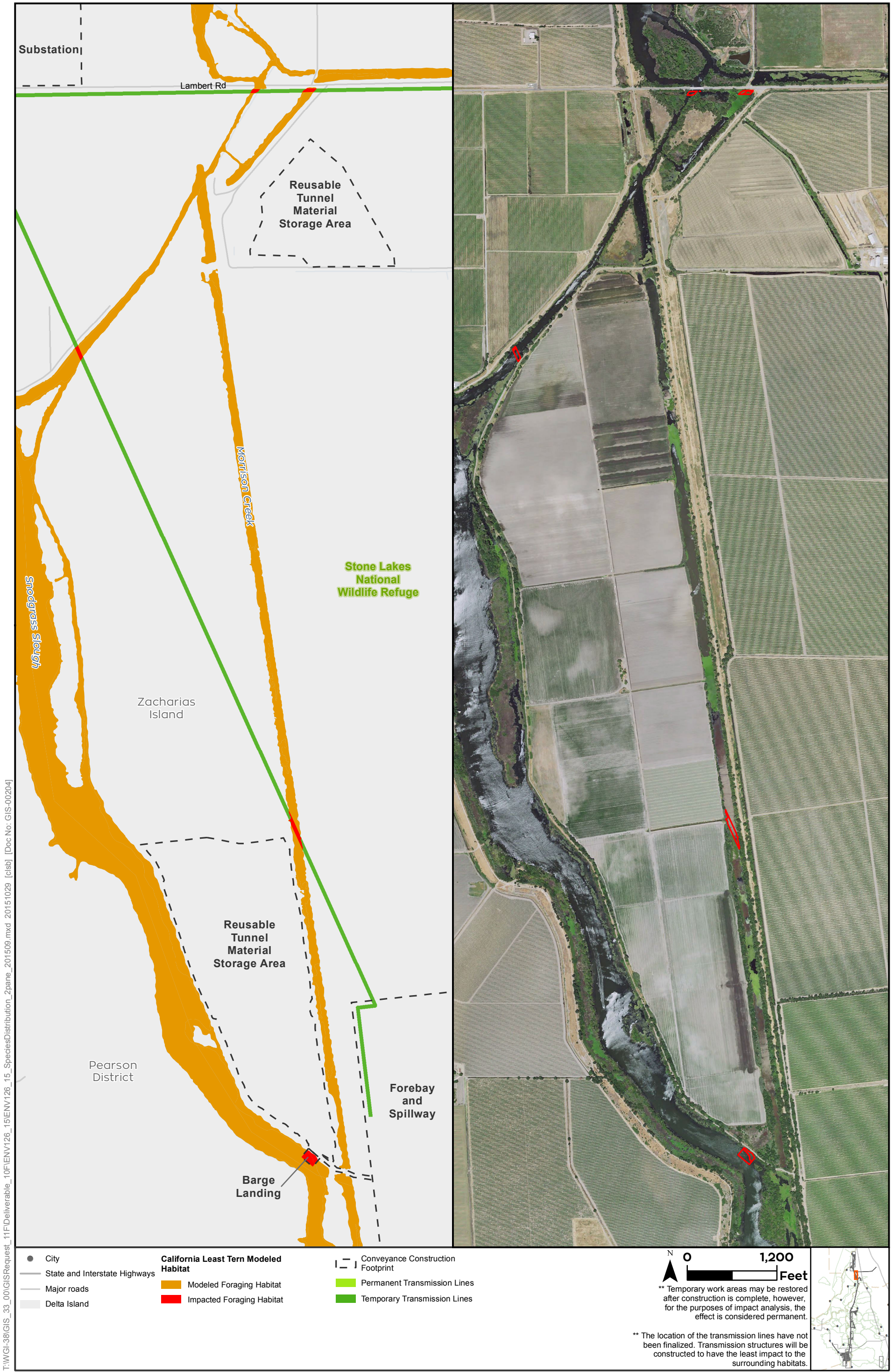


Sources: CCO Conveyance, CA WaterFix 2015; Species Occurrences, ICF 2013; Modeled Habitat, ICF 2013, ICF 2015; NAIP 2014



**Impacts to California Least Tern Modeled Habitat from Water Conveyance Facility Construction
Modified Pipeline Tunnel/Clifton Court Forebay Option
HOR Gate**

Figure 6.4-12 of 6.4-14



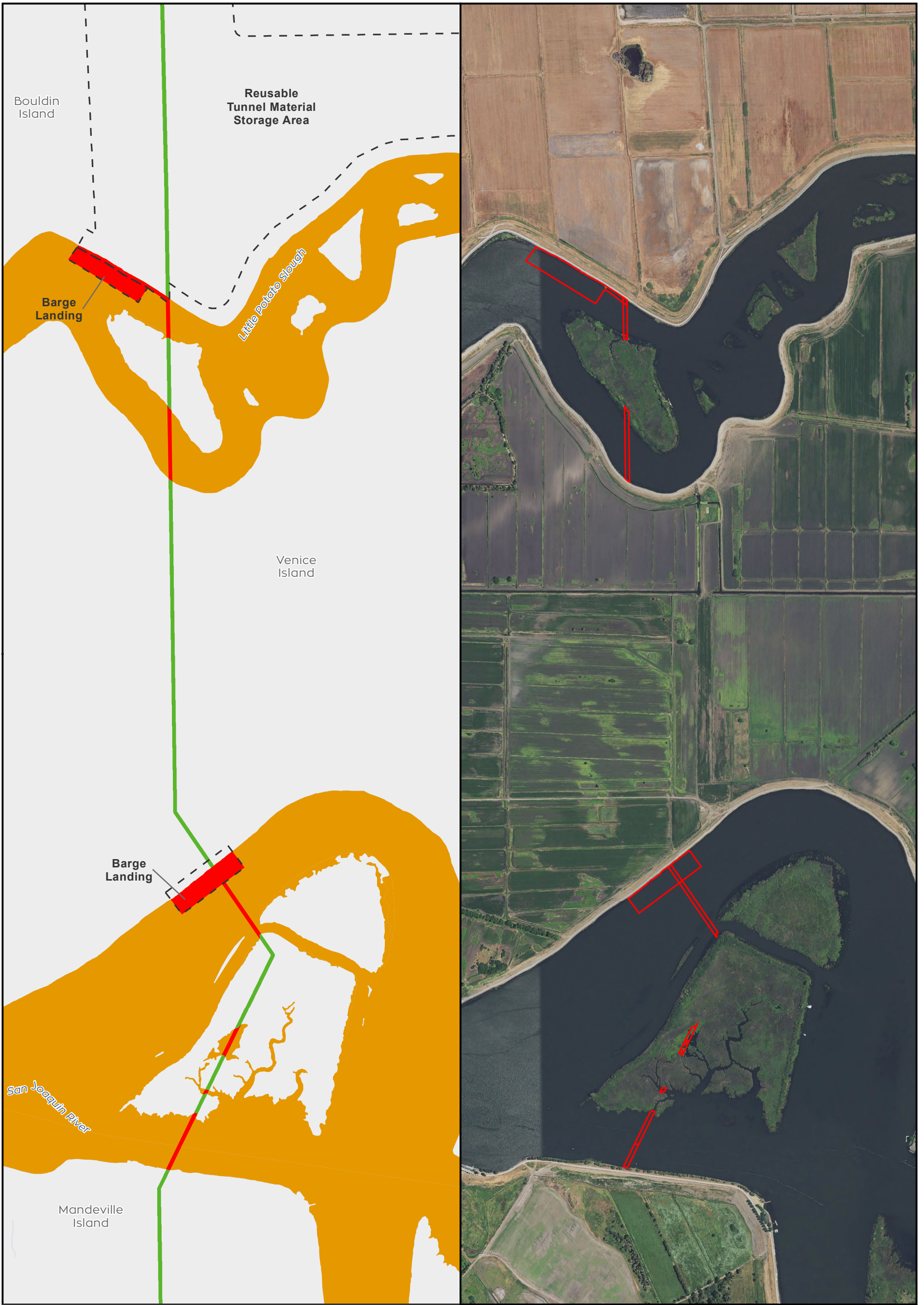
T:\WGI-38\GIS_33_00\GISRequest_11\F\Deliverable_11\F\ENV\126_15\EN\126_15_SpeciesDistribution_2pane_20151029 [cls] [Doc No: GIS-00204]

Sources: CCO Conveyance, CA WaterFix 2015; Species Occurrences, ICF 2013; Modeled Habitat, ICF 2013, ICF 2015; NAIP 2014



Impacts to California Least Tern Modeled Habitat from Water Conveyance Facility Construction
Modified Pipeline Tunnel/Clifton Court Forebay Option
Reusable Tunnel Material
Figure 6.4-13 of 6.4-14

T:\WGI-38\GIS_33_00\GISRequest_11\F\Deliverable_10\EN\126_15\EN\126_15_SpeciesDistribution_2pane_201509.mxd 20151029 [clsb] [Doc No: GIS-00204]



- City
 - State and Interstate Highways
 - Major roads
 - Delta Island
- California Least Tern Modeled Habitat**
- Orange: Modeled Foraging Habitat
 - Red: Impacted Foraging Habitat
- Conveyance Construction Footprint
 - Green: Permanent Transmission Lines
 - Light Green: Temporary Transmission Lines

N 0 1,200 Feet

** Temporary work areas may be restored after construction is complete, however, for the purposes of impact analysis, the effect is considered permanent.

** The location of the transmission lines have not been finalized. Transmission structures will be constructed to have the least impact to the surrounding habitats.



Sources: CCO Conveyance, CA WaterFix 2015; Species Occurrences, ICF 2013; Modeled Habitat, ICF 2013, ICF 2015; NAIP 2014



Impacts to California Least Tern Modeled Habitat from Water Conveyance Facility Construction
Modified Pipeline Tunnel/Clifton Court Forebay Option
Reusable Tunnel Material
Figure 6.4-14 of 6.4-14