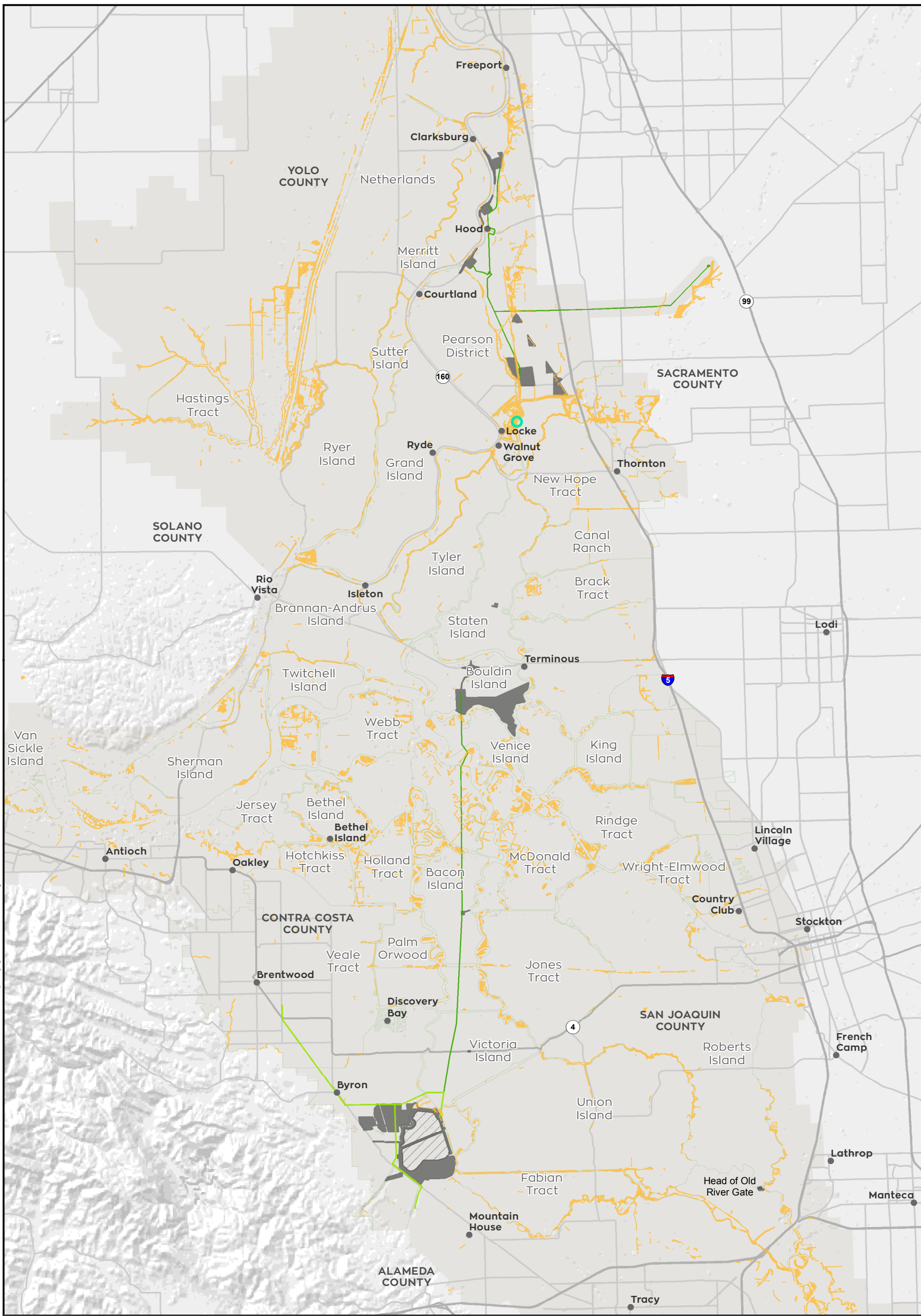


T:\WGI-38\GIS_33_00\GISRequest_11\F\Deliverable_10\EN\EN126_15\EN\EN126_15_SpeciesDistribution.mxd 20151222 [cls] [Doc No: GIS-00204]



● City	Western Yellow-Billed Cuckoo	■ Construction Surface Impact
□ Delta Islands	■ Modeled Migratory Habitat	■ Permanent Transmission Lines
Action Area	■ Species Occurrence	■ Temporary Transmission Lines
□ Legal Delta and Transmission Line Corridor		

N
 0 20,000 Feet

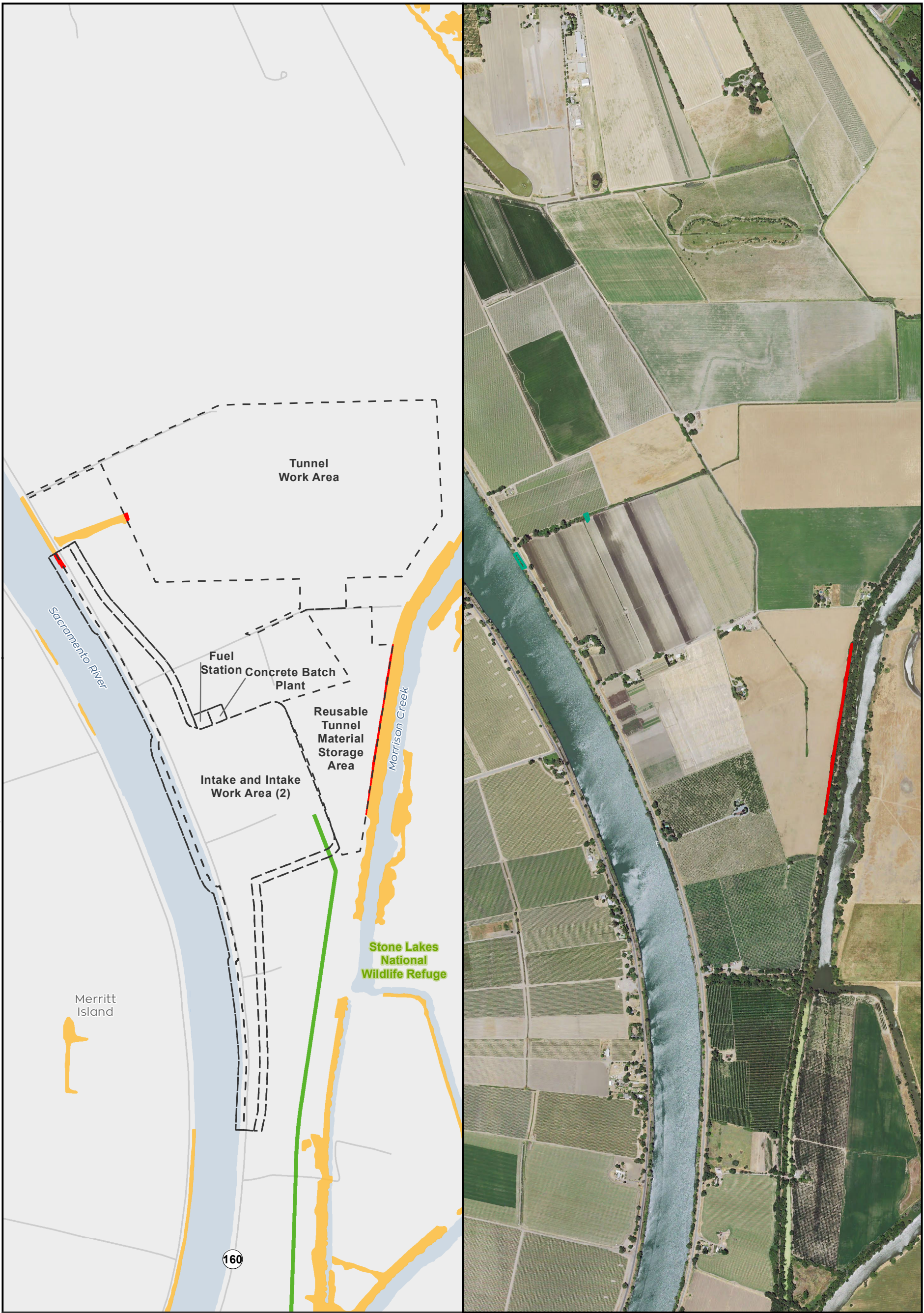
** Temporary work areas may be restored after construction is complete, however, for the purposes of impact analysis, the effect is considered permanent

Sources: CCO Conveyance, CA WaterFix 2015; Species Occurrences, ICF 2013; Modeled Habitat, ICF 2013, ICF 2015; Critical Habitat, USFWS 2012



**Impacts to Western Yellow-Billed Cuckoo Modeled Habitat from Water Conveyance Facility Construction
Modified Pipeline Tunnel/Clifton Court Forebay Option
Figure 6.6-1 of 6.6-10**

T:\WG\38\GIS_33_00\GISRequest_11\F\Deliverable_10\EN\126_15\EN\126_15_SpeciesDistribution_2pane_201512.mxd 20151222 [cls] [Doc No: GIS-00204]



- City
- State and Interstate Highways
- Major roads
- Delta Island
- Western Yellow-Billed Cuckoo (Eng Clip)**
- Impacted Modeled Migration Habitat
- Modeled Migratory Habitat
- Conveyance Construction Footprint
- Permanent Transmission Lines
- Temporary Transmission Lines



** Temporary work areas may be restored after construction is complete, however, for the purposes of impact analysis, the effect is considered permanent.

** The location of the transmission lines have not been finalized. Transmission structures will be constructed to have the least impact to the surrounding habitats.



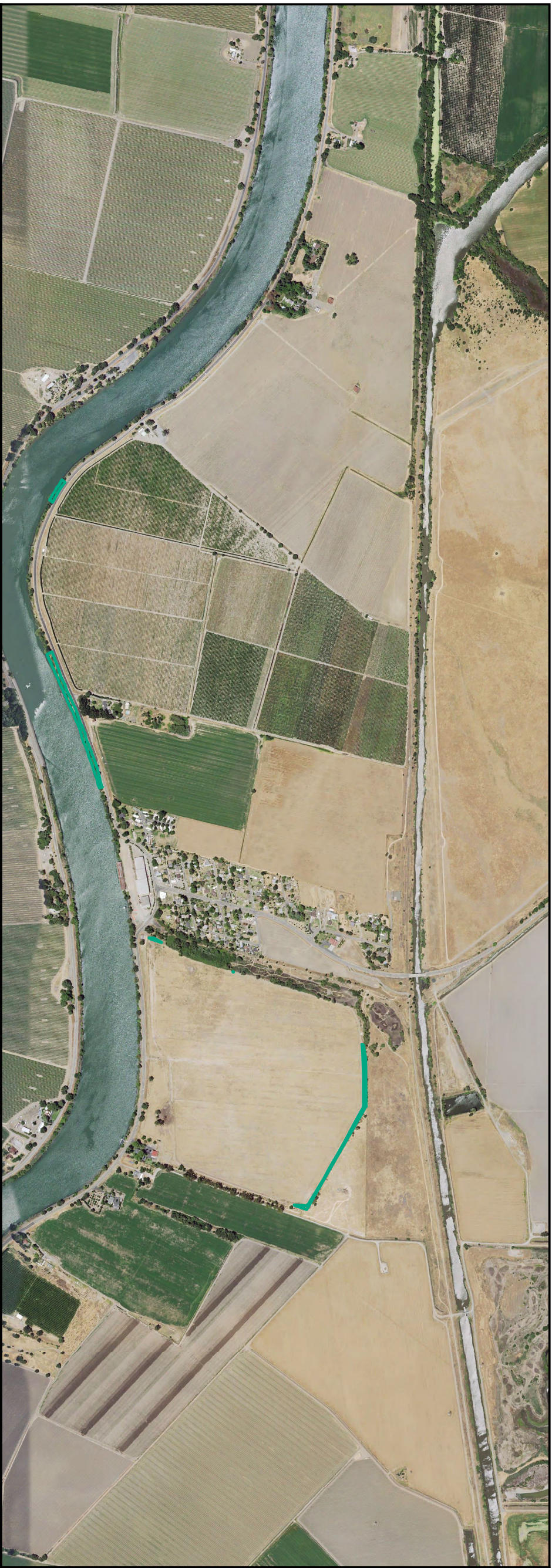
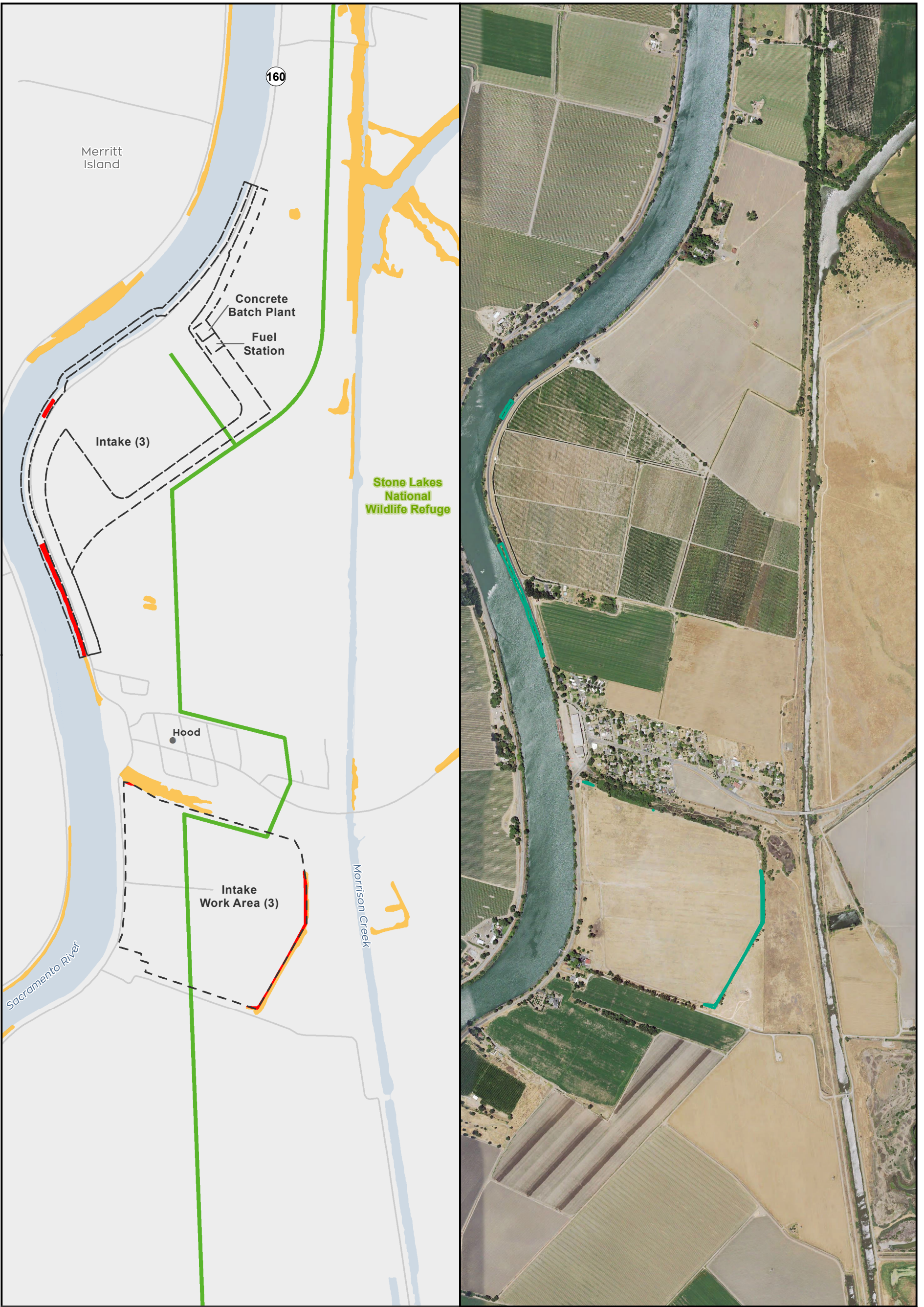
Sources: CCO Conveyance, CA WaterFix 2015; Species Occurrences, ICF 2013; Modeled Habitat, ICF 2013, ICF 2015; NAIP 2014



Impacts to Western Yellow-Billed Cuckoo Modeled Habitat from Water Conveyance Facility Construction Modified Pipeline Tunnel/Clifton Court Forebay Option Intake 2

Figure 6.6-2 of 6.6-10

T:\WGI-38\GIS_33_00\GISRequest_11\F\Deliverable_11\F\EN\126_15\EN\126_15_SpeciesDistribution_2pane_201512.mxd 20151222 [cls] [Doc No: GIS-00204]



- City
 - State and Interstate Highways
 - Major roads
 - Delta Island
- Western Yellow-Billed Cuckoo (Eng Clip)**
- Impacted Modeled Migration Habitat
 - Modeled Migratory Habitat
- Conveyance Construction Footprint
 - Permanent Transmission Lines
 - Temporary Transmission Lines



** Temporary work areas may be restored after construction is complete, however, for the purposes of impact analysis, the effect is considered permanent.

** The location of the transmission lines have not been finalized. Transmission structures will be constructed to have the least impact to the surrounding habitats.



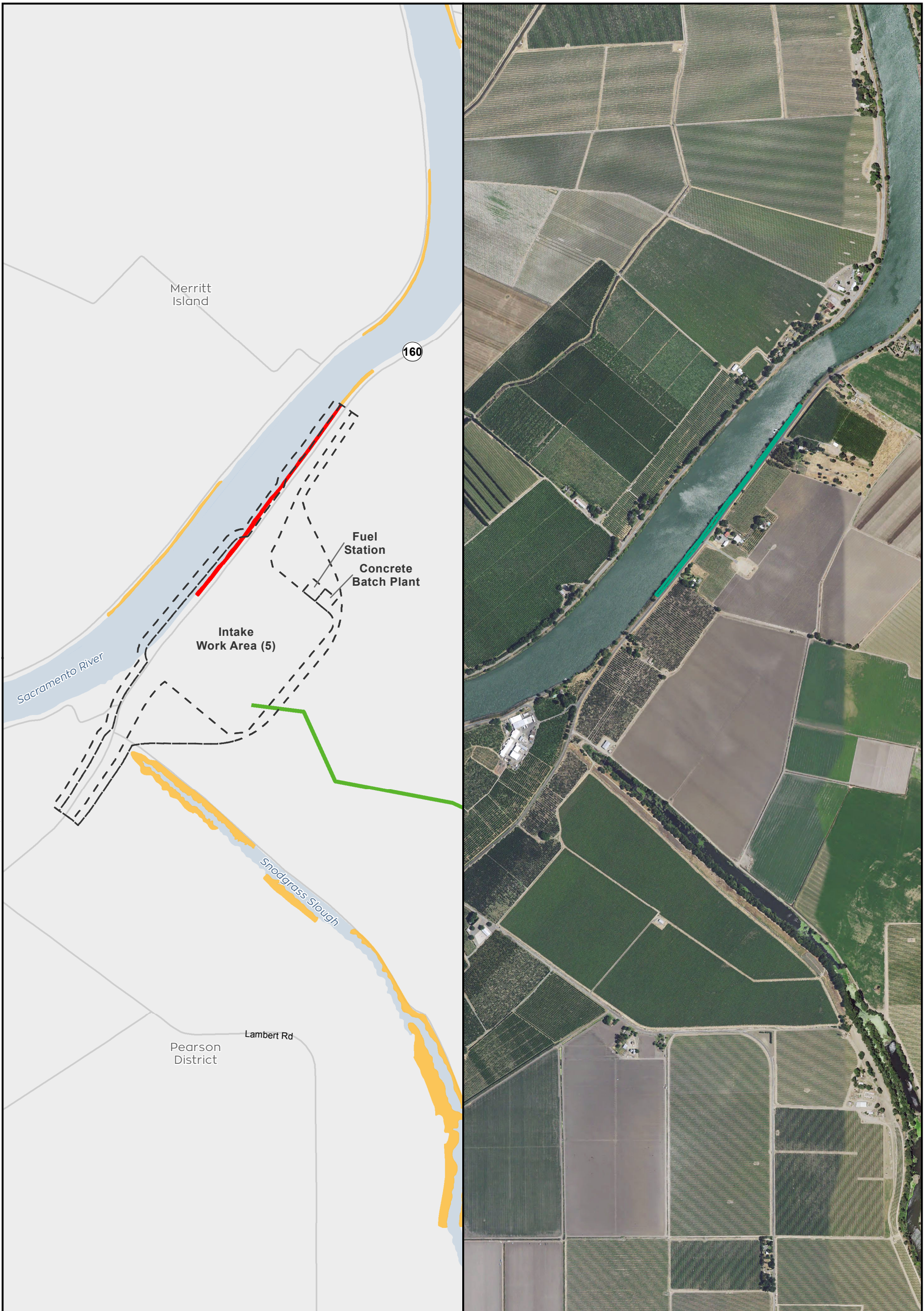
Sources: CCO Conveyance, CA WaterFix 2015; Species Occurrences, ICF 2013; Modeled Habitat, ICF 2013, ICF 2015; NAIP 2014



**Impacts to Western Yellow-Billed Cuckoo Modeled Habitat from Water Conveyance Facility Construction
Modified Pipeline Tunnel/Clifton Court Forebay Option
Intake 3**

Figure 6.6-3 of 6.6-10

T:\W\GIS\38\GIS_33_00\GISRequest_11\F\Deliverable_10\F\ENV\126_15\ENV\126_15_SpeciesDistribution_2pane_201512.mxd 20151222 [clsb] [Doc No: GIS-00204]



<ul style="list-style-type: none"> ● City — State and Interstate Highways — Major roads — Delta Island 	<p>Western Yellow-Billed Cuckoo (Eng Clip)</p> <ul style="list-style-type: none"> ■ Impacted Modeled Migration Habitat ■ Modeled Migratory Habitat 	<ul style="list-style-type: none"> - - - Conveyance Construction Footprint — Permanent Transmission Lines — Temporary Transmission Lines 	<p>0 1,200 Feet</p> <p>** Temporary work areas may be restored after construction is complete, however, for the purposes of impact analysis, the effect is considered permanent.</p> <p>** The location of the transmission lines have not been finalized. Transmission structures will be constructed to have the least impact to the surrounding habitats.</p>
--	---	---	--

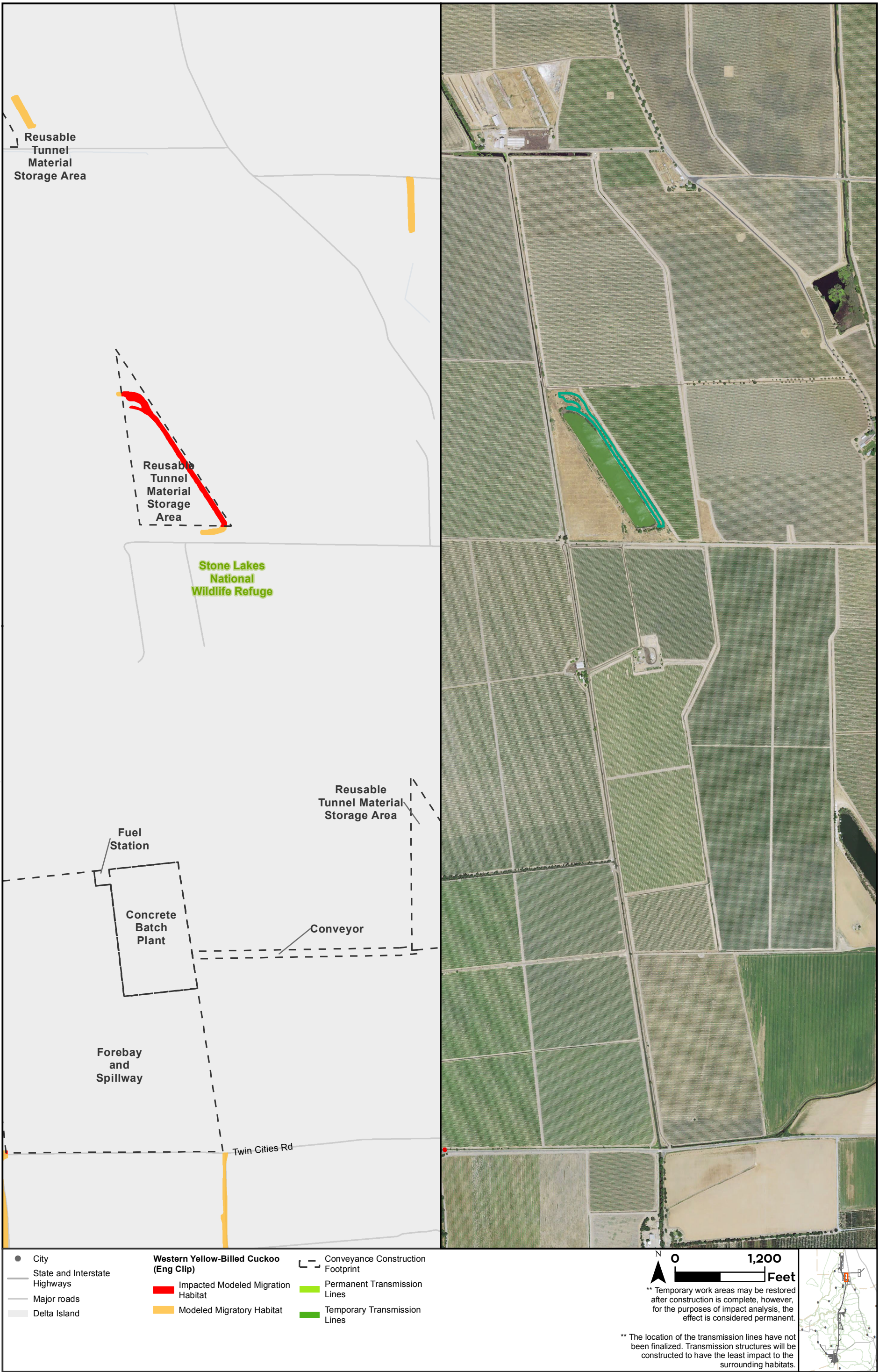
Sources: CCO Conveyance, CA WaterFix 2015; Species Occurrences, ICF 2013; Modeled Habitat, ICF 2013, ICF 2015; NAIP 2014



**Impacts to Western Yellow-Billed Cuckoo Modeled Habitat from Water Conveyance Facility Construction
Modified Pipeline Tunnel/Clifton Court Forebay Option
Intake 5**

Figure 6.6-4 of 6.6-10

T:\WGI-38\GIS_33_00\GISRequest_11\F\Deliverable_10\EN\126_15\EN\126_15_SpeciesDistribution_2pane_20151222 [clsib] [Doc No: GIS-00204]



- City
- State and Interstate Highways
- Major roads
- Delta Island

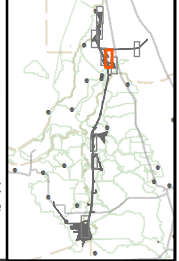
- Western Yellow-Billed Cuckoo (Eng Clip)**
- Impacted Modeled Migration Habitat
 - Modeled Migratory Habitat

- Conveyance Construction Footprint
- Permanent Transmission Lines
- Temporary Transmission Lines

0 1,200 Feet

** Temporary work areas may be restored after construction is complete, however, for the purposes of impact analysis, the effect is considered permanent.

** The location of the transmission lines have not been finalized. Transmission structures will be constructed to have the least impact to the surrounding habitats.

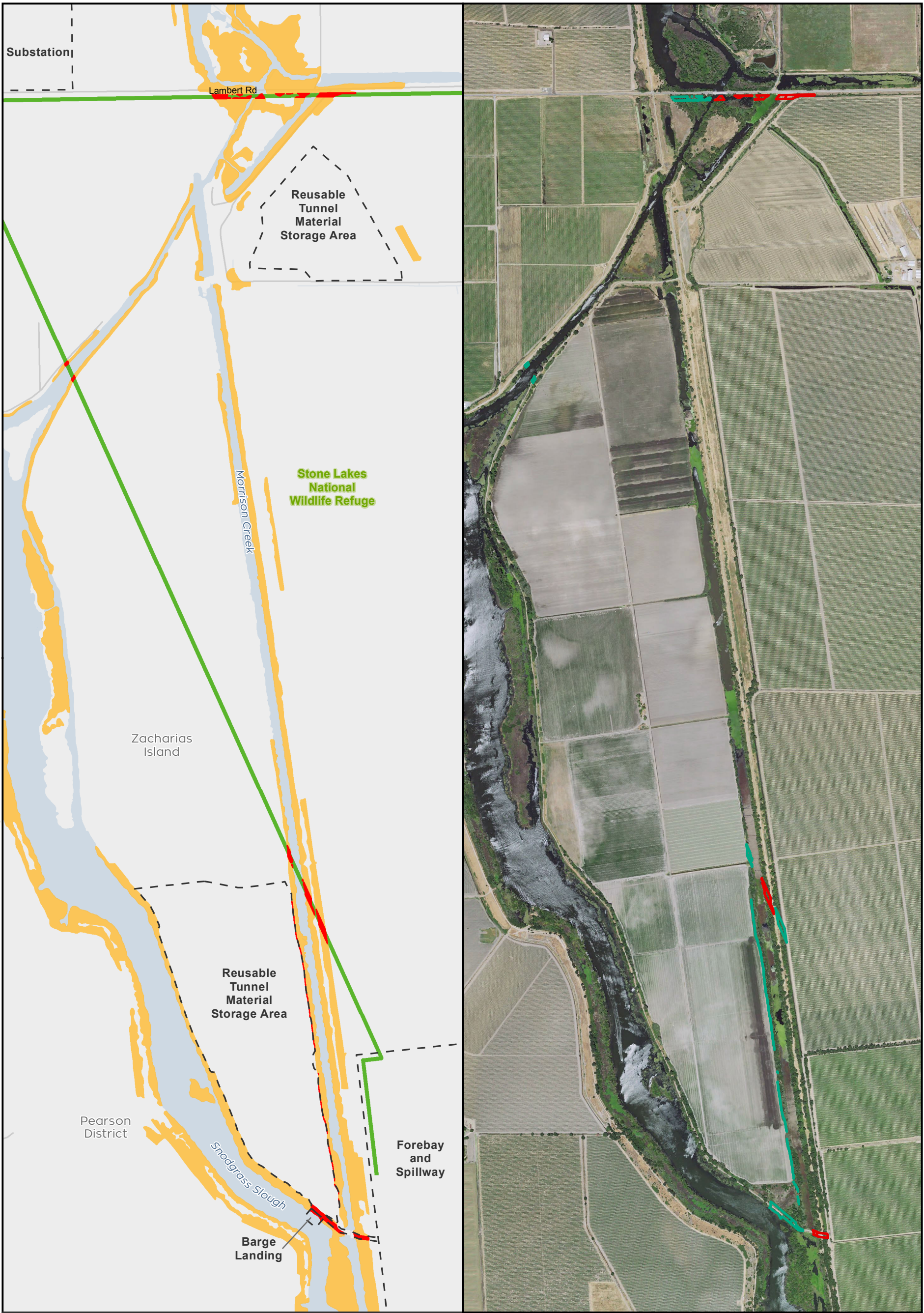


Sources: CCO Conveyance, CA WaterFix 2015; Species Occurrences, ICF 2013; Modeled Habitat, ICF 2013, ICF 2015; NAIP 2014



Impacts to Western Yellow-Billed Cuckoo Modeled Habitat from Water Conveyance Facility Construction Modified Pipeline Tunnel/Clifton Court Forebay Option Reusable Tunnel Material at Intermediate Forebay Figure 6.6-5 of 6.6-10

T:\WGI-38\GIS_33_00\GISRequest_11\F\Deliverable_10\F\ENV\126_15\ENV\126_15_SpeciesDistribution_2pane_201512.mxd 20151222 [clsb] [Doc No: GIS-00204]



- City
- State and Interstate Highways
- Major roads
- Delta Island

- Western Yellow-Billed Cuckoo (Eng Clip)**
- Impacted Modeled Migration Habitat
 - Modeled Migratory Habitat

- Conveyance Construction Footprint
- Permanent Transmission Lines
- Temporary Transmission Lines

0 1,200 Feet

** Temporary work areas may be restored after construction is complete, however, for the purposes of impact analysis, the effect is considered permanent.

** The location of the transmission lines have not been finalized. Transmission structures will be constructed to have the least impact to the surrounding habitats.

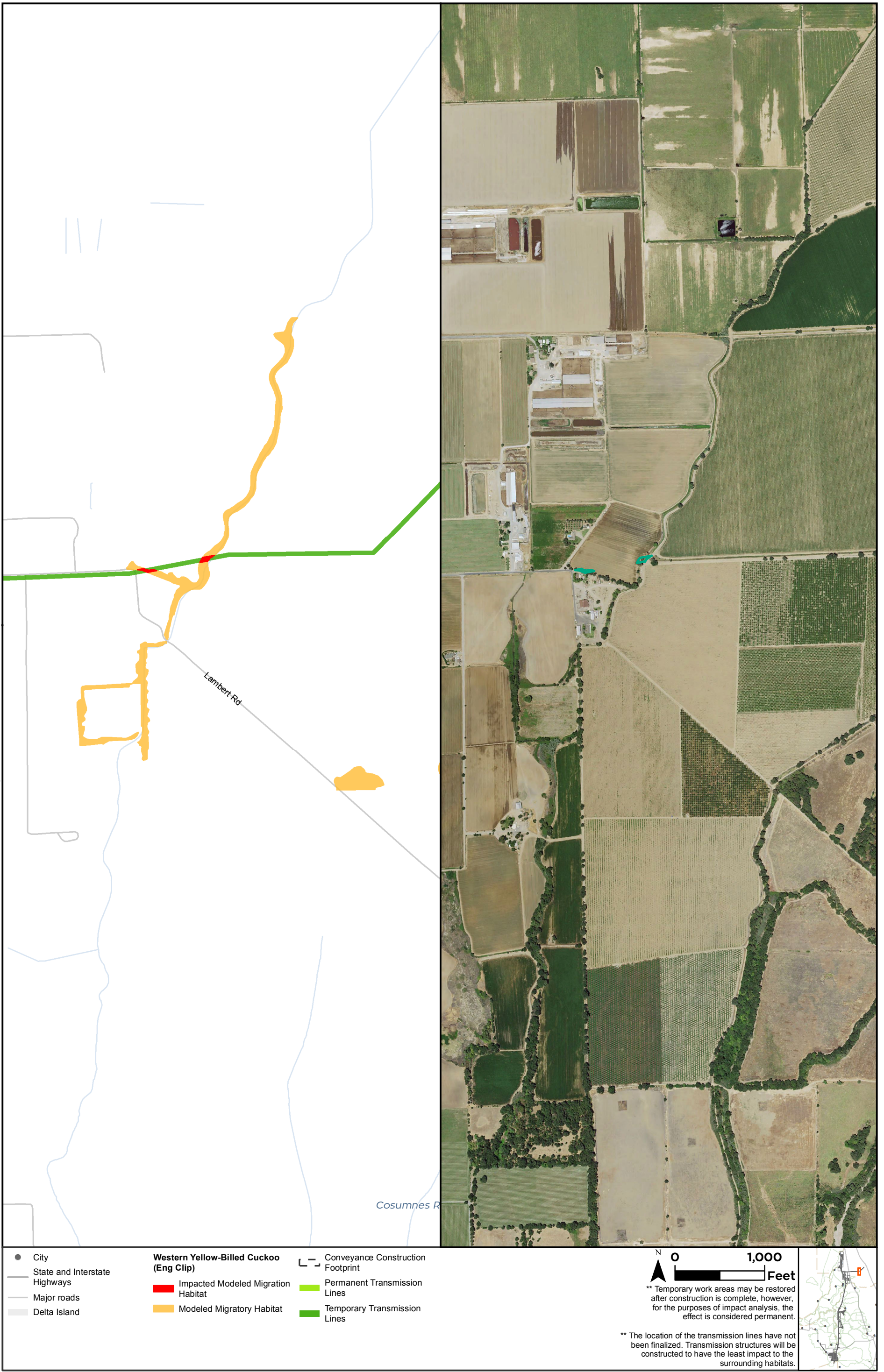


Sources: CCO Conveyance, CA WaterFix 2015; Species Occurrences, ICF 2013; Modeled Habitat, ICF 2013, ICF 2015; NAIP 2014



Impacts to Western Yellow-Billed Cuckoo Modeled Habitat from Water Conveyance Facility Construction Modified Pipeline Tunnel/Clifton Court Forebay Option Transmission Line - Intermediate Forebay Figure 6.6-6 of 6.6-10

T:\WGI-38\GIS_33_00\GISRequest_11\F\Deliverable_10\EN\126_15\EN\126_15_SpeciesDistribution_2pane_201512.mxd 20151222 [clsb] [Doc No: GIS-00204]

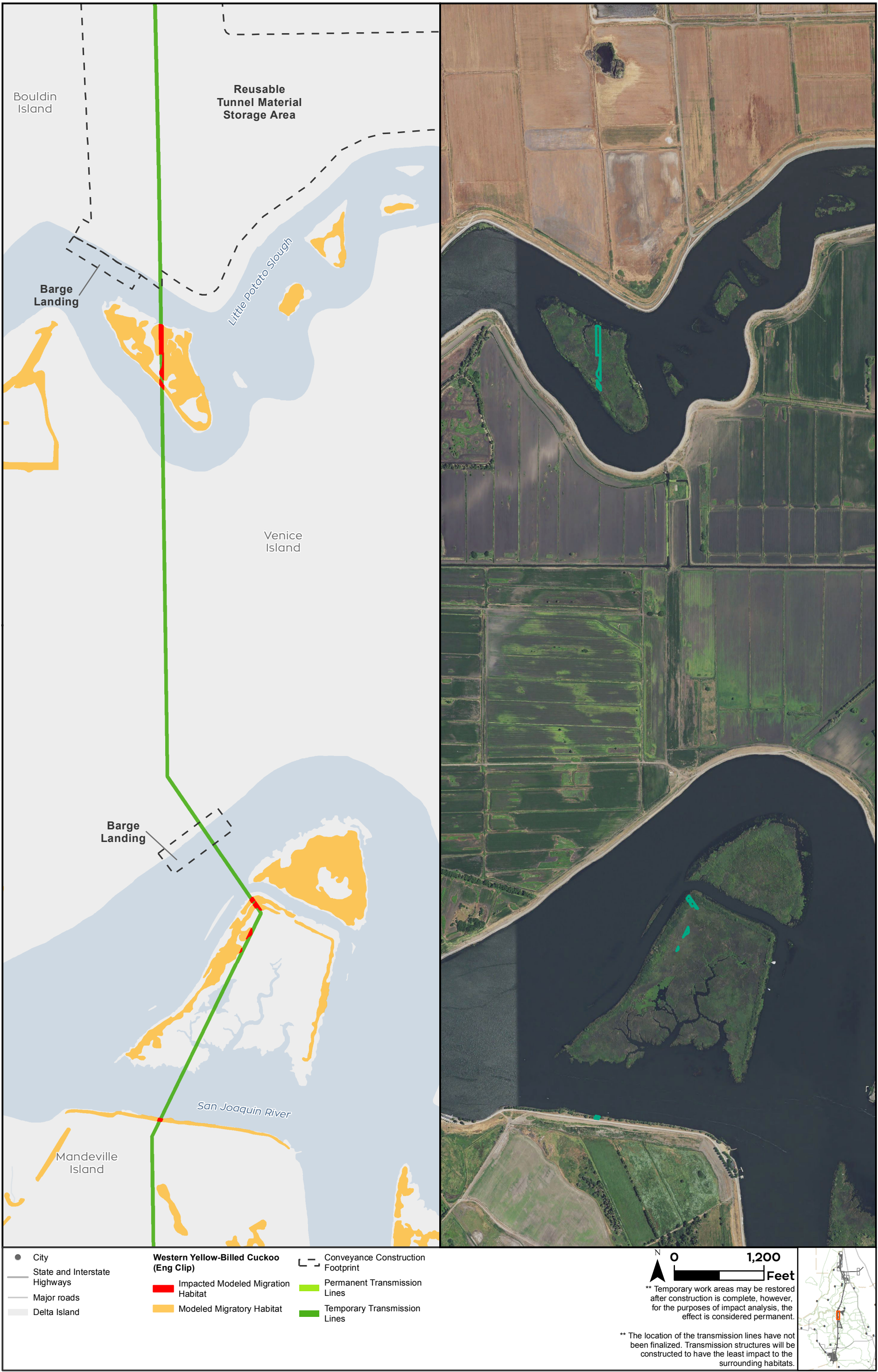


Sources: CCO Conveyance, CA WaterFix 2015; Species Occurrences, ICF 2013; Modeled Habitat, ICF 2013, ICF 2015; NAIP 2014



Impacts to Western Yellow-Billed Cuckoo Modeled Habitat from Water Conveyance Facility Construction Modified Pipeline Tunnel/Clifton Court Forebay Option Transmission Line - East leg
Figure 6.6-7 of 6.6-10

T:\WGI-38\GIS_33_00\GISRequest_11\F\Deliverable_10\F\EN\126_15\EN\126_15_SpeciesDistribution_2pane_201512.mxd 20151222 [clsb] [Doc No: GIS-00204]



Sources: CCO Conveyance, CA WaterFix 2015; Species Occurrences, ICF 2013; Modeled Habitat, ICF 2013, ICF 2015; NAIP 2014



**Impacts to Western Yellow-Billed Cuckoo Modeled Habitat from Water Conveyance Facility Construction
Modified Pipeline Tunnel/Clifton Court Forebay Option
Transmission Line
Figure 6.6-8 of 6.6-10**

T:\WGI-38\GIS_33_00\GISRequest_11\F\Deliverable_10\F\EN\126_15\EN\126_15_SpeciesDistribution_2pane_201512.mxd 20151222 [clsb] [Doc No: GIS-00204]



- City
 - State and Interstate Highways
 - Major roads
 - Delta Island
- Western Yellow-Billed Cuckoo (Eng Clip)**
- Impacted Modeled Migration Habitat
 - Modeled Migratory Habitat
- Conveyance Construction Footprint
 - Permanent Transmission Lines
 - Temporary Transmission Lines



** Temporary work areas may be restored after construction is complete, however, for the purposes of impact analysis, the effect is considered permanent.

** The location of the transmission lines have not been finalized. Transmission structures will be constructed to have the least impact to the surrounding habitats.

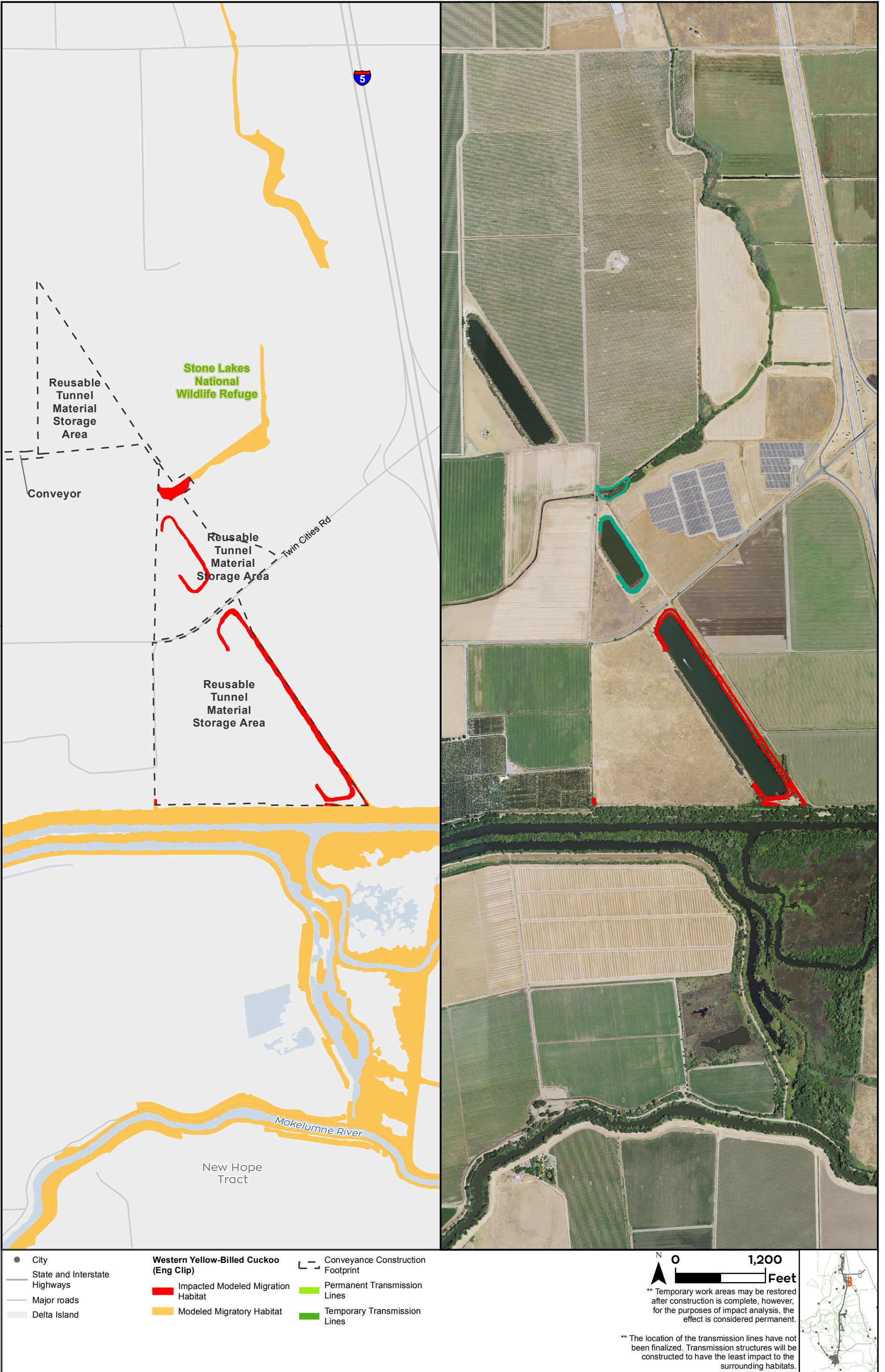


Sources: CCO Conveyance, CA WaterFix 2015; Species Occurrences, ICF 2013; Modeled Habitat, ICF 2013, ICF 2015; NAIP 2014



Impacts to Western Yellow-Billed Cuckoo Modeled Habitat from Water Conveyance Facility Construction Modified Pipeline Tunnel/Clifton Court Forebay Option Tunnel Work Area & Transmission Line
Figure 6.6-9 of 6.6-10

T:\W\GIS\38\GIS_33_00\GISRequest_11\F\Deliverable_11\F\Deliverable_11\F\EN\126_15_15\EN\126_15_SpeciesDistribution_2pane_201512.mxd 20151222 [clsb] [Doc No: GIS-00204]



Sources: CCO Conveyance, CA WaterFix 2015; Species Occurrences, ICF 2013; Modeled Habitat, ICF 2013, ICF 2015; NAIP 2014



Impacts to Western Yellow-Billed Cuckoo Modeled Habitat from Water Conveyance Facility Construction Modified Pipeline Tunnel/Clifton Court Forebay Option Reusable Tunnel Material at Intermediate Forebay Figure 6.6-10 of 6.6-10