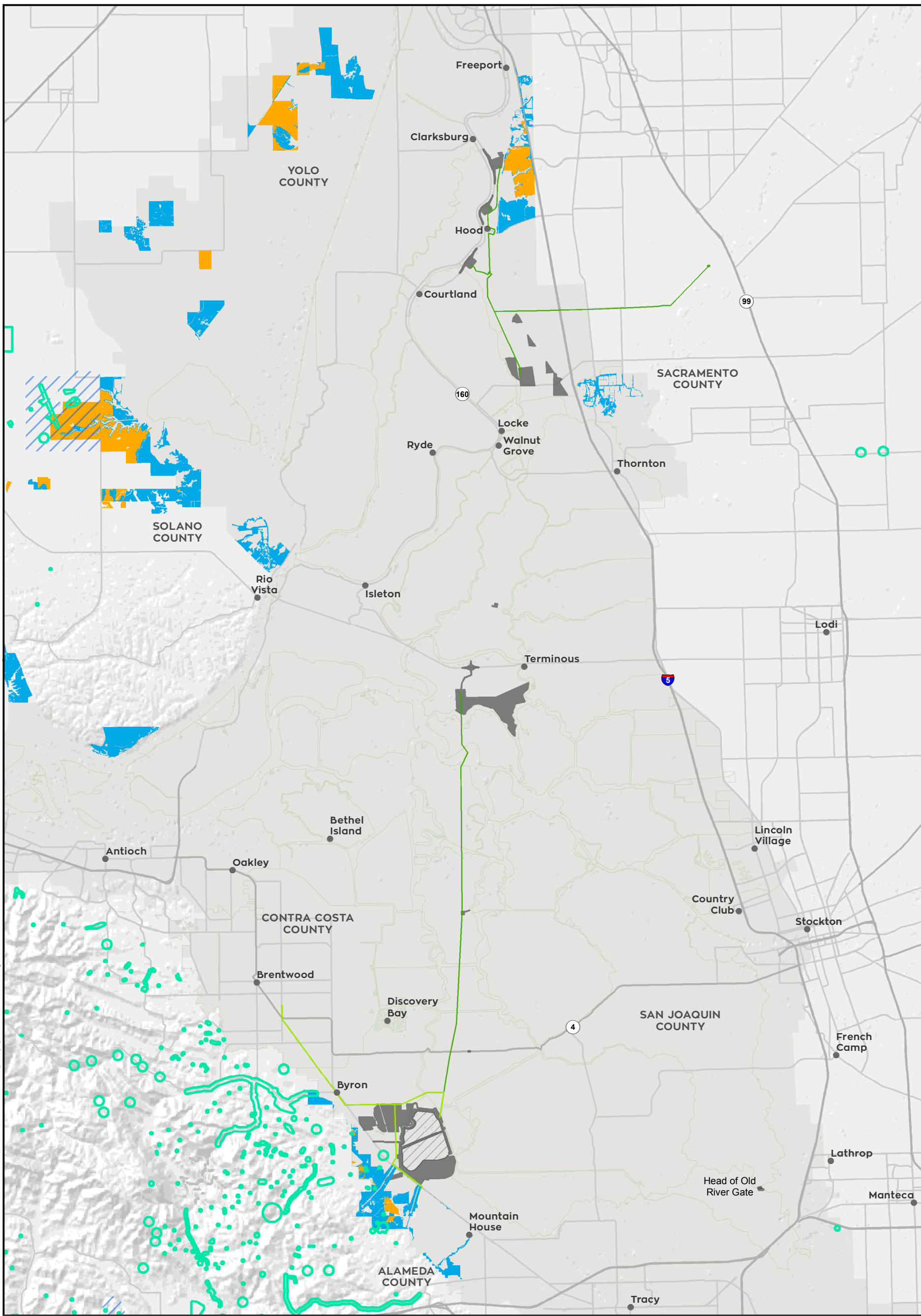
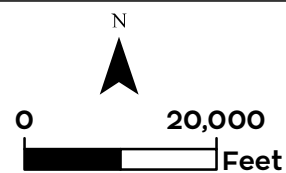


Y:\BiologicalAssess_ESA_Sect7_Permitting\ENV126_15_SpeciesDistribution_2016.mxd 2016225 [aisb] [Doc No: GIS-00204]



- City
- Delta Islands
- Legal Delta Boundary
- California Tiger Salamander
 - ▨ Critical Habitat
 - Modeled Aquatic Breeding Habitat
 - Modeled Terrestrial Cover and Aestivation Habitat
 - Species Occurrence
- Project Area
- Permanent Transmission Lines
- Temporary Transmission Lines

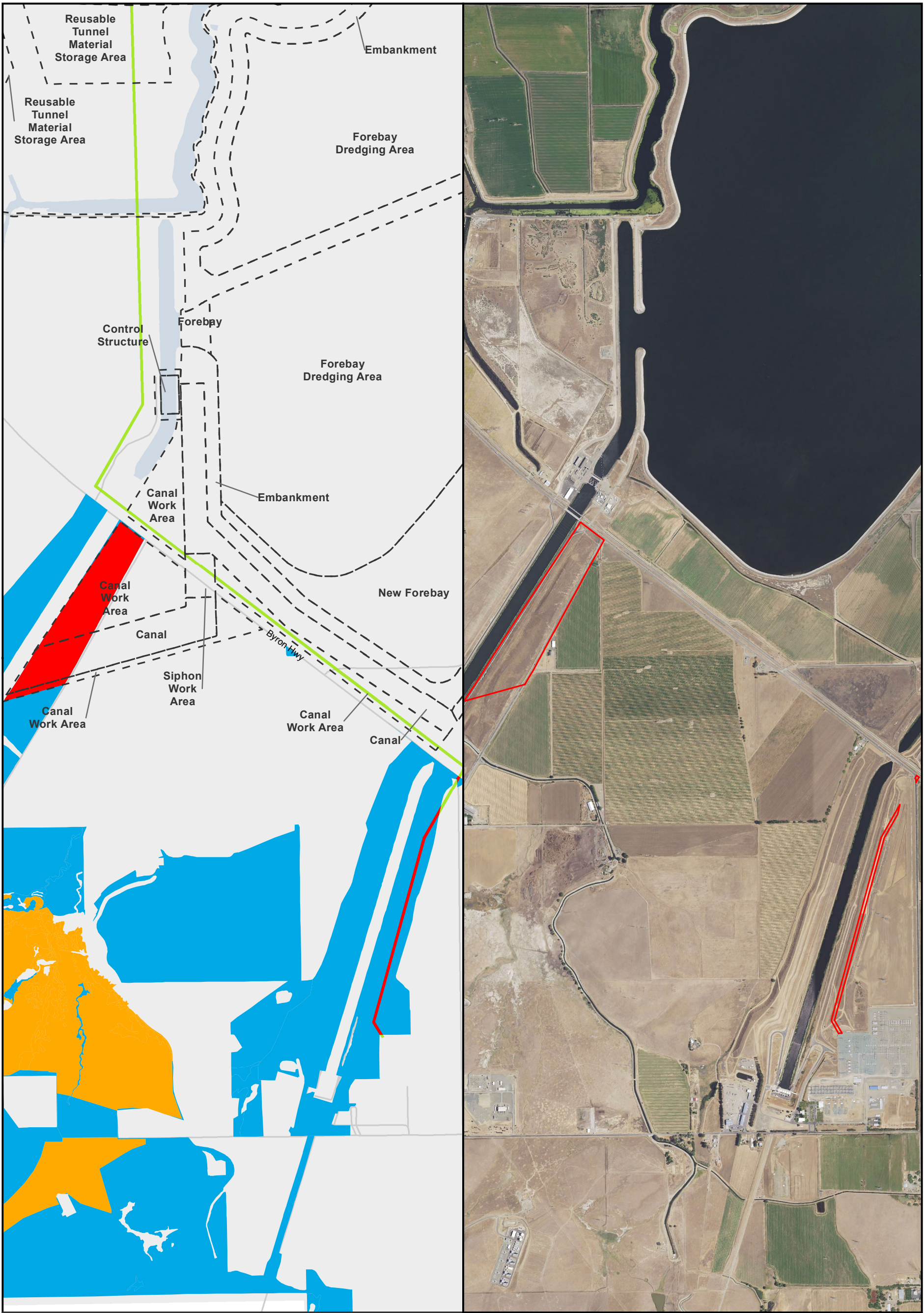


** Temporary work areas may be restored after construction is complete, however, for the purposes of impact analysis, the effect is considered permanent

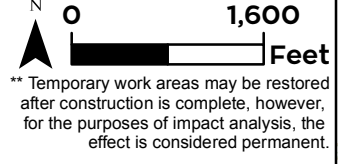
Sources: CCO Conveyance, CA WaterFix 2015; Species Occurrences, ICF 2013; Modeled Habitat, ICF 2013, ICF 2015; Critical Habitat, USFWS 2012



Y:\BiologicalAssess_ESA_Sect7_Permitting\ENV\126_15_SpeciesDistribution_2pane_201601.mxd 2016226 [c:\sb] [Doc No.: GIS-00204]



- City
 - Major roads
 - State and Interstate Highways
 - Delta Island
 - Critical Habitat
- California Tiger Salamander**
- Impacted Terrestrial Cover and Aestivation Habitat
 - Modeled Aquatic Breeding Habitat
 - Modeled Terrestrial Cover and Aestivation Habitat
- Project**
- Permanent Transmission Lines
 - Temporary Transmission Lines



** Temporary work areas may be restored after construction is complete, however, for the purposes of impact analysis, the effect is considered permanent.

** The location of the transmission lines have not been finalized. Transmission structures will be constructed to have the least impact to the surrounding habitats.



Sources: CCO Conveyance, CA WaterFix 2015; Species Occurrences, ICF 2013; Modeled Habitat, ICF 2013, ICF 2015; NAIP 2014

