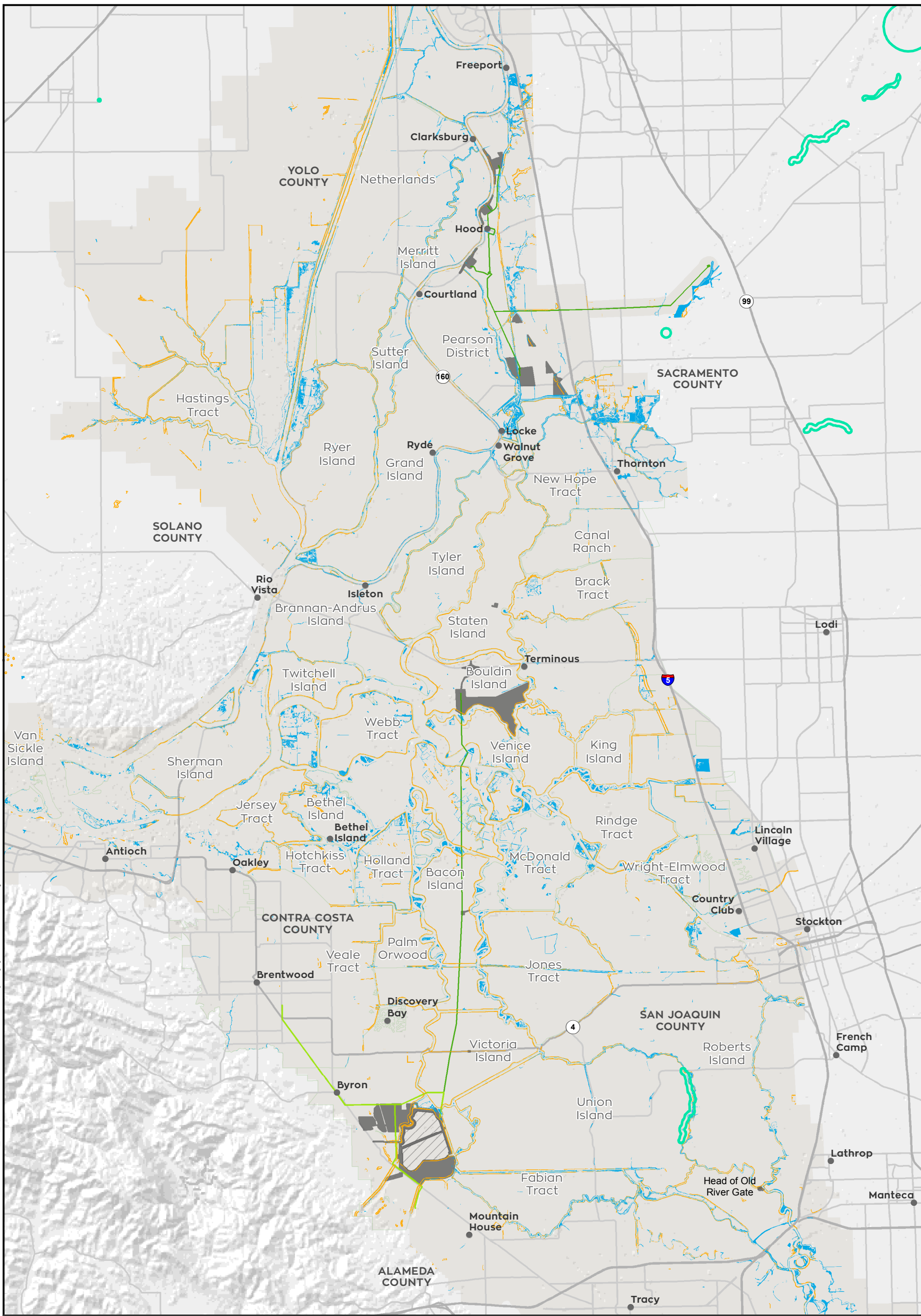


T:\WGI-38\GIS\_33\_00\GISRequest\_11\F\Deliverable\_10\EN\EN126\_15\EN\EN126\_15\_SpeciesDistribution.mxd 20151221 [cls] [Doc No: GIS-00204]



● City	<b>Valley Elderberry Longhorn Beetle</b>	■ Construction Surface Impact
□ Delta Islands	■ Modeled Nonriparian Habitat	■ Permanent Transmission
<b>Action Area</b>	■ Modeled Riparian Habitat	■ Temporary Transmission
□ Legal Delta and Transmission Line Corridor	■ Species Occurrence	

N  
 0 20,000 Feet

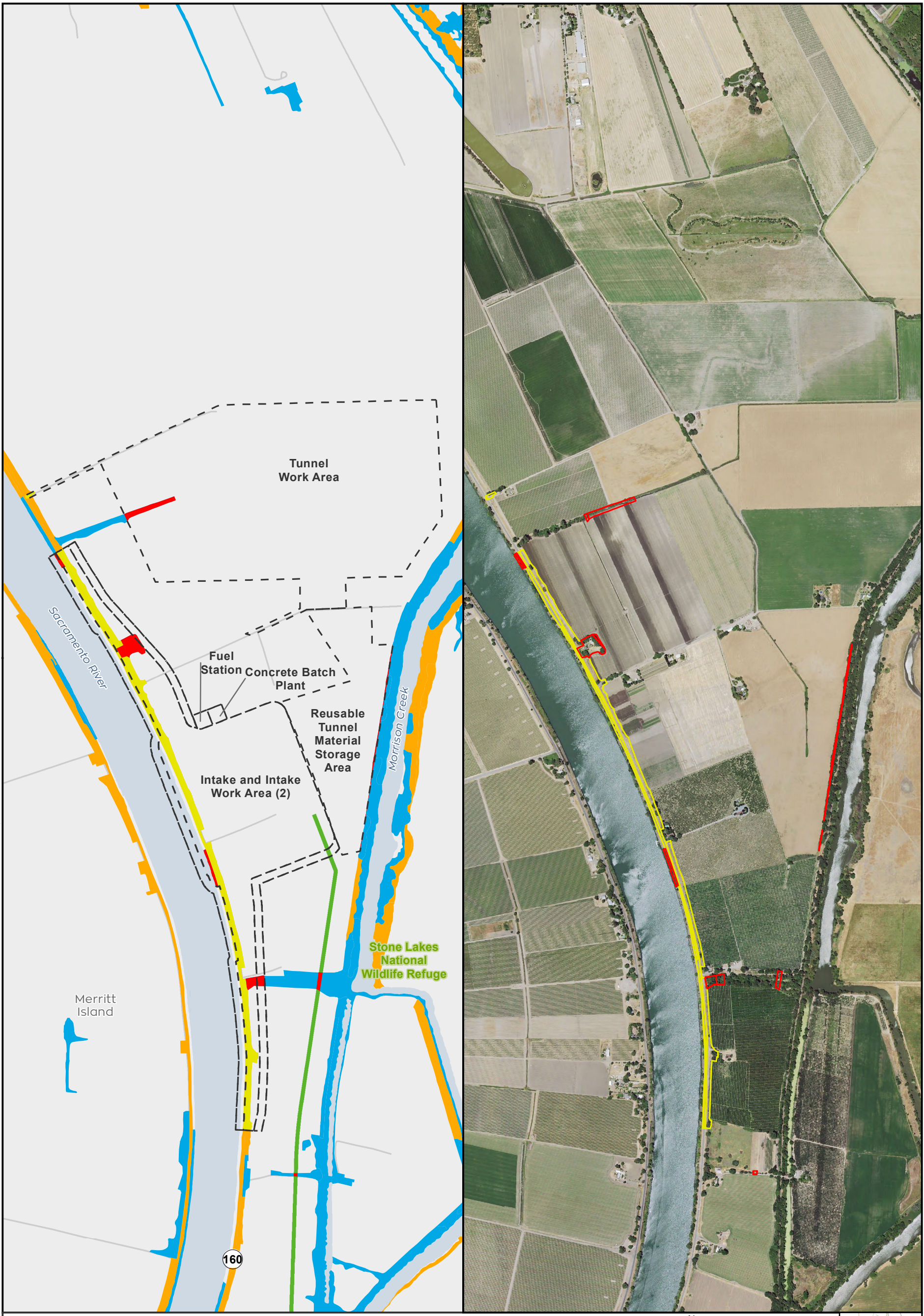
\*\* Temporary work areas may be restored after construction is complete, however, for the purposes of impact analysis, the effect is considered permanent

Sources: CCO Conveyance, CA WaterFix 2015; Species Occurrences, ICF 2013; Modeled Habitat, ICF 2013, ICF 2015; Critical Habitat, USFWS 2012



**Impacts to Valley Elderberry Longhorn Beetle Modeled Habitat from Water Conveyance Facility Construction  
Modified Pipeline Tunnel/Clifton Court Forebay Option  
Figure 6.10-1 of 6.10-29**

T:\W\GIS\38\GIS\_33\_00\GISRequest\_11\F\Deliverable\_10\F\ENV\126\_15\SpeciesDistribution\_2pane\_201509.mxd 20151111 [c:\sb] [Doc No: GIS-00204]

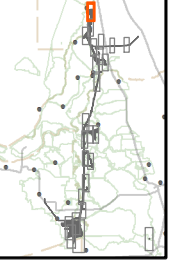


- City
  - State and Interstate Highways
  - Major roads
  - Delta Island
- Valley Elderberry Longhorn Beetle**
- Impacted Modeled Nonriparian Habitat
  - Impacted Modeled Riparian Habitat
  - Modeled Nonriparian Habitat
  - Modeled Riparian Habitat
- Conveyance Construction Footprint
  - Permanent Transmission Lines
  - Temporary Transmission Lines

N 0 1,200 Feet

\*\* Temporary work areas may be restored after construction is complete, however, for the purposes of impact analysis, the effect is considered permanent.

\*\* The location of the transmission lines have not been finalized. Transmission structures will be constructed to have the least impact to the surrounding habitats.



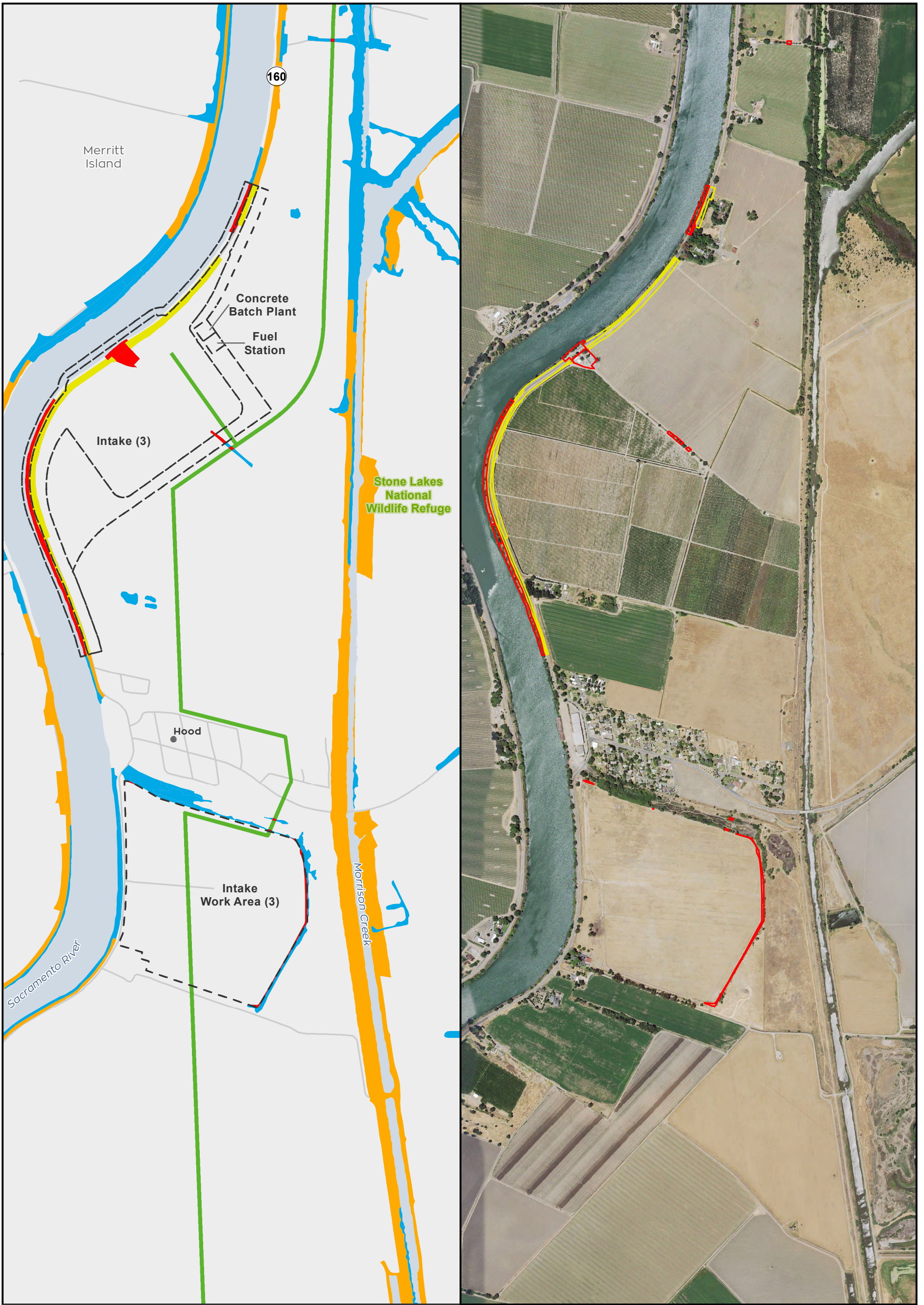
Sources: CCO Conveyance, CA WaterFix 2015; Species Occurrences, ICF 2013; Modeled Habitat, ICF 2013, ICF 2015; NAIP 2014



**Impacts to Valley Elderberry Longhorn Beetle Modeled Habitat from Water Conveyance Facility Construction  
Modified Pipeline Tunnel/Clifton Court Forebay Option  
Intake 2**

**Figure 6.10-2 of 6.10-26**

T:\WGI-38\GIS\_33\_00\GISRequest\_11\F\Deliverable\_11\F\ENV\126\_15\SpeciesDistribution\_2pane\_201509.mxd 20151111 [c:\isb] [Doc No: GIS-00204]

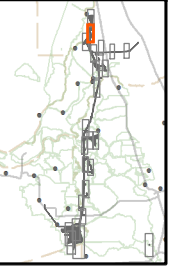


- City
  - State and Interstate Highways
  - Major roads
  - Delta Island
- Valley Elderberry Longhorn Beetle**
- Impacted Modeled Nonriparian Habitat
  - Impacted Modeled Riparian Habitat
  - Modeled Nonriparian Habitat
  - Modeled Riparian Habitat
- Conveyance Construction Footprint
  - Permanent Transmission Lines
  - Temporary Transmission Lines



\*\* Temporary work areas may be restored after construction is complete, however, for the purposes of impact analysis, the effect is considered permanent.

\*\* The location of the transmission lines have not been finalized. Transmission structures will be constructed to have the least impact to the surrounding habitats.



Sources: CCO Conveyance, CA WaterFix 2015; Species Occurrences, ICF 2013; Modeled Habitat, ICF 2013, ICF 2015; NAIP 2014



**Impacts to Valley Elderberry Longhorn Beetle Modeled Habitat from Water Conveyance Facility Construction  
Modified Pipeline Tunnel/Clifton Court Forebay Option  
Intake 3**

**Figure 6.10-3 of 6.10-26**

T:\WGI-38\GIS\_33\_00\GISRequest\_11\F\Deliverable\_10\F\EN\126\_15\EN\126\_15\_SpeciesDistribution\_2pane\_201509.mxd 20151111 [c:\isb] [Doc No: GIS-00204]



<ul style="list-style-type: none"> <li>● City</li> <li>— State and Interstate Highways</li> <li>— Major roads</li> <li>— Delta Island</li> </ul>	<p><b>Valley Elderberry Longhorn Beetle</b></p> <ul style="list-style-type: none"> <li>■ Impacted Modeled Nonriparian Habitat</li> <li>■ Impacted Modeled Riparian Habitat</li> <li>■ Modeled Nonriparian Habitat</li> <li>■ Modeled Riparian Habitat</li> </ul>	<ul style="list-style-type: none"> <li>— Conveyance Construction Footprint</li> <li>— Permanent Transmission Lines</li> <li>— Temporary Transmission Lines</li> </ul>	<p>N</p> <p>0 1,200 Feet</p> <p>** Temporary work areas may be restored after construction is complete, however, for the purposes of impact analysis, the effect is considered permanent.</p> <p>** The location of the transmission lines have not been finalized. Transmission structures will be constructed to have the least impact to the surrounding habitats.</p>
--	--	---	---

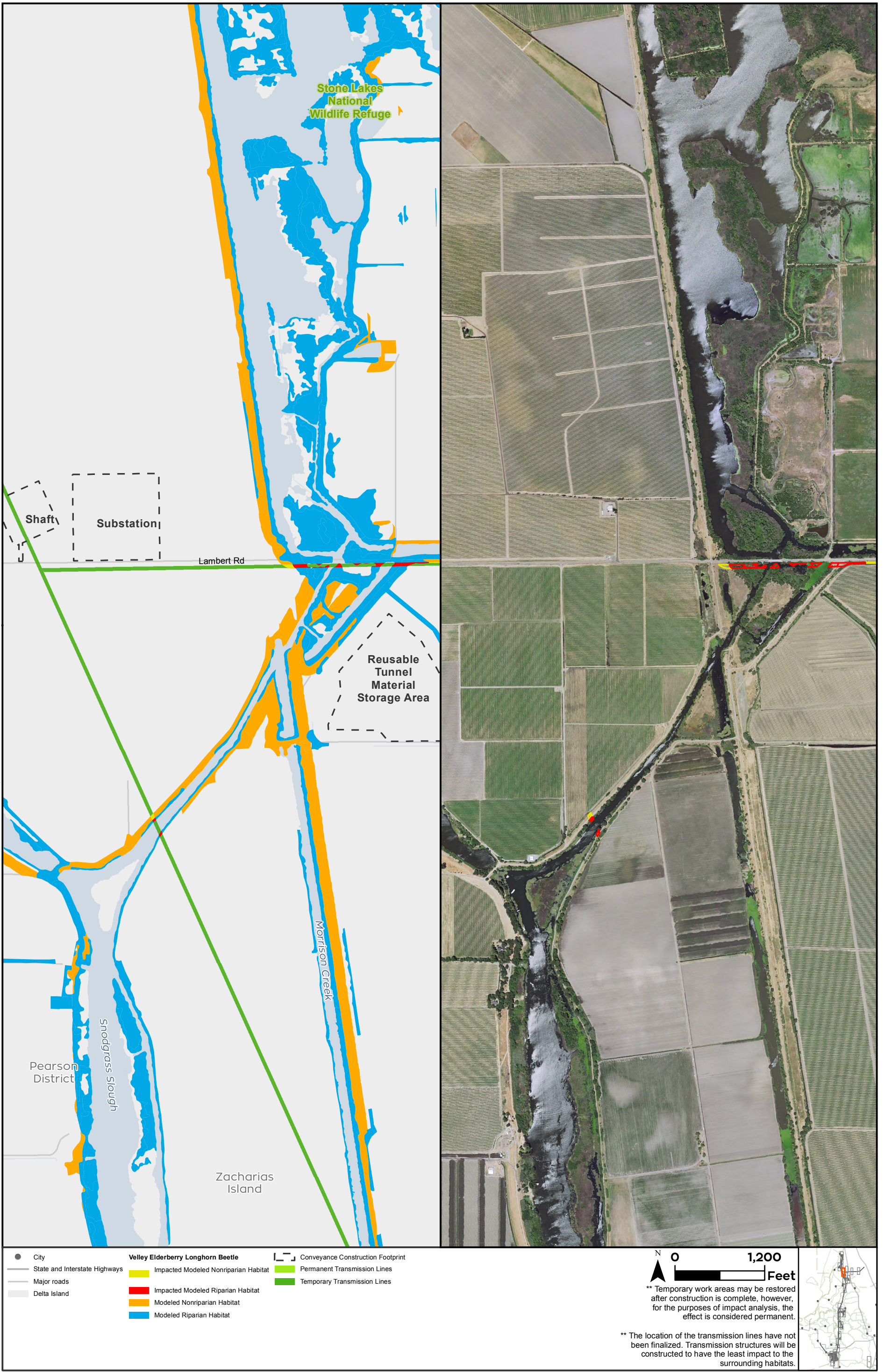
Sources: CCO Conveyance, CA WaterFix 2015; Species Occurrences, ICF 2013; Modeled Habitat, ICF 2013, ICF 2015; NAIP 2014



**Impacts to Valley Elderberry Longhorn Beetle Modeled Habitat from Water Conveyance Facility Construction  
Modified Pipeline Tunnel/Clifton Court Forebay Option  
Intake 5**

**Figure 6.10-4 of 6.10-26**

T:\WGI-38\GIS\_33\_00\GISRequest\_11\F\Deliverable\_11\F\EN\126\_15\EN\126\_15\_SpeciesDistribution\_2pane\_201509.mxd 20151111 [c:\sb] [Doc No: GIS-00204]

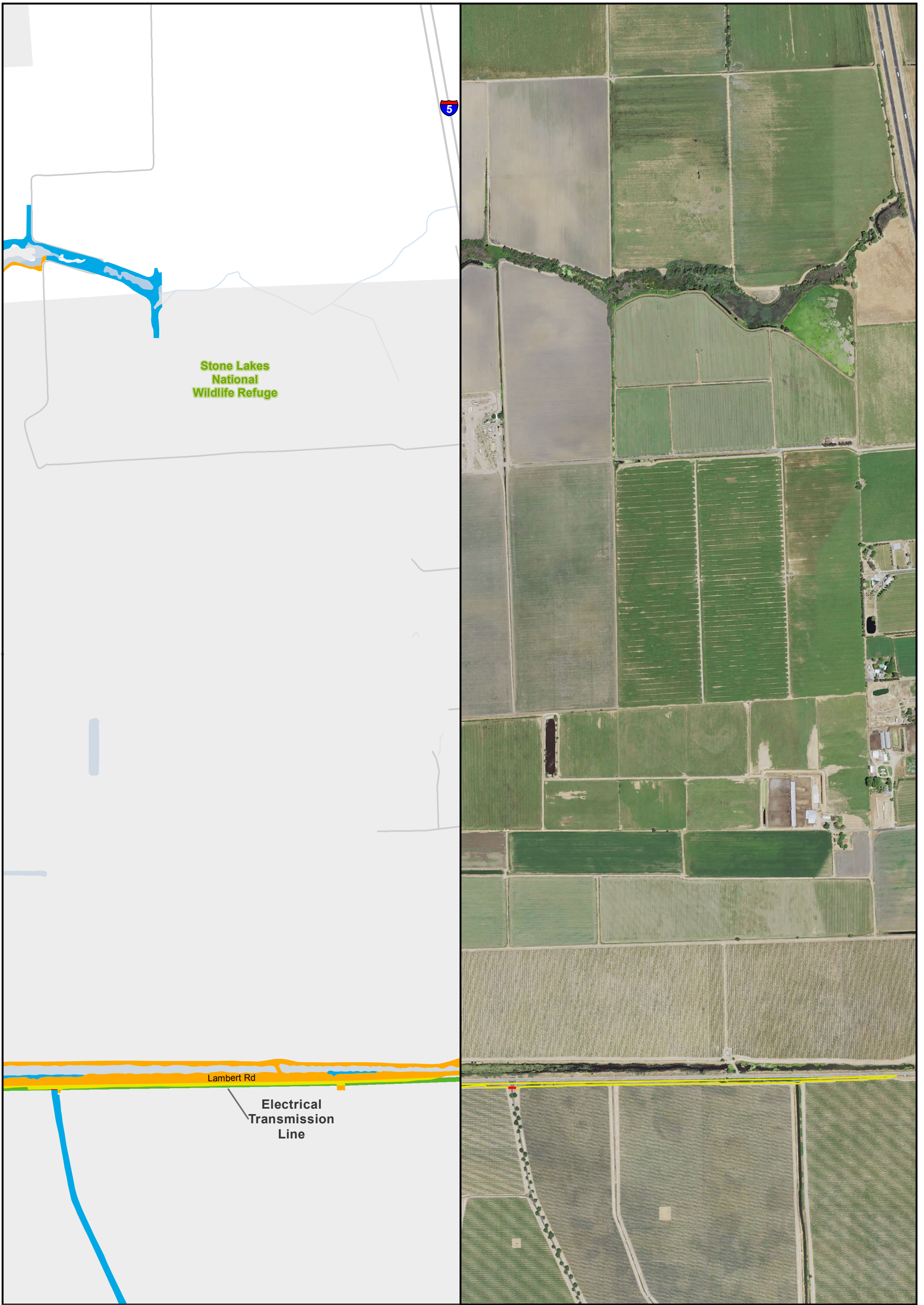


Sources: CCO Conveyance, CA WaterFix 2015; Species Occurrences, ICF 2013; Modeled Habitat, ICF 2013, ICF 2015; NAIP 2014



**Impacts to Valley Elderberry Longhorn Beetle Modeled Habitat from Water Conveyance Facility Construction Modified Pipeline Tunnel/Clifton Court Forebay Option Transmission Line - Intermediate Forebay**  
**Figure 6.10-5 of 6.10-26**

T:\WGI-38\GIS\_33\_00\GISRequest\_11\F\Deliverable\_10\EN\126\_15\EN\126\_15\_SpeciesDistribution\_2pane\_201509.mxd 20151111 [c:\isb] [Doc No: GIS-00204]

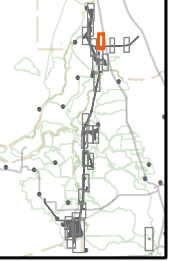


- |                                 |  |                                     |
|---------------------------------|--|-------------------------------------|
| ● City                          | <b>Valley Elderberry Longhorn Beetle</b> | ▭ Conveyance Construction Footprint |
| — State and Interstate Highways | ▭ Impacted Modeled Nonriparian Habitat   | ▭ Permanent Transmission Lines      |
| — Major roads                   | ▭ Impacted Modeled Riparian Habitat      | ▭ Temporary Transmission Lines      |
| ▭ Delta Island                  | ▭ Modeled Nonriparian Habitat            |                                     |
|                                 | ▭ Modeled Riparian Habitat               |                                     |

N 0 1,000 Feet

\*\* Temporary work areas may be restored after construction is complete, however, for the purposes of impact analysis, the effect is considered permanent.

\*\* The location of the transmission lines have not been finalized. Transmission structures will be constructed to have the least impact to the surrounding habitats.

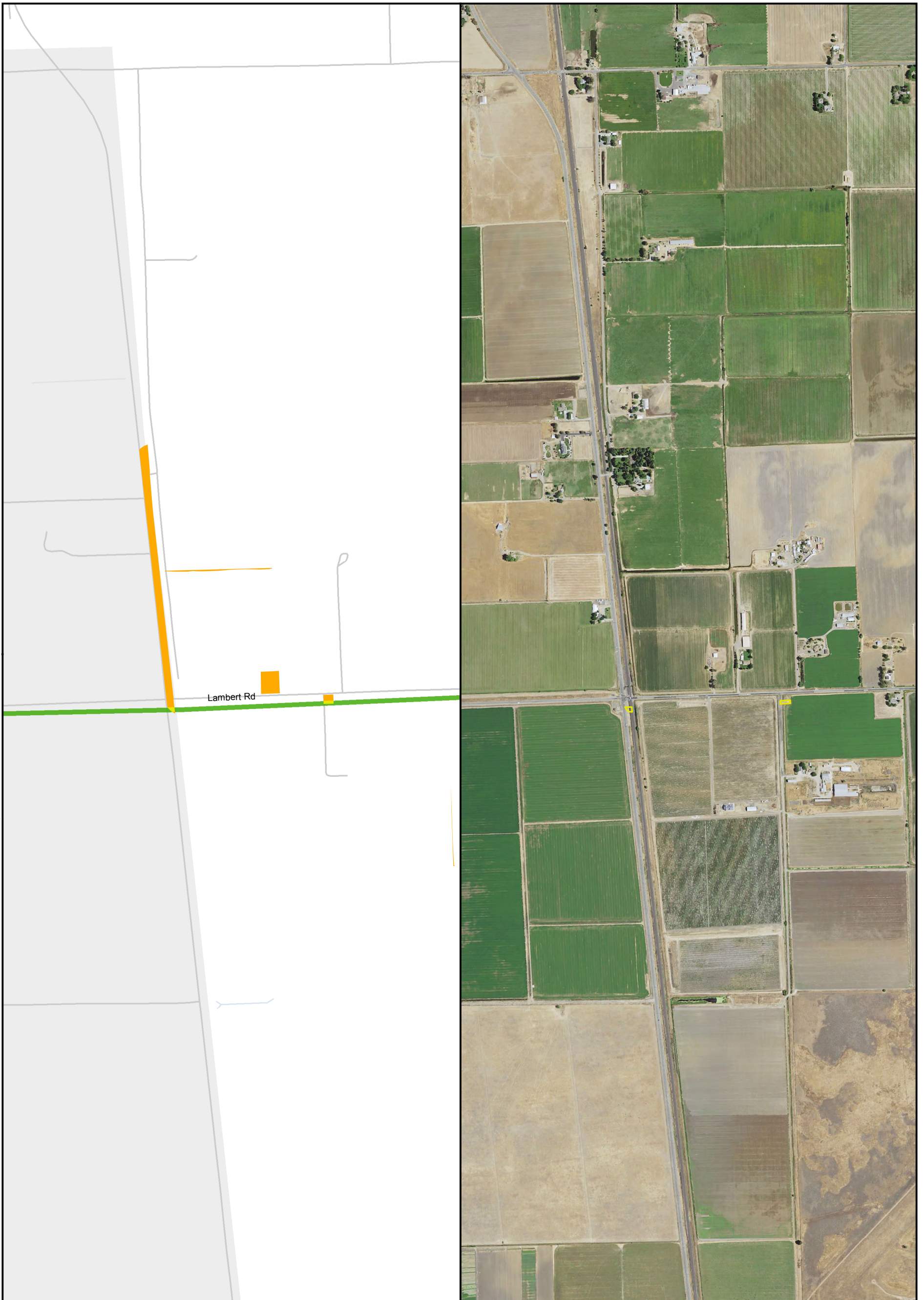


Sources: CCO Conveyance, CA WaterFix 2015; Species Occurrences, ICF 2013; Modeled Habitat, ICF 2013, ICF 2015; NAIP 2014

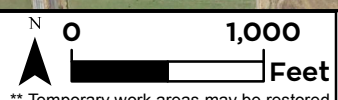


**Impacts to Valley Elderberry Longhorn Beetle Modeled Habitat from Water Conveyance Facility Construction Modified Pipeline Tunnel/Clifton Court Forebay Option Transmission Line - East leg**  
**Figure 6.10-6 of 6.10-26**

T:\WGI-38\GIS\_33\_00\GISRequest\_11\F\Deliverable\_10\F\ENV\126\_15\ENV\126\_15\_SpeciesDistribution\_2pane\_201509.mxd 20151111 [c:\isb] [Doc No: GIS-00204]

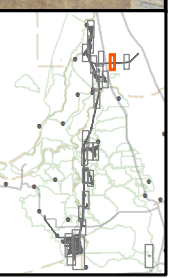


- City
  - State and Interstate Highways
  - Major roads
  - Delta Island
- Valley Elderberry Longhorn Beetle**
- Impacted Modeled Nonriparian Habitat
  - Impacted Modeled Riparian Habitat
  - Modeled Nonriparian Habitat
  - Modeled Riparian Habitat
- Conveyance Construction Footprint
- Permanent Transmission Lines
  - Temporary Transmission Lines



\*\* Temporary work areas may be restored after construction is complete, however, for the purposes of impact analysis, the effect is considered permanent.

\*\* The location of the transmission lines have not been finalized. Transmission structures will be constructed to have the least impact to the surrounding habitats.

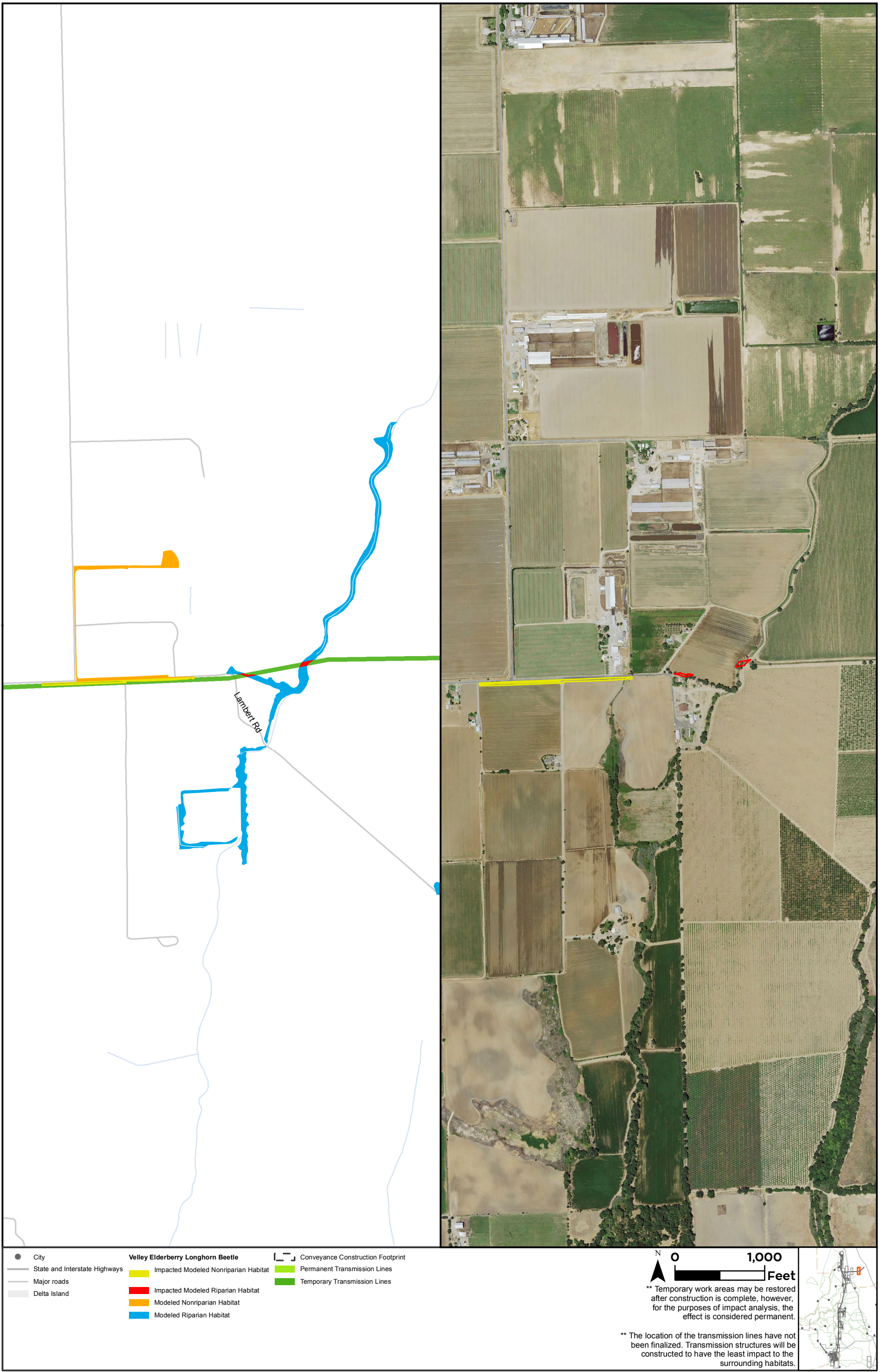


Sources: CCO Conveyance, CA WaterFix 2015; Species Occurrences, ICF 2013; Modeled Habitat, ICF 2013, ICF 2015; NAIP 2014

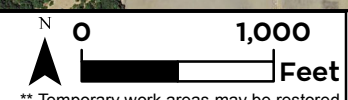


**Impacts to Valley Elderberry Longhorn Beetle Modeled Habitat from Water Conveyance Facility Construction Modified Pipeline Tunnel/Clifton Court Forebay Option Transmission Line - East leg**  
**Figure 6.10-7 of 6.10-26**

T:\WGI-38\GIS\_33\_00\GISRequest\_11\F\Deliverable\_10\EN\126\_15\EN\126\_15\_SpeciesDistribution\_2pane\_201509.mxd 20151111 [c:\isb] [Doc No: GIS-00204]



- City
  - State and Interstate Highways
  - Major roads
  - Delta Island
- Valley Elderberry Longhorn Beetle**
- Impacted Modeled Nonriparian Habitat
  - Impacted Modeled Riparian Habitat
  - Modeled Nonriparian Habitat
  - Modeled Riparian Habitat
- Conveyance Construction Footprint
  - Permanent Transmission Lines
  - Temporary Transmission Lines



\*\* Temporary work areas may be restored after construction is complete, however, for the purposes of impact analysis, the effect is considered permanent.

\*\* The location of the transmission lines have not been finalized. Transmission structures will be constructed to have the least impact to the surrounding habitats.



Sources: CCO Conveyance, CA WaterFix 2015; Species Occurrences, ICF 2013; Modeled Habitat, ICF 2013, ICF 2015; NAIP 2014



**Impacts to Valley Elderberry Longhorn Beetle Modeled Habitat from Water Conveyance Facility Construction  
Modified Pipeline Tunnel/Clifton Court Forebay Option  
Transmission Line - East leg  
Figure 6.10-8 of 6.10-26**



T:\WGI-38\GIS\_33\_00\GISRequest\_11\F\Deliverable\_11\F\ENNV126\_15\ENNV126\_15\_SpeciesDistribution\_2pane\_20151111 [ciss] [Doc No: GIS-00204]



● City  
 — State and Interstate Highways  
 — Major roads  
 — Delta Island  
**Valley Elderberry Longhorn Beetle**  
 ■ Impacted Modeled Nonriparian Habitat  
 ■ Impacted Modeled Riparian Habitat  
 ■ Modeled Nonriparian Habitat  
 ■ Modeled Riparian Habitat  
 — Conveyance Construction Footprint  
 ■ Permanent Transmission Lines  
 ■ Temporary Transmission Lines

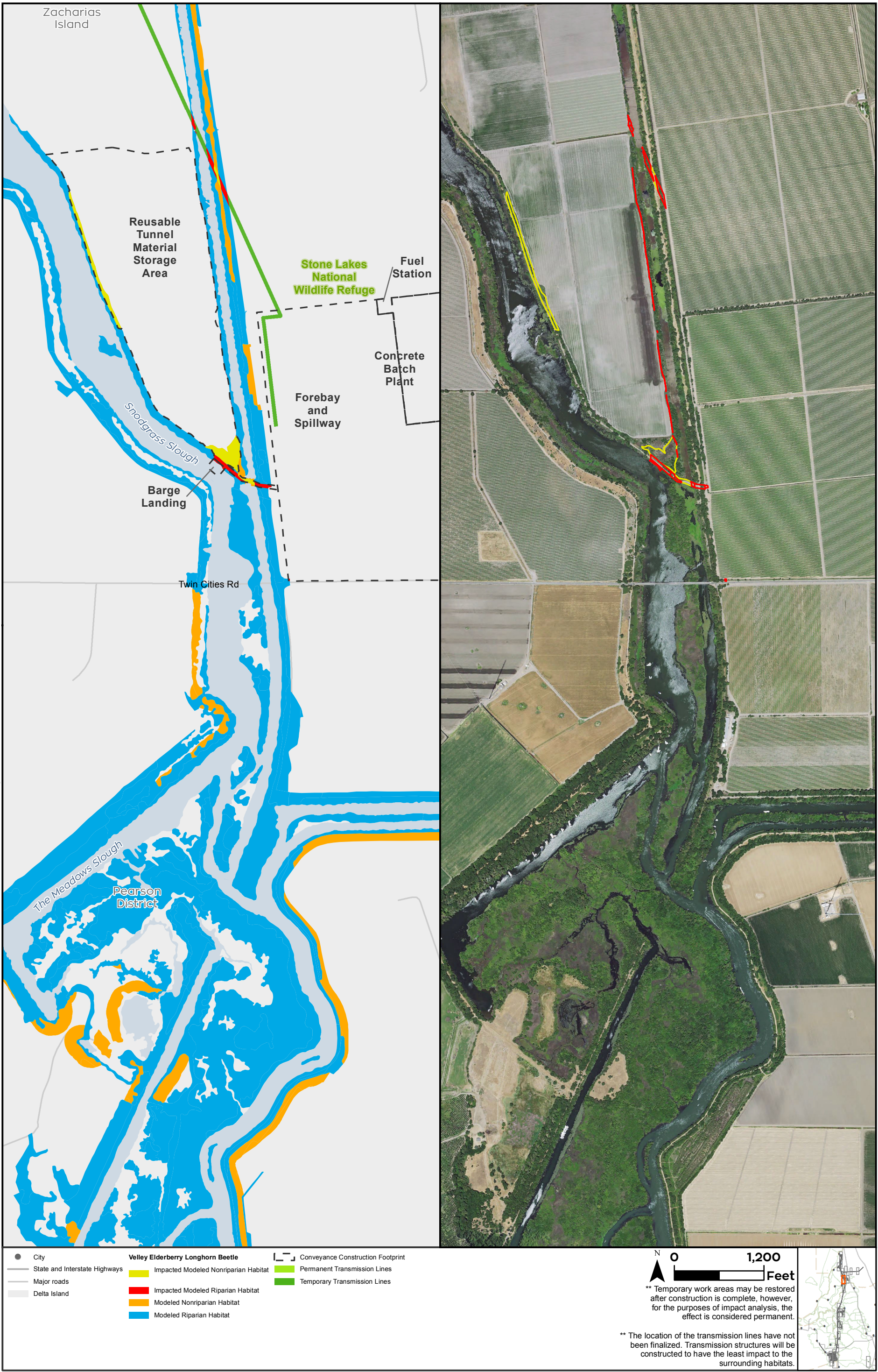
N  
 0 1,200 Feet  
 \*\* Temporary work areas may be restored after construction is complete, however, for the purposes of impact analysis, the effect is considered permanent.  
 \*\* The location of the transmission lines have not been finalized. Transmission structures will be constructed to have the least impact to the surrounding habitats.

Sources: CCO Conveyance, CA WaterFix 2015; Species Occurrences, ICF 2013; Modeled Habitat, ICF 2013, ICF 2015; NAIP 2014



**Impacts to Valley Elderberry Longhorn Beetle Modeled Habitat from Water Conveyance Facility Construction**  
**Modified Pipeline Tunnel/Clifton Court Forebay Option**  
**Reusable Tunnel Material at Intermediate Forebay**  
**Figure 6.10-9 of 6.10-26**

T:\WGI-38\GIS\_33\_00\GISRequest\_11\F\Deliverable\_11\F\EN\126\_15\EN\126\_15\_SpeciesDistribution\_2pane\_201509.mxd 20151111 [sib] [Doc No: GIS-00204]



- City
- State and Interstate Highways
- Major roads
- Delta Island
- Valley Elderberry Longhorn Beetle**
- Impacted Modeled Nonriparian Habitat
- Impacted Modeled Riparian Habitat
- Modeled Nonriparian Habitat
- Modeled Riparian Habitat
- Conveyance Construction Footprint
- Permanent Transmission Lines
- Temporary Transmission Lines

N 0 1,200 Feet

\*\* Temporary work areas may be restored after construction is complete, however, for the purposes of impact analysis, the effect is considered permanent.

\*\* The location of the transmission lines have not been finalized. Transmission structures will be constructed to have the least impact to the surrounding habitats.

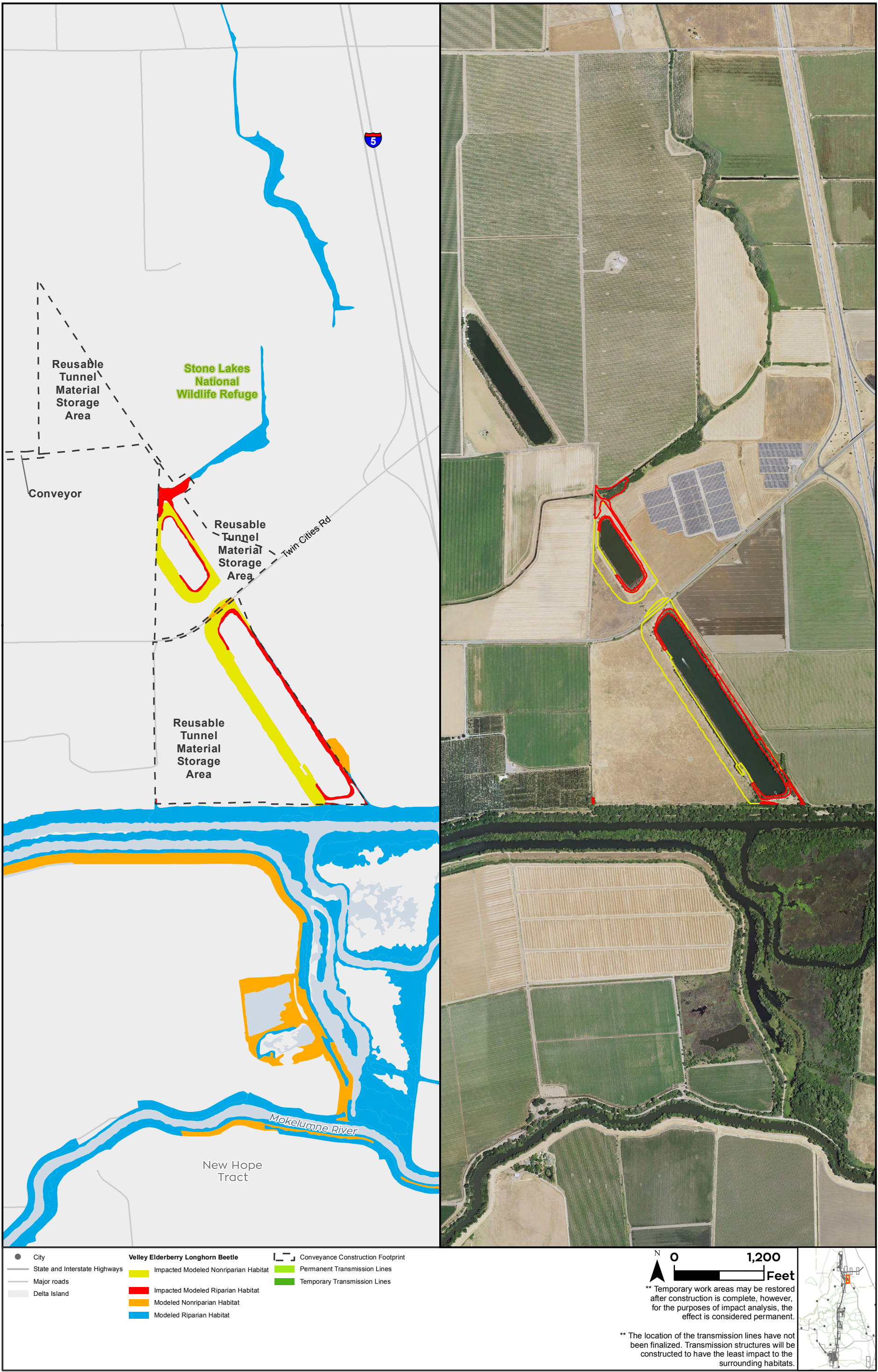


Sources: CCO Conveyance, CA WaterFix 2015; Species Occurrences, ICF 2013; Modeled Habitat, ICF 2013, ICF 2015; NAIP 2014



**Impacts to Valley Elderberry Longhorn Beetle Modeled Habitat from Water Conveyance Facility Construction Modified Pipeline Tunnel/Clifton Court Forebay Option Transmission Line - Intermediate Forebay Figure 6.10-10 of 6.10-26**

T:\WGI-38\GIS\_33\_00\GISRequest\_11\F\Deliverable\_11\F\EN\126\_15\_SpeciesDistribution\_2pane\_201509.mxd 20151111 [ciss] [Doc No: GIS-00204]



Sources: CCO Conveyance, CA WaterFix 2015; Species Occurrences, ICF 2013; Modeled Habitat, ICF 2013, ICF 2015; NAIP 2014



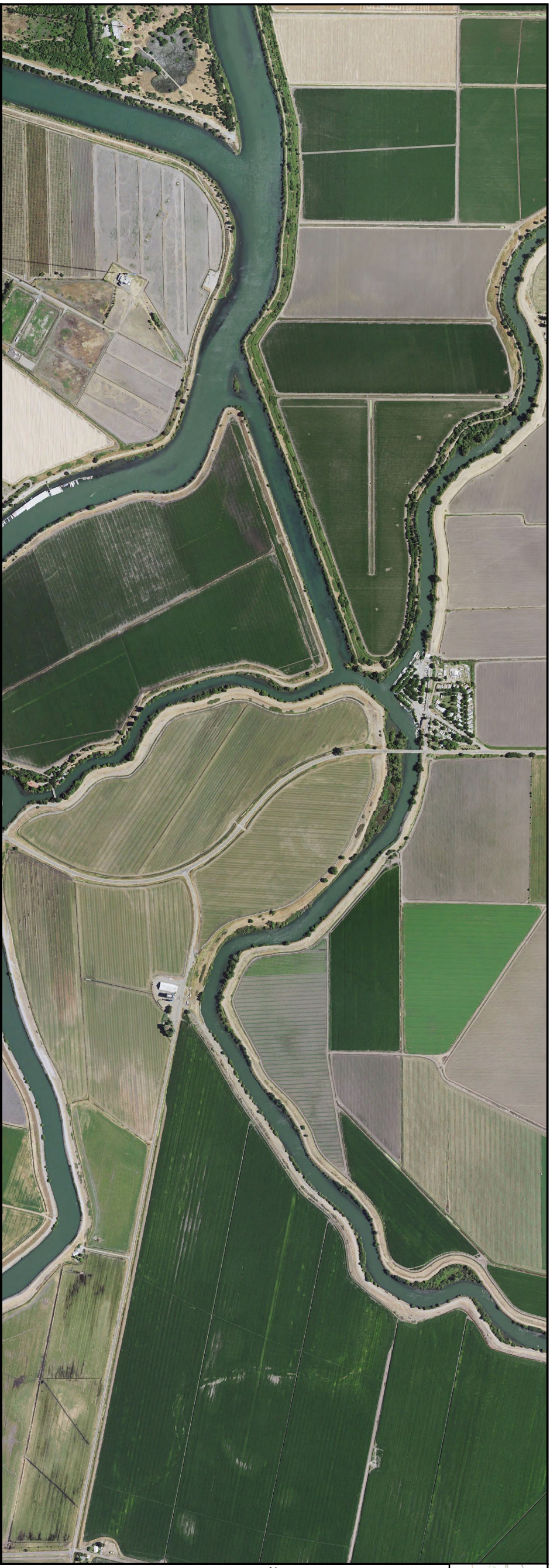
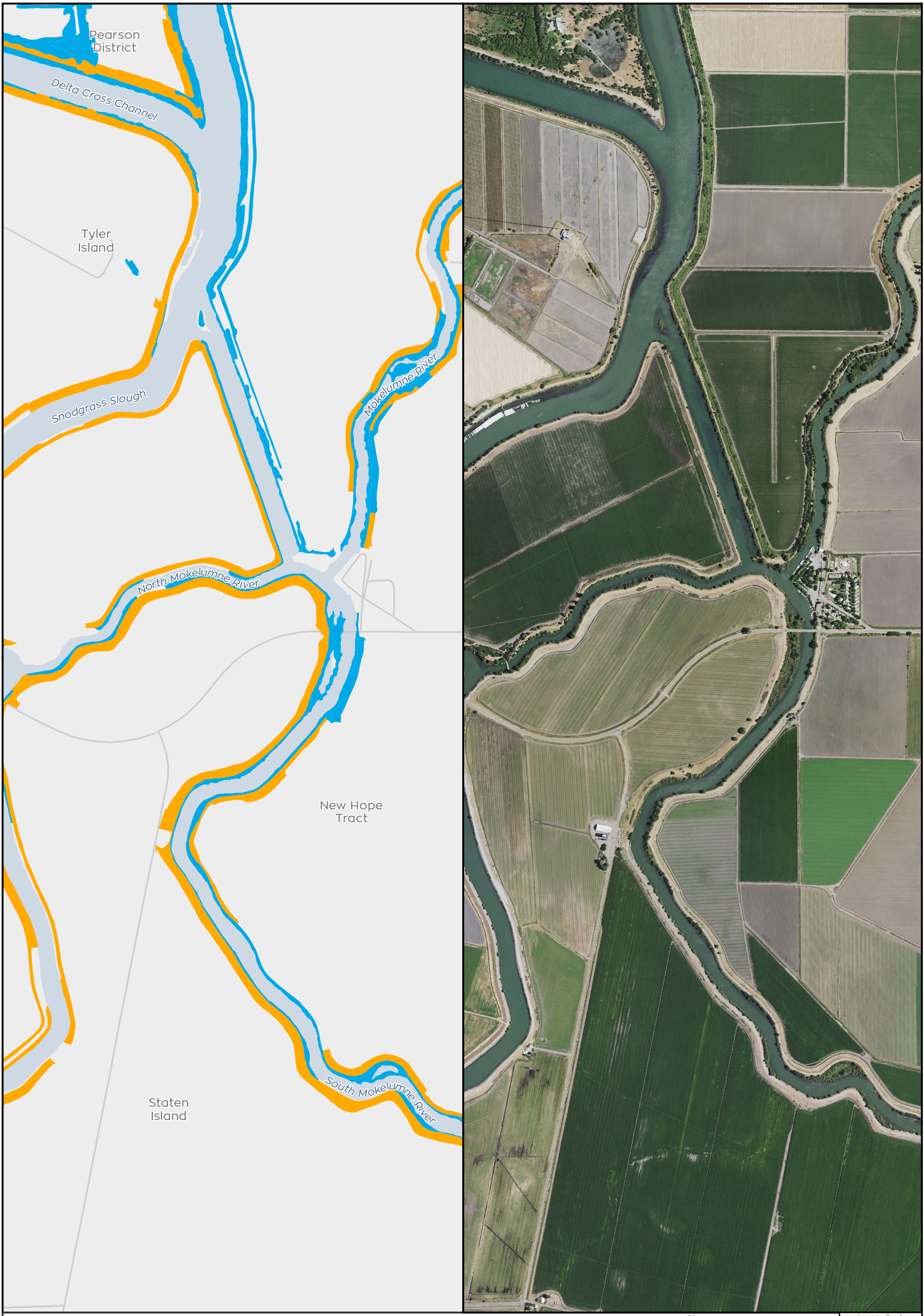
**Impacts to Valley Elderberry Longhorn Beetle Modeled Habitat from Water Conveyance Facility Construction**  
**Modified Pipeline Tunnel/Clifton Court Forebay Option**  
**Reusable Tunnel Material at Intermediate Forebay**  
**Figure 6.10-11 of 6.10-26**

0 1,200 Feet

\*\* Temporary work areas may be restored after construction is complete, however, for the purposes of impact analysis, the effect is considered permanent.

\*\* The location of the transmission lines have not been finalized. Transmission structures will be constructed to have the least impact to the surrounding habitats.

T:\WGI-38\GIS\_33\_00\GISRequest\_11\F\Deliverable\_11\F\EN\126\_15\EN\126\_15\_SpeciesDistribution\_2pane\_201509.mxd 20151111 [c:\isb] [Doc No: GIS-00204]



- City
  - State and Interstate Highways
  - Major roads
  - Delta Island
- Valley Elderberry Longhorn Beetle**
- Impacted Modeled Nonriparian Habitat
  - Impacted Modeled Riparian Habitat
  - Modeled Nonriparian Habitat
  - Modeled Riparian Habitat
- ▭ Conveyance Construction Footprint
  - ▭ Permanent Transmission Lines
  - ▭ Temporary Transmission Lines

0 1,200 Feet

\*\* Temporary work areas may be restored after construction is complete, however, for the purposes of impact analysis, the effect is considered permanent.

\*\* The location of the transmission lines have not been finalized. Transmission structures will be constructed to have the least impact to the surrounding habitats.



Sources: CCO Conveyance, CA WaterFix 2015; Species Occurrences, ICF 2013; Modeled Habitat, ICF 2013, ICF 2015; NAIP 2014



**Impacts to Valley Elderberry Longhorn Beetle Modeled Habitat from Water Conveyance Facility Construction Modified Pipeline Tunnel/Clifton Court Forebay Option Tunnel Work Area**

**Figure 6.10-12 of 6.10-26**

T:\WGI-38\GIS\_33\_00\GISRequest\_11\F\Deliverable\_10\EN\126\_15\EN\126\_15\_SpeciesDistribution\_2pane\_201509.mxd 20151111 [cslb] [Doc No: GIS-00204]

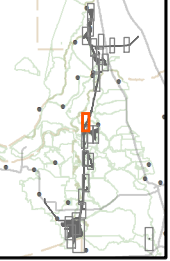


- City
- State and Interstate Highways
- Major roads
- Delta Island
- Valley Elderberry Longhorn Beetle**
- Impacted Modeled Nonriparian Habitat
- Impacted Modeled Riparian Habitat
- Modeled Nonriparian Habitat
- Modeled Riparian Habitat
- Conveyance Construction Footprint
- Permanent Transmission Lines
- Temporary Transmission Lines

N 0 1,200 Feet

\*\* Temporary work areas may be restored after construction is complete, however, for the purposes of impact analysis, the effect is considered permanent.

\*\* The location of the transmission lines have not been finalized. Transmission structures will be constructed to have the least impact to the surrounding habitats.

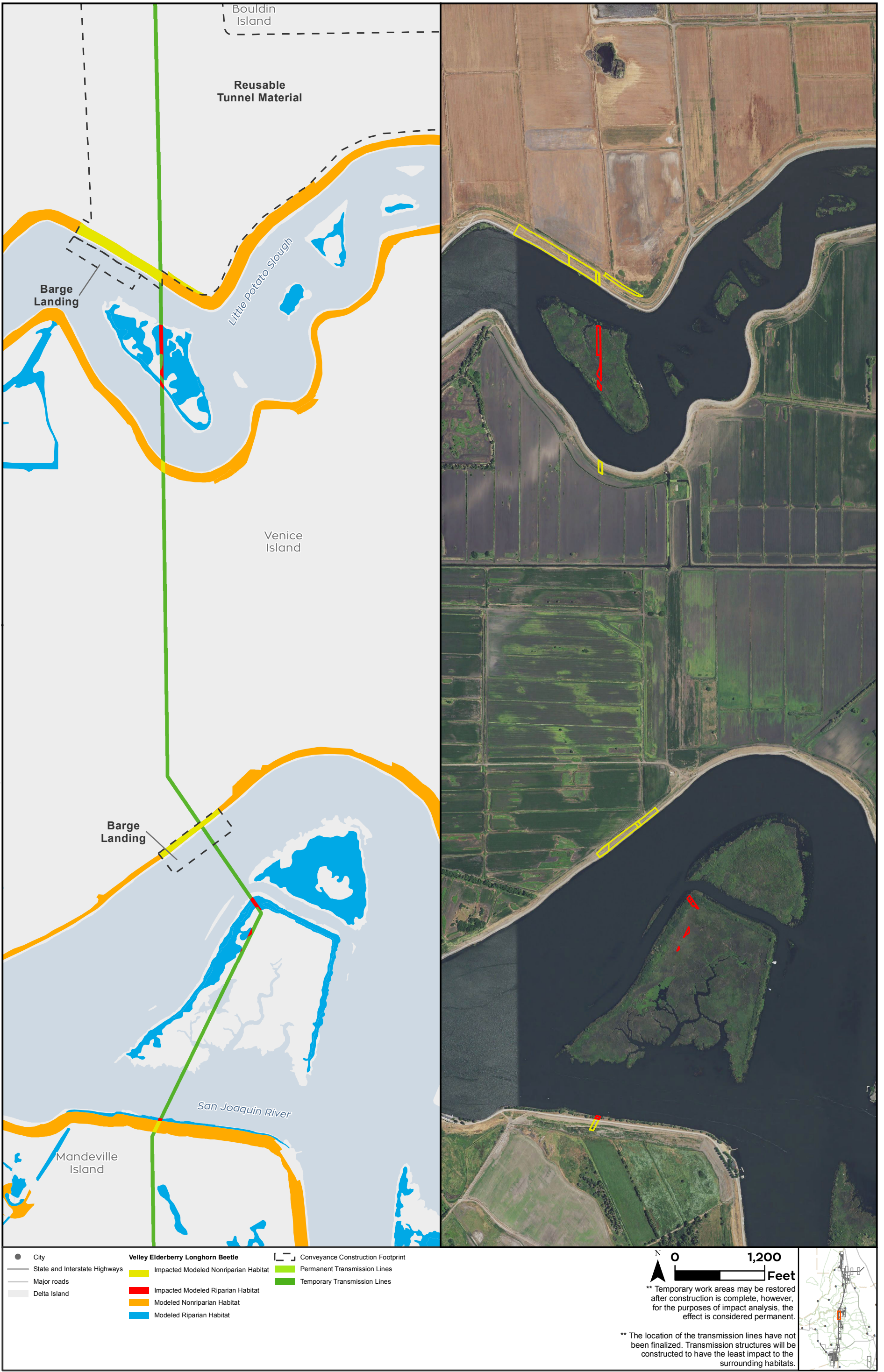


Sources: CCO Conveyance, CA WaterFix 2015; Species Occurrences, ICF 2013; Modeled Habitat, ICF 2013, ICF 2015; NAIP 2014



**Impacts to Valley Elderberry Longhorn Beetle Modeled Habitat from Water Conveyance Facility Construction Modified Pipeline Tunnel/Clifton Court Forebay Option Road Interchange & Shaft**  
**Figure 6.10-13 of 6.10-26**

T:\WGI-38\GIS\_33\_00\GISRequest\_11\F\Deliverable\_10\EN\126\_15\EN\126\_15\_SpeciesDistribution\_2pane\_201509.mxd 20151111 [c:\isb] [Doc No: GIS-00204]

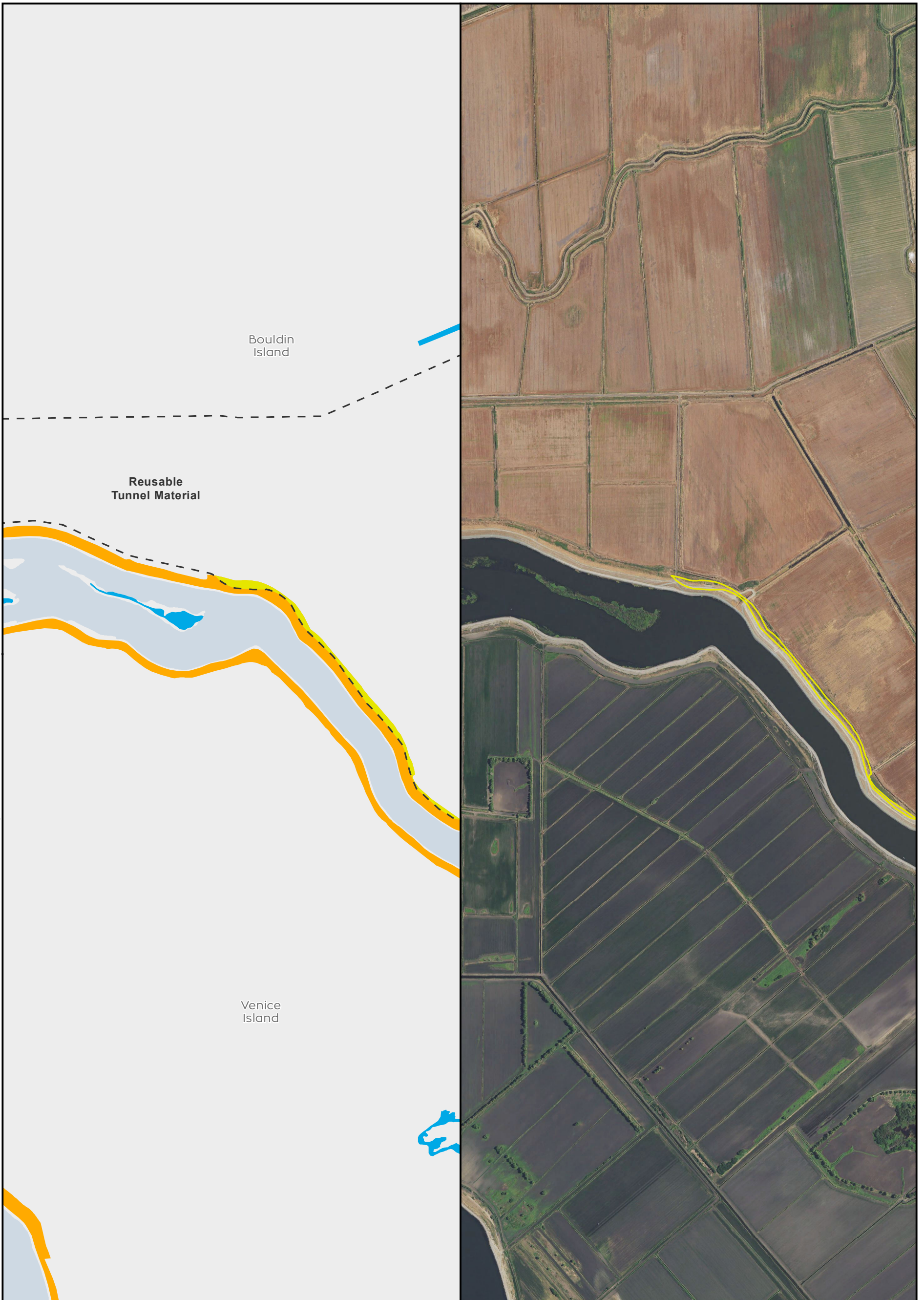


Sources: CCO Conveyance, CA WaterFix 2015; Species Occurrences, ICF 2013; Modeled Habitat, ICF 2013, ICF 2015; NAIP 2014

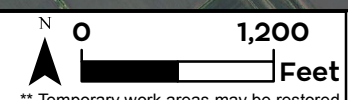


**Impacts to Valley Elderberry Longhorn Beetle Modeled Habitat from Water Conveyance Facility Construction  
 Modified Pipeline Tunnel/Clifton Court Forebay Option  
 Reusable Tunnel Material & Transmission Line  
 Figure 6.10-14 of 6.10-26**

T:\WGI-38\GIS\_33\_00\GISRequest\_11\F\Deliverable\_10\F\ENV\126\_15\ENV\126\_15\_SpeciesDistribution\_2pane\_201509.mxd 20151111 [c:\isb] [Doc No: GIS-00204]



- City
  - State and Interstate Highways
  - Major roads
  - Delta Island
- |  |   |
|--|---|
| <p><b>Valley Elderberry Longhorn Beetle</b></p> <ul style="list-style-type: none"> <li>■ Impacted Modeled Nonriparian Habitat</li> <li>■ Impacted Modeled Riparian Habitat</li> <li>■ Modeled Nonriparian Habitat</li> <li>■ Modeled Riparian Habitat</li> </ul> | <ul style="list-style-type: none"> <li>— Conveyance Construction Footprint</li> <li>■ Permanent Transmission Lines</li> <li>■ Temporary Transmission Lines</li> </ul> |
|--|---|



\*\* Temporary work areas may be restored after construction is complete, however, for the purposes of impact analysis, the effect is considered permanent.

\*\* The location of the transmission lines have not been finalized. Transmission structures will be constructed to have the least impact to the surrounding habitats.

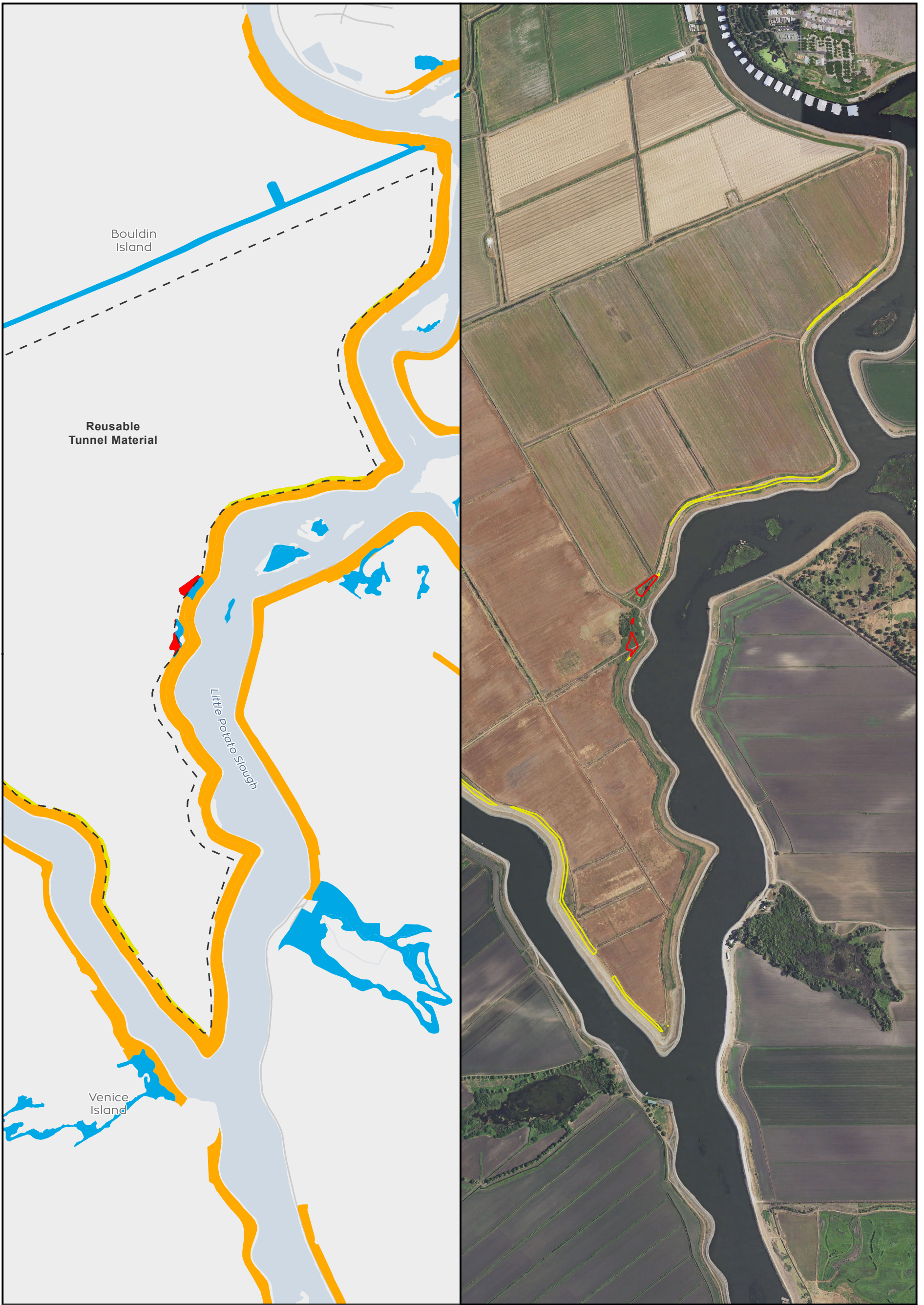


Sources: CCO Conveyance, CA WaterFix 2015; Species Occurrences, ICF 2013; Modeled Habitat, ICF 2013, ICF 2015; NAIP 2014



**Impacts to Valley Elderberry Longhorn Beetle Modeled Habitat from Water Conveyance Facility Construction  
Modified Pipeline Tunnel/Clifton Court Forebay Option  
Reusable Tunnel Material  
Figure 6.10-15 of 6.10-26**

T:\WGI-38\GIS\_33\_00\GISRequest\_11\F\Deliverable\_11\F\EN\126\_15\EN\126\_15\_SpeciesDistribution\_2pane\_201509.mxd 20151111 [ciss] [Doc No: GIS-00204]

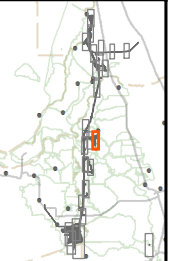


- City
  - State and Interstate Highways
  - Major roads
  - Delta Island
- |  |   |
|--|---|
| <p><b>Valley Elderberry Longhorn Beetle</b></p> <ul style="list-style-type: none"> <li>■ Impacted Modeled Nonriparian Habitat</li> <li>■ Impacted Modeled Riparian Habitat</li> <li>■ Modeled Nonriparian Habitat</li> <li>■ Modeled Riparian Habitat</li> </ul> | <ul style="list-style-type: none"> <li>— Conveyance Construction Footprint</li> <li>— Permanent Transmission Lines</li> <li>— Temporary Transmission Lines</li> </ul> |
|--|---|



\*\* Temporary work areas may be restored after construction is complete, however, for the purposes of impact analysis, the effect is considered permanent.

\*\* The location of the transmission lines have not been finalized. Transmission structures will be constructed to have the least impact to the surrounding habitats.



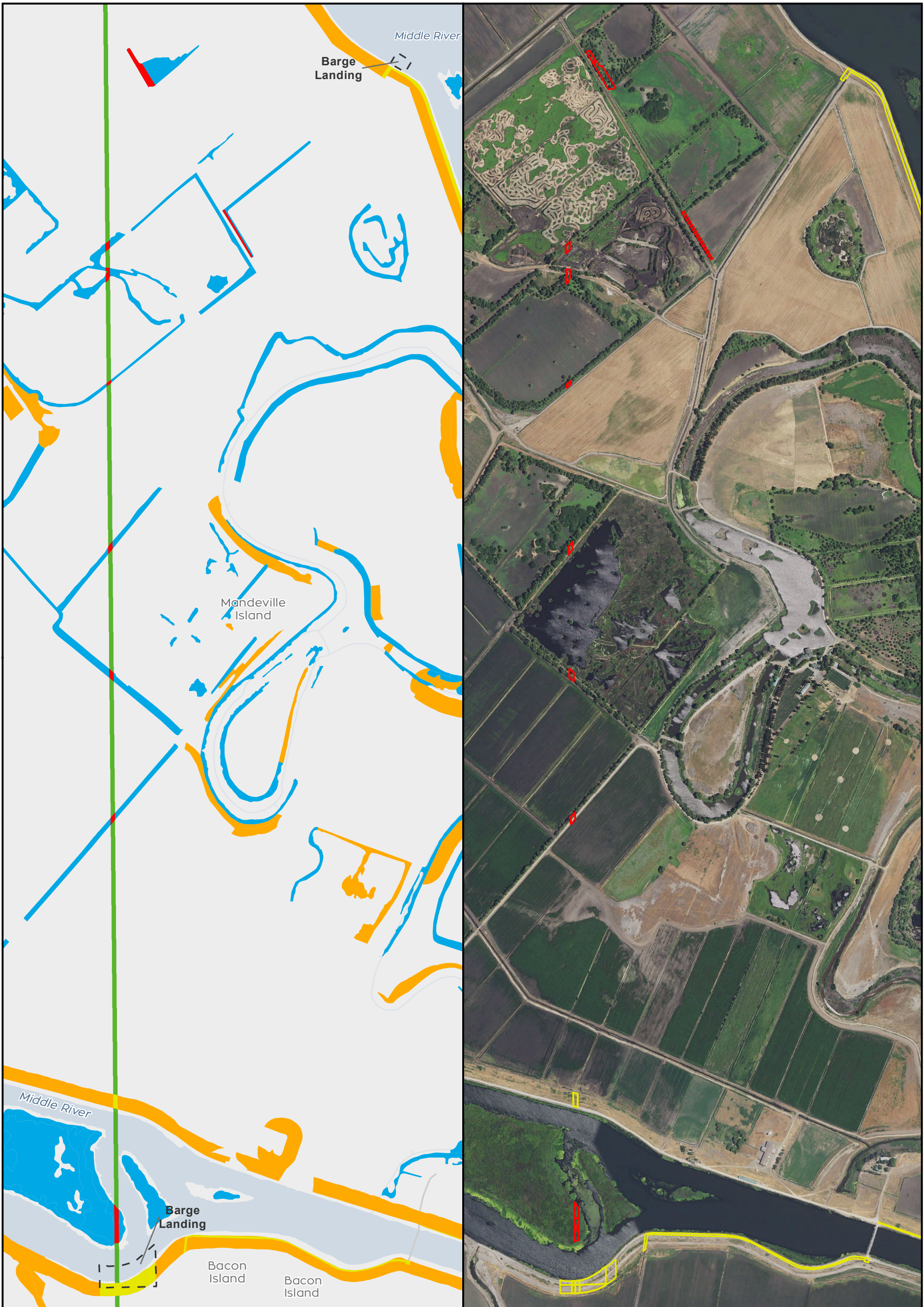
Sources: CCO Conveyance, CA WaterFix 2015; Species Occurrences, ICF 2013; Modeled Habitat, ICF 2013, ICF 2015; NAIP 2014



**Impacts to Valley Elderberry Longhorn Beetle Modeled Habitat from Water Conveyance Facility Construction  
Modified Pipeline Tunnel/Clifton Court Forebay Option  
Reusable Tunnel Material  
Figure 6.10-16 of 6.10-26**



T:\WGI-38\GIS\_33\_00\GISRequest\_11\F\Deliverable\_10\F\ENV\126\_15\_15\SpeciesDistribution\_2pane\_201509.mxd\_20151111 [c:\sb] [Doc No: GIS-00204]

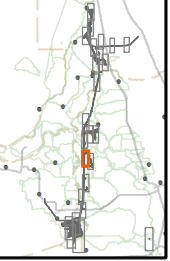


- City
  - State and Interstate Highways
  - Major roads
  - Delta Island
- Valley Elderberry Longhorn Beetle**
- Impacted Modeled Nonriparian Habitat
  - Impacted Modeled Riparian Habitat
  - Modeled Nonriparian Habitat
  - Modeled Riparian Habitat
- Conveyance Construction Footprint
  - Permanent Transmission Lines
  - Temporary Transmission Lines

N 0 1,100 Feet

\*\* Temporary work areas may be restored after construction is complete, however, for the purposes of impact analysis, the effect is considered permanent.

\*\* The location of the transmission lines have not been finalized. Transmission structures will be constructed to have the least impact to the surrounding habitats.



Sources: CCO Conveyance, CA WaterFix 2015; Species Occurrences, ICF 2013; Modeled Habitat, ICF 2013, ICF 2015; NAIP 2014



**Impacts to Valley Elderberry Longhorn Beetle Modeled Habitat from Water Conveyance Facility Construction Modified Pipeline Tunnel/Clifton Court Forebay Option Tunnel Work Area & Transmission Line Figure 6.10-17 of 6.10-26**

T:\WGI-38\GIS\_33\_00\GISRequest\_11\F\Deliverable\_10\F\ENV\126\_15\EN\126\_15\_SpeciesDistribution\_2pane\_201509.mxd 20151111 [cib] [Doc No: GIS-00204]



- City
  - State and Interstate Highways
  - Major roads
  - Delta Island
- Valley Elderberry Longhorn Beetle**
- Impacted Modeled Nonriparian Habitat
  - Impacted Modeled Riparian Habitat
  - Modeled Nonriparian Habitat
  - Modeled Riparian Habitat
- Conveyance Construction Footprint
  - Permanent Transmission Lines
  - Temporary Transmission Lines

N 0 1,100 Feet

\*\* Temporary work areas may be restored after construction is complete, however, for the purposes of impact analysis, the effect is considered permanent.

\*\* The location of the transmission lines have not been finalized. Transmission structures will be constructed to have the least impact to the surrounding habitats.



Sources: CCO Conveyance, CA WaterFix 2015; Species Occurrences, ICF 2013; Modeled Habitat, ICF 2013, ICF 2015; NAIP 2014



**Impacts to Valley Elderberry Longhorn Beetle Modeled Habitat from Water Conveyance Facility Construction  
Modified Pipeline Tunnel/Clifton Court Forebay Option  
Tunnel Work Area**

**Figure 6.10-18 of 6.10-26**

T:\WGI-38\GIS\_33\_00\GISRequest\_11\F\Deliverable\_10\EN\EN126\_15\EN\EN126\_15\_SpeciesDistribution\_2pane\_201509.mxd 20151111 [c:\isb] [Doc No: GIS-00204]

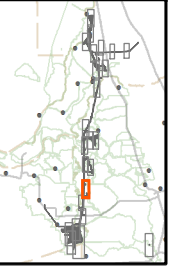


- City
  - State and Interstate Highways
  - Major roads
  - Delta Island
- |   |   |   |
|---|---|---|
| <p><b>Valley Elderberry Longhorn Beetle</b></p> <ul style="list-style-type: none"> <li><span style="display: inline-block; width: 15px; height: 10px; background-color: yellow; border: 1px solid black;"></span> Impacted Modeled Nonriparian Habitat</li> <li><span style="display: inline-block; width: 15px; height: 10px; background-color: red; border: 1px solid black;"></span> Impacted Modeled Riparian Habitat</li> <li><span style="display: inline-block; width: 15px; height: 10px; background-color: orange; border: 1px solid black;"></span> Modeled Nonriparian Habitat</li> <li><span style="display: inline-block; width: 15px; height: 10px; background-color: blue; border: 1px solid black;"></span> Modeled Riparian Habitat</li> </ul> | <ul style="list-style-type: none"> <li><span style="display: inline-block; width: 15px; height: 10px; background-color: lightgreen; border: 1px solid black;"></span> Permanent Transmission Lines</li> <li><span style="display: inline-block; width: 15px; height: 10px; background-color: darkgreen; border: 1px solid black;"></span> Temporary Transmission Lines</li> </ul> | <ul style="list-style-type: none"> <li><span style="display: inline-block; border: 1px dashed black; width: 15px; height: 10px;"></span> Conveyance Construction Footprint</li> </ul> |
|---|---|---|



\*\* Temporary work areas may be restored after construction is complete, however, for the purposes of impact analysis, the effect is considered permanent.

\*\* The location of the transmission lines have not been finalized. Transmission structures will be constructed to have the least impact to the surrounding habitats.

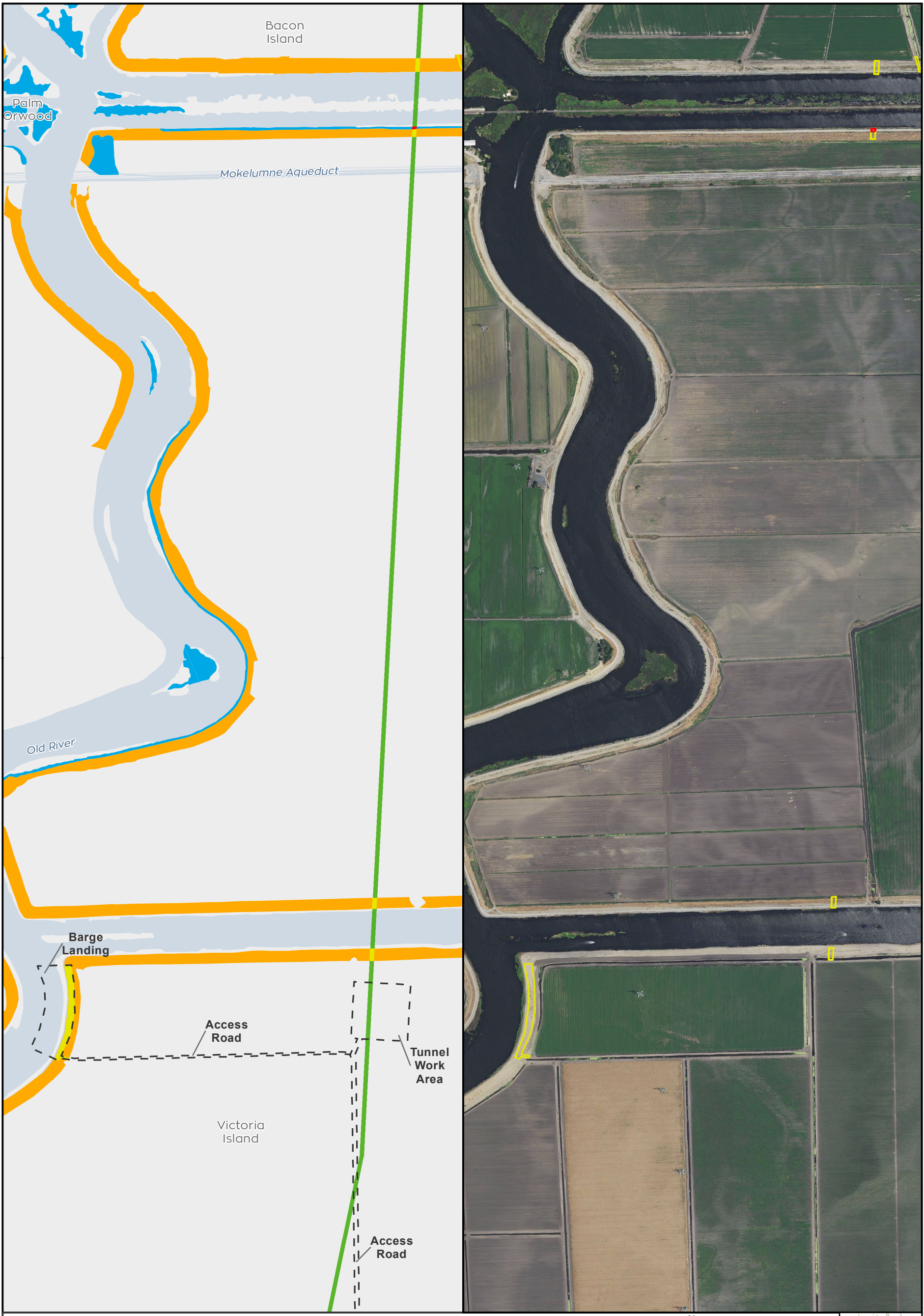


Sources: CCO Conveyance, CA WaterFix 2015; Species Occurrences, ICF 2013; Modeled Habitat, ICF 2013, ICF 2015; NAIP 2014



**Impacts to Valley Elderberry Longhorn Beetle Modeled Habitat from Water Conveyance Facility Construction  
Modified Pipeline Tunnel/Clifton Court Forebay Option  
Shaft & Tunnel Work Area  
Figure 6.10-19 of 6.10-26**

T:\WGI-38\GIS\_33\_00\GISRequest\_11\F\Deliverable\_11\F\ENNV126\_15\ENNV126\_15\_SpeciesDistribution\_2pane\_201509.mxd 20151111 [c:\isb] [Doc No: GIS-00204]



● City	<b>Valley Elderberry Longhorn Beetle</b>	┌─┐ Conveyance Construction Footprint
— State and Interstate Highways	■ Impacted Modeled Nonriparian Habitat	■ Permanent Transmission Lines
— Major roads	■ Impacted Modeled Riparian Habitat	■ Temporary Transmission Lines
■ Delta Island	■ Modeled Nonriparian Habitat	
	■ Modeled Riparian Habitat	

N 0 1,100 Feet  
 \*\* Temporary work areas may be restored after construction is complete, however, for the purposes of impact analysis, the effect is considered permanent.  
 \*\* The location of the transmission lines have not been finalized. Transmission structures will be constructed to have the least impact to the surrounding habitats.

Sources: CCO Conveyance, CA WaterFix 2015; Species Occurrences, ICF 2013; Modeled Habitat, ICF 2013, ICF 2015; NAIP 2014



**Impacts to Valley Elderberry Longhorn Beetle Modeled Habitat from Water Conveyance Facility Construction Modified Pipeline Tunnel/Clifton Court Forebay Option Tunnel Work Area & Transmission Line**  
**Figure 6.10-20 of 6.10-26**

T:\WGI-38\GIS\_33\_00\GISRequest\_11\F\Deliverable\_11\F\EN\126\_15\EN\126\_15\_SpeciesDistribution\_2pane\_201509.mxd 20151111 [cib] [Doc No: GIS-00204]

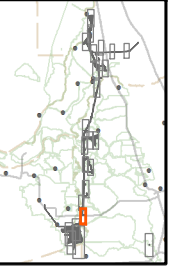


- |                                 |  |                                       |
|---------------------------------|--|---------------------------------------|
| ● City                          | <b>Valley Elderberry Longhorn Beetle</b> | ┌─┐ Conveyance Construction Footprint |
| — State and Interstate Highways | ■ Impacted Modeled Nonriparian Habitat   | ■ Permanent Transmission Lines        |
| — Major roads                   | ■ Impacted Modeled Riparian Habitat      | ■ Temporary Transmission Lines        |
| ■ Delta Island                  | ■ Modeled Nonriparian Habitat            |                                       |
|                                 | ■ Modeled Riparian Habitat               |                                       |



\*\* Temporary work areas may be restored after construction is complete, however, for the purposes of impact analysis, the effect is considered permanent.

\*\* The location of the transmission lines have not been finalized. Transmission structures will be constructed to have the least impact to the surrounding habitats.



Sources: CCO Conveyance, CA WaterFix 2015; Species Occurrences, ICF 2013; Modeled Habitat, ICF 2013, ICF 2015; NAIP 2014



**Impacts to Valley Elderberry Longhorn Beetle Modeled Habitat from Water Conveyance Facility Construction Modified Pipeline Tunnel/Clifton Court Forebay Option Tunnel Work Area & Transmission Line**  
**Figure 6.10-21 of 6.10-26**

T:\WGI-38\GIS\_33\_00\GISRequest\_11\F\Deliverable\_10\EN\126\_15\EN\126\_15\_SpeciesDistribution\_2pane\_201509.mxd 20151111 [ciss] [Doc No: GIS-00204]

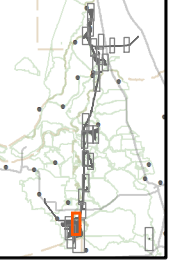


- City
- State and Interstate Highways
- Major roads
- Delta Island
- Valley Elderberry Longhorn Beetle**
- Impacted Modeled Nonriparian Habitat
- Impacted Modeled Riparian Habitat
- Modeled Nonriparian Habitat
- Modeled Riparian Habitat
- Conveyance Construction Footprint
- Permanent Transmission Lines
- Temporary Transmission Lines

N 0 1,500 Feet

\*\* Temporary work areas may be restored after construction is complete, however, for the purposes of impact analysis, the effect is considered permanent.

\*\* The location of the transmission lines have not been finalized. Transmission structures will be constructed to have the least impact to the surrounding habitats.



Sources: CCO Conveyance, CA WaterFix 2015; Species Occurrences, ICF 2013; Modeled Habitat, ICF 2013, ICF 2015; NAIP 2014



**Impacts to Valley Elderberry Longhorn Beetle Modeled Habitat from Water Conveyance Facility Construction  
Modified Pipeline Tunnel/Clifton Court Forebay Option  
Clifton Court Forebay  
Figure 6.10-22 of 6.10-26**

T:\WGI-38\GIS\_33\_00\GISRequest\_11\F\Deliverable\_10\F\ENV\126\_15\ENV\126\_15\_SpeciesDistribution\_2pane\_201509.mxd 20151111 [c:\isb] [Doc No: GIS-00204]



● City	<b>Valley Elderberry Longhorn Beetle</b>	▭ Conveyance Construction Footprint
— State and Interstate Highways	▭ Impacted Modeled Nonriparian Habitat	▭ Permanent Transmission Lines
— Major roads	▭ Impacted Modeled Riparian Habitat	▭ Temporary Transmission Lines
▭ Delta Island	▭ Modeled Nonriparian Habitat	
	▭ Modeled Riparian Habitat	

N  
 0 2,250 Feet  
 \*\* Temporary work areas may be restored after construction is complete, however, for the purposes of impact analysis, the effect is considered permanent.  
 \*\* The location of the transmission lines have not been finalized. Transmission structures will be constructed to have the least impact to the surrounding habitats.

Sources: CCO Conveyance, CA WaterFix 2015; Species Occurrences, ICF 2013; Modeled Habitat, ICF 2013, ICF 2015; NAIP 2014



**Impacts to Valley Elderberry Longhorn Beetle Modeled Habitat from Water Conveyance Facility Construction Modified Pipeline Tunnel/Clifton Court Forebay Option New Forebay**

T:\WGI-38\GIS\_33\_00\GISRequest\_11\F\Deliverable\_10\EN\126\_15\EN\126\_15\_SpeciesDistribution\_2pane\_20151111 [c] [s] [Doc No: GIS-00204]

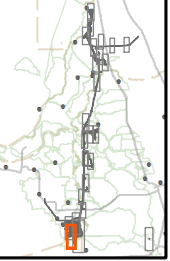


- City
  - State and Interstate Highways
  - Major roads
  - Delta Island
- Valley Elderberry Longhorn Beetle**
- Impacted Modeled Nonriparian Habitat
  - Impacted Modeled Riparian Habitat
  - Modeled Nonriparian Habitat
  - Modeled Riparian Habitat
- Conveyance Construction Footprint
  - Permanent Transmission Lines
  - Temporary Transmission Lines

N 0 1,600 Feet

\*\* Temporary work areas may be restored after construction is complete, however, for the purposes of impact analysis, the effect is considered permanent.

\*\* The location of the transmission lines have not been finalized. Transmission structures will be constructed to have the least impact to the surrounding habitats.



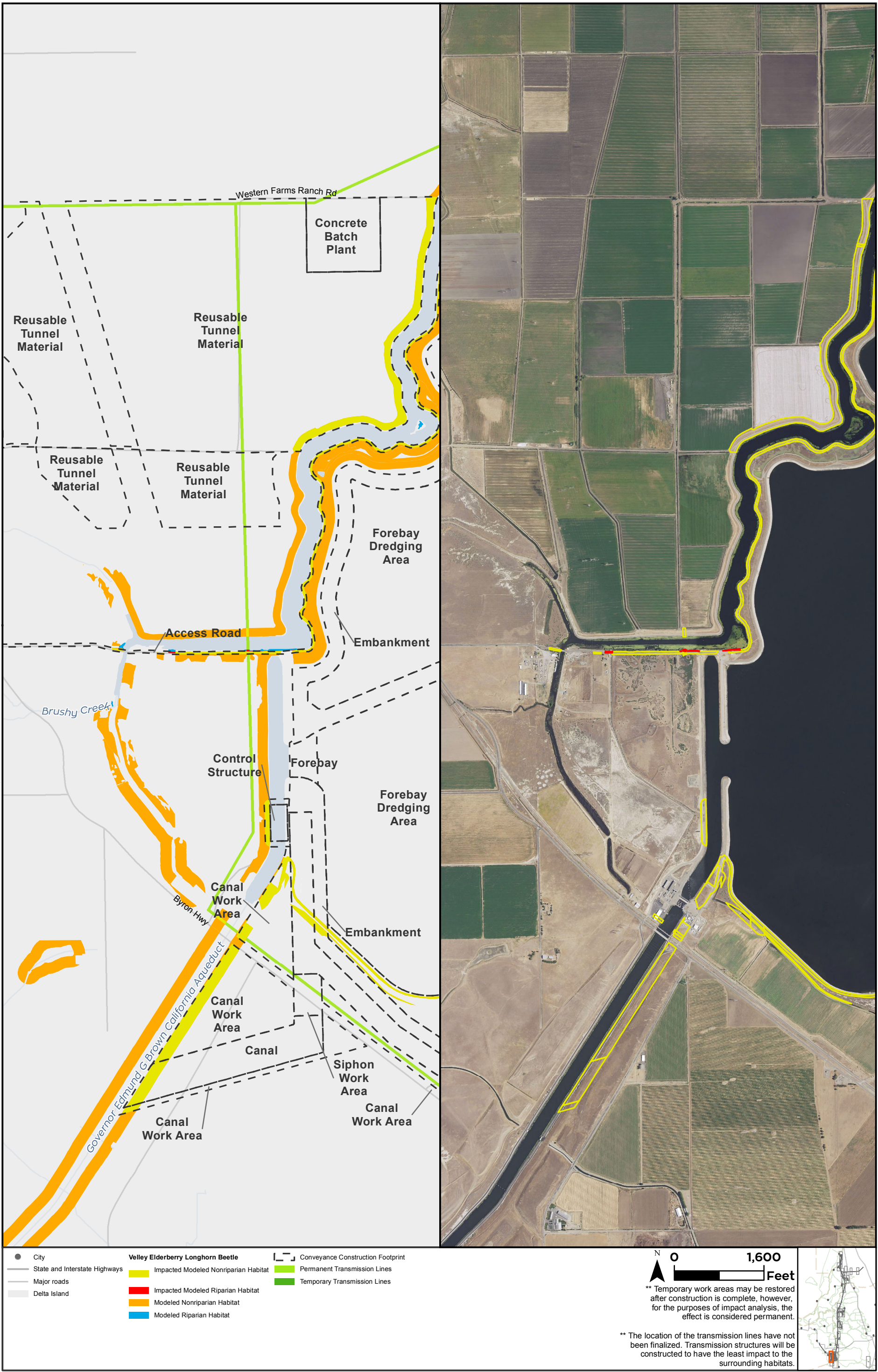
Sources: CCO Conveyance, CA WaterFix 2015; Species Occurrences, ICF 2013; Modeled Habitat, ICF 2013, ICF 2015; NAIP 2014



**Impacts to Valley Elderberry Longhorn Beetle Modeled Habitat from Water Conveyance Facility Construction  
Modified Pipeline Tunnel/Clifton Court Forebay Option  
Clifton Court Forebay  
Figure 6.10-24 of 6.10-26**



T:\WGI-38\GIS\_33\_00\GISRequest\_11\F\Deliverable\_10\F\ENV\126\_15\ENV\126\_15\_SpeciesDistribution\_2pane\_201509.mxd 20151111 [c:\isb] [Doc No: GIS-00204]

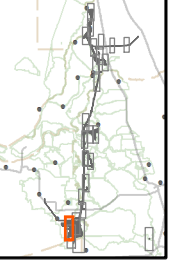


- City
- State and Interstate Highways
- Major roads
- Delta Island
- Valley Elderberry Longhorn Beetle**
- Impacted Modeled Nonriparian Habitat
- Impacted Modeled Riparian Habitat
- Modeled Nonriparian Habitat
- Modeled Riparian Habitat
- Conveyance Construction Footprint
- Permanent Transmission Lines
- Temporary Transmission Lines

N 0 1,600 Feet

\*\* Temporary work areas may be restored after construction is complete, however, for the purposes of impact analysis, the effect is considered permanent.

\*\* The location of the transmission lines have not been finalized. Transmission structures will be constructed to have the least impact to the surrounding habitats.

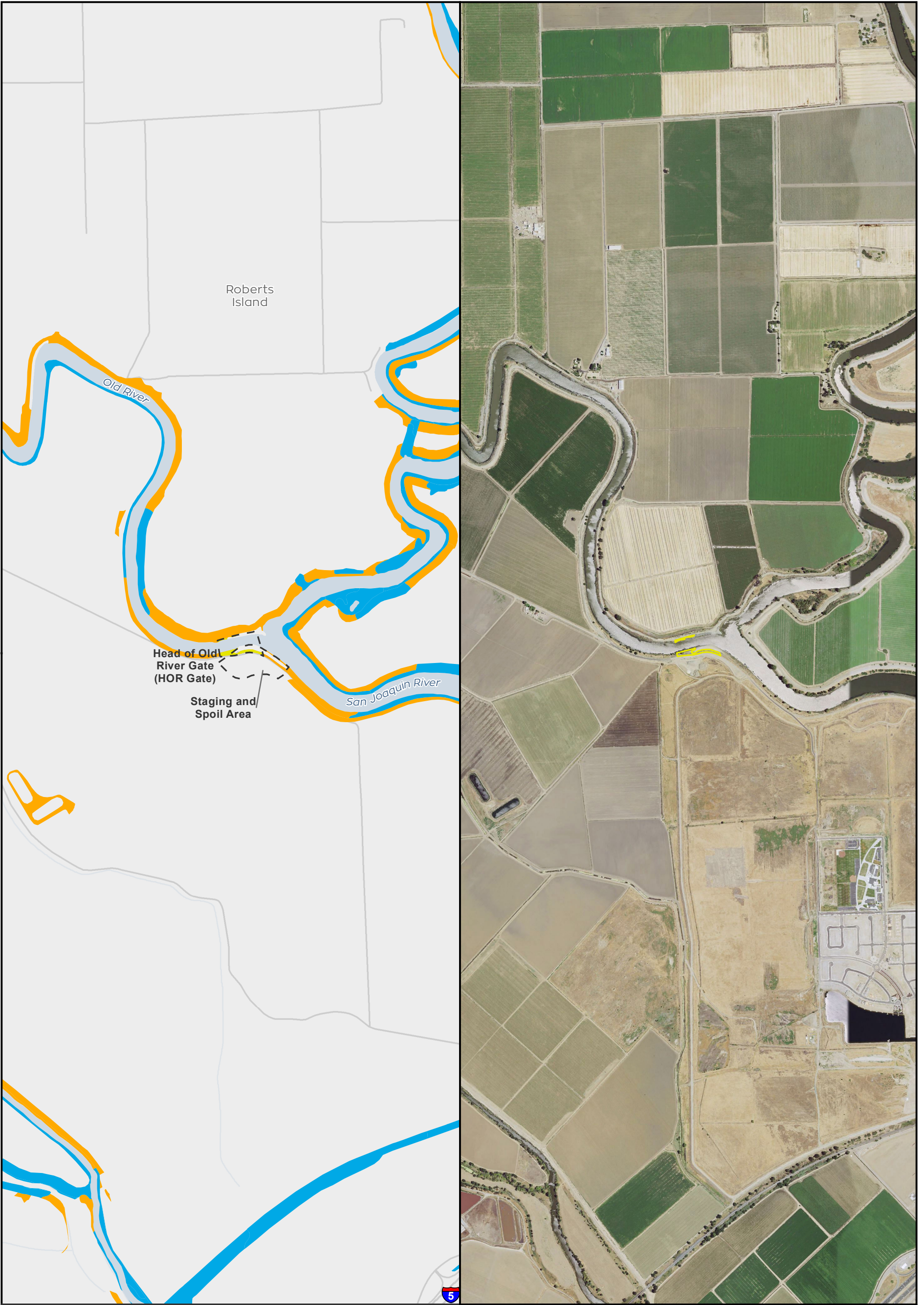


Sources: CCO Conveyance, CA WaterFix 2015; Species Occurrences, ICF 2013; Modeled Habitat, ICF 2013, ICF 2015; NAIP 2014



**Impacts to Valley Elderberry Longhorn Beetle Modeled Habitat from Water Conveyance Facility Construction  
Modified Pipeline Tunnel/Clifton Court Forebay Option  
Clifton Court Forebay  
Figure 6.10-25 of 6.10-26**

T:\W\GI-38\GIS\_33\_00\GISRequest\_11\F\Deliverable\_11\F\EN\126\_15\_15\EN\126\_15\_SpeciesDistribution\_2pane\_201512.mxd 20151222 [clsb] [Doc No: GIS-00204]



- City
- State and Interstate Highways
- Major roads
- Delta Island

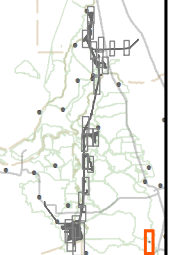
- Valley Elderberry Longhorn Beetle**
- Impacted Modeled Nonriparian Habitat
  - Impacted Modeled Riparian Habitat
  - Modeled Nonriparian Habitat
  - Modeled Riparian Habitat

- Conveyance Construction Footprint
- Permanent Transmission Lines
- Temporary Transmission Lines

0 1,600 Feet

\*\* Temporary work areas may be restored after construction is complete, however, for the purposes of impact analysis, the effect is considered permanent.

\*\* The location of the transmission lines have not been finalized. Transmission structures will be constructed to have the least impact to the surrounding habitats.



Sources: CCO Conveyance, CA WaterFix 2015; Species Occurrences, ICF 2013; Modeled Habitat, ICF 2013, ICF 2015; NAIP 2014



**Impacts to Valley Elderberry Longhorn Beetle Modeled Habitat from Water Conveyance Facility Construction  
Modified Pipeline Tunnel/Clifton Court Forebay Option  
Operable Barrier**