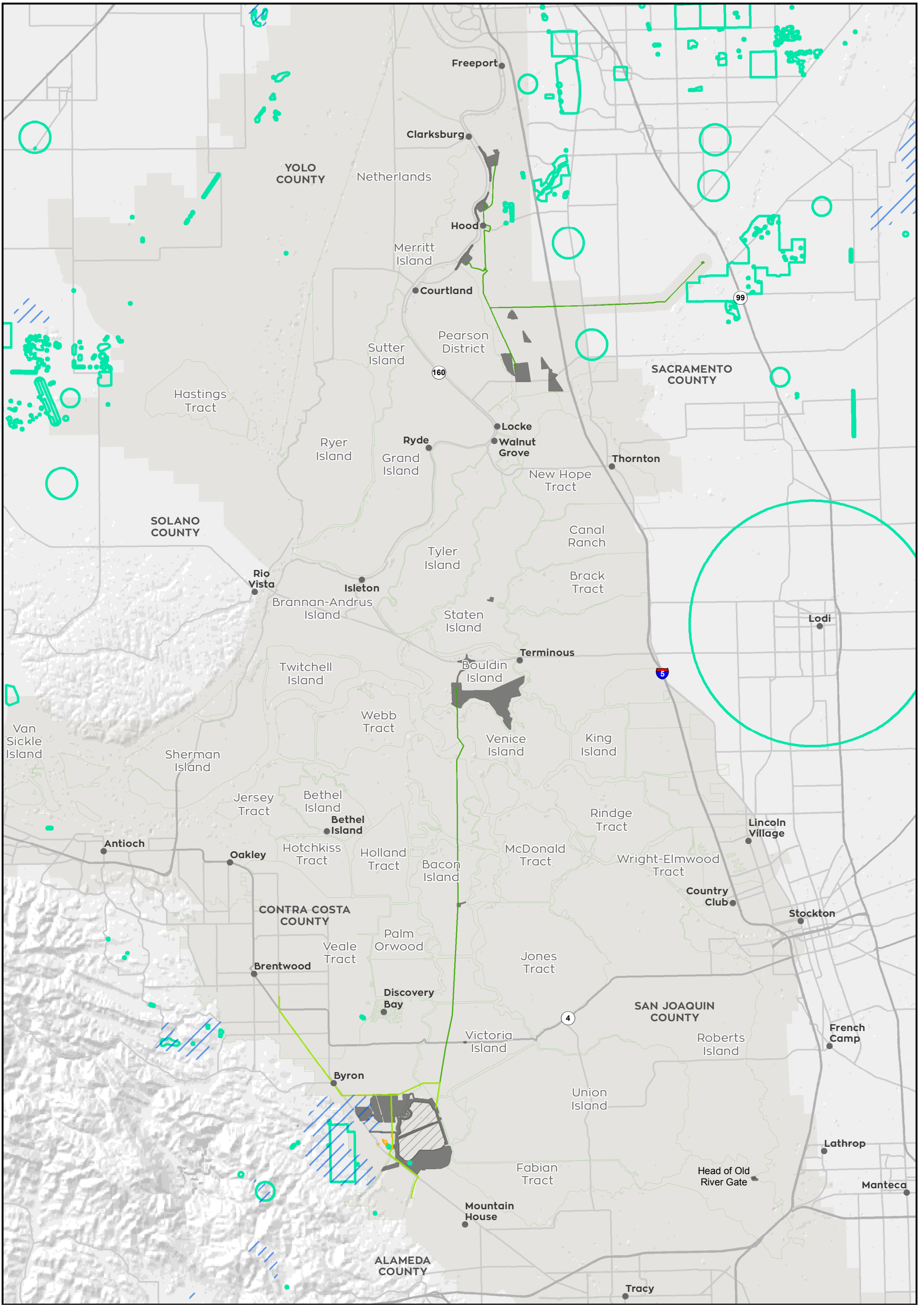


T:\WGI-38\GIS_33_00\GISRequest_11\F\Deliverable_10\EN\EN126_15_SpeciesDistribution.mxd 20151221 [cls] [Doc No: GIS-00204]



● City	Vernal Pool Crustacean	■ Construction Surface Impact
□ Delta Islands	▨ Critical Habitat	■ Permanent Transmission Lines
Action Area	■ Modeled Habitat	■ Temporary Transmission Lines
□ Legal Delta and Transmission Line Corridor	○ Species Occurrence	

N
 0 20,000 Feet

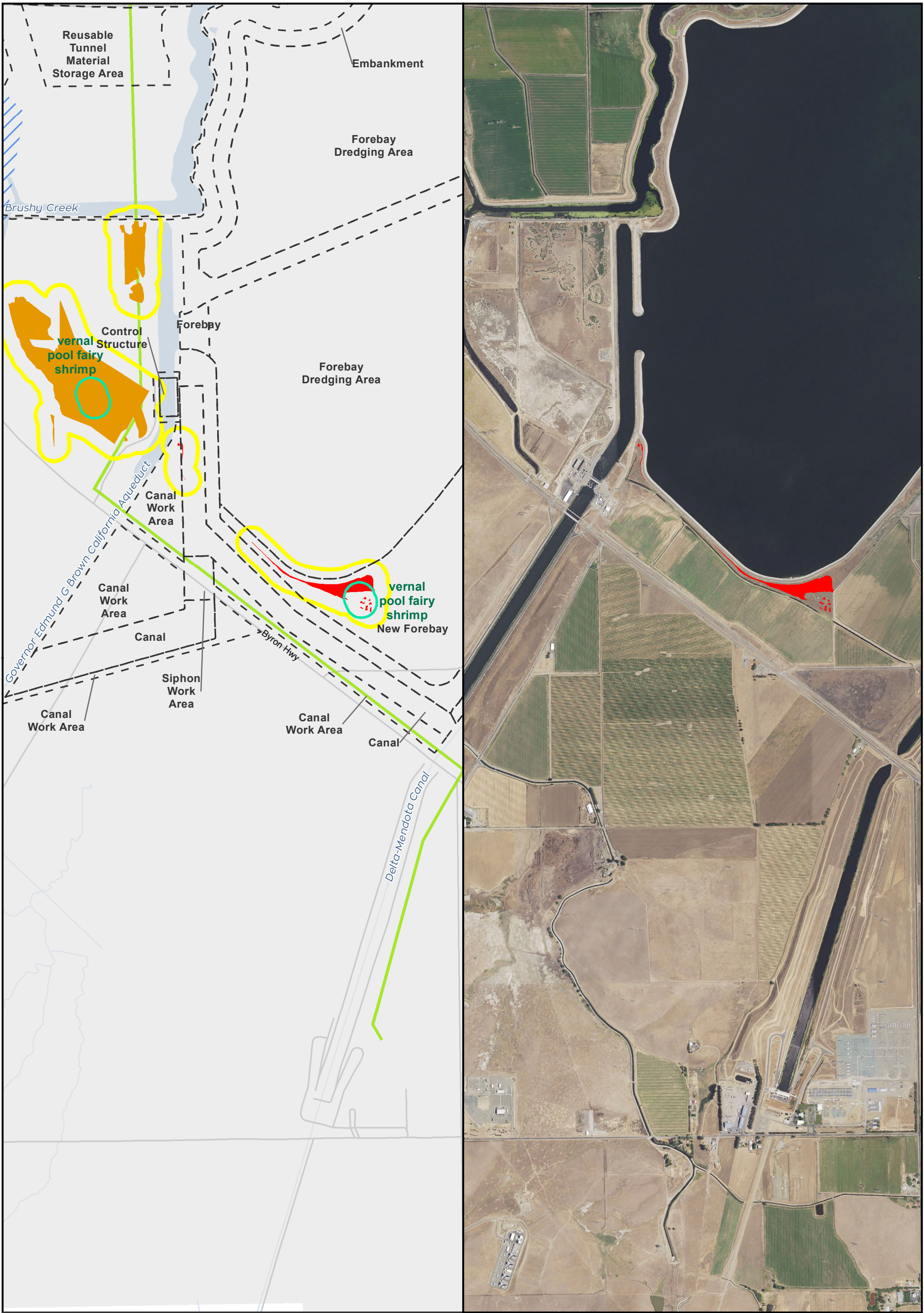
** Temporary work areas may be restored after construction is complete, however, for the purposes of impact analysis, the effect is considered permanent

Sources: CCO Conveyance, CA WaterFix 2015; Species Occurrences, ICF 2013; Modeled Habitat, ICF 2013, ICF 2015; Critical Habitat, USFWS 2012



**Impacts to Vernal Pool Crustacean Modeled Habitat from Water Conveyance Facility Construction
Modified Pipeline Tunnel/Clifton Court Forebay Option
Figure 6.11-1 of 6.11-3**

T:\WGI-38\GIS_33_00\GISRequest_11\F\Deliverable_10\F\ENV126_15\ENV126_15_SpeciesDistribution_2pane_201512.mxd 20151222 [clsb] [Doc No: GIS-00204]

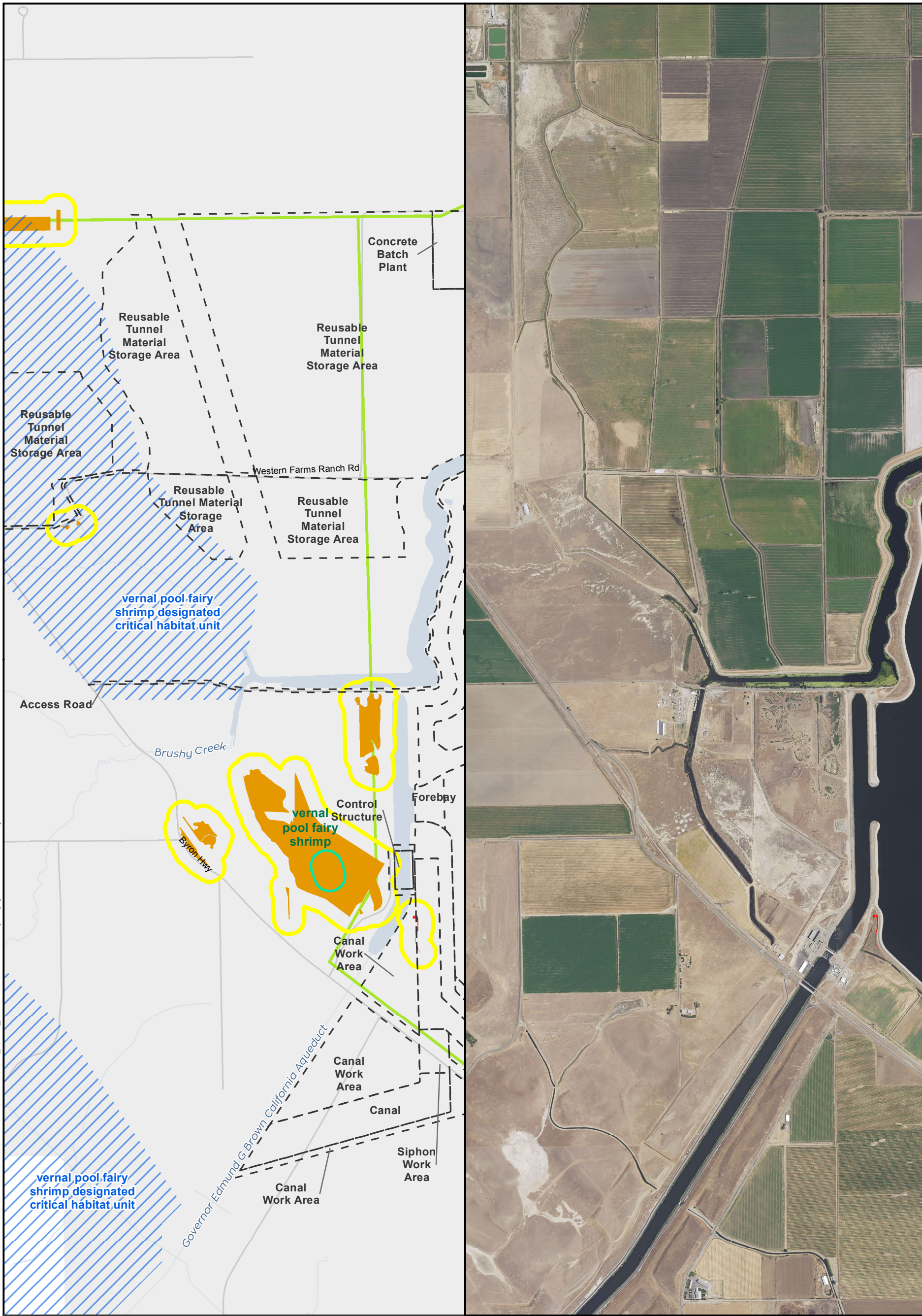


Sources: CCO Conveyance, CA WaterFix 2015; Species Occurrences, ICF 2013; Modeled Habitat, ICF 2013, ICF 2015; NAIP 2014



**Impacts to Vernal Pool Crustacean Modeled Habitat from Water Conveyance Facility Construction
Modified Pipeline Tunnel/Clifton Court Forebay Option
Clifton Court Forebay
Figure 6.11-2 of 6.11-3**

T:\WGI-38\GIS_33_00\GISRequest_11\F\Deliverable_11\F\ENVI126_15_SpeciesDistribution_2pane_20151222 [clsb] [Doc No: GIS-00204]



- City
- State and Interstate Highways
- Major roads
- Delta Island
- Vernal Pool Crustacean**
 - Vernal Pool Fairy Shrimp Designated Critical Habitat Unit
 - Impacted Modeled Habitat
 - Modeled Habitat
 - 250-foot buffer
 - Species Occurrence
- Conveyance Construction Footprint
- Permanent Transmission Lines
- Temporary Transmission Lines

0 1,600 Feet

** Temporary work areas may be restored after construction is complete, however, for the purposes of impact analysis, the effect is considered permanent.

** The location of the transmission lines have not been finalized. Transmission structures will be constructed to have the least impact to the surrounding habitats.



Sources: CCO Conveyance, CA WaterFix 2015; Species Occurrences, ICF 2013; Modeled Habitat, ICF 2013, ICF 2015; NAIP 2014



**Impacts to Vernal Pool Crustacean Modeled Habitat from Water Conveyance Facility Construction
Modified Pipeline Tunnel/Clifton Court Forebay Option
Clifton Court Forebay
Figure 6.11-3 of 6.11-3**