

Delta-Mendota Canal Recirculation Study



Final Report on Hydrologic Modeling Appendix E Figures of Exceedence Probability

Prepared for



**Bureau of Reclamation
Mid-Pacific Region**

By



May 2003

DELTA-MENDOTA CANAL RECIRCULATION STUDY

Appendix E for Final Report on Hydrologic Modeling

LIST OF FIGURES

- Figure E-1. Exceedence Probability of Tracy Pumping Plant Export
- Figure E-2. Exceedence Probability of Banks Pumping Plant Total Export
- Figure E-3. Exceedence Probability of Delta Outflow
- Figure E-4. Exceedence Probability of San Joaquin River Flow at Vernalis
- Figure E-5. Exceedence Probability of Newman Wasteway Flow
- Figure E-6. Exceedence Probability of Stanislaus River Flow below Goodwin Dam
- Figure E-7. Exceedence Probability of Tuolumne River Flow below New Don Pedro Reservoir
- Figure E-8. Exceedence Probability of Merced River Flow below Lake McClure

Table E-1. Exceedence Curves of Tracy Pumping Plant Export

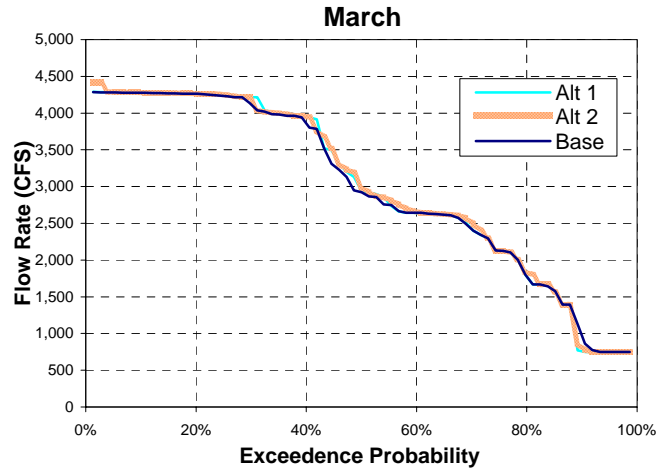
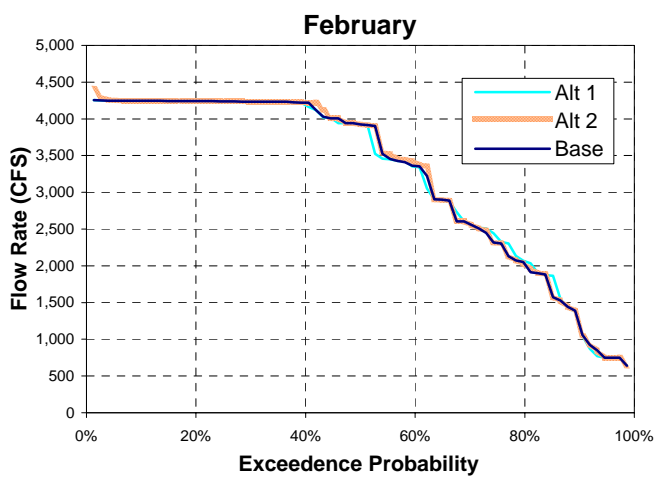
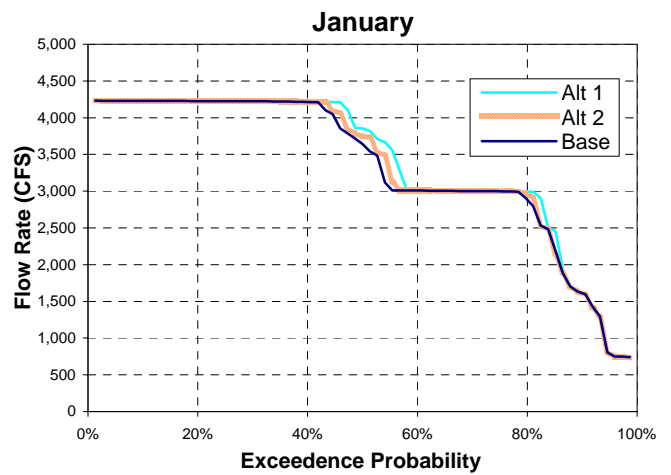
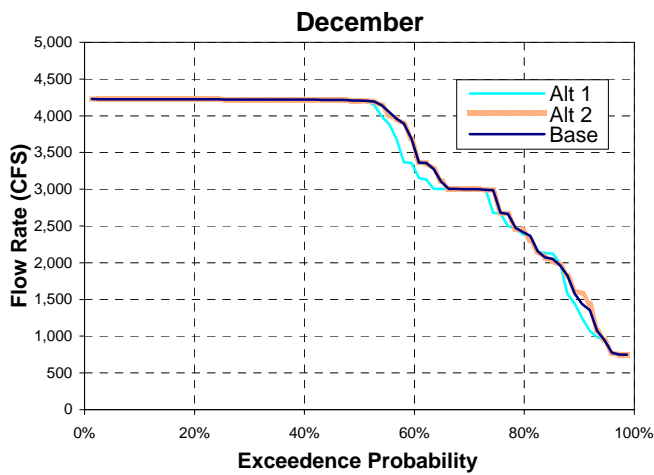
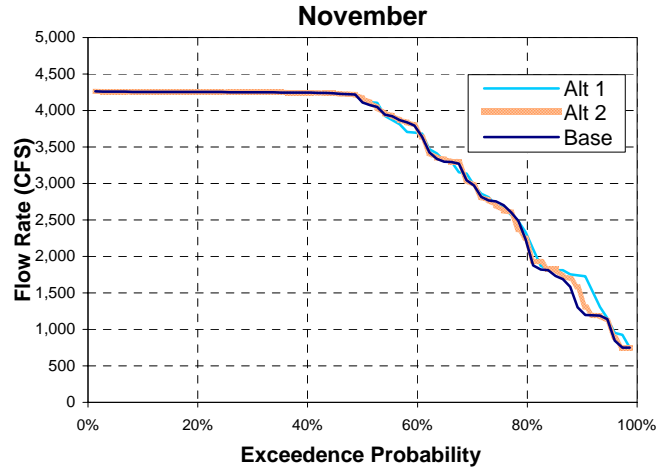
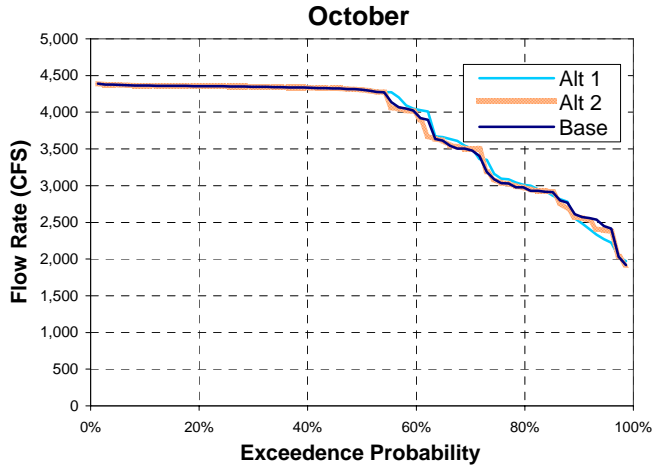
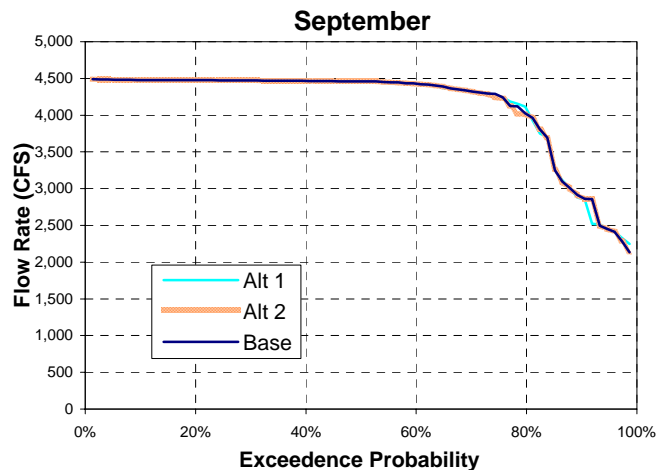
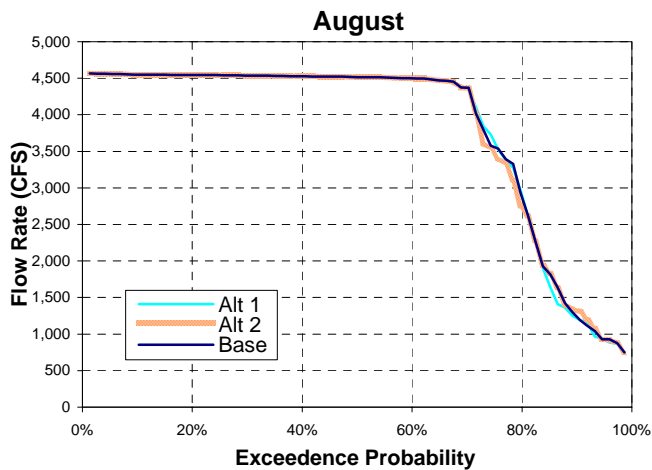
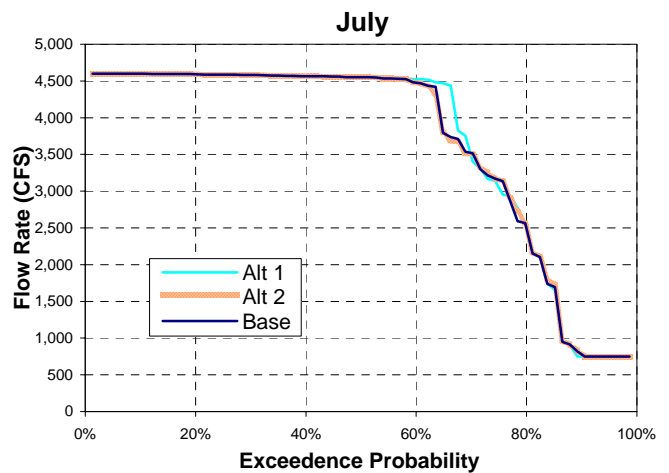
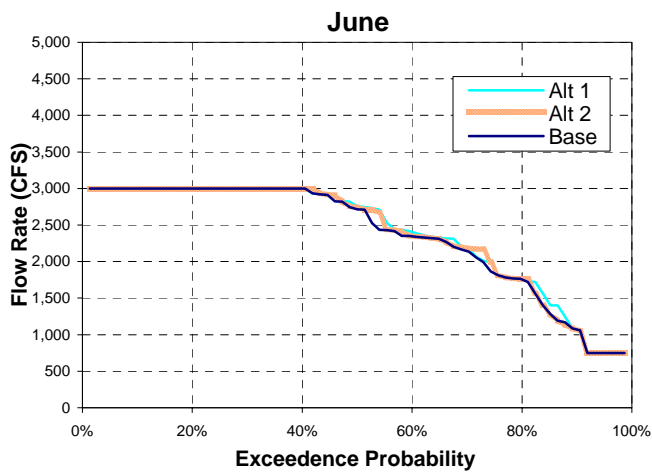
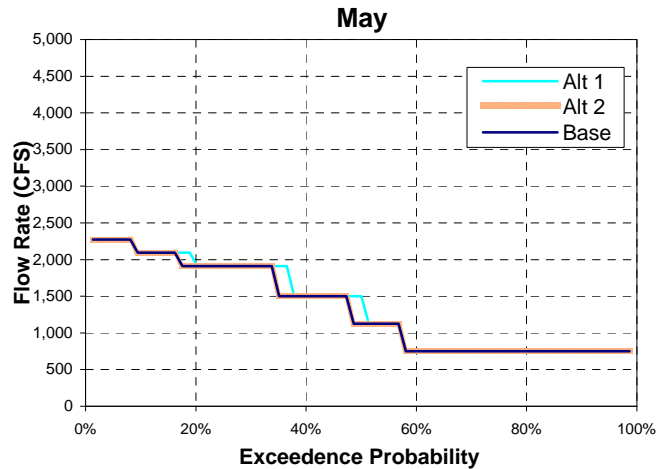
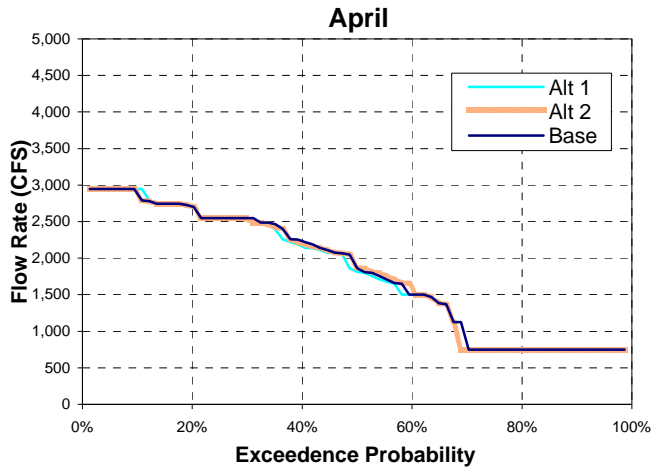


Table E-1. Exceedence Curves of Tracy Pumping Plant Export



Tabel E-2. Exceedence Curves of Banks Pumping Plant Total Export

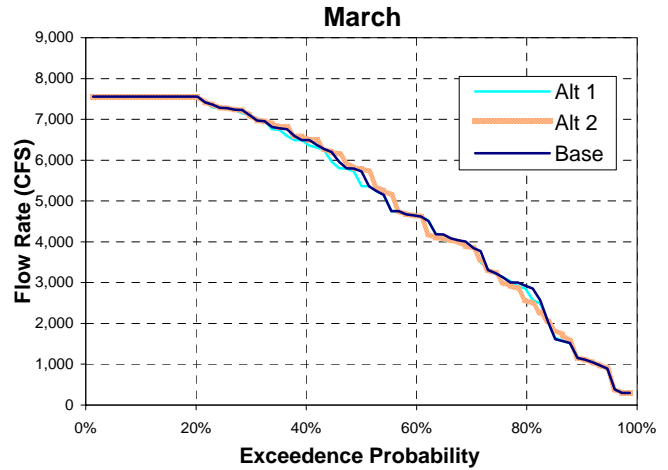
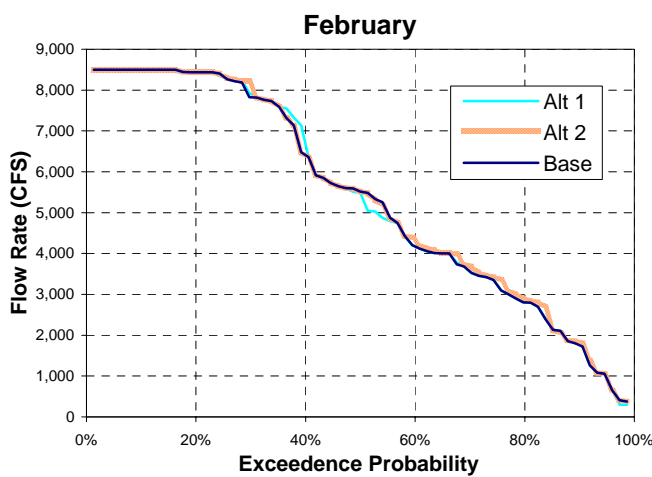
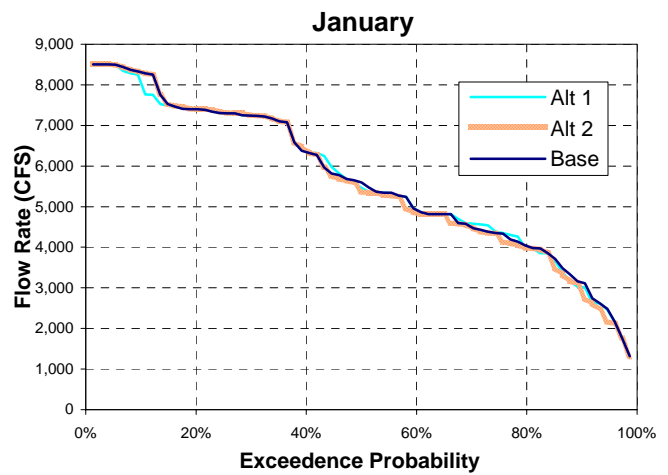
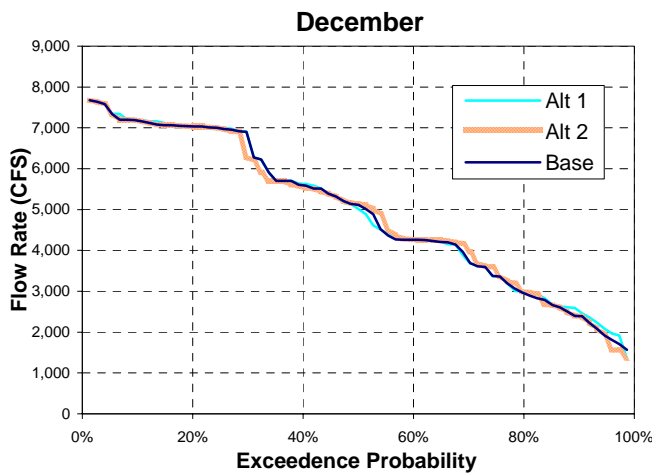
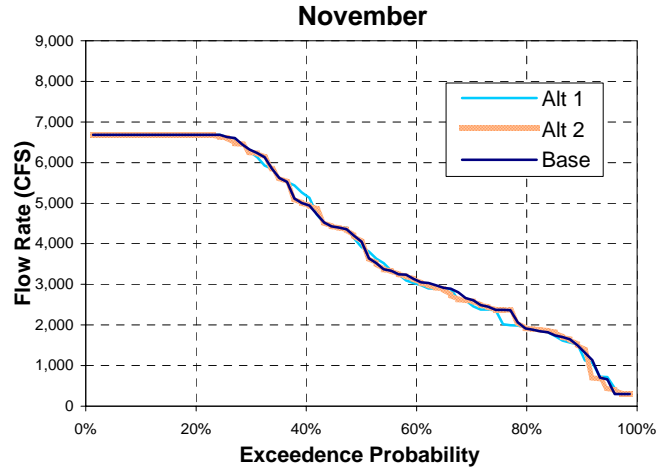
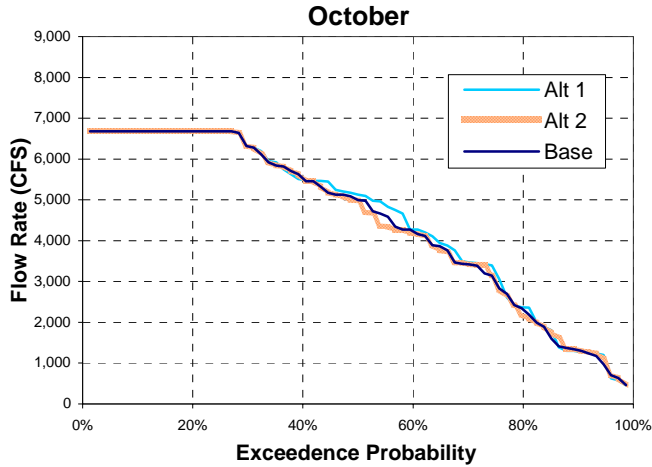


Table E-2. Exceedence Curves of Banks Pumping Plant Total Export

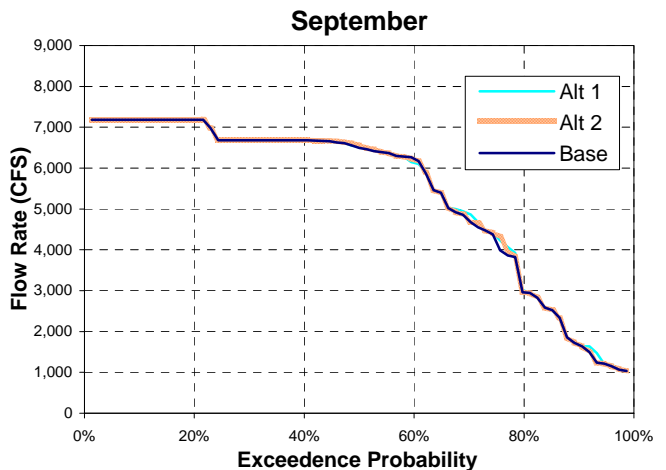
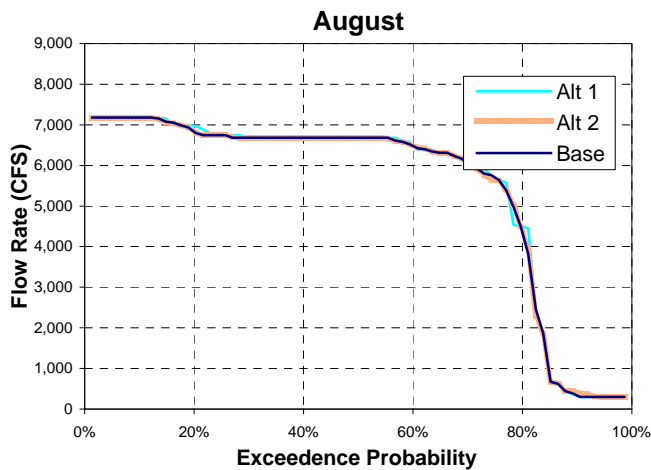
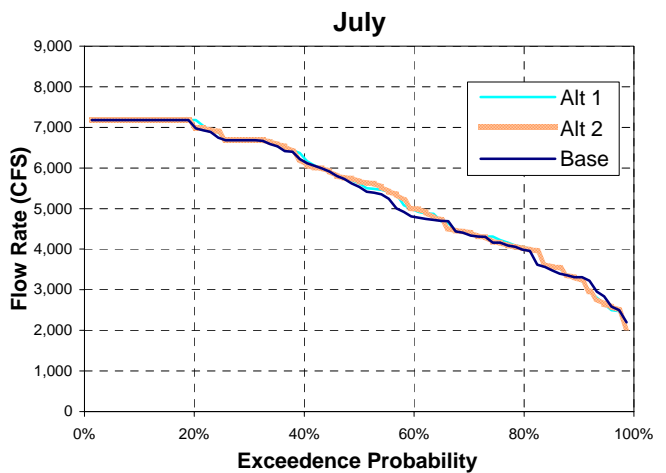
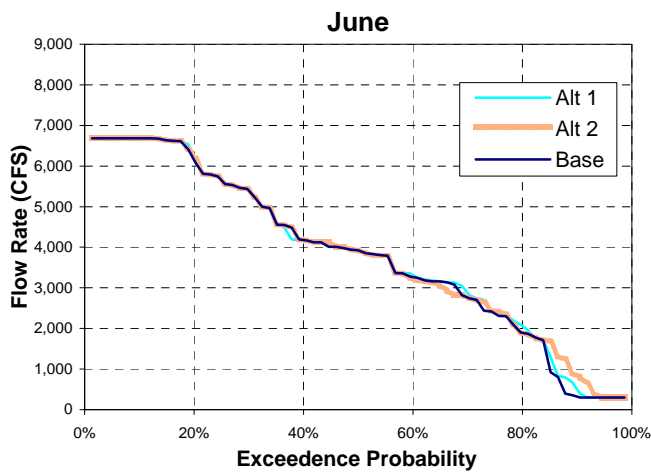
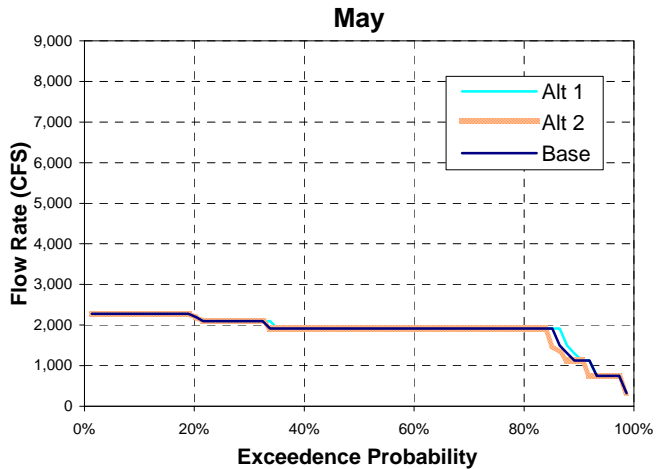
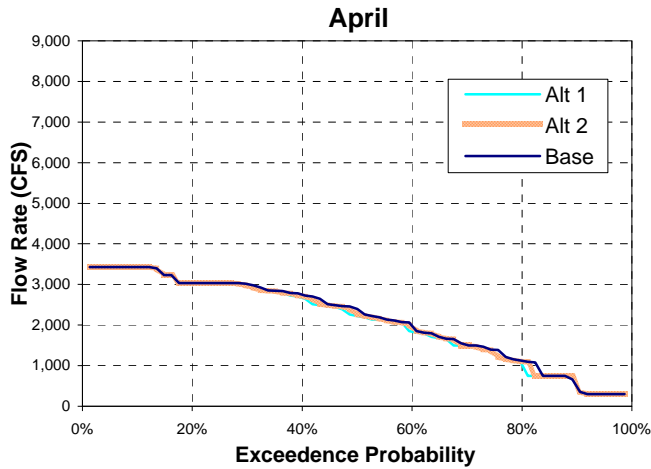


Table E-3. Exceedence Curves of Delta Outflow

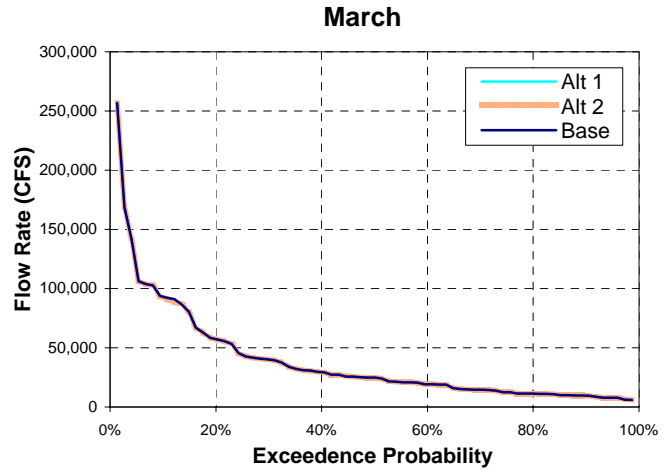
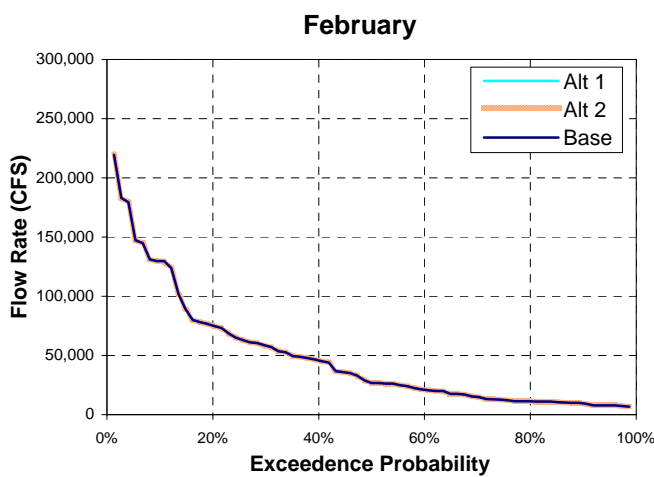
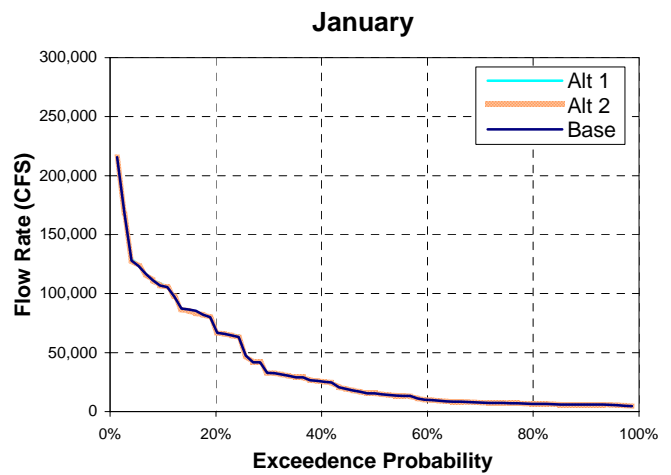
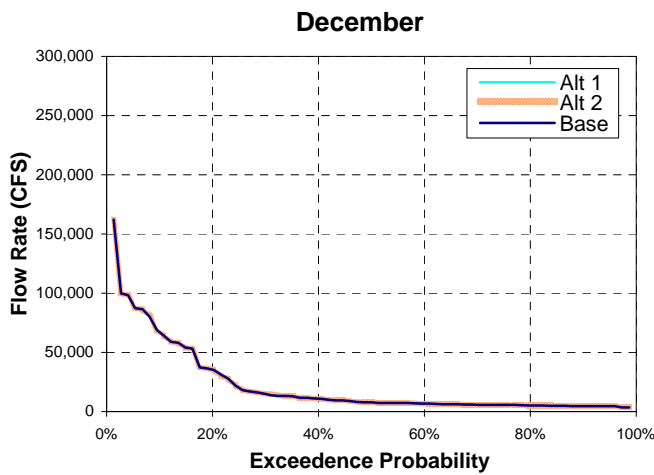
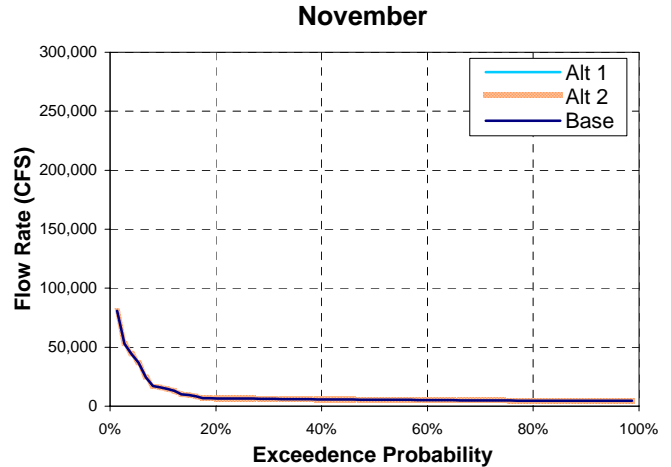
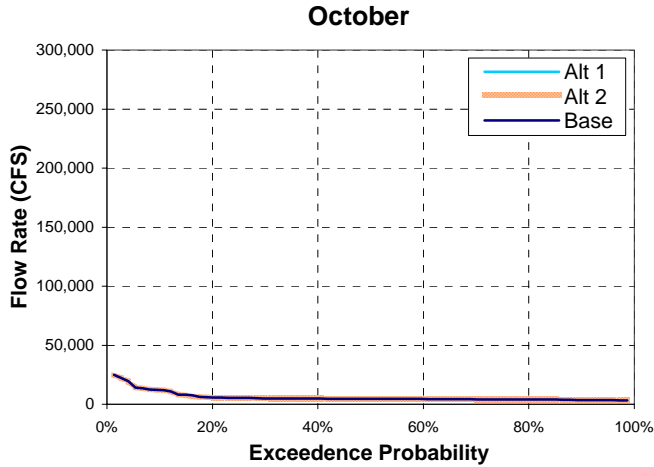


Table E-3. Exceedence Curves of Delta Outflow

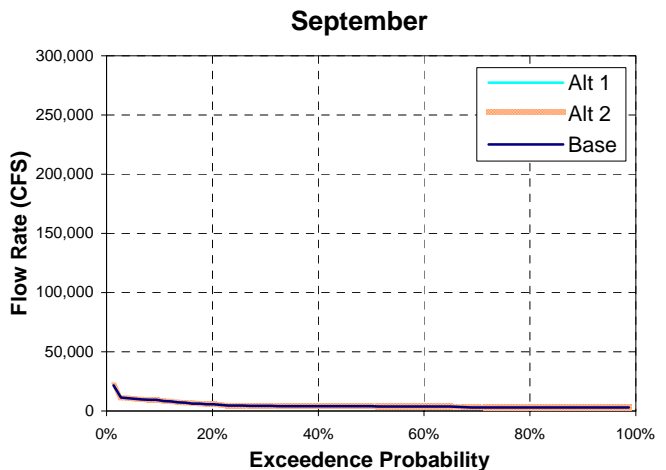
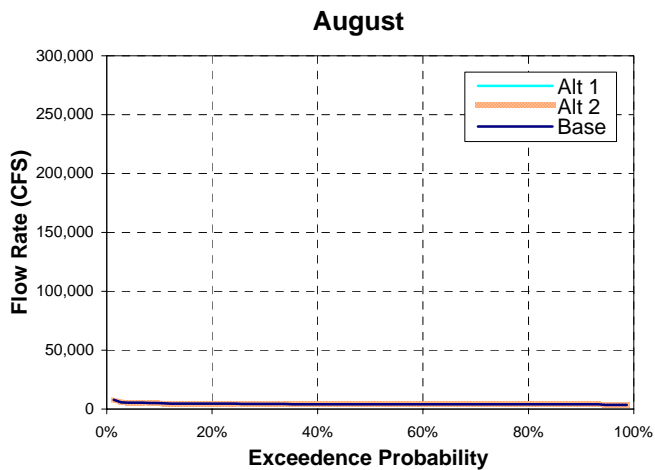
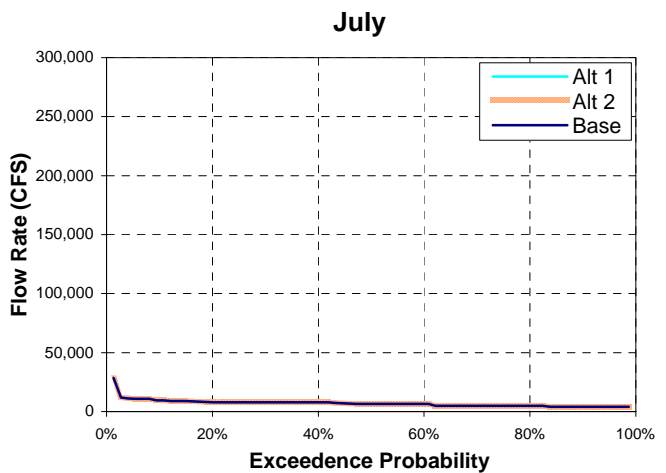
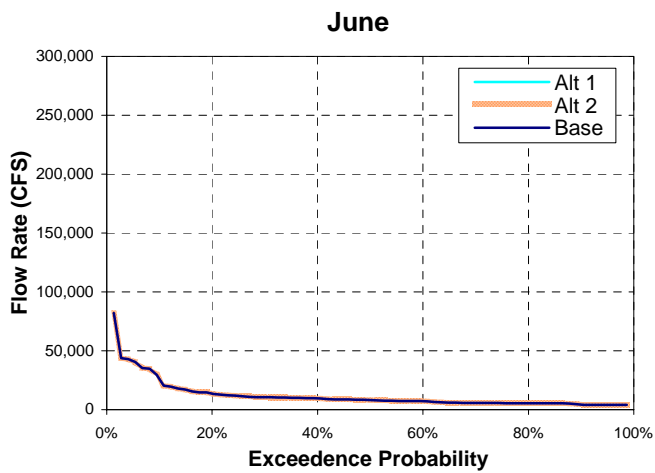
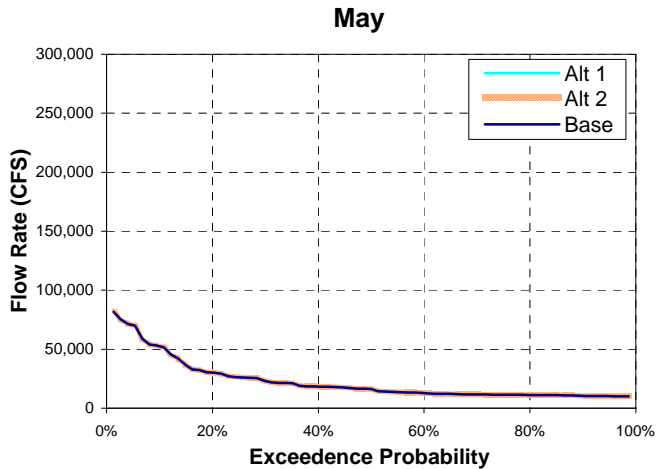
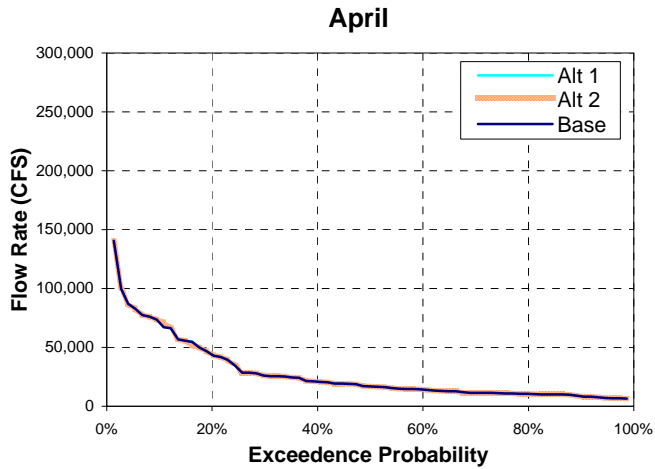


Figure E-4. Exceedence Curves of San Joaquin River Flow at Vernalis

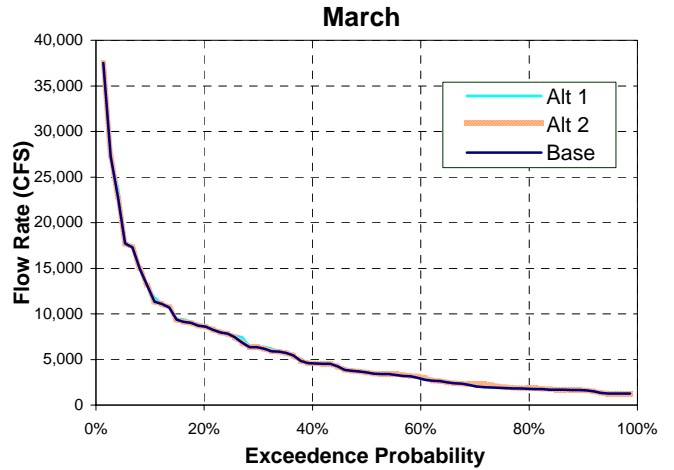
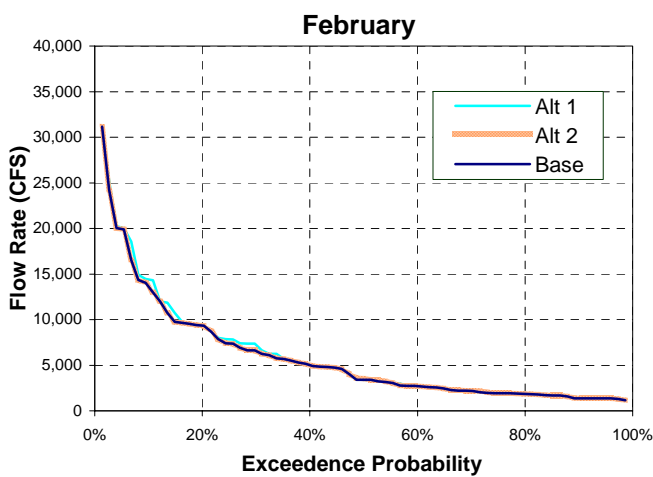
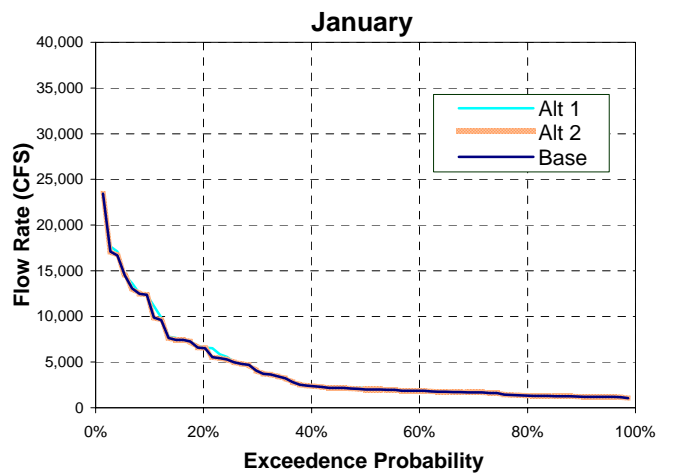
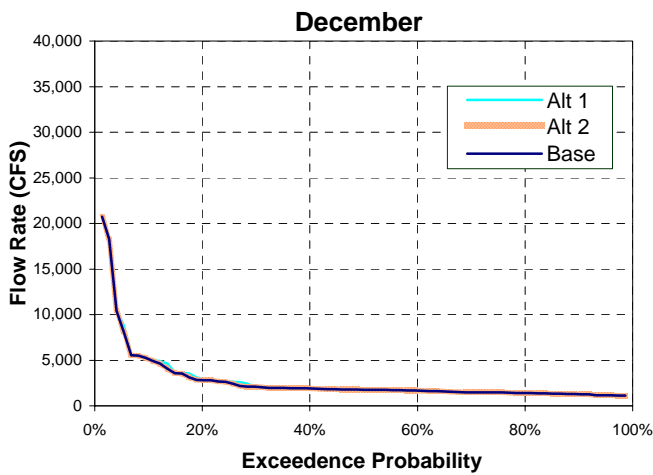
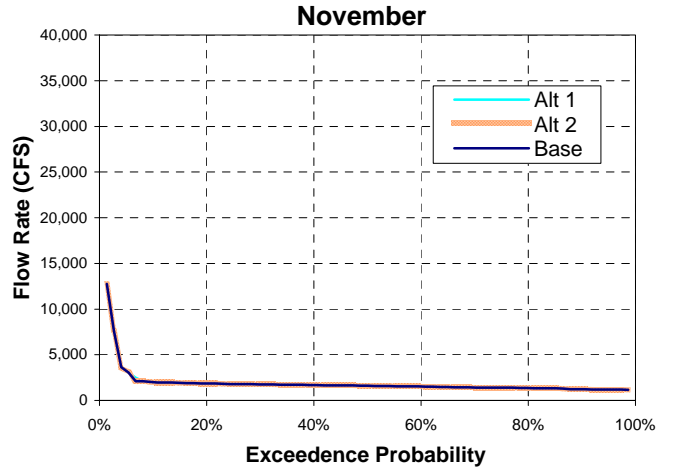
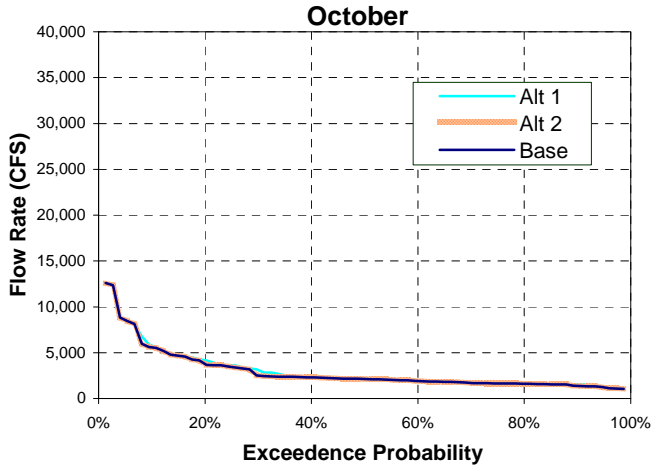


Figure E-4. Exceedence Curves of San Joaquin River Flow at Vernalis

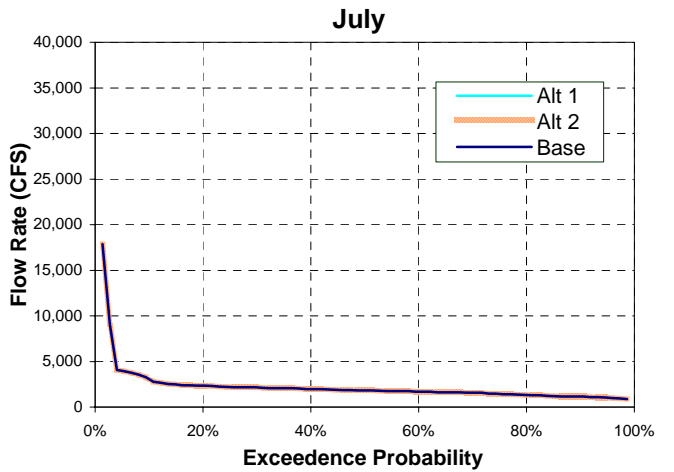
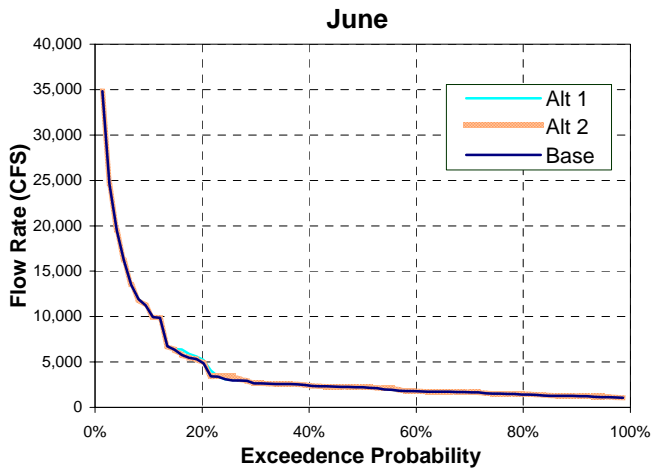
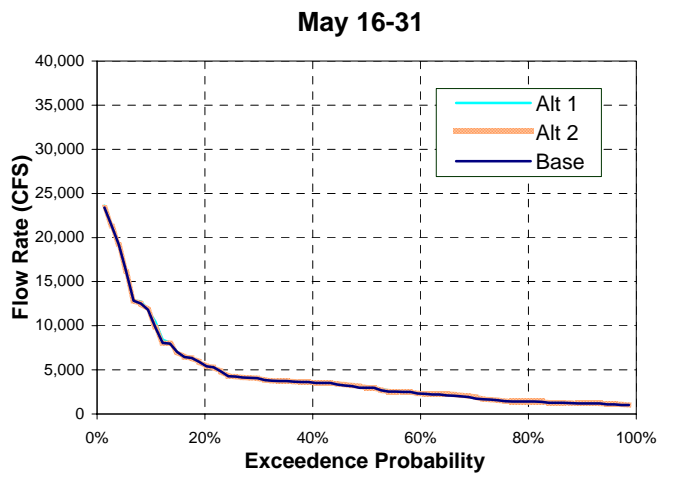
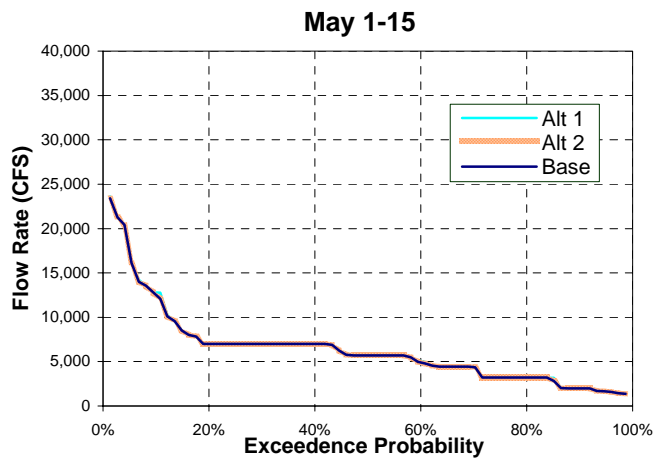
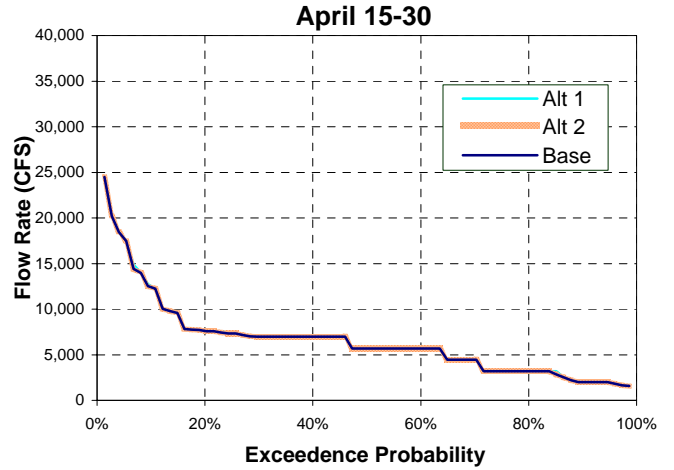
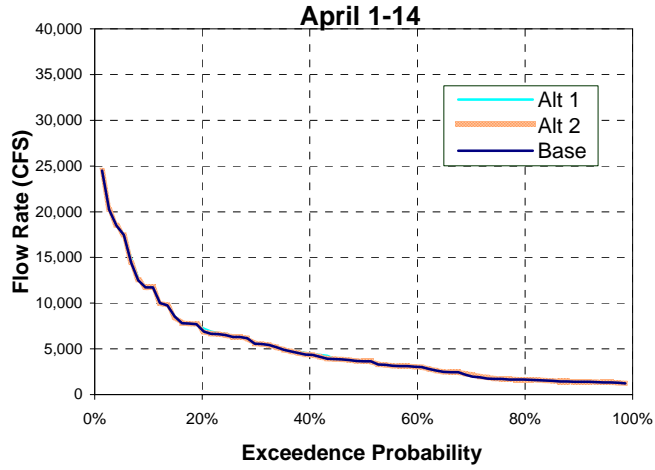


Figure E-4. Exceedence Curves of San Joaquin River Flow at Vernalis

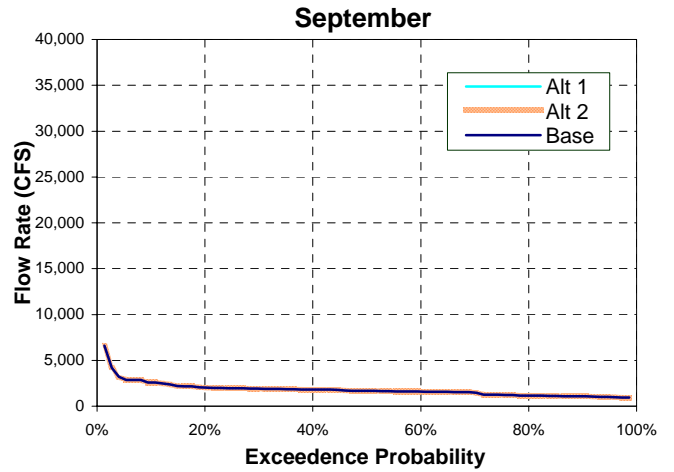
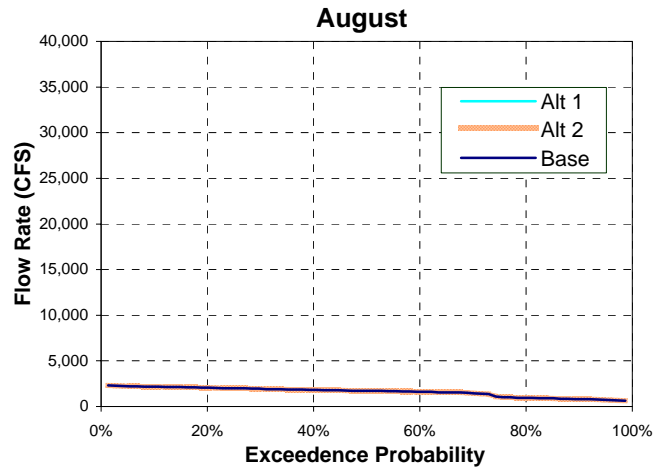


Figure E-5. Exceedence Curves of Newman Wasteway Flow

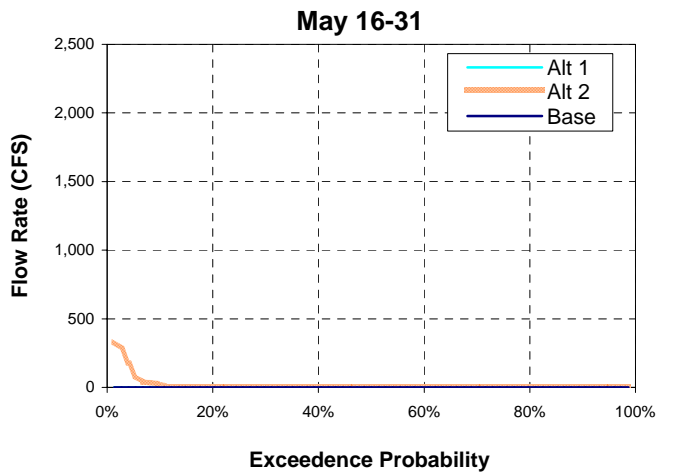
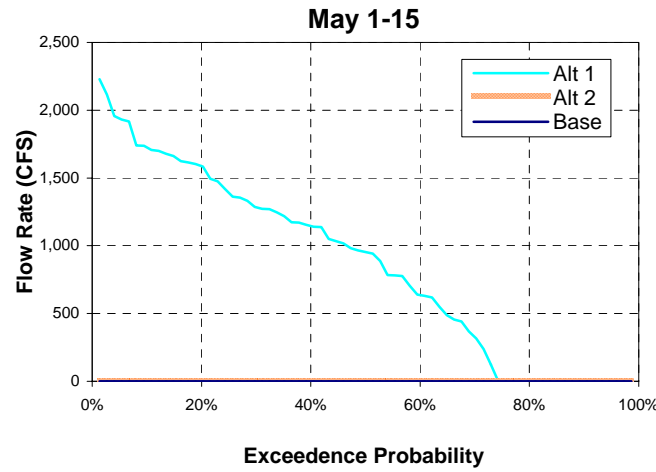
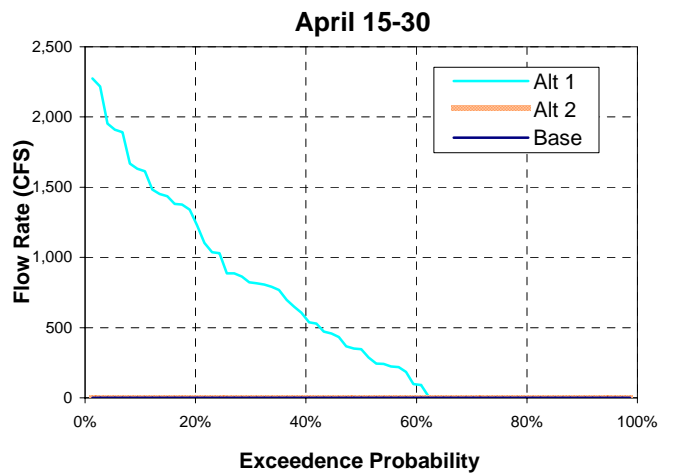
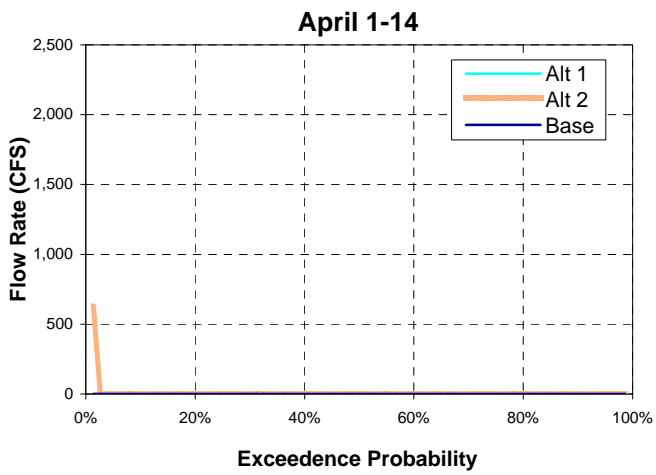
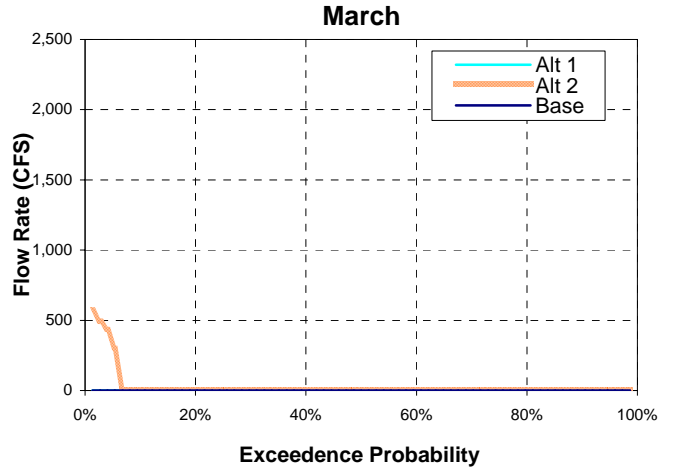
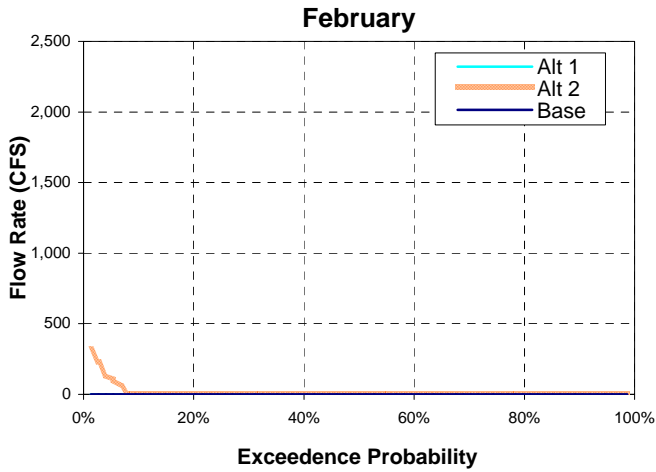


Figure E-5. Exceedence Curves of Newman Wasteway Flow

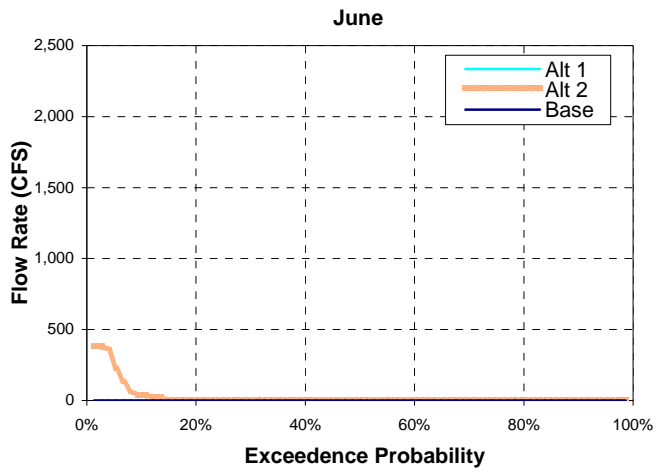


Figure E-6. Exceedence Curves of Stanislaus River Flow below Goodwin Dam

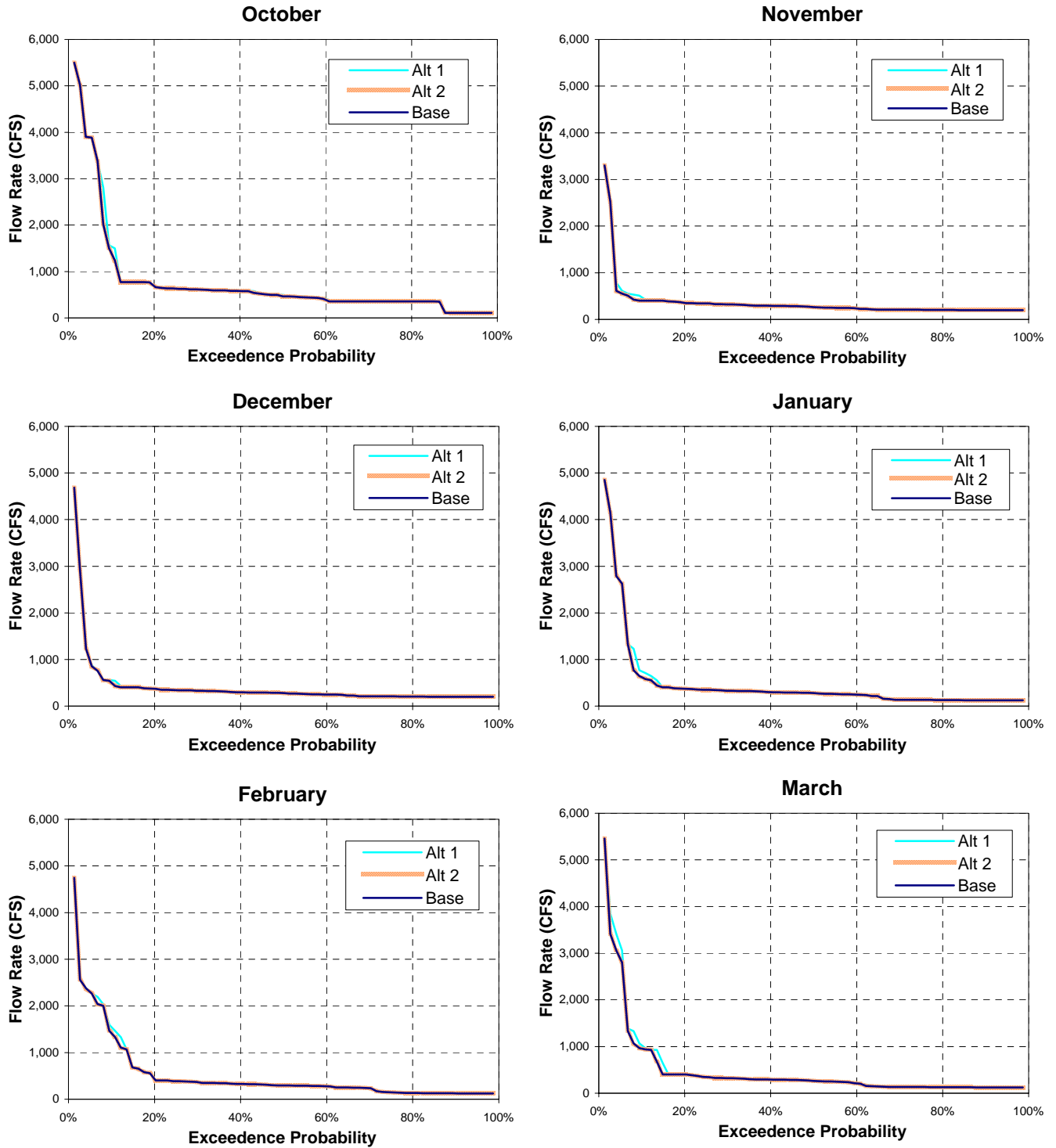


Figure E-6. Exceedence Curves of Stanislaus River Flow below Goodwin Dam

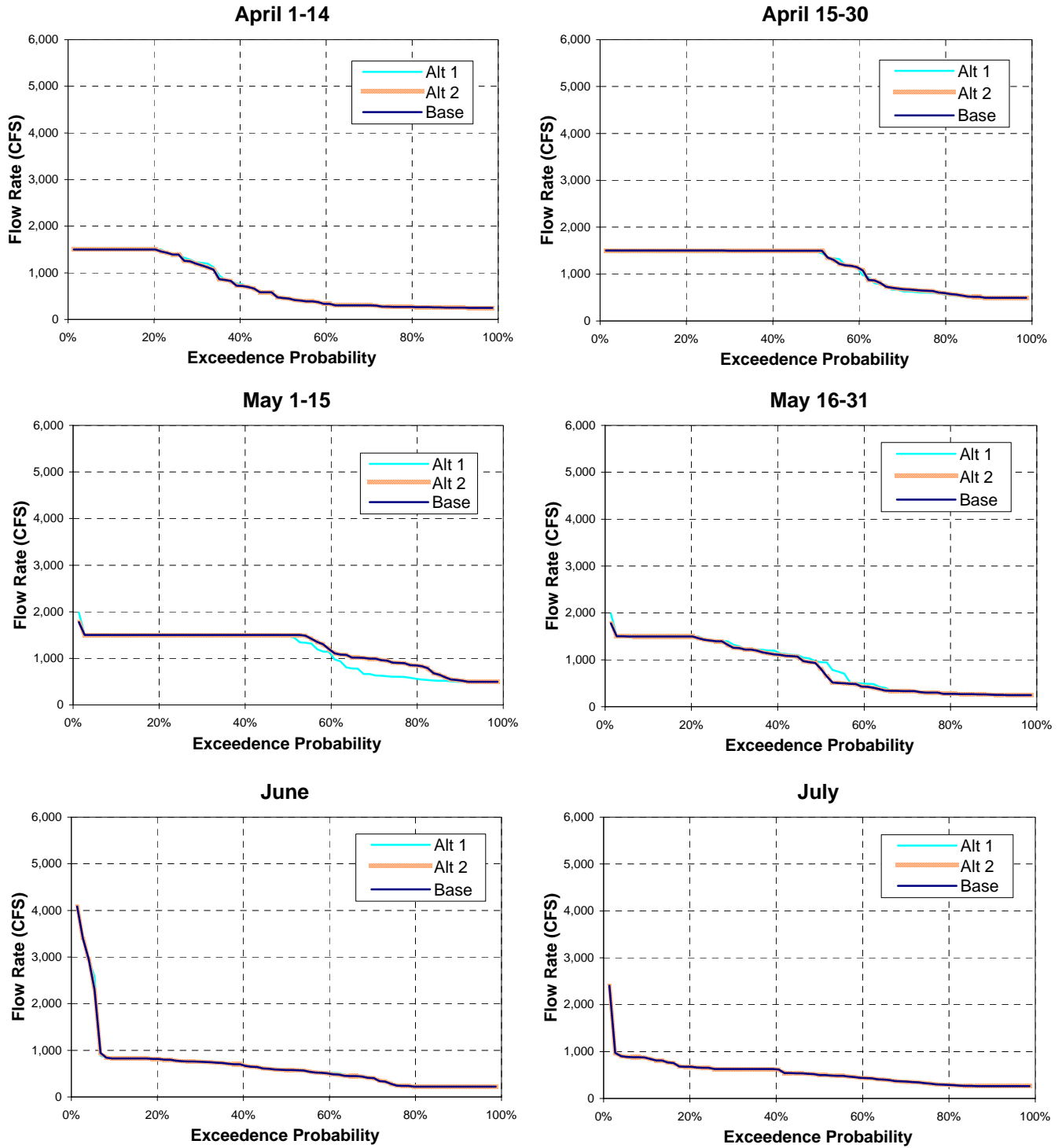


Figure E-6. Exceedence Curves of Stanislaus River Flow below Goodwin Dam

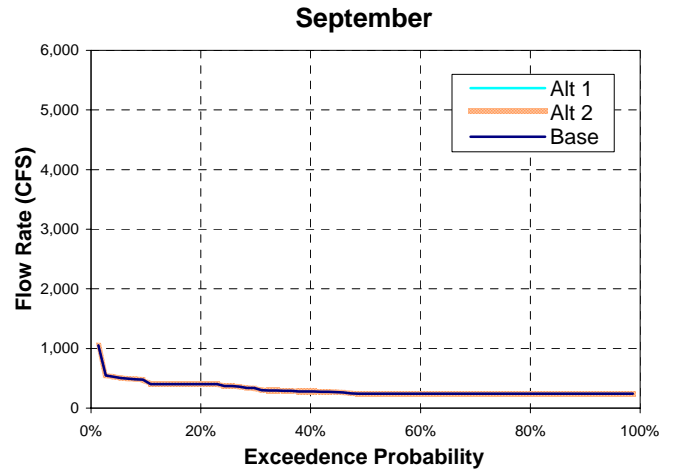
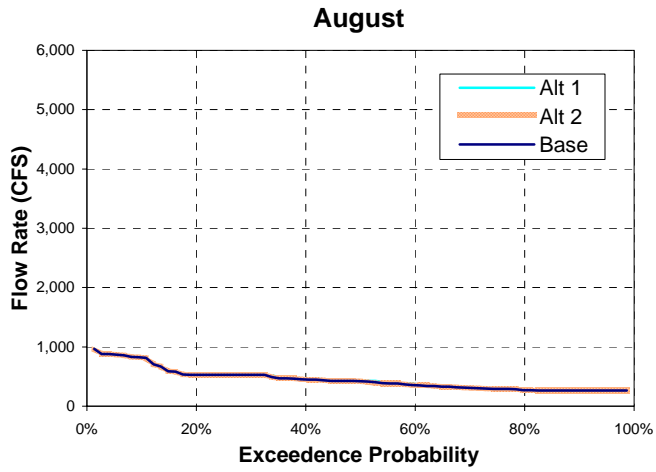


Figure E-7. Exceedence Curves of Tuolumne River Flow below New Don Pedro Reservoir

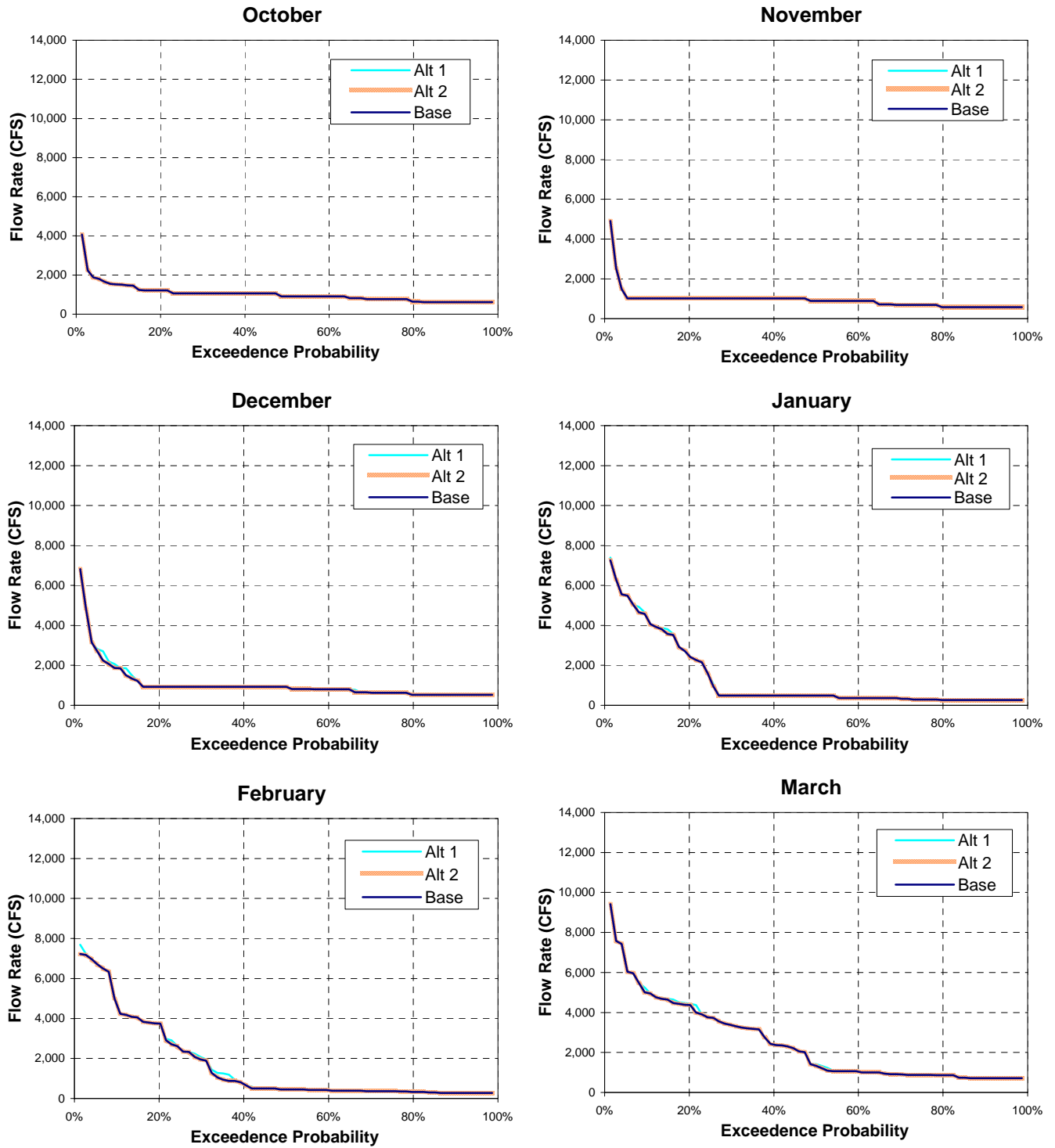


Figure E-7. Exceedence Curves of Tuolumne River Flow below New Don Pedro Reservoir

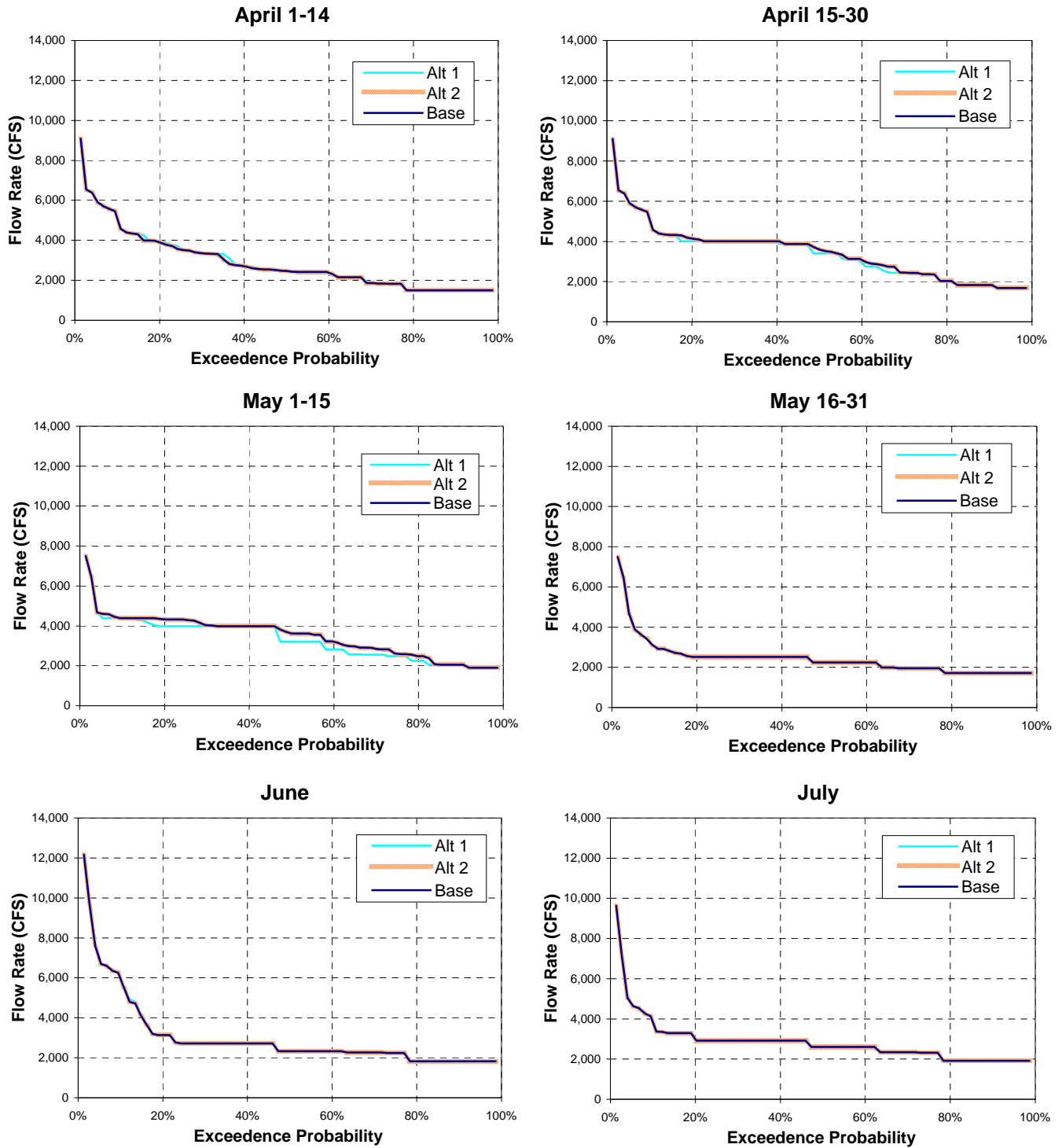


Figure E-7. Exceedence Curves of Tuolumne River Flow below New Don Pedro Reservoir

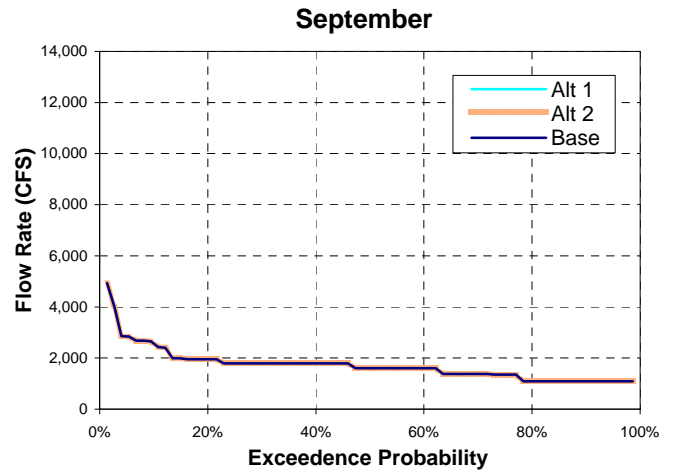
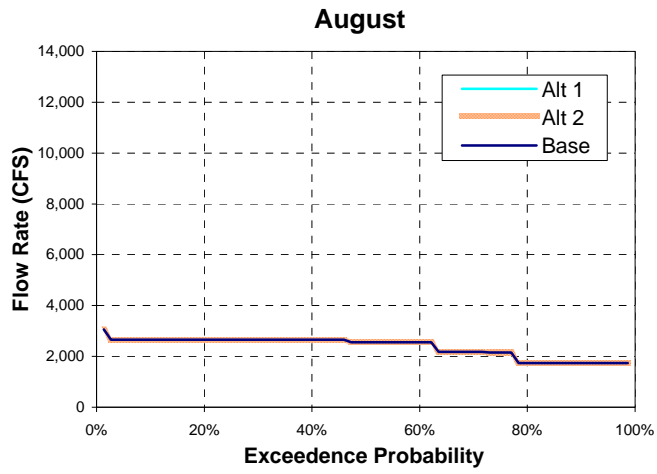


Figure E-8. Exceedence Curves of Merced River Flow below Lake McClure

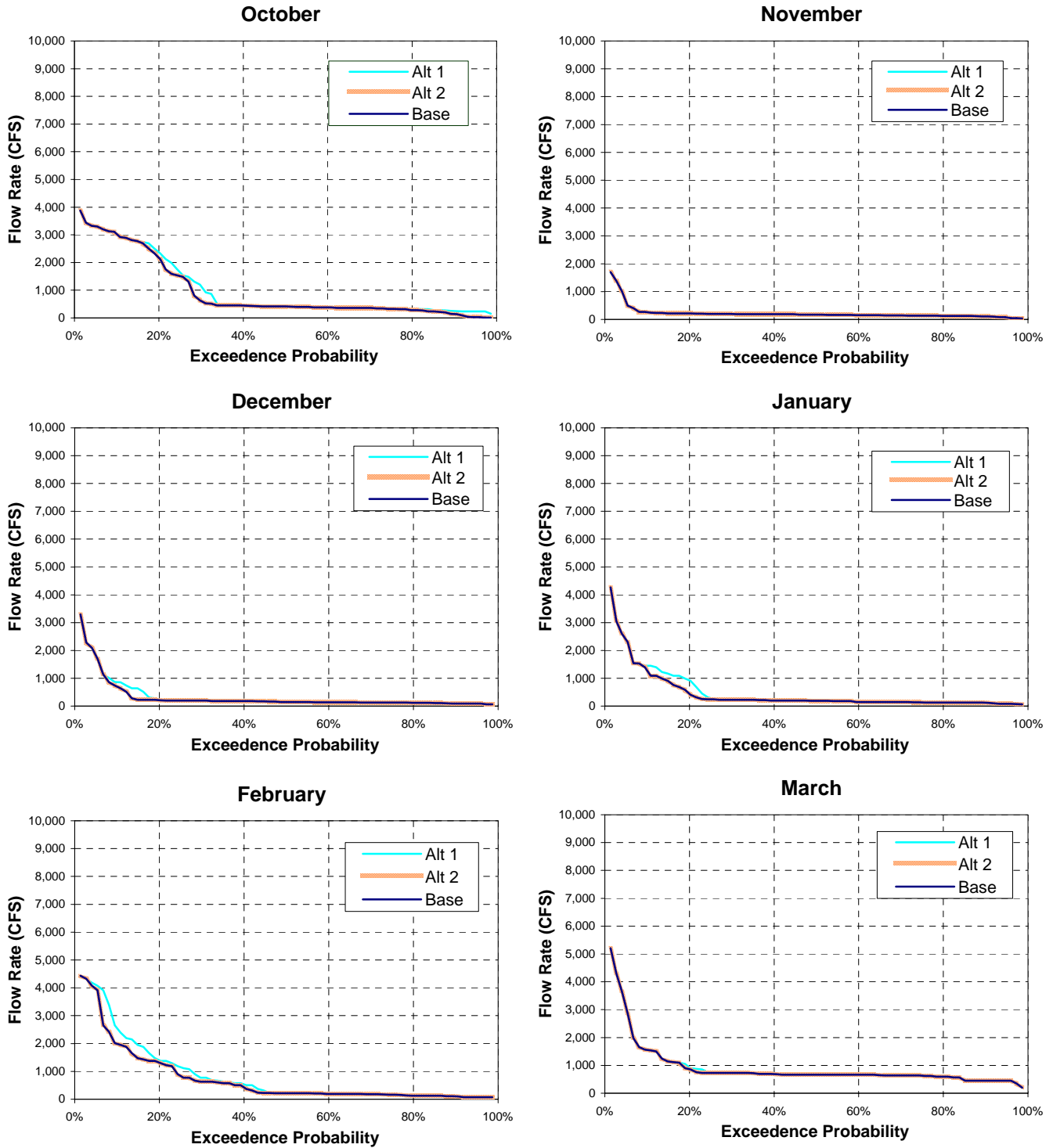


Figure E-8. Exceedence Curves of Merced River Flow below Lake McClure

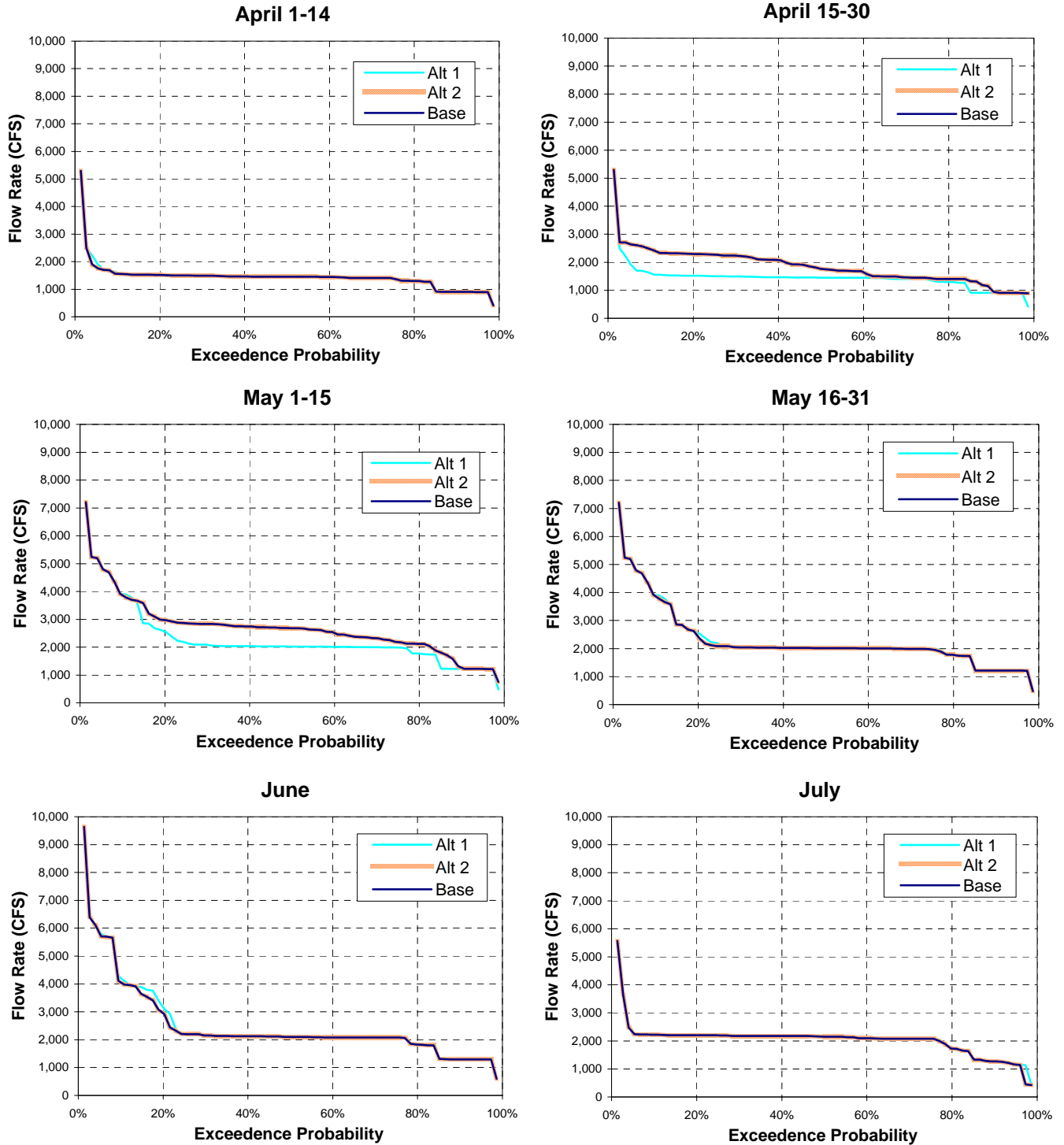


Figure E-8. Exceedence Curves of Merced River Flow below Lake McClure

