

Emergency Conservation Regulation Update

Carlos Mejia, Katheryn Landau, Mark
Emmerson, Eric Oppenheimer

Office of Research, Planning, and Performance

February 3, 2015



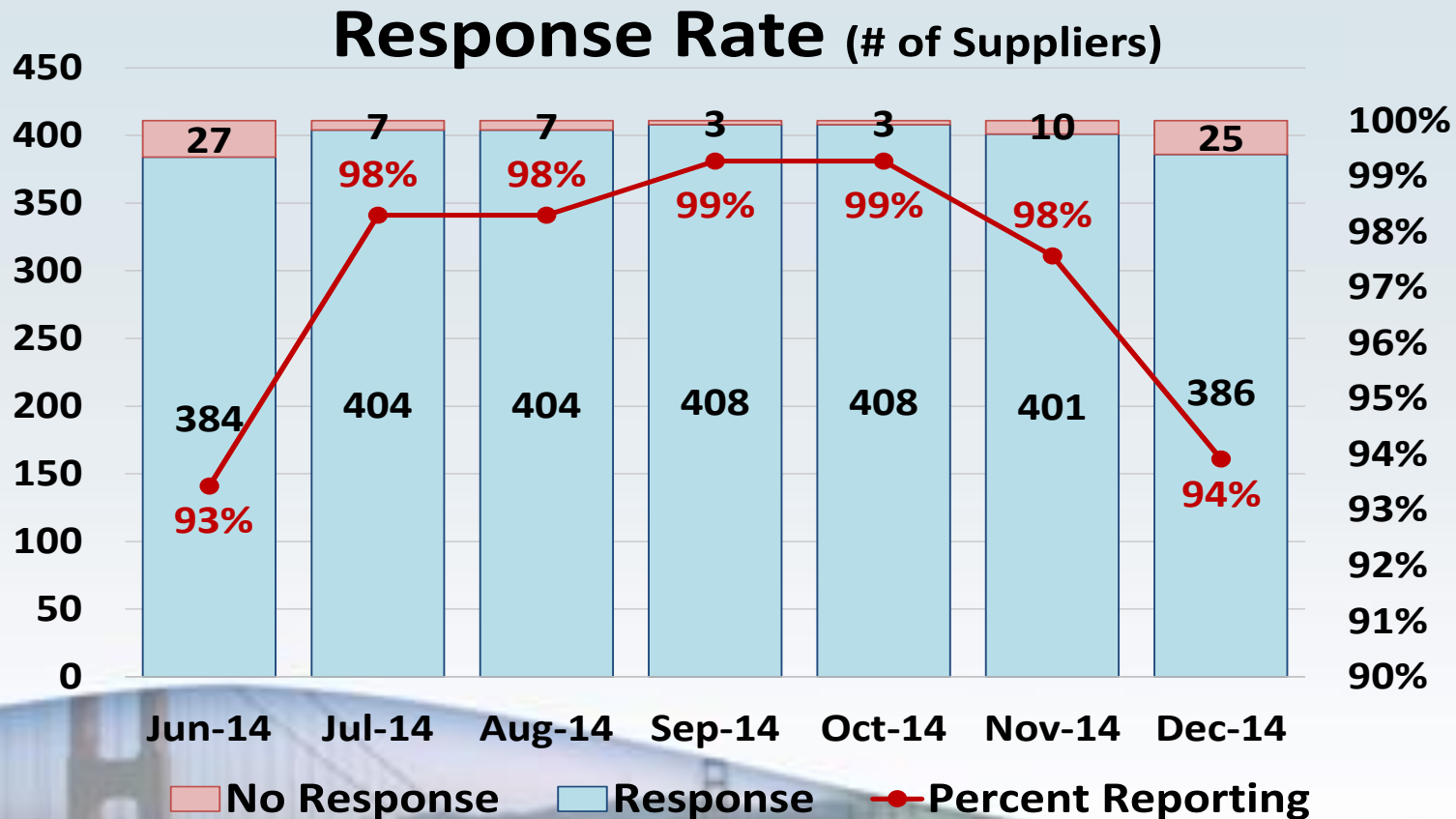
Status of Implementation

- Water production data collected from June through December (7 months)
- Compliance action and assistance underway
- Emergency regulation set to expire in April 2015



Data Collection

- 411 Retail Urban Water Suppliers
- 386 provided December production numbers

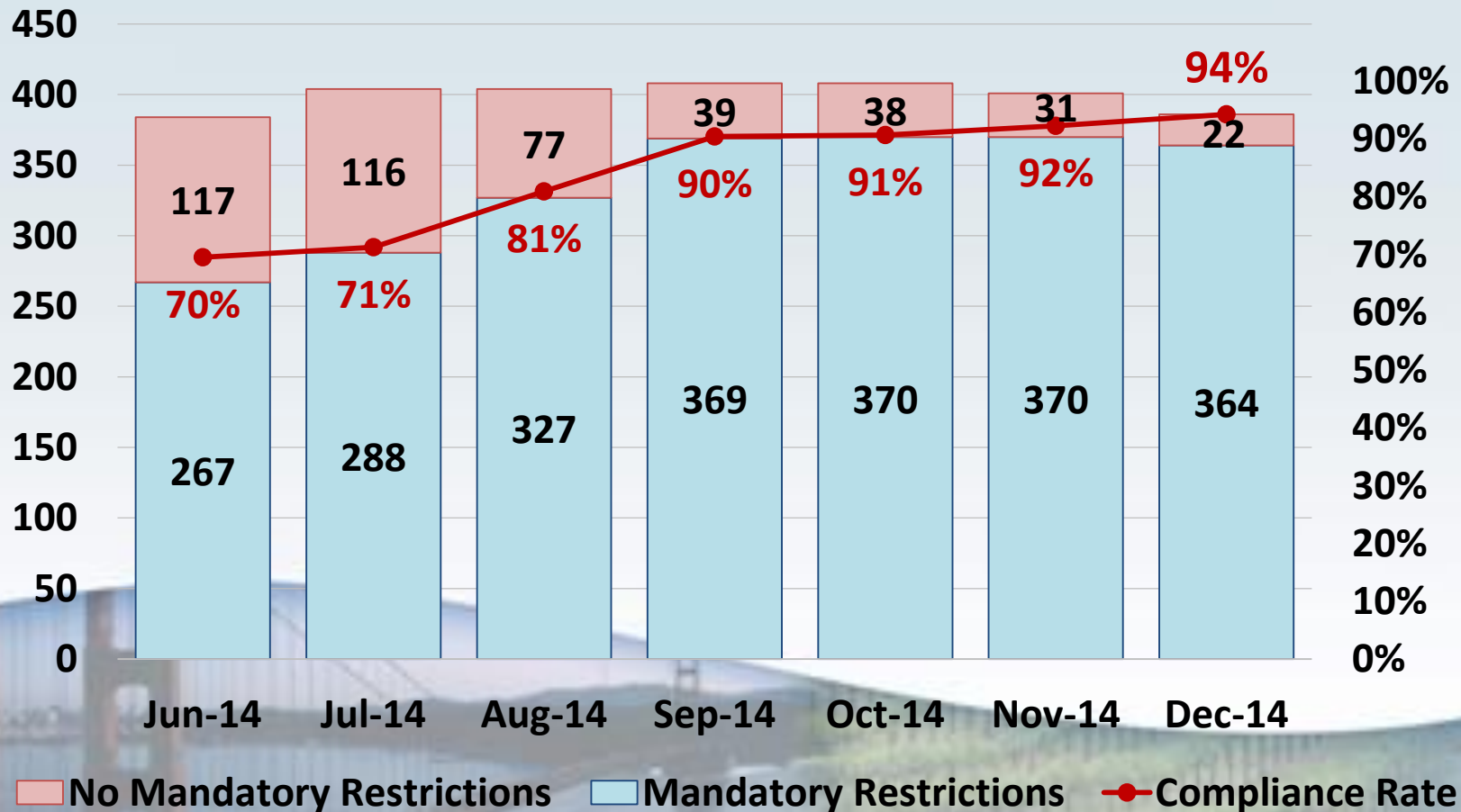


Note: Some suppliers submit data after the reporting deadline because they do not receive it in time, these data will be reflected in the following reporting month.

Mandatory Restrictions on Outdoor Water Use

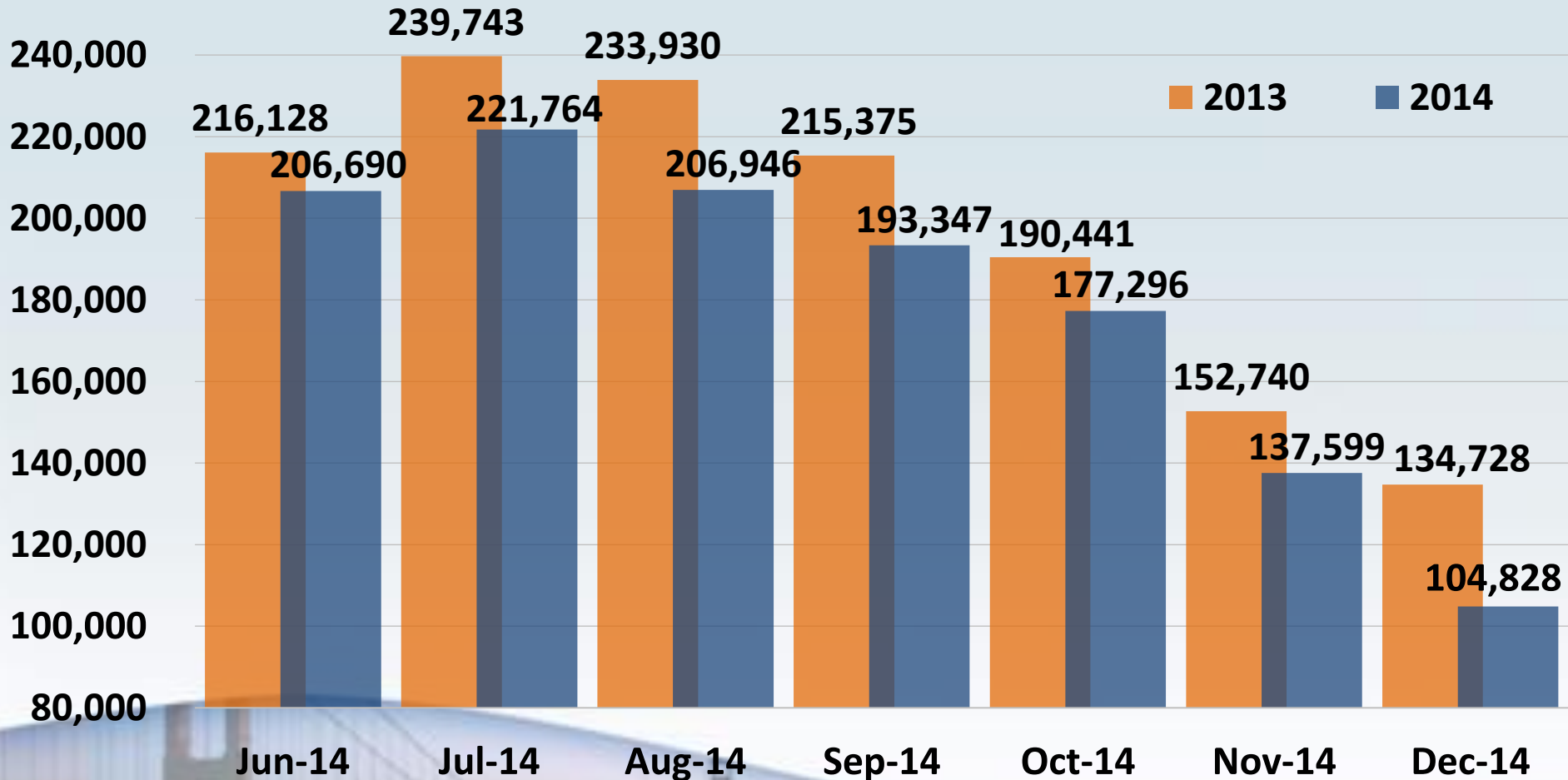
- Over 90% now implementing mandatory restrictions

Water Suppliers Implementing Mandatory Restrictions



Statewide Water Conservation Results

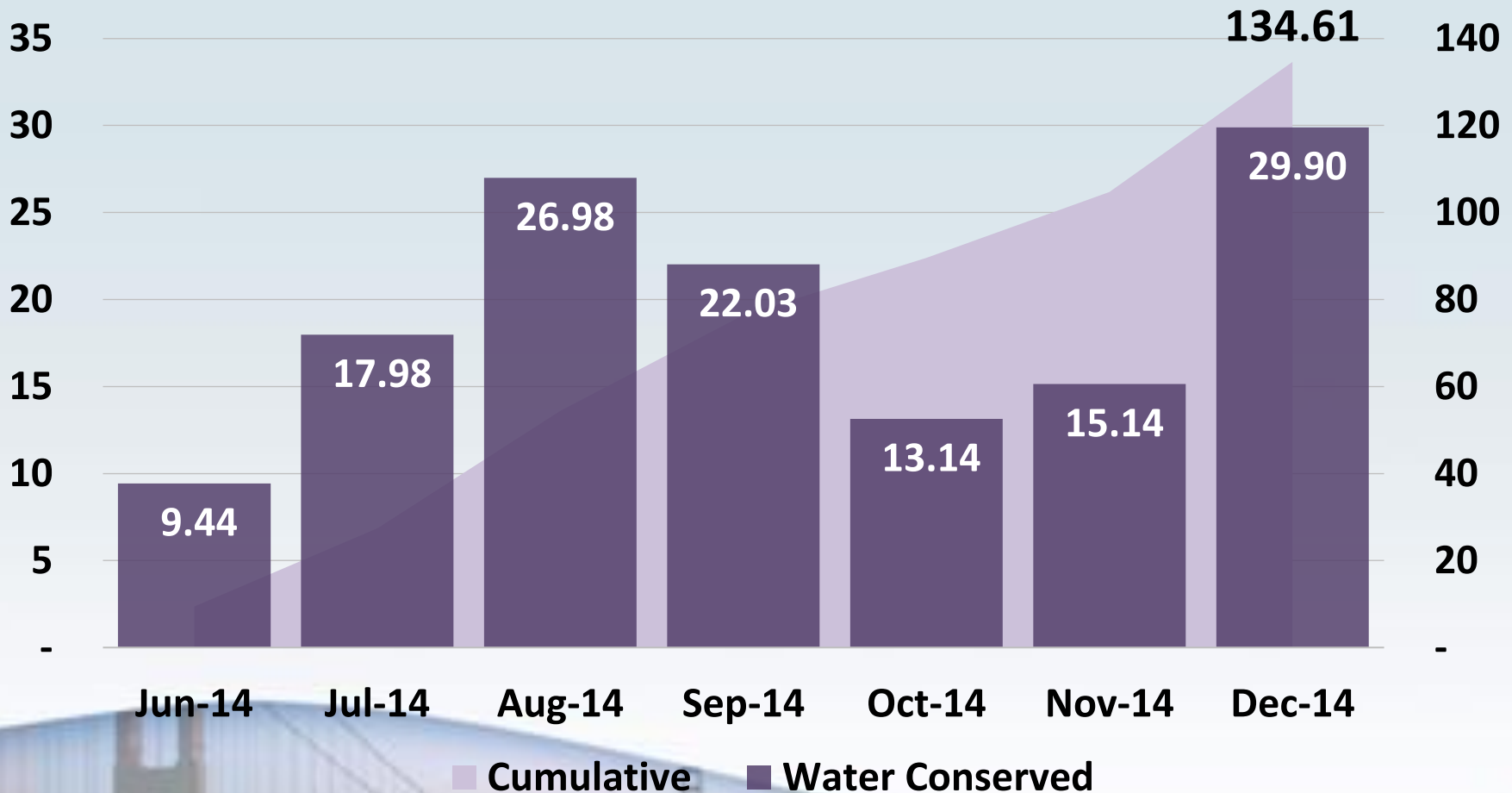
Water Production June-December (Million Gallons)



Over 134 Billion Gallons Saved June 2014 – December 2014

Statewide Water Conservation Results

Water Conserved June-December (Billion Gallons)

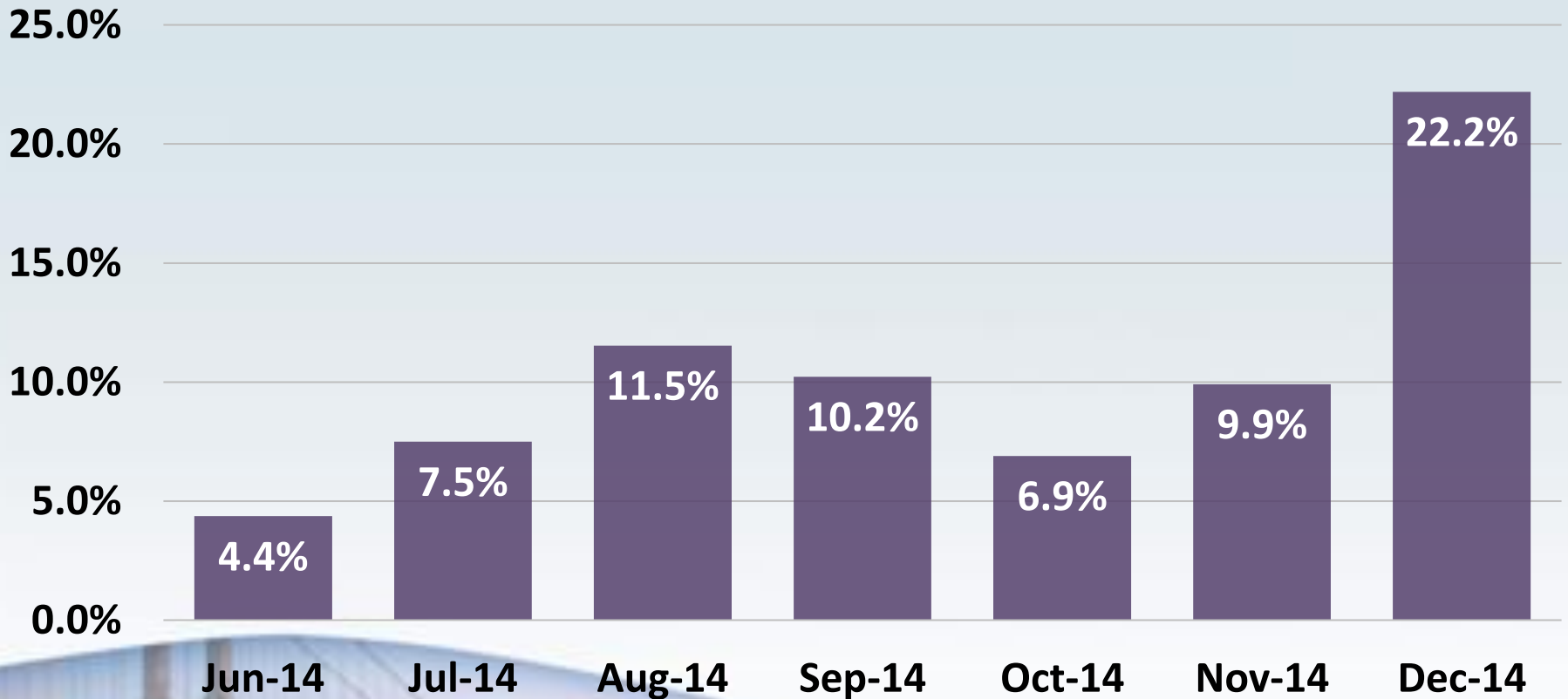


Over 413,102 Acre-Feet Saved June 2014 – December 2014, enough to provide 1.8 million Californians with water for 1 year

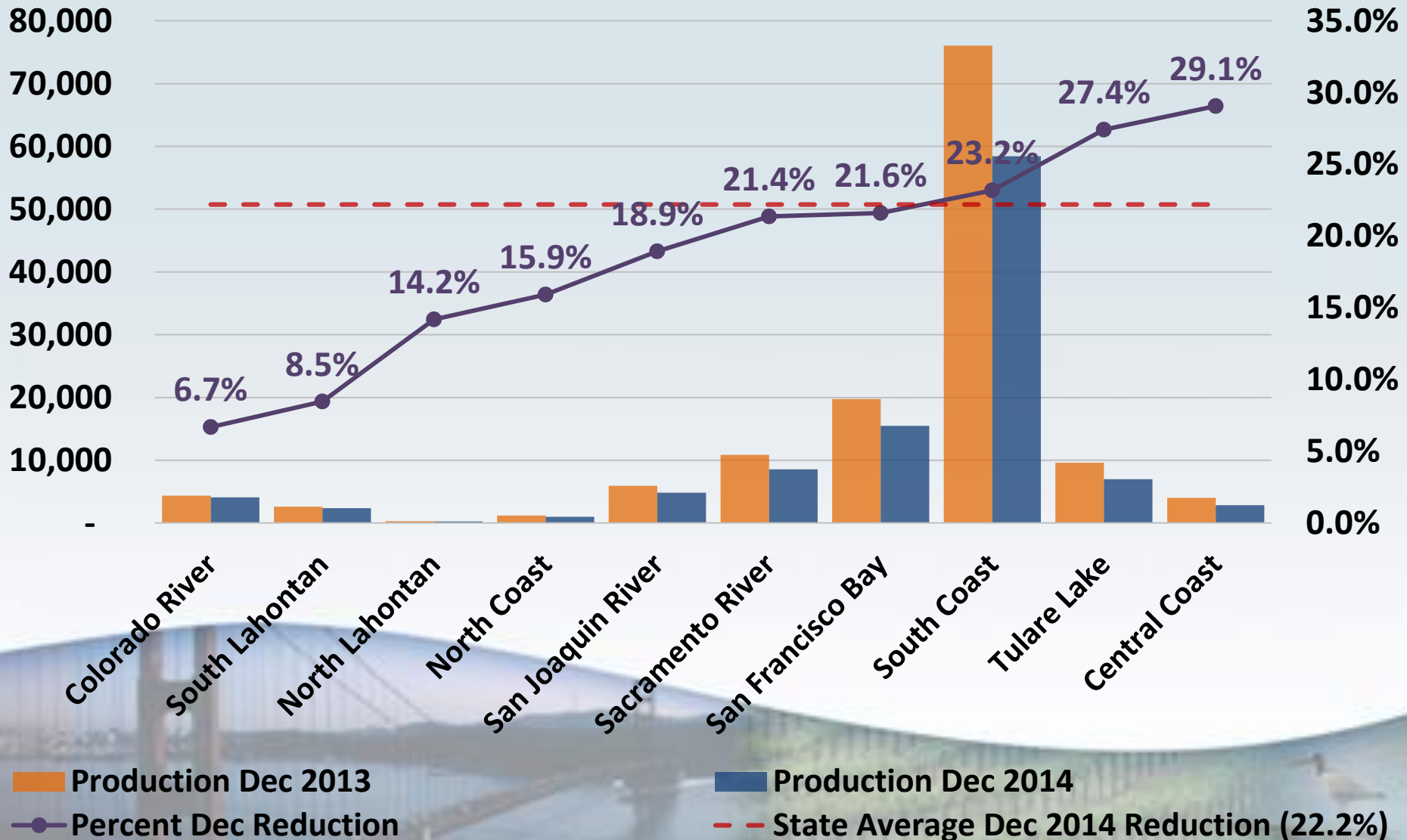
Statewide Water Conservation Results

Water Production Percentage Reduction

(Compared to Previous Year)



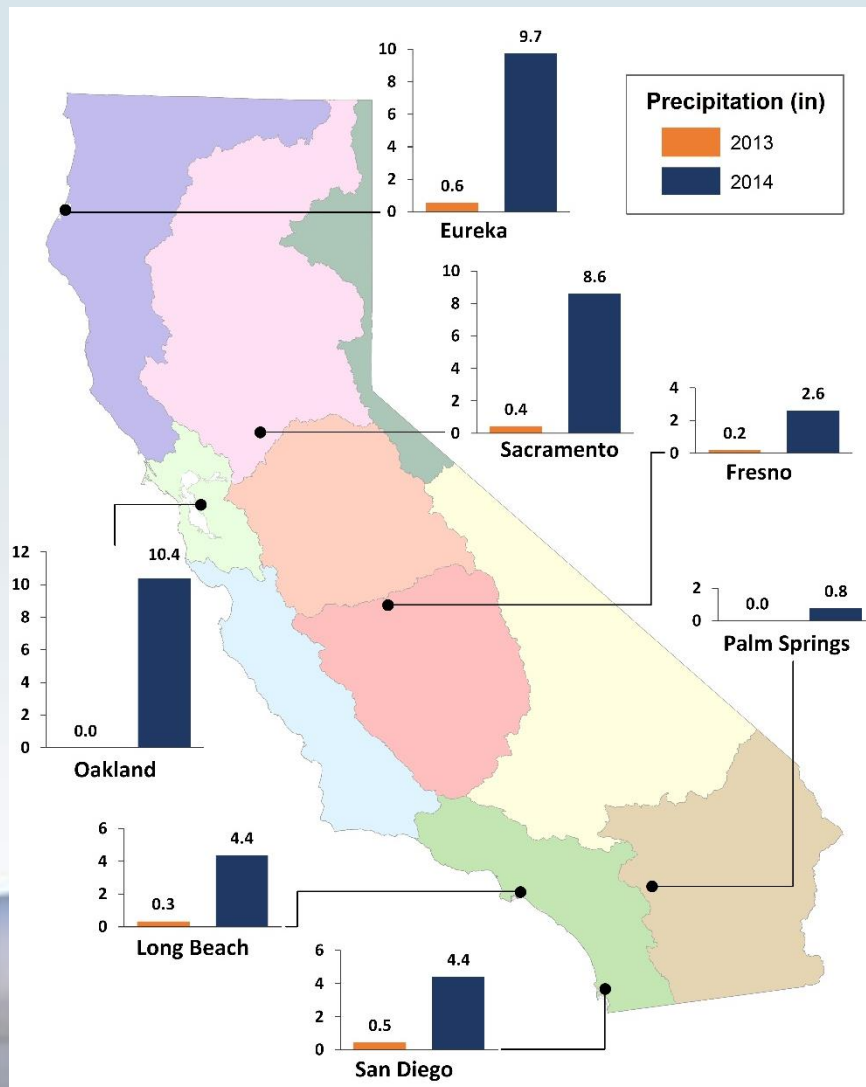
December Water Production by Hydrologic Region and Percent Reduction (Million Gallons)



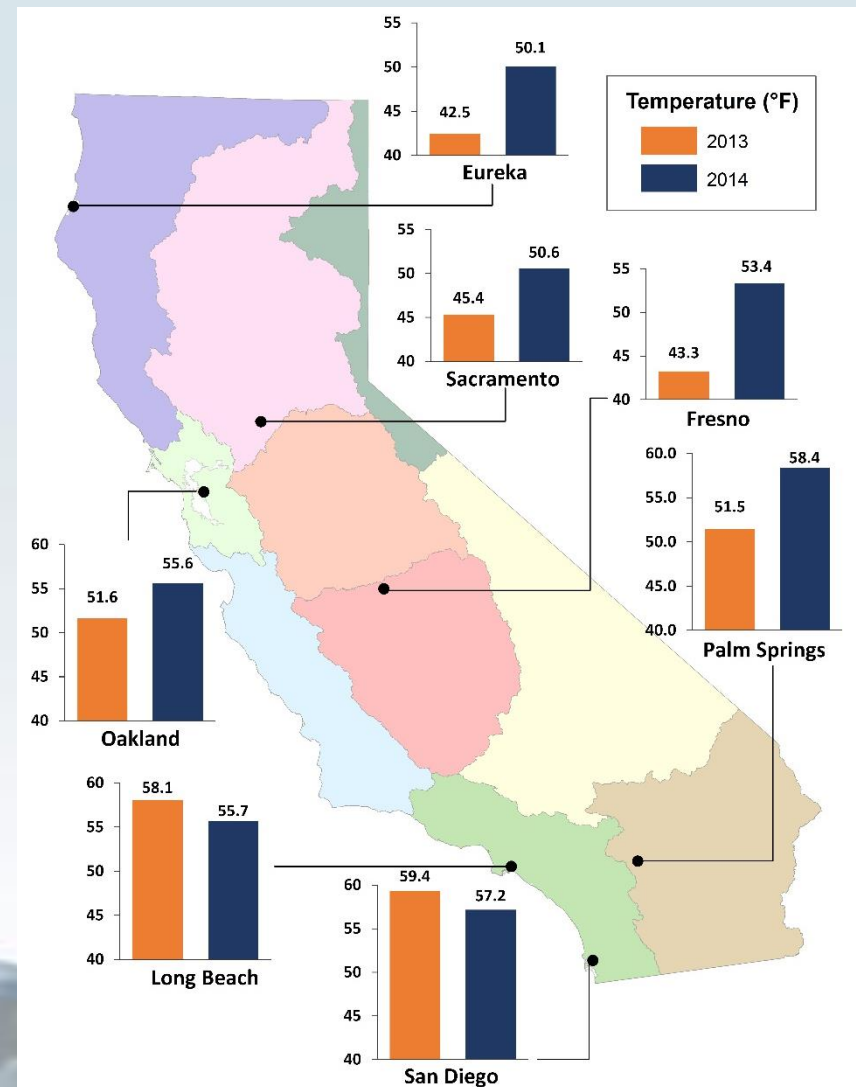
December Weather Conditions

(Select Cities)

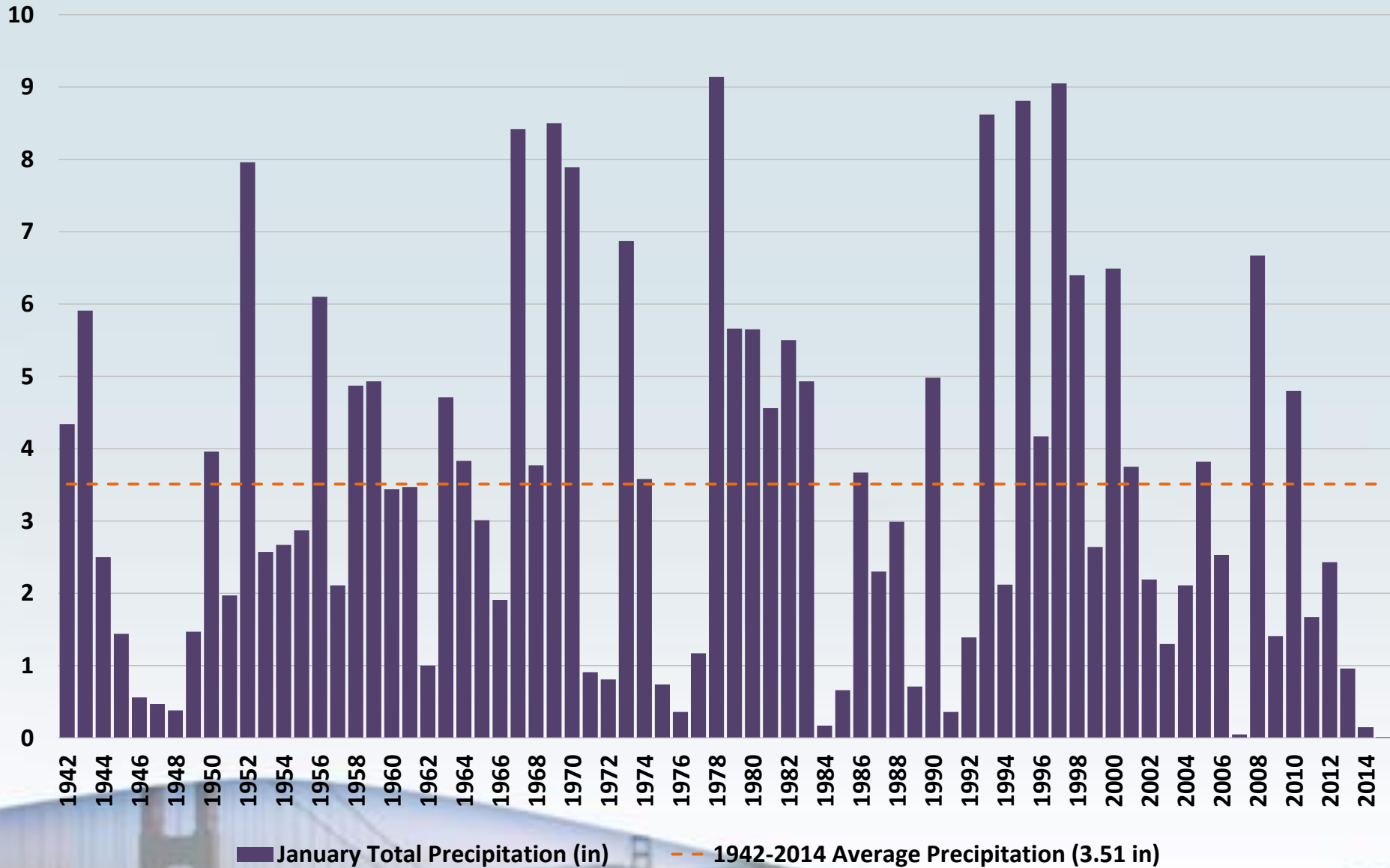
Precipitation



Temperature



Sacramento January Precipitation (in)



January 2015 is the driest for Sacramento on record

Data Sources: 1942-2014 - NOAA Climate at a Glance Time Series <http://www.ncdc.noaa.gov/cag/time-series>

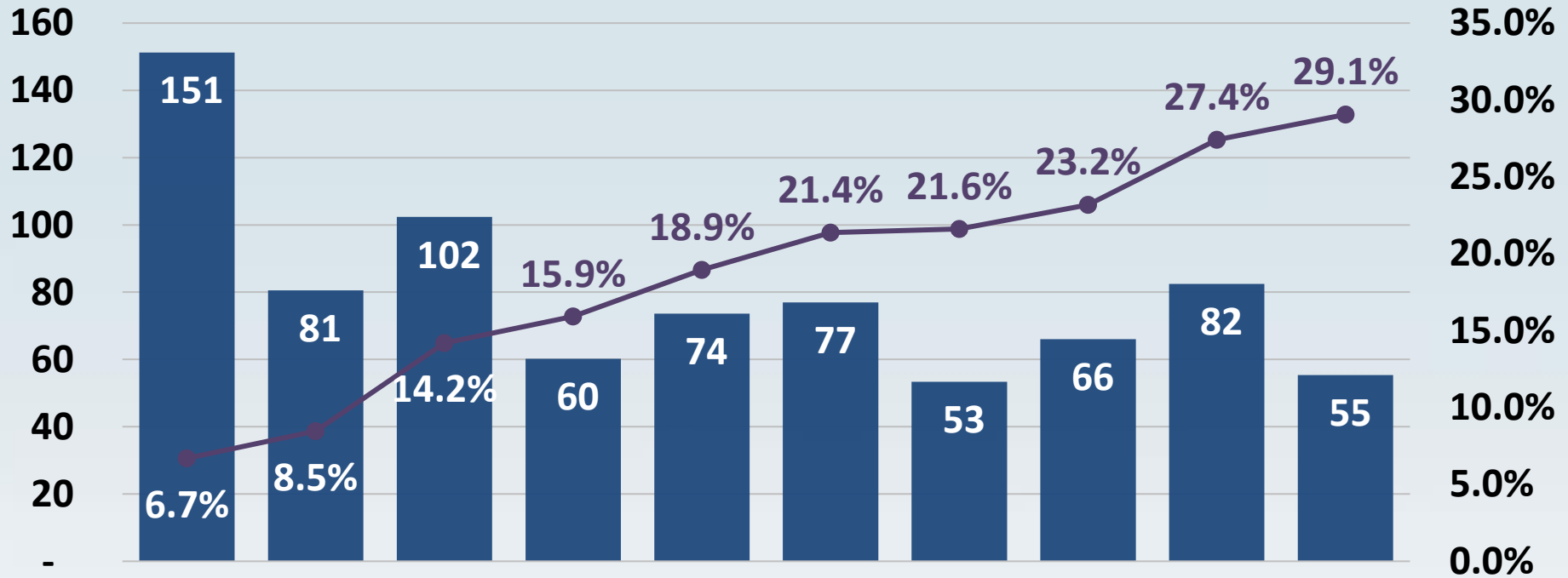
2015 - estimated Sacramento January 2015 precipitation <http://www.sacbee.com/news/local/article8446458.html>

December 2014 Residential Gallons per Capita per Day

- Highest R-GPCD figures = 330
- Lowest R-GPCD figures = 33
- Average December 2014 R-GPCD = **67**, down from **88** in November
- 55 GPCD is the performance standard for **indoor** use (78 suppliers representing about 9.5 million people are reporting less total use in December)
- High R-GPCD plus low percentage reduction raises questions about factors inhibiting conservation response



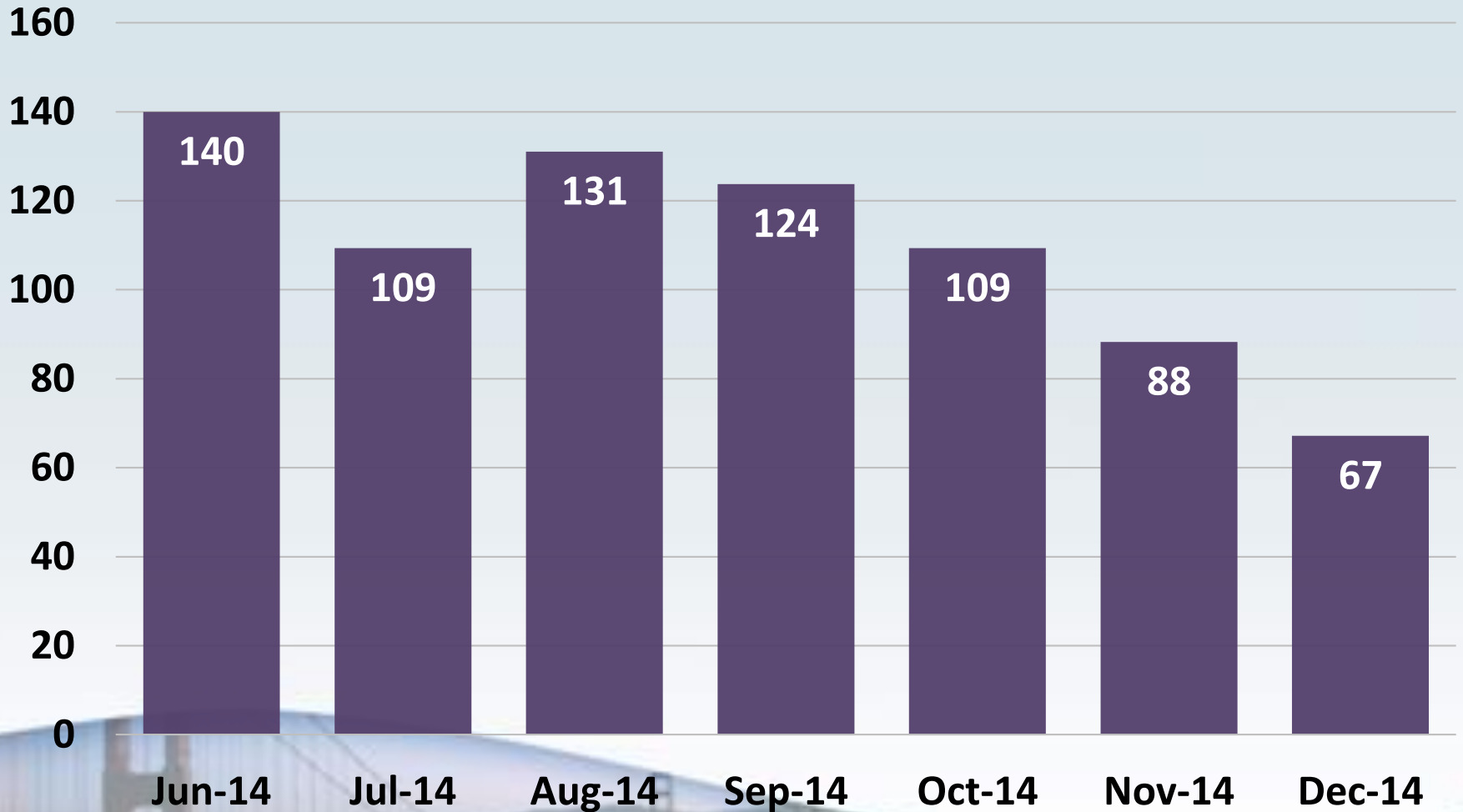
December 2014 Water Conservation Results



December 2014 Average R-GPCD

Percent Dec Reduction

Statewide Monthly R-GPCD



Noteworthy December 2014

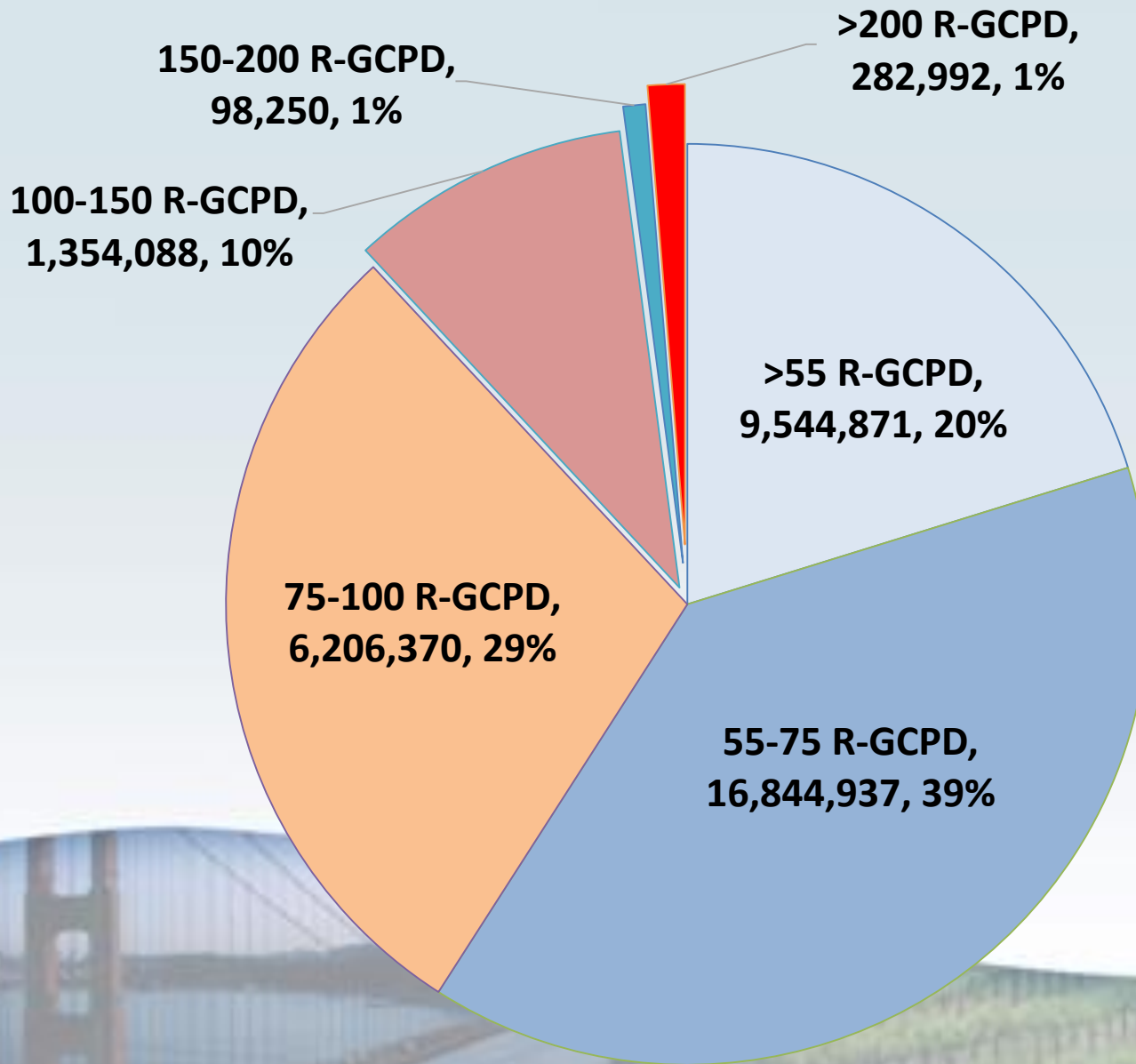
South Coast Conservation Achievements

Conservation greater than 20% and R-GPCD less than 60 gallons

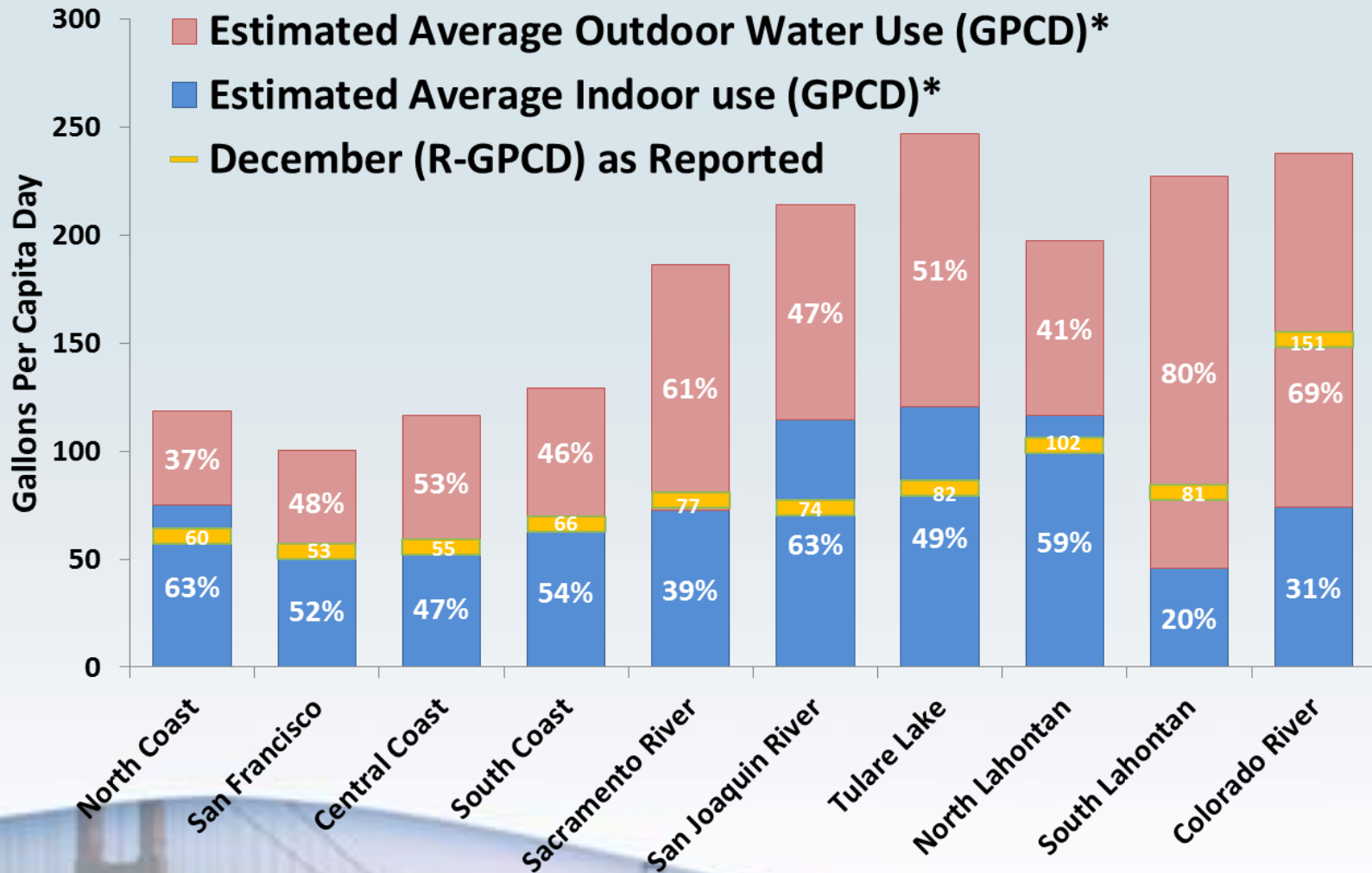
- | | |
|--------------------------------------|---------------------------------------|
| • San Diego City of | • California-American Water-San Diego |
| • Eastern Municipal Water District | • Vallecitos Water District |
| • Oxnard City of | • Chino Hills City of |
| • Oceanside City of | • El Toro Water District |
| • California Water Service-Dominguez | • Camarillo City of |
| • Escondido City of | • San Juan Capistrano City of |
| • Vista Irrigation District | • Fallbrook Public Utility District |
| • Valencia Water Company | • Crescenta Valley Water District |
| • San Buenaventura City of | • Port Hueneme City of |



December 2014 R-GPCD by Population



Indoor VS. Outdoor Use Estimates

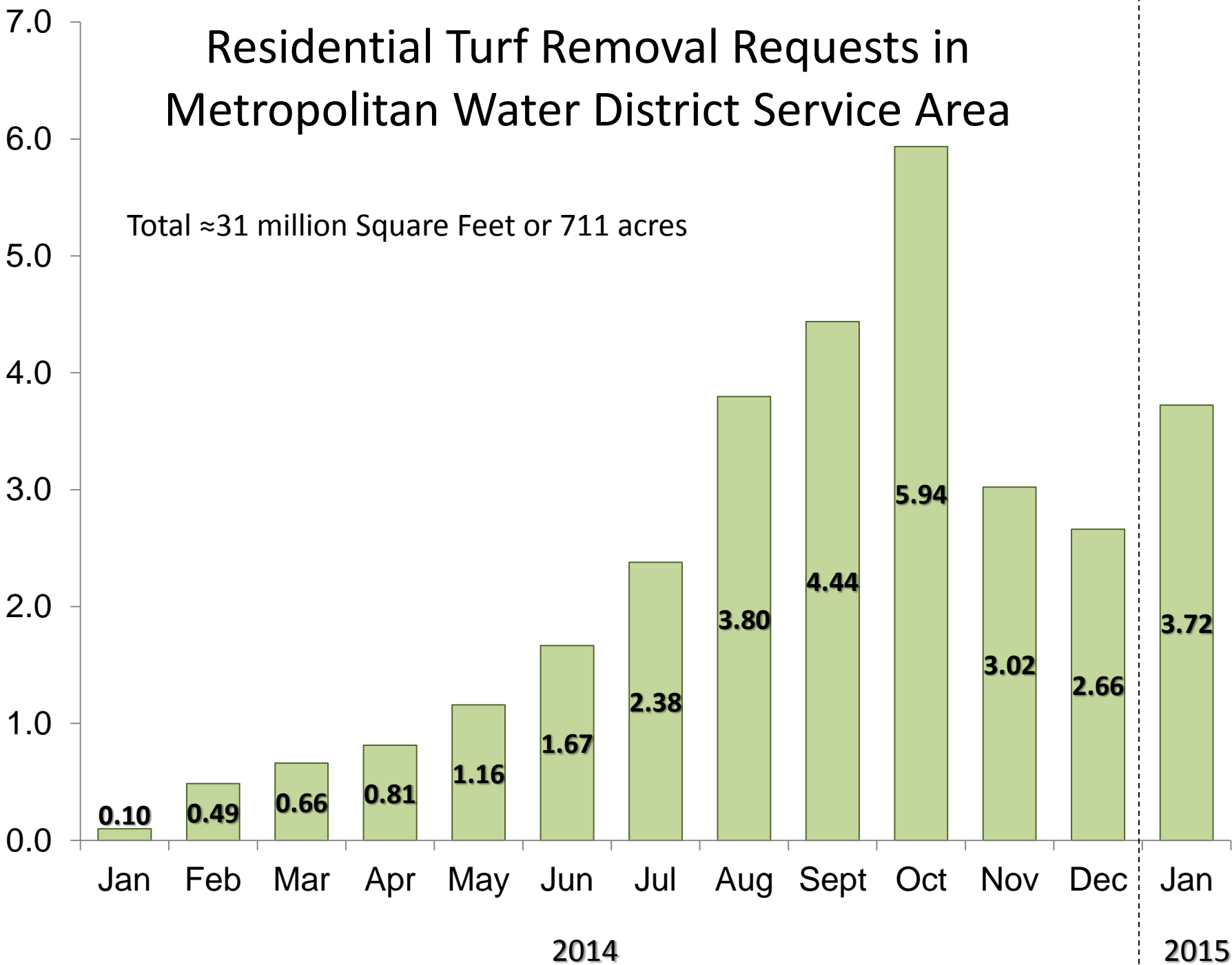


**Summary of DWR data by Pacific Institute
Annual Average 2001-2010*

Residential Turf Removal Requests in Metropolitan Water District Service Area

Total ≈31 million Square Feet or 711 acres

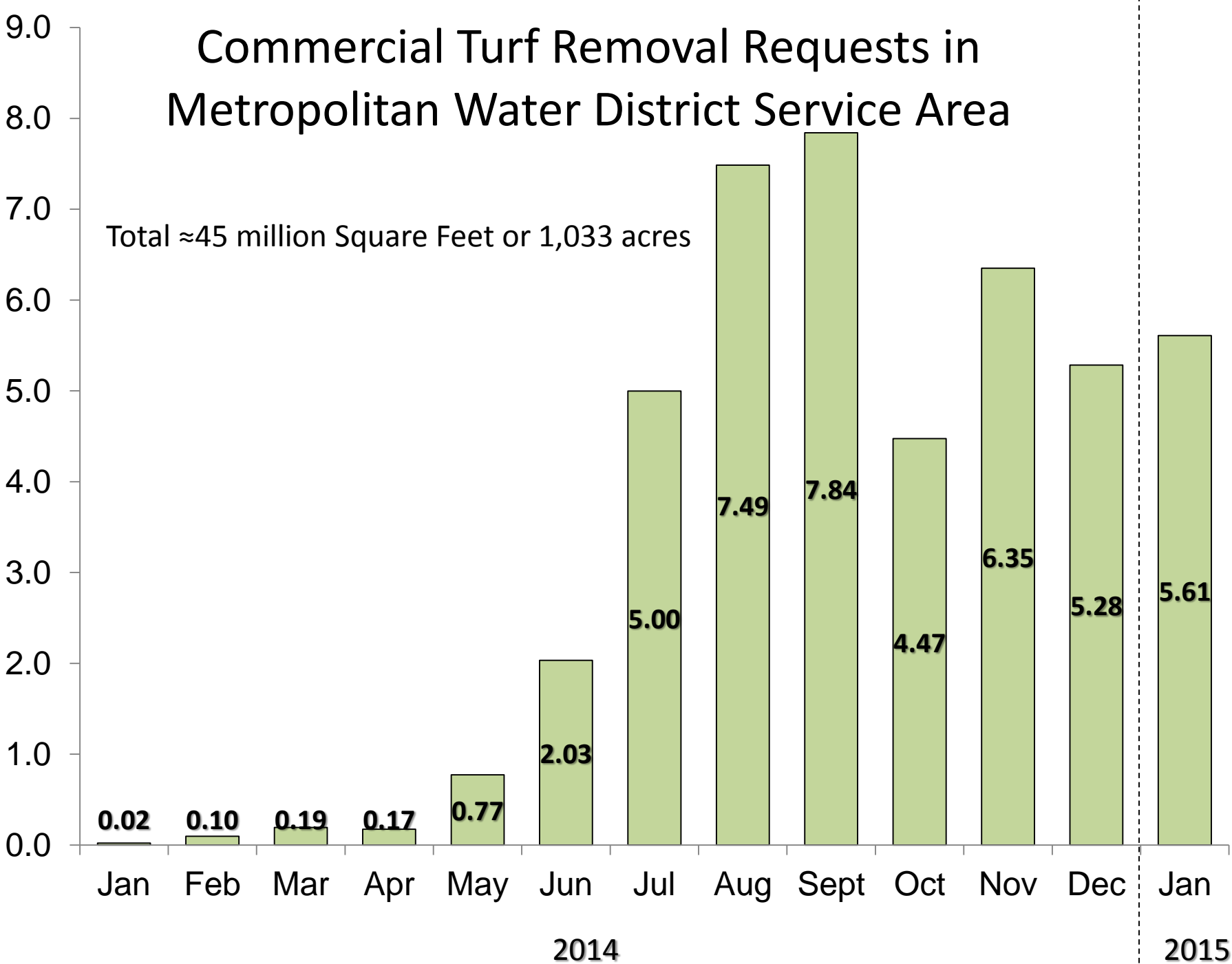
Millions of Square Foot



Commercial Turf Removal Requests in Metropolitan Water District Service Area

Total ≈45 million Square Feet or 1,033 acres

Millions of Square Foot



Next Steps

- Continue working with suppliers to achieve compliance with emergency regulation
- Evaluate recommendations from December 17 workshop and written comments
- Present an Information Item at February 17-18 Board Meeting focused on potential options for next steps- Including:
 - Extending and/or augmenting current emergency regulation before April 2014 expiration date
 - Funding Opportunities
 - Focused/location specific use of other authorities

