

Emergency Conservation Regulation Update

Rafael Maestu, Mark Emmerson, Carlos Mejia,
Eric Oppenheimer

Office of Research, Planning, and Performance

December 2, 2014



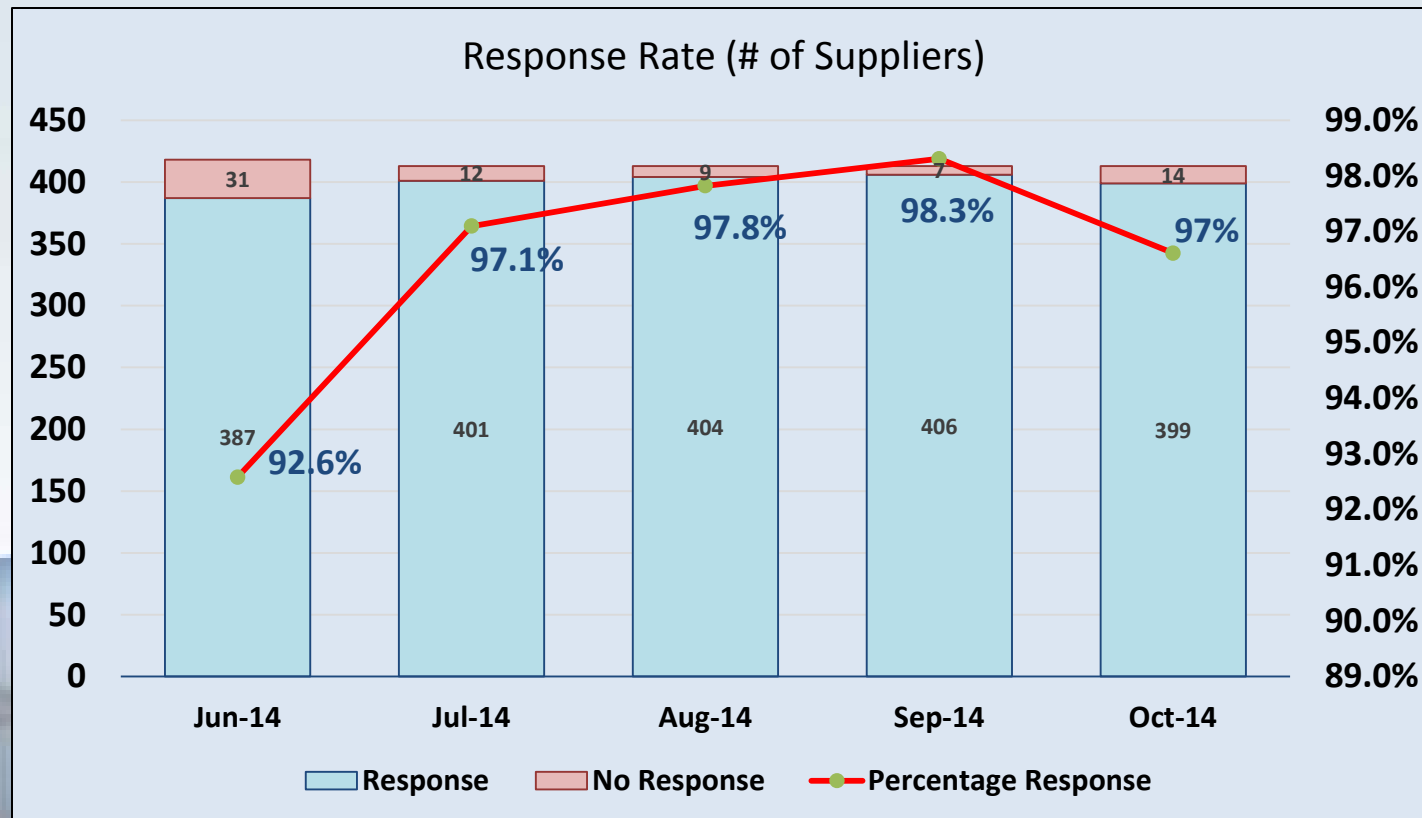
Status of Implementation

- Water production data collected from June through October (5 months)
- Initial Residential Per-Capita Per-Day estimates reported October 15 and continue
- Compliance action and assistance underway
- Emergency regulation will expire in April 2015



Data Collection

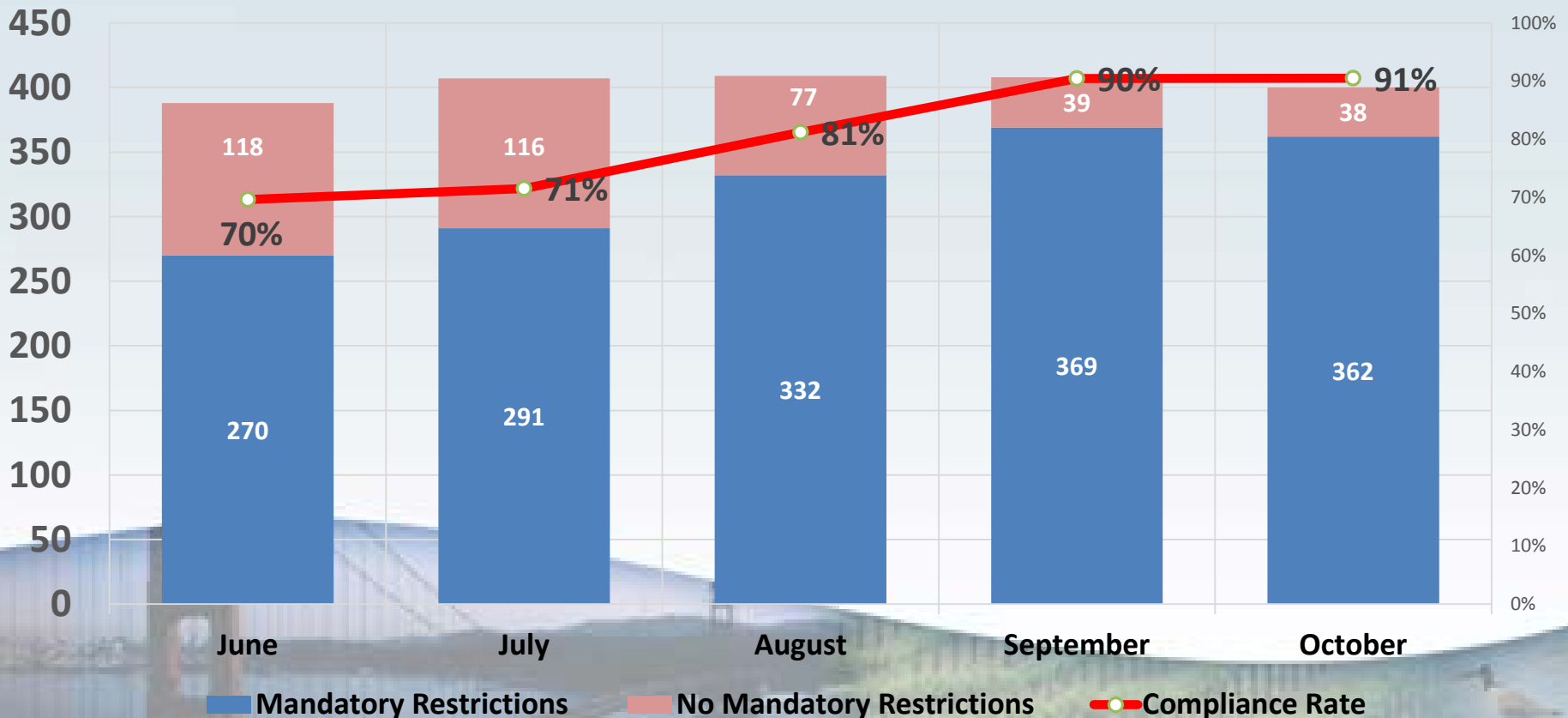
- 413 Retail Urban Water Suppliers
- 399 provided October production numbers
≈34 million Californians represented



Mandatory Restrictions on Outdoor Water Use

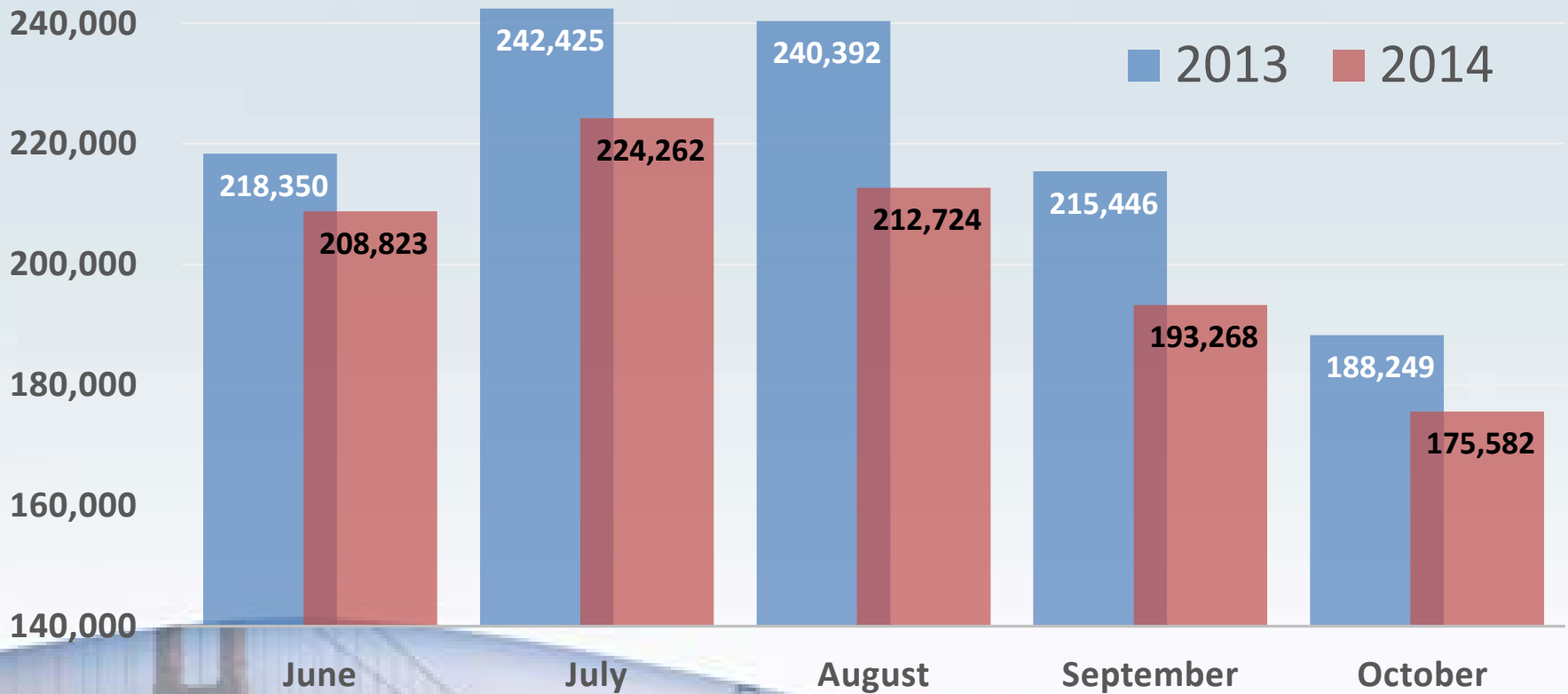
- 91% now implementing mandatory restrictions

Water Suppliers Implementing Mandatory Restrictions



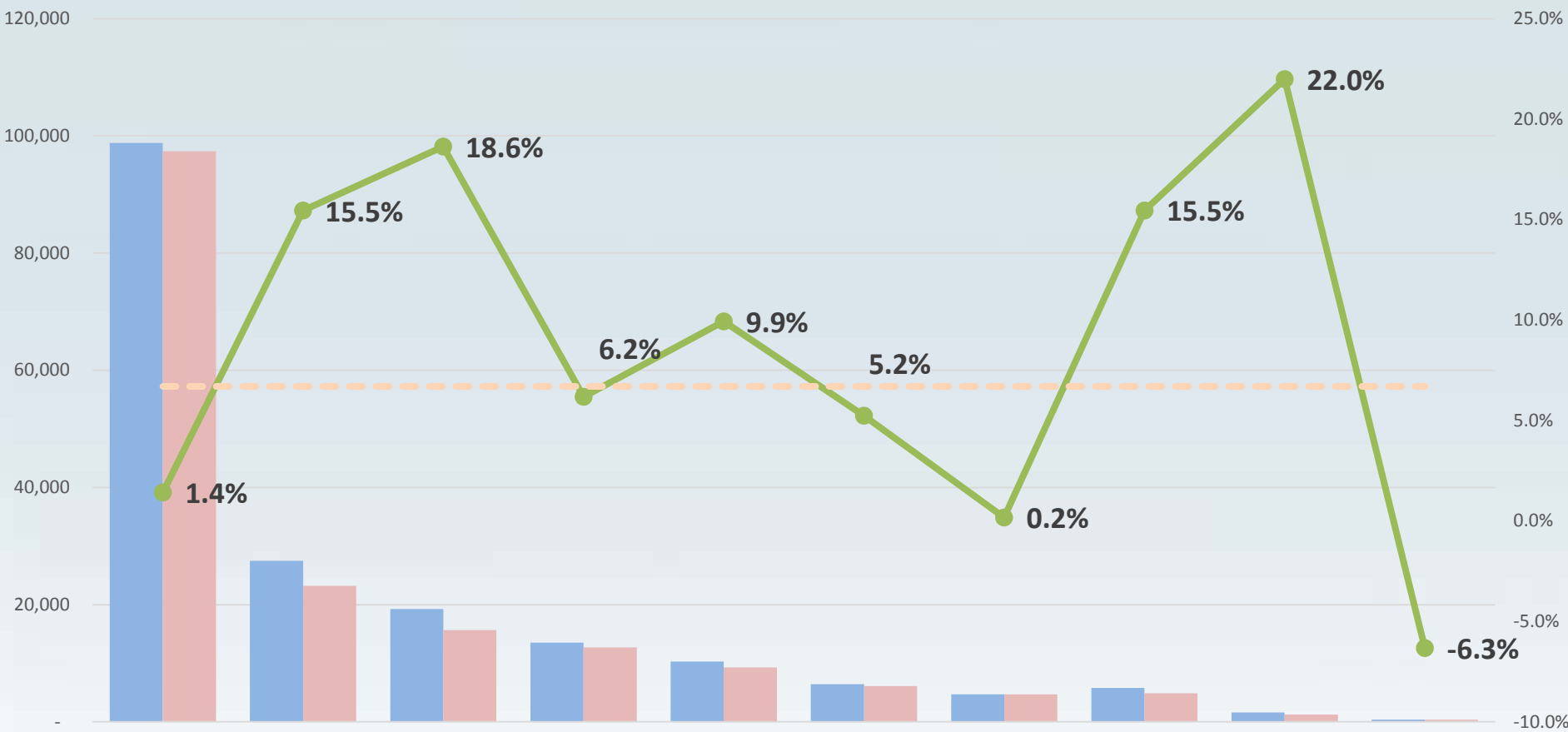
Statewide Water Conservation Results

Water Production June-October (Million Gallons)



≈ 90 Billion Gallons Saved June – October

October Water Production by Hydrologic Region and Percentage Reduction (Million Gallons)



Production Oct 2013

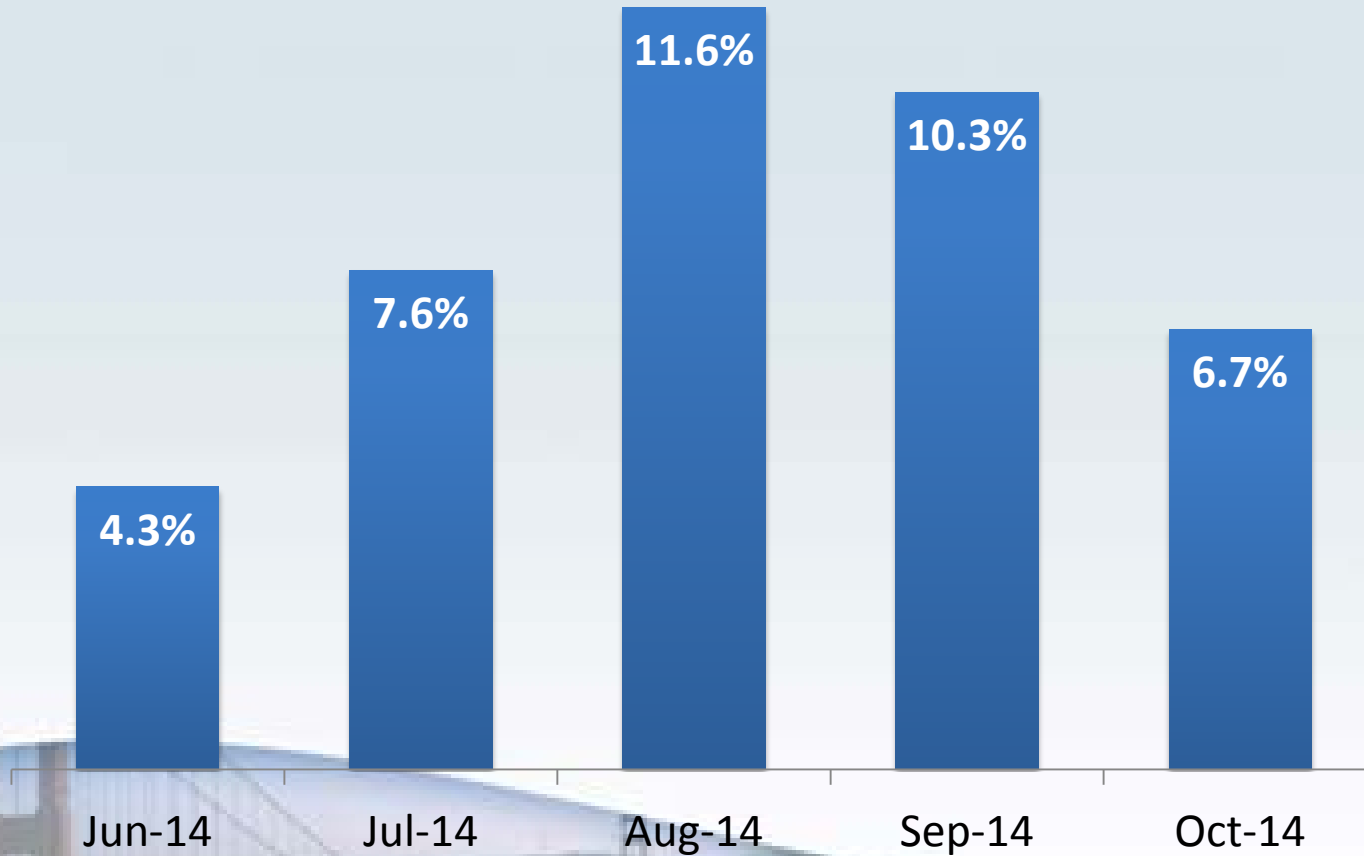
Production Oct 2014

Percentage Oct Reduction

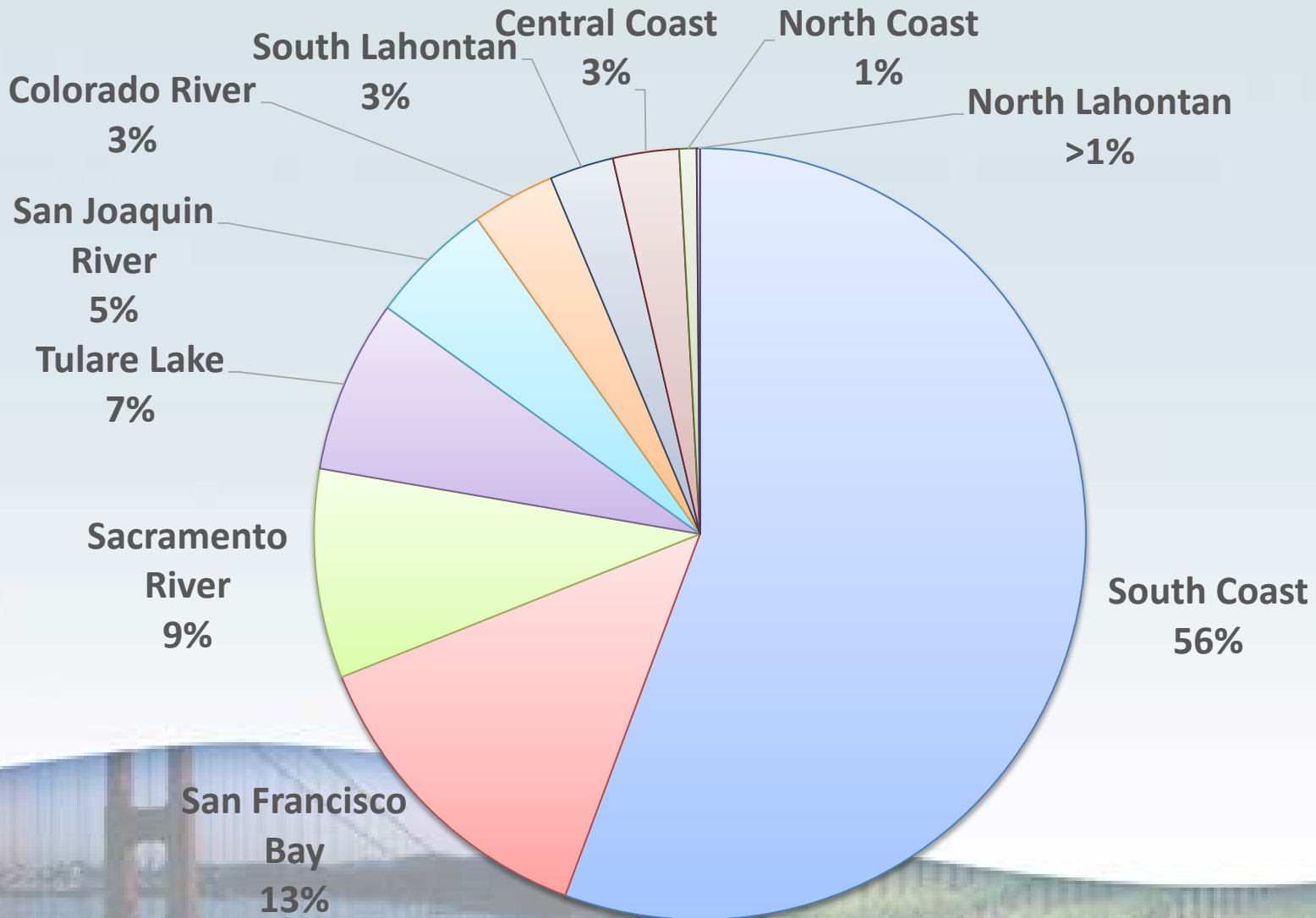
State Average Oct Reduction 6.7%

Water Conservation Trend

Water Production Percentage Reduction
(compared to previous year)



Water Use by Hydrologic Region



Possible Reasons for Conservation Declines

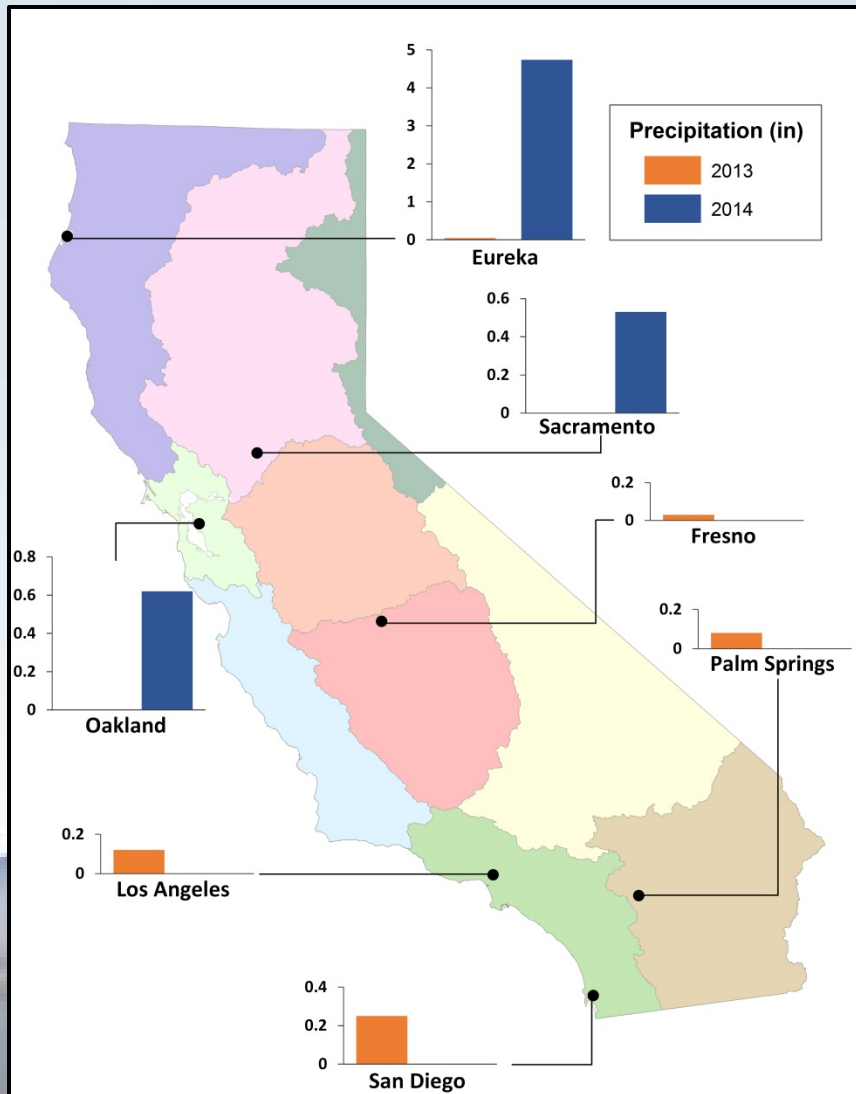
- Conservation “Fatigue”
- Lower Fall Outdoor Water Use
- Southern California Weather
- Others?



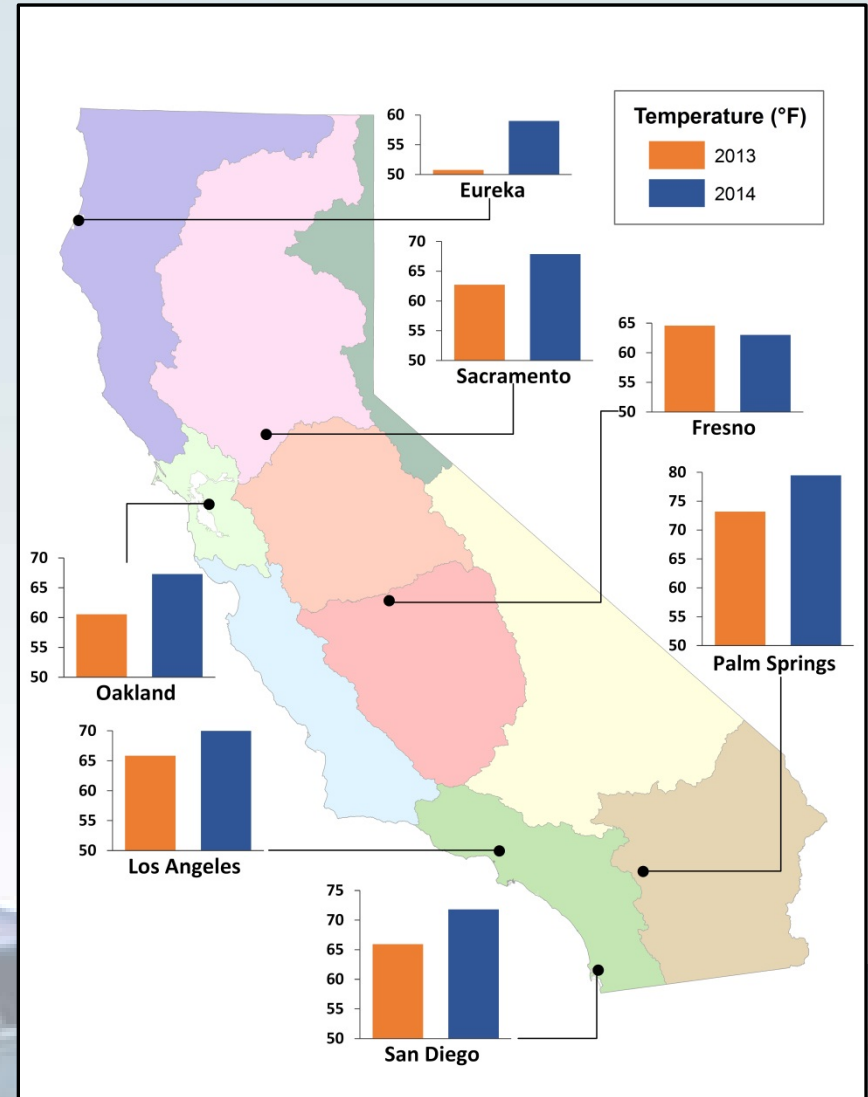
October Weather Conditions

(Select Cities)

Precipitation



Temperature



October 2014 Residential Gallons per Capita per Day

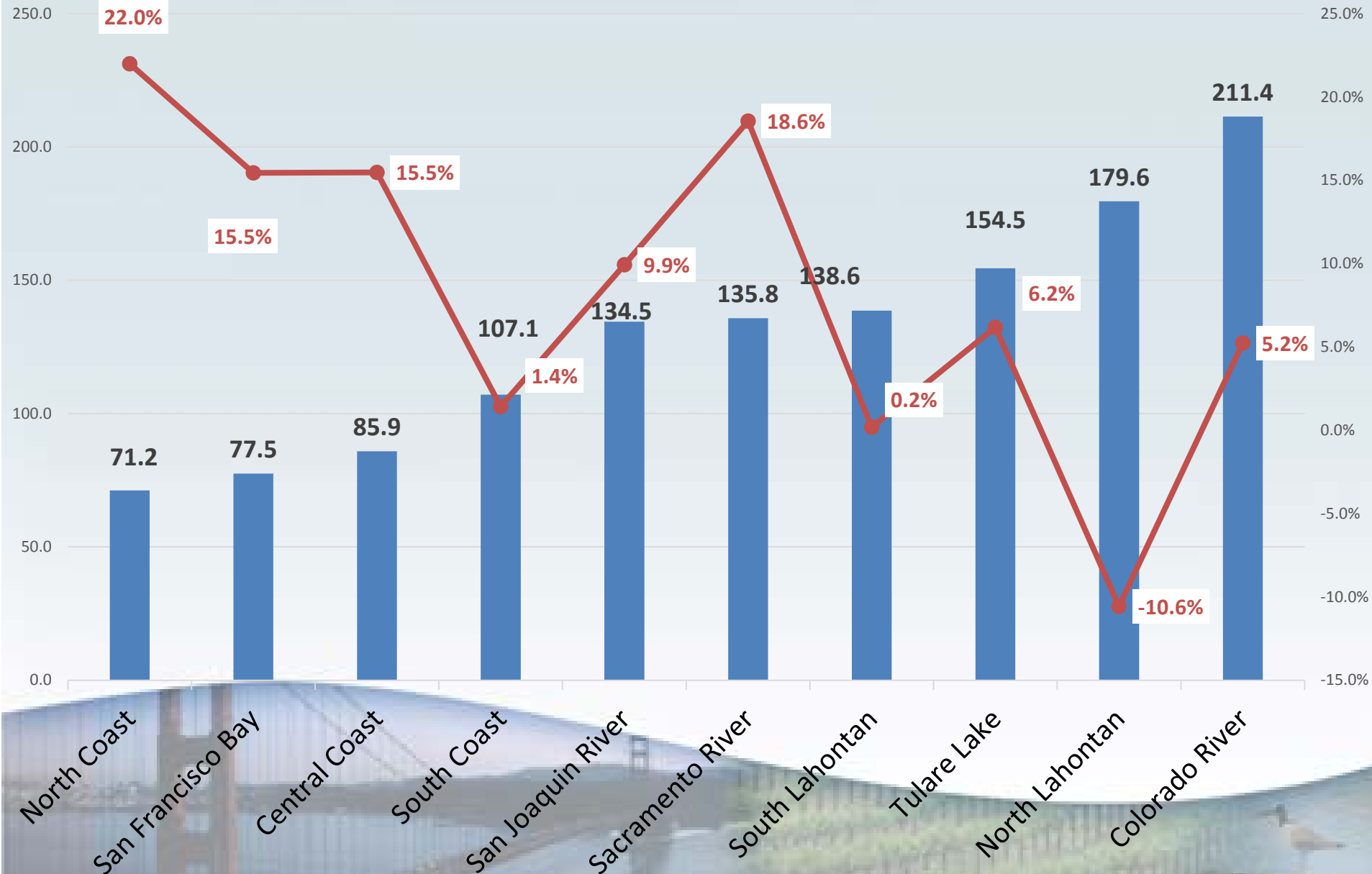
- Highest R-GPCD figures > 500
- Lowest R-GPCD figures < 50
- Average October 2014 R-GPCD = **109**, down from **117** last year
- 55 GPCD is the performance standard for **indoor** use
- High R-GPCD plus low percentage reduction raises questions about factors inhibiting conservation response

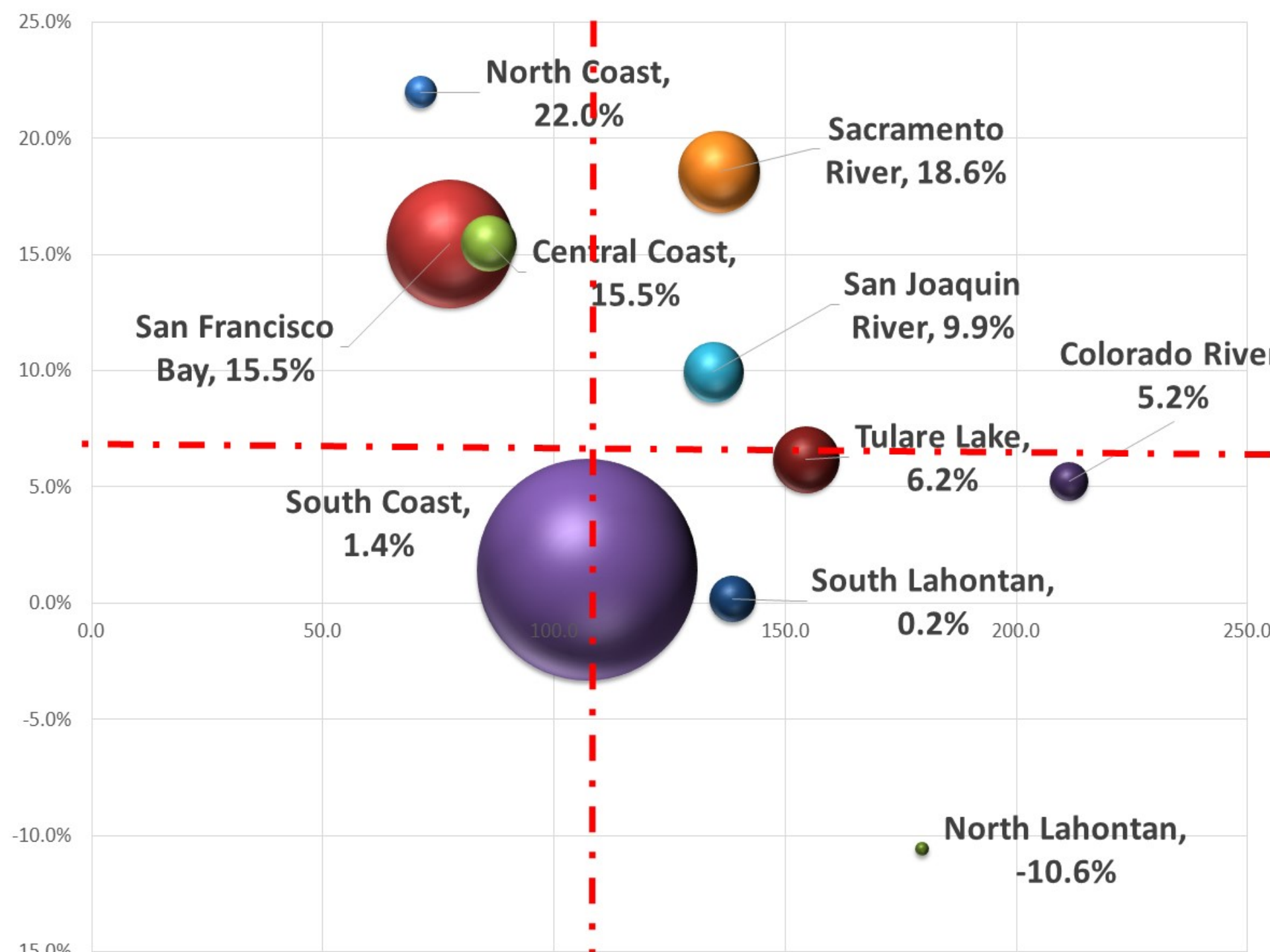


October 2014 Water Conservation Results R-GPCD

October 2014 Average R-GPCD

October 2014-2013 % Reduction





Noteworthy October 2014 Conservation Achievements

- **City of Sacramento**
 - 20% reduction, 466,000 people served
- **Alameda County Water District**
 - 20% reduction, 340,000 people served
- **City of Santa Rosa**
 - 17% reduction, 170,000 people served
- **City of Santa Maria**
 - 22% reduction , 100,000 people served
- **City of Grover Beach**
 - 47% reduction , 64 R-GPCD
- **Redwood City**
 - 38% reduction, 54 R-GPCD
- **Dublin San Ramon Services District**
 - 32% reduction, 70 R-GPCD
- **City of Sonoma**
 - 30% reduction, 123 R-GPCD
- **City of Davis**
 - 23% reduction, 80 R-GPCD



Potential Near-term Actions

- Evaluate and require compliance with mandatory restrictions on outdoor water use
- Outreach to under-performing suppliers
- Work with associations, NGOs, agencies on increased and targeted communication



December 17 workshop in Los Angeles

- Seeking input on next steps for State Water Board Consideration
 - What more can be done to increase conservation?
 - What additional requirements should be considered?
 - What additional data should be collected and how would it be used?
 - How might conservation efforts be bolstered in underperforming areas?

