

Emergency Conservation Regulation Update

Max Gomberg, Rafael Maestu, Mark Emmerson,
Carlos Mejia, Eric Oppenheimer
Office of Research, Planning, and Performance
October 7, 2014



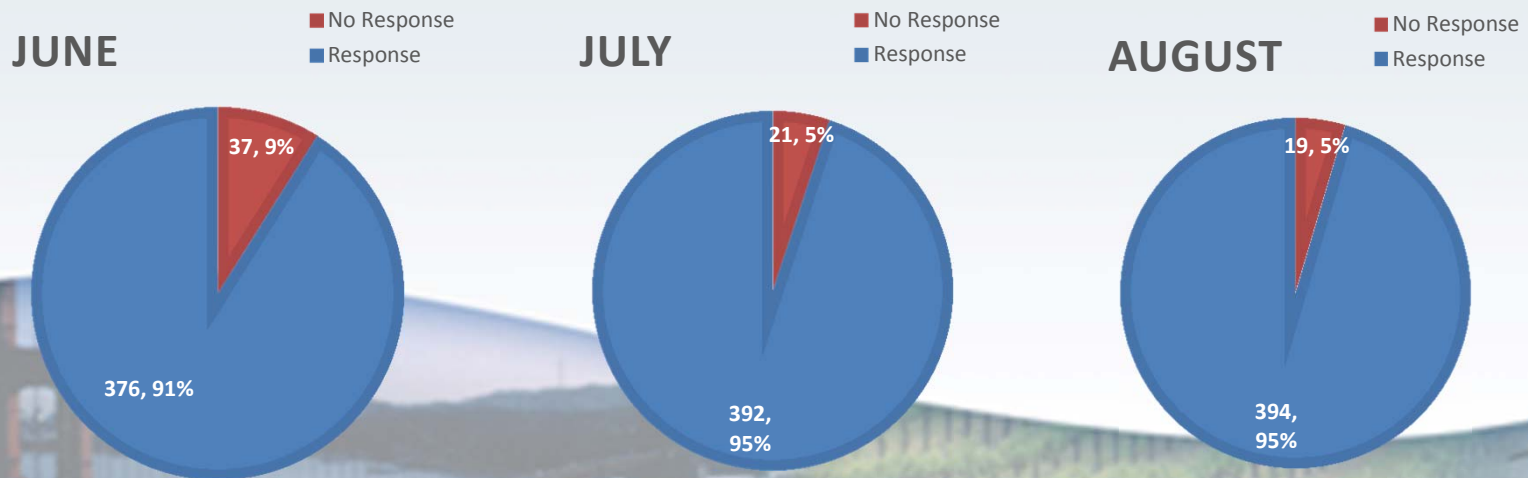
Status of Implementation

- Water production data collected from June, July, & August
- Water Shortage Contingency Plans implemented
- Compliance assessment underway



Data Collection

- 414 Retail Urban Water Suppliers
- 394 provided August production numbers
 - 33.5 million Californians represented
- Staff is contacting all non-reporting water suppliers

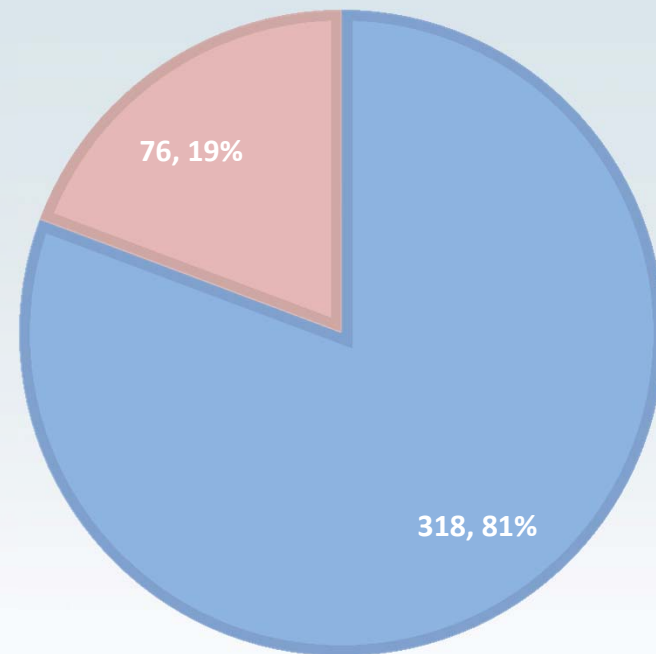


Mandatory Restrictions on Outdoor Water Use

- 81% now implementing mandatory restrictions
- Some Urban Water Suppliers indicated that they are in the process of establishing mandatory restrictions

AUGUST 2014

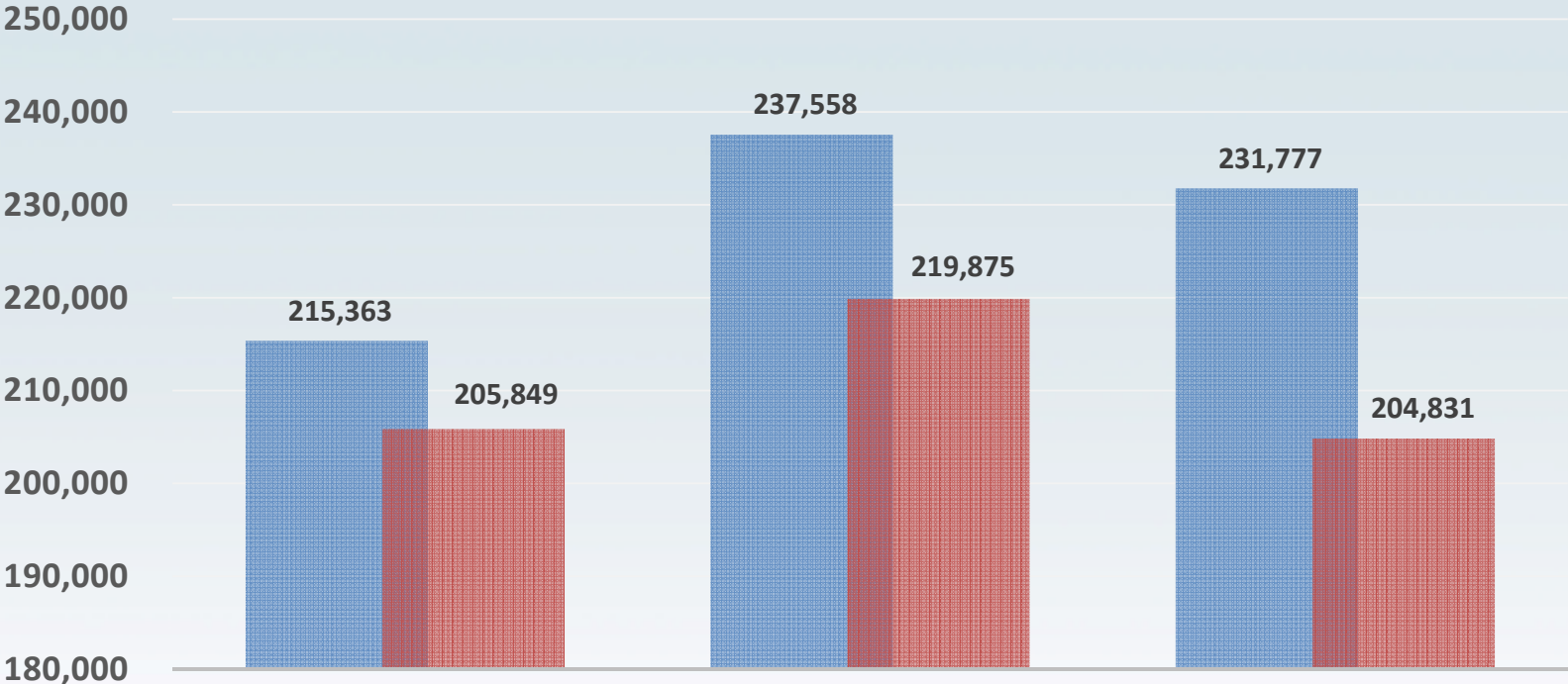
■ Mandatory Restrictions
■ No Mandatory Restrictions



Statewide Water Conservation Results

Water Production June-August (Million Gallons)

2013 2014



June

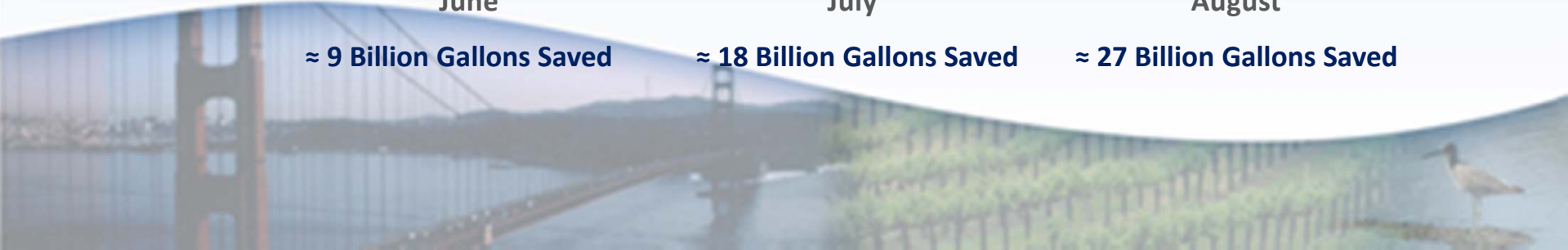
July

August

≈ 9 Billion Gallons Saved

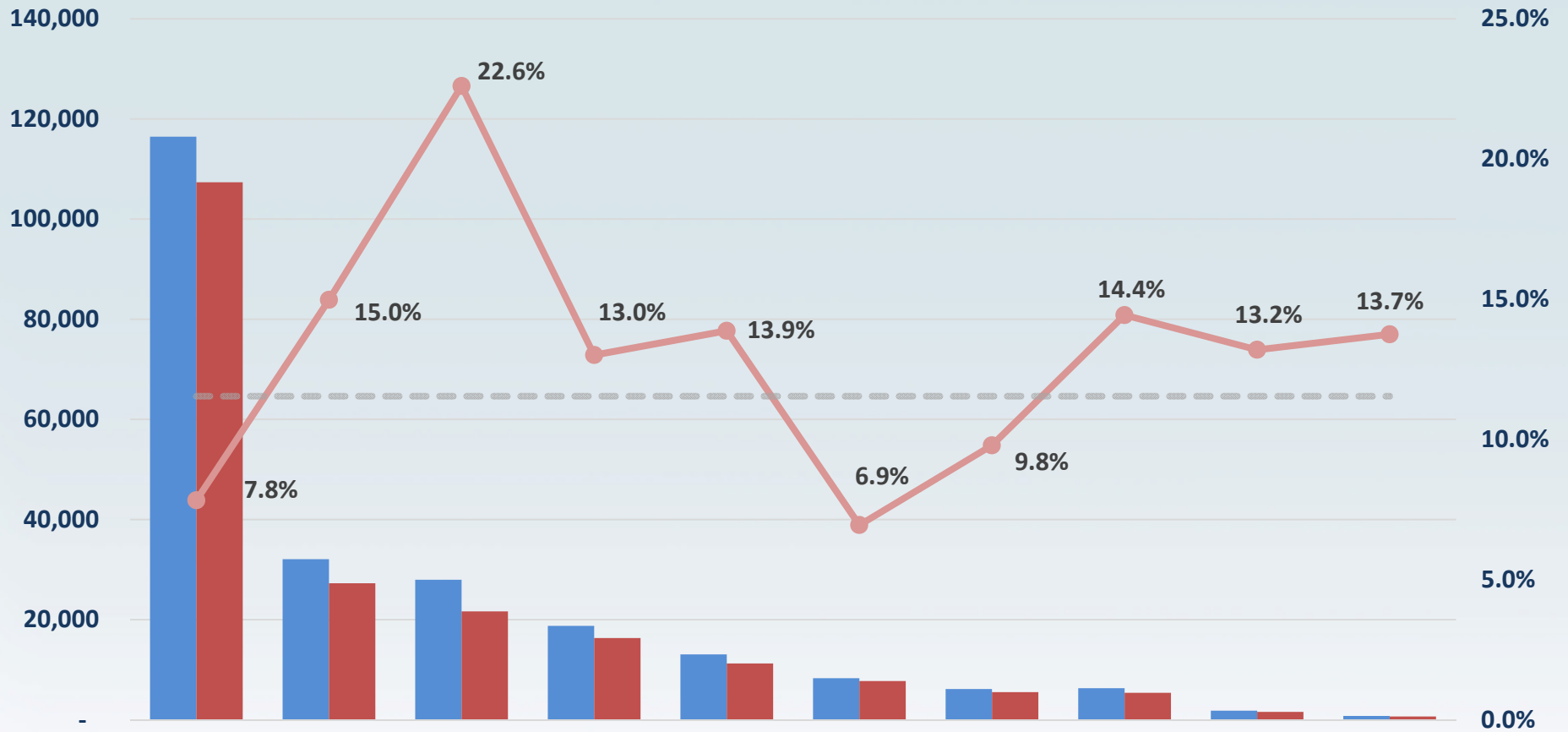
≈ 18 Billion Gallons Saved

≈ 27 Billion Gallons Saved



August Water Production by Hydrologic Region and Percentage Reduction (Million Gallons)

■ Production August 2013
 ■ Production August 2014
 ●— Percentage August Reduction
 - - - State Average August Reduction



South Coast

San Francisco Bay

Sacramento River

Tulare Lake

San Joaquin River

Colorado River

South Lahontan

Central Coast

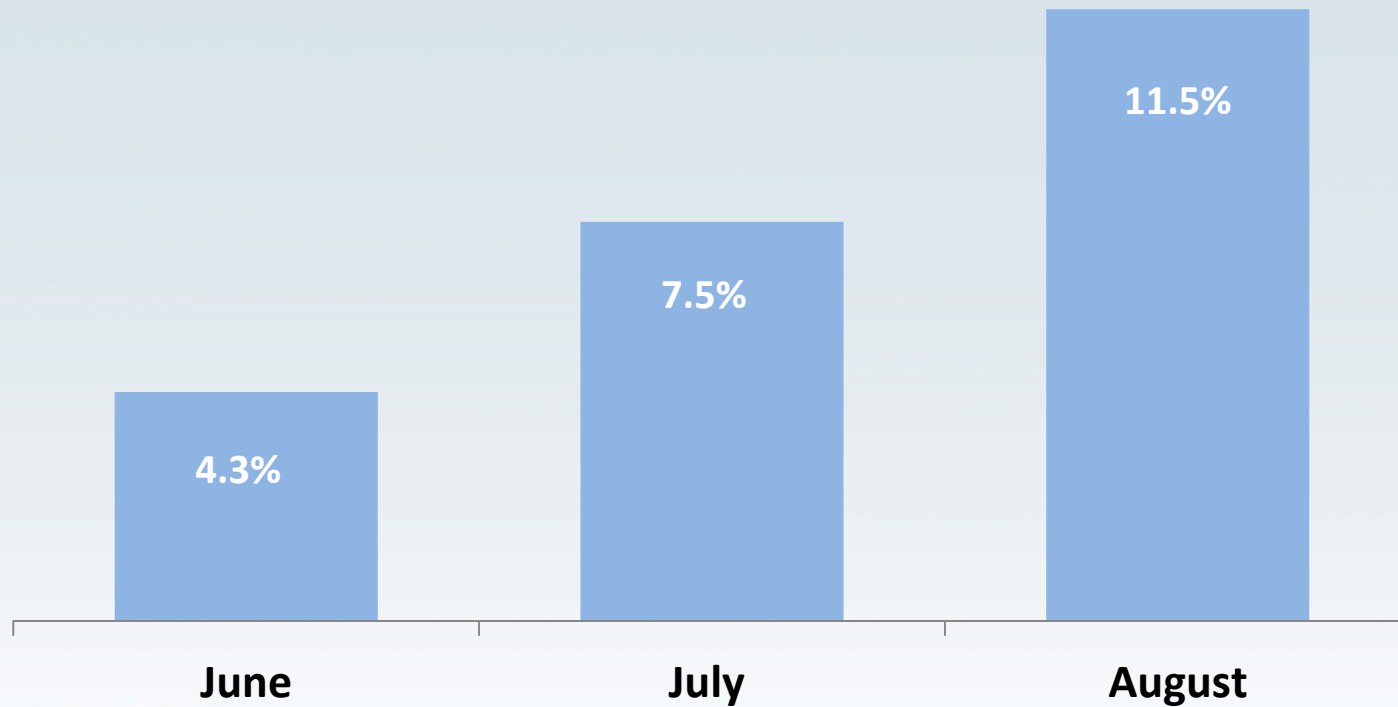
North Coast

North Lahontan



Water Conservation Trend

Water Production Percentage Reduction
(compared to previous year)



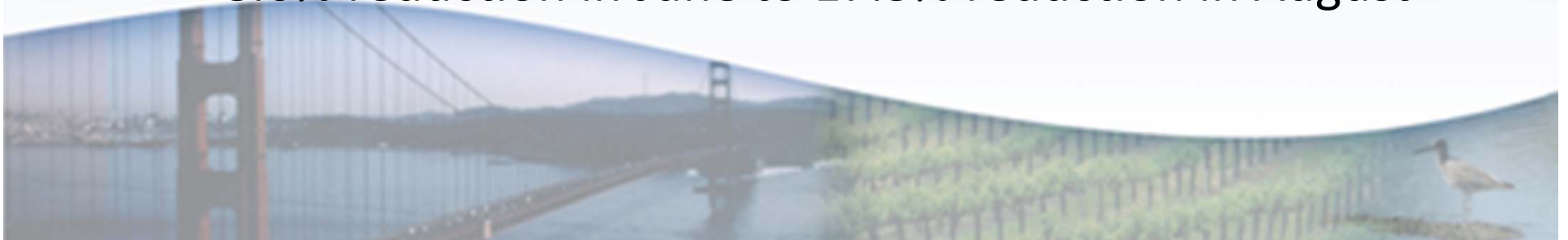
Noteworthy August 2014 Conservation Achievements

- Sacramento Region
 - 19 out of 42 suppliers have August reductions of over 20%
 - Sacramento Regional Water Authority leadership
- City of Tracy
 - 9.6% reduction in June to 41.2% reduction in August
- City of Brawley
 - 26% reduction in July and 40% reduction in August
(includes loss of large customer)



Noteworthy August 2014 Conservation Achievements

- Long Beach Water Department
 - 6.8% August reduction from low baseline
- City of Menlo Park
 - 21% reduction in June to 34% reduction in August
- City of Santa Cruz
 - Rationing and “water school.” 28% reduction in August
- City of Santa Rosa
 - 8.6% reduction in June to 17.3% reduction in August



Metropolitan Water District of Southern California Conservation Program Status

	Reservation Requests	Committed	Paid FY 2014/2015
Rebates Residential	\$4.2M	\$4.2M	\$1.5M
Rebates Commercial	\$10.5M	\$10.5M	\$2.4M
Turf Removal	\$42.9M	\$15.8M	\$825k
Other	\$23.7M	\$6.3M	\$478k
TOTAL	\$81.4M	\$36.8M	\$5.2M

Requests:

Applications requesting funds submitted by customers and member agencies

Committed:

Applications approved to proceed

Compliance and Enforcement

- Water suppliers that have not instituted mandatory restrictions on outdoor use
 - Assess reasons for inaction
 - Initiate progressive enforcement
- Small water systems that have implemented restrictions comparable to limiting outdoor irrigation to two days/week
- Complaints of water waste against residential and commercial customers
 - Contact water supplier



Residential Gallons per Capita per Day

- Requirement to provide R-GPCD estimate begins October 15
- R-GPCD calculation guidance available at:
http://www.swrcb.ca.gov/waterrights/water_issues/programs/drought/docs/ws_tools/guidance_estimate_res_gpcd.pdf
- DWR developed a simplified guidance to estimate water supplier service area population



Residential Gallons per Capita per Day

- R-GPCD evaluation considerations include:
 - Population density
 - Lot size & affluence
 - Evapotranspiration rate
 - Temperature
 - Population fluctuations & growth
- R-GPCD estimate challenges
 - Billing cycles
 - Data availability for non-metered areas
 - Non-revenue water
 - Population



Next Steps

- Analyze R-GPCD submissions
- Initiate progressive enforcement
- Continue to highlight noteworthy programs and results

