

Exhibit CAW-030Y



# California-American Water Company

~~VAW~~  
KDM

Monterey Division  
50 Ragsdale Dr., Suite 100, P.O. Box 951 • Monterey, CA 93942-0951

443-151

October 29, 2001

Mr. Harry Schueller  
Chief, Division of Water Rights  
State Water Resources Control Board  
901 P Street  
Sacramento, CA 95814-2000

RE: SWRCB Order No. WR 95-10  
July - September, 2001 Quarterly Report

Dear Mr. Schueller:

As a condition of the subject order, we are filing herewith our *final quarterly* report for the water year October 1, 2000 through September 30, 2001 updating the status of Condition Nos. 2, 3(a), 4, 5, 6, 7, 8, and 12, including the supporting backup information for each condition.

Enclosed and made part of this report is the *monthly* report required under Condition Nos. 3(b) and 5. Also included are the following:

1. Carmel Valley Wells - Production Water Year
2. Carmel Valley and Seaside Production - Water Year to Date
3. Net System Production - Year to Date
- 4a. Carmel Valley Filter Plant - Monthly reports - Oct. 2000 - Sept. 2001
- b. Carmel Valley Wells - Production - Oct. 2000 - Sept. 2001
5. Water Supply and Budget

Administration  
(831) 646-3201

Customer Service  
(831) 646-3200

Fax  
(831) 375-4367


Exhibit CAW 030Y

10/29/01

Mr. Harry Schueller  
SWRCB Order No. WR 95-10  
July - September Quarterly Report  
October 29, 2001  
Page 2

6. Public Outreach information (Water News: August 2001 and October 2001)

Sincerely,



*for* Judith L. Almond  
Vice President - Operations

JLA/te  
Enclosures

cc: K. Urquardt  
E. Avila  
J. Driscoll, Esq.  
D. Stephenson

D. Laredo, Esq.  
D. Armanasco  
S. Somach, Esq.

F. Farina, Esq.  
P. Ma  
W. Morgan

SWRCB - ORDER NO. WR 95-10  
Quarterly Report - July/September 2001

ORDER CONDITION NO. 2

*Cal-Am shall diligently implement one or more of the following actions to terminate its unlawful diversions from the Carmel River: (1) obtain appropriate permits for water being unlawfully diverted from the Carmel River, (2) obtain water from other sources of supply and make one-for-one reductions in unlawful diversions from the Carmel River, provided that water pumped from the Seaside aquifer shall be governed by Condition 4 of this Order, not this condition, and/or (3) contract with another agency having appropriate rights to divert and use water from the Carmel River.*

**Response No. 2.1:**

Cal-Am continues to pursue acquisition of permits to legalize diversions from the Carmel River. Acquiring the appropriate permits for water rights is embodied in the Draft SEIR - 2 for the Carmel River Dam and Reservoir Project (CRDRP). The environmental review process for the CRDRP project is on hold, as directed by the lead agency (Monterey Peninsula Water Management District) pending the responsible agency's (CPUC) release of the Plan B project description, in the form of recommendation for a preferred resource strategy.

The CPUC issued a draft Plan B Project Report dated August 2001 and conducted the fourth and final public workshop on Plan B components on October 2, 2001. The CPUC Consultants summarized their proposed Plan B water supply. The components are desalination, Seaside Basin storage and recovery, water reclamation and increase in water rights. The proposal provides for an initial increment of water supply of 4,300 AFY comprised of 1,300 AFY from Seaside Basin storage and recovery and 3,000 AFY from increased water rights. The second phase comprises 3,020 AFY from desalination, 2,460 AFY from Seaside Basin storage and recovery, 950 AFY from water reclamation, and none from water rights for a total of 6,430 AFY. The ultimate Plan B water supply comprises 3,020 AFY from desalination, 3,760 AFY from Seaside Basin storage and recovery, 950 from water reclamation, and 3,000 AFY from water rights, for a total of 10,730 AFY.

Although Cal-Am's applications for permits for the right to divert to storage are currently on hold due to pending applications on file for the Monterey Peninsula Water Management District, Cal-Am wishes to activate its permits so that it may more expeditiously explore the potential of obtaining appropriate permits for water diversions from the Carmel River.

ORDER CONDITION NO. 3

*(a) Cal-Am shall develop and implement an urban water conservation plan. In addition, Cal-Am shall develop and implement a water conservation plan based upon best irrigation practices for all parcels with turf and crops of more than one-half acre receiving Carmel River water deliveries from Cal-Am. Documentation that best irrigation practices and*

*urban water conservation have already been implemented may be substituted for plans where applicable.*

- (b) *Urban and irrigation conservation measures shall remain in effect until Cal-Am ceases unlawful diversions from the Carmel River. Conservation measures required by this Order in combination with conservation measures required by the District shall have the goal of achieving 15 percent conservation in the 1996 water year and 20 percent conservation in each subsequent year.<sup>23</sup> To the extent that this requirement conflicts with prior commitments (allocations) by the District, the Chief, Division of Water Rights shall have the authority to modify the conservation requirement. The base for measuring conservation savings shall be 14,106<sup>24</sup> AFA. Water conservation measures required by this order shall not supersede any more stringent water conservation requirement imposed by other agencies.*

**Response No. 3(a):**

Cal-Am's *Urban Water Management Plan* was heard at the January 27, 2000 meeting of the Monterey Peninsula Water Management District. Vote for acceptance of the Plan was unanimous with no public opposition. The plan will be up-dated in 2005.

Cal-Am continues to work with the Monterey Peninsula Water Management District to develop a database of "water budgets" deemed appropriate and necessary usage for Peninsula consumers. This is a requirement of the MPWMD's *Expanded Water Conservation and Standby Water Rationing Plan*.

For the second year, the company produced and distributed a special end of the "Water Year" report to Monterey Peninsula residents. A copy of this paper is enclosed for your information. Monthly newspaper advertising and water bill inserts continue to keep consumers informed on the water situation.

**ORDER CONDITION NO. 3**

- (a) *Cal-Am shall develop and implement an urban water conservation plan. In addition, Cal-Am shall develop and implement a water conservation plan based upon best irrigation practices for all parcels with turf and crops of more than one-half acre receiving Carmel River water deliveries from Cal-Am. Documentation that best irrigation practices and urban water conservation have already been implemented may be substituted for plans where applicable.*
- (b) *Urban and irrigation conservation measures shall remain in effect until Cal-Am ceases unlawful diversions from the Carmel River. Conservation measures required by this Order in combination with conservation measures required by the District shall have the goal of achieving 15 percent conservation in the 1996 water year and 20 percent conservation in each subsequent year.<sup>23</sup> To the extent that this requirement conflicts with prior commitments (allocations) by the District, the Chief, Division of Water Rights shall have the authority to modify the conservation requirement. The base for measuring conservation savings shall be 14,106<sup>24</sup> AFA. Water conservation measures required by this*

10/29/01

*order shall not supersede any more stringent water conservation requirement imposed by other agencies.*

**Response No. 3(b):**

For the water year October, 2000 through September 2001, the established goal for the Carmel Valley was 11,285.0 AF. Actual production for the twelve month period from both surface and well diversions in the Carmel Valley was 10,738.7 AF, or 4.84 percent under goal. The overall production, including Carmel Valley and the Seaside Basin was 14,573.1 AF, or 4.66 percent under the total twelve month system goal of 15,285.0 AF.

**ORDER CONDITION NO. 4**

*Cal-Am shall maximize production from the Seaside aquifer for the purpose of serving existing connections, honoring existing commitments (allocations), and to reduce diversions from the Carmel River to the greatest practicable extent. The long-term yield of the basin shall be maintained by using the practical rate of withdrawal method.*

**Response No. 4:**

During the water year October 2000 through September 2001, Cal-Am extracted 3,834.4 AF from the Seaside Basin. The plan is to maximize Seaside extractions up to a limit of 4000 AF. Cal-Am's management of Seaside Basin extractions is based on the Memo of Agreement between the MPWMD, Cal-Am and California Department of Fish and Game. The agreement includes the relaxation of production from the Seaside Basin during the winter months to allow recharge and maximization of production during the summer months to reduce impacts of water production on the Carmel Valley basin. Cal-Am will continue this water management plan, which will assist in maintaining the production goal limits for the Carmel Valley Basin and with the continuation of river flows to the Lagoon.

In April 2001, US Fish & Wildlife Service and Cal-Am executed the First Amended Agreement for protection of the California Red-legged frog for Cal-Am's Carmel Valley operations. The Agreement states that, provided that Cal-Am complies with its terms and the attached Biological Opinion, incidental take of California Red-legged frog shall be exempt from the take prohibitions of Section 9 of the Endangered Species Act.

During the past quarter, Cal-Am has met with National Marine Fisheries Service several times to address operational issues that may affect habitat of the steelhead trout.

**ORDER CONDITION NO. 5**

*Cal-Am shall satisfy the water demands of its customers by extracting water from its most downstream wells to the maximum practicable extent, without degrading water quality or significantly affecting the operation of other wells.*

**Response No. 5:**

Cal-Am is including in this final water year quarterly report the monthly production data for September 2001 from specific sub-units in the Carmel Valley via Carmel Valley wells. Carmel Valley Filter Plant produced 0.2 AF, with 52.4 AF from Aquifers No. 1 and No. 2; Water West - 0.0 AF; Aquifer No. 3 - 535.5 AF; Aquifer No. 4 - 219.2 AF. Total production for the month of September was 807.3 AF.

On September 18, 2001, the National Marine Fisheries Service ("NMFS") and Cal-Am entered into a Conservation Agreement dealing with steelhead in the Carmel River, California. The State Board has been provided with a copy of this agreement. The agreement has modified Cal-Am's operation of the upper Carmel Valley wells in a manner that is consistent with Order Condition no. 5. In past years, operation of the upper Carmel Valley wells has been limited during the months of May through December. The Conservation Agreement changes the trigger for reducing operation of upper Carmel Valley Wells from specific months to "low flow periods", defined as times when stream flow in the Carmel River at the Don Juan Bridge (RM 10.8) gage is less than 20 cfs for five consecutive days. Cal-Am has agreed to install a pump that delivers water from the Begonia zone to the Carmel Valley Village by the end of March, 2002. Pending the installation of that pump, during low flow periods, Cal-Am has ceased diversions from San Clemente Reservoir, is pumping from Russell Wells 2 and 4, and has limited its pumping of the other upper Carmel Valley Wells to a schedule of maintenance pumping, which is set forth below. The maintenance pumping schedule and the complete cessation of diversions from San Clemente Reservoir are being monitored and evaluated by NMFS and Cal-Am and are subject to adjustment in order to satisfy the needs of Cal-Am's customers and the needs of the steelhead. Once the pump is installed, production from the Russell Wells will be limited to 0.5 cfs and the majority of Carmel Valley Village demand will be met by pumping water from the Begonia zone, which includes water well production facilities in AQ 3, AQ 4 and the Seaside Groundwater Basin. This mode of operation will be evaluated during the period of January through December, 2002 to address the adequacy of Cal-Am's distribution system and the new pump to accommodate the water supply needs of the Carmel Valley Village from the Begonia Zone.

Status of wells:

**Lower Carmel Valley Wells**

Rancho Canada - On Line  
San Carlos - On Line  
Cypress - On Line  
Pearce - On Line  
Schulte - On Line  
Manor - On Line  
Begonia #2 - On Line  
Berwick #7 - Out of Service for rehabilitation until further notice.  
Berwick #8 - On Line

Upper Carmel Valley Wells

All upper wells are in "low flow" use pattern.

Panetta 2 - Off Line (run 8hrs/day for 1 to 2 days per month for maintenance)  
 Panetta 4 - Off Line (run 8hrs/day for 1 to 2 days per month for maintenance)  
 Garzas 3 - Off Line (run 8hrs/day for 1 to 2 days per month for maintenance)  
 Garzas 4 - Off Line (run 8hrs/day for 1 to 2 days per month for maintenance)  
 Los Laureles 5 - Off Line (run 1 to 2 hours once a week for maintenance)  
 Los Laureles 6 - Off Line (run 1 to 2 hours once a week for maintenance)  
 Scarlett 8 - Off Line (run 1 to 2 hours once a week for maintenance)  
 Robles - Off Line (run 1 to 2 hours once a week for maintenance)  
 Russell 2 - On Line  
 Russell 4 - On Line

**ORDER CONDITION NO. 6**

*Cal-Am shall conduct a reconnaissance level study of the feasibility, benefits, and costs of supplying water to the Carmel Valley Village Filter Plant from its more nearby wells downstream of the plant. The objective of supplying water from the wells is to maintain surface flow in the stream as far downstream as possible by releasing water from San Clemente Dam for maintenance of fish habitat. The results of the study and recommendations shall be provided to the District and DF&G for comment.*

**Response No. 6:**

In accordance with the terms of Order Nos. 95-10 and 98-04, two studies were done. The first was completed and submitted to the State Board in September, 1996 and the Reconnaissance-Level Feasibility Study of the Operational Reconfiguration of Lower Carmel Valley Wells was completed and was submitted to the State Board on June 21, 1999. In April, 2001, the State Board issued Order 2001-04 in which it found these studies adequate. A hearing on Order 2001-04 was conducted on September 17 and 18, 2001. Some participants argued that the studies were incomplete. The State Board has not issued its decision yet.

**ORDER CONDITION NO. 7**

*Cal-Am shall evaluate the feasibility of bypassing early storm runoff at Los Padres and San Clemente Dams to recharge the subterranean stream below San Clemente Dam in order to restore surface water flows in the river at an earlier date. The results of the study and recommendations shall be provided to the District and CDF&G for comment.*

**Response No. 7:**

Cal-Am hired Entrix to finalize the subject studies. The completed studies were mailed to the SWRCB on July 5, 2000.



**ORDER CONDITION NO. 8**

*Cal-Am shall conduct a study of the feasibility, benefits, and costs of modifying critical stream reaches to facilitate the passage of fish. The study shall be designed and carried out in consultation with DF&G and the District. The results of the study and recommendations shall be provided to the district and DF&G for comment.*

**Response No. 8:**

Cal-Am hired Entrix to finalize the subject studies. The completed studies were mailed to the SWRCB on July 5, 2000.

**ORDER CONDITION NO. 12**

*Within 90 days of the date of this order, Cal-Am shall submit for the approval of the Chief, Division of Water Rights:*

- (a) A compliance plan detailing the specific actions which will be taken to comply with condition 2 and the dates by which those action will be accomplished;*
- (b) An urban water conservation plan;*
- (c) An irrigation management plan.*

**Response 12(a):**

We have been informed by the Monterey Peninsula Water Management District (MPWMD) that the new anticipated date for release of the Draft SEIR-2 for the Carmel River Dam and Reservoir Project for public comment will be in the third quarter of 2002.

Plan B, the alternative being developed by the California Public Utilities Commission as a result of legislation passed by Assemblyman Keeley (AB 1182), is in progress. The CPUC issued a draft Plan B Project Report dated August 2001 and conducted the fourth and final public workshops on Plan B components on October 2, 2001. The CPUC Consultants summarized their proposed Plan B water supply. The components are desalination, Seaside Basin storage and recovery, water reclamation and increase in water rights. The proposal provides for an initial increment of water supply of 4,300 AFY comprised of 1,300 AFY from Seaside Basin storage and recovery and 3,000 AFY from increased water rights. The second phase comprises 3,020 AFY from desalination, 2,460 AFY from Seaside Basin storage and recovery, 950 AFY from water reclamation, and none from water rights for a total of 6,430 AFY. The ultimate Plan B water supply comprises 3,020 AFY from desalination, 3,760 AFY from Seaside Basin storage and recovery, 950 from water reclamation, and 3,000 AFY from water rights, for a total of 10,730 AFY.

Although Cal-Am's applications for permits for the right to divert to storage are currently on hold due to pending applications on file for the Monterey Peninsula Water Management District, Cal-

10/29/01

Am wishes to activate its permits so that it may more expeditiously explore the potential of obtaining appropriate permits for water diversions from the Carmel River.

**SUPPORTING DOCUMENTS**

**SWRCB ORDER NO. WR 95-10  
FINAL REPORT FOR WATER YEAR  
OCTOBER 2000 – SEPTEMBER 2001**

**JULY/SEPTEMBER 2001**

CALIFORNIA-AMERICAN WATER COMPANY  
 Monterey Division 443  
 S.C. DAM & CARMEL VALLEY WELLS  
 Production Water Year (AF)  
 2000-01

Date	CVFP San Clemente Dam	Aquifer 1 Russell 1 & 4	Aquifer 2 Robles Los Laureles 5 & 6	Water West Pamela 1 & 2 Garza 3 & 4	Aquifer 3 Scarlet/Banck 7 & 8 Bepores/Monor/Schulte Peares/Cypress/San Carlos	Aquifer 4 Reno Canada	Total Production	BIRP Backwash	Net Production
Oct 2000	3.9	65.6	0.0	8.7	472.4	20.1	754.7	0.5	755.2
Oct 1999	32.0	77.8	0.0	11.1	479.6	224.2	824.7	(1.1)	823.6
Nov 2000	0.0	62.5	0.0	2.4	402.6	189.6	657.1	(0.1)	657.0
Nov 1999	7.3	68.6	0.0	11.0	346.9	225.8	659.6	(2.6)	657.0
Dec 2000	0.0	56.8	0.0	0.0	372.6	204.9	534.3	(1.1)	633.2
Dec 1999	15.0	80.2	0.0	10.7	346.4	240.6	692.9	0.1	693.0
Jan 2001	7.0	74.6	0.0	1.8	654.9	183.7	922.2	1.4	923.6
Jan 2000	21.8	70.7	0.0	4.8	601.6	205.3	904.2	(1.0)	903.2
Feb 2001	3.5	66.4	0.0	0.0	546.0	167.6	786.5	0.4	786.9
Feb 2000	24.2	55.5	0.0	32.4	685.7	45.0	842.8	(0.1)	842.7
Mar 2001	0.4	47.1	0.0	0.0	779.2	107.3	886.6	1.4	888.0
Mar 2000	25.5	70.7	0.0	36.2	875.1	0.0	1,007.5	(0.6)	1,006.9
Apr 2001	5.7	73.7	0.0	0.0	900.9	51.6	1,033.8	2.1	1,035.9
Apr 2000	35.2	80.8	0.0	34.6	1,070.1	0.1	1,220.8	(0.0)	1,220.8
May 2001	57.9	84.7	0.0	0.0	960.2	65.9	1,168.7	3.3	1,169.0
May 2000	33.3	83.2	0.0	21.2	1,001.4	1.9	1,141.0	(1.4)	1,139.6
Jun 2001	16.3	72.4	0.0	1.1	785.1	160.6	1,015.7	0.9	1,016.6
Jun 2000	29.9	77.6	0.0	2.6	714.9	133.8	958.8	(0.3)	958.5
Jul 2001	0.8	71.3	0.0	9.6	707.1	224.5	1,013.4	0.5	1,013.9
Jul 2000	14.4	82.6	0.0	11.1	705.3	158.9	972.3	(1.2)	971.1
Aug 2001	0.4	70.0	0.0	8.0	721.3	201.2	1,000.6	1.8	1,002.7
Aug 2000	10.1	80.4	0.0	10.5	718.4	197.3	1,016.7	(1.2)	1,015.5
Sep 2001	0.2	52.4	0.0	0.0	535.5	219.2	807.3	0.1	807.4
Sep 2000	11.4	78.1	0.0	10.9	654.5	191.7	946.6	0.0	946.6
<b>Total</b>	<b>96.1</b>	<b>803.7</b>	<b>0.0</b>	<b>31.6</b>	<b>7,819.8</b>	<b>1,979.3</b>	<b>10,730.5</b>	<b>8.2</b>	<b>10,738.7</b>

California-American Water Company  
 Monterey Division  
 Carmel Valley & Seaside Production  
 Water Year to Date 00-01

Month		San Clemente Dam Surface Water	U. Carmel Valley Wells	L. Carmel Valley Wells	Seaside Wells	TOTAL
02/01	CF	151,749	3,027,129	31,186,395	0	34,365,273
	1000 G	1,135	22,644	233,290	0	257,070
	AF	3.48	69.49	715.94	0.00	788.92
* 20.6 AF for Seaside Pilot Injection Well deducted for Jan 01						
W-Y-T-D	CF	626,210	15,034,673	148,035,175	45,487,877	209,183,935
	1000 G	4,684	112,467	1,107,380	340,273	1,564,805
	AF	14.38	345.15	3398.42	1044.26	4,802.20
03/01	CF	18,413	2,052,860	38,672,713	10	40,743,996
	1000 G	138	15,356	289,292	0	304,786
	AF	0.42	47.13	887.80	0.00	935.35
W-Y-T-D	CF	644,623	17,087,533	186,707,888	45,487,887	249,927,931
	1000 G	4,822	127,824	1,396,672	340,273	1,869,591
	AF	14.80	392.28	4,286.22	1,044.26	5,737.56
04/01	CF	247,593	3,208,620	41,666,549	10	45,122,772
	1000 G	1,852	24,002	311,688	0	337,542
	AF	5.68	73.66	956.53	0.00	1,035.88
W-Y-T-D	CF	892,216	20,296,153	228,374,437	45,487,897	295,050,703
	1000 G	6,674	151,826	1,708,360	340,273	2,207,133
	AF	20.48	465.94	5,242.76	1,044.26	6,773.43
05/01	CF	2,522,034	3,688,530	44,702,414	11,676,830	62,589,808
	1000 G	18,866	27,592	334,397	87,349	468,204
	AF	57.90	84.68	1,026.23	268.06	1,436.86
W-Y-T-D	CF	3,414,250	23,984,683	273,076,851	57,164,727	357,640,511
	1000 G	25,540	179,418	2,042,757	427,622	2,675,338
	AF	78.38	550.61	6,268.98	1,312.32	8,210.30

California-American Water Company  
 Monterey Division  
 Carmel Valley & Seaside Production  
 Water Year to Date 00-01

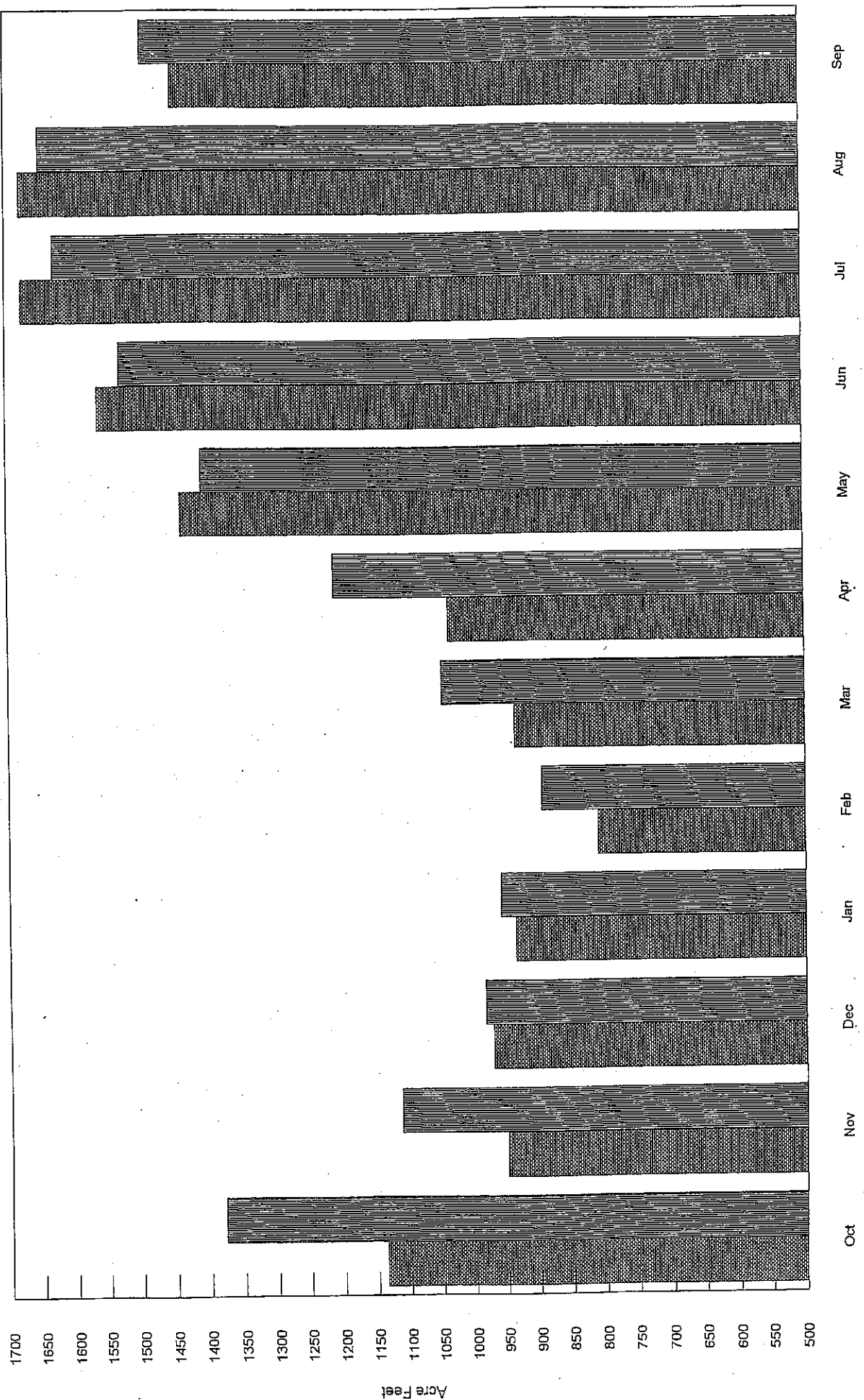
Month		San Clemente Dam Surface Water	U. Carmel Valley Wells	L. Carmel Valley Wells	Seaside Wells	TOTAL
06/01	CF	710,529	3,205,024	40,365,966	23,702,358	67,983,877
	1000 G	5,315	23,975	301,958	177,306	508,555
	AF	16.31	73.58	926.68	544.13	1,560.70
W-Y-T-D	CF	4,124,779	27,189,707	313,442,817	80,867,085	425,624,388
	1000 G	30,855	203,393	2,344,716	604,928	3,183,892
	AF	94.69	624.19	7,195.66	1,856.45	9,770.99
07/01	CF	36,542	3,527,066	40,602,147	28,880,013	73,045,768
	1000 G	273	26,384	303,725	216,038	546,420
	AF	0.84	80.97	932.10	662.99	1,676.90
W-Y-T-D	CF	4,161,321	30,716,773	354,044,964	109,747,098	498,670,156
	1000 G	31,129	229,777	2,648,441	820,965	3,730,313
	AF	95.53	705.16	8,127.75	2,519.45	11,447.89
08/01	CF	16,103	3,397,126	40,263,796	29,441,060	73,118,085
	1000 G	120	25,412	301,194	220,234	546,961
	AF	0.37	77.99	924.33	675.87	1,678.56
W-Y-T-D	CF	4,177,424	34,113,899	394,308,760	139,188,158	571,788,241
	1000 G	31,249	255,190	2,949,635	1,041,200	4,277,274
	AF	95.90	783.15	9,052.08	3,195.32	13,126.45
09/01	CF	8,427	2,280,316	32,882,181	27,844,979	63,015,903
	1000 G	63	17,058	245,976	206,295	471,392
	AF	0.19	52.35	754.87	639.23	1,446.65
W-Y-T-D	CF	4,185,851	36,394,215	427,190,941	167,033,137	634,804,144
	1000 G	31,312	272,248	3,195,611	1,249,495	4,748,666
	AF	96.09	835.50	9,806.95	3,834.55	14,573.10

California-American Water Company  
 Monterey Division  
 Carmel Valley & Seaside Production  
 Water Year to Date 00-01

Month		San Clemente Dam Surface Water	U. Carmel Valley Wells	L. Carmel Valley Wells	Seaside Wells	TOTAL
10/00	CF	168,809	3,371,879	29,355,841	16,575,540	49,472,069
	1000 G	1,263	25,223	219,597	123,994	370,077
	AF	3.88	77.41	673.92	380.52	1,135.72
W-Y-T-D	CF	168,809	3,371,879	29,355,841	16,575,540	49,472,069
	1000 G	1,263	25,223	219,597	123,994	370,077
	AF	3.88	77.41	673.92	380.52	1,135.72
11/00	CF	0	2,829,616	25,788,882	12,762,292	41,380,790
	1000 G	0	21,167	192,914	95,469	309,550
	AF	0.00	64.96	592.03	292.98	949.97
W-Y-T-D	CF	168,809	6,201,495	55,144,723	29,337,832	90,852,859
	1000 G	1,263	46,390	412,511	219,462	679,627
	AF	3.88	142.37	1,265.95	673.50	2,085.69
12/00	CF	0	2,474,776	25,108,586	14,770,920	42,354,282
	1000 G	0	18,513	187,825	110,494	316,832
	AF	0.00	56.81	576.41	339.09	972.32
W-Y-T-D	CF	168,809	8,676,271	80,253,309	44,108,752	133,207,141
	1000 G	1,263	64,903	600,336	329,956	996,459
	AF	3.88	199.18	1,842.36	1,012.60	3,058.02
01/01	CF	305,652	3,331,273	36,595,471	1,379,125	41,611,521
	1000 G	2,286	24,920	273,753	10,317	311,276
	AF	7.02	76.48	840.12	31.66	955.27
W-Y-T-D	CF	474,461	12,007,544	116,848,780	45,487,877	174,818,662
	1000 G	3,549	89,823	874,090	340,273	1,307,734
	AF	10.89	275.66	2,682.48	1,044.26	4,013.28

# CARMEL VALLEY & SEASIDE PRODUCTION

2000-01 Water Year



2000-01  
 Goal

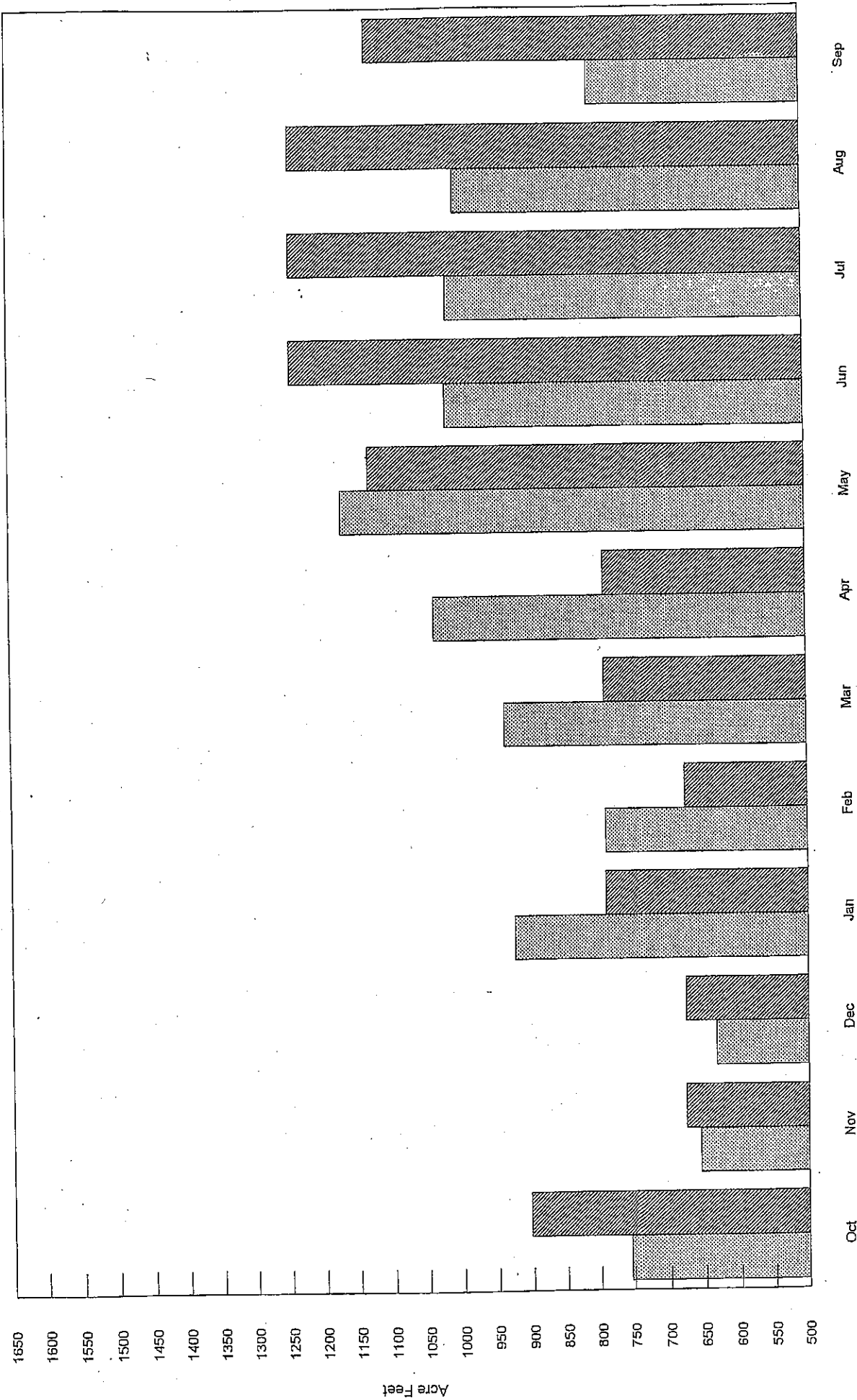


CARMEL VALLEY & SEASIDE PRODUCTION  
 2000-01 Water Year

	2000-01	Goal
Oct	1,136	1,379
Nov	950	1,113
Dec	972	984
Jan	935	958
Feb	810	894
Mar	935	1,047
Apr	1,036	1,209
May	1,437	1,405
Jun	1,561	1,527
Jul	1,677	1,628
Aug	1,679	1,649
Sep	1,447	1,492
Total (AF)	14,573	15,285

# S. C. DAM & CARMEL VALLEY WELLS

Production Water Year



2000-01  
 Target

**S. C. DAM & CARMEL VALLEY WELLS**  
 Production Water Year

	2000-01	Target
Oct	755	903
Nov	657	677
Dec	633	677
Jan	924	790
Feb	789	677
Mar	935	790
Apr	1,036	790
May	1,169	1,129
Jun	1,017	1,241
Jul	1,014	1,241
Aug	1,003	1,241
Sep	807	1,129
<b>Total (AF)</b>	<b>10,739</b>	<b>11,285</b>

California-American Water Company  
 Monterey Division  
 Net System Production  
 Year to Date 2001

Month	San Clemente Dam Surface Water	U. Carmel Valley Wells	L. Carmel Valley Wells	Seaside Wells	Ryan Ranch Wells	Hidden Hills Wells	Bishop Wells	Ambler Wells	NET SYSTEM (All Facilities)	Net System (CV & Seaside)
09/01	8,427	2,280,316	52,882,181	97,844,979	414,584	864,851	638,338	1,207,145	66,450,682	
10/00	63	17,058	245,976	288,295	3,101	7,307	6,421	9,030	497,311	
01/01	0.19	52,300	754,910	639,233	9,522	22,611	19,711	27,711	1,525,171	1,445,622
Y-T-D	4,017,042	27,717,944	346,937,632	122,924,385	2,578,726	7,243,403	5,647,792	9,083,582	526,150,506	
1000 G	30,049	207,344	2,595,274	919,538	19,291	54,185	42,249	67,950	3,935,880	
AF	92.22	636.29	7,964.62	2,821.96	59.20	166.29	129.66	208.53	12,078.76	11,515.08

California-American Water Company  
 Monterey Division  
 Net System Production  
 Year to Date 2001

Month	San Clemente Dam Surface Water	U. Carmel Valley Wells	L. Carmel Valley Wells	Seaside Wells	Ryan Ranch Wells	Hidden Hills Wells	Bishop Wells	Ambler Wells	NET SYSTEM (All Facilities)	Net System (CV & Seaside)
05/01	CF 2,522,034 18,866 57.90	3,688,530 27,592 84.68	44,702,414 334,397 1,026.20	11,676,830 87,349 268.06	307,291 2,299 7.05	1,012,098 7,571 23.23	681,128 5,095 15.64	1,274,871 9,537 29.27	65,865,196 492,706 1,512.04	1,436.84
Y-T-D	CF 3,245,441 1000 G 24,278 74.51	15,308,412 114,515 351.44	192,823,542 1,442,421 4,426.59	13,055,975 97,665 299.72	1,062,077 7,946 24.38	2,991,402 22,377 68.67	2,126,492 15,907 48.82	3,579,113 26,774 82.17	234,192,454 1,751,883 5,376.30	5,152.26
06/01	CF 710,529 1000 G 5,315 16.31	3,205,024 23,975 73.60	40,365,966 301,958 926.70	23,702,358 177,306 544.13	325,449 2,435 7.47	1,089,333 8,149 25.01	805,506 6,026 18.49	1,394,768 10,434 32.02	71,598,933 535,598 1,643.73	1,560.74
Y-T-D	CF 3,955,970 1000 G 29,593 90.82	18,513,436 138,490 425.04	233,189,508 1,744,379 5,353.29	36,758,333 274,971 843.86	1,387,526 10,381 31.85	4,080,735 30,526 93.68	2,931,998 21,933 67.31	4,973,881 37,208 114.18	305,791,387 2,287,481 7,020.03	6,713.00
07/01	CF 36,542 1000 G 273 0.84	3,527,066 26,384 80.97	40,602,147 303,725 932.10	28,880,013 216,038 662.99	361,142 2,702 8.29	1,084,468 8,112 24.90	919,085 6,875 21.10	1,470,335 10,999 33.75	76,880,798 575,108 1,764.94	1,676.90
Y-T-D	CF 3,992,512 1000 G 29,866 91.66	22,040,502 164,874 506.01	273,791,655 2,048,104 6,285.39	65,638,346 491,009 1,506.85	1,748,668 13,082 40.14	5,165,203 38,639 118.58	3,851,083 28,808 88.41	6,444,216 48,206 147.94	382,672,185 2,862,588 8,784.97	8,389.90
08/01	CF 16,103 1000 G 120 0.37	3,397,126 25,412 77.99	40,263,796 301,194 924.33	29,441,060 220,234 675.87	415,474 3,108 9.54	1,093,349 8,179 25.10	938,311 7,019 21.54	1,432,220 10,714 32.88	76,997,439 575,981 1,767.62	1,678.56
Y-T-D	CF 4,008,615 1000 G 29,986 92.03	25,437,628 190,286 583.99	314,055,451 2,349,298 7,209.72	95,079,406 711,243 2,182.72	2,164,142 16,190 49.68	6,258,552 46,817 143.68	4,789,394 35,828 109.95	7,876,436 58,920 180.82	459,669,624 3,438,569 10,552.59	10,068.46

California-American Water Company  
 Monterey Division  
 Net System Production  
 Year to Date 2001

Month	San Clemente Dam Surface Water	U. Carmel Valley Wells	L. Carmel Valley Wells	Seaside Wells	Ryan Ranch Wells	Hidden Hills Wells	Bishop Wells	Ambler Wells	NET SYSTEM (All Facilities)	Net System (CV & Seaside)
01/01	CF 305,652 1000 G 2,286 AF 7.02	3,331,273 24,920 76.48	36,595,471 273,753 840.12	1,379,125 10,317 31.66	173,882 1,301 3.99	493,670 3,693 11.33	409,063 3,060 9.39	495,467 3,706 11.37	43,183,603 323,036 991.36	955.27
Y-T-D	CF 305,652 1000 G 2,286 AF 7.02	3,331,273 24,920 76.48	36,595,471 273,753 840.12	1,379,125 10,317 31.66	173,882 1,301 3.99	493,670 3,693 11.33	409,063 3,060 9.39	495,467 3,706 11.37	43,183,603 323,036 991.36	955.27
02/01	CF 151,749 1000 G 1,135 AF 3.48	3,027,129 22,644 69.49	31,186,395 233,290 715.94	0 0 0.00	129,574 970 2.97	357,568 2,675 8.21	245,443 1,836 5.63	397,800 2,976 9.13	35,495,658 265,527 814.87	788.92
Y-T-D	CF 457,401 1000 G 3,422 AF 10.50	6,358,402 47,564 145.97	67,781,866 507,044 1,556.06	1,379,125 10,317 31.66	303,456 2,271 6.97	851,238 6,368 19.54	654,506 4,896 15.03	893,267 6,682 20.51	78,679,261 588,563 1,806.23	1,744.19
03/01	CF 18,413 1000 G 138 AF 0.42	2,052,860 15,356 47.13	38,672,713 289,292 887.80	10 0 0.00	208,356 1,559 4.78	501,467 3,751 11.51	351,636 2,630 8.07	588,951 4,406 13.52	42,394,406 317,132 973.24	935.35
Y-T-D	CF 475,814 1000 G 3,559 AF 10.92	8,411,262 62,921 193.10	106,454,579 796,336 2,443.86	1,379,135 10,317 31.66	511,812 3,829 11.75	1,352,705 10,119 31.05	1,006,142 7,526 23.10	1,482,218 11,088 34.03	121,073,667 905,695 2,779.47	2,679.54
04/01	CF 247,593 1000 G 1,852 AF 5.68	3,208,620 24,002 73.66	41,666,549 311,688 956.53	10 0 0.00	242,974 1,818 5.58	626,599 4,687 14.38	439,222 3,286 10.08	822,024 6,149 18.87	47,253,591 353,482 1,084.79	1,035.88
Y-T-D	CF 723,407 1000 G 5,411 AF 16.6	11,619,882 86,923 266.8	148,121,128 1,108,024 3,400.4	1,379,145 10,317 31.7	754,786 5,647 17.3	1,979,304 14,806 45.4	1,445,364 10,812 33.2	2,304,242 17,237 52.9	168,327,258 1,259,177 3,864.3	3,715.4

CALIFORNIA-AMERICAN WATER COMPANY  
 Monterey Division 443  
 CVFP Daily Production Report  
 September 2001

Date	Gravity		Low Flow		Russell #2	Russell #4	To Carmel River		Wells 2 & 4		Diversion (Less Russell)		Backwash		NET DIVERSION TO SYSTEM			To the River	
	CF		CF				CF	CF	AF	CF	AF	CF	AF	CF	AF	CF	AF	1000 Gal.	CF
1	0		114,118		79,020	34,420	(14,245)	99,195	14,923	112	0.3	14,923	0	0.3	0	0	0	0.00	(0.16)
2	0		99,367		78,990	34,430	(23,405)	90,015	9,352	70	0.2	9,352	0	0.2	0	0	0	0.00	(0.27)
3	0		116,191		78,910	34,250	0	113,160	3,031	23	0.1	3,031	0	0.0	0	23	0.07	0.00	
4	0		98,141		78,960	34,170	(14,989)	98,141	0	0	0.0	0	0	0.0	0	0	0.00	(0.17)	
5	0		94,233		78,980	34,080	(18,827)	94,233	0	0	0.0	0	0	0.0	0	0	0.00	(0.22)	
6	0		99,349		78,930	34,670	(34,153)	79,447	19,902	149	0.5	19,902	0	0.5	0	0	0.00	(0.40)	
7	0		87,869		78,910	34,800	(37,514)	76,196	11,673	87	0.3	11,673	0	0.3	0	0	0.00	(0.43)	
8	0		83,008		78,850	34,810	(30,830)	82,830	178	1	0.0	178	0	0.0	0	0	0.00	(0.36)	
9	0		75,746		78,820	34,580	(37,654)	75,746	0	0	0.0	0	0	0.0	0	0	0.00	(0.44)	
10	0		76,507		78,780	34,960	(37,233)	76,507	0	0	0.0	0	0	0.0	0	0	0.00	(0.43)	
11	0		70,852		78,780	34,500	(61,741)	51,539	19,313	144	0.4	19,313	0	0.4	0	0	0.00	(0.71)	
12	0		68,839		78,770	34,960	(41,865)	71,865	639	5	0.0	639	0	0.0	0	0	0.00	(0.48)	
13	0		72,902		78,740	34,920	(44,821)	68,839	0	0	0.0	0	0	0.0	0	0	0.00	(0.47)	
14	0		76,699		78,740	34,840	(40,598)	72,902	0	0	0.0	0	0	0.0	0	0	0.00	(0.43)	
15	0		76,696		78,780	33,850	(36,901)	76,699	17,419	130	0.4	17,419	0	0.4	0	0	0.00	(0.62)	
16	0		69,931		78,790	34,730	(53,965)	59,277	10,376	78	0.2	10,376	0	0.2	0	0	0.00	(0.49)	
17	0		71,066		78,670	34,820	(42,514)	71,066	0	0	0.0	0	0	0.0	0	0	0.00	(0.46)	
18	0		73,755		78,630	35,150	(40,025)	73,755	0	0	0.0	0	0	0.0	0	0	0.00	(0.50)	
19	0		70,699		78,670	35,100	(43,111)	70,699	0	0	0.0	0	0	0.0	0	0	0.00	(0.58)	
20	0		80,057		78,670	35,100	(50,453)	69,317	16,740	125	0.4	16,740	0	0.4	0	0	0.00	(0.54)	
21	0		78,555		78,560	35,140	(46,746)	66,974	11,582	87	0.3	11,582	0	0.3	0	0	0.00	(0.39)	
22	0		81,497		78,520	35,150	(33,621)	80,049	1,448	11	0.0	1,448	0	0.0	0	0	0.00	(0.42)	
23	0		77,653		78,510	35,090	(35,947)	77,653	0	0	0.0	0	0	0.0	0	0	0.00	(0.61)	
24	0		61,263		78,590	35,120	(52,447)	61,263	0	0	0.0	0	0	0.0	0	0	0.00	(0.71)	
25	0		75,045		78,600	35,170	(61,775)	51,995	23,050	172	0.5	23,050	0	0.5	0	0	0.00	(0.59)	
26	0		72,728		78,560	35,130	(51,099)	62,591	10,137	76	0.2	10,137	0	0.2	0	0	0.00	(0.37)	
27	0		84,695		78,520	35,070	(32,300)	81,290	3,405	25	0.1	3,405	0	0.1	0	0	0.00	(0.24)	
28	0		93,028		78,340	35,020	(20,332)	93,028	5,396	40	0.0	5,396	0	0.0	0	40	0.12	0.00	
29	0		85,886		45,300	35,190	0	80,490	0	0	0.0	0	0	0.0	0	0	0.00	0.00	
30	0						0	0	0	0	0.0	0	0	0.0	0	0	0.00	0.00	
31	0						0	0	0	0	0.0	0	0	0.0	0	0	0.00	0.00	
Total	0		2,458,880		2,328,760	1,044,020	(1,092,464)	2,280,316	178,564	1,336	4.1	170,137	8,427	3.9	63	0.19			

CALIFORNIA-AMERICAN WATER COMPANY  
 Monterey Division 443  
 Upper CV Wells Daily Production Report  
 September 2001

Date	Russell #2	Russell #4	Robles	Panetta #1	Panetta #2	Garzas #3	Garzas #4	LL #5	LL #6	TOTAL CF	TOTAL 1000 G	TOTAL AF
1	64,775	34,420	0	0	0	0	0	0	0	99,195	742	2.28
2	55,585	34,430	0	0	0	0	0	0	0	90,015	673	2.07
3	78,910	34,250	0	0	0	0	0	0	0	113,160	846	2.60
4	63,971	34,170	0	0	0	0	0	0	0	98,141	734	2.25
5	60,153	34,080	0	0	0	0	0	0	0	94,233	705	2.16
6	44,777	34,670	0	0	0	0	0	0	0	79,447	594	1.82
7	41,396	34,800	0	0	0	0	0	0	0	76,196	570	1.75
8	48,020	34,810	0	0	0	0	0	0	0	82,830	620	1.90
9	41,166	34,580	0	0	0	0	0	0	0	75,746	567	1.74
10	41,547	34,960	0	0	0	0	0	0	0	76,507	572	1.76
11	17,039	34,500	0	0	0	0	0	0	0	51,539	386	1.18
12	36,905	34,960	0	0	0	0	0	0	0	71,865	538	1.65
13	33,919	34,920	0	0	0	0	0	0	0	68,839	515	1.58
14	38,142	34,760	0	0	0	0	0	0	0	72,902	545	1.67
15	41,859	34,840	0	0	0	0	0	0	0	76,699	574	1.76
16	25,427	33,850	0	0	0	0	0	0	0	59,277	443	1.36
17	24,825	34,730	0	0	0	0	0	0	0	59,555	446	1.37
18	36,246	34,820	0	0	0	0	0	0	0	71,066	532	1.63
19	38,605	35,150	0	0	0	0	0	0	0	73,755	552	1.69
20	36,559	35,140	0	0	0	0	0	0	0	70,699	529	1.62
21	28,217	35,100	0	0	0	0	0	0	0	63,317	474	1.45
22	31,834	35,140	0	0	0	0	0	0	0	66,974	501	1.54
23	44,899	35,150	0	0	0	0	0	0	0	80,049	599	1.84
24	42,563	35,090	0	0	0	0	0	0	0	77,653	581	1.78
25	26,143	35,120	0	0	0	0	0	0	0	61,263	458	1.41
26	16,825	35,170	0	0	0	0	0	0	0	51,995	389	1.19
27	27,461	35,130	0	0	0	0	0	0	0	62,591	468	1.44
28	46,220	35,070	0	0	0	0	0	0	0	81,290	608	1.87
29	58,008	35,020	0	0	0	0	0	0	0	93,028	696	2.14
30	45,300	35,190	0	0	0	0	0	0	0	80,490	602	1.85
31			0	0	0	0	0	0	0	0	0	0.00
CF	1,236,296	1,044,020	0	0	0	0	0	0	0	2,280,316	17,058	52.35
1000 G	9,248	7,810	0	0	0	0	0	0	0	17,058		
AF	28.4	24.0	0.0	0.0	0.0	0.0	0.0	0.0	0.0	52.3		



CALIFORNIA-AMERICAN WATER COMPANY  
 Monterey Division 443  
 Lower CV Wells Daily Production Report  
 September 2001

date	Berwick #1	Berwick #6	Begonia	Manor	Schulte	Pearce	Cypress	San Carlos	R. Canada	BIRP * Backwash	L. CV Wells thru BIRP	Scarlett #5	TOTAL CF	TOTAL 1000 G	TOTAL AF
1	0	0	16,022	11,700	56,600	147,800	277,400	137,500	337,900	10,736	974,186	0	974,186	7,287	22.36
2	0	0	12,375	9,100	42,100	151,200	310,800	136,800	336,500	(13,547)	1,012,422	0	1,012,422	7,573	23.24
3	0	0	41,292	25,600	48,600	221,500	282,000	135,200	326,500	(4,163)	1,084,855	0	1,084,855	8,115	24.90
4	0	0	33,216	53,500	114,900	144,300	271,600	134,800	329,900	(5,401)	1,087,617	0	1,087,617	8,136	24.97
5	0	0	42,985	34,700	67,000	220,100	281,300	133,900	324,400	598	1,103,787	0	1,103,787	8,257	25.34
6	0	0	43,997	28,900	109,500	228,500	280,500	132,900	320,800	1,916	1,144,481	0	1,144,481	8,561	26.27
7	0	1,400	99,257	51,500	161,700	311,100	299,500	130,900	299,500	4,881	1,348,576	0	1,348,576	10,088	30.96
8	0	0	36,082	30,900	78,800	288,300	307,300	130,600	313,600	(1,632)	1,187,213	0	1,187,213	8,881	27.25
9	0	0	19,148	12,500	104,900	254,000	287,500	130,300	319,800	2,814	1,125,334	0	1,125,334	8,418	25.83
10	0	0	26,442	27,800	74,500	239,800	279,200	129,500	322,400	2,436	1,097,206	0	1,097,206	8,208	25.19
11	0	0	16,282	10,800	64,800	201,600	278,900	129,500	331,000	5,077	1,027,805	0	1,027,805	7,689	23.60
12	0	0	0	0	19,700	251,800	274,300	118,200	302,000	2,459	963,541	0	963,541	7,208	22.12
13	0	0	32,955	23,700	72,900	320,700	300,700	134,600	341,100	(13,166)	1,236,351	0	1,236,351	9,275	28.46
14	0	0	41,031	21,127	92,854	330,156	308,385	126,857	316,855	914	1,141,122	0	1,141,122	9,249	28.38
15	0	0	24,749	28,200	93,100	244,000	308,400	126,800	330,700	927	1,141,122	0	1,141,122	8,536	26.20
16	0	0	22,404	21,200	60,500	185,500	278,500	126,600	337,700	1,884	1,023,520	0	1,023,520	7,656	23.50
17	0	0	27,615	18,800	35,600	151,600	275,200	117,600	319,200	4,484	968,431	0	968,431	7,244	22.23
18	0	0	45,590	24,600	51,100	82,500	217,300	125,700	341,000	4,428	915,872	0	915,872	6,389	19.61
19	0	0	0	9,200	26,800	185,300	232,300	123,200	320,200	3,830	854,060	0	854,060	6,851	21.03
20	0	0	0	13,900	92,900	268,900	272,400	123,600	324,600	(17,103)	1,096,603	0	1,096,603	8,203	25.17
21	0	0	53,145	30,400	77,700	231,400	265,800	122,900	322,400	(1,604)	1,055,404	0	1,055,404	7,895	24.23
22	0	0	124,006	62,300	143,900	210,600	242,700	117,000	324,900	(1,067)	1,104,812	0	1,104,812	8,265	25.36
23	0	0	23,837	13,800	60,500	250,400	275,000	117,900	312,000	(1,564)	1,218,970	0	1,218,970	9,119	27.98
24	0	0	0	0	19,300	246,000	299,000	117,000	324,900	11,221	1,054,216	0	1,054,216	7,886	24.20
25	0	0	69,949	38,500	88,600	152,100	266,900	108,900	335,900	7,908	972,092	0	972,092	7,272	22.32
26	0	12,300	0	36,300	81,000	216,000	309,900	123,400	249,700	(2,144)	1,022,893	0	1,022,893	7,652	23.48
27	0	0	0	25,000	140,000	289,200	271,900	119,700	306,300	(5,082)	1,021,382	0	1,021,382	7,640	23.45
28	0	0	76,852	50,200	128,600	274,800	252,000	120,600	308,300	10,789	1,141,311	0	1,141,311	8,538	26.20
29	0	0	212,321	96,100	196,600	257,000	259,600	119,200	291,400	(12,647)	1,223,999	0	1,223,999	9,156	28.10
30	0	0	0	0	0	0	0	0	0	(2,075)	1,434,296	0	1,434,296	10,729	32.93
31	0	0	0	0	0	0	0	0	0	0	0	0	0	0	0.00
CF	0	13,700	1,141,451	810,327	2,419,354	6,810,756	8,330,985	3,744,857	9,546,855	(3,886)	32,882,181	0	32,882,181	245,976	754.87
1000 G	0	102	8,539	6,052	18,547	50,948	62,320	28,013	71,415	(29)	245,976	0	245,976	754.9	
AF	0.0	0.3	26.2	18.6	56.9	156.4	191.3	86.0	219.2	(0.1)	754.9	0.0	754.9		

\* Backwash is deducted from Lower CV Wells

CALIFORNIA-AMERICAN WATER COMPANY  
 Monterey Division 443  
 CVFP Daily Production Report  
 August 2001

Date	Gravity CF	Low Flow CF	Russell #2 CF	Russell #4 CF	To Carmel River CF	Wells 2 & 4		Diversion (Less Russell)		Backwash		NET DIVERSION TO SYSTEM			To the River CFS		
						CF	AF	CF	AF	CF	AF	CF	AF	CF		AF	CF
1	0	106,849	79,250	35,000	(7,401)	106,849	0	0	0	0	0	0	0	0	0.00	0.00	(0.09)
2	0	95,580	79,240	35,190	(38,828)	75,602	19,978	149	0	0	0	0	0	0	0.00	0.00	(0.45)
3	0	101,873	79,220	35,180	(23,210)	91,190	10,683	80	0	0	0	0	0	0	0.00	0.00	(0.27)
4	0	111,938	79,040	34,790	(1,892)	111,938	0	0	0	0	0	0	0	0	0.00	0.00	(0.02)
5	0	105,377	78,950	34,770	(8,343)	105,377	0	0	0	0	0	0	0	0	0.00	0.00	(0.10)
6	0	127,194	79,020	34,910	0	113,930	13,264	99	0	0	0	0	0	0	0.30	0.15	0.00
7	0	131,839	79,010	34,970	0	113,980	17,859	134	0	0	0	0	0	0	0.07	0.03	0.00
8	0	118,292	78,990	34,830	(3,046)	110,774	7,518	56	0	0	0	0	0	0	0.00	0.00	(0.04)
9	0	102,245	78,990	34,840	(15,449)	98,381	3,864	29	0	0	0	0	0	0	0.00	0.00	(0.18)
10	0	108,113	78,970	34,840	(5,697)	108,113	0	0	0	0	0	0	0	0	0.00	0.00	(0.07)
11	0	104,299	78,940	34,860	(9,301)	104,299	0	0	0	0	0	0	0	0	0.00	0.00	(0.11)
12	0	103,040	78,920	34,530	(33,832)	79,618	23,422	175	0	0	0	0	0	0	0.00	0.00	(0.39)
13	0	102,202	78,960	34,480	(32,664)	80,776	17,014	127	0	0	0	0	0	0	0.00	0.00	(0.38)
14	0	102,098	78,900	34,480	(11,168)	102,202	0	0	0	0	0	0	0	0	0.00	0.00	(0.13)
15	0	97,037	78,930	34,360	(11,272)	102,098	0	0	0	0	0	0	0	0	0.00	0.00	(0.19)
16	0	102,946	78,880	34,680	(26,282)	87,288	15,658	117	0	0	0	0	0	0	0.00	0.00	(0.30)
17	0	106,032	78,820	35,090	(16,944)	96,966	9,066	68	0	0	0	0	0	0	0.00	0.00	(0.20)
18	0	105,011	78,830	35,040	(8,859)	105,011	0	0	0	0	0	0	0	0	0.00	0.00	(0.10)
19	0	97,818	78,780	35,130	(16,092)	97,818	0	0	0	0	0	0	0	0	0.00	0.00	(0.19)
20	0	99,439	79,290	34,740	(14,591)	99,439	0	0	0	0	0	0	0	0	0.00	0.00	(0.17)
21	0	95,777	79,280	35,650	(36,316)	78,614	22,817	171	0	0	0	0	0	0	0.00	0.00	(0.42)
22	0	101,431	79,230	35,640	(30,094)	84,776	11,001	82	0	0	0	0	0	0	0.00	0.00	(0.35)
23	0	105,515	79,220	35,820	(12,990)	102,050	3,465	26	0	0	0	0	0	0	0.00	0.00	(0.15)
24	0	110,105	79,230	35,760	(4,885)	110,105	0	0	0	0	0	0	0	0	0.00	0.00	(0.06)
25	0	97,818	78,780	35,130	(16,092)	97,818	0	0	0	0	0	0	0	0	0.00	0.00	(0.19)
26	0	111,460	79,180	35,600	(23,454)	91,326	20,134	151	0	0	0	0	0	0	0.00	0.00	(0.27)
27	0	97,794	75,980	35,500	(24,116)	87,364	10,430	78	0	0	0	0	0	0	0.00	0.00	(0.28)
28	0	108,624	79,430	35,350	(6,156)	108,624	0	0	0	0	0	0	0	0	0.00	0.00	(0.07)
29	0	93,919	79,400	35,410	(20,891)	93,919	0	0	0	0	0	0	0	0	0.00	0.00	(0.24)
30	0	104,694	79,170	35,490	(9,966)	104,694	0	0	0	0	0	0	0	0	0.00	0.00	(0.12)
31	0	0	0	0	0	0	0	0	0	0	0	0	0	0	0.00	0.00	0.00
Total	0	3,254,149	2,447,760	1,086,300	(486,064)	3,047,976	206,173	1,542	4.7	190,070	4.4	16,103	120	0.37	0.00	0.00	0.00

CALIFORNIA-AMERICAN WATER COMPANY  
 Monterey Division 443  
 Upper CV Wells Daily Production Report  
 August 2001

Date	Russell #2	Russell #4	Robbles	Panetta #1	Panetta #2	Garzas #3	Garzas #4	LL #6	LL #6	TOTAL CF	TOTAL 1000 G	TOTAL AF
1	71,849	35,000	0	0	16,620	0	0	0	0	123,469	924	2.83
2	40,412	35,190	0	0	16,950	0	0	0	0	92,252	690	2.12
3	56,010	35,180	0	0	16,990	0	0	0	0	107,880	807	2.48
4	77,148	34,790	0	0	16,670	0	0	0	0	128,608	962	2.95
5	70,607	34,770	0	0	7,180	0	0	0	0	112,557	842	2.58
6	79,020	34,910	0	0	14,930	0	0	0	0	128,860	964	2.96
7	79,010	34,970	0	0	0	14,560	0	0	0	128,540	962	2.95
8	75,944	34,830	0	0	0	15,630	0	0	0	126,404	946	2.90
9	63,541	34,840	0	0	0	14,280	0	0	0	112,661	843	2.59
10	73,273	34,840	0	0	0	15,840	0	0	0	123,953	927	2.85
11	69,639	34,660	0	0	0	13,450	0	0	0	117,749	881	2.70
12	45,088	34,530	0	0	0	16,450	0	0	0	96,068	719	2.21
13	45,296	34,480	0	0	0	16,420	0	0	0	97,196	727	2.23
14	67,722	34,480	0	0	0	16,180	0	0	0	118,382	886	2.72
15	67,668	34,430	0	380	170	0	15,740	0	0	118,388	886	2.72
16	62,677	34,360	0	0	0	0	15,590	0	0	112,627	843	2.59
17	52,598	34,690	0	0	0	0	16,150	0	0	103,438	774	2.37
18	61,876	35,090	0	0	0	0	14,590	0	0	111,556	834	2.56
19	69,971	35,040	0	0	0	0	16,010	0	0	121,021	905	2.78
20	62,688	35,130	0	0	0	0	16,270	0	0	114,088	853	2.62
21	64,699	34,740	0	13,010	0	0	0	0	0	112,449	841	2.58
22	42,864	35,650	0	13,420	0	0	0	0	0	92,034	688	2.11
23	49,136	35,640	0	0	0	0	0	0	0	84,776	634	1.95
24	66,230	35,820	0	0	0	0	0	0	0	102,050	763	2.34
25	74,345	35,760	0	0	0	0	0	0	0	110,105	824	2.53
26	62,688	35,130	0	0	0	0	16,270	0	0	114,088	853	2.62
27	55,726	35,600	0	0	0	0	0	0	0	91,326	683	2.10
28	51,864	35,500	0	0	0	0	0	0	0	87,364	654	2.01
29	73,274	35,350	0	0	0	0	0	0	0	108,624	813	2.49
30	58,509	35,410	0	0	0	0	0	0	0	93,919	703	2.16
31	69,204	35,490	0	0	0	0	0	0	0	104,694	783	2.40
CF	1,961,676	1,086,300	0	25,810	88,910	122,810	110,620	0	0	3,397,126	25,412	77.99
1000 G	14,674	8,126	0	201	665	919	827	0	0	25,412		
AF	45.0	24.9	0.0	0.6	2.0	2.8	2.5	0.0	0.0	78.0		

**CALIFORNIA-AMERICAN WATER COMPANY**  
 Monterey Division 443  
 Lower CV Wells Daily Production Report  
 August 2001

Date	Berwick #7	Berwick #8	Begonia	Manor	Schulte	Pearce	Cypress	San Carlos	R. Canada	BWRP * Backwash	L. CV Wells thru BWRP	Scarlett #8	TOTAL CF	TOTAL 1000 G	TOTAL AF
1	0	0	47,100	79,089	233,800	383,500	0	146,000	331,900	(1,076)	1,222,465	0	1,222,465	9,145	28.06
2	0	0	66,100	70,599	182,700	365,700	0	147,800	337,400	533	1,169,166	0	1,169,166	8,746	26.84
3	0	0	40,700	60,031	197,700	387,900	0	147,200	335,000	(2,426)	1,170,957	0	1,170,957	8,759	26.88
4	0	0	72,700	70,166	199,400	366,200	0	146,400	334,500	590	1,188,776	0	1,188,776	8,893	27.29
5	0	0	116,100	113,912	211,300	361,600	0	144,000	329,400	3,744	1,272,568	0	1,272,568	9,519	29.21
6	0	0	105,100	112,786	182,700	352,700	171,000	133,400	295,300	(21,861)	1,374,847	0	1,374,847	10,285	31.56
7	0	9,900	97,954	75,537	145,000	254,000	321,800	117,000	260,900	(24,189)	1,306,280	0	1,306,280	9,772	29.99
8	0	5,700	113,976	145,300	217,500	327,700	324,800	124,400	274,100	5,658	1,527,818	0	1,527,818	11,429	35.07
9	0	0	73,987	81,800	161,000	311,300	333,100	130,200	291,000	5,220	1,377,167	0	1,377,167	10,302	31.62
10	0	0	58,356	41,400	138,800	325,300	335,900	132,000	296,300	(6,330)	1,336,386	0	1,336,386	9,997	30.68
11	0	0	29,959	63,400	152,000	262,800	339,700	133,100	300,100	6,444	1,274,615	0	1,274,615	9,535	29.26
12	0	0	33,607	51,700	114,400	247,800	333,700	135,100	307,100	2,577	1,220,830	0	1,220,830	9,132	28.03
13	0	0	52,755	38,700	159,000	294,600	338,500	131,500	296,600	2,283	1,312,672	0	1,312,672	9,819	30.13
14	0	1,000	42,725	32,700	112,900	294,600	341,800	127,500	302,500	(3,129)	1,258,854	0	1,258,854	9,417	28.90
15	0	0	37,124	14,300	190,700	312,400	335,500	127,000	293,200	(3,313)	1,313,537	0	1,313,537	9,826	30.15
16	0	0	0	52,300	139,000	246,000	341,800	143,600	303,000	(9,973)	1,235,673	0	1,235,673	9,243	28.37
17	0	0	49,889	62,100	151,200	263,400	322,200	130,700	280,900	(517)	1,260,906	0	1,260,906	9,432	28.95
18	0	0	69,428	57,500	111,200	209,200	344,200	143,100	307,100	32,215	1,209,513	0	1,209,513	9,048	27.77
19	0	0	46,632	83,600	208,400	291,600	337,000	140,300	51,200	(62,367)	1,221,099	0	1,221,099	9,134	28.03
20	0	0	34,258	63,800	159,400	238,700	326,700	146,300	0	(9,511)	1,132,569	0	1,132,569	8,472	26.00
21	0	0	61,873	67,500	151,200	238,700	356,700	146,900	122,500	6,587	1,108,186	0	1,108,186	8,290	25.44
22	0	0	32,304	53,900	118,000	302,900	320,200	141,600	298,800	(4,278)	1,271,982	0	1,271,982	9,515	29.20
23	0	0	124,657	90,700	183,700	240,600	334,800	139,000	290,800	(3,341)	1,407,598	0	1,407,598	10,530	32.31
24	0	0	46,502	50,800	169,000	290,000	335,100	139,900	292,200	(1,068)	1,324,570	0	1,324,570	9,908	30.41
25	0	0	76,592	46,200	192,000	257,600	336,000	139,400	293,700	899	1,340,593	0	1,340,593	10,028	30.78
26	0	0	58,877	63,800	159,400	362,000	356,700	146,900	354,585	4,596	1,497,666	0	1,497,666	11,203	34.38
27	0	0	103,816	120,300	216,500	292,400	325,800	136,600	277,200	11,820	1,460,796	0	1,460,796	10,928	33.54
28	0	0	107,463	69,800	194,800	312,700	328,200	137,100	283,300	10,284	1,423,079	0	1,423,079	10,645	32.67
29	0	0	43,376	44,700	190,100	329,200	329,400	137,300	286,300	(71)	1,360,447	0	1,360,447	10,177	31.23
30	0	0	26,963	20,600	89,900	283,500	328,700	137,500	296,200	(9,684)	1,193,047	0	1,193,047	8,925	27.39
31	0	0	33,216	20,700	42,200	295,800	458,600	189,700	441,400	(7,520)	1,489,136	0	1,489,136	11,140	34.19
CF	0	16,600	1,904,089	2,019,720	5,074,900	9,428,400	8,657,900	4,318,500	8,764,485	(79,202)	40,263,796	0	40,263,796	301,194	924.33
1000 G	0	124	14,244	15,109	37,963	70,529	64,766	32,305	65,563	(692)	301,194	0	301,194	0	0
AF	0.0	0.4	43.7	45.4	116.5	216.4	198.8	99.1	201.2	(1.8)	924.3	0.0	924.3	0	0

\* Backwash is deducted from Lower CV Wells

CALIFORNIA-AMERICAN WATER COMPANY  
 Monterey Division 443  
 CVFP Daily Production Report  
 July 2001

Date	Gravity CF	Low Flow CF	Russell #2 CF	Russell #4 CF	To Carmel River CF	Wells 2 & 4		Diversion (Less Russell)		Backwash		NET DIVERSION TO SYSTEM				To the River		
						CF	1000 Gal.	CF	AF	CF	AF	CF	AF	CF	AF	CF	AF	CF
1	0	113,881	80,470	35,800	(2,389)	113,881	0	0	0.0	0	0	0	0	0	0	0.00	0.00	(0.03)
2	0	113,881	80,380	35,570	(2,069)	113,881	0	0	0.0	0	0	0	0	0	0	0.00	0.00	(0.02)
3	0	121,804	80,380	35,170	(13,540)	102,010	19,794	148	0.5	19,794	0	0	0	0	0	0.00	0.00	(0.16)
4	0	118,834	80,400	36,110	(5,771)	110,739	8,095	61	0.2	8,095	0	0	0	0	0	0.00	0.00	(0.07)
5	0	80,276	80,500	36,200	(40,372)	76,328	3,948	30	0.1	3,948	0	0	0	0	0	0.00	0.00	(0.47)
6	0	85,691	80,080	35,990	(30,379)	85,691	0	0	0.0	0	0	0	0	0	0	0.00	0.00	(0.35)
7	0	116,732	79,310	35,760	0	115,070	1,662	12	0.0	1,662	0	0	12	0	0	0.04	0.02	0.00
8	0	112,130	79,420	35,730	(19,879)	95,271	16,859	126	0.4	16,859	0	0	0	0	0	0.00	0.00	(0.23)
9	0	105,096	79,490	35,730	(18,836)	96,384	8,712	65	0.2	8,712	0	0	0	0	0	0.00	0.00	(0.22)
10	0	97,355	79,490	35,770	(17,905)	97,355	0	0	0.0	0	0	0	0	0	0	0.00	0.00	(0.12)
11	0	104,503	79,360	35,790	(10,647)	104,503	0	0	0.0	0	0	0	0	0	0	0.00	0.00	(0.11)
12	0	105,628	79,360	35,750	(9,482)	105,628	0	0	0.0	0	0	0	0	0	0	0.00	0.00	(0.32)
13	0	106,107	79,420	35,740	(27,925)	87,235	18,872	141	0.4	18,872	0	0	0	0	0	0.00	0.00	(0.20)
14	0	107,026	79,380	35,780	(17,608)	97,552	9,474	71	0.2	9,474	0	0	0	0	0	0.00	0.00	(0.11)
15	0	107,529	79,410	35,650	(9,297)	105,763	1,866	14	0.0	1,866	0	0	0	0	0	0.00	0.00	(0.32)
16	0	131,434	79,350	35,670	0	115,020	16,414	123	0.4	16,414	0	0	123	0	0	0.38	0.19	0.00
17	0	133,536	79,300	35,770	(5,528)	115,070	18,466	138	0.4	18,466	0	0	138	0	0	0.42	0.21	0.00
18	0	124,912	79,330	35,730	(24,228)	109,532	15,380	115	0.4	15,380	0	0	0	0	0	0.00	0.00	(0.06)
19	0	100,508	79,170	35,550	(10,950)	90,492	10,016	75	0.2	10,016	0	0	0	0	0	0.00	0.00	(0.13)
20	0	103,780	79,230	35,500	(7,127)	103,780	0	0	0.0	0	0	0	0	0	0	0.00	0.00	(0.08)
21	0	107,743	79,360	35,490	(10,782)	107,743	0	0	0.0	0	0	0	0	0	0	0.00	0.00	(0.12)
22	0	104,068	79,360	35,490	(30,729)	83,601	19,392	145	0.4	19,392	0	0	0	0	0	0.00	0.00	(0.36)
23	0	102,993	79,310	35,020	(23,270)	90,880	12,987	97	0.3	12,987	0	0	0	0	0	0.00	0.00	(0.27)
24	0	103,877	79,540	34,620	(11,931)	102,599	0	0	0.0	0	0	0	0	0	0	0.00	0.00	(0.14)
25	0	102,599	79,460	35,070	(12,663)	101,877	0	0	0.0	0	0	0	0	0	0	0.00	0.00	(0.15)
26	0	101,877	79,430	35,110	(13,395)	101,065	0	0	0.0	0	0	0	0	0	0	0.00	0.00	(0.16)
27	0	101,065	79,400	35,060	(26,984)	87,386	19,597	147	0.4	19,597	0	0	0	0	0	0.00	0.00	(0.31)
28	0	106,983	79,410	34,960	(26,840)	87,430	13,074	98	0.3	13,074	0	0	0	0	0	0.00	0.00	(0.31)
29	0	100,504	79,390	34,880	(9,582)	104,538	548	4	0.0	548	0	0	0	0	0	0.00	0.00	(0.11)
30	0	105,086	79,210	34,910	(17,116)	96,634	0	0	0.0	0	0	0	0	0	0	0.00	0.00	(0.20)
31	0	96,634	79,290	34,460	(45,724)	0	0	0	0.0	0	0	0	0	0	0	0.00	0.00	(0.20)
Total	0	3,324,172	2,465,410	1,099,830	(457,224)	3,109,016	215,156	1,609	4.9	178,614	0	0	36,542	273	0	0.84	0.00	

CALIFORNIA-AMERICAN WATER COMPANY  
 Monterey Division 443  
 Upper CV Wells Daily Production Report  
 July 2001

Date	Russell #2	Russell #4	Robles	Panetta #1	Panetta #2	Garzas #3	Garzas #4	LL #5	LL #6	TOTAL CF	TOTAL 1000 G	TOTAL AF
1	78,081	35,800	0	13,750	0	0	0	0	0	127,631	955	2.93
2	78,311	35,570	0	13,600	0	0	0	0	0	127,481	954	2.93
3	66,840	35,170	0	0	14,170	0	0	0	0	116,180	869	2.67
4	74,629	36,110	0	0	660	0	0	0	0	111,399	833	2.56
5	40,128	36,200	0	0	9,760	0	0	0	0	86,088	644	1.98
6	49,701	35,990	0	0	11,070	0	0	0	0	96,761	724	2.22
7	79,310	35,760	0	0	13,650	0	0	0	0	128,720	963	2.96
8	59,541	35,730	0	0	16,620	0	0	0	0	111,891	837	2.57
9	60,654	35,730	0	7,810	1,860	110	0	0	0	113,064	846	2.60
10	61,585	35,770	0	0	0	0	0	0	0	107,135	801	2.46
11	68,713	35,790	0	0	0	11,400	0	0	0	104,503	782	2.40
12	69,878	35,750	0	0	0	10,590	0	0	0	117,028	875	2.69
13	51,495	35,740	0	0	0	16,500	0	0	0	97,825	732	2.25
14	61,772	35,780	0	0	0	16,500	0	0	0	114,052	853	2.62
15	70,113	35,650	0	0	0	16,490	0	0	0	122,253	915	2.81
16	79,350	35,670	0	0	0	16,450	0	0	0	131,470	983	3.02
17	79,300	35,770	0	0	0	16,490	0	0	0	131,560	984	3.02
18	73,802	35,730	0	0	0	16,380	0	0	0	125,912	942	2.89
19	54,942	35,550	0	0	0	4,640	10,290	0	0	105,422	789	2.42
20	68,280	35,500	0	0	0	0	16,100	0	0	119,880	897	2.75
21	72,253	35,490	0	0	0	0	16,160	0	0	123,903	927	2.84
22	68,578	35,490	0	0	0	0	16,140	0	0	120,208	899	2.76
23	48,581	35,020	0	0	0	0	16,160	0	0	99,761	746	2.29
24	56,270	34,520	0	0	0	0	16,230	0	0	107,120	801	2.46
25	67,529	35,070	0	0	0	0	16,230	0	0	118,829	889	2.73
26	66,767	35,110	0	8,750	0	0	4,780	0	0	115,407	863	2.65
27	66,005	35,060	0	13,500	0	0	0	0	0	114,565	857	2.63
28	52,425	34,960	0	13,580	0	0	0	0	0	100,966	755	2.32
29	52,550	34,880	0	13,510	0	0	0	0	0	100,940	755	2.32
30	69,628	34,910	0	10,820	230	0	0	0	0	115,588	865	2.65
31	62,174	34,460	0	190	16,700	0	0	0	0	113,524	849	2.61
CF	2,009,186	1,099,830	0	95,510	101,400	109,050	112,050	0	0	3,527,066	26,384	80.97
1000 G	15,030	8,227	0	714	759	816	836	0	0	26,384		
AF	46.1	25.2	0.0	2.2	2.3	2.5	2.6	0.0	0.0	81.0		

**CALIFORNIA-AMERICAN WATER COMPANY**  
 Monterey Division 443  
 Lower CV Wells Daily Production Report  
 July 2001

Date	Berwick #7	Berwick #8	Begonia	Manor	Schulte	Pearce	Cypress	San Carlos	R. Carnada	BRRP * Backwash	L. CV Wells thru BRRP	Scarlett #9	TOTAL CF	TOTAL 1000 G	TOTAL AF
1	0	91,200	288,700	229,200	287,980	44,200	280,400	140,300	315,300	(4,676)	1,681,956	0	1,681,956	12,582	38.61
2	0	0	221,300	231,700	210,345	68,300	285,300	143,700	321,000	288	1,481,357	0	1,481,357	11,081	34.01
3	0	105,000	227,500	232,100	228,824	0	272,400	146,300	328,300	662	1,539,762	0	1,539,762	11,518	35.35
4	0	96,400	213,700	230,600	269,141	0	287,300	144,000	323,500	(3,366)	1,568,007	0	1,568,007	11,730	36.00
5	0	113,500	231,900	229,800	263,142	0	286,400	143,500	322,400	(746)	1,591,388	0	1,591,388	11,904	36.53
6	0	100,200	239,600	191,100	287,980	0	286,500	143,600	323,100	1,000	1,571,080	0	1,571,080	11,752	36.07
7	0	98,800	198,100	207,600	287,980	1,400	276,000	143,100	322,800	(2,056)	1,547,536	0	1,547,536	11,576	35.53
8	0	22,600	118,600	156,500	272,741	140,900	275,000	139,000	311,300	(803)	1,438,444	0	1,438,444	10,760	33.02
9	0	45,700	132,500	138,900	208,426	337,000	258,300	131,100	291,800	17,580	1,526,146	0	1,526,146	11,416	35.04
10	0	0	46,400	49,100	266,600	277,300	276,300	141,000	315,300	(2,237)	1,220,257	0	1,220,257	9,128	28.01
11	0	2,000	30,500	57,200	86,962	247,500	276,800	144,800	322,900	(7,762)	1,174,424	0	1,174,424	8,785	26.96
12	0	0	62,100	70,100	115,982	241,900	282,300	142,700	317,600	3,227	1,229,455	0	1,229,455	9,197	28.22
13	0	0	92,200	98,100	160,716	260,500	276,200	139,000	308,100	(6,730)	1,341,546	0	1,341,546	10,035	30.80
14	0	0	60,000	58,300	153,485	318,800	282,300	147,700	306,800	(4,956)	1,314,141	0	1,314,141	9,830	30.17
15	0	0	33,900	42,600	114,439	286,100	282,800	141,900	316,200	(4,313)	1,222,252	0	1,222,252	9,143	28.06
16	0	0	64,300	65,800	113,475	254,800	282,900	142,100	315,900	(2,319)	1,241,594	0	1,241,594	9,288	28.50
17	0	0	10,700	100	84,166	209,200	294,700	147,500	328,500	(1,989)	1,076,855	0	1,076,855	8,055	24.72
18	0	0	46,000	41,840	104,605	232,900	288,100	144,300	320,700	(1,786)	1,180,231	0	1,180,231	8,829	27.09
19	0	0	53,200	41,407	53,990	271,200	262,600	145,300	324,600	198	1,152,099	0	1,152,099	8,618	26.45
20	0	0	41,700	56,913	80,310	245,000	264,400	144,700	322,400	(1,512)	1,156,935	0	1,156,935	8,654	26.56
21	0	0	31,700	28,413	73,272	261,300	289,300	144,800	322,300	(1,443)	1,152,528	0	1,152,528	8,622	26.46
22	0	0	28,100	27,287	127,744	247,800	265,000	143,000	318,800	1,060	1,156,671	0	1,156,671	8,652	26.55
23	0	0	44,700	43,572	59,300	256,600	288,200	144,100	320,300	8,130	1,148,642	0	1,148,642	8,592	26.37
24	0	0	52,500	54,574	219,800	289,200	59,300	150,100	336,500	5,700	1,156,274	0	1,156,274	8,650	26.54
25	0	0	182,900	127,512	207,600	382,100	0	146,000	326,500	2,300	1,370,312	0	1,370,312	10,251	31.46
26	0	0	84,600	102,044	209,200	380,500	0	146,400	329,300	398	1,251,646	0	1,251,646	9,363	28.73
27	0	0	103,800	121,968	242,100	357,200	0	135,900	287,400	1,700	1,246,668	0	1,246,668	9,326	28.62
28	0	0	167,300	144,057	275,700	357,600	0	137,700	196,800	(6,144)	1,285,301	0	1,285,301	9,615	29.51
29	0	0	91,200	66,441	153,200	366,100	0	141,600	320,000	(12,690)	1,151,231	0	1,151,231	8,612	26.43
30	0	0	76,100	64,536	215,900	387,000	0	147,600	330,200	(509)	1,221,845	0	1,221,845	9,140	28.05
31	0	0	63,400	65,662	208,900	387,000	0	147,500	334,300	1,198	1,205,564	0	1,205,564	9,018	27.68
CF	0	675,400	3,339,200	3,275,026	5,497,725	7,098,700	6,482,300	4,430,300	9,780,900	(22,596)	40,602,147	0	40,602,147	303,725	932.10
1000 G	0	5,052	24,979	24,499	41,126	53,102	48,491	33,141	73,166	(169)	303,725	0	303,725	0	0.00
AF	0.0	15.5	76.7	75.2	126.2	163.0	146.8	101.7	224.5	(0.5)	932.1	0.0	932.1	0.0	0.00

\* Backwash is deducted from Lower CV Wells

CALIFORNIA-AMERICAN WATER COMPANY  
 Monterey Division 443  
 CVFP Daily Production Report  
 June 2001

Date	Gravity CF	Low Flow CF	Russell #2 CF	Russell #4 CF	To Carmel River	Wells 2 & 4	Diversion (Less Russell)		Backwash		NET DIVERSION TO SYSTEM				To the River	
							CF	1000 Gal.	AF	CF	AF	CF	1000 Gal.	AF	CF	CFS
1	0	218,881	79,320	38,960	0	118,280	100,601	753	2.3	0	0.0	100,601	753	2.31	1.16	0.00
2	0	256,320	79,400	39,020	0	118,420	137,900	1,032	3.2	0	0.0	137,900	1,032	3.17	1.60	0.00
3	0	252,894	79,360	39,010	0	118,370	134,324	1,005	3.1	16,697	0.4	117,627	880	2.70	1.36	0.00
4	0	230,140	79,320	38,990	0	118,310	111,830	837	2.6	10,188	0.2	101,642	760	2.33	1.18	0.00
5	0	230,724	79,190	38,930	0	118,120	112,604	842	2.6	0	0.0	112,604	842	2.59	1.30	0.00
6	0	212,207	79,070	38,880	0	117,950	94,257	705	2.2	0	0.0	94,257	705	2.16	1.09	0.00
7	0	152,755	79,000	38,850	0	117,850	34,905	261	0.8	0	0.0	34,905	261	0.80	0.40	0.00
8	0	140,551	78,730	40,050	0	118,780	21,771	163	0.5	14,956	0.3	6,815	51	0.16	0.08	0.00
9	0	126,087	78,510	40,820	(2,447)	116,883	9,204	69	0.2	9,204	0.2	0	0	0.00	0.00	(0.03)
10	0	112,474	78,510	40,760	(6,796)	112,474	0	0	0.0	0	0.0	0	0	0.00	0.00	(0.08)
11	0	106,013	78,500	40,740	(13,227)	106,013	0	0	0.0	0	0.0	0	0	0.00	0.00	(0.15)
12	0	98,204	78,450	40,650	(20,896)	98,204	0	0	0.0	0	0.0	0	0	0.00	0.00	(0.24)
13	0	103,975	78,460	40,530	(32,820)	86,170	17,805	133	0.4	17,805	0.4	0	0	0.00	0.00	(0.38)
14	0	104,647	78,510	40,420	(24,327)	94,603	10,044	75	0.2	10,044	0.2	0	0	0.00	0.00	(0.28)
15	0	108,607	78,960	38,560	(8,913)	108,607	0	0	0.0	0	0.0	0	0	0.00	0.00	(0.11)
16	0	107,174	79,440	36,810	(9,076)	107,174	0	0	0.0	0	0.0	0	0	0.00	0.00	(0.11)
17	0	106,711	79,520	36,690	(9,499)	106,711	0	0	0.0	0	0.0	0	0	0.00	0.00	(0.11)
18	0	103,408	79,420	36,680	(26,002)	90,098	13,310	100	0.3	13,310	0.3	0	0	0.00	0.00	(0.15)
19	0	103,526	79,450	36,680	(12,604)	103,526	0	0	0.0	0	0.0	0	0	0.00	0.00	(0.30)
20	0	108,135	79,340	36,640	(6,845)	109,135	0	0	0.0	0	0.0	0	0	0.00	0.00	(0.08)
21	0	107,059	79,450	36,530	(8,921)	107,059	0	0	0.0	0	0.0	0	0	0.00	0.00	(0.10)
22	0	107,978	79,550	36,580	(8,152)	107,978	0	0	0.0	0	0.0	0	0	0.00	0.00	(0.09)
23	0	105,949	79,502	36,575	(28,211)	87,866	18,083	135	0.4	18,083	0.4	0	0	0.00	0.00	(0.33)
24	0	107,003	79,502	36,575	(11,595)	104,482	2,521	19	0.1	2,521	0.1	0	0	0.00	0.00	(0.13)
25	0	106,096	78,814	34,845	(7,811)	105,848	248	2	0.0	248	0.0	0	0	0.00	0.00	(0.09)
26	0	103,633	78,970	34,930	(10,267)	103,633	0	0	0.0	0	0.0	0	0	0.00	0.00	(0.12)
27	0	104,779	78,280	34,420	(7,921)	104,779	0	0	0.0	0	0.0	0	0	0.00	0.00	(0.09)
28	0	47,901	75,390	20,640	(62,471)	33,559	14,342	107	0.3	14,342	0.3	0	0	0.00	0.00	(0.72)
29	0	105,805	80,090	48,400	(32,838)	95,652	10,153	76	0.2	10,153	0.2	0	0	0.00	0.00	(0.38)
30	0	122,103	80,600	35,970	0	116,570	5,533	41	0.1	1,355	0.0	4,178	31	0.10	0.05	0.00
31	0	0	0	0	0	0	0	0	0.0	0	0.0	0	0	0.00	0.00	0.00
Total	0	4,002,539	2,370,608	1,134,135	(351,639)	3,153,104	648,435	6,354	19.5	138,906	3.2	710,529	5,315	16.31	0.00	0.00



CALIFORNIA-AMERICAN WATER COMPANY  
 Monterey Division 443  
 Upper CV Wells Daily Production Report  
 June 2001

Date	Russell #2	Russell #4	Robles	Panetta #1	Panetta #2	Garzas #3	Garzas #4	LL #5	LL #6	TOTAL CF	TOTAL 1000 G	TOTAL AF
1	79,320	38,960	0	0	0	0	0	0	0	118,280	885	2.72
2	79,400	39,020	0	0	0	0	0	0	0	118,420	885	2.72
3	79,360	39,070	0	0	0	0	0	0	0	118,370	885	2.72
4	79,320	38,990	0	0	0	0	0	0	0	118,310	885	2.72
5	79,190	38,930	0	2,260	0	0	0	0	0	121,760	911	2.80
6	79,070	38,880	0	300	0	0	0	0	0	118,490	886	2.72
7	79,000	38,850	0	0	0	0	0	0	0	117,850	882	2.71
8	78,730	40,050	0	0	0	0	0	0	0	118,780	889	2.73
9	76,063	40,820	0	0	0	0	0	0	0	116,883	874	2.68
10	71,714	40,760	0	0	0	0	0	0	0	112,474	841	2.58
11	65,273	40,740	0	0	0	0	0	0	0	106,013	793	2.43
12	57,554	40,650	0	0	0	0	0	0	0	98,204	735	2.25
13	45,640	40,530	0	0	0	0	0	0	0	86,170	645	1.98
14	54,183	40,420	0	0	0	0	0	0	0	94,603	708	2.17
15	70,047	38,560	0	0	0	0	0	0	0	108,607	812	2.49
16	70,354	36,810	0	0	0	0	0	0	0	107,174	802	2.46
17	70,021	36,690	0	0	0	0	0	0	0	106,711	798	2.45
18	53,418	36,680	0	0	0	980	750	0	0	91,828	687	2.11
19	66,846	36,680	0	0	0	0	0	0	0	103,526	774	2.38
20	72,495	36,640	0	660	1,160	350	490	0	0	111,795	836	2.57
21	70,529	36,530	0	0	0	0	0	0	0	107,059	801	2.46
22	71,398	36,580	0	0	0	0	0	0	0	107,978	808	2.48
23	51,291	36,575	0	0	0	0	0	0	0	87,866	657	2.02
24	67,907	36,575	0	0	0	0	0	0	0	104,482	782	2.40
25	71,003	34,845	0	0	0	0	0	0	0	105,848	792	2.43
26	68,703	34,930	0	0	0	0	0	0	0	103,633	775	2.38
27	70,359	34,420	0	11,410	0	0	0	0	0	116,189	869	2.67
28	12,919	20,640	0	9,840	0	0	0	0	0	43,199	323	0.99
29	47,252	48,400	0	8,630	0	0	0	0	0	104,282	780	2.39
30	80,600	35,970	0	13,670	0	0	0	0	0	190,240	974	2.99
31			0	0	0	0	0	0	0	0	0	0.00
CF	2,018,969	1,134,135	0	45,630	3,720	1,330	1,240	0	0	3,205,024	23,975	73.58
1000 G	15,103	8,484	0	341	28	10	9	0	0	23,975		
AF	46.3	26.0	0.0	1.0	0.1	0.0	0.0	0.0	0.0	73.6		

CALIFORNIA-AMERICAN WATER COMPANY  
 Monterey Division 443  
 Lower CV Wells Daily Production Report  
 June 2001

Date	Berwick #1	Berwick #8	Begonia	Manor	Schulte	Pearce	Cypress	San Carlos	R. Canada	BIRP * Backwash	L. CV Wells thru BIRP	Scarlett #8	TOTAL CF	TOTAL 1000 G	TOTAL AF
1	200	0	71,500	97,000	199,600	331,300	270,700	171,000	0	12,017	1,129,283	200	1,129,483	8,449	25.93
2	0	0	71,100	115,300	198,900	341,700	283,000	176,300	0	(24,571)	1,210,871	0	1,210,871	9,058	27.80
3	0	0	57,400	89,800	183,800	307,500	297,100	181,100	0	1,218	1,115,482	0	1,115,482	8,344	25.61
4	100	0	47,200	68,300	221,900	348,800	292,000	180,800	0	4,390	1,154,710	0	1,154,710	8,638	26.51
5	0	0	160,800	160,600	30,000	325,600	302,900	183,200	0	7,019	1,156,081	0	1,156,081	8,648	26.54
6	0	0	163,400	163,400	183,800	338,800	281,600	174,300	0	5,250	1,296,750	200	1,296,950	9,702	29.77
7	0	111,753	234,455	192,921	206,278	325,355	275,046	166,614	0	(6,331)	1,518,753	0	1,518,753	11,361	34.87
8	0	77,300	195,800	221,100	287,932	331,647	220,614	172,913	0	(23,203)	1,530,509	0	1,530,509	11,449	35.14
9	0	800	175,600	142,000	255,400	332,100	220,800	173,100	104,300	4,994	1,399,106	0	1,399,106	10,466	32.12
10	0	0	79,900	115,600	180,700	289,000	211,900	159,300	319,400	821	1,354,979	0	1,354,979	10,136	31.11
11	0	0	74,400	111,600	187,700	309,400	215,500	156,900	320,200	13,628	1,332,072	0	1,332,072	9,965	30.58
12	0	0	59,100	85,300	173,200	245,000	232,200	83,900	327,000	(15,046)	1,220,746	0	1,220,746	9,132	28.02
13	0	3,800	93,100	106,100	174,500	267,500	223,900	143,500	324,300	(8,586)	1,345,286	0	1,345,286	10,063	30.88
14	0	0	111,200	124,000	179,100	221,300	230,300	144,500	325,500	6,284	1,315,216	0	1,315,216	9,838	30.19
15	0	0	47,200	123,700	186,227	241,200	232,000	144,600	325,500	(6,602)	1,277,802	0	1,277,802	9,559	29.33
16	0	0	80,000	104,900	183,987	252,500	206,600	146,400	329,300	(13,462)	1,346,689	0	1,346,689	9,536	29.27
17	0	0	191,100	150,700	221,385	273,200	204,600	147,900	325,700	(3,936)	1,274,823	0	1,274,823	9,536	29.27
18	0	0	150,400	134,800	93,953	242,400	232,100	147,300	331,300	13,920	1,400,311	0	1,400,311	10,475	32.15
19	0	0	239,500	188,500	221,385	287,980	237,800	148,300	334,600	(2,410)	1,334,663	0	1,334,663	9,984	30.64
20	0	47,900	246,500	225,100	287,980	287,980	245,500	148,000	333,800	24,490	1,452,595	0	1,452,595	10,866	33.35
21	0	82,200	246,500	204,000	287,980	287,980	245,500	148,000	333,100	(30,610)	1,591,890	0	1,591,890	11,908	36.54
22	0	33,800	186,400	175,000	287,980	287,980	292,800	146,700	330,400	2,490	1,540,690	0	1,540,690	11,525	35.37
23	0	0	187,900	183,300	255,822	285,822	295,100	147,700	332,000	1,710	1,451,370	0	1,451,370	10,857	33.32
24	0	0	186,700	159,100	286,420	286,420	280,400	146,800	330,700	(1,010)	1,402,832	0	1,402,832	10,494	32.20
25	0	35,700	143,000	171,100	242,383	242,383	263,600	143,900	324,100	(5,660)	1,431,480	0	1,431,480	10,708	32.86
26	0	32,400	204,500	239,800	193,427	246,200	224,100	132,600	340,000	2,004	1,318,479	0	1,318,479	9,863	30.27
27	0	20,500	108,600	227,400	132,351	2,400	295,500	147,700	331,700	11,233	1,384,394	0	1,384,394	10,356	31.78
28	0	0	217,800	236,900	205,546	5,400	295,500	148,000	332,000	(6,440)	1,157,991	0	1,157,991	8,662	26.58
29	0	0	212,700	235,700	199,786	2,500	295,600	148,000	332,000	(1,756)	1,442,302	0	1,442,302	10,789	33.11
30	0	0	0	0	0	0	0	0	0	(626)	1,477,412	0	1,477,412	11,052	33.92
31	0	0	0	0	0	0	0	0	0	0	0	0	0	0	0.00
CF	200	578,853	4,320,255	4,689,421	5,904,468	5,650,302	7,577,560	4,602,527	7,003,000	(38,980)	40,365,666	400	40,365,966	301,958	926.66
1000 G	1	4,330	32,318	35,079	44,168	42,267	56,684	34,429	52,386	(292)	301,955	3	301,958	926.7	0.0
AF	0.0	13.3	99.2	107.7	135.5	129.7	174.0	105.7	160.3	(0.9)	926.7	0.0	926.7	0.0	0.0

\* Backwash is deducted from Lower CV Wells

CALIFORNIA-AMERICAN WATER COMPANY  
 Monterey Division 443  
 CVFP Daily Production Report  
 May 2001

Date	Gravity CF	Low Flow CF	Russell #2 CF	Russell #4 CF	To Carmel River	Wells 2 & 4	Diversion (Less Russell)		Backwash		NET DIVERSION TO SYSTEM			To the River	
							CF	1000 Gal.	AF	CF	AF	CF	1000 Gal.	AF	CF
1	0	167,692	80,040	39,340	0	119,380	48,312	361	0	0	48,312	361	1.11	0.56	0.00
2	0	173,780	80,020	39,260	0	119,280	54,500	408	0	0	54,500	408	1.25	0.63	0.00
3	0	199,496	80,070	39,320	0	119,390	80,106	599	0	0	80,106	599	1.84	0.93	0.00
4	0	173,544	80,070	39,380	0	119,450	54,094	405	16,247	0	37,847	283	0.87	0.44	0.00
5	0	172,909	80,030	39,350	0	119,380	53,529	400	64	0	53,465	400	1.23	0.62	0.00
6	0	177,813	80,100	39,360	0	119,460	58,353	437	5,789	0	52,564	393	1.21	0.61	0.00
7	0	183,570	80,020	39,280	0	119,300	64,270	481	0	0	64,270	481	1.48	0.74	0.00
8	0	200,205	80,010	39,270	0	119,280	80,925	605	16,890	0	80,925	605	1.86	0.94	0.00
9	0	213,092	80,120	39,290	0	119,410	93,682	701	9,661	0	76,792	574	1.76	0.89	0.00
10	0	237,220	80,190	39,330	0	119,520	117,700	880	2.7	0	108,039	808	2.48	1.25	0.00
11	0	182,103	80,030	39,220	0	119,250	62,853	470	0	0	62,853	470	1.44	0.73	0.00
12	0	189,589	80,060	39,220	0	119,280	70,309	526	0	0	70,309	526	1.61	0.81	0.00
13	0	191,970	80,070	39,260	0	119,330	72,640	543	0	0	72,640	543	1.67	0.84	0.00
14	0	226,919	80,140	39,240	0	119,360	107,539	804	18,059	0	89,480	669	2.05	1.04	0.00
15	0	240,778	80,130	39,230	0	119,360	121,418	908	10,026	0	111,392	833	2.56	1.29	0.00
16	0	242,164	80,140	39,180	0	119,320	122,844	919	0	0	122,844	919	2.82	1.42	0.00
17	0	227,660	80,130	39,160	0	119,290	108,370	811	0	0	108,370	811	2.49	1.25	0.00
18	0	232,999	80,100	39,160	0	119,280	113,739	851	14,063	0	111,149	831	2.55	1.29	0.00
19	0	244,422	80,070	39,140	0	119,210	125,212	937	8,360	0	100,492	752	2.31	1.16	0.00
20	0	228,032	80,080	39,100	0	119,180	108,852	814	0	0	102,596	767	2.36	1.19	0.00
21	0	221,306	79,590	39,120	0	118,710	102,596	767	0	0	102,596	767	2.97	1.50	0.00
22	0	247,944	79,080	39,320	0	118,400	129,544	969	0	0	129,544	969	2.46	1.24	0.00
23	0	225,427	78,890	39,350	0	118,240	107,187	802	0	0	107,187	802	2.46	1.24	0.00
24	0	218,533	79,050	39,230	0	118,280	100,253	750	22,393	0	77,860	582	1.79	0.90	0.00
25	0	211,672	79,280	39,440	0	118,720	92,952	695	10,250	0	82,702	619	1.90	0.96	0.00
26	0	191,290	79,210	39,410	0	118,620	72,670	544	0	0	72,670	544	1.67	0.84	0.00
27	0	177,070	79,050	39,140	0	118,190	58,880	440	0	0	58,880	440	1.35	0.68	0.00
28	0	184,832	78,970	39,150	0	118,120	66,712	499	0	0	66,712	499	1.53	0.77	0.00
29	0	197,278	79,150	39,130	0	118,280	78,998	591	20,736	0	58,262	436	1.34	0.67	0.00
30	0	192,092	79,170	39,000	0	118,170	73,922	553	8,425	0	65,497	490	1.50	0.76	0.00
31	0	198,116	79,170	38,910	0	118,080	80,036	599	0	0	80,036	599	1.84	0.93	0.00
Total	0	6,371,517	2,472,230	1,216,290	0	3,688,520	2,662,997	20,070	160,963	3.7	2,522,034	18,866	57.90		

CALIFORNIA-AMERICAN WATER COMPANY  
 Monterey Division 443  
 Upper CV Wells Daily Production Report  
 May 2001

Date	Russell #2	Russell #4	Robles	Panetta #1	Panetta #2	Garzas #3	Garzas #4	LL #5	LL #6	TOTAL CF	TOTAL 1000 G	TOTAL AF
1	80,040	39,340	0	0	0	0	0	0	0	119,380	893	2.74
2	80,020	39,260	0	0	0	0	0	0	0	119,280	892	2.74
3	80,070	39,320	0	0	0	0	0	0	0	119,390	893	2.74
4	80,070	39,380	0	0	0	0	0	0	0	119,450	894	2.74
5	80,030	39,350	0	0	0	0	0	0	0	119,380	893	2.74
6	80,100	39,360	0	0	0	0	0	0	0	119,460	894	2.74
7	80,020	39,280	0	0	0	0	0	0	0	119,300	892	2.74
8	80,010	39,270	0	0	0	0	0	0	0	119,280	892	2.74
9	80,120	39,290	0	0	0	0	0	0	0	119,410	893	2.74
10	80,190	39,330	0	0	0	0	0	0	0	119,520	894	2.74
11	80,030	39,220	0	0	0	10	0	0	0	119,260	892	2.74
12	80,060	39,220	0	0	0	0	0	0	0	119,280	892	2.74
13	80,070	39,260	0	0	0	0	0	0	0	119,330	893	2.74
14	80,140	39,240	0	0	0	0	0	0	0	119,380	893	2.74
15	80,130	39,230	0	0	0	0	0	0	0	119,360	893	2.74
16	80,140	39,180	0	0	0	0	0	0	0	119,320	893	2.74
17	80,130	39,160	0	0	0	0	0	0	0	119,290	892	2.74
18	80,100	39,160	0	0	0	0	0	0	0	119,260	892	2.74
19	80,070	39,140	0	0	0	0	0	0	0	119,210	892	2.74
20	80,080	39,100	0	0	0	0	0	0	0	119,180	892	2.74
21	79,590	39,120	0	0	0	0	0	0	0	118,710	888	2.73
22	79,080	39,320	0	0	0	0	0	0	0	118,400	886	2.72
23	78,890	39,350	0	0	0	0	0	0	0	118,240	884	2.71
24	79,050	39,230	0	0	0	0	0	0	0	118,280	885	2.72
25	79,280	39,440	0	0	0	0	0	0	0	118,720	888	2.73
26	79,210	39,410	0	0	0	0	0	0	0	118,620	887	2.72
27	79,050	39,140	0	0	0	0	0	0	0	118,190	884	2.71
28	78,970	39,150	0	0	0	0	0	0	0	118,120	884	2.71
29	79,150	39,130	0	0	0	0	0	0	0	118,280	885	2.72
30	79,170	39,000	0	0	0	0	0	0	0	118,170	884	2.71
31	79,170	38,910	0	0	0	0	0	0	0	118,080	883	2.71
CF	2,472,230	1,216,290	0	0	0	0	10	0	0	3,688,530	27,592	84.68
1000 G	18,494	9,098	0	0	0	0	0	0	0	27,592		
AF	56.8	27.9	0.0	0.0	0.0	0.0	0.0	0.0	0.0	84.7		

**CALIFORNIA-AMERICAN WATER COMPANY**  
**Monterey Division 443**  
**Lower CV Wells Daily Production Report**  
**May 2001**

Date	Berwick #7	Berwick #8	Begonia	Manor	Schulte	Pearce	Cypress	San Carlos	R. Canada	BIRP * Backwash	L. CV Wells thru BIRP	Scarlett #8	TOTAL CF	TOTAL 1000 G.	TOTAL AF
1	0	156,200	278,300	0	288,300	361,000	279,200	182,800	0	1,315	1,544,485	0	1,544,485	11,554	35.46
2	0	155,700	271,600	0	279,100	344,100	284,800	176,700	79,600	363	1,571,237	0	1,571,237	11,754	36.07
3	0	114,900	251,100	0	274,000	335,300	258,100	172,800	178,100	1,623	1,582,677	0	1,582,677	11,839	36.33
4	0	115,300	284,400	0	281,000	342,500	263,800	174,500	180,900	(2,111)	1,644,511	0	1,644,511	12,302	37.75
5	0	147,200	292,800	0	279,700	340,500	263,300	173,800	179,100	(1,740)	1,678,340	0	1,678,340	12,555	38.53
6	0	157,500	281,100	0	280,000	341,000	263,300	173,700	179,600	(2,434)	1,678,634	0	1,678,634	12,557	38.54
7	0	148,000	261,500	0	280,500	342,500	263,300	174,100	179,100	(17,870)	1,686,870	0	1,686,870	12,489	38.27
8	0	153,800	297,100	0	278,500	339,800	261,300	173,200	175,000	8,640	1,670,060	0	1,670,060	12,493	38.34
9	0	135,400	192,600	0	226,700	290,400	223,900	159,600	191,600	1,445	1,418,755	0	1,418,755	10,613	32.57
10	0	170,800	308,400	0	267,900	327,100	245,700	168,300	162,900	2,936	1,648,164	0	1,648,164	12,329	37.84
11	0	154,300	316,500	0	275,100	334,700	252,100	171,200	167,400	6,011	1,665,289	0	1,665,289	12,457	38.23
12	0	123,100	271,500	0	266,600	343,000	258,100	178,200	178,200	4,195	1,609,705	0	1,609,705	12,041	36.95
13	0	85,100	251,800	0	229,400	347,700	262,700	174,800	183,500	1,446	1,533,554	0	1,533,554	11,472	35.21
14	0	146,500	243,000	0	103,500	360,700	281,800	178,600	193,400	(3,526)	1,510,926	0	1,510,926	11,303	34.69
15	0	97,400	250,300	95,600	0	359,300	285,600	178,000	195,600	(33,503)	1,495,303	0	1,495,303	11,166	34.33
16	0	55,100	168,600	170,200	147,200	340,900	272,700	172,600	165,700	(4,738)	1,497,738	0	1,497,738	11,204	34.38
17	0	0	78,100	136,800	206,600	341,800	275,000	172,400	163,900	166	1,374,434	0	1,374,434	10,281	31.55
18	0	11,700	141,000	160,500	189,000	323,800	260,400	176,500	115,200	136	1,377,964	0	1,377,964	10,308	31.63
19	0	44,400	170,700	161,000	234,500	360,500	278,000	179,300	0	(132)	1,428,532	0	1,428,532	10,686	32.79
20	0	57,800	191,600	160,600	221,700	360,700	278,400	179,100	0	(1,417)	1,451,317	0	1,451,317	10,857	33.32
21	0	84,500	203,800	178,400	255,000	354,800	273,800	177,500	2,300	(5,091)	1,535,191	0	1,535,191	11,484	35.24
22	0	50,700	216,900	166,300	226,200	352,600	278,400	178,800	0	17,263	1,452,637	0	1,452,637	10,866	33.35
23	0	114,100	224,300	246,200	279,700	334,600	269,200	176,000	0	18,258	1,625,842	0	1,625,842	12,162	37.32
24	0	61,600	220,200	179,200	282,500	336,900	272,200	176,800	0	15,793	1,512,607	0	1,512,607	11,315	34.72
25	0	0	145,100	146,900	219,300	351,500	283,700	179,500	0	(15,774)	1,341,774	0	1,341,774	10,037	30.80
26	0	37,100	37,100	69,300	127,000	300,800	304,300	183,100	0	(9,083)	1,030,683	0	1,030,683	7,710	23.66
27	0	0	32,000	30,400	47,400	319,600	297,400	184,800	0	(5,790)	917,390	0	917,390	6,863	21.06
28	0	0	55,400	46,700	127,500	286,400	303,100	183,400	0	(1,466)	1,003,966	0	1,003,966	7,510	23.05
29	0	0	46,400	56,800	137,700	287,800	301,800	182,900	0	(2,670)	1,016,070	0	1,016,070	7,601	23.33
30	0	0	78,400	133,800	179,700	317,100	289,200	180,600	0	(1,151)	1,179,951	0	1,179,951	8,627	27.09
31	0	0	96,300	173,400	197,100	323,300	284,300	179,200	0	16,140	1,237,460	0	1,237,460	9,257	28.41
CF	0	2,541,200	6,157,900	2,312,100	6,688,400	10,402,700	8,249,248	5,468,000	2,871,100	(11,766)	44,702,414	0	44,702,414	334,397	1,026.23
1000 G	0	19,009	46,064	17,296	50,033	77,818	67,709	40,903	21,477	(88)	334,397	0	334,397	1026.2	
AF	0.0	58.3	141.4	53.1	153.5	238.8	189.4	125.5	65.9	(0.3)	1026.2	0.0	1026.2		

\* Backwash is deducted from Lower CV Wells

\*\* Salsdale Prod. Inc. Billion Wal

CALIFORNIA-AMERICAN WATER COMPANY  
 Monterey Division 443  
 CVFP Daily Production Report  
 April 2001

Date	Gravity		Low Flow		Russell #2		Russell #4		To Carmel River		Wells 2 & 4		Division (Less Russell)		Backwash		NET DIVERSION TO SYSTEM			To the River		
	CF		CF		CF		CF		CF		CF		CF	AF	CF	AF	CF	AF	CF	AF	CF	
1	0		119,046		79,860		39,450		119,046		119,046		0	0.0	0	0.0	0	0.0	0	0.0	0.00	(0.00)
2	0		107,601		79,850		39,430		(11,879)		107,601		0	0.0	0	0.0	0	0.0	0	0.0	0.00	(0.14)
3	0		107,722		79,840		39,380		(11,498)		107,722		0	0.0	0	0.0	0	0.0	0	0.0	0.00	(0.13)
4	0		106,002		79,840		39,350		(32,154)		86,976		142	0.4	19,026	0.4	0	0.0	0	0.0	0.00	(0.37)
5	0		111,457		79,730		39,400		(18,660)		100,470		82	0.3	10,987	0.3	0	0.0	0	0.0	0.00	(0.22)
6	0		104,622		79,730		39,310		(24,637)		94,403		76	0.2	10,219	0.2	0	0.0	0	0.0	0.00	(0.29)
7	0		96,851		79,820		39,360		(35,825)		82,355		108	0.3	14,496	0.3	0	0.0	0	0.0	0.00	(0.43)
8	0		105,718		79,800		39,360		(24,718)		94,442		84	0.3	11,276	0.3	0	0.0	0	0.0	0.00	(0.29)
9	0		164,105		79,930		39,430		(39,286)		119,360		335	1.0	27,582	0.5	17,163	0.39	128	0.00	0.39	(0.45)
10	0		101,913		79,790		39,410		(13,501)		79,914		165	0.5	21,999	0.5	0	0.00	0	0.00	0.00	(0.16)
11	0		105,649		79,760		39,390		(13,501)		105,649		0	0.0	0	0.0	0	0.0	0	0.0	0.00	(0.16)
12	0		125,350		79,700		39,450		0		119,150		46	0.1	6,200	0.0	6,200	0.14	46	0.00	0.14	0.00
13	0		143,198		79,770		39,470		0		119,240		179	0.6	23,958	0.0	23,958	0.55	179	0.00	0.55	0.00
14	0		171,022		79,760		39,460		0		119,220		388	1.2	18,674	0.4	33,128	0.76	248	0.00	0.76	0.00
15	0		158,240		79,730		39,430		0		119,160		252	0.9	14,128	0.3	24,952	0.57	187	0.00	0.57	0.00
16	0		129,040		79,660		39,410		0		119,100		74	0.2	274	0.0	9,666	0.22	72	0.00	0.22	0.00
17	0		126,766		79,600		39,380		0		118,980		58	0.2	7,786	0.0	7,786	0.18	58	0.00	0.18	0.00
18	0		119,669		79,660		39,460		0		119,120		549	0.4	16,420	0.0	549	0.01	4	0.00	0.01	0.00
19	0		119,037		79,720		39,500		(16,603)		102,617		123	0.4	16,420	0.4	0	0.00	0	0.00	0.00	(0.19)
20	0		111,472		79,810		39,540		(18,498)		100,852		79	0.2	10,620	0.2	0	0.00	0	0.00	0.00	(0.21)
21	0		119,941		79,860		39,530		0		119,390		4	0.0	123	0.0	428	0.01	3	0.00	0.01	0.00
22	0		122,389		79,920		39,560		0		119,480		22	0.1	2,909	0.0	2,909	0.07	22	0.00	0.07	0.00
23	0		117,842		79,950		39,500		(1,608)		117,842		0	0.0	0	0.0	0	0.00	0	0.00	0.00	(0.02)
24	0		59,822		79,920		39,390		(74,324)		44,986		111	0.3	14,836	0.3	0	0.00	0	0.00	0.00	(0.86)
25	0		80,449		79,900		39,380		(44,555)		74,725		43	0.1	5,724	0.1	0	0.00	0	0.00	0.00	(0.52)
26	0		143,117		79,990		39,410		0		119,400		177	0.5	23,712	0.0	23,712	0.54	177	0.00	0.54	0.00
27	0		144,242		79,940		39,380		0		119,320		186	0.6	24,922	0.0	24,922	0.57	186	0.00	0.57	0.00
28	0		146,651		79,960		39,380		0		119,340		204	0.6	27,311	0.0	27,311	0.63	204	0.00	0.63	0.00
29	0		159,543		80,010		39,400		0		119,410		300	0.9	15,086	0.3	25,047	0.58	187	0.00	0.58	0.00
30	0		148,105		80,020		39,330		0		119,350		215	0.7	8,893	0.2	19,862	0.46	149	0.00	0.46	0.00
31	0								0		0		0	0.0	0	0.0	0	0.00	0	0.00	0.00	0.00
Total	0		3,676,581		2,394,800		1,182,630		368,810		3,208,620		467,981	10.7	220,368	5.1	247,593	5.68	1,852		5.68	

CALIFORNIA-AMERICAN WATER COMPANY  
 Monterey Division 443  
 Upper CV Wells Daily Production Report  
 April 2001

Date	Russell #2	Russell #4	Robles	Panelta #1	Panelta #2	Garzas #3	Garzas #4	LI #5	LI #6	TOTAL CF	TOTAL 1000 G	TOTAL AF
1	79,595	39,450	0	0	0	0	0	0	0	119,045	891	2.73
2	68,171	39,430	0	0	0	0	0	0	0	107,601	805	2.47
3	68,342	39,380	0	0	0	0	0	0	0	107,722	806	2.47
4	47,626	39,350	0	0	0	0	0	0	0	86,976	651	2.00
5	61,070	39,400	0	0	0	0	0	0	0	100,470	752	2.31
6	55,093	39,310	0	0	0	0	0	0	0	94,403	706	2.17
7	42,995	39,360	0	0	0	0	0	0	0	82,355	616	1.89
8	55,082	39,360	0	0	0	0	0	0	0	94,442	706	2.17
9	79,930	39,430	0	0	0	0	0	0	0	119,360	893	2.74
10	40,504	39,410	0	0	0	0	0	0	0	79,914	598	1.83
11	66,259	39,390	0	0	0	0	0	0	0	105,649	790	2.43
12	79,700	39,450	0	0	0	0	0	0	0	119,150	891	2.74
13	79,770	39,470	0	0	0	0	0	0	0	119,220	892	2.74
14	79,760	39,460	0	0	0	0	0	0	0	119,220	892	2.74
15	79,730	39,430	0	0	0	0	0	0	0	119,160	891	2.74
16	79,690	39,410	0	0	0	0	0	0	0	119,100	891	2.73
17	79,600	39,380	0	0	0	0	0	0	0	118,980	890	2.73
18	79,660	39,460	0	0	0	0	0	0	0	119,120	891	2.73
19	63,117	39,500	0	0	0	0	0	0	0	102,617	768	2.36
20	61,312	39,540	0	0	0	0	0	0	0	100,852	754	2.32
21	79,860	39,530	0	0	0	0	0	0	0	119,390	893	2.74
22	79,920	39,560	0	0	0	0	0	0	0	119,480	894	2.74
23	78,342	39,500	0	0	0	0	0	0	0	117,842	882	2.71
24	5,596	39,390	0	0	0	0	0	0	0	44,986	337	1.03
25	35,345	39,380	0	0	0	0	0	0	0	74,725	559	1.72
26	79,990	39,410	0	0	0	0	0	0	0	119,400	893	2.74
27	79,940	39,380	0	0	0	0	0	0	0	119,320	893	2.74
28	79,960	39,380	0	0	0	0	0	0	0	119,340	893	2.74
29	80,010	39,400	0	0	0	0	0	0	0	119,410	893	2.74
30	80,020	39,330	0	0	0	0	0	0	0	119,350	893	2.74
31			0	0	0	0	0	0	0	0	0	0.00
CF	2,025,990	1,182,530	0	0	0	0	0	0	0	3,208,520	24,002	75.66
1000 G	15,155	8,847	0	0	0	0	0	0	0	24,002		
AF	46.5	27.1	0.0	0.0	0.0	0.0	0.0	0.0	0.0	73.7		

CALIFORNIA-AMERICAN WATER COMPANY  
 Monterey Division 443  
 Lower CV Wells Daily Production Report  
 April 2001

Date	Berwick #7	Berwick #8	Begonia	Manor	Schulte	Pearce	Cypress	San Carlos	R. Canada	BIRP * Backwash	L CV Wells thru BIRP	Scarlett #8	TOTAL CF	TOTAL 1000 G	TOTAL AF
1	0	0	250,300	0	256,800	342,600	271,300	177,900	186,100	(4,623)	1,489,423	0	1,489,423	11,142	34.19
2	0	44,100	235,300	0	228,500	331,100	281,700	177,900	188,500	(631)	1,468,031	100	1,468,031	10,982	33.70
3	0	71,000	244,500	0	264,000	320,900	255,900	167,800	171,200	(4,490)	1,499,790	0	1,499,790	11,219	34.43
4	0	7,500	142,300	0	167,500	277,200	233,500	165,800	215,500	2,698	1,206,602	0	1,206,602	9,026	27.70
5	0	98,800	291,500	0	252,900	326,500	288,900	188,300	172,400	(12,540)	1,580,940	0	1,580,940	11,826	36.29
6	0	41,500	305,400	0	263,800	321,300	283,400	166,400	160,200	5,968	1,506,032	100	1,506,132	11,267	34.58
7	0	24,900	254,400	0	280,300	341,800	270,800	176,400	180,400	(7,094)	1,536,094	0	1,536,094	11,491	35.26
8	0	0	212,600	0	208,700	346,100	275,800	178,700	192,200	(1,342)	1,415,442	0	1,415,442	10,588	32.49
9	0	0	113,300	0	154,600	312,300	277,600	180,700	186,800	(22,837)	1,248,137	0	1,248,137	9,337	28.65
10	0	500	85,400	0	105,100	341,500	277,400	182,500	210,700	9,791	1,193,309	0	1,193,309	8,927	27.39
11	0	0	93,100	0	153,500	357,000	281,100	180,100	199,100	(10,443)	1,274,343	0	1,274,343	9,533	29.25
12	0	0	198,200	0	213,200	305,100	279,900	178,500	196,000	5,052	1,365,948	0	1,365,948	10,218	31.36
13	0	43,700	221,100	0	242,500	362,000	286,000	183,100	70,900	(3,902)	1,413,202	0	1,413,202	10,571	32.44
14	0	71,700	233,300	0	247,000	370,200	293,000	185,400	0	12,919	1,387,681	0	1,387,681	10,381	31.86
15	0	79,000	195,400	0	267,500	366,300	289,000	184,900	0	(8,881)	1,395,581	0	1,395,581	10,440	32.04
16	0	114,300	251,700	0	287,900	366,300	289,000	184,100	0	7,649	1,465,651	0	1,465,651	10,964	33.65
17	0	132,600	235,700	0	237,000	284,400	233,200	151,500	0	(25,651)	1,310,051	0	1,310,051	9,800	30.07
18	0	151,900	299,700	0	288,200	360,800	283,800	183,200	0	11,048	1,561,852	0	1,561,852	11,683	35.86
19	100	157,200	316,100	0	282,600	355,900	283,800	183,200	0	(10,851)	1,589,651	0	1,589,651	11,891	36.49
20	0	91,200	274,900	0	288,700	381,500	286,200	184,000	0	8,447	1,500,053	0	1,500,053	11,221	34.44
21	0	78,400	40,900	0	207,800	378,500	299,300	187,100	0	(9,219)	1,387,410	0	1,387,410	10,379	31.95
22	0	96,500	181,000	0	229,100	369,600	291,800	185,100	0	9,130	1,182,870	0	1,182,870	8,848	27.15
23	0	136,700	243,900	0	226,900	373,000	293,800	185,700	0	(4,083)	1,357,283	0	1,357,283	10,153	31.16
24	0	154,900	219,500	0	235,200	369,700	291,300	185,000	0	(15,817)	1,377,917	0	1,377,917	10,308	31.63
25	0	76,000	192,100	0	230,500	371,100	292,900	184,100	0	10,637	1,451,163	0	1,451,163	10,855	33.31
26	0	104,900	204,100	0	292,000	365,200	287,500	184,300	0	(32,200)	1,498,500	0	1,498,500	11,210	34.40
27	0	159,000	225,700	0	227,800	381,900	220,500	185,500	0	(7,994)	1,355,194	0	1,355,194	10,138	31.11
28	0	163,600	285,100	0	290,000	363,500	281,000	183,300	0	1,533	1,436,467	0	1,436,467	10,746	32.99
29	0	0	0	0	0	0	0	0	0	(1,232)	1,401,632	0	1,401,632	10,485	32.18
30	0	0	0	0	0	0	0	0	0	8,465	1,558,035	0	1,558,035	11,655	35.77
31	0	0	0	0	0	0	0	0	0	0	0	0	0	0	0.00
CF	100	2,351,100	5,383,000	0	7,113,500	10,469,400	7,537,366	5,397,200	2,330,000	(90,683)	41,666,349	200	41,666,549	311,687	956.53
1000 G	1	17,587	47,748	0	53,213	78,317	56,383	40,329	17,430	(678)	311,686	1	311,687	956.5	
AF	0.0	54.0	146.5	0.0	163.3	240.3	173.0	123.8	53.5	(2.1)	956.5	0.0	956.5		

\*\* Meter @ Cemetery (600,567) + Meter @ Font Out (48,661) + Old Grove Meter (87,867)

\* Backwash is deducted from Lower CV Wells



CALIFORNIA-AMERICAN WATER COMPANY  
 Monterey Division 443  
 CVFP Daily Production Report  
 March 2001

Date	Gravity CF	Low Flow CF	Russell #2 CF	Russell #4 CF	To Channel River	Wells 2 & 4	Diversion (Less Russell)		Backwash		NET DIVERSION TO SYSTEM			To the River	
							CF	AF	CF	AF	CF	AF	CF	AF	CF
1	0	110,196	81,400	32,430	(5,739)	108,091	2,105	0.0	2,105	0.0	0	0	0.00	0.00	(0.07)
2	0	120,520	81,370	32,380	0	113,750	6,770	0.2	0	0.0	0	6,770	0.16	0.08	0.00
3	0	122,851	81,410	32,390	0	113,800	9,051	0.2	0	0.0	0	9,051	0.21	0.10	0.00
4	0	124,461	81,000	32,620	(9,283)	104,337	20,124	0.5	20,124	0.5	0	0	0.00	0.00	(0.11)
5	0	90,726	81,080	33,160	(23,514)	90,726	0	0.0	0	0.0	0	0	0.00	0.00	(0.27)
6	0	36,355	81,230	33,160	(78,035)	36,355	0	0.0	0	0.0	0	0	0.00	0.00	(0.90)
7	0	34,357	81,290	33,130	(80,063)	34,357	0	0.0	0	0.0	0	0	0.00	0.00	(0.93)
8	0	34,576	81,380	33,090	(79,894)	34,576	0	0.0	0	0.0	0	0	0.00	0.00	(0.92)
9	0	26,058	81,340	33,000	(88,282)	26,058	0	0.0	0	0.0	0	0	0.00	0.00	(1.02)
10	0	27,589	81,220	32,940	(86,571)	27,589	0	0.0	0	0.0	0	0	0.00	0.00	(1.00)
11	0	29,798	81,180	32,870	(84,252)	29,798	0	0.0	0	0.0	0	0	0.00	0.00	(0.98)
12	0	35,378	81,000	32,730	(78,352)	35,378	0	0.0	0	0.0	0	0	0.00	0.00	(0.91)
13	0	50,452	80,850	32,520	(62,878)	50,452	0	0.0	0	0.0	0	0	0.00	0.00	(0.73)
14	0	61,179	80,810	32,450	(52,081)	61,179	0	0.0	0	0.0	0	0	0.00	0.00	(0.60)
15	0	54,896	80,770	32,550	(75,593)	37,727	17,169	0.4	17,169	0.4	0	0	0.00	0.00	(0.87)
16	0	48,590	80,720	32,610	(64,740)	48,590	0	0.0	0	0.0	0	0	0.00	0.00	(0.75)
17	0	50,854	80,680	32,680	(62,506)	50,854	0	0.0	0	0.0	0	0	0.00	0.00	(0.72)
18	0	51,885	80,620	32,760	(61,495)	51,885	0	0.0	0	0.0	0	0	0.00	0.00	(0.71)
19	0	51,407	80,690	32,750	(62,033)	51,407	0	0.0	0	0.0	0	0	0.00	0.00	(0.72)
20	0	49,996	80,780	32,750	(81,576)	31,954	18,042	0.4	18,042	0.4	0	0	0.00	0.00	(0.94)
21	0	51,515	80,790	32,770	(62,045)	51,515	0	0.0	0	0.0	0	0	0.00	0.00	(0.72)
22	0	53,152	80,840	32,770	(60,456)	53,152	0	0.0	0	0.0	0	0	0.00	0.00	(0.70)
23	0	58,163	80,950	32,780	(55,567)	58,163	0	0.0	0	0.0	0	0	0.00	0.00	(0.64)
24	0	74,821	80,860	32,740	(38,779)	74,821	0	0.0	0	0.0	0	0	0.00	0.00	(0.45)
25	0	66,865	80,880	32,740	(64,365)	49,255	17,610	0.4	17,610	0.4	0	0	0.00	0.00	(0.74)
26	0	80,263	80,500	34,960	(35,197)	80,263	0	0.0	0	0.0	0	0	0.00	0.00	(0.41)
27	0	106,991	79,700	39,990	(12,699)	106,991	0	0.0	0	0.0	0	0	0.00	0.00	(0.15)
28	0	112,416	79,700	39,840	(7,124)	112,416	0	0.0	0	0.0	0	0	0.00	0.00	(0.08)
29	0	108,206	79,740	39,810	(11,344)	108,206	0	0.0	0	0.0	0	0	0.00	0.00	(0.13)
30	0	112,431	79,690	39,750	(20,395)	99,045	13,386	0.3	13,386	0.3	0	0	0.00	0.00	(0.24)
31	0	121,912	79,750	39,570	0	119,320	2,592	0.1	0	0.0	19	2,592	0.06	0.03	0.00
Total	0	2,158,899	2,504,220	1,052,690	(1,504,860)	2,052,050	106,849	2.5	88,456	2.0	138	18,413	0.42		

CALIFORNIA-AMERICAN WATER COMPANY  
 Monterey Division 443  
 Upper CV Wells Daily Production Report  
 March 2001

Date	Russell #2	Russell #4	Robles	Panetta #1	Panetta #2	Garzas #3	Garzas #4	LL #5	LL #6	TOTAL CF	TOTAL 1000 G	TOTAL AF
1	75,661	32,430	0	0	0	0	0	0	0	108,091	809	2.48
2	81,370	32,380	0	0	0	0	0	0	0	113,750	851	2.61
3	81,410	32,390	0	0	0	0	0	0	0	113,800	851	2.61
4	71,717	32,620	0	0	0	10	0	0	10	104,367	781	2.40
5	57,566	33,160	0	0	0	0	0	0	0	90,726	679	2.08
6	3,195	33,160	0	0	0	0	0	0	0	36,355	272	0.83
7	1,227	33,130	0	0	0	0	0	0	0	34,357	257	0.79
8	1,486	33,090	0	0	0	0	0	0	0	34,576	259	0.79
9	0	26,058	0	0	0	0	0	0	0	26,058	195	0.60
10	0	27,589	0	0	0	0	0	0	0	27,589	206	0.63
11	0	29,798	0	0	0	0	0	0	0	29,798	223	0.68
12	2,648	32,730	0	0	0	0	0	0	0	35,378	265	0.81
13	17,972	32,520	0	0	0	0	0	0	0	50,492	378	1.16
14	28,729	32,450	0	0	0	0	0	0	0	61,179	458	1.40
15	5,177	32,550	0	0	0	0	0	0	0	37,727	282	0.87
16	15,980	32,610	0	0	0	0	0	0	0	48,590	363	1.12
17	18,174	32,680	0	0	0	0	0	0	0	50,854	380	1.17
18	19,125	32,760	0	0	0	0	0	0	0	51,885	388	1.19
19	18,657	32,750	0	0	0	0	0	0	0	51,407	385	1.18
20	0	31,954	0	0	0	0	0	0	0	31,954	239	0.73
21	18,745	32,770	0	360	350	0	0	40	20	52,285	391	1.20
22	20,382	32,770	0	0	0	0	0	0	0	53,152	398	1.22
23	25,383	32,780	0	0	0	0	0	0	0	58,163	435	1.34
24	42,081	32,740	0	0	0	0	0	0	0	74,821	560	1.72
25	16,515	32,740	0	0	0	0	0	0	0	49,255	368	1.13
26	45,303	34,960	0	0	0	0	10	0	0	80,273	600	1.84
27	67,001	39,890	0	0	0	0	0	0	0	106,991	800	2.46
28	72,576	39,840	0	0	0	0	0	0	0	112,416	841	2.58
29	68,396	39,810	0	0	0	0	0	0	0	108,206	809	2.48
30	59,295	38,750	0	0	0	0	0	0	0	99,045	741	2.27
31	79,750	39,570	0	0	0	0	0	0	0	119,320	893	2.74
CF	1,015,521	1,036,529	0	360	350	10	20	40	30	2,052,860	15,356	47.13
1000 G	7,597	7,754	0	3	3	0	0	0	0	15,356		
AF	23.3	23.8	0.0	0.0	0.0	0.0	0.0	0.0	0.0	47.1		

CALIFORNIA-AMERICAN WATER COMPANY  
 Monterey Division 443  
 Lower CV Wells Daily Production Report  
 March 2001

Date	Berwick #7	Berwick #8	Begonia	Manor	Schulte	Peace	Cypress	San Carlos	R. Canada	BRP * Backwash	L CV Wells thru BRP	Scarlett #8	TOTAL CF	TOTAL 1000 G	TOTAL AF
1	0	0	104,700	67,300	54,800	264,800	298,900	185,200	245,100	(7,361)	1,228,161	0	1,228,161	9,187	28.19
2	0	0	30,200	27,400	59,500	270,900	300,800	185,700	246,000	(2,542)	1,123,042	0	1,123,042	8,401	25.78
3	0	0	0	14,900	53,500	294,900	281,200	185,500	243,800	(10,458)	1,084,058	0	1,084,058	8,109	24.89
4	0	0	101,300	48,400	130,500	231,300	273,800	182,500	233,900	(19,953)	1,221,653	0	1,221,653	9,139	28.05
5	0	0	110,900	43,500	133,900	255,300	288,100	184,400	229,000	28,082	1,217,018	0	1,217,018	9,104	27.94
6	0	0	11,900	6,100	134,200	321,100	268,900	179,700	231,000	(8,996)	1,161,896	0	1,161,896	8,692	26.67
7	0	0	118,200	45,200	161,400	301,100	281,000	182,400	217,000	(5,086)	1,311,386	0	1,311,386	9,810	30.11
8	0	0	62,300	25,000	95,500	291,800	274,800	186,100	234,100	(15,402)	1,185,002	0	1,185,002	8,864	27.20
9	0	0	0	20,800	334,300	279,600	279,600	186,300	232,200	(705)	1,147,503	0	1,147,503	8,584	26.34
10	0	0	34,500	0	134,900	312,900	288,800	185,000	227,100	9,944	1,173,256	0	1,173,256	8,777	26.93
11	0	0	141,300	0	157,900	315,700	284,600	182,200	215,200	(37,784)	1,334,684	0	1,334,684	9,984	30.64
12	0	0	129,300	0	148,000	336,300	288,000	182,800	215,200	5,707	1,293,693	100	1,293,793	9,678	29.70
13	0	0	120,000	0	147,200	339,900	278,200	184,600	182,300	1,624	1,250,576	0	1,250,576	9,355	28.71
14	0	0	83,500	0	92,600	227,600	261,900	178,700	239,600	(6,657)	1,090,557	0	1,090,557	8,158	25.04
15	0	0	192,200	0	164,600	213,000	176,300	112,900	220,100	(3,006)	1,082,106	0	1,082,106	8,095	24.84
16	0	0	225,800	0	223,000	346,300	276,500	180,300	199,900	(4,380)	1,455,180	0	1,455,180	10,886	33.41
17	0	0	154,100	0	202,200	310,800	273,000	181,700	209,300	(1,117)	1,332,217	0	1,332,217	9,966	30.58
18	0	0	0	0	151,900	287,700	276,100	183,600	218,900	(67)	1,192,967	0	1,192,967	8,924	27.39
19	0	0	208,300	0	189,100	321,800	270,400	181,100	204,700	6,161	1,369,239	0	1,369,239	10,243	31.43
20	0	0	211,600	0	246,400	343,800	276,700	175,900	52,300	(1,339)	1,308,039	0	1,308,039	9,785	30.03
21	0	0	194,200	0	291,800	367,900	298,100	187,400	0	8,281	1,331,119	0	1,331,119	9,957	30.56
22	0	0	208,000	0	211,100	377,400	305,600	187,700	0	623	1,289,177	0	1,289,177	9,644	29.60
23	0	0	226,400	0	291,300	367,500	297,200	186,800	0	(2,720)	1,371,920	0	1,371,920	10,263	31.49
24	0	0	204,500	0	235,500	376,300	304,200	187,100	0	2,036	1,305,564	0	1,305,564	9,766	29.97
25	0	0	280,100	0	291,600	367,600	297,200	186,400	0	3,027	1,419,873	0	1,419,873	10,621	32.60
26	0	85,800	251,500	0	248,100	366,100	296,600	185,300	0	(1,280)	1,434,680	0	1,434,680	10,732	32.94
27	0	112,300	212,200	0	218,100	368,800	298,400	185,300	0	(1,749)	1,396,849	0	1,396,849	10,449	32.07
28	0	98,400	295,600	0	360,100	360,100	291,600	184,600	0	(8,895)	1,518,395	0	1,518,395	11,359	34.86
29	0	59,200	156,800	0	279,200	344,700	277,800	180,900	74,300	(2,142)	1,344,142	100	1,518,495	10,055	30.86
30	0	25,200	200,000	0	248,300	356,200	282,300	181,300	119,800	6,053	1,377,647	0	1,377,647	10,306	31.63
31	0	30,600	226,800	0	279,700	340,800	269,300	177,200	184,300	7,106	1,501,594	0	1,501,594	11,233	34.47
CF	0	411,500	4,570,900	298,600	5,589,300	9,914,500	7,535,220	5,616,600	4,672,900	(62,953)	38,672,573	200	38,672,773	289,292	887.80
1000 G	0	3,078	34,193	2,234	41,811	74,166	56,367	42,015	34,956	(471)	289,291	1	289,292	887.8	
AF	0.0	9.4	104.9	6.9	128.3	227.6	173.0	128.9	107.3	(1.4)	887.8	0.0	887.8		

\* Backwash is deducted from Lower CV Wells  
 \*\* 101 (886,289) + 201(390,342)

CALIFORNIA-AMERICAN WATER COMPANY  
 Monterey Division 443  
 CVFP Daily Production Report  
 February 2001

Date	Gravity		Low Flow		Russell #2		Russell #4		To Camel		Wells 2 & 4		Division (Less Russell)		Backwash		NET DIVERSION TO SYSTEM				To the River			
	CF	CF	CF	CF	CF	CF	DF	RNet	CF	RNet	CF	AF	CF	AF	CF	AF	CF	AF	CF	AF	CF	AF	CF	AF
1	0	118,359	81,150	32,510	0	113,660	32,510	0	0	0.1	35	4,699	0.0	0.0	0	0	0.05	0.11	4,699	35	0.00	0.00	0.00	0.00
2	0	123,949	81,230	32,540	(6,984)	106,786	32,540	(6,984)	0	0.4	128	17,163	0.4	0.4	17,163	0	0.00	0.00	0	0	0.00	0.00	0.00	0.00
3	0	122,722	81,150	32,500	(749)	112,901	32,500	(749)	0	0.2	73	9,821	0.2	0.2	9,821	0	0.00	0.00	0	0	0.00	0.00	0.00	0.00
4	0	122,614	81,050	32,480	0	113,530	32,480	0	0	0.2	68	9,084	0.0	0.0	9,084	68	0.21	0.21	9,084	68	0.11	0.11	0.00	0.00
5	0	123,763	81,030	32,490	0	113,520	32,490	0	0	0.2	77	10,243	0.0	0.0	10,243	77	0.24	0.24	10,243	77	0.12	0.12	0.00	0.00
6	0	111,746	80,990	32,520	(1,764)	111,746	32,520	(1,764)	0	0.0	0	0	0.0	0.0	0	0	0.00	0.00	0	0	0.00	0.00	0.00	0.00
7	0	110,629	80,980	32,520	(21,568)	91,912	32,520	(21,568)	0	0.4	140	18,717	0.4	0.4	18,717	0	0.00	0.00	0	0	0.00	0.00	0.00	0.00
8	0	99,643	80,880	32,510	(16,230)	97,160	32,510	(16,230)	0	0.1	19	2,483	0.1	0.1	2,483	0	0.00	0.00	0	0	0.00	0.00	0.00	0.00
9	0	117,655	80,900	32,450	(10,709)	113,350	32,450	(10,709)	0	0.1	32	4,305	0.0	0.0	1,089	24	0.07	0.07	3,216	24	0.04	0.04	0.00	0.00
10	0	102,781	81,000	32,490	0	102,781	32,490	0	0	0.0	0	7,786	0.0	0.0	0	0	0.00	0.00	7,786	58	0.18	0.09	0.00	0.00
11	0	121,426	81,100	32,540	0	113,640	32,540	0	0	0.2	58	7,786	0.0	0.0	0	0	0.00	0.00	0	0	0.00	0.00	0.00	0.00
12	0	120,997	81,120	32,560	(9,460)	104,220	32,560	(9,460)	0	0.4	126	16,777	0.4	0.4	16,777	0	0.00	0.00	0	0	0.00	0.00	0.00	0.00
13	0	124,597	81,180	32,540	0	113,720	32,540	0	0	0.2	81	10,877	0.2	0.2	10,076	6	0.02	0.02	801	6	0.01	0.01	0.00	0.00
14	0	124,608	81,170	32,540	0	113,720	32,540	0	0	0.3	82	10,898	0.0	0.0	10,076	82	0.25	0.25	10,898	82	0.13	0.13	0.00	0.00
15	0	124,517	81,180	32,510	0	113,720	32,510	0	0	0.2	81	10,797	0.0	0.0	10,797	81	0.25	0.25	10,797	81	0.12	0.12	0.00	0.00
16	0	107,168	81,170	32,510	(6,512)	107,168	32,510	(6,512)	0	0.0	0	0	0.0	0.0	0	0	0.00	0.00	0	0	0.00	0.00	0.00	0.00
17	0	117,172	81,150	32,490	(14,849)	98,791	32,490	(14,849)	0	0.4	137	18,381	0.4	0.4	18,381	0	0.00	0.00	0	0	0.00	0.00	0.00	0.00
18	0	129,864	81,110	32,460	0	113,570	32,460	0	0	0.4	122	16,294	0.2	0.2	9,418	51	0.16	0.16	6,876	51	0.08	0.08	0.00	0.00
19	0	119,747	81,140	32,460	0	113,600	32,460	0	0	0.1	46	6,147	0.0	0.0	1,630	34	0.10	0.10	4,517	34	0.05	0.05	0.00	0.00
20	0	144,252	81,290	32,510	0	113,800	32,510	0	0	0.7	228	30,452	0.0	0.0	0	228	0.70	0.70	30,452	228	0.35	0.35	0.00	0.00
21	0	95,691	81,260	32,470	(18,039)	95,691	32,470	(18,039)	0	0.0	0	0	0.0	0.0	0	0	0.00	0.00	0	0	0.00	0.00	0.00	0.00
22	0	104,847	81,360	32,490	(28,674)	85,176	32,490	(28,674)	0	0.5	147	19,671	0.5	0.5	19,671	0	0.00	0.00	0	0	0.00	0.00	0.00	0.00
23	0	121,920	81,360	32,490	(2,227)	111,623	32,490	(2,227)	0	0.2	77	10,297	0.2	0.2	10,297	0	0.00	0.00	0	0	0.00	0.00	0.00	0.00
24	0	138,840	81,360	32,490	0	113,850	32,490	0	0	0.5	187	24,990	0.0	0.0	10,297	187	0.29	0.29	24,990	187	0.13	0.13	0.00	0.00
25	0	124,974	81,380	32,500	0	113,880	32,500	0	0	0.3	83	11,094	0.0	0.0	0	83	0.25	0.25	11,094	83	0.11	0.11	0.00	0.00
26	0	123,446	81,420	32,520	0	113,940	32,520	0	0	0.2	71	9,506	0.0	0.0	0	71	0.22	0.22	9,506	71	0.00	0.00	0.00	0.00
27	0	112,517	81,350	32,470	(21,376)	92,444	32,470	(21,376)	0	0.5	150	20,073	0.5	0.5	20,073	0	0.00	0.00	6,790	51	0.16	0.16	0.00	0.00
28	0	123,673	81,340	32,480	0	113,820	32,480	0	0	0.0	74	9,853	0.0	0.0	3,063	0	0.00	0.00	0	0	0.00	0.00	0.00	0.00
29	0	0	0	0	0	0	0	0	0	0.0	0	0	0.0	0.0	0	0	0.00	0.00	0	0	0.00	0.00	0.00	0.00
30	0	0	0	0	0	0	0	0	0	0.0	0	0	0.0	0.0	0	0	0.00	0.00	0	0	0.00	0.00	0.00	0.00
31	0	0	0	0	0	0	0	0	0	0.0	0	0	0.0	0.0	0	0	0.00	0.00	0	0	0.00	0.00	0.00	0.00
Total	0	3,334,117	2,272,780	910,070	(159,141)	3,023,709	910,070	(159,141)	0	7.1	2,322	310,408	3.6	3.6	158,658	1,135	3.48	151,749	1,135	3.48	0.00	0.00	0.00	0.00

CALIFORNIA-AMERICAN WATER COMPANY  
 Monterey Division 443  
 Upper CV Wells Daily Production Report  
 February 2001

Date	Russell #2	Russell #4	Robles	Panetta #1	Panetta #2	Garzas #3	Garzas #4	LL #5	LL #6	TOTAL CF	TOTAL 1000 G	TOTAL AF
1	81,150	32,510	0	0	0	0	0	0	0	113,660	850	2.61
2	74,246	32,540	0	0	0	0	0	0	0	106,786	799	2.45
3	80,401	32,500	0	0	0	0	0	0	0	112,901	845	2.59
4	81,050	32,480	0	0	0	0	0	0	0	113,530	849	2.61
5	81,030	32,490	0	0	0	0	0	0	0	113,520	849	2.61
6	79,226	32,520	0	0	0	0	0	0	0	111,746	836	2.57
7	59,392	32,520	0	0	0	0	0	0	0	91,912	688	2.11
8	64,650	32,510	0	0	0	0	0	0	0	97,160	727	2.23
9	80,900	32,450	0	0	0	0	0	0	0	113,350	848	2.60
10	70,291	32,490	0	0	0	0	0	0	0	102,781	769	2.36
11	81,100	32,540	0	0	0	0	0	10	0	113,640	850	2.61
12	71,660	32,560	0	0	0	0	0	0	0	104,240	780	2.39
13	81,180	32,540	0	0	0	0	0	0	0	113,720	851	2.61
14	81,170	32,540	0	0	0	0	0	0	0	113,710	851	2.61
15	81,180	32,540	0	0	0	0	0	0	0	113,720	851	2.61
16	74,658	32,510	0	0	0	0	0	0	0	107,168	802	2.46
17	66,301	32,490	0	0	0	0	0	0	0	98,791	739	2.27
18	81,110	32,460	0	0	0	0	0	0	0	113,570	850	2.61
19	81,140	32,460	0	0	0	0	0	0	0	113,600	850	2.61
20	81,290	32,510	0	0	0	240	0	0	0	114,040	853	2.62
21	63,221	32,470	0	0	0	1,670	0	0	0	97,361	728	2.24
22	52,686	32,490	0	0	0	0	0	0	0	85,176	637	1.96
23	79,133	32,490	0	0	1,480	0	0	0	0	113,103	846	2.60
24	81,360	32,490	0	0	0	0	0	0	0	113,850	852	2.61
25	81,380	32,500	0	0	0	0	0	0	0	113,880	852	2.61
26	81,420	32,520	0	0	0	0	0	0	0	113,940	852	2.62
27	59,974	32,470	0	0	0	0	0	0	0	92,444	692	2.12
28	81,340	32,480	0	0	0	0	10	0	0	113,830	852	2.61
29			0	0	0	0	0	0	0	0	0	0.00
30			0	0	0	0	0	0	0	0	0	0.00
31			0	0	0	0	0	0	0	0	0	0.00
CF	2,113,639	910,070	0	0	1,480	1,910	10	10	0	3,027,129	22,644	69.49
1000 G	15,811	6,808	0.0	0.0	11	14	0.0	0.0	0.0	22,644		
AF	48.5	20.9			0.0	0.0	0.0	0.0	0.0	69.5		

**CALIFORNIA-AMERICAN WATER COMPANY**  
**Monterey Division 443**  
**Lower CV Wells Daily Production Report**  
**February 2001**

Date	Berwick #7	Berwick #8	Begonia	Manor	Schulte	Peatce	Cypress	San Carlos	R. Canada	BIRP * Backwash	L. CV Wells thru BIRP	Scrublet #8	TOTAL CF	TOTAL 1000 G	TOTAL AF
1	0	0	24,400	22,300	56,700	262,900	292,500	188,000	268,500	4,882	1,110,518	0	1,110,518	8,307	25.49
2	0	0	145,700	76,700	180,800	263,300	272,300	181,200	248,400	6,617	1,361,783	0	1,361,783	10,187	31.26
3	0	0	124,700	56,200	156,600	293,500	293,600	181,600	246,400	(5,037)	1,357,637	0	1,357,637	10,156	31.17
4	0	0	132,400	51,700	127,800	211,900	299,400	184,400	259,600	105	1,267,095	0	1,267,095	9,479	29.09
5	0	0	173,700	70,400	65,300	268,500	266,900	184,700	263,300	7,342	1,285,458	0	1,285,458	9,616	29.51
6	0	0	32,100	17,400	29,200	262,400	308,600	188,200	271,300	2,862	1,106,338	0	1,106,338	8,276	25.40
7	0	0	83,900	42,800	121,100	268,600	285,300	182,600	256,200	210	1,240,290	0	1,240,290	9,278	28.47
8	0	0	97,700	39,500	134,000	266,800	288,800	182,300	253,000	(18,279)	1,280,379	0	1,280,379	9,578	29.39
9	0	0	0	16,100	128,700	264,400	260,500	184,200	264,400	(14,056)	1,132,356	0	1,132,356	8,471	26.00
10	0	0	31,900	15,400	56,700	262,500	288,600	186,900	266,500	(2,432)	1,110,932	0	1,110,932	8,310	25.50
11	0	0	34,300	19,800	53,700	281,000	267,800	186,500	264,100	517	1,106,683	0	1,106,683	8,279	25.41
12	0	0	106,800	45,000	114,500	255,600	269,000	185,700	244,200	4,176	1,216,624	0	1,216,624	9,101	27.93
13	0	0	69,600	32,700	88,100	260,800	304,900	187,800	266,900	35,397	1,134,903	0	1,134,903	8,490	26.05
14	0	0	37,700	16,900	47,300	256,500	304,900	187,800	266,900	(25,317)	1,143,317	0	1,143,317	8,553	26.25
15	0	0	0	0	70,500	284,100	289,200	187,400	267,000	(5,228)	1,083,428	0	1,083,428	8,105	24.87
16	0	0	72,800	29,600	97,000	263,100	263,100	185,500	261,900	(6,477)	1,175,677	0	1,175,677	8,785	26.59
17	0	0	29,200	17,000	48,500	250,400	288,700	187,100	267,400	(6,831)	1,095,131	0	1,095,131	8,192	25.14
18	0	0	31,800	15,600	78,000	232,700	271,400	186,500	268,100	(2,442)	1,086,542	0	1,086,542	8,128	24.94
19	0	0	114,900	44,700	112,500	245,100	274,400	183,700	256,400	1,710	1,229,990	0	1,229,990	9,201	28.24
20	0	0	8,800	12,400	89,500	195,900	298,400	187,100	269,200	4,601	1,056,699	0	1,056,699	7,905	24.26
21	0	0	37,400	17,100	73,100	260,000	304,600	186,100	259,700	(3,809)	1,141,809	0	1,141,809	8,541	26.21
22	0	0	0	7,100	38,000	307,400	277,600	187,300	264,000	14,895	1,066,505	0	1,066,505	7,978	24.48
23	0	0	0	6,700	24,100	253,400	308,600	188,200	269,100	(16,957)	1,067,067	0	1,067,067	7,982	24.50
24	0	0	25,100	13,300	37,400	240,400	271,500	188,300	271,700	147	1,047,553	0	1,047,553	7,836	24.05
25	0	0	27,800	15,300	42,900	225,200	306,800	188,000	268,700	(4,095)	1,078,795	0	1,078,795	8,070	24.77
26	0	0	110,200	45,200	127,800	227,600	285,300	185,200	238,700	3,640	1,216,360	0	1,216,360	9,099	27.92
27	0	0	12,400	38,100	125,600	268,100	293,000	183,800	253,600	1,862	1,172,738	0	1,172,738	8,773	26.92
28	0	0	23,200	21,200	59,000	284,900	278,700	186,400	254,000	4,969	1,102,431	0	1,102,431	8,247	25.31
29	0	0	0	0	0	0	0	0	0	0	0	0	0	0	0.00
30	0	0	0	0	0	0	0	0	0	0	0	0	0	0	0.00
31	0	0	0	0	0	0	0	0	0	0	0	0	0	0	0.00
CF	0	0	1,588,500	806,200	2,384,400	7,214,200	6,676,759	5,200,400	7,299,900	(16,036)	31,186,395	0	31,186,395	233,290	715.94
1000 G	0	0	11,883	6,031	17,837	53,966	49,946	38,902	54,607	(120)	233,290	0	233,290	0	0.00
AF	0.0	0.0	36.5	18.5	54.7	165.6	153.3	119.4	167.6	(0.4)	715.9	0.0	715.9	0.0	0.00

\* Backwash is deducted from Lower CV Wells

\*\* Saddle Peak Production Well (Unit 20)  
 \*\* 181 (965,299 & 201 (989,342)

CALIFORNIA-AMERICAN WATER COMPANY  
 Monterey Division 443  
 CVFP Daily Production Report  
 January 2001

Date	Gravity CF	Low Flow CF	Russell #2		Russell #4		To Carmel River	Wells 2 & 4		Diversion (Less Russell)		Backwash		NET DIVERSION TO SYSTEM			To the River CFS
			CF	CF	CF	CF		CF	AF	CF	AF	CF	AF	CF	AF	CF	
1	0	83,545	80,070	32,340	(38,639)	73,771	9,774	73	0.2	9,774	0.2	9,774	0.2	0	0.00	0.00	(0.45)
2	0	132,423	80,170	32,380	0	112,550	19,873	149	0.5	2,980	0.1	2,980	0.1	125	0.39	0.70	0.00
3	0	165,178	80,000	32,310	0	112,310	52,868	395	1.2	22,886	0.5	22,886	0.5	224	0.69	0.35	0.00
4	0	165,461	80,010	32,300	0	112,310	53,151	398	1.2	15,175	0.3	15,175	0.3	284	0.87	0.44	0.00
5	0	145,534	79,920	32,290	0	112,210	33,324	249	0.8	0	0.0	0	0.0	249	0.77	0.39	0.00
6	0	145,191	79,920	32,290	0	112,210	32,981	247	0.8	0	0.0	0	0.0	247	0.76	0.38	0.00
7	0	135,060	79,920	32,280	0	112,200	22,860	171	0.5	0	0.0	0	0.0	171	0.52	0.26	0.00
8	0	154,712	80,020	32,360	0	112,380	42,332	317	1.0	23,482	0.5	23,482	0.5	141	0.43	0.22	0.00
9	0	170,385	80,160	32,450	0	112,610	57,775	432	1.3	0	0.0	0	0.0	432	1.33	0.67	0.00
10	0	126,876	80,270	32,460	0	112,730	14,146	106	0.3	0	0.0	0	0.0	106	0.32	0.16	0.00
11	0	98,303	80,810	32,620	(15,127)	98,303	0	0	0.0	0	0.0	0	0.0	0	0.00	0.00	(0.18)
12	0	104,730	76,150	31,080	(2,500)	104,730	0	0	0.0	0	0.0	0	0.0	0	0.00	0.00	(0.03)
13	0	113,817	80,940	33,220	(17,810)	96,350	17,467	131	0.4	17,467	0.4	17,467	0.4	0	0.00	0.00	(0.21)
14	0	104,425	80,990	33,200	(9,765)	104,425	0	0	0.0	0	0.0	0	0.0	0	0.00	0.00	(0.11)
15	0	104,984	81,050	33,210	(20,977)	93,283	11,701	88	0.3	11,701	0.3	11,701	0.3	0	0.00	0.00	(0.24)
16	0	101,402	81,060	33,200	(26,318)	87,942	13,460	101	0.3	13,460	0.3	13,460	0.3	0	0.00	0.00	(0.30)
17	0	107,540	81,370	31,800	(5,630)	107,540	0	0	0.0	0	0.0	0	0.0	0	0.00	0.00	(0.07)
18	0	112,215	81,240	33,080	(20,584)	93,746	18,469	138	0.4	18,469	0.4	18,469	0.4	0	0.00	0.00	(0.24)
19	0	110,994	81,200	33,020	(3,226)	110,994	0	0	0.0	0	0.0	0	0.0	0	0.00	0.00	(0.04)
20	0	103,683	81,100	32,980	(10,418)	103,662	21	0	0.0	21	0.0	21	0.0	0	0.00	0.00	(0.12)
21	0	111,065	81,030	32,970	(2,935)	111,065	0	0	0.0	0	0.0	0	0.0	0	0.00	0.00	(0.03)
22	0	115,046	80,990	32,910	0	113,900	1,146	9	0.0	1,146	0.0	1,146	0.0	9	0.03	0.01	0.00
23	0	122,743	80,950	32,790	(6,968)	106,772	15,971	119	0.4	15,971	0.4	15,971	0.4	0	0.00	0.00	(0.08)
24	0	104,377	81,090	32,740	(21,504)	92,326	12,051	90	0.3	12,051	0.3	12,051	0.3	0	0.00	0.00	(0.25)
25	0	95,151	81,130	32,740	(16,719)	95,151	0	0	0.0	0	0.0	0	0.0	0	0.00	0.00	(0.22)
26	0	121,473	81,200	32,740	0	113,940	7,533	56	0.2	7,533	0.2	7,533	0.2	56	0.17	0.09	0.00
27	0	123,240	81,250	32,700	0	113,950	9,290	69	0.2	9,290	0.2	9,290	0.2	69	0.21	0.11	0.00
28	0	114,469	81,230	32,640	(15,326)	98,544	15,925	119	0.4	15,925	0.4	15,925	0.4	0	0.00	0.00	(0.18)
29	0	110,136	81,260	32,610	(18,310)	95,560	14,576	109	0.3	14,576	0.3	14,576	0.3	0	0.00	0.00	(0.21)
30	0	126,338	81,230	32,570	0	113,800	12,538	94	0.3	12,538	0.3	12,538	0.3	94	0.29	0.15	0.00
31	0	124,148	81,180	32,540	0	113,720	10,428	78	0.2	10,428	0.2	10,428	0.2	78	0.24	0.12	0.00
Total	0	3,754,644	2,488,910	1,010,830	(254,756)	3,254,984	499,660	3,738	11.5	194,008	4.5	194,008	4.5	2,286	7.02	0.12	0.00

CALIFORNIA-AMERICAN WATER COMPANY  
 Monterey Division 443  
 Upper CV Wells Daily Production Report  
 January 2001

Date	Russell #2	Russell #4	Robles	Panetta #1	Panetta #2	Garzas #3	Garzas #4	LL #5	LL #6	TOTAL CF	TOTAL 1000 G	TOTAL AF
1	41,431	32,340	0	0	0	0	0	0	0	73,771	552	1.69
2	80,170	32,380	0	8,460	10,340	0	12,005	0	0	143,356	1,072	3.29
3	80,000	32,310	0	13,460	16,570	0	15,333	0	0	157,693	1,160	3.62
4	80,010	32,300	0	0	0	0	0	0	0	112,310	840	2.58
5	79,920	32,290	0	0	0	0	50	0	0	112,260	840	2.58
6	79,920	32,290	0	0	0	0	0	0	0	112,210	839	2.58
7	79,920	32,280	0	0	0	0	0	0	0	112,200	839	2.58
8	80,020	32,360	0	0	0	0	0	0	30	112,410	841	2.58
9	80,160	32,450	0	0	0	0	0	0	0	112,610	842	2.59
10	80,270	32,460	0	0	0	0	0	0	0	112,730	843	2.59
11	80,810	17,493	0	0	0	0	0	0	0	98,303	735	2.26
12	73,650	31,080	0	0	0	0	0	0	0	104,730	783	2.40
13	63,130	33,220	0	0	0	0	0	0	0	96,350	721	2.21
14	71,225	33,200	0	0	0	0	0	0	0	104,425	781	2.40
15	60,073	33,210	0	0	0	0	0	0	0	93,283	698	2.14
16	54,742	33,200	0	0	0	0	0	0	0	87,942	658	2.02
17	75,740	31,800	0	0	0	0	0	0	0	107,540	804	2.47
18	60,656	33,090	0	0	0	0	0	0	0	93,746	701	2.15
19	77,974	33,020	0	0	0	0	0	0	0	110,994	830	2.55
20	70,682	32,980	0	0	0	0	0	0	0	103,662	775	2.38
21	78,095	32,970	0	0	0	0	0	0	0	111,065	831	2.55
22	80,990	32,910	0	0	0	0	0	0	0	113,900	852	2.61
23	73,962	32,790	0	0	0	0	0	0	0	106,772	799	2.45
24	59,586	32,740	0	0	0	0	0	10	10	92,346	691	2.12
25	62,411	32,740	0	0	0	0	0	0	0	95,151	712	2.18
26	81,200	32,740	0	0	0	0	0	0	0	113,940	852	2.62
27	81,250	32,700	0	0	0	0	0	0	0	113,950	852	2.62
28	65,904	32,640	0	0	0	0	0	0	0	98,544	737	2.26
29	62,950	32,610	0	0	0	0	0	0	0	95,560	715	2.19
30	81,230	32,570	0	0	0	0	0	0	0	113,800	851	2.61
31	81,180	32,540	0	0	0	0	0	0	0	113,720	851	2.61
CF	2,259,281	985,703	0	21,940	26,910	0	27,389	10	40	3,331,273	24,920	76.48
1000 G	16,901	7,448	0	164	201	0	205	0	0	24,920		
AF	51.9	22.9	0.0	0.5	0.6	0.0	0.6	0.0	0.0	76.5		



CALIFORNIA-AMERICAN WATER COMPANY  
 Monterey Division 443  
 Lower CV Wells Daily Production Report  
 January 2001

Date	Berwick #7	Berwick #8	Begonia	Manor	Schulte	Pearce	Cypress	San Carlos	R. Canada	BIRP • Backwash	L. CV Wells thru BIRP	Scarlett #8	TOTAL CF	TOTAL 1000 G	TOTAL AF
1	0	0	0	0	28,800	178,500	299,600	189,200	289,900	4,133	991,867	0	981,867	7,420	22.77
2	0	0	0	0	4,900	28,300	200,500	144,700	221,600	0	620,000	18,851	638,851	4,779	14.67
3	0	0	107,300	54,000	127,500	225,500	204,300	135,000	212,300	(40,277)	1,106,177	0	1,106,177	8,275	25.39
4	0	0	4,400	72,900	215,700	345,600	295,800	184,100	241,100	1,373	1,358,227	0	1,358,227	10,160	31.18
5	0	0	178,300	105,000	239,700	335,200	288,700	180,300	227,500	(13,019)	1,567,719	0	1,567,719	11,727	35.99
6	0	0	112,000	90,000	209,000	340,800	293,100	182,200	234,200	4,484	1,456,816	0	1,456,816	10,898	33.44
7	0	0	0	14,700	40,300	276,300	319,600	193,700	274,100	(2,890)	1,121,590	0	1,121,590	8,390	25.75
8	0	0	0	12,400	19,800	300,200	317,900	193,300	272,600	(16,223)	1,132,423	0	1,132,423	8,471	26.00
9	0	0	0	11,400	42,600	250,000	319,100	193,600	273,000	(768)	1,090,468	0	1,090,468	8,157	25.03
10	0	0	0	0	92,800	251,700	288,700	191,700	267,000	1,082	1,090,818	0	1,090,818	8,160	25.04
11	0	0	0	11,900	41,500	300,400	317,200	190,100	271,300	5,760	1,126,640	0	1,126,640	8,428	25.86
12	0	0	0	15,900	55,600	296,200	315,600	190,000	269,600	(2,372)	1,145,272	0	1,145,272	8,567	26.29
13	0	0	0	72,300	164,200	304,300	304,300	185,000	253,300	(8,157)	1,329,457	0	1,329,457	9,945	30.52
14	0	0	76,100	26,000	85,500	313,700	268,700	172,800	268,800	2,179	1,133,321	0	1,133,321	8,478	26.02
15	0	0	0	0	69,000	270,800	299,000	191,600	274,500	3,032	1,101,868	0	1,101,868	8,243	25.30
16	0	6,500	19,500	13,100	109,300	297,600	253,500	151,900	265,700	11,576	1,105,524	0	1,105,524	8,270	25.38
17	0	25,800	52,600	50,700	138,500	257,700	218,400	134,700	264,100	55	1,142,445	0	1,142,445	8,546	26.23
18	0	0	40,700	27,900	30,800	310,300	310,200	188,900	265,000	(813)	1,174,613	0	1,174,613	8,787	26.97
19	0	0	113,500	72,700	112,700	299,800	285,100	184,500	252,800	915	1,321,185	0	1,321,185	9,883	30.33
20	0	0	132,600	57,900	146,300	319,600	294,800	182,000	244,100	1,729	1,375,571	0	1,375,571	10,290	31.58
21	0	0	25,000	16,200	50,900	262,300	279,900	190,100	273,800	1,209	1,096,991	0	1,096,991	8,206	25.18
22	0	0	87,100	47,100	112,400	250,600	291,700	186,400	260,700	18,820	1,217,180	0	1,217,180	9,105	27.94
23	0	0	11,200	6,200	82,900	242,600	299,100	183,500	264,400	7,982	1,081,918	0	1,081,918	8,093	24.84
24	0	0	124,000	72,000	167,000	269,600	280,000	182,400	249,000	12,745	1,331,255	0	1,331,255	9,958	30.56
25	0	0	3,200	12,800	35,200	326,600	299,800	185,100	256,600	(21,573)	1,146,873	0	1,146,873	8,579	26.33
26	0	0	62,300	54,400	138,700	308,100	276,900	180,900	244,600	40,044	1,225,856	0	1,225,856	9,170	28.14
27	0	0	17,900	23,300	64,400	343,300	300,300	185,700	258,100	(56,830)	1,249,830	0	1,249,830	9,349	28.69
28	0	0	21,300	15,200	52,500	303,600	306,300	188,300	265,700	(20,589)	1,173,489	0	1,173,489	8,778	26.94
29	0	0	87,900	42,500	117,400	292,200	268,600	184,500	256,900	5,169	1,244,831	0	1,244,831	9,312	28.58
30	0	0	90,400	38,800	103,100	225,900	277,400	187,000	265,800	5,448	1,182,952	0	1,182,952	8,849	27.16
31	0	0	8,700	20,400	103,500	238,800	308,900	187,500	265,500	(146)	1,133,446	0	1,133,446	8,479	26.02
CF	0	32,300	1,376,000	1,057,700	3,002,500	8,527,900	8,904,000	5,610,700	8,003,600	(61,920)	36,576,620	18,851	36,595,471	273,753	840.12
1000 G	0	242	10,293	7,912	22,460	63,793	66,607	41,971	59,871	(463)	273,612	141	273,753		
AF	0.0	0.7	31.6	24.3	68.9	195.8	204.4	128.8	183.7	(1.4)	839.7	0.4	840.1		

\* Backwash is deducted from Lower CV Wells

CALIFORNIA-AMERICAN WATER COMPANY  
 Monterey Division 443  
 CVFP Daily Production Report  
 December 2000

Date	Gravity CF	Low Flow CF	Russell #2 CF	Russell #4 CF	To Carmel River	Wells 2 & 4	Diversion (Less Russell)		Backwash		NET DIVERSION TO SYSTEM			To the River CFS	
							CF	1000 Gal.	CF	AF	CF	AF	CF	1000 Gal.	AF
1	0	99,189	80,880	32,700	(37,955)	75,625	23,564	176	0.5	23,564	0.5	0	0.00	0.00	(0.44)
2	0	98,492	80,870	32,680	(28,437)	85,113	13,379	100	0.3	13,379	0.3	0	0.00	0.00	(0.33)
3	0	100,194	80,790	32,680	(14,314)	99,156	1,038	8	0.0	1,038	0.0	0	0.00	0.00	(0.17)
4	0	108,826	80,730	32,640	(4,544)	108,826	0	0	0.0	0	0.0	0	0.00	0.00	(0.05)
5	0	95,998	80,680	32,610	(17,882)	95,408	590	4	0.0	590	0.0	0	0.00	0.00	(0.21)
6	0	82,757	80,600	32,600	(45,829)	67,371	15,386	115	0.4	15,386	0.4	0	0.00	0.00	(0.53)
7	0	81,073	80,590	32,580	(40,434)	72,735	8,337	62	0.2	8,337	0.2	0	0.00	0.00	(0.47)
8	0	95,752	80,730	32,560	(17,536)	95,752	0	0	0.0	0	0.0	0	0.00	0.00	(0.20)
9	0	96,638	80,670	32,540	(16,572)	96,638	0	0	0.0	0	0.0	0	0.00	0.00	(0.19)
10	0	83,823	80,670	32,560	(29,407)	83,823	0	0	0.0	0	0.0	0	0.00	0.00	(0.34)
11	0	91,390	80,770	32,620	(37,014)	76,376	15,004	112	0.3	15,004	0.3	0	0.00	0.00	(0.43)
12	0	78,643	80,770	32,630	(43,899)	69,501	9,142	68	0.2	9,142	0.2	0	0.00	0.00	(0.51)
13	0	96,647	80,750	32,610	(16,713)	96,647	0	0	0.0	0	0.0	0	0.00	0.00	(0.19)
14	0	89,242	80,710	32,570	(24,038)	89,242	0	0	0.0	0	0.0	0	0.00	0.00	(0.28)
15	0	83,685	80,720	32,550	(29,585)	83,685	0	0	0.0	0	0.0	0	0.00	0.00	(0.34)
16	0	88,818	80,800	32,520	(44,152)	69,168	19,650	147	0.5	19,650	0.5	0	0.00	0.00	(0.51)
17	0	98,451	80,760	32,450	(25,401)	87,809	10,642	80	0.2	10,642	0.2	0	0.00	0.00	(0.29)
18	0	87,413	80,790	32,510	(28,390)	84,910	2,503	19	0.1	2,503	0.1	0	0.00	0.00	(0.33)
19	0	87,259	80,840	32,530	(26,111)	87,259	0	0	0.0	0	0.0	0	0.00	0.00	(0.30)
20	0	67,146	80,840	32,530	(46,224)	56,146	18,293	137	0.4	18,293	0.4	0	0.00	0.00	(0.54)
21	0	75,010	80,850	32,520	(56,653)	57,146	9,494	71	0.2	9,494	0.2	0	0.00	0.00	(0.66)
22	0	69,997	80,660	32,490	(52,647)	60,503	692	5	0.0	692	0.0	0	0.00	0.00	(0.61)
23	0	78,650	80,680	32,540	(35,262)	77,958	0	0	0.0	0	0.0	0	0.00	0.00	(0.41)
24	0	82,034	80,720	32,510	(31,196)	82,034	0	0	0.0	0	0.0	0	0.00	0.00	(0.36)
25	0	69,494	80,710	32,520	(43,736)	69,494	0	0	0.0	0	0.0	0	0.00	0.00	(0.51)
26	0	79,947	80,730	32,500	(52,055)	61,175	18,772	140	0.4	18,772	0.4	0	0.00	0.00	(0.60)
27	0	75,720	80,490	32,470	(49,355)	63,605	12,115	91	0.3	12,115	0.3	0	0.00	0.00	(0.57)
28	0	83,232	80,280	32,400	(29,448)	83,232	0	0	0.0	0	0.0	0	0.00	0.00	(0.34)
29	0	85,745	80,120	32,110	(26,485)	85,745	0	0	0.0	0	0.0	0	0.00	0.00	(0.31)
30	0	83,476	80,080	32,010	(28,614)	83,476	0	0	0.0	0	0.0	0	0.00	0.00	(0.33)
31	0	80,706	80,110	32,210	(53,704)	58,616	22,090	165	0.5	22,090	0.5	0	0.00	0.00	(0.62)
Total	0	2,675,437	2,500,390	1,007,950	(1,033,594)	2,474,746	200,691	1,501	4.6	200,691	4.6	0	0.00	0.00	

CALIFORNIA-AMERICAN WATER COMPANY  
 Monterey Division 443  
 Upper CV Wells Daily Production Report  
 December 2000

Date	Russell #2	Russell #4	Robles	Panetta #1	Panetta #2	Garzas #3	Garzas #4	LL #5	LL #6	TOTAL -CF	TOTAL 1000 G	TOTAL AF
1	42,925	32,700	0	0	0	0	0	0	0	75,625	566	1.74
2	52,433	32,680	0	0	0	0	0	0	0	85,113	637	1.95
3	66,476	32,680	0	0	0	0	0	0	0	99,156	742	2.28
4	76,186	32,640	0	0	0	0	0	0	0	108,826	814	2.50
5	62,798	32,610	0	0	0	0	0	0	0	95,408	714	2.19
6	34,771	32,600	0	0	0	0	0	10	0	67,381	504	1.55
7	40,156	32,580	0	0	0	0	0	0	0	72,736	544	1.67
8	53,192	32,560	0	0	0	0	0	0	0	95,752	716	2.20
9	64,098	32,540	0	0	0	0	0	0	0	96,638	723	2.22
10	51,263	32,560	0	0	0	0	0	0	0	83,823	627	1.92
11	43,756	32,620	0	0	0	0	0	0	0	76,376	571	1.75
12	36,871	32,630	0	0	0	0	0	0	0	69,501	520	1.60
13	64,037	32,610	0	0	0	0	0	0	0	96,647	723	2.22
14	56,672	32,570	0	0	0	0	0	0	0	89,242	668	2.05
15	51,135	32,550	0	0	0	0	0	0	0	83,685	626	1.82
16	36,648	32,520	0	0	0	0	0	0	0	69,168	517	1.59
17	55,359	32,450	0	0	0	0	10	10	0	87,829	657	2.02
18	52,400	32,510	0	0	0	0	0	0	0	84,910	635	1.95
19	54,729	32,530	0	0	0	0	0	0	0	87,259	653	2.00
20	34,616	32,530	0	0	0	0	0	0	0	67,146	502	1.54
21	24,197	32,520	0	0	0	0	0	0	0	56,717	424	1.30
22	28,013	32,490	0	0	0	0	0	0	0	60,503	453	1.39
23	45,418	32,540	0	0	0	0	0	0	0	77,958	583	1.79
24	49,524	32,510	0	0	0	0	0	0	0	82,034	614	1.88
25	36,974	32,520	0	0	0	0	0	0	0	69,494	520	1.60
26	28,675	32,500	0	0	0	0	0	0	0	61,175	458	1.40
27	31,135	32,470	0	0	0	0	0	0	0	63,605	476	1.46
28	50,832	32,400	0	0	0	0	0	0	0	83,232	623	1.91
29	53,635	32,110	0	0	0	0	0	0	0	85,745	641	1.97
30	51,466	32,010	0	0	0	0	0	0	0	83,476	624	1.92
31	26,406	32,210	0	0	0	0	0	0	0	58,616	438	1.35
CF	1,466,796	1,007,950	0	0	0	0	10	20	0	2,474,776	16,513	56.81
1000 G	10,972	7,540	0	0	0	0	0	0	0	18,513		
AF	33.7	23.1	0.0	0.0	0.0	0.0	0.0	0.0	0.0	56.8		

CALIFORNIA-AMERICAN WATER COMPANY  
 Monterey Division 443  
 Lower CV Wells Daily Production Report  
 December 2000

Date	Berwick #7	Berwick #8	Begonia	Manor	Schulte	Pearce	Cypress	San Carlos	R. Canada	BIRP * Backwash	L. CV Wells thru BIRP	Scarlett #8	TOTAL CF	TOTAL 1000 G	TOTAL AF
1	0	0	0	0	0	54,300	173,300	190,300	260,260	1,790	676,370	0	676,370	5,060	15.53
2	0	0	0	0	0	43,600	240,700	171,300	260,260	(2,740)	718,500	0	718,500	5,376	16.50
3	0	0	0	0	0	178,800	202,600	159,700	260,260	(1,430)	914,890	0	914,890	6,844	21.00
4	0	0	38,300	22,100	0	123,700	189,800	180,800	311,850	(26,460)	832,610	0	832,610	6,228	19.11
5	0	0	0	0	0	99,400	134,000	179,200	302,995	(1,160)	716,755	0	716,755	5,362	16.45
6	0	0	0	0	0	105,500	166,800	206,500	290,400	3,940	765,260	0	765,260	5,725	17.57
7	0	0	0	0	0	85,000	141,500	206,400	315,700	1,000	747,600	0	747,600	5,592	17.16
8	0	0	0	0	0	87,100	139,800	182,800	316,800	21,910	704,590	0	704,590	5,271	16.18
9	0	0	0	0	0	54,000	67,900	191,700	329,700	3,220	640,080	0	640,080	4,788	14.69
10	0	0	0	0	0	54,000	96,700	179,500	327,300	12,050	645,450	0	645,450	4,828	14.82
11	0	0	0	0	0	105,300	261,700	202,300	299,400	(13,590)	882,290	0	882,290	6,600	20.25
12	0	0	0	0	0	27,400	140,200	170,500	326,500	6,380	658,220	0	658,220	4,924	15.11
13	0	0	0	0	0	51,200	105,800	180,500	324,700	3,290	658,910	0	658,910	4,929	15.13
14	0	0	0	0	0	47,800	219,000	205,500	311,400	(3,310)	787,010	0	787,010	5,887	18.07
15	0	0	0	0	0	36,700	44,300	176,300	339,700	3,190	586,810	0	586,810	4,390	13.47
16	0	0	0	0	0	65,800	117,400	181,500	321,000	7,650	678,050	0	678,050	5,072	15.57
17	0	0	0	0	0	93,300	186,500	203,700	307,000	4,410	786,090	0	786,090	5,880	18.05
18	0	0	0	0	0	38,800	194,800	173,300	317,000	12,160	711,740	0	711,740	5,324	16.34
19	0	0	0	0	0	119,700	247,600	184,300	299,300	(15,750)	866,650	0	866,650	6,483	19.90
20	0	0	0	0	0	125,500	274,100	185,100	293,600	1,260	877,040	0	877,040	6,561	20.13
21	0	0	0	0	0	144,400	247,600	199,800	293,600	9,589	875,811	0	875,811	6,552	20.11
22	0	0	0	0	0	133,800	248,100	199,900	295,100	3,285	873,615	0	873,615	6,535	20.06
23	0	0	0	0	0	118,800	238,900	200,500	297,900	6,700	849,400	0	849,400	6,354	19.50
24	0	0	0	0	0	117,600	148,500	149,200	256,700	12,030	662,470	0	662,470	4,956	15.21
25	0	0	300	500	0	117,600	148,500	149,200	256,700	12,030	662,470	0	662,470	4,956	15.21
26	0	0	32,600	15,500	0	169,100	116,600	201,100	188,000	4,640	765,860	0	765,860	5,729	17.58
27	0	0	11,900	13,000	0	221,100	186,100	133,300	213,900	(1,970)	820,370	0	820,370	6,137	18.83
28	0	0	16,100	20,600	0	380,800	178,100	140,600	163,300	(2,098)	1,090,598	0	1,090,598	8,158	25.04
29	0	0	51,700	30,200	0	260,700	262,800	190,100	260,600	(6,569)	1,179,769	0	1,179,769	8,825	27.08
30	0	0	52,300	28,400	0	274,800	275,600	191,700	265,300	(16,395)	1,202,895	0	1,202,895	8,998	27.61
31	0	0	31,300	16,100	0	193,300	254,800	164,300	299,100	9,575	901,925	0	901,925	6,747	20.71
CF	0	0	234,500	146,400	0	3,833,700	5,742,900	5,627,700	8,926,825	45,739	25,108,586	0	25,108,586	187,825	576.41
1000 G	0	0	1,754	1,095	0	28,678	42,960	42,098	66,777	342	187,825	0	187,825	576.4	
AF	0.0	0.0	5.4	3.4	0	88.0	131.8	129.2	204.9	1.1	576.4	0.0	576.4		

\* Backwash is deducted from Lower CV Wells

\*\* Estimated (12/1-1/26 meter out of service)

CALIFORNIA-AMERICAN WATER COMPANY  
 Monterey Division 443  
 CVFP Daily Production Report  
 November 2000

Date	Gravity CF	Low Flow CF	Russell #2		Russell #4		To Carmel River		Wells 2 & 4		Division (Less Russell) 1000 Gal.		Backwash		NET DIVERSION TO SYSTEM			To the River CFS			
			CF	CF	CF	CF	CF	CF	CF	CF	CF	AF	CF	CF	AF	CF	AF	CF	AF	CFS	CFS
1	0	103,828	81,820	32,810	(10,802)	103,828	0	0	0	0	0	0	0	0	0	0	0	0	0	0.00	(0.13)
2	0	99,129	81,670	32,660	(28,380)	85,950	13,179	99	0	0.3	13,179	0	0	0	0	0	0	0	0	0.00	(0.33)
3	0	97,785	81,660	32,780	(26,526)	87,912	9,873	74	0	0.2	9,873	0	0	0	0	0	0	0	0	0.00	(0.31)
4	0	105,729	81,610	32,820	(6,701)	105,729	0	0	0	0.0	0	0	0	0	0	0	0	0	0	0.00	(0.10)
5	0	102,577	81,550	32,840	(11,795)	102,577	0	0	0	0.0	0	0	0	0	0	0	0	0	0	0.00	(0.14)
6	0	101,220	81,660	32,850	(13,290)	101,220	0	0	0	0.0	0	0	0	0	0	0	0	0	0	0.00	(0.15)
7	0	88,202	81,640	32,710	(45,499)	88,202	19,351	145	0	0.4	19,351	0	0	0	0	0	0	0	0	0.00	(0.53)
8	0	95,558	81,540	32,700	(30,602)	83,638	11,920	89	0	0.3	11,920	0	0	0	0	0	0	0	0	0.00	(0.35)
9	0	98,046	81,510	32,710	(16,174)	98,046	0	0	0	0.0	0	0	0	0	0	0	0	0	0	0.00	(0.19)
10	0	86,642	81,470	32,750	(27,578)	86,642	0	0	0	0.0	0	0	0	0	0	0	0	0	0	0.00	(0.32)
11	0	98,439	81,500	32,740	(15,801)	98,439	0	0	0	0.0	0	0	0	0	0	0	0	0	0	0.00	(0.18)
12	0	106,726	81,490	32,740	(23,675)	90,545	16,181	121	0	0.4	16,181	0	0	0	0	0	0	0	0	0.00	(0.27)
13	0	82,803	81,520	32,720	(41,651)	72,589	10,214	76	0	0.2	10,214	0	0	0	0	0	0	0	0	0.00	(0.48)
14	0	87,542	81,480	32,730	(26,668)	87,542	0	0	0	0.0	0	0	0	0	0	0	0	0	0	0.00	(0.31)
15	0	83,440	81,430	32,680	(30,670)	83,440	0	0	0	0.0	0	0	0	0	0	0	0	0	0	0.00	(0.35)
16	0	81,390	81,390	32,680	(50,643)	63,427	17,963	134	0	0.4	17,963	0	0	0	0	0	0	0	0	0.00	(0.59)
17	0	60,053	81,270	32,700	(64,663)	49,307	10,746	80	0	0.2	10,746	0	0	0	0	0	0	0	0	0.00	(0.75)
18	0	98,410	81,240	32,670	(15,500)	98,410	0	0	0	0.0	0	0	0	0	0	0	0	0	0	0.00	(0.18)
19	0	102,500	81,120	32,690	(11,310)	102,500	0	0	0	0.0	0	0	0	0	0	0	0	0	0	0.00	(0.13)
20	0	106,950	81,110	32,650	(6,810)	106,950	0	0	0	0.0	0	0	0	0	0	0	0	0	0	0.00	(0.08)
21	0	105,049	81,070	32,620	(24,125)	89,565	15,484	116	0	0.4	15,484	0	0	0	0	0	0	0	0	0.00	(0.28)
22	0	104,981	80,980	32,600	(19,682)	93,698	11,083	83	0	0.3	11,083	0	0	0	0	0	0	0	0	0.00	(0.23)
23	0	103,796	80,940	32,630	(9,774)	103,796	0	0	0	0.0	0	0	0	0	0	0	0	0	0	0.00	(0.11)
24	0	106,227	80,900	32,610	(7,283)	106,227	0	0	0	0.0	0	0	0	0	0	0	0	0	0	0.00	(0.08)
25	0	97,211	80,860	32,600	(16,249)	87,211	0	0	0	0.0	0	0	0	0	0	0	0	0	0	0.00	(0.19)
26	0	101,021	80,870	32,650	(29,423)	84,097	16,924	127	0	0.4	16,924	0	0	0	0	0	0	0	0	0.00	(0.34)
27	0	105,483	80,860	32,620	(27,234)	86,246	19,237	144	0	0.4	19,237	0	0	0	0	0	0	0	0	0.00	(0.32)
28	0	96,982	80,780	32,590	(17,219)	96,151	831	6	0	0.0	831	0	0	0	0	0	0	0	0	0.00	(0.20)
29	0	106,448	80,790	32,640	(6,982)	106,448	0	0	0	0.0	0	0	0	0	0	0	0	0	0	0.00	(0.08)
30	0	109,426	80,810	32,650	(4,034)	109,426	0	0	0	0.0	0	0	0	0	0	0	0	0	0	0.00	(0.05)
31	0	0	0	0	0	0	0	0	0	0.0	0	0	0	0	0	0	0	0	0	0.00	0.00
Total	0	2,923,593	2,438,510	980,840	(688,743)	2,750,607	172,986	1,294	4.0	172,986	0	0	0	0	0	0	0	0	0	0.00	0.00

CALIFORNIA-AMERICAN WATER COMPANY  
 Monterey Division 443  
 Upper CV Wells Daily Production Report  
 November 2000

Date	Russell #2	Russell #4	Robles	Panetta #1	Panetta #2	Gaiztas #3	Gaiztas #4	LL #5	LL #6	TOTAL CF	TOTAL 1000 G	TOTAL AF
1	71,018	32,810	0	0	0	0	0	0	0	103,828	777	2.38
2	53,290	32,660	0	0	0	0	0	0	0	85,960	643	1.97
3	55,132	32,780	0	0	0	10	0	0	0	87,912	658	2.02
4	72,909	32,820	0	0	0	0	0	0	0	105,729	791	2.43
5	69,737	32,840	0	0	0	0	0	0	0	102,577	767	2.35
6	68,370	32,850	0	0	0	0	0	0	0	101,220	757	2.32
7	36,141	32,710	0	0	0	0	0	0	0	68,861	515	1.58
8	50,938	32,700	0	10	2,430	0	1,420	0	90	87,588	655	2.01
9	65,336	32,710	0	0	0	0	0	0	0	98,046	733	2.25
10	53,892	32,750	0	0	0	0	0	0	0	86,642	648	1.99
11	65,689	32,740	0	0	0	0	0	0	0	98,439	736	2.26
12	57,805	32,740	0	0	0	0	0	0	0	90,545	677	2.08
13	39,869	32,720	0	0	0	0	0	0	0	72,589	543	1.67
14	54,812	32,730	0	0	0	0	0	0	0	87,542	655	2.01
15	50,760	32,680	0	0	17,040	0	0	0	0	100,480	752	2.31
16	0	29,179	0	0	50,020	0	0	0	0	79,199	592	1.82
17	16,607	32,700	0	0	34,240	0	0	0	0	83,547	625	1.92
18	65,740	32,670	0	0	0	0	0	0	0	98,410	736	2.26
19	69,810	32,690	0	0	0	0	0	0	0	102,500	767	2.35
20	74,300	32,650	0	0	0	0	0	0	0	106,950	800	2.46
21	56,945	32,620	0	0	0	0	0	0	0	89,565	670	2.06
22	61,298	32,600	0	0	0	0	0	0	0	93,898	702	2.16
23	71,166	32,630	0	0	0	0	0	0	0	103,796	776	2.38
24	73,617	32,610	0	0	0	0	0	0	0	106,227	795	2.44
25	64,611	32,600	0	0	0	0	0	0	0	97,211	727	2.23
26	51,447	32,650	0	0	0	0	0	0	0	84,097	629	1.93
27	61,623	32,620	0	0	0	0	0	0	0	94,243	705	2.16
28	63,561	32,590	0	0	0	0	0	0	0	96,151	719	2.21
29	73,808	32,640	0	0	0	0	0	0	0	106,448	796	2.44
30	76,776	32,650	0	0	0	0	0	0	0	109,426	819	2.51
31			0	0	0	0	0	0	0	0	0	0.00
CF	1,747,017	977,339	0	10	103,730	10	1,420	0	90	2,829,616	21,167	64.96
1000 G	13,069	7,311	0	0	776	0	11	0	1	21,167		
AF	40.1	22.4	0.0	0.0	2.4	0.0	0.0	0.0	0.0	65.0		

CALIFORNIA-AMERICAN WATER COMPANY  
 Monterey Division 443  
 Lower CV Wells Daily Production Report  
 November 2000

Date	Berwick #7	Berwick #8	Begonia	Manor	Schiltle	Pearce	Cypress	San Carlos	R. Canada	BRP * Backwash	L. CV Wells thru BRP	Scallett #8	TOTAL CF	TOTAL 1000 G	TOTAL AF
1	0	5,500	0	4,700	16,000	13,200	98,700	198,700	249,543	(9,080)	595,423	0	595,423	4,454	13.67
2	0	1,000	3,600	0	9,400	22,500	79,300	213,200	280,472	(1,450)	610,922	0	610,922	4,570	14.02
3	0	0	0	0	34,000	46,800	193,600	187,000	312,620	(9,850)	617,470	0	617,470	4,619	14.18
4	0	0	0	0	11,600	52,700	193,600	187,000	284,515	(1,870)	731,285	0	731,285	5,470	16.79
5	0	0	0	0	53,100	191,500	296,700	192,200	284,515	(780)	1,018,795	0	1,018,795	7,621	23.39
6	0	0	0	0	50,800	171,000	271,300	193,700	206,167	400	901,567	0	901,567	6,744	20.70
7	0	0	0	0	205,400	301,000	287,600	172,500	206,745	18,160	1,304,685	0	1,304,685	9,760	29.95
8	0	0	0	0	165,100	245,500	300,400	179,200	243,320	1,960	1,207,960	0	1,207,960	9,036	27.73
9	0	0	0	0	167,900	229,200	268,200	182,800	214,139	7,800	1,139,339	0	1,139,339	8,523	26.16
10	0	0	0	0	123,600	230,900	286,800	184,600	284,515	(18,510)	1,167,425	0	1,167,425	8,733	26.80
11	0	0	0	0	57,400	249,600	238,000	190,800	284,515	4,120	1,016,195	0	1,016,195	7,602	23.33
12	0	0	0	0	145,000	236,400	250,900	156,200	284,515	2,840	1,182,775	0	1,182,775	8,848	27.15
13	0	0	0	0	118,700	286,100	259,600	182,800	284,515	(8,540)	1,213,955	0	1,213,955	9,081	27.87
14	0	0	0	0	53,600	220,400	219,100	170,900	284,515	1,560	968,655	0	968,655	7,246	22.24
15	0	0	0	0	0	56,000	193,200	185,600	284,515	(1,100)	720,415	0	720,415	5,389	16.54
16	0	0	0	0	0	87,100	177,200	169,000	284,515	570	540,045	0	540,045	4,040	12.40
17	0	0	0	0	62,400	172,700	177,200	172,700	285,862	(120)	698,282	0	698,282	5,224	16.03
18	0	0	0	0	121,400	213,500	219,500	203,100	285,862	3,320	820,542	0	820,542	6,138	18.84
19	0	0	0	0	108,300	250,700	250,700	178,100	285,862	890	822,072	0	822,072	6,150	18.87
20	0	0	0	0	124,700	230,100	230,100	202,100	284,515	(8,370)	849,785	0	849,785	6,357	19.51
21	0	0	0	0	102,900	225,600	225,600	186,400	284,515	24,130	775,285	0	775,285	5,800	17.80
22	0	0	0	0	68,300	226,800	226,800	205,100	284,515	(5,810)	790,425	100	790,425	5,913	18.15
23	0	0	0	0	67,700	195,900	195,900	172,200	284,515	(1,510)	721,825	0	721,825	5,400	16.57
24	0	0	0	0	71,800	200,500	200,500	190,200	284,515	3,420	743,595	0	743,595	5,562	17.07
25	0	0	0	0	189,700	222,900	222,900	196,200	284,515	2,700	949,915	0	949,915	7,106	21.81
26	0	0	0	0	152,500	213,800	213,800	180,800	284,515	(9,680)	873,495	0	873,495	6,534	20.05
27	0	0	0	0	154,500	223,800	223,800	200,500	284,515	6,650	856,665	0	856,665	6,408	19.67
28	0	0	0	0	91,500	229,600	229,600	179,300	284,515	14,510	770,405	0	770,405	5,763	17.69
29	0	0	0	0	73,500	100,300	100,300	176,400	284,515	(13,630)	648,345	0	648,345	4,850	14.88
30	0	0	0	0	0	62,200	62,200	187,000	284,515	2,380	531,335	0	531,335	3,975	12.20
31	0	0	0	0	0	0	0	0	0	0	0	0	0	0	0.00
CF	0	6,500	283,300	305,100	1,255,400	3,929,200	6,150,000	5,603,500	8,260,892	5,110	25,788,782	100	25,788,882	192,914	592.03
1000 G	0	49	2,119	2,282	9,391	29,392	46,005	41,917	61,796	38	192,913	1	192,914	592.0	
AF	0.0	0.1	6.5	7.0	28.8	90.2	141.2	128.6	189.6	0.1	592.0	0.0	592.0		

\* Backwash is deducted from Lower CV Wells

CALIFORNIA-AMERICAN WATER COMPANY  
 Monterey Division 443  
 CVFP Daily Production Report  
 October 2000

Date	Gravity		Low Flow		Russell #2		Russell #4		To Channel River		Wells 2 & 4		Diversion (Less Russell)		Backwash		NET DIVERSION TO SYSTEM		To the River	
	CF	CF	CF	CF	CF	CF	CF	CF	CF	AF	1000 Gal.	CF	AF	CF	AF	CF	AF	CF	AF	CFS
1	0	141,417	81,260	33,260	0	114,520	28,697	201	0.6	12,338	0.3	14,559	109	0.33	0.17	0.00				
2	0	128,410	81,310	33,220	0	114,530	13,880	104	0.3	46	0.0	13,834	103	0.32	0.16	0.00				
3	0	142,798	81,230	32,830	0	114,060	28,738	215	0.7	21,934	0.5	6,804	51	0.16	0.08	0.00				
4	0	115,645	81,330	32,950	(13,854)	100,428	15,219	114	0.3	15,219	0.3	0	0	0.00	0.00	(0.16)				
5	0	135,798	81,340	33,040	0	114,380	21,418	160	0.5	0	0.0	21,418	160	0.49	0.25	0.00				
6	0	137,402	81,350	33,030	0	114,360	23,022	172	0.5	0	0.0	23,022	172	0.53	0.27	0.00				
7	0	129,424	81,410	33,050	0	114,460	14,964	112	0.3	0	0.0	14,964	112	0.34	0.17	0.00				
8	0	143,276	81,370	33,110	0	114,480	28,796	215	0.7	15,678	0.4	13,118	98	0.30	0.15	0.00				
9	0	153,197	81,380	33,180	0	114,560	38,637	289	0.9	9,363	0.2	29,274	219	0.67	0.34	0.00				
10	0	146,496	81,450	33,230	0	114,680	31,816	238	0.7	0	0.0	31,816	238	0.73	0.37	0.00				
11	0	100,107	81,470	33,190	(14,553)	100,107	0	0	0.0	0	0.0	0	0	0.00	0.00	0.00				
12	0	74,590	81,390	33,220	(40,020)	74,590	0	0	0.0	0	0.0	0	0	0.00	0.00	(0.46)				
13	0	87,545	81,380	33,180	(46,189)	88,371	19,174	143	0.4	19,174	0.4	0	0	0.00	0.00	(0.53)				
14	0	100,536	81,440	33,160	(28,649)	85,941	14,595	109	0.3	14,595	0.3	0	0	0.00	0.00	(0.33)				
15	0	83,218	81,400	33,100	(31,322)	83,218	0	0	0.0	0	0.0	0	0	0.00	0.00	(0.36)				
16	0	95,737	81,400	33,110	(18,773)	95,737	0	0	0.0	0	0.0	0	0	0.00	0.00	(0.22)				
17	0	99,657	81,370	33,090	(14,803)	99,657	0	0	0.0	0	0.0	0	0	0.00	0.00	(0.17)				
18	0	94,082	81,360	33,050	(39,233)	75,177	18,905	141	0.4	18,905	0.4	0	0	0.00	0.00	(0.45)				
19	0	98,746	81,360	33,080	(29,369)	85,071	13,675	102	0.3	13,675	0.3	0	0	0.00	0.00	(0.34)				
20	0	88,219	81,300	33,040	(26,121)	88,219	0	0	0.0	0	0.0	0	0	0.00	0.00	(0.30)				
21	0	100,325	81,320	33,060	(14,055)	100,325	0	0	0.0	0	0.0	0	0	0.00	0.00	(0.16)				
22	0	91,638	81,350	33,050	(22,762)	91,638	0	0	0.0	0	0.0	0	0	0.00	0.00	(0.26)				
23	0	99,814	81,280	33,060	(35,141)	79,199	20,615	154	0.5	20,615	0.5	0	0	0.00	0.00	(0.41)				
24	0	81,482	81,650	31,570	(44,448)	88,772	12,710	95	0.3	12,710	0.3	0	0	0.00	0.00	(0.51)				
25	0	104,028	81,420	33,200	(10,592)	104,028	0	0	0.0	0	0.0	0	0	0.00	0.00	(0.12)				
26	0	102,520	81,410	33,260	(12,150)	102,520	0	0	0.0	0	0.0	0	0	0.00	0.00	(0.14)				
27	0	93,907	81,540	33,170	(20,803)	93,907	0	0	0.0	0	0.0	0	0	0.00	0.00	(0.24)				
28	0	99,348	81,630	33,250	(36,934)	77,946	21,402	160	0.5	21,402	0.5	0	0	0.00	0.00	(0.43)				
29	0	104,919	81,710	33,230	(22,135)	92,805	12,114	91	0.3	12,114	0.3	0	0	0.00	0.00	(0.26)				
30	0	98,520	81,900	32,920	(17,284)	97,536	984	7	0.0	984	0.0	0	0	0.00	0.00	(0.20)				
31	0	95,869	81,860	32,920	(18,911)	95,869	0	0	0.0	0	0.0	0	0	0.00	0.00	(0.22)				
Total	0	3,368,670	2,524,400	1,024,610	(558,101)	2,991,109	377,561	2,924	8.7	208,762	4.8	168,809	1,263	3.88	0.00	0.00				



CALIFORNIA-AMERICAN WATER COMPANY  
 Monterey Division 443  
 Upper CV Wells Daily Production Report  
 October 2000

Date	Russell #2	Russell #4	Robles	Panelta #1	Panelta #2	Garzas #3	Garzas #4	LL #5	LL #6	TOTAL CF	TOTAL 1000 G	TOTAL AF
1	81,260	33,260	0	0	0	0	15,940	0	0	130,460	976	2.99
2	81,310	33,220	0	0	0	0	15,940	0	0	130,470	976	3.00
3	81,230	32,830	0	0	10	0	15,940	0	0	130,010	973	2.98
4	67,476	32,950	0	5,530	20	0	11,830	0	0	117,806	881	2.70
5	81,340	33,040	0	0	0	0	15,990	0	0	130,370	975	2.99
6	81,350	33,030	0	0	170	0	15,970	0	0	130,520	976	3.00
7	81,410	33,050	0	0	0	0	15,940	0	0	130,400	975	2.99
8	81,370	33,110	0	0	0	0	15,990	0	0	130,470	976	3.00
9	81,380	33,180	0	0	0	0	15,950	0	0	130,510	976	3.00
10	81,450	33,230	0	9,330	0	0	4,620	0	0	128,630	962	2.95
11	66,917	33,190	0	13,590	0	0	0	0	0	113,697	851	2.61
12	41,370	33,220	0	13,610	0	0	0	0	0	88,200	660	2.02
13	35,191	33,180	0	13,570	0	0	0	0	0	81,941	613	1.88
14	52,781	33,160	0	9,470	0	0	0	0	0	95,411	714	2.19
15	50,118	33,100	0	7,550	0	0	0	0	0	90,768	679	2.08
16	62,627	33,110	0	820	0	0	0	0	0	96,557	722	2.22
17	66,567	33,090	0	9,920	0	0	0	0	0	109,577	820	2.52
18	42,127	33,050	0	16,730	0	0	0	0	0	91,907	685	2.11
19	51,991	33,080	0	16,730	0	0	0	0	0	101,801	762	2.34
20	55,179	33,040	0	16,710	0	0	0	0	0	104,929	785	2.41
21	67,265	33,060	0	16,740	0	0	0	0	0	117,065	876	2.69
22	58,588	33,050	0	16,820	0	0	0	0	0	108,458	811	2.49
23	46,139	33,060	0	16,680	0	0	0	0	0	95,879	717	2.20
24	37,202	31,570	0	0	0	0	0	0	0	85,862	642	1.97
25	70,828	33,200	0	10,200	0	0	17,110	0	0	119,928	897	2.75
26	69,260	33,260	0	0	0	0	15,900	0	0	122,170	914	2.80
27	60,737	33,170	0	0	0	0	9,450	0	0	93,907	702	2.16
28	44,696	33,250	0	0	0	0	0	0	0	77,946	583	1.79
29	59,575	33,230	0	0	0	0	0	0	0	92,805	694	2.13
30	64,616	32,920	0	0	0	0	0	0	0	97,536	730	2.24
31	62,949	32,920	0	0	0	0	0	0	0	95,869	717	2.20
CF	1,966,299	1,024,810	0	73,470	120,730	0	186,570	0	0	3,371,879	25,223	77.41
1000	14,709	7,666	0	550	903	0	1,396	0	0	26,223		
AF	45.1	23.5	0.0	1.7	2.8	0.0	4.3	0.0	0.0	77.4		

CALIFORNIA-AMERICAN WATER COMPANY  
 Monterey Division 443  
 Lower CV Wells Daily Production Report  
 October 2000

Date	Berwick #7	Berwick #8	Begonia	Manor	Schulle	Pearce	Cypress	San Carlos	R. Canada	BIRP * Backwash	L. CV Wells Inlet BIRP	Scantail #8	TOTAL CF	TOTAL 1000 G	TOTAL AF
1	0	0	0	0	62,500	142,100	355,400	176,700	284,515	(320)	1,021,535	0	1,021,535	7,842	23.45
2	0	0	0	21,500	106,700	285,800	341,600	161,800	284,515	16,840	1,185,075	0	1,185,075	8,865	27.21
3	0	0	100	200	80,100	299,100	318,900	175,900	284,515	(34,800)	1,193,615	200	1,193,815	8,930	27.41
4	0	0	19,703	67,300	151,000	270,200	115,800	173,900	284,515	3,950	1,078,468	0	1,078,468	8,068	24.76
5	0	0	24,351	61,400	169,500	92,800	363,440	174,700	284,515	(1,510)	1,172,216	0	1,172,216	8,769	26.91
6	0	4,190	7,970	30,700	146,600	172,339	363,440	172,100	284,515	620	1,181,234	0	1,181,234	8,836	27.12
7	0	0	0	15,900	62,100	231,556	330,125	172,000	284,515	(2,680)	1,098,886	0	1,098,886	8,220	25.23
8	0	0	40,954	49,200	0	318,741	186,263	172,000	284,515	(2,000)	1,053,673	0	1,053,673	7,882	24.19
9	0	0	0	36,200	0	244,212	363,440	170,000	284,515	1,660	1,097,407	0	1,097,407	8,209	25.19
10	0	9,355	0	12,900	0	55,155	255,165	141,200	229,153	(15,880)	740,071	0	740,071	5,536	16.99
11	0	1,345	1,328	0	0	78,904	197,923	175,300	284,515	(1,820)	741,135	0	741,135	5,544	17.01
12	0	0	0	0	16,400	74,998	191,109	170,300	279,536	(700)	733,043	0	733,043	5,484	16.83
13	0	0	0	0	0	84,685	308,621	171,100	284,515	990	847,931	0	847,931	6,343	19.47
14	0	0	0	0	0	32,812	166,880	172,300	284,515	840	655,667	0	655,667	4,905	15.05
15	0	0	0	0	13,800	138,590	316,193	171,200	284,515	2,140	718,109	0	718,109	5,372	16.49
16	0	0	0	0	54,300	104,372	293,326	171,200	284,515	18,730	943,968	0	943,968	7,061	21.67
17	0	4,000	886	0	20,400	105,153	320,281	172,600	284,515	(10,530)	889,229	0	889,229	6,652	20.41
18	0	994	0	0	0	102,601	296,052	175,000	284,515	8,350	875,193	0	875,193	6,547	20.09
19	0	0	0	0	14,800	124,684	306,955	177,900	284,515	(3,960)	899,031	0	899,031	6,725	20.64
20	0	0	0	0	0	115,153	303,624	181,300	284,515	(13,840)	885,811	0	885,811	6,626	20.34
21	0	0	0	5,100	23,900	156,558	308,350	183,100	284,515	(2,140)	886,732	0	886,732	6,633	20.36
22	0	0	0	0	51,400	177,652	338,151	184,100	284,515	(20)	959,543	0	959,543	7,178	22.03
23	0	0	0	25,900	157,800	252,806	363,440	178,900	284,515	(2,380)	1,018,788	0	1,018,788	7,621	23.39
24	0	0	0	0	30,100	357,490	363,440	182,000	284,515	(2,420)	1,265,741	0	1,265,741	9,468	29.06
25	0	0	0	0	0	97,185	353,027	191,900	284,515	620	1,219,965	0	1,219,965	9,126	28.01
26	0	0	0	0	0	73,436	298,324	197,800	284,515	(2,950)	926,007	0	926,007	6,927	21.26
27	0	0	775	13,800	38,700	73,123	246,533	183,700	284,515	1,730	910,300	0	910,300	6,810	20.90
28	0	0	0	0	14,100	107,028	209,281	202,700	284,515	(530)	799,885	0	799,885	5,984	18.36
29	0	0	0	8,100	49,000	89,339	251,306	199,600	284,515	(9,800)	861,154	0	861,154	6,442	19.77
30	0	0	0	0	30,600	33,283	144,231	183,100	284,515	13,860	631,269	0	631,269	5,470	19.86
31	0	0	0	0	0	0	0	0	0	0	0	0	0	4,722	14.49
CF	0	19,864	117,430	345,100	1,293,800	4,524,979	8,786,230	5,485,200	8,759,269	(20,750)	29,555,841	200	29,555,841	219,597	673.92
1000	0	149	878	2,604	9,678	33,849	65,726	41,032	65,524	(155)	219,595	1	219,597	673.9	
AF	0.0	0.5	2.7	8.0	29.7	103.9	201.7	125.9	201.1	(0.5)	673.9	0.0	673.9		

\*\* Estimated: Berwick, Begonia, Pearce, Cypress (inlet/out of service: 100,000/100,000)

\* Backwash is deducted from Lower CV Wells



**WATER SUPPLY STRATEGY AND BUDGET JULY - SEPTEMBER 2001**

Carmel River Reservoirs: Diversion and Release Schedule Assuming Approximately 85% of Normal Inflow Conditions  
(All Values in Acre-Feet, except as indicated)

	Jan-2001	Feb-2001	Mar-2001	Apr-2001	May-2001	Jun-2001	Jul-2001	Aug-2001	Sep-2001	Oct-2001	Nov-2001	Dec-2001	Totals WY 2001
<b>Los Padres Reservoir</b>													
Inflow	3,897	6,565	12,376	3,878	2,022	1,012	443	195	113	173	448	467	32,568
Outflow	13	24	27	37	52	41	42	33	23	13	7	5	323
Evaporation	2,680	5,870	11,570	3,246	925	0	0	0	0	0	0	0	24,290
Spillage	685	671	779	595	615	595	492	467	381	357	357	369	7,256
Release (Fish Ladder)	0	0	0	0	0	375	61	0	0	0	0	0	437
Release (Outlet)	0	0	0	0	430	0	0	0	0	0	0	0	430
Release (Notch)													
Total Storage	1,051	1,569	1,569	1,569	1,569	1,569	1,569	1,417	1,111	821	624	707	
Beginning of Month	1,051	1,569	1,569	1,569	1,569	1,569	1,569	1,417	1,111	821	624	707	
End of Month	1,051	1,569	1,569	1,569	1,569	1,569	1,569	1,417	1,111	821	624	707	
<b>Between Reservoirs</b>													
Inflow	1,480	2,530	6,181	1,321	781	319	140	61	36	54	141	148	13,543
Outflow	21	26	37	53	74	63	68	58	53	37	21	16	520
Evapotranspiration	2	2	2	5	7	8	8	8	6	5	2	2	39
Private Usage													
<b>San Clemente Reservoir</b>													
Inflow	4,823	9,043	18,491	5,104	2,670	1,219	617	463	358	369	475	498	45,398
Outflow	7	9	10	12	21	5	5	4	3	2	1	1	87
Evaporation	4,133	8,420	17,804	4,435	1,916	560	120	151	57	59	176	6	38,667
Spillage	7	4	0.4	3	58	0	0	0	0	0	0	0	76
Diversion (Filter Plant)	0	0	0	0	0	297	123	123	119	123	119	123	1,333
Release (Valve)	615	555	615	595	615	297	307	123	119	123	119	123	4,511
Release (Fish Ladder)	61	56	61	59	61	59	61	61	59	61	59	61	724
Leakage													
Total Storage	149	149	149	149	149	149	149	149	149	149	149	149	
Beginning of Month	149	149	149	149	149	149	149	149	149	149	149	149	
End of Month	149	149	149	149	149	149	149	149	149	149	149	149	
<b>Total Release</b>	4,810	9,030	18,480	5,090	2,592	1,214	612	456	355	367	474	497	45,235
Mean Daily Release in cfs	78	163	301	86	42	20	10.0	7.5	6.0	6.0	8.0	8	
Mean Daily Diversion in cfs	0.1	0.1	0.0	0.1	0.9	0.0	0.0	0.0	0.0	0.0	0.0	0.0	
Mean Daily Production @ Russell Wells (cfs)	1.2	1.1	0.7	1.24	1.38	1.25	1.25	1.25	1.25	1.25	1.25	1.25	
Mean Daily Production @ Russell Wells (AF)	75	63	42	74	85	74	77	77	74	77	74	77	

1. The minimum pool requirements at Los Padres and San Clemente Reservoirs are 91 acre-feet @ elevation 980 ft and 74 acre-feet @ elevation 515 ft, respectively.
2. Projected inflow for the May 2001 through December 2001 period is based on the expectation that unimpaired flows at San Clemente Dam will be approximately 85% of the median historical flows (1902-96) and similar to the daily recession during the May 1999 through December 1999 period.
3. Calculated inflow to San Clemente Reservoir is distributed 76% above Los Padres Dam and 24% between Los Padres and San Clemente Dams, based on reconstructed unimpaired inflow during Nov. 2000 to Feb. 2001 period.
4. Estimated evaporation is based on average monthly reservoir surface area and gross monthly evaporation rates developed by US Army Corps of Engineers (1981).
5. The diversion rate of 0.0 cfs at San Clemente Dam and pumping rate of 1.25 from Russell Wells are set to conform with current inflow conditions.