

CAW - HD 2/23/08
BCW

Adult Steelhead at San Clemente Dam

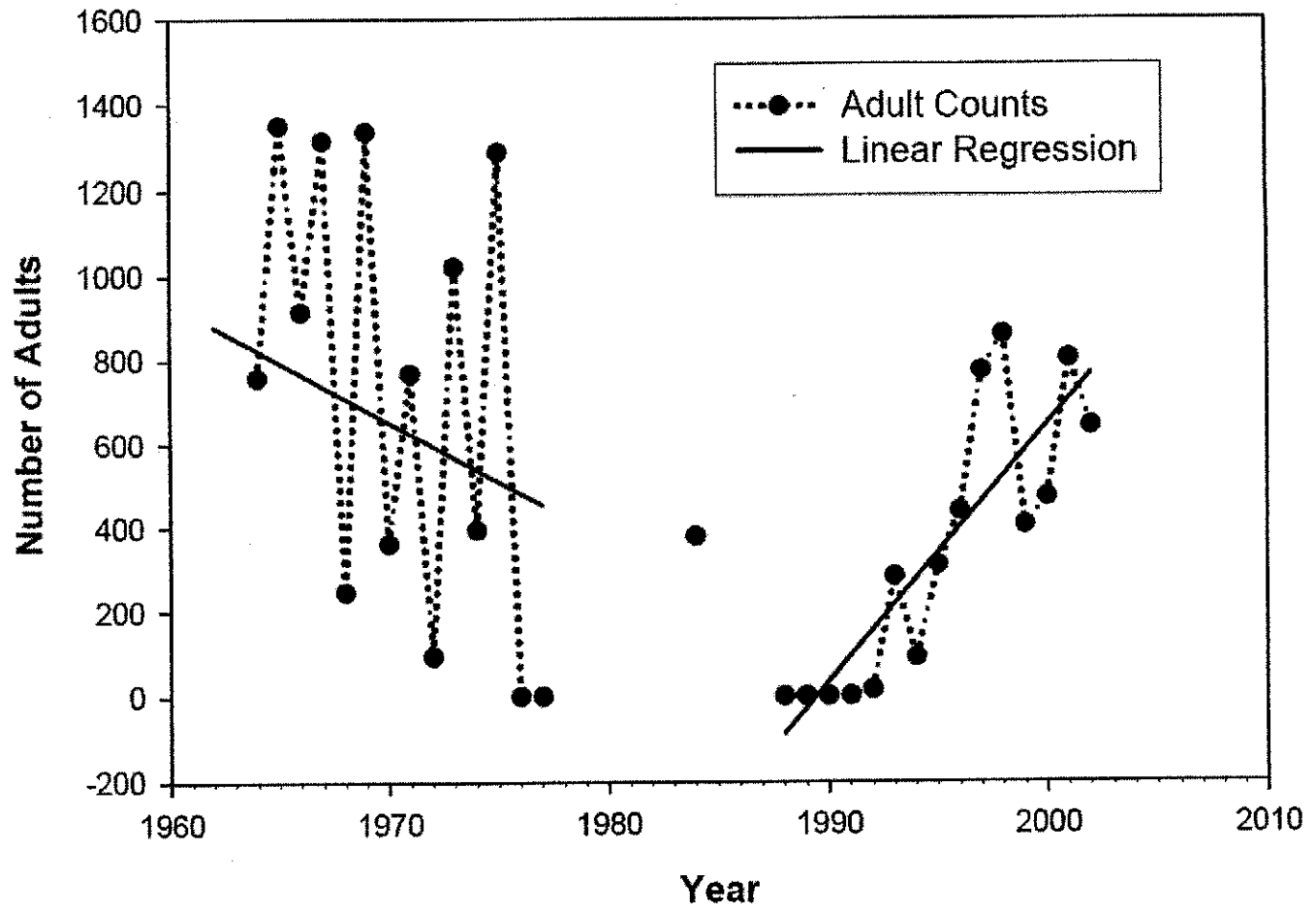


Figure B.2.8.1. Adult counts at San Clemente Dam, Carmel River. Data from the Monterey Peninsula Water Management District. See Snider (1983) for methods of counting fish before 1980; these early data are subject to substantial observation error (*N.B.* the regression line is not significantly different from flat). The increase during the 1990s followed a severe drought (and concurrent dewatering of the mainstem by a water district) in the late 1980s and early '90s.