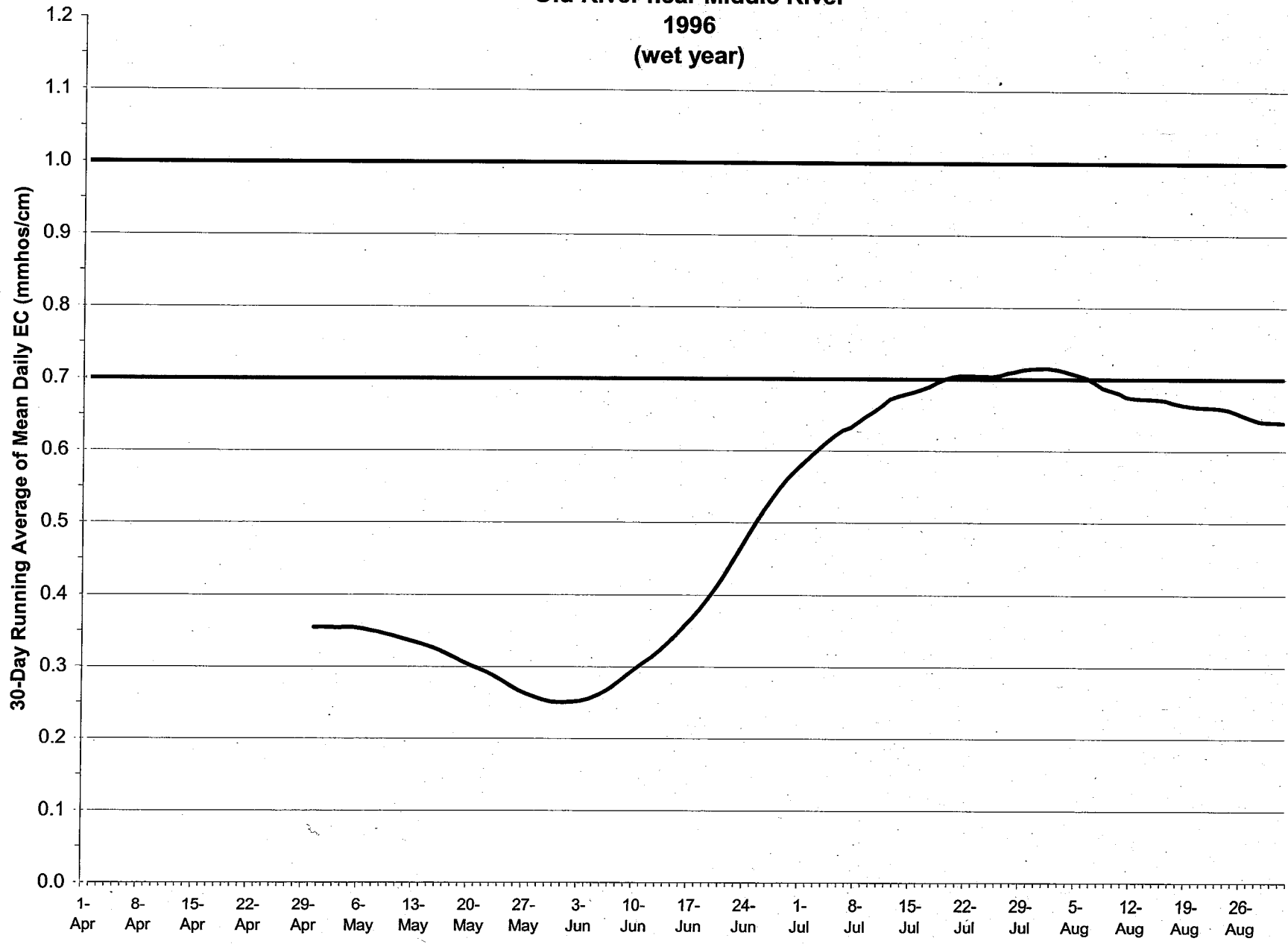
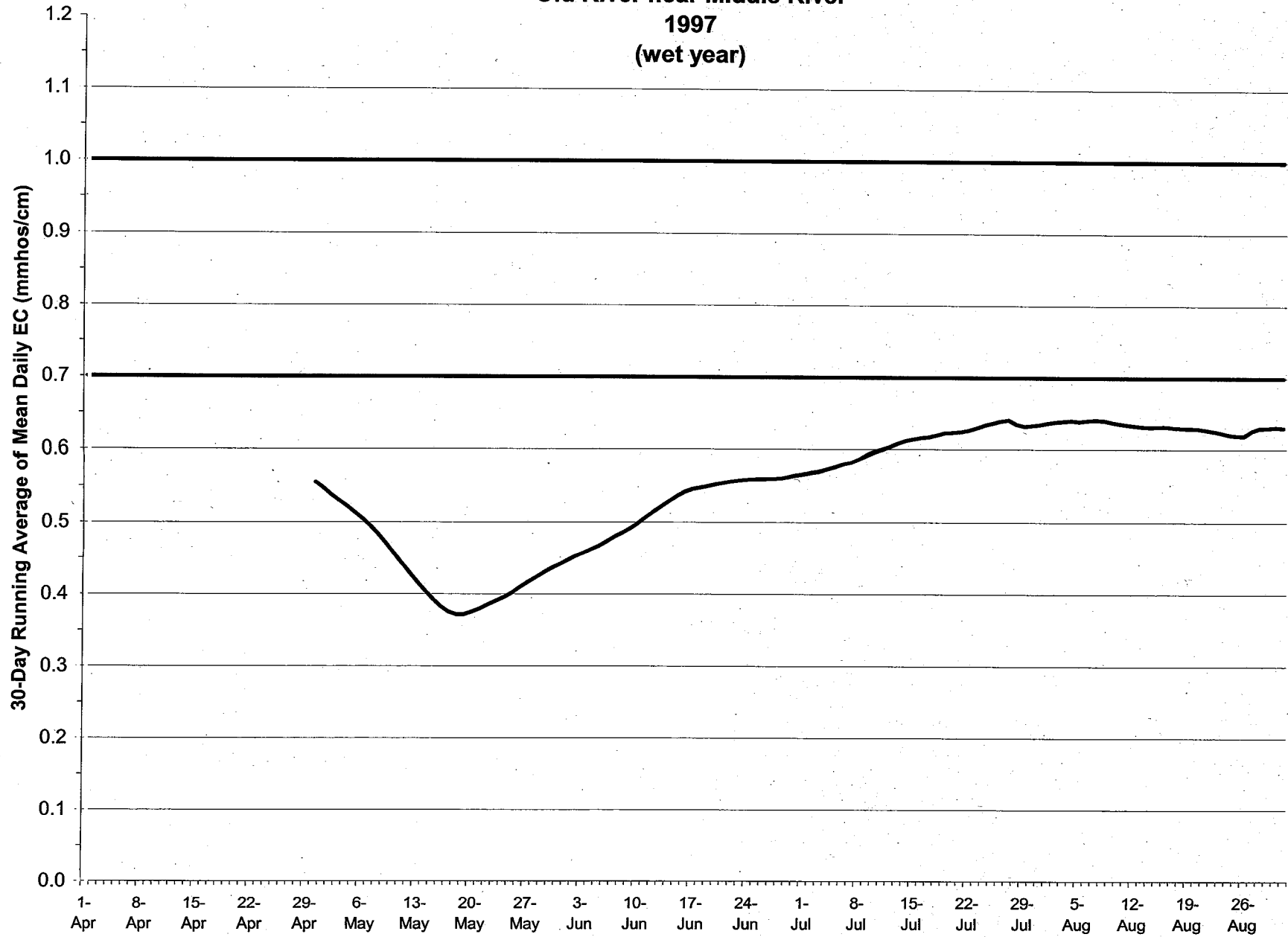


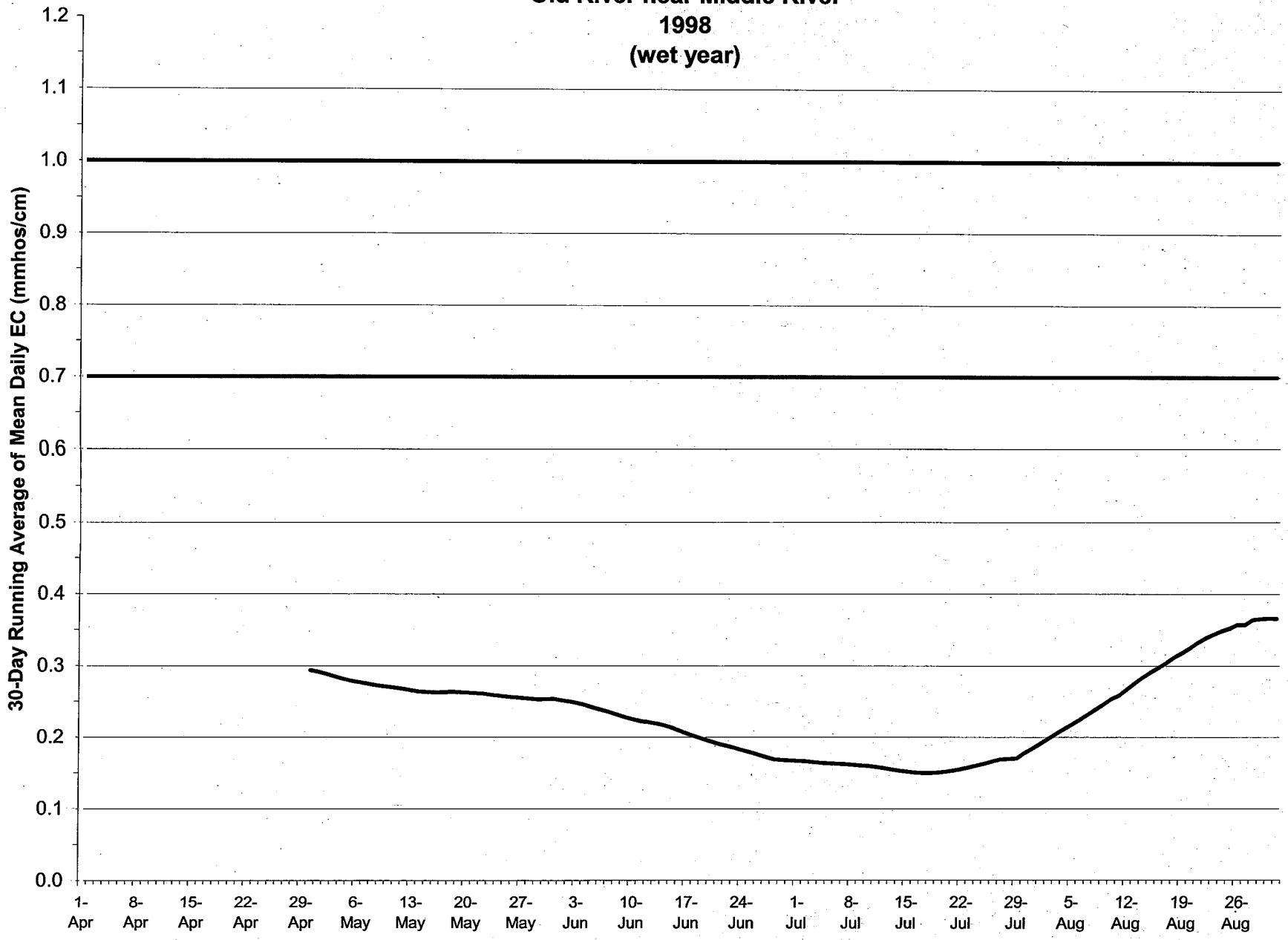
Station C-8
Old River near Middle River
1996
(wet year)



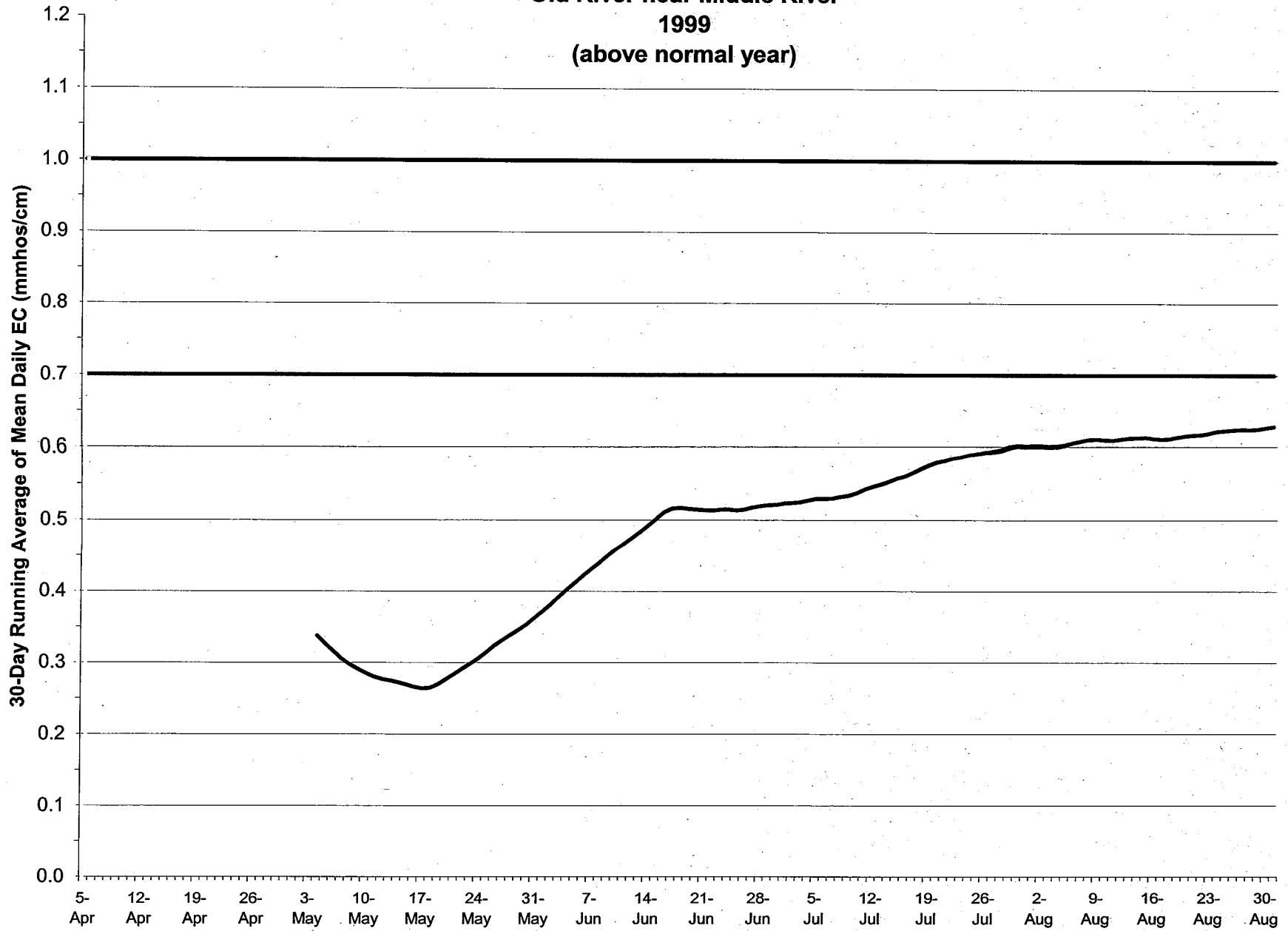
**Station C-8
Old River near Middle River
1997
(wet year)**



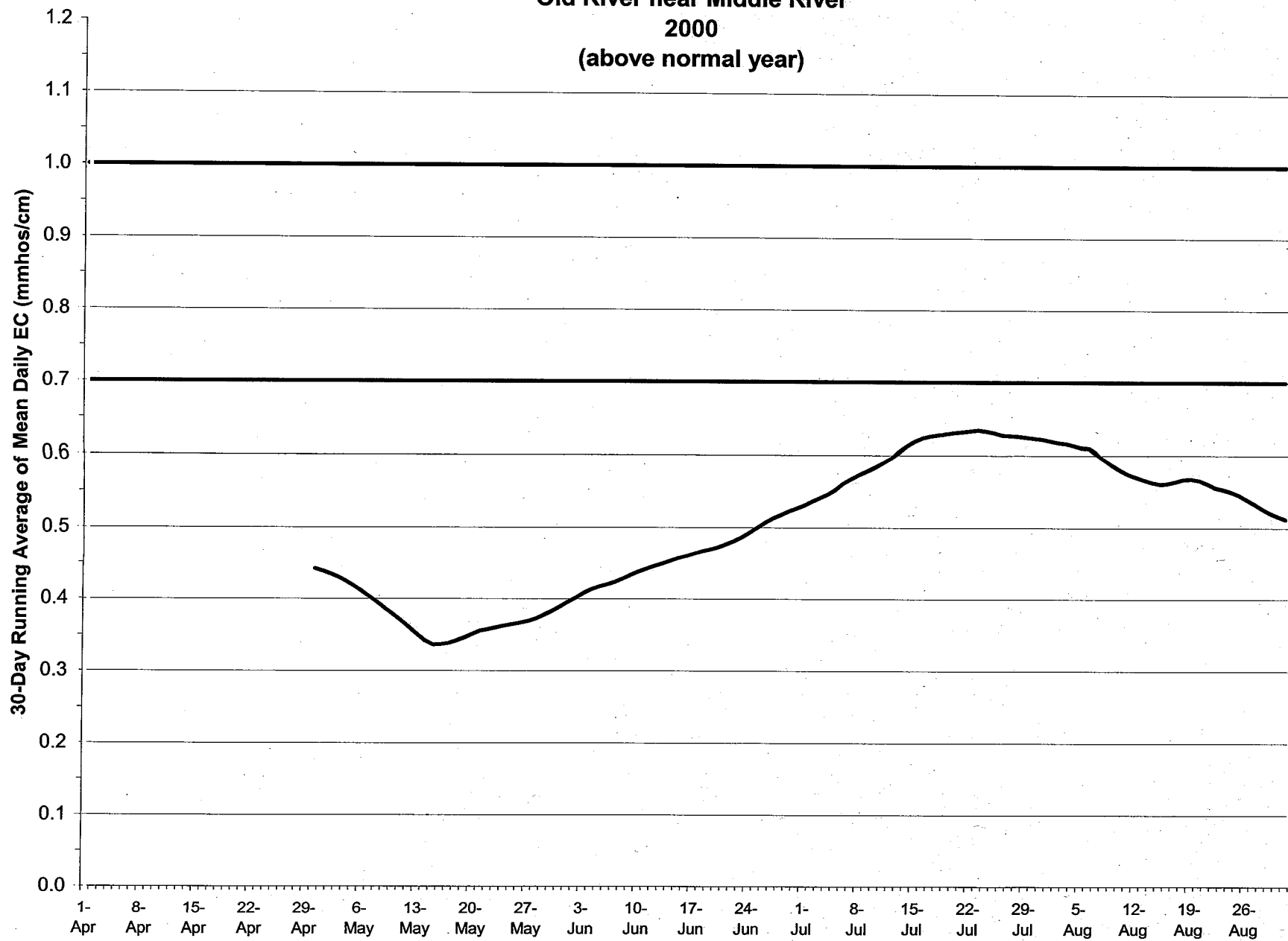
Station C-8
Old River near Middle River
1998
(wet year)



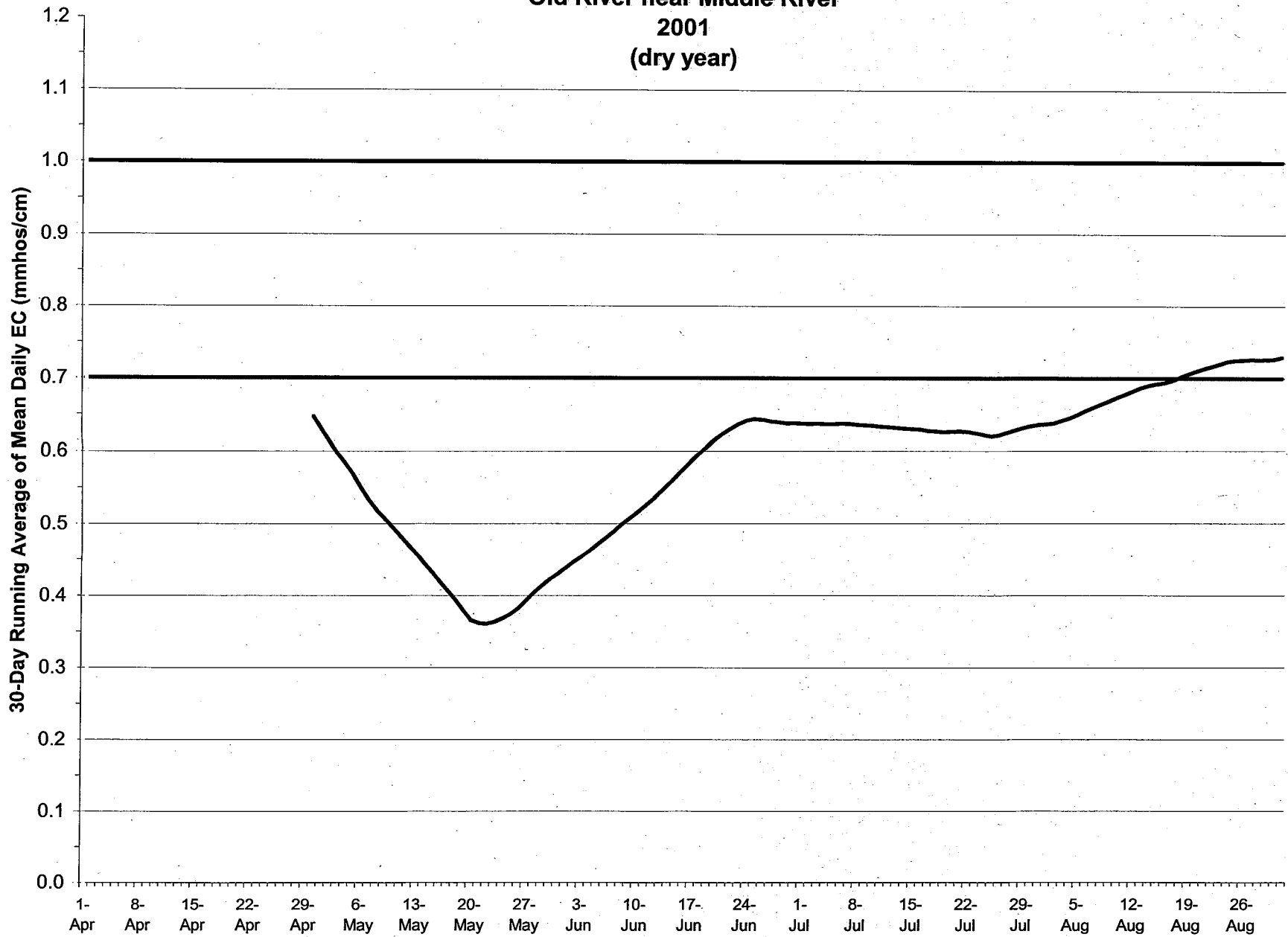
Station C-8
Old River near Middle River
1999
(above normal year)



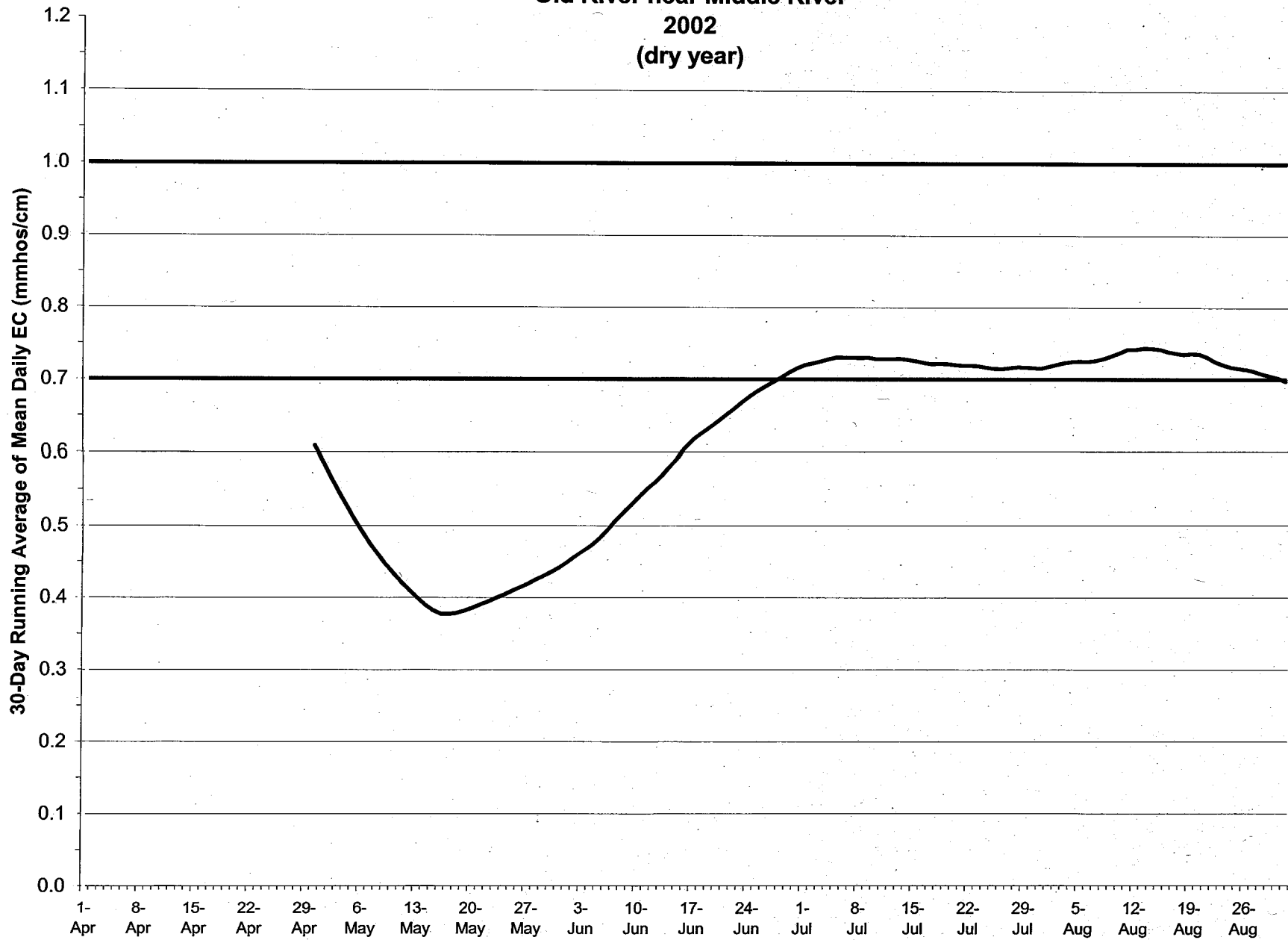
Station C-8
Old River near Middle River
2000
(above normal year)



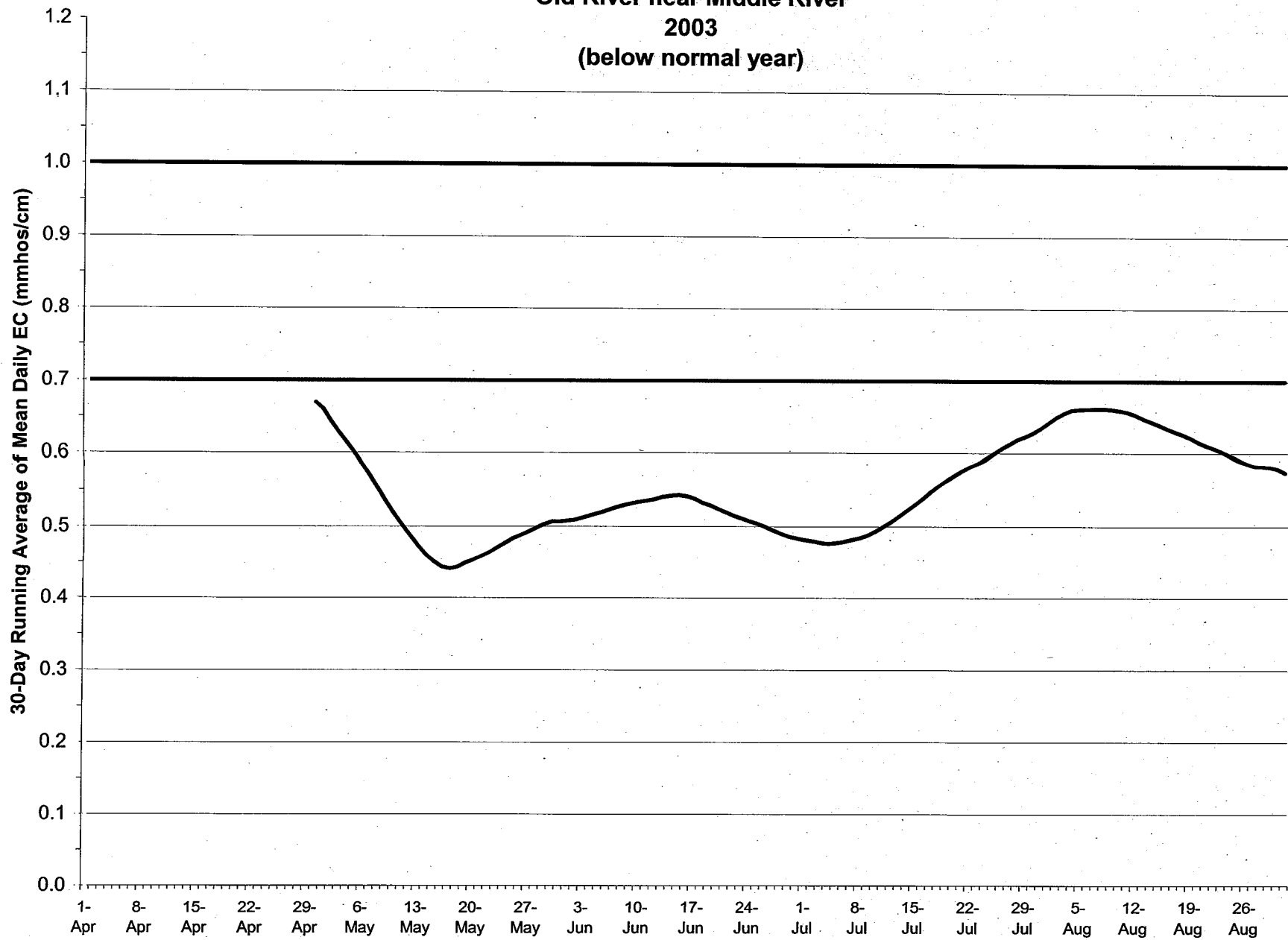
Station C-8
Old River near Middle River
2001
(dry year)



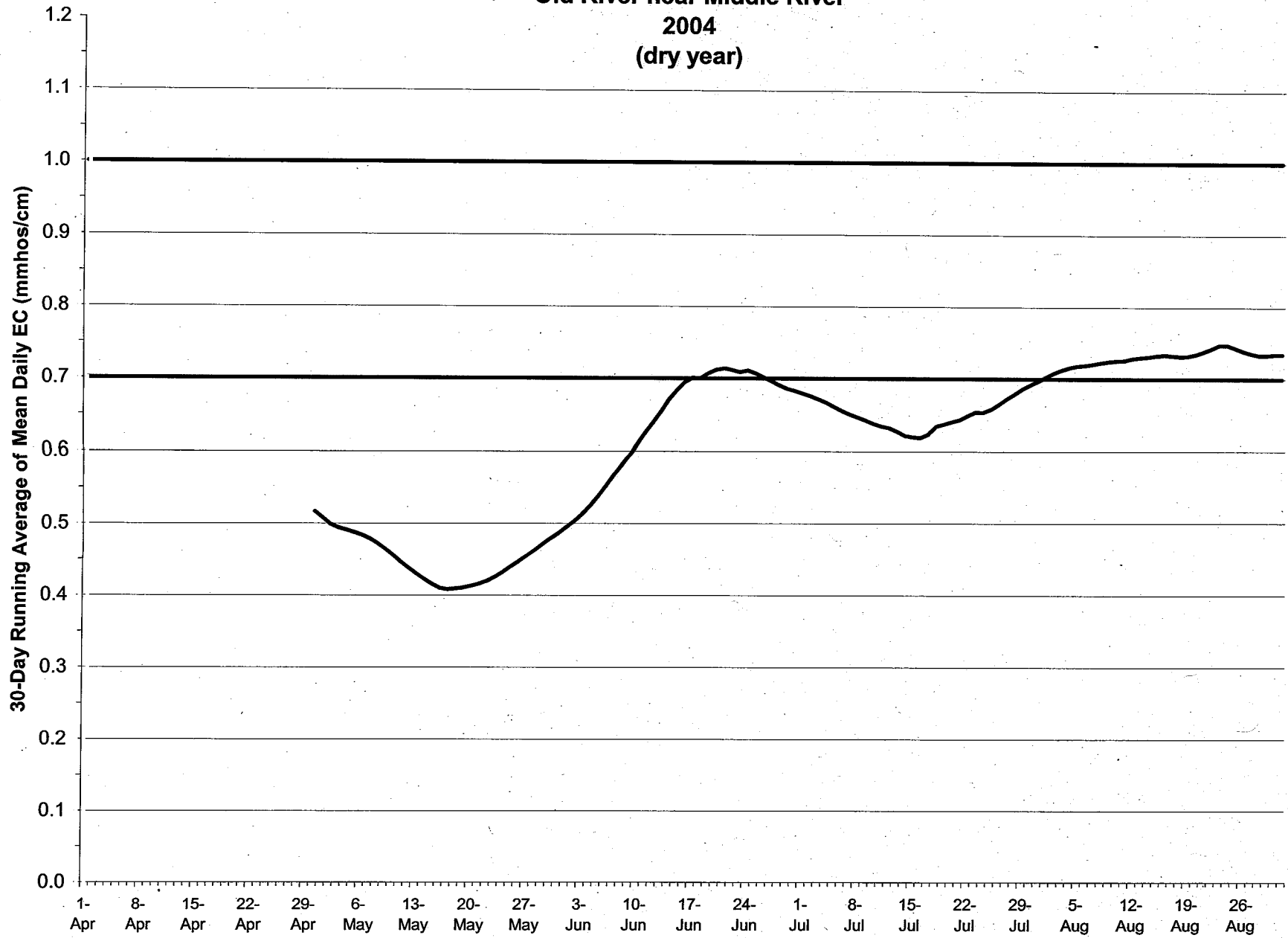
Station C-8
Old River near Middle River
2002
(dry year)



**Station C-8
Old River near Middle River
2003
(below normal year)**



Station C-8
Old River near Middle River
2004
(dry year)



Station C-8
Old River near Middle River
2005
(wet year)

