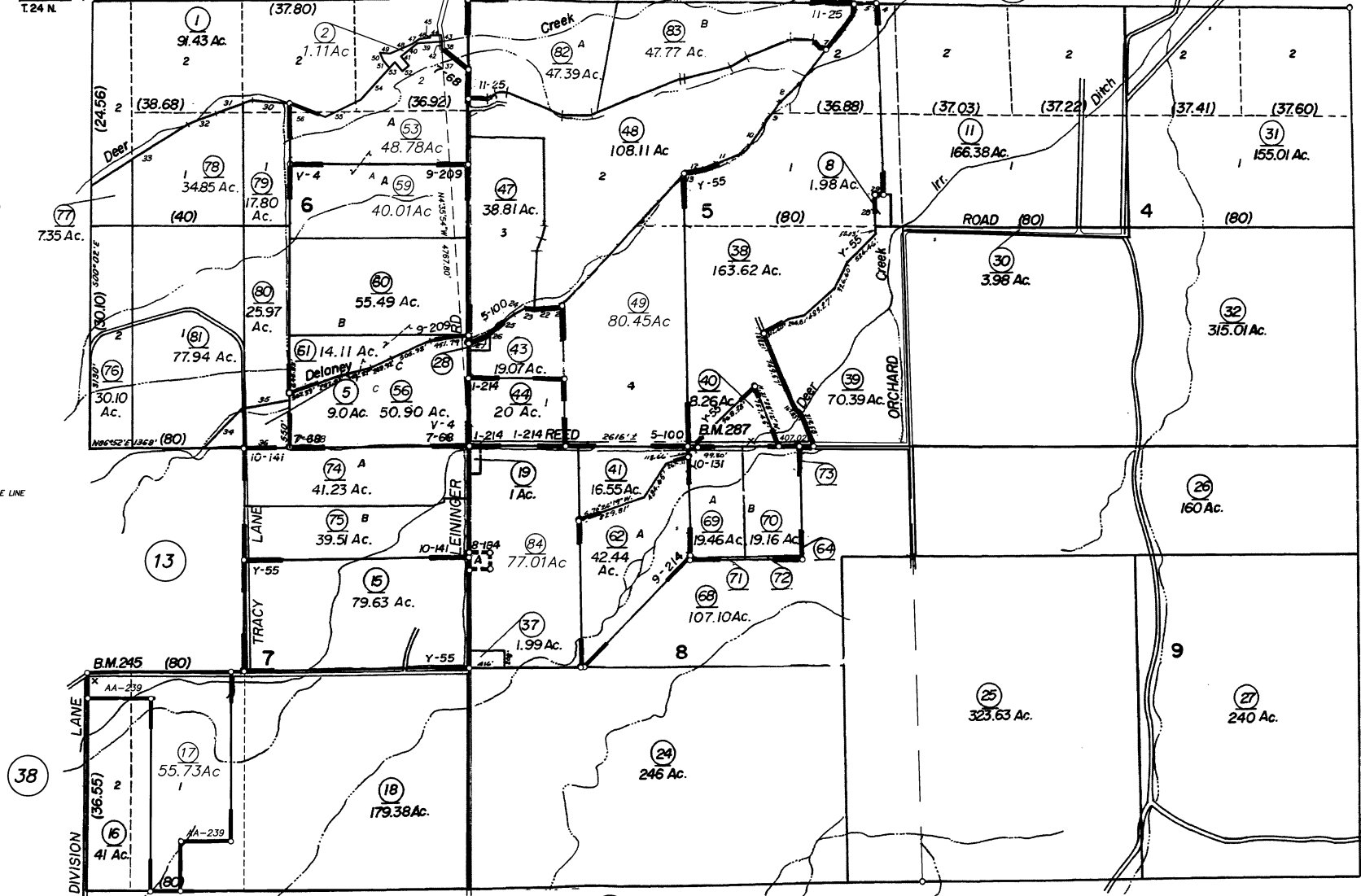


T.25 N.
T.24 N.
R.2 W.
R.1 W.

T.24N., R.1W., M.D.B.&M.

79-04

1 E00°00' 416'
2 S43°00'W 388'
3 N00°00' 416'
4 W00°00' 240.54'
5 W00°00' 368.28'
6 N07°53'E (140°3')
7 N37°33'E 1018.18'
8 N47°35'E 313'
9 N54°42'E 333'
10 N35°53'E 405.8'
11 N68°02'E 488'
12 N80°29'E 246.6'
13 N03°11'W 119.02'
14 N43°54'E (309°42')
15 N38°45'E 353'
16 N61°03'E 261.8'
17 N65°13'E 281'
18 N51°18'E 175.8'
19 N37°26'E 246.3'
20 N53°34'E 223.3'
21 N72°24'E 66.8'
22 N85°59'E 248'
23 S85°57'E 174.2'
24 N68°26'E 133.7'
25 N52°19'E 271.4'
26 N54°32'E 145.5'
27 N64°40'E 329'
28 N00°00' 382.8'
29 E00°00' 112.86'
30 N84°57'W 443'
31 S71°18'W 455'
32 S87°20'W 320'
33 S57°58'W 1382'
34 N44°00'E 640'
35 N81°00'E 570'
36 S83°57'E 318'
37 S51°08'42"E 398.92'
38 S00°12'55"E 81'
39 N86°09'11"E 289.85'
40 N60°59'36"E 251.15'
41 S40°26'25"E 141.91'
42 N00°34'E 1246.8' TIE LINE
43 N08°36'W 78'
44 S88°01'W 128.5'
45 S02°12'W 26.8'
46 S83°06'W 127.9'
47 S34°23'W 102.7'
48 S66°54'W 285.5'
49 N06°13'W 113.5'
50 S84°05'E 100'
51 S40°13'E 30'
52 S49°33'13"W 100'
53 N40°26'23"W 126.82'
54 N47°06'17"E 646.8'
55 N64°02'57"E 467.08'
56 S68°02'09"E 411.82'



R.S. Bk. H, Pg. 10-Ptn. Sec. 5
R.S. Bk. T, P. 62
R.S. Bk. V, Pg. 4
R.S. Bk. Y, Pg. 55
R.S. Bk. AA, Pg. 239

P.M. Bk. 1, Pg. 214-P.M. No. 424
P.M. Bk. 5, Pg. 100-P.M. No. 77-218
P.M. Bk. 7, Pg. 68-P.M. No. 80-132
P.M. Bk. 8, Pg. 184-P.M. No. 86-45, Amended
P.M. Bk. 9, Pg. 209-P.M. No. 91-2

P.M. Bk. 9, Pg. 214-P.M. No. 90-65
P.M. Bk. 10, Pg. 131-P.M. No. 92-9
P.M. Bk. 10, Pg. 141-P.M. No. 92-39
P.M. Bk. 11, Pg. 25-P.M. No. 94-9

Assessor's Map Bk. 79 -Pg. 04
County of Tehama, Calif.