

Appendix L

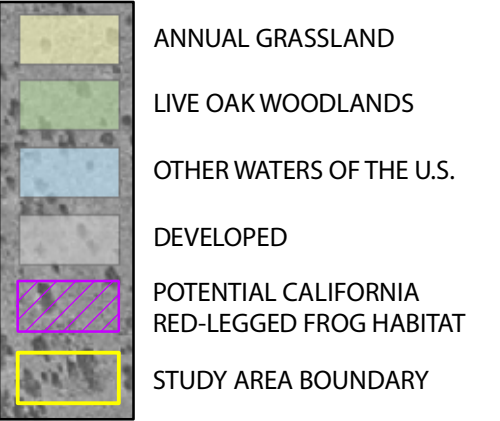
Biological Resources Documented at Battle Creek Project Sites

This new appendix presents biological resources that were documented at two new sites (Jeffcoat and Willow Springs mitigation sites), as well as new biological information documented at the Asbury Diversion Dam project site. The new information presented in this appendix does not necessarily require recirculation for public comment. However, Reclamation and the State Water Board have deemed that the new information presented in this appendix supports significant new information presented in this Draft SEIS/REIR (see Impact 4.1-8 in Section 4.1, Fish, of this document). As a result, the lead agencies have included this appendix here for public comment. The complete new appendix will be presented in the Final EIS/EIR.

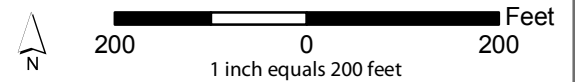
H:\GIS\Projects\battle_creek\03035.03\arcmap\SEIS_maps_11_04\appendix_L_ADO.mxd 02.15.05



FIGURE L-10
BIOLOGICAL RESOURCES
BATTLE CREEK SALMON AND
STEELHEAD RESTORATION PROJECT
ASBURY PUMP HOUSE AND DIVERSION DAM



TYPE	AREA (ACRES)
ANNUAL GRASSLANDS	1.71
LIVE OAK WOODLANDS	2.43
OTHER WATERS OF THE U.S.	1.28
TOTAL AREA AFFECTED	
	5.42



SOURCE: USGS DOQQ 1998

Prepared for the U.S. Department of Interior,
Bureau of Reclamation and the
State Water Resources Control Board
by Jones & Stokes
February 2005

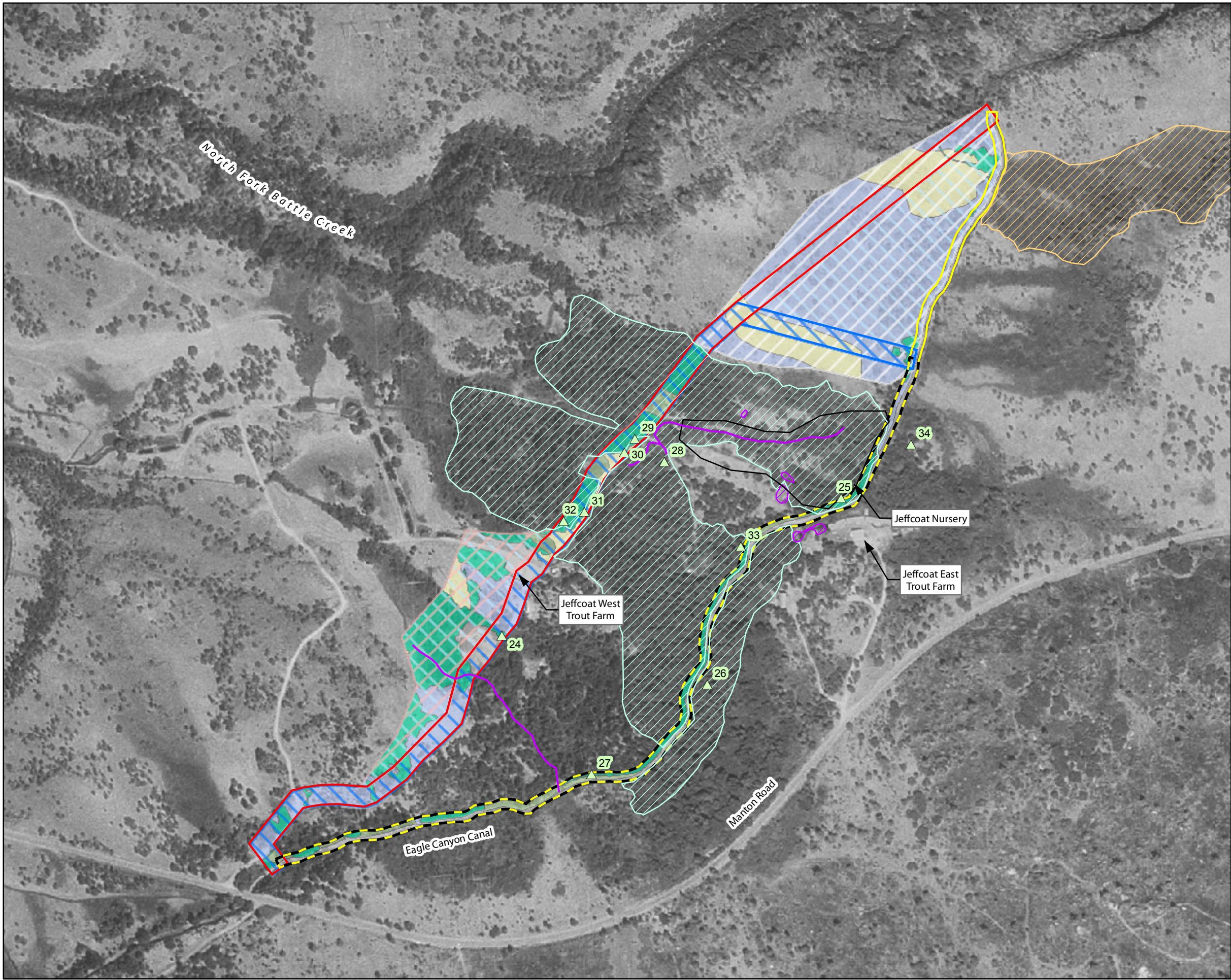
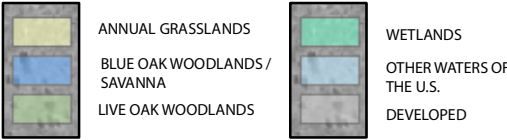
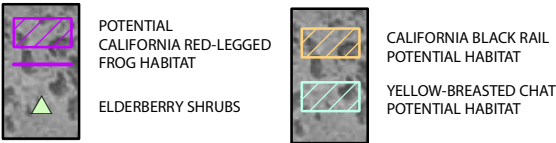


FIGURE L-11
BIOLOGICAL RESOURCES
BATTLE CREEK SALMON AND
STEELHEAD RESTORATION PROJECT
JEFFCOAT MITIGATION SITE

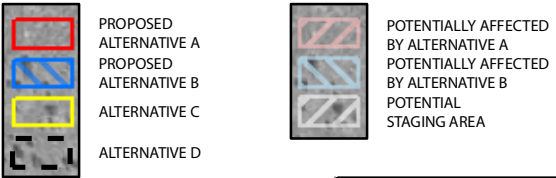
HABITAT TYPES



BIOLOGICAL RESOURCES

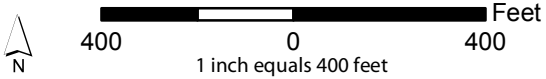


CONSTRUCTION BOUNDARIES



HABITAT TYPE	AREA (ACRES) ¹	
	ALT. A ²	ALT. B ²
ANNUAL GRASSLANDS	4.31	4.31
BLUE OAK WOODLANDS/ SAVANNA	14.13	14.12
LIVE OAK WOODLANDS	0.47	0.47
WETLANDS	2.16	2.16
OTHER WATERS OF THE U.S.	0.01	0.01
TOTAL AREA AFFECTED	21.08	21.07

HABITAT TYPE	ALT. C	ALT. D
ANNUAL GRASSLANDS	3.91	3.91
BLUE OAK WOODLANDS/ SAVANNA	12.21	12.10
LIVE OAK WOODLANDS	0.55	0.55
WETLANDS	1.41	1.41
OTHER WATERS OF THE U.S.	0.67	0.52
TOTAL AREA AFFECTED	18.75	18.49



SOURCE: USGS DOQQ 1998

NOTES: ¹ ACREAGE CALCULATIONS FOR EACH ALTERNATIVE INCLUDE THE ENTIRE POTENTIAL STAGING AREA; HOWEVER, THE FINAL STAGING AREA IS EXPECTED TO COVER ONLY 3 ACRES OF THE CROSS-HATCHED AREA

² ACREAGES WERE BASED ON THE PROPOSED ALIGNMENTS FOR ALTERNATIVES A AND B; HOWEVER, THE ACTUAL ALIGNMENT(S) COULD POTENTIALLY OCCUR IN AND AFFECT HABITAT ANYWHERE WITHIN THE CROSS-HATCHED AREA IDENTIFIED AS "POTENTIALLY AFFECTED BY ALTERNATIVE A/B"

Prepared for the U.S. Department of Interior,
Bureau of Reclamation and the
State Water Resources Control Board
by Jones & Stokes
February 2005

H:\GIS\Projects\battle_creek\0303503\arcmap\SEIS_maps_11_04\appendix_L_W5.mxd 02.15.05

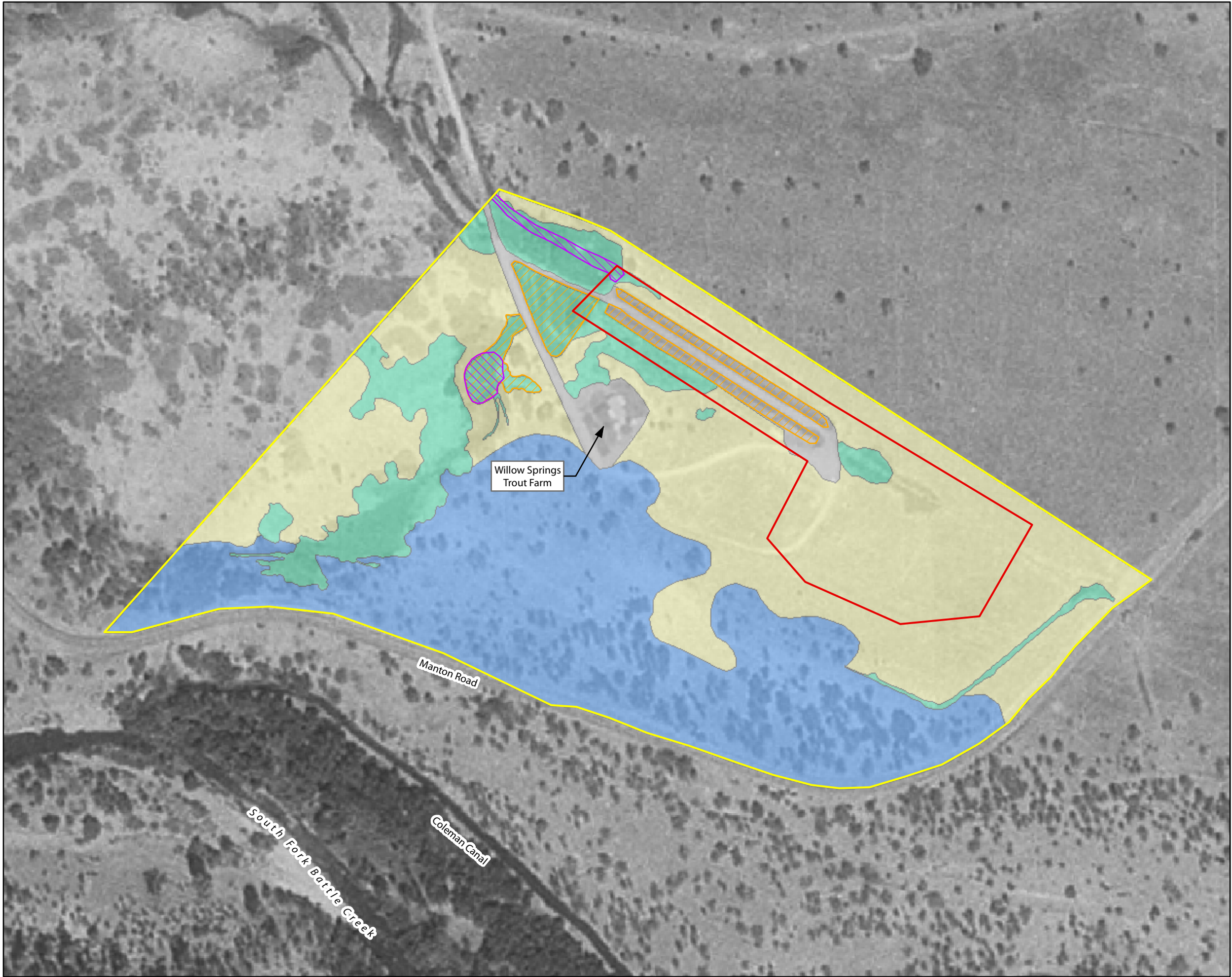
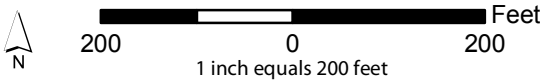


FIGURE L-12
BIOLOGICAL RESOURCES
BATTLE CREEK SALMON AND
STEELHEAD RESTORATION PROJECT
WILLOW SPRINGS MITIGATION SITE
OPTION A—WATER TREATMENT FACILITY



TYPE	AREA (ACRES) ¹
ANNUAL GRASSLANDS	3.51
WETLANDS	0.45
TOTAL AREA AFFECTED	3.96



SOURCE: USGS DOQQ 1998
NOTES: ¹ AREA AFFECTED WITHIN THE CONSTRUCTION BOUNDARY

Prepared for the U.S. Department of Interior,
Bureau of Reclamation and the
State Water Resources Control Board
by Jones & Stokes
February 2005