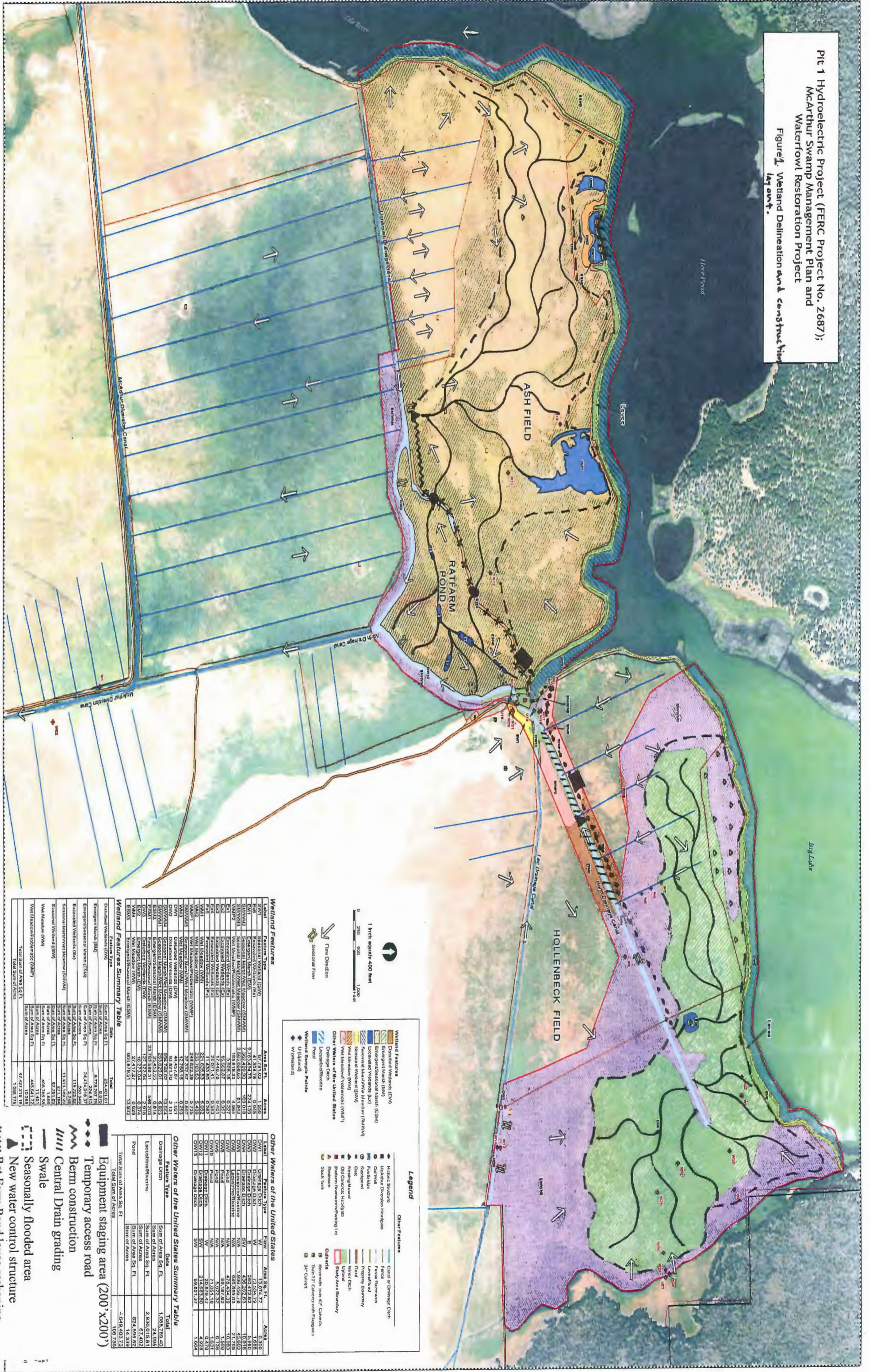


Figure 1: Project Map

Fit 1 Hydroelectric Project (FERC Project No. 2687);
McArthur Swamp Management Plan and
Waterfowl Restoration Project
Figure 1. Wetland Delineation and construction
lay out.



Wetland Features

| Label | Feature Type | Area Sq Ft. | Acres |
|---------|----------------------------------|--------------|---------|
| SW1 | Seasonal Wetland (S1) | 67,791,930 | 1,556 |
| SW2 | Emergent Marsh (EM) | 1,024,424 | 23 |
| EM1 | Emergent Marsh (EM) | 9,761,434.75 | 224.139 |
| EM2 | Emergent Marsh (EM) | 7,967,409.60 | 182.018 |
| SW1W1 | Seasonal Wetland (S1) with Water | 3,463,684.65 | 79.043 |
| SW1W2 | Seasonal Wetland (S1) with Water | 15,522,017 | 352.73 |
| SW1W3 | Seasonal Wetland (S1) with Water | 24,071.41 | 0.55 |
| SW1W4 | Seasonal Wetland (S1) with Water | 11,433.60 | 0.26 |
| SW1W5 | Seasonal Wetland (S1) with Water | 2,812,625.5 | 64.4 |
| SW1W6 | Seasonal Wetland (S1) with Water | 2,812,625.5 | 64.4 |
| SW1W7 | Seasonal Wetland (S1) with Water | 2,812,625.5 | 64.4 |
| SW1W8 | Seasonal Wetland (S1) with Water | 2,812,625.5 | 64.4 |
| SW1W9 | Seasonal Wetland (S1) with Water | 2,812,625.5 | 64.4 |
| SW1W10 | Seasonal Wetland (S1) with Water | 2,812,625.5 | 64.4 |
| SW1W11 | Seasonal Wetland (S1) with Water | 2,812,625.5 | 64.4 |
| SW1W12 | Seasonal Wetland (S1) with Water | 2,812,625.5 | 64.4 |
| SW1W13 | Seasonal Wetland (S1) with Water | 2,812,625.5 | 64.4 |
| SW1W14 | Seasonal Wetland (S1) with Water | 2,812,625.5 | 64.4 |
| SW1W15 | Seasonal Wetland (S1) with Water | 2,812,625.5 | 64.4 |
| SW1W16 | Seasonal Wetland (S1) with Water | 2,812,625.5 | 64.4 |
| SW1W17 | Seasonal Wetland (S1) with Water | 2,812,625.5 | 64.4 |
| SW1W18 | Seasonal Wetland (S1) with Water | 2,812,625.5 | 64.4 |
| SW1W19 | Seasonal Wetland (S1) with Water | 2,812,625.5 | 64.4 |
| SW1W20 | Seasonal Wetland (S1) with Water | 2,812,625.5 | 64.4 |
| SW1W21 | Seasonal Wetland (S1) with Water | 2,812,625.5 | 64.4 |
| SW1W22 | Seasonal Wetland (S1) with Water | 2,812,625.5 | 64.4 |
| SW1W23 | Seasonal Wetland (S1) with Water | 2,812,625.5 | 64.4 |
| SW1W24 | Seasonal Wetland (S1) with Water | 2,812,625.5 | 64.4 |
| SW1W25 | Seasonal Wetland (S1) with Water | 2,812,625.5 | 64.4 |
| SW1W26 | Seasonal Wetland (S1) with Water | 2,812,625.5 | 64.4 |
| SW1W27 | Seasonal Wetland (S1) with Water | 2,812,625.5 | 64.4 |
| SW1W28 | Seasonal Wetland (S1) with Water | 2,812,625.5 | 64.4 |
| SW1W29 | Seasonal Wetland (S1) with Water | 2,812,625.5 | 64.4 |
| SW1W30 | Seasonal Wetland (S1) with Water | 2,812,625.5 | 64.4 |
| SW1W31 | Seasonal Wetland (S1) with Water | 2,812,625.5 | 64.4 |
| SW1W32 | Seasonal Wetland (S1) with Water | 2,812,625.5 | 64.4 |
| SW1W33 | Seasonal Wetland (S1) with Water | 2,812,625.5 | 64.4 |
| SW1W34 | Seasonal Wetland (S1) with Water | 2,812,625.5 | 64.4 |
| SW1W35 | Seasonal Wetland (S1) with Water | 2,812,625.5 | 64.4 |
| SW1W36 | Seasonal Wetland (S1) with Water | 2,812,625.5 | 64.4 |
| SW1W37 | Seasonal Wetland (S1) with Water | 2,812,625.5 | 64.4 |
| SW1W38 | Seasonal Wetland (S1) with Water | 2,812,625.5 | 64.4 |
| SW1W39 | Seasonal Wetland (S1) with Water | 2,812,625.5 | 64.4 |
| SW1W40 | Seasonal Wetland (S1) with Water | 2,812,625.5 | 64.4 |
| SW1W41 | Seasonal Wetland (S1) with Water | 2,812,625.5 | 64.4 |
| SW1W42 | Seasonal Wetland (S1) with Water | 2,812,625.5 | 64.4 |
| SW1W43 | Seasonal Wetland (S1) with Water | 2,812,625.5 | 64.4 |
| SW1W44 | Seasonal Wetland (S1) with Water | 2,812,625.5 | 64.4 |
| SW1W45 | Seasonal Wetland (S1) with Water | 2,812,625.5 | 64.4 |
| SW1W46 | Seasonal Wetland (S1) with Water | 2,812,625.5 | 64.4 |
| SW1W47 | Seasonal Wetland (S1) with Water | 2,812,625.5 | 64.4 |
| SW1W48 | Seasonal Wetland (S1) with Water | 2,812,625.5 | 64.4 |
| SW1W49 | Seasonal Wetland (S1) with Water | 2,812,625.5 | 64.4 |
| SW1W50 | Seasonal Wetland (S1) with Water | 2,812,625.5 | 64.4 |
| SW1W51 | Seasonal Wetland (S1) with Water | 2,812,625.5 | 64.4 |
| SW1W52 | Seasonal Wetland (S1) with Water | 2,812,625.5 | 64.4 |
| SW1W53 | Seasonal Wetland (S1) with Water | 2,812,625.5 | 64.4 |
| SW1W54 | Seasonal Wetland (S1) with Water | 2,812,625.5 | 64.4 |
| SW1W55 | Seasonal Wetland (S1) with Water | 2,812,625.5 | 64.4 |
| SW1W56 | Seasonal Wetland (S1) with Water | 2,812,625.5 | 64.4 |
| SW1W57 | Seasonal Wetland (S1) with Water | 2,812,625.5 | 64.4 |
| SW1W58 | Seasonal Wetland (S1) with Water | 2,812,625.5 | 64.4 |
| SW1W59 | Seasonal Wetland (S1) with Water | 2,812,625.5 | 64.4 |
| SW1W60 | Seasonal Wetland (S1) with Water | 2,812,625.5 | 64.4 |
| SW1W61 | Seasonal Wetland (S1) with Water | 2,812,625.5 | 64.4 |
| SW1W62 | Seasonal Wetland (S1) with Water | 2,812,625.5 | 64.4 |
| SW1W63 | Seasonal Wetland (S1) with Water | 2,812,625.5 | 64.4 |
| SW1W64 | Seasonal Wetland (S1) with Water | 2,812,625.5 | 64.4 |
| SW1W65 | Seasonal Wetland (S1) with Water | 2,812,625.5 | 64.4 |
| SW1W66 | Seasonal Wetland (S1) with Water | 2,812,625.5 | 64.4 |
| SW1W67 | Seasonal Wetland (S1) with Water | 2,812,625.5 | 64.4 |
| SW1W68 | Seasonal Wetland (S1) with Water | 2,812,625.5 | 64.4 |
| SW1W69 | Seasonal Wetland (S1) with Water | 2,812,625.5 | 64.4 |
| SW1W70 | Seasonal Wetland (S1) with Water | 2,812,625.5 | 64.4 |
| SW1W71 | Seasonal Wetland (S1) with Water | 2,812,625.5 | 64.4 |
| SW1W72 | Seasonal Wetland (S1) with Water | 2,812,625.5 | 64.4 |
| SW1W73 | Seasonal Wetland (S1) with Water | 2,812,625.5 | 64.4 |
| SW1W74 | Seasonal Wetland (S1) with Water | 2,812,625.5 | 64.4 |
| SW1W75 | Seasonal Wetland (S1) with Water | 2,812,625.5 | 64.4 |
| SW1W76 | Seasonal Wetland (S1) with Water | 2,812,625.5 | 64.4 |
| SW1W77 | Seasonal Wetland (S1) with Water | 2,812,625.5 | 64.4 |
| SW1W78 | Seasonal Wetland (S1) with Water | 2,812,625.5 | 64.4 |
| SW1W79 | Seasonal Wetland (S1) with Water | 2,812,625.5 | 64.4 |
| SW1W80 | Seasonal Wetland (S1) with Water | 2,812,625.5 | 64.4 |
| SW1W81 | Seasonal Wetland (S1) with Water | 2,812,625.5 | 64.4 |
| SW1W82 | Seasonal Wetland (S1) with Water | 2,812,625.5 | 64.4 |
| SW1W83 | Seasonal Wetland (S1) with Water | 2,812,625.5 | 64.4 |
| SW1W84 | Seasonal Wetland (S1) with Water | 2,812,625.5 | 64.4 |
| SW1W85 | Seasonal Wetland (S1) with Water | 2,812,625.5 | 64.4 |
| SW1W86 | Seasonal Wetland (S1) with Water | 2,812,625.5 | 64.4 |
| SW1W87 | Seasonal Wetland (S1) with Water | 2,812,625.5 | 64.4 |
| SW1W88 | Seasonal Wetland (S1) with Water | 2,812,625.5 | 64.4 |
| SW1W89 | Seasonal Wetland (S1) with Water | 2,812,625.5 | 64.4 |
| SW1W90 | Seasonal Wetland (S1) with Water | 2,812,625.5 | 64.4 |
| SW1W91 | Seasonal Wetland (S1) with Water | 2,812,625.5 | 64.4 |
| SW1W92 | Seasonal Wetland (S1) with Water | 2,812,625.5 | 64.4 |
| SW1W93 | Seasonal Wetland (S1) with Water | 2,812,625.5 | 64.4 |
| SW1W94 | Seasonal Wetland (S1) with Water | 2,812,625.5 | 64.4 |
| SW1W95 | Seasonal Wetland (S1) with Water | 2,812,625.5 | 64.4 |
| SW1W96 | Seasonal Wetland (S1) with Water | 2,812,625.5 | 64.4 |
| SW1W97 | Seasonal Wetland (S1) with Water | 2,812,625.5 | 64.4 |
| SW1W98 | Seasonal Wetland (S1) with Water | 2,812,625.5 | 64.4 |
| SW1W99 | Seasonal Wetland (S1) with Water | 2,812,625.5 | 64.4 |
| SW1W100 | Seasonal Wetland (S1) with Water | 2,812,625.5 | 64.4 |

Other Waters of the United States

| Label | Feature Type | Area Sq Ft. | Acres |
|-------|----------------|--------------|--------|
| OW1 | Drainage Ditch | 13,012,72 | 0.300 |
| OW2 | Drainage Ditch | 269,372.62 | 6.160 |
| OW3 | Drainage Ditch | 436,392.63 | 10.016 |
| OW4 | Drainage Ditch | 1,408,456.78 | 32.002 |
| OW5 | Drainage Ditch | 476,424.39 | 10.883 |
| OW6 | Drainage Ditch | 69,187.62 | 1.580 |
| OW7 | Drainage Ditch | 7,027.38 | 0.160 |
| OW8 | Drainage Ditch | 20,879.47 | 0.476 |
| OW9 | Drainage Ditch | 214,683.90 | 4.929 |
| OW10 | Drainage Ditch | 89,851.51 | 2.054 |

Other Waters of the United States Summary Table

| Feature Type | Sum of Area Sq. Ft. | Sum of Area Sq. Ft. | Sum of Area Sq. Ft. |
|----------------------------------|---------------------|---------------------|---------------------|
| Drainage Ditch | 2,649,480.23 | 1,028,789.40 | 24,095 |
| Levee/Riverine | 67,402 | 2,936,015.81 | 67,402 |
| Pond | 624,599.92 | 14,339 | 14,339 |
| Total Sum of Area Sq. Ft. | 3,341,482.15 | 3,009,143.61 | 76,846 |

- Wetland Features
- Other Waters of the United States
- Legend
- Other Features
- Flow
- Seasonal flooded area
- Temporarily access road
- Berm construction
- Central Drain grading
- Swale
- Seasonally flooded area
- New water control structure
- Rat Farm Pond levee reshaping
- Levee rock swale crossing
- New Rio Lake levee rim run