

APPENDIX I
VISUAL ASSESSMENT UNITS AND PHOTOGRAPHS

Upper North Fork Feather River
Hydroelectric Project

Revised Draft
Environmental Impact Report

State Water Resources Control Board
Sacramento, CA

May 2020

Appendix I.

Visual Assessment Units and Photographs

This appendix provides an overview of the Visual Assessment Units and Key Observation Points (KOPs) described in the Aesthetics section of the Environmental Impact Report. Table 1 summarizes the locations and views of the KOPs. Photographs for each KOP, numbered according to Table 1, are provided after the table.

Table 1. Visual Assessment Units and Key Observation Points

| VAU Label | KOP # | Photo # | Description of Key Observation Point |
|--|-------|---------|---|
| Marvin Alexander Day Use Area/Prattville Intake (MA) | | | |
| MA | 1 | 1a | View of Lake Almanor looking southeast from the Marvin Alexander Day Use Area waterfront |
| MA | 1 | 1b | View of Lake Almanor looking north from the Marvin Alexander Day Use Area waterfront |
| MA | 1 | 1c | Prattville intake as seen from the Marvin Alexander Day Use Area |
| MA | 1 | 1d | The Marvin Alexander Day Use Area as seen from the waterfront |
| MA | 2 | 2a | Prattville intake as seen from the Marvin Alexander Day Use Area jetty |
| MA | 2 | 2b | View of Lake Almanor looking east/northeast (toward Lake Almanor Country Club) from the Marvin Alexander Day Use Area jetty |
| MA | 2 | 2c | View of Lake Almanor looking southeast from the Marvin Alexander Day Use Area jetty |
| MA | 3 | 3 | View of the Prattville intake from the Marvin Alexander Day Use Area parking lot |
| Doug Naef Building driveway @ Almanor Drive West (NAEF) | | | |
| NAEF | 1 | 4 | View of Prattville intake from driveway entrance to the Doug Naef building at its intersection with Almanor Drive West |
| Plumas Pines Resort (PP) | | | |
| PP | 1 | 5 | View looking southeast toward the Prattville intake from the lawn of Plumas Pines Resort restaurant |
| PP | 2 | 6a | View of Lake Almanor looking east toward the Prattville intake from Plumas Pines Resort boat dock |

Table 1. Visual Assessment Units and Key Observation Points

| VAU Label | KOP # | Photo # | Description of Key Observation Point |
|--|--------------|----------------|---|
| PP | 2 | 6b | View of Lake Almanor looking southeast toward the Prattville intake from Plumas Pines Resort boat dock |
| State Route 89 at Canyon Dam (SR89) | | | |
| SR89 | 1 | 7 | View of the Canyon dam intake/spillway from State Route 89 northbound |
| SR89 | 2 | 8a | View of the Canyon dam intake from State Route 89 northbound |
| SR89 | 2 | 8b | View of the Canyon dam intake from State Route 89 southbound |
| SR89 | 2 | 8c | View of the Canyon dam intake from State Route 89 southbound |
| Canyon Dam Picnic Area (CDPA) | | | |
| CDPA | 1 | 9a | View looking toward the Canyon dam spillway/State Route 89 from the Canyon Dam Picnic Area waterfront |
| CDPA | 1 | 9b | View looking west toward Canyon dam intake and spillway from the Canyon Dam Picnic Area waterfront |
| CDPA | 1 | 9c | View of Lake Almanor looking northeast from the Canyon Dam Picnic Area waterfront |
| CDPA | 2 | 10a | View of Lake Almanor looking northeast from the Canyon Dam Picnic Area parking lot |
| CDPA | 2 | 10b | View looking west toward the Canyon dam intake and spillway from the Canyon Dam Picnic Area parking lot |
| CDPA | 2 | 10c | View looking west toward the Canyon dam intake and spillway from the Canyon Dam Picnic Area parking lot |
| County Road 147 (CoRD147) | | | |
| CoRD147 | 1 | 11a | View of Lake Almanor looking west toward Canyon dam from scenic overlook on County Road 147 |
| CoRD147 | 1 | 11b | View of Lake Almanor looking northwest toward Canyon dam from scenic overlook on County Road 147 |
| CoRD147 | 2 | 12 | View of Lake Almanor looking west toward Canyon dam from southbound lane of County Road 147 |
| Canyon Dam Boat Launch (CDBL) | | | |
| CDBL | 1 | 13a | View looking south toward Canyon dam intake/spillway from the Canyon Dam Boat Launch parking lot |
| CDBL | 1 | 13b | View looking east toward Canyon dam intake/spillway from the Canyon Dam Boat Launch parking lot |

Table 1. Visual Assessment Units and Key Observation Points

| VAU Label | KOP # | Photo # | Description of Key Observation Point |
|-----------------------------------|--------------|----------------|--|
| CDBL | 1 | 13c | View looking north toward Canyon dam intake/spillway from the Canyon Dam Boat Launch parking lot |
| Belden Forebay (BF) | | | |
| BF | 1 | 14 | View of Belden forebay looking south from Seneca Road |
| BF | 2 | 15 | View of Belden forebay looking south from Seneca Road near its intersection with Caribou Road |
| Caribou Compound (CAR) | | | |
| CAR | 1 | 16 | Typical building in the Caribou compound |
| CAR | 2 | 17a | View of Belden forebay looking across channel from fisherman's access parking area |
| CAR | 2 | 17b | View of Belden forebay looking downstream from fisherman's access parking area |
| Butt Valley Reservoir (BV) | | | |
| BV | 1 | 18 | View looking downstream towards Butt Valley reservoir below Butt Valley powerhouse |
| BV | 2 | 19 | View of Butt Valley reservoir from Butt Valley dam |



Photo 1a, VAU MA, KOP 1.
View of Lake Almanor looking east from Marvin Alexander Beach.



Photo 1b, VAU MA, KOP 1.
View of Lake Almanor looking north from the Marvin Alexander Day Use Area waterfront.



Photo 1c, VAU MA, KOP 1.
Prattville intake as seen from the Marvin Alexander Day Use Area.



Photo 1d, VAU MA, KOP 1.
The Marvin Alexander Day Use Area as seen from the waterfront.



Photo 2a, VAU MA, KOP 2.

Prattville intake as seen from Marvin Alexander Day Use Area jetty. Mount Lassen is in the background.



Photo 2b, VAU MA, KOP 2.

View of Lake Almanor looking east/northeast (toward Lake Almanor Country Club) from the Marvin Alexander Day Use Area jetty.



Photo 2c, VAU MA, KOP 2.

View of Lake Almanor looking southeast from the Marvin Alexander Day Use Area jetty.

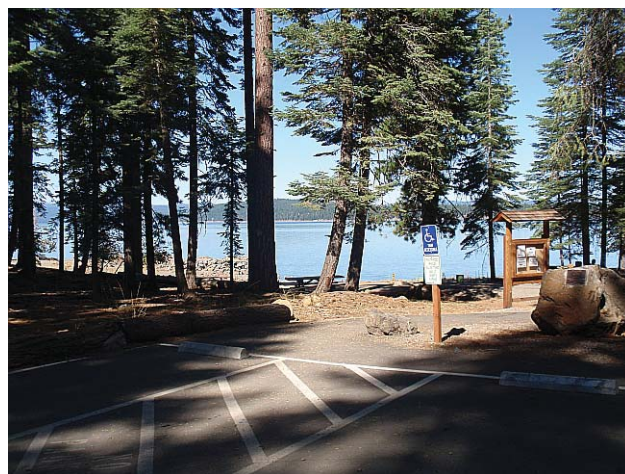


Photo 3, VAU MA, KOP 3.

View of the Prattville intake from the Marvin Alexander Day Use Area parking lot.



Photo 4, VAU NAEF, KOP 1.

View of Prattville intake from driveway entrance to the Doug Naef building at its intersection with Almanor Drive West.



Photo 5, VAU PP, KOP 1.

View looking southeast toward the Prattville intake from the lawn of Plumas Pines Resort restaurant.

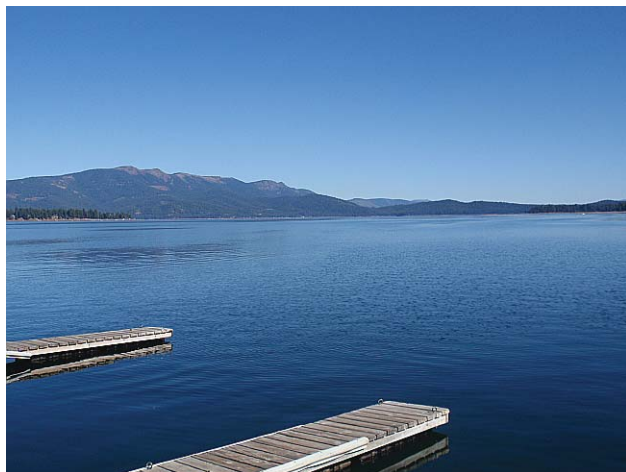


Photo 6a, VAU PP, KOP 2.

View of Lake Almanor looking east toward the Prattville intake from Plumas Pines Resort boat dock.



Photo 6b, VAU PP, KOP 2.

View of Lake Almanor looking southeast toward the Prattville intake from Plumas Pines Resort boat dock.



Photo 7, VAU SR89, KOP 1.

View of the Canyon dam intake/spillway from State Route 89 northbound.



Photo 8a, VAU SR89, KOP 2.

View of the Canyon dam intake from State Route 89 northbound.

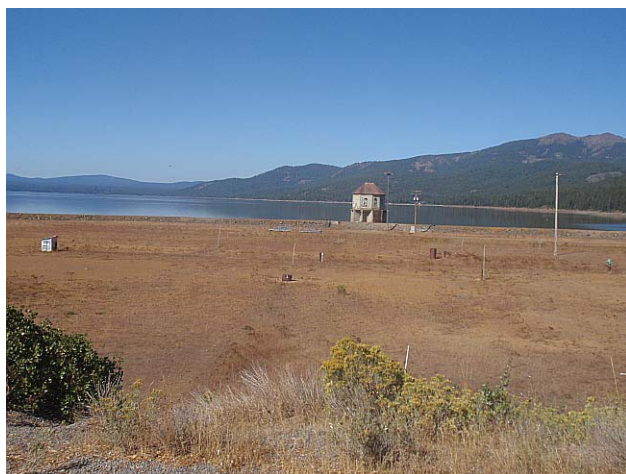


Photo 8b, VAU SR89, KOP 2.

View of the Canyon dam intake from State Route 89 southbound.

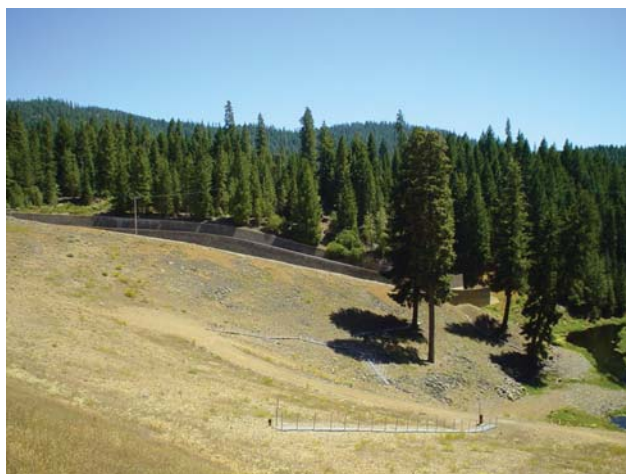


Photo 8c, VAU SR89, KOP 2.

View of Canyon dam spillway from State Route 89 southbound.



Photo 9a, VAU CDPA, KOP 1.

View looking toward the Canyon dam spillway/State Route 89 from the Canyon Dam Picnic Area waterfront.



Photo 9b, VAU CDPA, KOP 1.

View looking west toward Canyon dam intake and spillway from the Canyon Dam Picnic Area waterfront.



Photo 9c, VAU CDPA, KOP 1.

View of Lake Almanor looking northeast from the Canyon Dam Picnic Area waterfront.



Photo 10a, VAU CDPA, KOP 2.

View of Lake Almanor looking northeast from the Canyon Dam Picnic Area parking lot.



Photo 10b, VAU CDPA, KOP 2.

View looking west toward the Canyon dam intake and spillway from the Canyon Dam Picnic Area parking lot.



Photo 10c, VAU CDPA, KOP 2.

View looking west toward the Canyon dam intake and spillway from the Canyon Dam Picnic Area parking lot.



Photo 11a, VAU CoRD147, KOP 1.

View of Lake Almanor looking west toward Canyon dam from scenic overlook on County Road 147.



Photo 11b, VAU CoRD147, KOP 1.

View of Lake Almanor looking northwest toward Canyon dam from scenic overlook on County Road 147.



Photo 12, VAU CoRD147, KOP 2.

View of Lake Almanor looking west toward Canyon dam from southbound lane of County Road 147.



Photo 13a, VAU CDBL, KOP 1.

View looking south toward Canyon dam intake/spillway from the Canyon Dam Boat Launch parking lot.



Photo 13b, VAU CDBL, KOP 1.

View looking east toward Canyon dam intake/spillway from the Canyon Dam Boat Launch parking lot.



Photo 13c, VAU CDBL, KOP 1.

View looking north toward Canyon dam intake/spillway from the Canyon Dam Boat Launch parking lot.



Photo 14, VAU BV, KOP 1.

View looking downstream towards Butt Valley reservoir below Butt Valley powerhouse.



Photo 15, VAU BV, KOP 2.

View of Butt Valley reservoir from Butt Valley dam.



Photo 16, VAU BV, KOP 3.

View of Butt Valley reservoir looking north.