

*Cu Metals Marina Study
– Lower Newport Bay*

*OC Coastkeeper -Ray Hiemstra
Santa Ana RWQCB - *Linda Candelaria, PhD
City of Newport Beach*

Background

- *Cu boat paints are #1 source of Cu in Newport Bay ~ 60,000lbs/yr – passive leaching+ hull cleaning*
- *Shelter Island Cu TMDL, NB Metals TMDL*
- *DPR –reevaluating Cu boat paints registration*

Objectives

- *Determine whether Cu antifouling boat paints are a significant source of Cu to the water & sediments in marinas and Lower Newport Bay*
- *Determine metal concentrations in water and sediment in marinas and adjacent channel sites*
- *Determine toxicity in marinas & channels*

Methodology -sampling

- *Collect water and sediment samples throughout Lower Newport Bay*
- *8 marinas & adjacent channels
(3 stations/marina, 1 channel station)
2 storm drains, 1 shipyard station*
- *3 sampling events: May, August, December
-August –Toxicity/TOC/PSA -10 samples
-November –additional toxicity tests*

Methodology cont.

- *Chemical Analysis*

Water – dissolved & total metals, TSS, DOC, salinity

Sediment – metals

Aug – PCBs, PAHs, toxicity (water & sed) ,
TOC, PSA, AVS/SEM (sediment) -10 samples

- *Toxicity Analysis* (10 samples)

-*Water* – mussel embryo,

-*Sediment* – amphipod (*Eohaustorius*),

–sediment/water interface, pore water

Newport Marinas Copper Study Marinas and Sites



0.9 0 0.9 1.8 Miles



Results

Water –

Only Dissolved Cu above CTR standards

-chronic-all marinas, acute 6/8 marinas

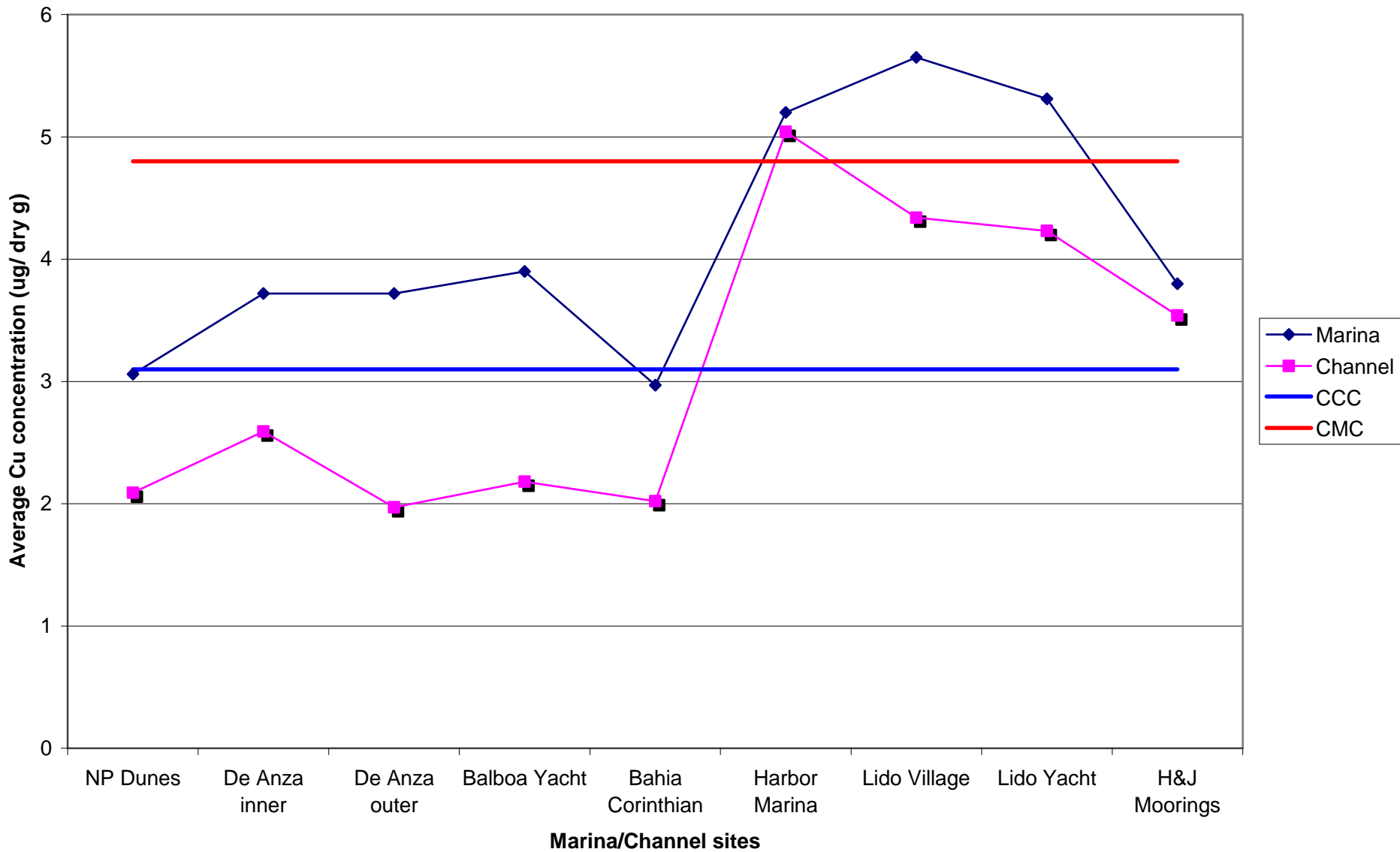
(tested Cu, Cd, Cr, Zn, As, Hg, Pb, Ni)

Mean dissolved Cu concentrations in marinas

above mean channel Cu concentrations in most sites (not statistically significant)

No water toxicity

Comparison of average Dissolved Cu concentrations (ug/ dry g) at marina and channel sites



Results

Sediment –

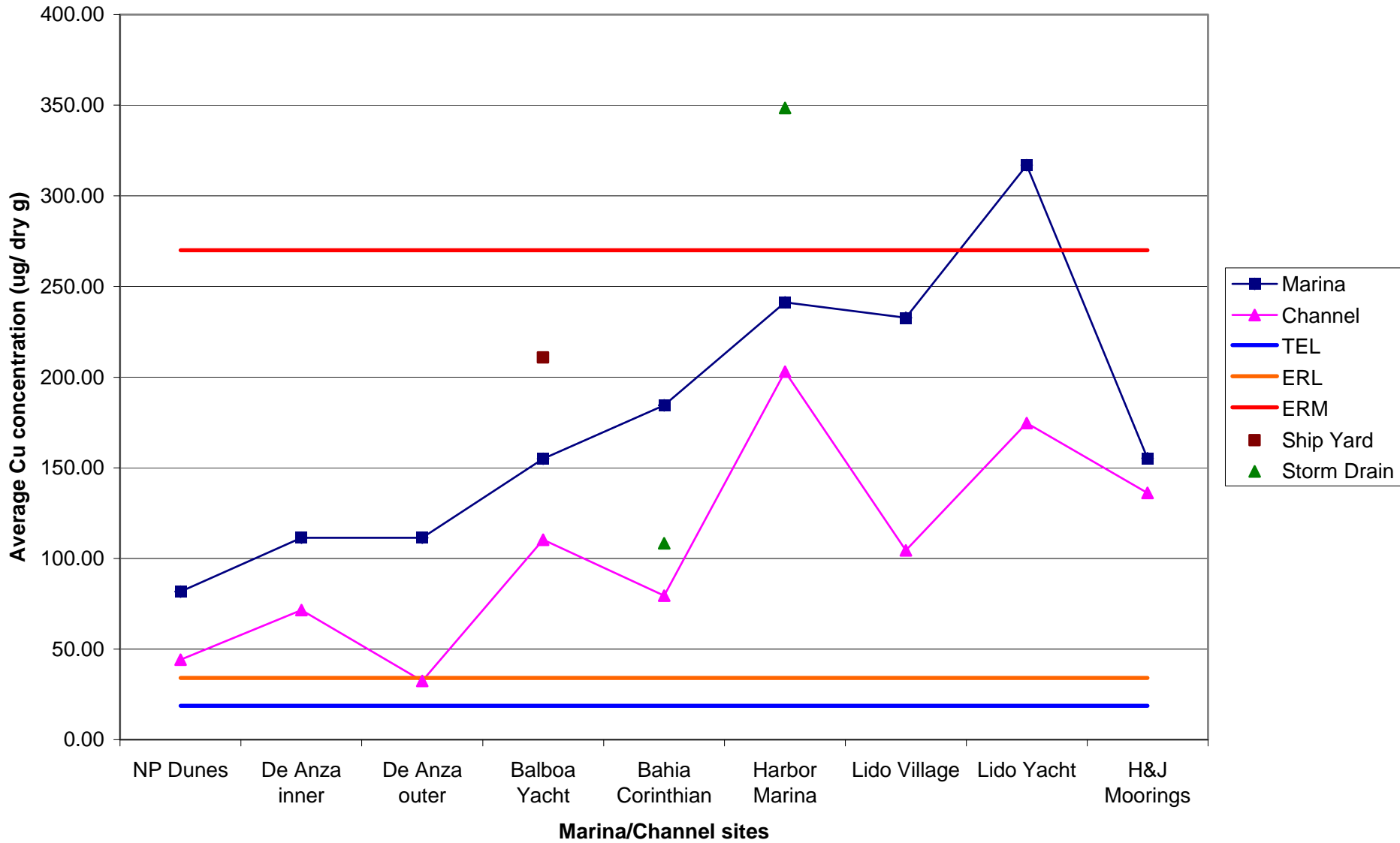
Sediment Cu, Hg, Zn above ERM

-Cu, Hg 5/8 marinas, Zn 3/8 marinas

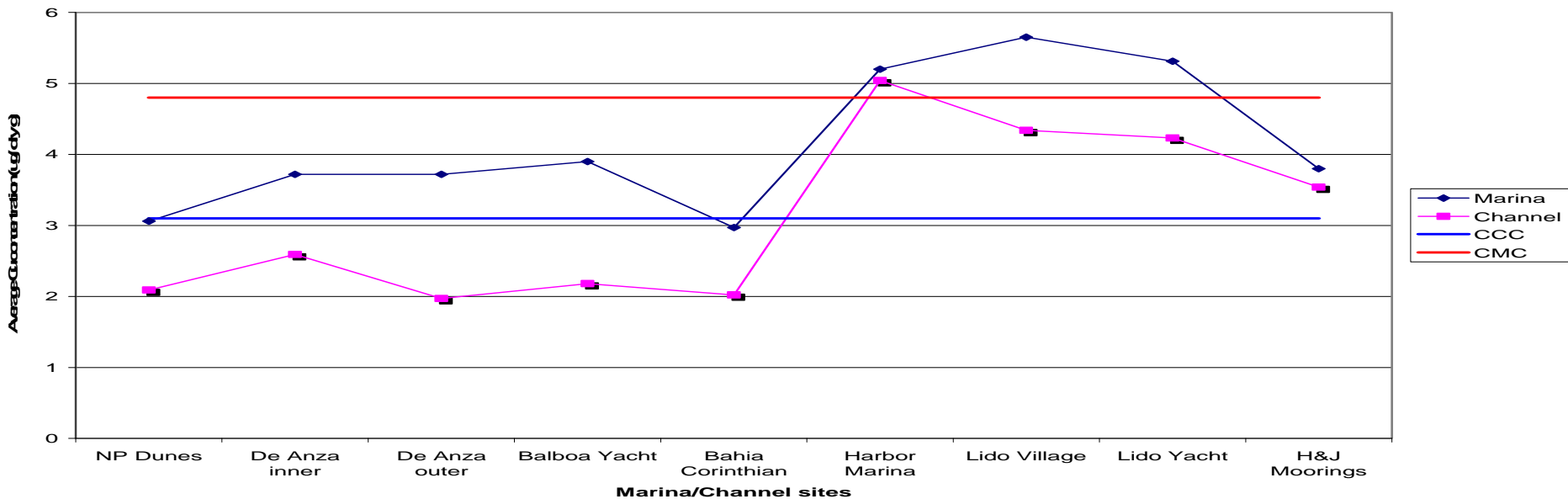
Marina means higher than channel means in most sites -Cu, Zn

(statistically significant)

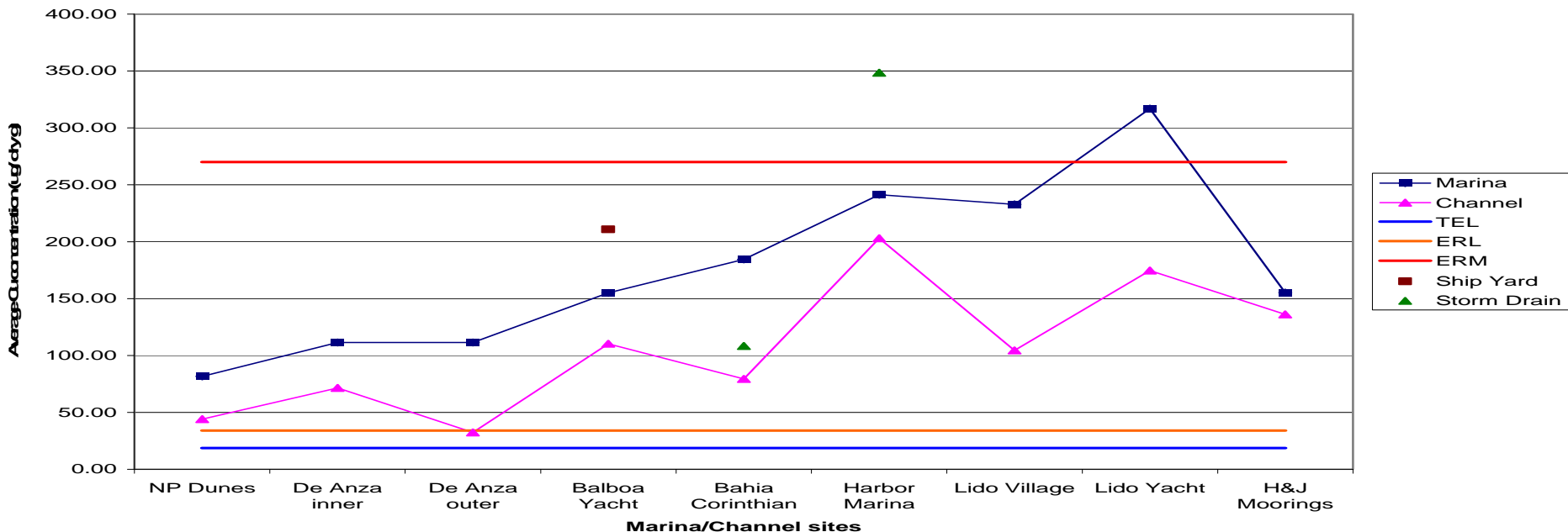
Comparison of average Cu concentrations (ug/ dry g) at marina and channel sites



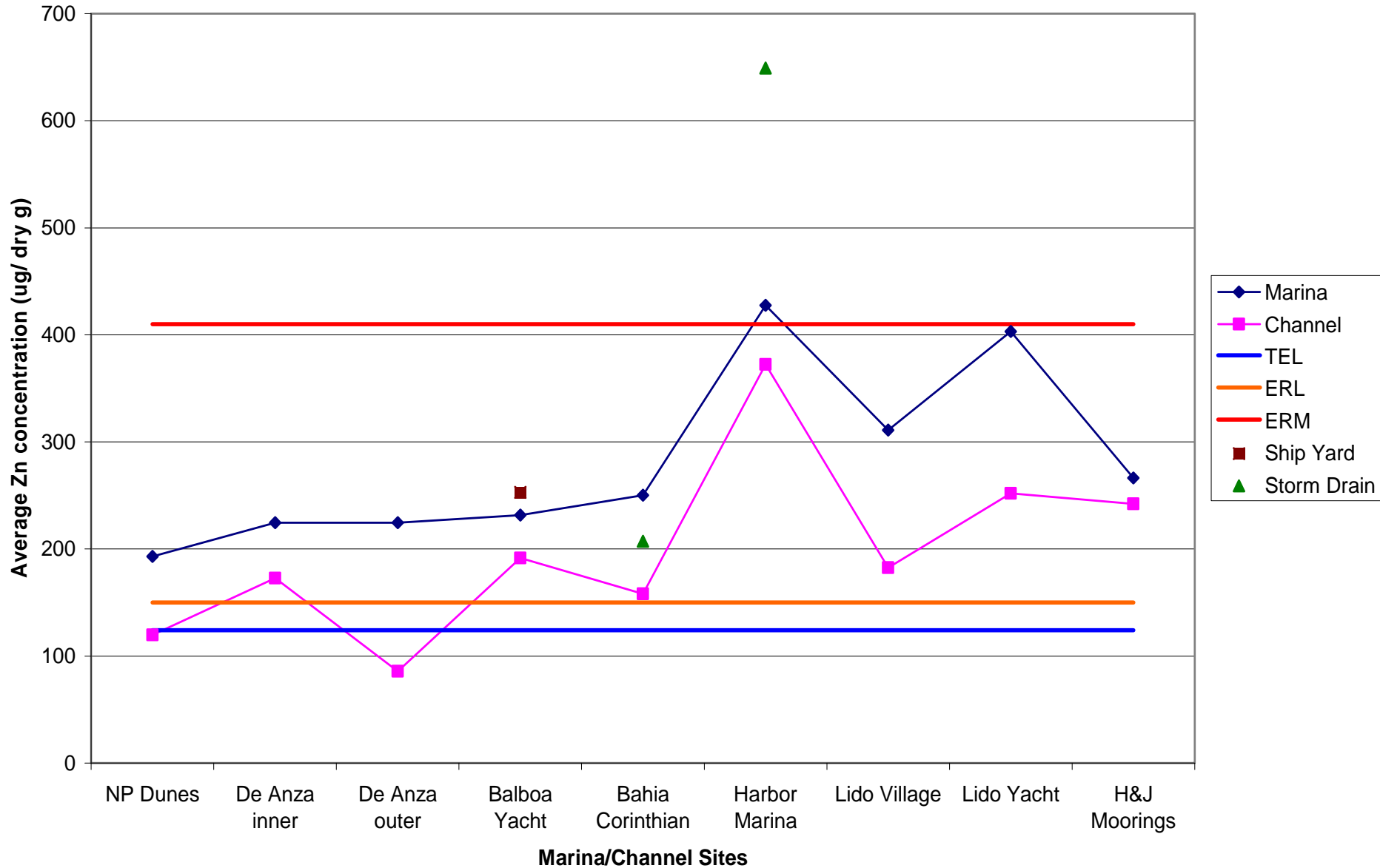
Comparison of average Dissolved Cu concentrations (ug/ dry g) at marina and channel sites



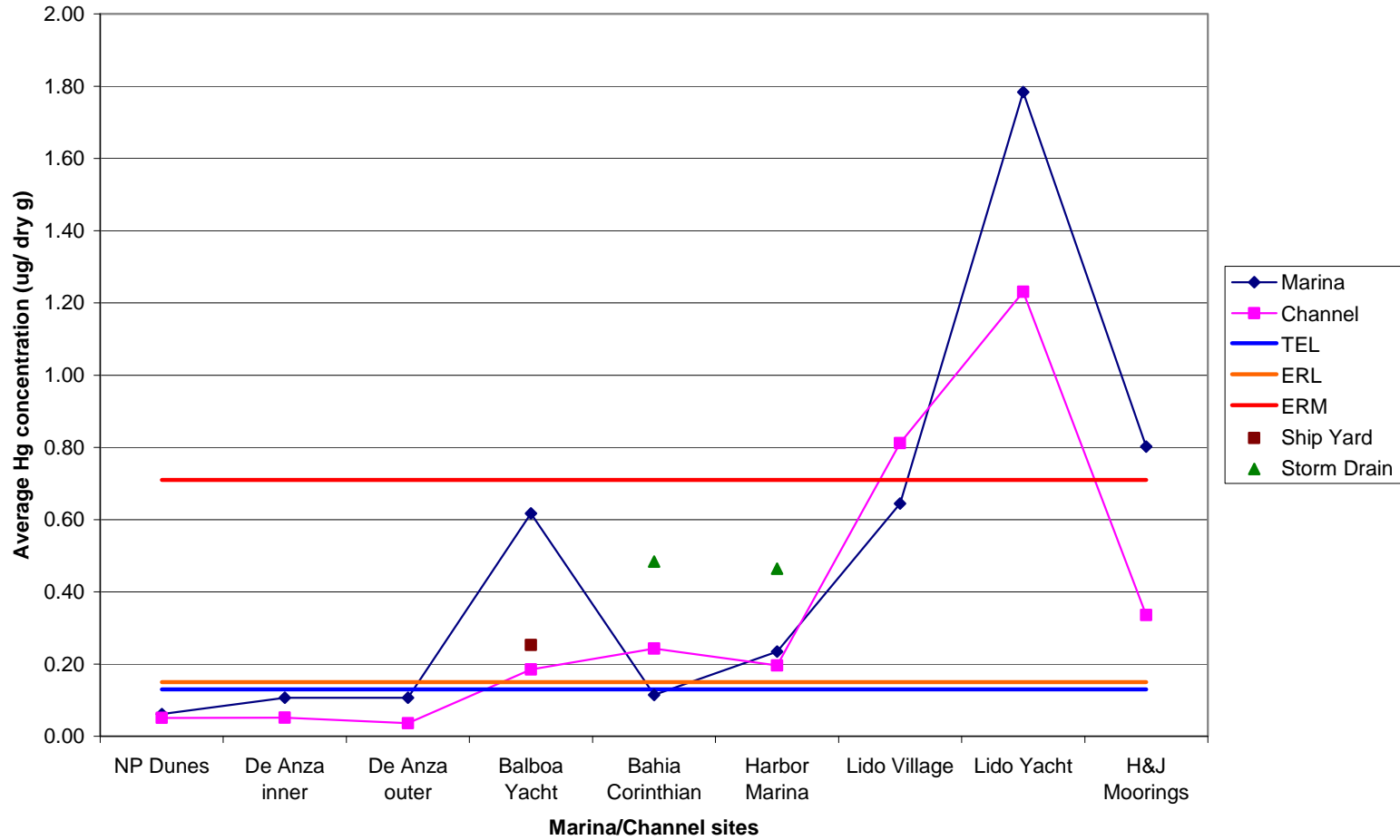
Comparison of average Cu concentrations (ug/ dry g) at marina and channel sites



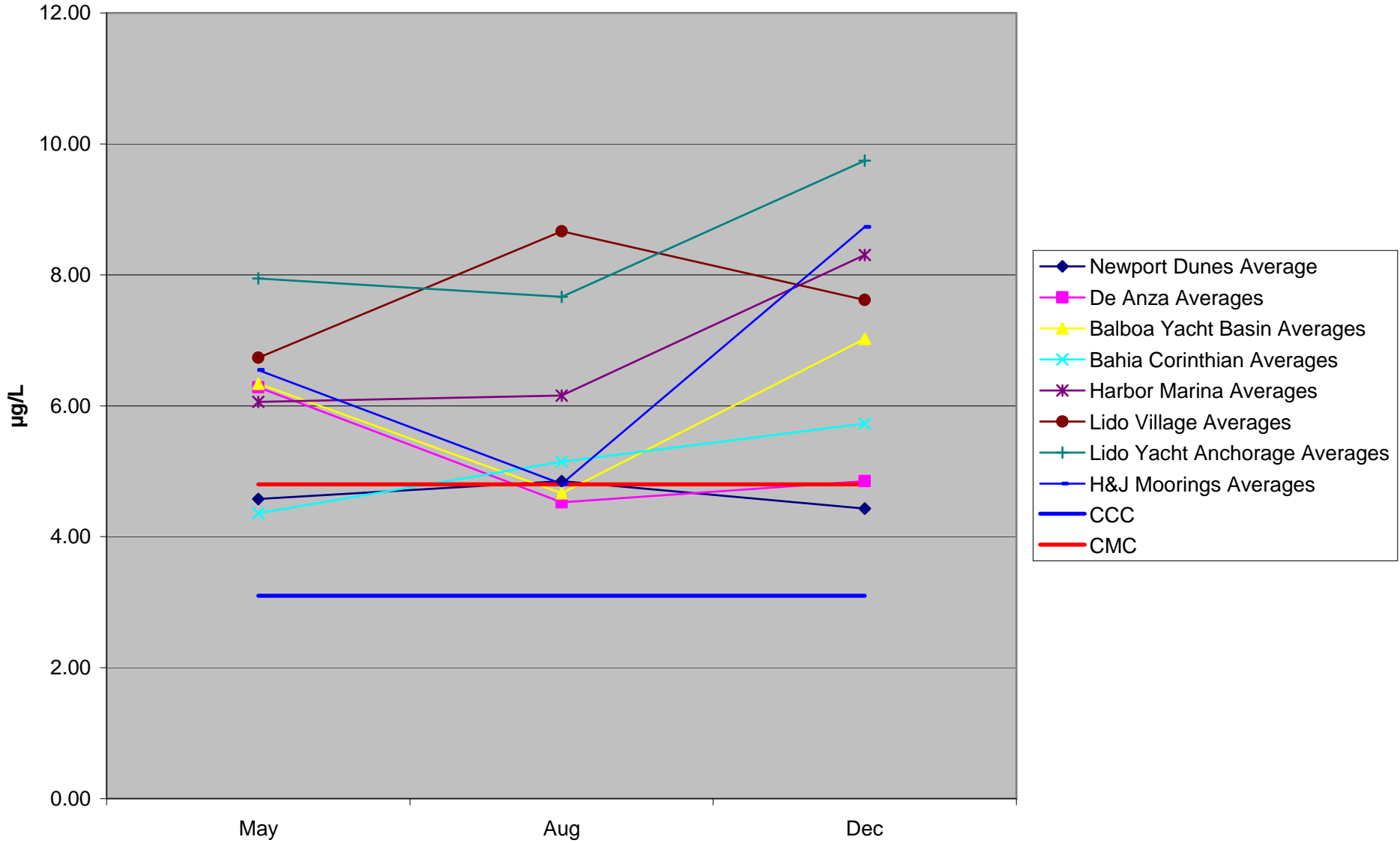
Comparison of average Zn concentrations (ug/ dry g) at marina and channel sites



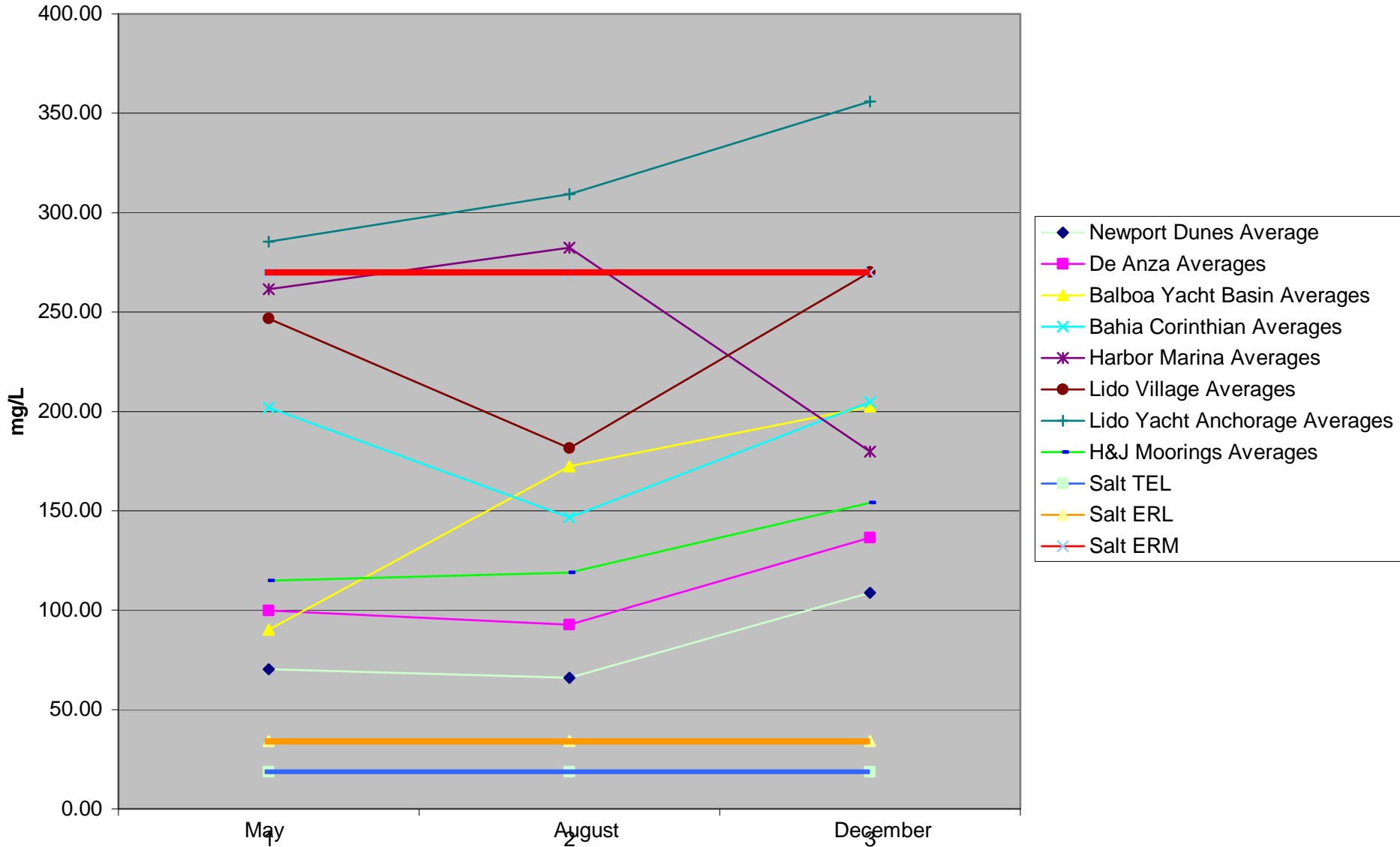
Comparison of average Hg concentrations (ug/ dry g) at marina and channel sites



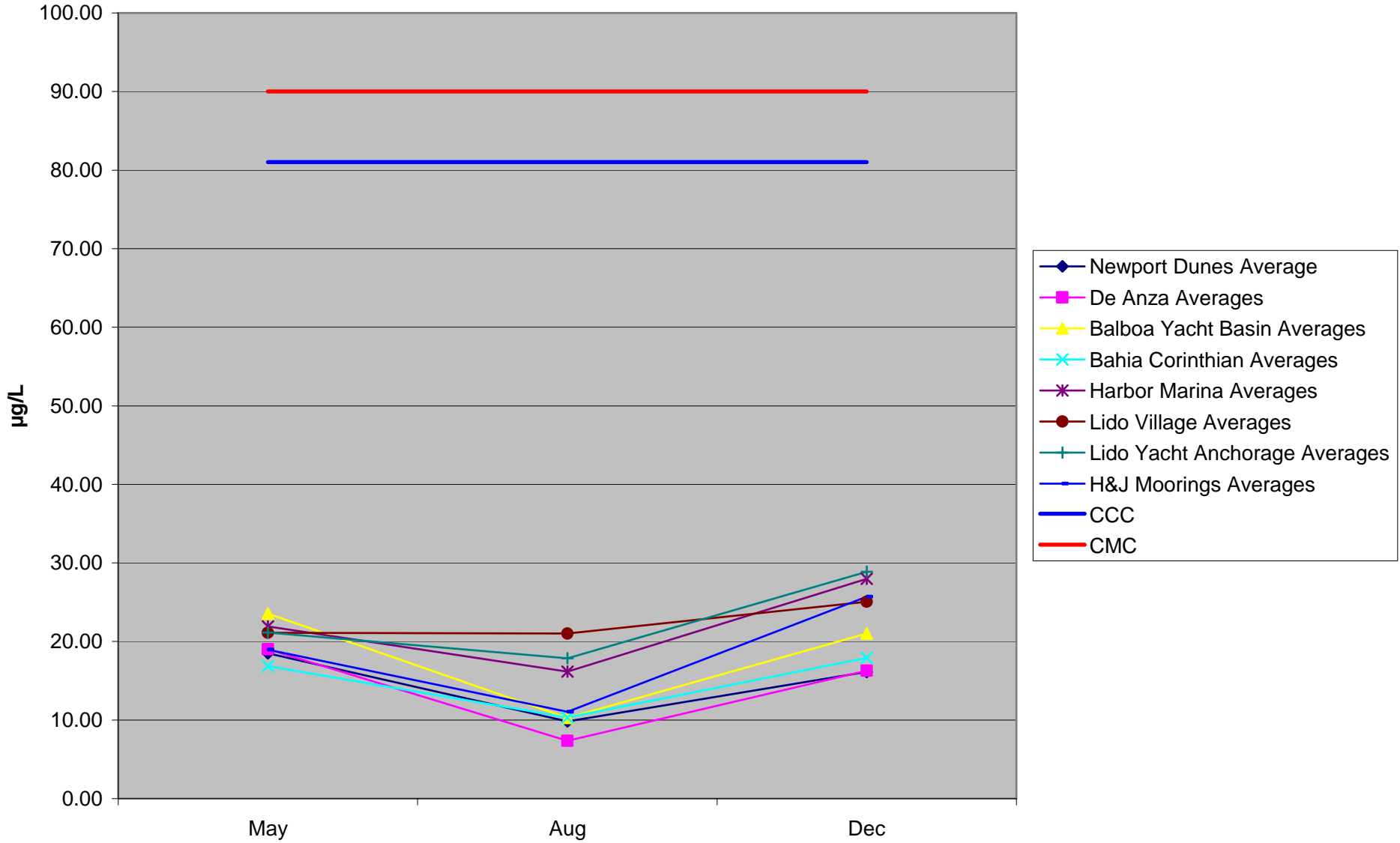
Marina Dissolved Copper (Cu) Averages Per Month



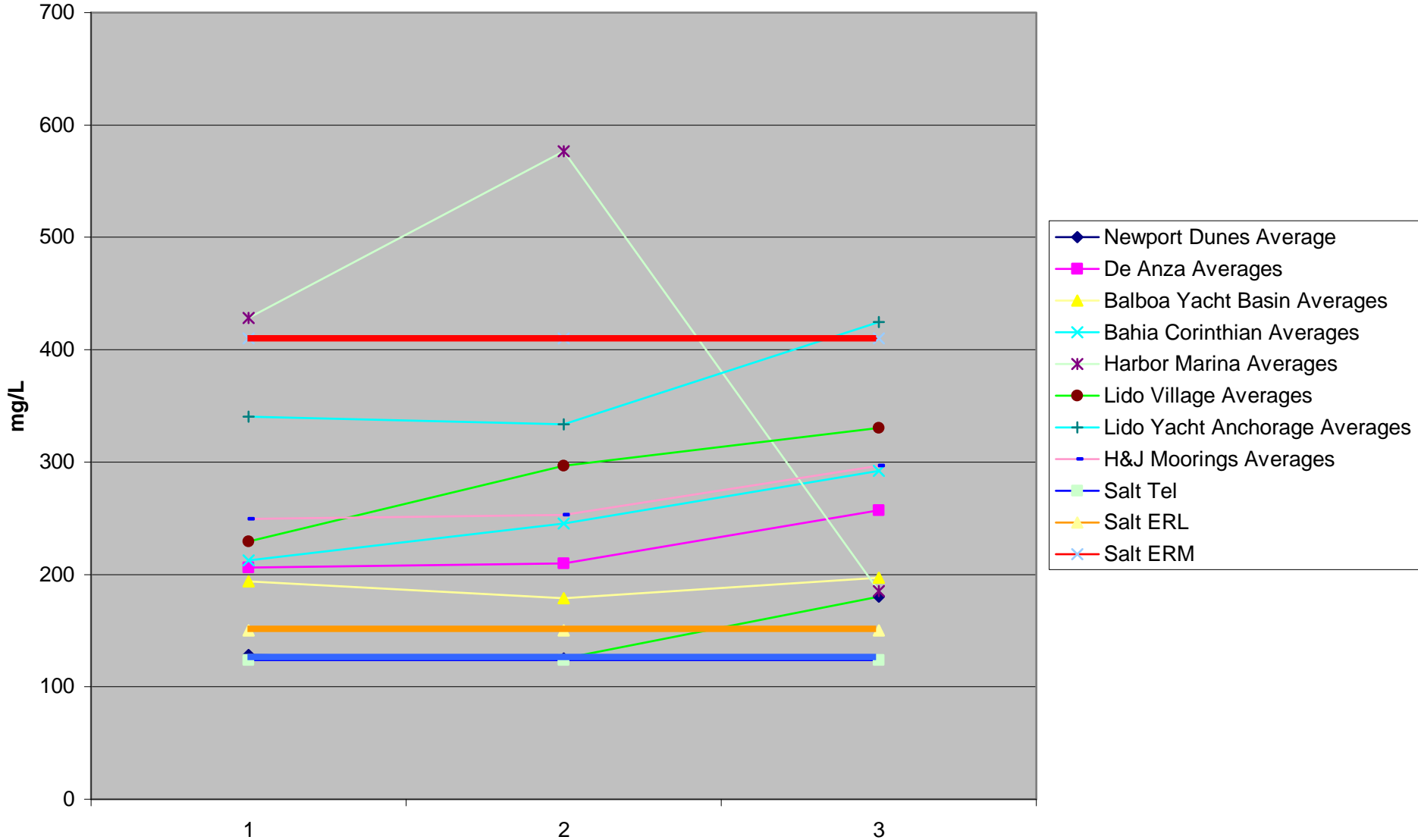
Marina Sediment Copper (Cu) Averages Per Month



Marina Dissolved Zinc (Zn) Averages Per Month



Marina Sediment Zinc (Zn) Averages Per Month



Dissolved Metals

	<i>Marina mean (ug/L)</i>	<i>Channel mean (ug/L)</i>
Cu	4.26* * >CTR chronic (3.1)	3.11* * >CTR chronic (3.1)
Zn	18.61	15.21
Cd	0.07	0.05
Pb	0.02	0.01
As	1.11	1.13
Hg	Nd	Nd

Conclusions

Water

- *Dissolved Copper only metal above CTR standards acute & chronic (4.8, 3.1 ug/L)
(biggest source of Cu is boat paints ~ 60,000 lbs/yr)*
- *Most dissolved Cu marina means & half channel means above CTR*
- *Mean dissolved Cu concentrations mostly above mean channel concentrations (not statistically significant)*
- *Highest dissolved Cu concentrations in W Newport (range 2-11 ug/L)*
- *No Water Toxicity Found*

Conclusions cont.

Sediment

- *Sediment Cu, Hg, Zn above ERM's - mostly in W Newport*
 - *Sediment Cu, As, Cd, Cr, Hg, Pb and Zn above ERLs*
 - *Marina means mostly higher than channel means (Sediment Cu, Zn -statistically significantly higher in 5/8marinas)*
- highest sediment concentrations in W Newport, lowest in Dunes, DeAnza*

Conclusions cont.

Sediment Toxicity

- *Sediment toxicity found at 8/10 stations tested (6/8 marinas) w/Eohaustorius*
- *Pore water tests showed reduced %alive altho results were inconclusive*

- *Data suggests that Cu boat paints are significant source of Cu to marina waters and sediments*

Contact info

Lcandelaria@waterboards.ca.gov

951-782-4991

Cu Marina report link -

*www/waterboards.ca.gov/santaana/html/
tmdl_toxics.html*